

# HAWAII PAPAYAS



National Agricultural Statistics Service

Hawaii Agricultural Statistics Service  
Hawaii Department of Agriculture  
Box 22159, Honolulu, HI 96823-2159  
(808) 973-9588  
FAX (808) 973-2909  
Internet Web Site <http://www.nass.usda.gov/hi>

Frequency: Monthly  
Release: April 15, 2002

## MARCH FRESH PRODUCTION UP 7 PERCENT

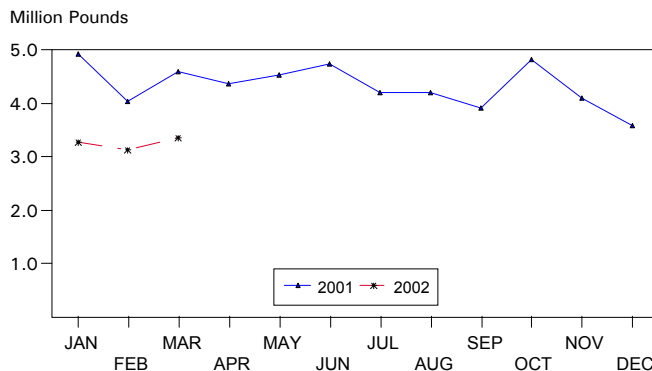
Hawaii fresh papaya utilization is estimated at 3.37 million pounds for March 2002, 7 percent higher than last month, but 27 percent lower than a year ago.

Area in crop totaled 2,485 acres, 4 percent lower than December 2001 and 13 percent less than a year ago. Harvested area totaled 1,935 acres, up 5 percent from December 2001, but 4 percent down from March 2001.

Weather conditions in March were variable. Most weeks were cloudy and rainfall was heavy at times. Wet conditions have increased the incidence of some diseases. Periods of sunshine allowed farmers to catch up on field activities such as spraying for disease control.

Papaya growers are expected to receive an estimated 34.0 cents per pound for fresh fruit in March, 3 percent (1.0 cent) lower than last month, and 6 percent (2.0 cents) higher than a year ago.

FRESH PAPAYA UTILIZATION  
STATE OF HAWAII, 2001-2002<sup>1</sup>



<sup>1</sup> 2001-2002 Preliminary.

HASS

## FRESH PAPAYA UTILIZATION, STATE OF HAWAII, MONTH OF: March 2002

| Island                               | Sales               |            |              |             | Year ago | Year-to-date |       |
|--------------------------------------|---------------------|------------|--------------|-------------|----------|--------------|-------|
|                                      | Local <sup>1</sup>  | Intrastate | Out-of-State | Total fresh |          | 2001         | 2002  |
|                                      | <i>1,000 pounds</i> |            |              |             |          |              |       |
| Hawaii.....                          | 174                 | 1,126      | 1,400        | 2,700       | 3,480    | 10,305       | 7,835 |
| Kauai.....                           | 37                  | 68         | 10           | 115         | 170      | 515          | 300   |
| Maui/Molokai/Oahu <sup>2</sup> ..... | 527                 | 3          | 20           | 550         | 950      | 2,750        | 1,650 |
| State.....                           | 738                 | 1,197      | 1,430        | 3,365       | 4,600    | 13,570       | 9,785 |

<sup>1</sup> On island of production.

<sup>2</sup> Combined to avoid disclosure of individual operations.

**PAPAYA ACREAGE, STATE OF HAWAII, 2002 WITH COMPARISONS**

| Island                 | Total acreage in crop |       |       |      |           |      |          |      |
|------------------------|-----------------------|-------|-------|------|-----------|------|----------|------|
|                        | March                 |       | June  |      | September |      | December |      |
|                        | 2001                  | 2002  | 2001  | 2002 | 2001      | 2002 | 2001     | 2002 |
| Hawaii.....            | 2,270                 | 2,200 | 3,000 |      | 2,360     |      | 2,275    |      |
| Kauai.....             | 120                   | 75    | 105   |      | 75        |      | 80       |      |
| Maui/Molokai/Oahu..... | 470                   | 210   | 430   |      | 255       |      | 220      |      |
| State.....             | 2,860                 | 2,485 | 3,535 |      | 2,690     |      | 2,575    |      |
|                        | Total bearing acres   |       |       |      |           |      |          |      |
| Hawaii.....            | 1,660                 | 1,700 | 1,670 |      | 1,675     |      | 1,625    |      |
| Kauai.....             | 85                    | 60    | 80    |      | 50        |      | 60       |      |
| Maui/Molokai/Oahu..... | 280                   | 175   | 285   |      | 200       |      | 150      |      |
| State.....             | 2,025                 | 1,935 | 2,035 |      | 1,925     |      | 1,835    |      |

**FRESH PAPAYA FARM PRICE, STATE OF HAWAII, 2001-2002**

| Year              | Jan.                   | Feb. | Mar. | Apr. | May  | June | July | Aug. | Sep. | Oct. | Nov. | Dec. | Average |
|-------------------|------------------------|------|------|------|------|------|------|------|------|------|------|------|---------|
|                   | <i>Cents per pound</i> |      |      |      |      |      |      |      |      |      |      |      |         |
| 2001 <sup>1</sup> | 21.0                   | 28.0 | 32.0 | 37.0 | 35.0 | 32.0 | 33.0 | 30.0 | 27.0 | 25.0 | 25.0 | 26.0 |         |
| 2002 <sup>1</sup> | 34.0                   | 35.0 | 34.0 |      |      |      |      |      |      |      |      |      |         |

<sup>1</sup>Preliminary.