

# HAWAII PAPAYAS



National Agricultural Statistics Service

Hawaii Agricultural Statistics Service  
Hawaii Department of Agriculture  
Box 22159, Honolulu, HI 96823-2159  
(808) 973-9588  
FAX (808) 973-2909  
Internet Web Site <http://www.nass.usda.gov/hi>

Frequency: Monthly  
Release: February 14, 2001

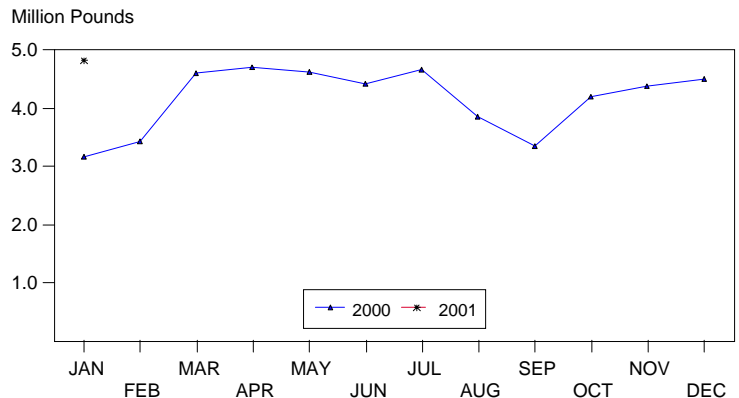
## JANUARY FRESH OUTPUT PEGGED AT 4.8 MILLION POUNDS

January's fresh papaya output is estimated at 4.8 million pounds, 7 percent more than December and 52 percent higher than December 2000.

January weather conditions were variable with a mix of light showers and sunshine over major papaya producing orchards.

Papaya growers are expected to receive an estimated 21.0 cents per pound for fresh fruit in January, 5 percent (1.0 cent) higher than December but 43 percent (16.0 cents) lower than a year ago.

## FRESH PAPAYA UTILIZATION STATE OF HAWAII, 2000-2001<sup>1</sup>



<sup>1</sup> 2000-2001 Preliminary.

HASS

## FRESH PAPAYA UTILIZATION, STATE OF HAWAII, MONTH OF: January 2001

Island	Sales				Year ago	Year-to-date	
	Local <sup>1</sup>	Intrastate	Out-of-State	Total fresh		2000	2001
	<i>1,000 pounds</i>						
Hawaii.....	164	1,716	1,900	3,780	1,710	1,710	3,780
Kauai.....	65	25	65	155	385	385	155
Maui/Molokai/Oahu <sup>2</sup> .....	600	5	295	900	1,080	1,080	900
State.....	829	1,746	2,260	4,835	3,175	3,175	4,835

<sup>1</sup> On island of production.

<sup>2</sup> Combined to avoid disclosure of individual operations.

DONALD A. MARTIN  
State Agricultural Statistician

ARTHUR Y. OSAKI  
Research Statistician

SANDY K. NAKASONE  
Statistical Assistant

**PAPAYA ACREAGE, STATE OF HAWAII, 2000 WITH COMPARISONS**

Island	Total acreage in crop							
	March		June		September		December	
	1999	2000	1999	2000	1999	2000	1999	2000
Hawaii.....	2,890	2,095	2,545	1,600	2,275	2,050	2,300	2,040
Kauai.....	250	330	270	340	300	235	330	185
Maui/Molokai/Oahu.....	595	615	595	635	670	470	600	470
State.....	3,735	3,040	3,410	2,575	3,245	2,755	3,230	2,695
<b>Total bearing acres</b>								
Hawaii.....	1,725	1,010	1,440	950	995	1,190	1,030	1,495
Kauai.....	110	185	150	200	160	160	155	125
Maui/Molokai/Oahu.....	265	385	435	435	460	260	450	255
State.....	2,100	1,580	2,025	1,585	1,615	1,610	1,635	1,875

**FRESH PAPAYA FARM PRICE, STATE OF HAWAII, 2000-2001**

Year	Jan.	Feb.	Mar.	Apr.	May	June	July	Aug.	Sep.	Oct.	Nov.	Dec.	Average
	<i>Cents per pound</i>												
2000 <sup>1</sup>	37.0	41.0	36.0	35.0	37.0	32.0	28.0	27.0	33.0	29.0	26.0	20.0	
2001 <sup>1</sup>	21.0												

<sup>1</sup> Preliminary.