



Hawaii Monthly Livestock Review

National
Agricultural
Statistics
Service

January 10, 2008

In Cooperation with the Hawaii Department of Agriculture

Hawaii Field Office · 1428 South King Street · Honolulu, HI 96814-2512 · 1-(800)-804-9514 · www.nass.usda.gov

CONTENTS

Poultry

Number of layers, rate of lay, and total eggs..... 1

Cattle

Total marketings and exports..... 2

Commercial slaughter..... 3

Hogs

Commercial slaughter..... 3

Pasture and livestock conditions

County summaries..... 4

Dairy

Number of milk cows, milk per cow, and total milk production.... 5

Farm prices

Farm prices for selected livestock commodities 6

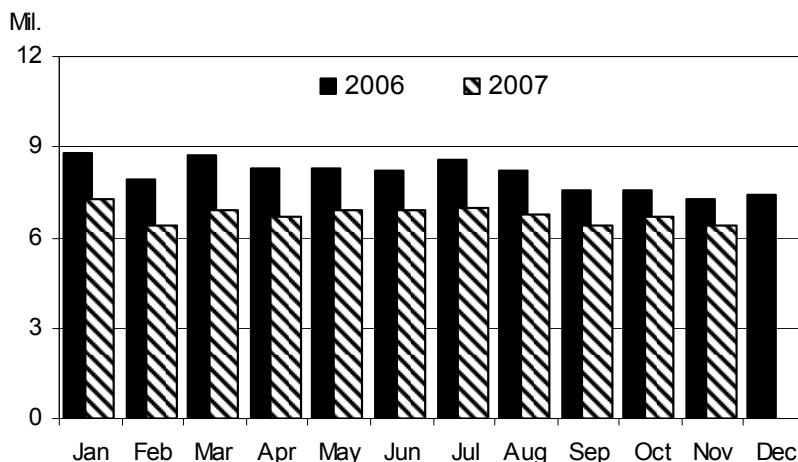
U.S. livestock roundup

Latest national estimates and outlook reports..... 7-8

November Egg Production Down 12 Percent From A Year Ago

Hawaii egg production totaled 6.40 million (17,778 cases) in November 2007, down 12 percent from November 2006. The average number of layers on hand during November 2007 was estimated at 362,000, down one percent from October 2007 and down 13 percent from November 2006. The average rate of lay during November 2007 was 1,768 per 100 layers (58.9 percent rate of lay), up 1 percent from November 2006.■

Monthly Eggs: Total eggs produced, State of Hawaii, 2006 and 2007



EGGS: Number of layers, rate of lay, and production, State of Hawaii, November 2007 and year-to-date totals with comparisons.

County	Number of layers on hand during month			Rate of lay per 100 layers		Total eggs produced			
	Nov. 2006	Oct. 2007	Nov. 2007	Nov. 2006	Nov. 2007	Nov. 2006	Nov. 2007	Year-to-date	
								2006	2007
State ^{1/}	417.0	365.0	362.0	1,751	1,768	7.30	6.40	89.50	74.40

^{1/} County data series discontinued.

Mark Hudson, Director

Ron Nakamura, Nils Morita, Research Statisticians
Karen Lee and Joyce Jay, Statistical Assistants

USDA is an equal opportunity provider and employer.

Total Cattle Marketings and Exports

November Cattle Marketings Up 69 Percent From 2006

Total cattle marketings for November 2007 is estimated at 7,600 head, up 69 percent from November 2006. With one month remaining, cumulative cattle marketings for 2007 totaled 53,900 head, up 12 percent from the same period a year ago. ■

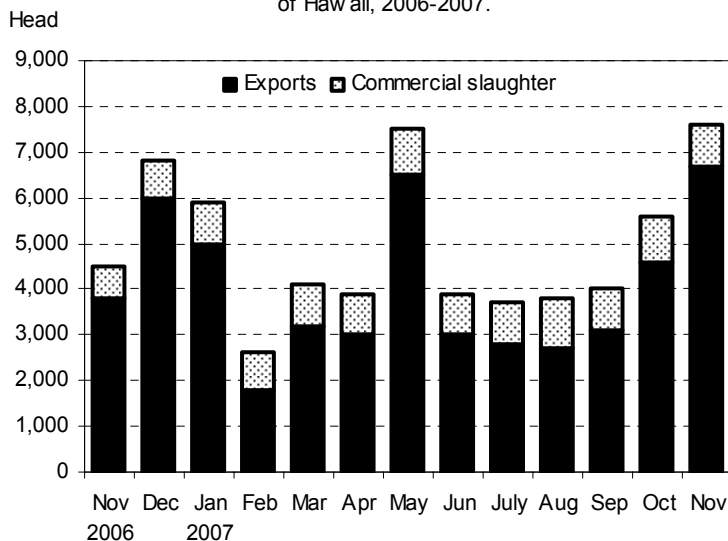
November exports up 76 percent from a year ago

Exports of steers and heifers totaled 6,700 head in November 2007, up 76 percent from a year ago. Out-shipments of steers totaled 3,400 head in November, a 48 percent increase compared to a year ago. Exports of heifers almost matched those of steers at 3,300 head in November 2007, up 120 percent from a year ago. Cumulative export of steers and heifers is estimated at 43,600 head, 14 percent more than the number exported during the same period a year ago. Exports of other classes of cattle were not included. ■

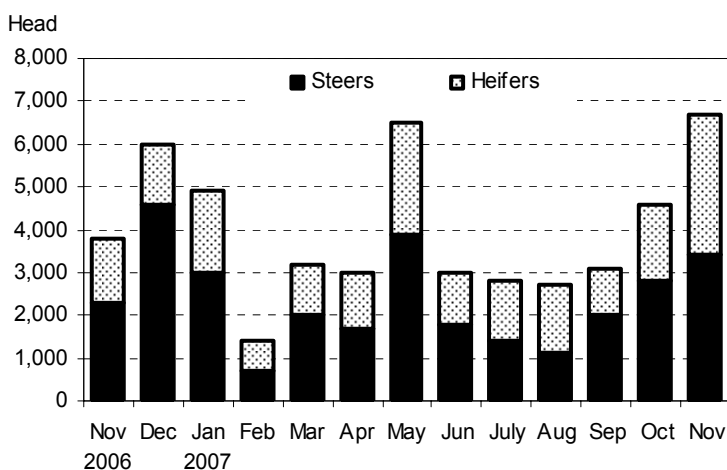
Average live weight tops 480 pounds

The average live weight of steers and heifers exported from Hawaii in November 2007 was 480 pounds, up 14 percent from November 2006's average live weight of 420 pounds. ■

Monthly Cattle Marketings: Number of head by type, State of Hawaii, 2006-2007.



Monthly Cattle Exports: Number of head by type, State of Hawaii, 2006-2007.



Cattle: Total marketings, exports by type, and average live weight of exports, State of Hawaii, November 2007 and year-to-date comparison.

Month	Total marketings ^{1/}		Exports by type ^{2/}							
			Steers		Heifers		Total ^{3/}		Average live weight	
	2006	2007	2006	2007	2006	2007	2006	2007	2006	2007
November	4,500	7,600	2,300	3,400	1,500	3,300	3,800	6,700	420	480
Year-to-date ^{4/}	48,000	53,900	22,300	24,600	16,000	19,000	38,300	43,600	416	432

^{1/} Sum of commercial slaughter and exports. Total may not add due to rounding.

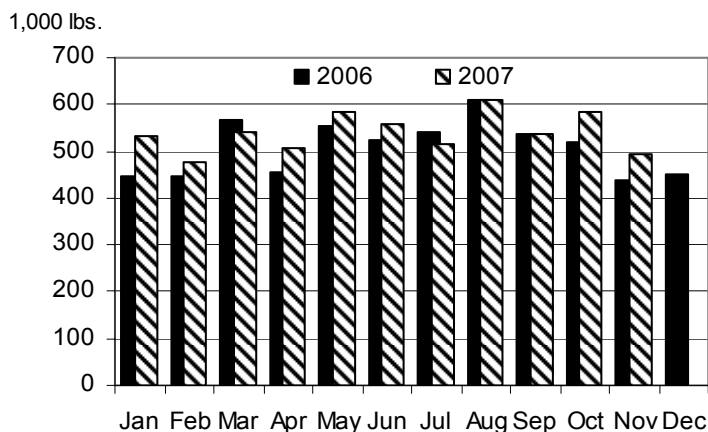
^{2/} Cattle and calves shipped out-of-State are classified as steers and heifers; all other classes of animals are not included. Annual totals for all classes of exports are available in the *Statistics of Hawaiian Agriculture* yearbook.

^{3/} Steers and heifers may not add to total due to rounding.

^{4/} Includes any revisions made to previous months.

Cattle and Hogs Commercial Slaughter

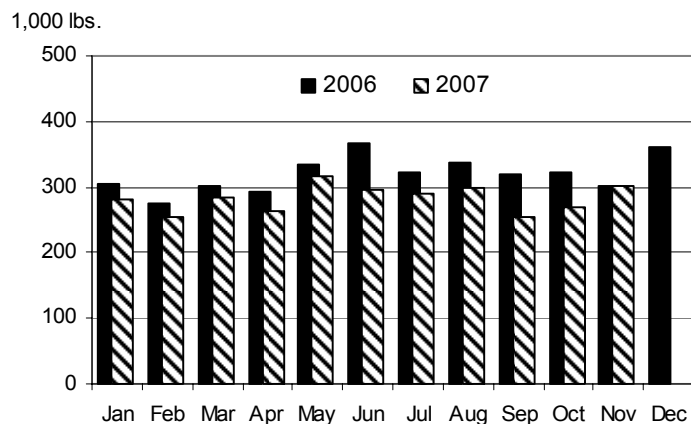
Monthly Commercial Beef Production:
Total Dress Weight, State of Hawaii, 2006 and 2007



Commercial Beef Production Up 13 Percent From Year Ago

Hawaii commercial beef production (local slaughter) during November 2007 totaled 495,000 pounds, up 13 percent from November 2006. Cumulative beef production (local slaughter) through November 2007 totaled 5.9 million pounds, up 5 percent from a year ago. Commercial kill totaled 900 head in November, up 29 percent from November 2006. Average live weight per head was 1,030 pounds in November 2007, down 4 percent from the average live weight per head in November 2006. ■

Monthly Commercial Pork Production:
Total Dress Weight, State of Hawaii, 2006 and 2007



Commercial Pork Production Unchanged From Year Ago

Hawaii commercial pork production during November 2007 totaled 301,000 pounds, unchanged from November 2006. Cumulative pork production for the first 11 months of 2007 totaled 3.1 million pounds, down 11 percent from a year ago. Total hog kill was 1,700 head in November 2007, down 6 percent from a year ago. Average live weight per head was 232 pounds in November 2007, up 2 percent from the 227-pound average a year ago. ■

Cattle and Hogs: Total commercial slaughter, average live weight, total live weight, And total dressed weight, State of Hawaii, November 2007 and year-to-date with comparison. ^{1/}

Month	Total commercial slaughter		Average live weight		Total live weight		Total dressed weight ^{2/}	
	2006	2007	2006	2007	2006	2007	2006	2007
----- number of head----- ----- Pounds ----- ----- 1,000 pounds -----								
Cattle								
November	700	900	1,067	1,030	798	902	438	495
Year-to-date	9,700	10,200	--	--	10,269	10,818	5,638	5,939
Hogs ^{3/}								
November	1,800	1,700	227	232	401	401	301	301
Year-to-date	20,300	19,100	--	--	4,634	4,139	3,476	3,104

-- Not estimated.

^{1/} Excludes non-inspected farm slaughter and live cattle and calves shipped out-of-State; includes custom slaughter.

^{2/} Estimates based on 54.9 dressing percentage for cattle and 75.0 dressing percentage for hogs.

^{3/} Excludes non-inspected farm slaughter; includes custom slaughter and live hog inshipments from the mainland for slaughter.



Pasture and Livestock Conditions, December 1, 2007

Hawaii County

November Rainfall ^{1/}

Station	2007	Normal
Honokaa	2.17"	7.90"
Kamuela upper	5.73"	5.30"
Kahuku Ranch	3.04"	3.90"
Puu Waawaa	1.69"	1.90"
Waikii	2.78"	1.70"

North Hilo, South Hilo, and Puna district pastures in the upper areas from Mt. View to Volcano benefited from showers. However, cloudy days and thick vog reduced the amount of sunlight needed for optimum grass growth. Feed supplies and new grass prospects remained good in most low and mid-elevation pastures. Pastures at the base of Mauna Kea remained in poor condition as showers were not able to extend to the upper elevations.

Ka'u district pastures in coastal and upper areas improved due to showers early in the month. Coastal pastures in the Pahala area had green growth. Weeds, however, were abundant. Coastal Naalehu's normally brown pastures were green with grass growth. Upper pastures from Kahuku to Pahala showed good new grass growth. Feed quality and prospects for new grass growth were generally good. After a dry mid-month, moderate showers restored soil moisture and boost new grass growth at the end of the month. Keauhou area pastures had new grass growth due to showers.

North and South Kohala district pastures had a flush of new grass growth. Shorter and slightly cooler days helped soils to hold moisture through the first half of the month. Substantial rain near the end of the month again spurred new growth. Prospects for new grass were good.

North and South Kona district pastures in southern areas were mostly in good condition. Grass

growth was steady due to improved rainfall. Upper elevation pastures were in better condition than those in coastal areas. Prospects for new grass were good. In North Kona, rain at the beginning and again at the end of the month provided needed relief for drought stricken areas. Drenching rain the last week of the month raised soil moisture and provided a flush of new growth particularly along the mountain slopes.

Hamakua district pastures at the low and mid-elevations could not sustain new grass growth from the previous month. Pasture conditions did improve as moderate showers returned. The increase in soil moisture at the lower elevation pastures helped to boost new grass growth. A lack of adequate showers and cool temperatures hampered pastures at the higher elevations.

Maui County

November Rainfall ^{1/}

Station	2007	Normal
Hana Airport	6.22"	8.00"
Pukalani	2.60"	2.50"
Ulupalakua Ranch	3.39"	2.80"
Molokai Airport	5.28"	2.80"

Pastures in the upper elevations had increased supplies of forage and supplemental feeding was reduced to only providing mineral supplements for most operations. Pastures benefited from frequent showers. Haiku pastures were in fair condition under light to moderate grazing pressure. Kula pastures were in fair condition, while Ulupalakua pastures increased their feed supply due to additional precipitation. However, there was also an increase of fireweed. Makawao pastures also benefitted from showers, although some of these pastures have been irrigated over the past couple of months. Fireweed was also noted in

Makawao. Central area pastures were able to provide increased feed supply. Kahakuloa received a good amount of rainfall and grass supply was steady, however, there has been less grazing in the area. Wild herds of goats continued to move throughout the area limiting the overall improvement of the forage. Moloka'i pastures on the east side continued to show re-growth of green forage. Kalae pastures were in good condition. Pastures on the west side of the island had some new growth and a good supply of dry forage.

Honolulu County

November Rainfall ^{1/}

Station	2007	Normal
Hakipuu Mauka	14.59"	8.30"
Lualualei	4.23"	2.50"
Waimanalo	13.68"	5.60"

Overall pastures were in good condition having benefited from higher than normal rainfall in most areas.

Kauai County

November Rainfall ^{1/}

Station	2007	Normal
Omao	8.03"	5.90"
Kapahi	11.03"	8.40"
Princeville Airport	5.60"	5.50"

Abundant showers mixed with occasional sunshine provided helped maintain pastures in fair to good condition. ■

^{1/} Rainfall stations were selected from the National Weather Service's Hydronet system of automated rain gauges. Featured stations may vary each month. All rainfall data has not been quality controlled, and therefore is not certified by the National Weather Service. A complete listing of Hydronet stations, rainfall gauge location maps, and other rainfall data may be found at the National Weather Service's hydrology homepage:

<http://www.prh.noaa.gov/hnl/pages/hydrology.php>

November Milk Production

Down 50 Percent From Year Ago

Hawaii's dairy cows produced 2.0 million pounds of milk in November 2007, down 50 percent from a year ago. Cumulative milk production for the first 11 months of 2007 totaled 33.2 million pounds, down 37 percent from the same period in 2006. ■

November's Cow Herd

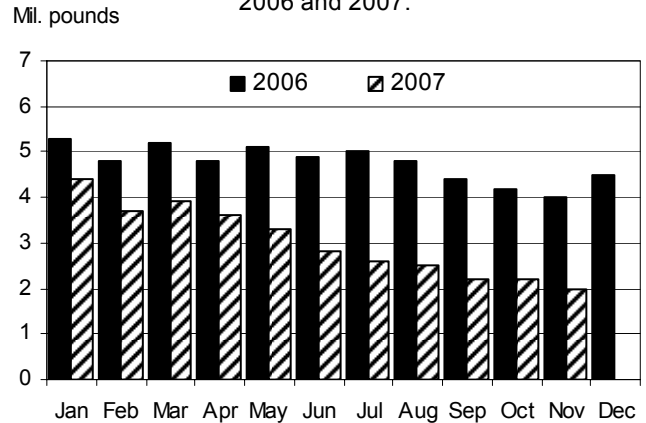
Down 41 Percent From Year Ago

Hawaii's cow herd, both dry and milking, numbered 2,300 head in November 2007, down 8 from October 2007 and down 41 percent from November 2006. ■

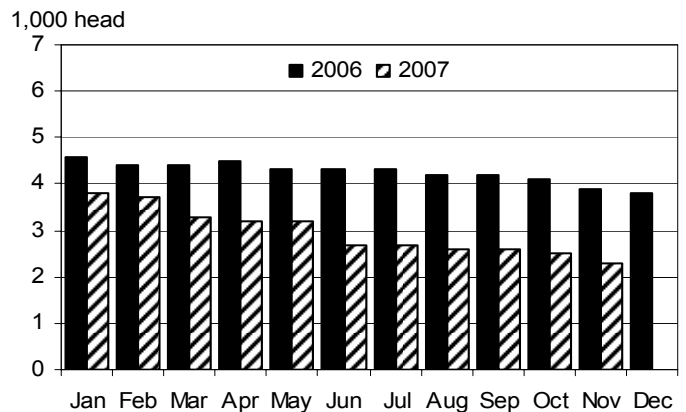
Milk Per Cow Decreases

Average milk per cow is estimated at 840 pounds for November 2007, down 18 percent from last November's average of 1,025 pounds per cow. ■

Milk: Monthly production, State of Hawaii, 2006 and 2007.



Milk: Average number of cows on hand during month, State of Hawaii, 2006 and 2007.



Milk: All milk cows, milk per cow, and total milk production, State of Hawaii, November 2007 and year-to-date with comparisons. ^{1/}

Area	All milk cows ^{2/}			Milk per cow		Milk production			
	Nov. 2006	Oct. 2007	Nov. 2007	Nov. 2006	Nov. 2007	Nov. 2006	Nov. 2007	Year-to-date	
								2006	2007
	----- number of head -----			----- pounds -----		----- 1,000 pounds -----			
State	3,900	2,500	2,300	1,025	840	4,000	2,000	52,500	33,200

^{1/} Figures for 2007 are preliminary.

^{2/} Includes dry cows and cows on non-commercial dairy farms.

Average Farm Prices

November Farm Prices Show Mixed Changes From A Year-ago Averages

Steers and heifers

The average dress weight farm price for steers and heifers is estimated at 98.0 cents per pound for November 2007, down a penny from October and a year ago.

Cows

The average dress weight farm price for cows is estimated at 54.0 cents per pound in November 2007, up a penny from October and unchanged from a year ago.

Market hogs

The average dress weight farm price for market hogs is estimated at \$1.18 per pound for November 2007, down 4 cents from October 2007. Compared to a year ago, the dressed weight for market hogs was down 13.5 cents per pound this November.

Milk

The average farm price for milk was \$30.00 per hundredweight during November 2007, up 20 cents per hundredweight from October 2007. Compared to a year ago, the November 2007 average farm price for milk was \$3.00 per hundredweight higher.

Eggs

The average farm price for a dozen eggs was \$1.25 in November 2007, up 5 cents per dozen from October 2007. Compared to a year ago, the average farm price for a dozen eggs was up 24.0 cents in November 2007. ■

Livestock Commodity Farm Prices: Average farm prices for steers and heifers, cows, market hogs, milk, and eggs, State of Hawaii, November 2007 with comparisons.

Commodity	November 2006	October 2007	November 2007
<i>----- cents per pound -----</i>			
Steers and heifers ^{1/}			
Dressed weight	99.0	99.0	98.0
Live weight ^{2/}	54.4	54.4	53.8
Cows ^{1/}			
Dressed weight	54.0	53.0	54.0
Live weight ^{2/}	29.6	29.1	29.6
Market hogs ^{1/}			
Dressed weight	131.5	122.0	118.0
Live weight ^{3/}	98.6	91.5	88.5
<i>----- dollars per 100 pounds -----</i>			
Milk.....	27.00	29.80	30.00
<i>----- cents per dozen -----</i>			
Eggs ^{4/}	101.00	120.0	125.0

^{1/} Equivalent delivered slaughterhouse for sales in county of production and delivered shipper's dock for off-island sales.

^{2/} The average live weight price for range steers, heifers, and cows is equal to the dressed weight price multiplied by a factor of 0.549.

^{3/} The average live weight price for market hogs (includes roasters) is equal to the dressed weight price multiplied by a factor of 0.75.

^{4/} Prices are for all eggs, equivalent delivered processing plant. Preliminary prices are based on processor reports from the counties of Hawaii, Kauai, and Maui. Final prices are based on processor reports from all counties.



Commercial red meat production for the United States totaled 4.30 billion pounds in November, up 4 percent from the 4.15 billion pounds produced in November 2006.

Beef production, at 2.23 billion pounds, was slightly above the previous year. Cattle slaughter totaled 2.83 million head, down slightly from November 2006. The average live weight was up 9 pounds from the previous year, at 1,304 pounds.

Veal production totaled 10.1 million pounds, 22 percent below November a year ago. Calf slaughter totaled 58,900 head, down 12 percent from November 2006. The average live weight was down 36 pounds from last year, at 291 pounds.

Pork production totaled 2.05 billion pounds, up 8 percent from the previous year. Hog kill totaled 10.1 million head, up 7 percent from November 2006. The average live weight was unchanged from the previous year, at 272 pounds.

Lamb and mutton production, at 16.1 million pounds, was up 5 percent from November 2006. Sheep slaughter

totalled 236,700 head, 6 percent above last year. The average live weight was 136 pounds, down 1 pound from November a year ago.

U.S. egg production totaled 7.51 billion during November 2007, down 1 percent from last year. Production included 6.42 billion table eggs, and 1.09 billion hatching eggs, of which 1.02 billion were broiler-type and 66 million were egg-type. The total number of layers during November 2007 averaged 343 million, down 1 percent from last year. November egg production per 100 layers was 2,190 eggs, up 1 percent from November 2006.

All layers in the U.S. on December 1, 2007 totaled 343 million, down 2 percent from last year. The 343 million layers consisted of 284 million layers producing table or market type eggs, 56.0 million layers producing broiler-type hatching eggs, and 2.83 million layers producing egg-type hatching eggs. Rate of lay per day on December 1, 2007, averaged 73.1 eggs per 100 layers, up slightly from December 1, 2006. ■

Excerpts from *Livestock Slaughter* (December 21, 2007) and *Chickens and Eggs* (December 21, 2007) releases.



The Economics of Food, Farming, Natural Resources, and Rural America

Beef/cattle: Total commercial cow slaughter continues heavy and, along with heavy calf slaughter, could lead to reduced supplies of feeder cattle and the potential for reduced beef supplies in 2008 and 2009. Feeder cattle prices are declining because of a lack of wheat pasture this winter and the negative profit picture for cattle feeding. Retail beef prices are above last year's because total net supplies are below 2006 levels.

Pork/hogs: The USDA forecast for fourth-quarter pork production was revised to reflect larger-than-expected slaughter in November and December. Fourth-quarter commercial pork production is expected to be 6.1 billion pounds, almost 8 percent higher than a year ago. USDA releases the Quarterly Hogs and Pigs report on December 27, 2007.

Dairy: Expected higher feed prices in 2008 could dampen milk production expansion. Meanwhile, firm domestic and export demand for all major products

except whey should keep prices from falling precipitously.

Poultry/eggs: Broilers - strong exports have partially countered increasing production, and stocks have remained below year-earlier levels. Continued large gains in chick placements are expected to translate to higher broiler meat production, especially compared with last year's declines. This will eventually begin to place downward pressure on most broiler prices. Turkey - higher production through October held whole turkey prices to somewhat lower levels than the previous year and has boosted cold storage holdings above those for the same period in 2006. Prices for whole birds are expected to decline seasonally in December and into the first half of January 2008, but not as much as in 2006. Eggs - wholesale prices at the beginning of December were at record levels, on a nominal basis. With a smaller number of hens in the table egg flock



U.S. Livestock Roundup (continued)

and lower production expected in the fourth quarter, prices are expected to remain strong through the end of 2007 and into 2008. October broiler exports increased above a year ago, while turkey exports were year-over-year lower. Broiler exports totaled 589 million pounds, an increase of 35 percent. Turkey exports totaled 53.5 million pounds, a decline of 1 percent from a year ago.

Aquaculture: Grower sales of catfish are expected to decline in 2007 for the third consecutive year. In past years the lower sales have been offset by higher prices, but after being strong through the first half of 2007, farm

prices have fallen markedly. Grower estimates of inventories in ponds in mid-2007 showed declines in almost all categories, despite relatively strong farm prices in 2006 and the first half of 2007. The lower inventories point strongly towards continued lower sales in the remainder of 2007 and into 2008. Over the first 10 months of 2007, the amount of processed catfish sold was down 12 percent and the average price was basically unchanged.■

Excerpt from *Livestock, Dairy, & Poultry Outlook*/LDP-M-162/December 19, 2007 Economic Research Service, USDA.