



In cooperation with



Inside this issue:

Labor	1-2
Farm Financial Indicators	3
Sugar	4
U.S. Sugarbeets.....	5

All-Farm and Small Farm Wages Increase

Hawaii's hired agricultural workforce totaled 7,000 workers during the July 10-16, 2011 survey week, up 1 percent from January 2011, and up 13 percent from July of last year. Due to budgetary constraints, the April 2011 Agricultural Labor Survey was cancelled. Number of hired sugarcane and pineapple workers was the same for July 2011 compared to January 2011 and was up 50 workers from July 2010. All other (diversified agriculture) hired workers increased by 100 compared to the January 2011 estimate and increased by 750 from the July 2010 level.

Weather conditions were ideal for agricultural activities as scattered showers did not disrupt planting, cultivating, spraying, and harvesting activities. The National Drought Monitor rated 40 percent of the state not being in some form of drought condition. The bulk of the drought was rated for Maui and Hawaii Counties.

Hawaii's total farm workforce was estimated at 12,200 during the survey week of July 10-16, 2011. This was an increase of 10 percent from July 2010. The number of self-employed operators totaled 4,100 during July 2011's survey reference week, up 3 percent from the previous year's survey. Unpaid labor workers were estimated at 1,100, up 22 percent or 200 more workers from July 2010. ■

FARM LABOR: Number of Workers on Farms, Quarterly and Annual Averages, State of Hawaii, 2010 and 2011¹

Quarter	Total Farm Workforce	Number of Farm Workers by Type				
		Self-employed Farm Operators	Unpaid Workers ²	Hired Workers		
				Total	Sugarcane and Pineapple ³	Other
2010						
January	11,200	3,800	1,000	6,300	750	5,550
April	10,800	3,600	900	6,300	750	5,550
July	11,100	4,000	900	6,200	800	5,400
October	11,150	3,700	1,200	6,600	800	5,800
Annual average	11,200	3,800	1,000	6,400	800	5,600
2011						
January	12,300	4,500	900	6,900	850	6,050
April ⁴						
July	12,200	4,100	1,100	7,000	850	6,150
October						
Annual average						

¹ Estimates for each quarter are based on a survey week that includes the 12th day of the month. Annual averages are based on quarterly estimates.

² Unpaid workers include family members and others working 15 or more hours per week. ³ Data combined to avoid disclosure of individual operations.

⁴ The April 2011 Farm Labor Survey was not conducted.

Labor: U.S. Hired Workers Down 5 Percent from a Year Ago

There were 1,186,000 hired workers on the Nation's farms and ranches during the week of July 10-16, 2011, down 5 percent from a year ago. Of these hired workers, 835,000 were hired directly by farm operators. Agricultural service employees on farms and ranches made up the remaining 350,000 workers.

Farm operators paid their hired workers an average of \$10.90 per hour during the July 2011 reference week, up 11 cents from a year earlier. Field workers received an average of \$10.24 per hour, up 15 cents from last July, while livestock workers earned \$10.28 per hour compared with \$10.15 a year earlier. The field and livestock worker combined wage rate, at \$10.25 per hour, was up 14 cents from last year.

The number of hours worked averaged 41.3 for hired worker during the survey week, up 1 percent from a year ago. ■

Source: Farm Labor, August 18, 2011, National Agricultural Statistics Service (NASS), Agricultural Statistics Board, U.S. Department of Agriculture.

FARM LABOR: Wage Rates for Type of Workers and All Hired Workers for Hawaii, California, and United States, July 10-16, 2011 with Comparison. ¹

Quarter	All Hired Farm Workers				Field and Livestock Workers			
	Hawaii		California	United States ²	Hawaii		California	United States ²
	Farms With 1-9 Workers	All Farms			Farms With 1-9 Workers	All Farms		
Dollars per Hour								
July 11-17, 2010	12.24	14.41	11.12	10.79	11.27	12.19	10.23	10.11
July 10-16, 2011	14.42	14.91	10.80	10.90	12.14	12.76	10.10	10.25

¹ Excludes agricultural service workers. ² Excludes Alaska.



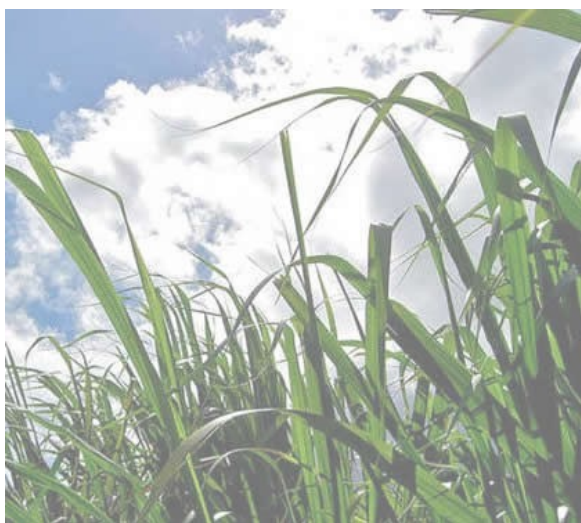
Farm Financial Indicators:

FARM FINANCIAL INDICATORS: Value Added to the Hawaii Economy by the Agricultural Sector Via the Production of Goods and Services, 2006-2010¹

Item ²	2006	2007	2008	2009	2010
1,000 Dollars					
Value of crop production	513,670	514,224	542,719	561,316	558,514
Fruits and tree nuts	97,894	87,069	91,850	91,183	83,296
Vegetables	147,212	113,797	113,990	102,555	101,926
All other crops	267,340	312,019	335,276	366,003	371,521
Home consumption	1,224	1,339	1,603	1,575	1,771
Value of inventory adjustment ³	0	0	0	0	0
Value of livestock production	65,721	64,849	66,312	71,936	71,898
Meat animals	30,610	29,878	27,664	31,941	36,647
Dairy products	14,508	9,673	5,460	7,491	8,750
Poultry and eggs	8,681	7,902	8,797	8,854	8,855
Miscellaneous livestock	14,253	21,339	25,817	22,770	23,756
Home consumption	167	183	186	229	219
Value of inventory adjustment ³	-2,498	-4,126	-1,612	651	-6,329
Revenues from services and forestry	71,777	72,405	91,358	77,836	84,354
Machine hire and customwork	9,878	8,900	10,041	13,374	12,686
Forest products sold	400	400	400	400	400
Other farm income	25,077	30,050	43,011	24,327	30,425
Gross imputed rental value of farm dwellings	36,422	33,055	37,906	39,735	40,843
Value of agricultural sector production	651,168	651,478	700,389	711,088	714,766
less: Purchased inputs	231,775	241,180	249,969	248,506	237,610
Farm origin	37,544	37,625	42,355	38,607	37,658
Feed purchased	19,524	19,610	25,542	23,145	22,339
Livestock and poultry purchased	65	65	45	59	72
Seed purchased	17,955	17,950	16,768	15,403	15,247
Manufactured inputs	85,550	87,659	90,455	89,218	86,663
Fertilizers and lime	28,744	29,807	31,688	30,845	29,659
Pesticides	18,071	17,238	17,864	18,241	18,302
Petroleum fuel and oils	23,204	23,619	23,156	22,894	21,804
Electricity	15,531	16,995	17,747	17,238	16,898
Other purchased inputs ⁴	108,681	115,896	117,159	120,681	113,289
plus: Net government transactions ⁵	-7,274	-7,628	-5,678	-460	1,835
Gross value added	412,119	402,670	444,742	462,122	478,991
less: Capital consumption	43,752	48,436	51,677	54,158	55,155
Net value added	368,367	354,234	393,065	407,964	423,836
less: Payments to stakeholders	208,302	210,245	205,687	201,318	213,097
Employee compensation (total hired labor)	181,154	183,797	178,604	174,192	187,020
Net rent received by nonoperator landlords	6,730	5,101	5,157	5,531	5,460
Real estate and nonreal estate interest	20,418	21,347	21,926	21,595	20,617
Net farm income	160,065	143,989	187,378	206,646	210,739

¹ Revised. ² Value of agricultural sector production is the gross value of the commodities and services produced within a year. Net value-added is the sector's contribution to the National economy and is the sum of the income from production earned by all factors-of-production, regardless of ownership. Net farm income is the farm operators' share of income from the sector's production activities. The concept presented is consistent with that employed by the Organization for Economic Cooperation and Development. ³ A positive value of inventory change represents current-year production not sold by December 31. A negative value is an offset to production from prior years included in current-year sales. ⁴ Includes repair and maintenance of capital items, machine hire and customwork, marketing, storage, and transportation expense, contract labor, and miscellaneous expenses. ⁵ Net government transactions is derived by subtracting motor vehicle registration, licensing fees, and property taxes from direct government payments. Source: Economic Research Service, USDA.

U.S. Sugarcane:



Production of sugarcane for sugar and seed is forecast at 28.6 million tons, down fractionally from the August 1 forecast but up 5 percent from 2010. Production increases from last year are expected in all estimating States. Producers intend to harvest 883,000 acres for sugar and seed in 2011, down 6,000 acres from the previous forecast. Producers in Hawaii are expected to harvest 17,000 acres for sugar and seed. If realized, this will be a record low for the State. Expected yield for the United States is forecast at 32.4 tons per acre, up 0.1 ton from the August 1 forecast.

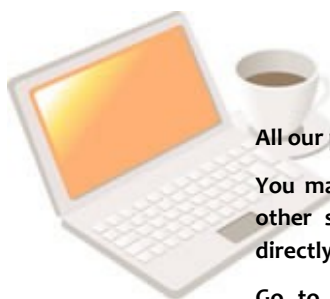
Recent rains in Louisiana and Florida have improved crop conditions. Hawaii and Texas continue to experience drought conditions. ■

SUGARCANE FOR SUGAR AND SEED: Area Harvested, Yield, and Production, by State and United States, 2010 and Forecasted September 1, 2011

State	Area Harvested		Yield ¹			Production ¹	
	2010	2011	2010	2011		2010	2011
				Aug 1	Sep 1		
	----- 1,000 Acres -----		----- Tons -----			----- 1,000 Tons -----	
Florida	392.0	397.0	33.1	34.5	35.0	12,972	13,895
Hawaii	17.4	17.0	71.6	77.4	77.4	1,245	1,316
Louisiana	420.0	420.0	27.8	28.0	28.0	11,676	11,760
Texas	48.1	49.0	30.5	34.9	33.7	1,467	1,651
U.S.	877.5	883.0	31.2	32.3	32.4	27,360	28,622

¹ Net tons.

Visit us online!



All our publications are available online at www.nass.usda.gov/hi.

You may also receive our publications, as well as national-level and other state agricultural publications, free of charge and delivered directly to your email.

Go to www.nass.usda.gov. Under the words "Receive reports by Email" located toward the right bottom of the page, click on either the "National" or "State" link and follow the instructions on the screen.



U.S. Sugarbeets:



Production of sugarbeets for the 2011 crop year is forecast at 29.2 million tons, down 9 percent from last year. Producers expect to harvest 1.21 million acres, down 1 percent from the previous forecast. Expected yield is forecast at 24.2 tons per acre, a decrease of 3.4 tons from last year.

Much of the growing region has experienced less than ideal growing conditions. Wet weather coupled with reports of disease and hail damage resulted in reduced yields from the previous forecast in half of the reporting States. Minnesota, which accounts for 32 percent of the total United States production, is forecasting 891 thousand tons less than the previous forecast, which if realized will be a 19 percent drop from last year's final production. ■

SUGARBEETS: Area Harvested, Yield, and Production, by State and United States, 2010 and Forecasted September 1, 2011¹

State	Area Harvested		Yield			Production	
	2010	2011	2010	2011		2010	2011
				Aug 1	Sep 1		
	----- 1,000 Acres -----		----- Tons -----			----- 1,000 Tons -----	
California	25.1	25.0	40.0	43.0	43.0	1,004	1,075
Colorado	27.9	28.7	29.5	29.0	26.0	823	746
Idaho	170.0	178.0	31.0	32.0	32.2	5,270	5,732
Michigan	147.0	149.0	26.0	24.6	24.6	3,822	3,665
Minnesota	441.0	462.0	26.6	22.0	20.5	11,731	9,471
Montana	42.5	43.1	29.5	25.2	25.1	1,254	1,082
Nebraska	47.5	51.0	23.8	24.5	24.5	1,131	1,250
North Dakota	214.0	231.0	26.5	23.0	22.0	5,671	5,082
Oregon	10.3	8.8	36.3	35.0	34.3	374	302
Wyoming	30.4	31.0	27.0	26.0	25.0	821	775
U.S.	1,155.7	1,207.6	27.6	25.0	24.2	31,901	29,180

¹ Relates to year of intended harvest in all States except California. In California, relates to year of intended harvest for fall planted beets in central California and to year of planting for overwintered beets in central and southern California.