

# HAWAII AGRICULTURAL LABOR



Fact Finders for Agriculture



# NASS

FACT FINDERS FOR AGRICULTURE  
UNITED STATES DEPARTMENT OF AGRICULTURE

National Agricultural Statistics Service

Hawaii Department of Agriculture  
Hawaii Agricultural Statistics Service

1428 South King Street  
Honolulu, HI 96814-2512  
☎ Oahu 1 - (808) 973-9588  
☎ Toll free PH: 1 - (800) 804-9514  
FAX: 1 - (808) 973-2909

Internet: <http://www.nass.usda.gov/hi/speccrop/aglabor.htm>

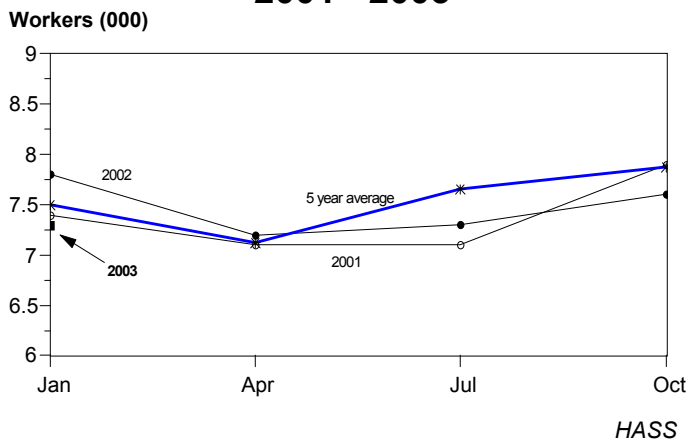
FREQUENCY: Quarterly

RELEASE: March 17, 2003

## AGRICULTURAL HIRED WORK FORCE 6 PERCENT BELOW YEAR AGO

Hawaii's agricultural hired work force totaled **7,300** during the January 12-18, 2003, survey week. According to the *Hawaii Agricultural Statistics Service*, this was 6 percent and 4 percent below January 2002 and October 2002, respectively. The diversified agricultural sector, with 5,400 workers, accounted for about 70 percent of the total hired work force. The sugar industry employed 700 farm workers during the survey week, while the pineapple industry employed 1,200 farm workers. Sugar and pineapple figures do not include mill and cannery workers.

### AGRICULTURAL HIRED WORKERS STATE OF HAWAII 2001 - 2003



The average wage paid to all hired workers during the January survey period was \$11.04 an hour, 14 cents more than January 2002. The combined average wage for field and livestock workers was \$9.36 an hour, 3 cents more than a year ago.

Farms employing from 1 to 9 workers paid an average of \$9.04 per hour for all hired workers, while the combined average wage for field and livestock workers was \$7.89 an hour.

The annual average island breakdown of worker numbers will be published in the November report.

**NOTE: Due to a change in the national labor statistics program, estimates for self-employed and unpaid workers have been discontinued beginning with the July 2002 report. Only estimates for hired workers will be made.**

### WORKERS ON FARMS, STATE OF HAWAII, January 2003<sup>1</sup>

Quarter	Total farm workers	Self-employed farm operators	Unpaid workers <sup>2</sup>	Hired workers			
				Total	Sugar	Pineapple	Other
January 6-12, 2002 . .	11,700	2,900	1,000	7,800	800	1,200	5,800
October 6-12, 2002 . .	NA	NA	NA	7,600	1,000	1,200	5,400
<b>January 12-18, 2003</b>	<b>NA</b>	<b>NA</b>	<b>NA</b>	<b>7,300</b>	<b>700</b>	<b>1,200</b>	<b>5,400</b>

NA = Not Available, data series discontinued starting July 2002.

<sup>1</sup> Estimates for week includes the 12th of each survey month.

<sup>2</sup> Includes family members and others working 15 or more hours per week.

## HOURLY WAGE RATE by Type of Worker, January 2003 <sup>1</sup>

Quarter	All hired farm workers				Field & Livestock workers			
	Hawaii		California	United States	Hawaii		California	United States
	Farms with 1 - 9 workers	All farms			Farms with 1 - 9 workers	All farms		
Dollars								
January 6-12, 2002 . . .	8.78	10.90	9.22 <sup>2</sup>	8.97 <sup>2</sup>	8.01	9.33	8.36 <sup>2</sup>	8.23 <sup>2</sup>
January 12-18, 2003 . .	9.04	11.04	9.38	9.32	7.89	9.36	8.46	8.50

<sup>1</sup> Perquisite such as room and board, housing, etc. are provided some workers in all categories, but the values are not included in the wage rates.

<sup>2</sup> Revised.

## U.S. Hired Workers Down 1 Percent, Wage Rates Up 4 Percent From a Year Ago

There were 884,000 hired workers on the Nation's farms and ranches during the week of January 12-18, 2003, down 1 percent from a year ago. Of these hired workers, 724,000 workers were hired directly by farm operators. Agricultural service employees on farms and ranches made up the remaining 160,000 workers.

Farm operators paid their hired workers an average wage rate of \$9.32 per hour during the January 2003 reference week, up 35 cents from a year earlier. Field workers received an average of \$8.29 per hour, up 4 cents from last January, while livestock workers earned \$8.91 per hour compared with \$8.20 a year earlier. The field and livestock worker combined wage rate, at \$8.50 per hour, was up 27 cents from last year.

The number of hours worked averaged 37.8 hours for hired workers during the survey week compared with 38.5 hours from a year ago.

**DONALD A. MARTIN**  
State Agricultural Statistician

**NILS K. MORITA**  
Research Statistician

**STEVE GUNN**  
Deputy State Agricultural Statistician

**KAREN A. LEE**  
Statistical Assistant