



California Crop Progress & Condition

Cooperating with the California Department of Food and Agriculture
Pacific Region • 650 Capitol Mall, Suite 6-100 • Sacramento, CA 95814 • (916) 738-6600 • (855) 270-2722 FAX •
www.nass.usda.gov/ca

WEEK ENDING: October 20, 2024
RELEASED: October 21, 2024

FREQUENCY: Weekly
VOL. 44 NO. 82

WEATHER

Temperature and precipitation information for California are not available this week.

FIELD CROPS

In the Sacramento Valley, **rice** harvest continued. Fields were prepped for planting wheat. In the San Joaquin Valley, **corn** for silage and **dry bean** harvests continued. **Cotton** harvest began. **Alfalfa** and **sudangrass** fields continued to mature. In Tulare County, corn fields were in the final stages of production, with most fields harvested. Cotton fields were defoliated and harvest has begun. Black-eyed beans were cut into windrows for drying. Some alfalfa fields were cut for hay and others were green chopped for local dairies.

FRUIT CROPS

Stone fruit harvest neared completion. The **nectarine** harvest was complete, while **peach, plum, prune,** and **pluot** harvests slowed. Growers applied herbicides to peaches. **Persimmon** harvest began. Pineapple **quince** were picked. **Pomegranate** and **fig** harvests continued. Most **pear** harvest was winding down except for Asian pears, which were in full swing. Wine **grape** harvest continued. Late variety table grape harvest continued, while some that were left on the vine were picked for juice. Raisin grapes were rolled and dried. **Kiwi** were harvested in some areas. District 2 **lemon** harvest neared completion, and District 3 lemon harvest began. Navel **oranges** were gaining good color. Harvest began in some areas on a limited basis, as growers in other areas prepared for harvest. Growers sprayed copper, lime, and zinc prior to the rainy season. The Valencia orange harvest was complete, with harvest ending ahead of last year. **Olive** harvest continued. **Raspberry, blackberry,** and **strawberry** harvests continued along the Central Coast.

NUT CROPS

Almond harvest neared completion and prepped for winter. **Pistachio, walnut,** and **pecan** harvests continued. Almonds, walnuts, and pistachios were sprayed with herbicides and insecticides.

VEGETABLE CROPS

Across California, **pumpkins** were harvested. In the Sacramento Valley, melons and organic **tomatoes** were harvested. In San Mateo County, **brussel sprouts, broccoli, lettuce,** and greens were harvested for local Farmers' Markets. In the Central Valley, **cucumbers, cantaloupe, watermelon, honeydew, sweet corn, zucchini, tomatillos, okra, eggplant, sweet potatoes, squash,** tomatoes, **garlic, onions,** and **carrots** were harvested and sold at local stands. Along the Central Coast, broccoli, brussel sprouts, **cauliflower, celery, kale,** garlic, squash, and lettuce continued to be harvested. Lettuce varieties and brassica crops have experienced some quality issues due to heat and the Diamondback Moth. Farmers took steps to minimize further damage. In the Imperial Valley, **bell peppers, cantaloupe,** and **chili peppers** were harvested.

LIVESTOCK

Despite recent light rain in the Sierras and northern California, rangeland and non-irrigated pasture were reported to be in poor to fair condition. Irrigated pasture remained in good condition. Some cattle were grazing on higher elevation range. Supplemental feeding was ongoing. Fall calving continued. Sheep grazed retired cropland and harvested vegetable fields. Some bees were moved in preparation for overwintering.

CALIFORNIA CROP WEATHER – WEEK ENDING OCTOBER 20, 2024

STATIONS	TEMPERATURE				GROWING DEGREE DAYS AT 50 °F BASE		RAIN DAYS ¹	PRECIPITATION ²			
	Average for Week Ending Oct 20, 2024	Departure from Normal ³	High	Low	This Year	Normal Year ³	This Season	This Week	This Season	Normal Season ³	Normal Year ³
					Jan 1 - Oct 20, 2024	Jan 1 - Oct 20, 2024	Oct 1 - Oct 20, 2024	Week Ending Oct 20, 2024	Oct 1 - Oct 20, 2024	Oct 1 - Oct 20, 2024	Oct 1 - Sept 30
-- Degrees Fahrenheit --				-- Number --		-- Days --	-- Inches of Precipitation --				
North Coast	NA	NA	NA	NA	NA	NA	NA	NA	NA	NA	40.61
Eureka WFO	NA	NA	NA	NA	NA	NA	NA	NA	NA	NA	35.07
Ukiah	NA	NA	NA	NA	NA	NA	NA	NA	NA	NA	34.00
Santa Rosa	NA	NA	NA	NA	NA	NA	NA	NA	NA	NA	20.36
Napa State Hospital	NA	NA	NA	NA	NA	NA	NA	NA	NA	NA	
Central Coast	NA	NA	NA	NA	NA	NA	NA	NA	NA	NA	
San Francisco	NA	NA	NA	NA	NA	NA	NA	NA	NA	NA	19.77
San Jose	NA	NA	NA	NA	NA	NA	NA	NA	NA	NA	13.58
Salinas	NA	NA	NA	NA	NA	NA	NA	NA	NA	NA	12.66
Monterey	NA	NA	NA	NA	NA	NA	NA	NA	NA	NA	16.36
Paso Robles	NA	NA	NA	NA	NA	NA	NA	NA	NA	NA	12.24
Sacramento Valley	NA	NA	NA	NA	NA	NA	NA	NA	NA	NA	
Redding	NA	NA	NA	NA	NA	NA	NA	NA	NA	NA	33.70
Red Bluff	NA	NA	NA	NA	NA	NA	NA	NA	NA	NA	23.25
Orland	NA	NA	NA	NA	NA	NA	NA	NA	NA	NA	21.52
Oroville	NA	NA	NA	NA	NA	NA	NA	NA	NA	NA	25.84
Marysville	NA	NA	NA	NA	NA	NA	NA	NA	NA	NA	20.21
Sacramento	NA	NA	NA	NA	NA	NA	NA	NA	NA	NA	18.10
San Joaquin Valley	NA	NA	NA	NA	NA	NA	NA	NA	NA	NA	
Stockton	NA	NA	NA	NA	NA	NA	NA	NA	NA	NA	13.53
Modesto	NA	NA	NA	NA	NA	NA	NA	NA	NA	NA	12.34
Merced	NA	NA	NA	NA	NA	NA	NA	NA	NA	NA	11.87
Madera	NA	NA	NA	NA	NA	NA	NA	NA	NA	NA	10.86
Fresno	NA	NA	NA	NA	NA	NA	NA	NA	NA	NA	11.05
Lemoore	NA	NA	NA	NA	NA	NA	NA	NA	NA	NA	7.23
Visalia	NA	NA	NA	NA	NA	NA	NA	NA	NA	NA	10.37
Bakersfield	NA	NA	NA	NA	NA	NA	NA	NA	NA	NA	6.40
Cascade Sierra	NA	NA	NA	NA	NA	NA	NA	NA	NA	NA	
Alturas	NA	NA	NA	NA	NA	NA	NA	NA	NA	NA	11.72
Mount Shasta	NA	NA	NA	NA	NA	NA	NA	NA	NA	NA	37.86
Blue Canyon	NA	NA	NA	NA	NA	NA	NA	NA	NA	NA	62.80
Yosemite Valley	NA	NA	NA	NA	NA	NA	NA	NA	NA	NA	40.65
South Coast	NA	NA	NA	NA	NA	NA	NA	NA	NA	NA	
Santa Maria	NA	NA	NA	NA	NA	NA	NA	NA	NA	NA	13.42
Santa Barbara	NA	NA	NA	NA	NA	NA	NA	NA	NA	NA	17.38
Oxnard	NA	NA	NA	NA	NA	NA	NA	NA	NA	NA	13.05
Riverside	NA	NA	NA	NA	NA	NA	NA	NA	NA	NA	9.48
Los Angeles	NA	NA	NA	NA	NA	NA	NA	NA	NA	NA	12.33
San Diego	NA	NA	NA	NA	NA	NA	NA	NA	NA	NA	9.87
Southeast Interior	NA	NA	NA	NA	NA	NA	NA	NA	NA	NA	
Bishop	NA	NA	NA	NA	NA	NA	NA	NA	NA	NA	4.87
Daggett	NA	NA	NA	NA	NA	NA	NA	NA	NA	NA	3.80
Lancaster	NA	NA	NA	NA	NA	NA	NA	NA	NA	NA	6.86
Thermal	NA	NA	NA	NA	NA	NA	NA	NA	NA	NA	2.98
Blythe	NA	NA	NA	NA	NA	NA	NA	NA	NA	NA	3.58
Imperial	NA	NA	NA	NA	NA	NA	NA	NA	NA	NA	2.39

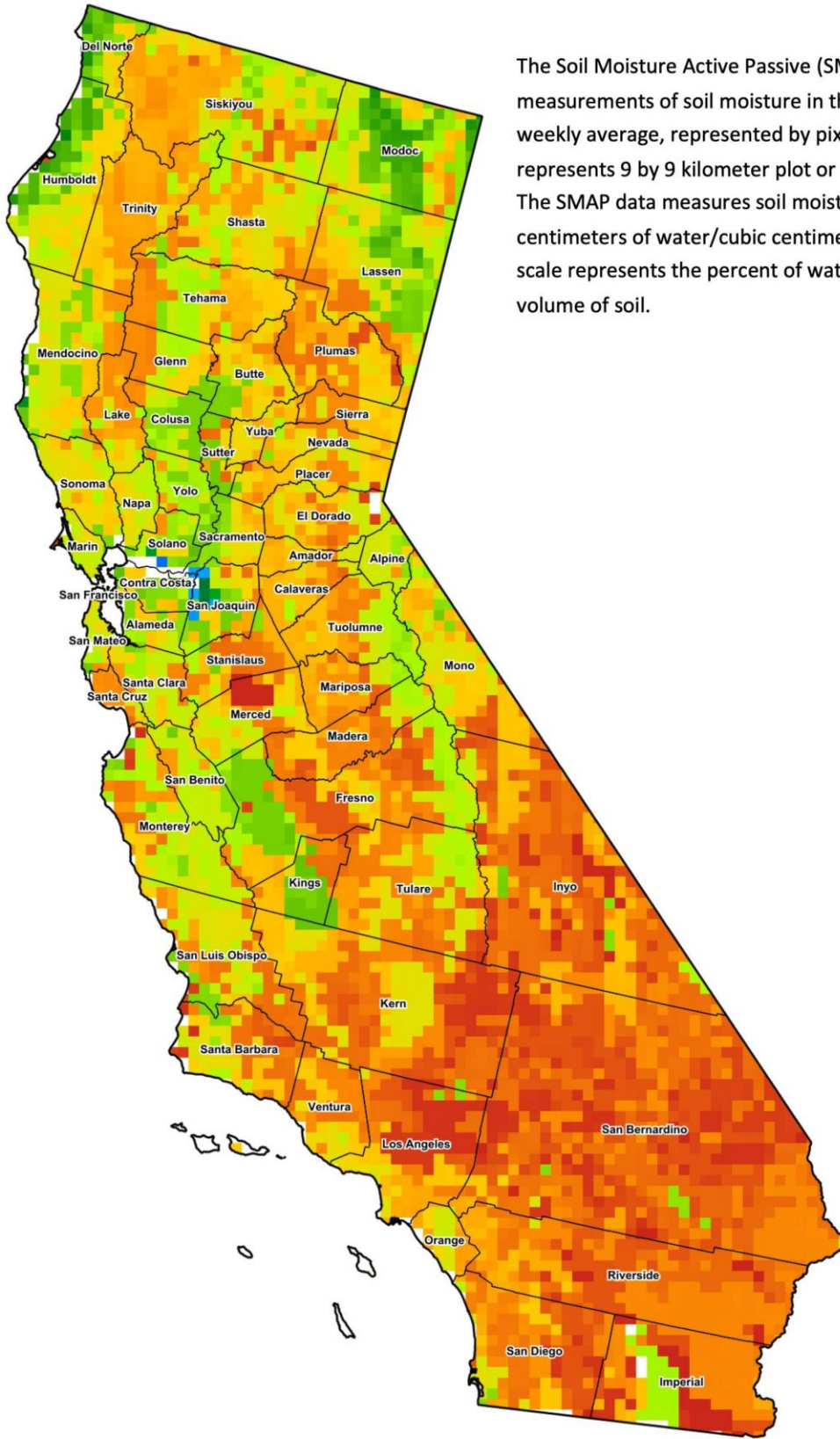
¹ Total number of days with precipitation events this season.
² Rain or melted snow/ice.
³ Normal periods 1990-2020 used in departure from normal calculations.
 (NA) Not available at time of publication.

Data retrieved from NOAA and NWS. Calculated by USDA NASS.
 All rights reserved.

Reservoir Data from the California Department of Water Resources

Reservoir	Capacity	Oct 20, 2024			This Date Last Year	
		Storage	Percent of Capacity	Percent of Average	Storage	Percent of Capacity
	<i>Acre Feet</i>	<i>Acre Feet</i>	<i>Percent</i>	<i>Percent</i>	<i>Acre Feet</i>	<i>Percent</i>
Shasta Lake	4,547,300	2,656,842	58	108	3,212,017	71
Lake Oroville	3,537,400	1,764,665	50	96	2,477,315	70
Trinity Lake	2,443,800	1,653,081	68	114	1,240,186	51
New Melones Reservoir	2,413,000	1,805,222	75	139	1,892,919	79
San Luis Reservoir	2,057,200	1,034,285	51	115	1,494,851	73
Don Pedro Reservoir	2,030,000	1,456,074	72	108	1,667,862	82

Source: cdec.water.ca.gov/reportapp/javareports?name=DLYHYDRO



The Soil Moisture Active Passive (SMAP) provides measurements of soil moisture in the root zone as a weekly average, represented by pixels. Each pixel represents 9 by 9 kilometer plot or about 20,000 acres. The SMAP data measures soil moisture in cubic centimeters of water/cubic centimeters of soil. The scale represents the percent of water in a given volume of soil.



Drought Conditions from the U.S. Drought Monitor as of 10/15/2024

Time	Percent of Land in Drought Rating						Drought Severity (DSCI)
	None	D0	D1	D2	D3	D4	
Current	24.68	61.28	9.74	4.30	0.00	0.00	94
Last Week	24.68	61.55	12.06	1.72	0.00	0.00	91
3 Months Ago	78.80	19.59	1.62	0.00	0.00	0.00	23
One Year Ago	94.32	5.68	0.00	0.00	0.00	0.00	6

The U.S. Drought Monitor is jointly produced by the National Drought Mitigation Center at the University of Nebraska-Lincoln, the United States Department of Agriculture, and the National Oceanic and Atmospheric Administration. droughtmonitor.unl.edu/CurrentMap/StateDroughtMonitor.aspx?CA