



California Crop Progress & Condition

Cooperating with the California Department of Food and Agriculture
Pacific Region • 650 Capitol Mall, Suite 6-100 • Sacramento, CA 95814 • (916) 738-6600 • (855) 270-2722 FAX •
www.nass.usda.gov/ca

WEEK ENDING: August 11, 2024
RELEASED: August 12, 2024

FREQUENCY: Weekly
VOL. 44 NO. 72

WEATHER

Average low temperatures for California ranged from 32 to 72 in the mountains, 49 to 71 along the coast, 58 to 78 in the Central Valley, and 60 to 94 in the desert. Average high temperatures for the state ranged from 61 to 109 along the coast, 62 to 97 in the mountains, 95 to 112 in the Central Valley, and 100 to 114 in the desert.

FIELD CROPS

In Sutter County, **sunflower** fields were prepared for harvest. **Rice** fields headed out. In the Sacramento Valley, sunflower and **safflower** fields dried down. Rice fields continued to develop. In the San Joaquin Valley, **cotton** squaring and boll set progressed. In Tulare County, **corn** fields were tasseling and setting ears, with many fields at full height. Cotton fields continued to develop. **Alfalfa** fields were cut, dried, and baled. Irrigation was the priority for all row crops due to high temperatures. **Dry beans** continued to grow with many plants producing pods.

FRUIT CROPS

Stone fruit and citrus orchards were fertilized and sprayed with fungicides, herbicides, and insecticides; pruning and shredding continued. Irrigation continued in stone fruit orchards as temperatures remained high. Smoke from the Park Fire continued to settle in the Sacramento Valley causing some difficulty with harvest. **Peach, plum, pluot, and nectarine** harvests were in full swing. Prolonged excessive heat has cooked the fruit on the inside causing some fruit to go rancid and become not marketable. **Prunes** were harvested and sent to the dehydrators. **Fig** harvest continued. **Persimmons, pomegranates,** and Asian **pears** continued to develop. Bartlett pear harvest continued in the Sacramento Delta region. **Grape** harvest continued in the Coachella and Central Valleys. Fog attributed to mildew pressure in wine grapes throughout the Central Coast. Some late variety grapes were covered with plastic sheeting to protect from the rain. Growers pulled leaves to allow for better airflow and light. **Kiwi** canopies were tended to and tied. Valencia **orange, grapefruit, lemon,** and **avocado** harvests continued. Fruit thinning started in mandarin groves. Citrus groves were sprayed with whitewash to prevent sunburn. Harvested citrus orchards were pruned, topped, and fertilized. **Olives** continued to develop as growers prepared for harvest. **Raspberry, blackberry,** and **strawberry** harvests continued along the Central Coast.

NUT CROPS

Additional irrigation continued due to high day and nighttime temperatures. Early variety **almond** harvest began in parts of the Central Valley. Nut development continued in **pistachio, pecan,** and **walnut** orchards. Pistachio clusters gained size. Walnuts neared full shell size. Insecticides were applied in walnut orchards.

VEGETABLE CROPS

Across California, processing **tomatoes** continued to be harvested and sent to canneries. Extreme temperatures caused some quality issues. Cherry tomatoes and organic **watermelon** were harvested in the Sacramento Valley. In the Central Valley, **cucumbers,** watermelon, **cantaloupe, honeydew, sweet corn, zucchini, tomatillos, okra, eggplant, squash, garlic, carrots, bell peppers** and **onions** were harvested and sold at local stands. Along the Central Coast, **broccoli, brussel sprouts, cauliflower, celery, kale,** garlic, squash, and **lettuce** continued to be harvested. In the Imperial Valley, bell peppers, eggplant, onions, melons, **chili peppers, green beans,** and sweet corn were harvested.

LIVESTOCK

Rangeland and non-irrigated pasture were reported to be in poor to fair condition. Irrigated pasture remained in good to excellent condition. Sheep grazed on fallow fields and retired farmland. Supplemental feeding of cattle continued. Some cattle grazed upper elevation and some foothill range due to forage quality decline on lower elevation range. Heat stress mitigation measures, including fans and sprinklers, continued to be implemented at many dairies in the San Joaquin Valley.

CALIFORNIA CROP WEATHER – WEEK ENDING August 11, 2024

STATIONS	TEMPERATURE				GROWING DEGREE DAYS AT 50 °F BASE		RAIN DAYS ¹	PRECIPITATION ²			
	Average for Week Ending Aug 11, 2024	Departure from Normal ³	High	Low	This Year	Normal Year ³	This Season	This Week	This Season	Normal Season ³	Normal Year ³
					Jan 1 - Aug 11, 2024	Jan 1 - Aug 11, 2024	Oct 1 - Aug 11, 2024	Week Ending Aug 11, 2024	Oct 1 - Aug 11, 2024	Oct 1 - Aug 11, 2024	Oct 1 - Sept 30
	-- Degrees Fahrenheit --				-- Number --		-- Days --	-- Inches of Precipitation --			
North Coast											
Eureka WFO	58	-1	64	50	NA	NA	NA	0.02	NA	NA	40.61
Ukiah	81	6	106	55	NA	NA	NA	0.00	NA	NA	35.07
Santa Rosa	69	1	94	49	NA	NA	NA	0.00	NA	NA	34.00
Napa State Hospital	66	-1	88	52	NA	NA	NA	0.00	NA	NA	20.36
Central Coast											
San Francisco	60	-5	74	51	NA	NA	NA	0.00	NA	NA	19.77
San Jose	72	2	92	59	NA	NA	NA	0.00	NA	NA	13.58
Salinas	63	-1	77	52	NA	NA	NA	0.00	NA	NA	12.66
Monterey	59	-3	70	51	NA	NA	NA	0.00	NA	NA	16.36
Paso Robles	80	6	106	55	NA	NA	NA	0.00	NA	NA	12.24
Sacramento Valley											
Redding	85	3	106	62	NA	NA	NA	0.00	NA	NA	33.70
Red Bluff	84	3	105	62	NA	NA	NA	0.00	NA	NA	23.25
Orland	82	4	101	63	NA	NA	NA	0.00	NA	NA	21.52
Oroville	85	5	106	63	NA	NA	NA	0.00	NA	NA	25.84
Marysville	82	4	104	58	NA	NA	NA	0.00	NA	NA	20.21
Sacramento	80	4	104	59	NA	NA	NA	0.00	NA	NA	18.10
San Joaquin Valley											
Stockton	82	4	105	60	NA	NA	NA	0.00	NA	NA	13.53
Modesto	84	6	105	66	NA	NA	NA	0.00	NA	NA	12.34
Merced	85	6	107	65	NA	NA	NA	0.00	NA	NA	11.87
Madera	86	6	111	63	NA	NA	NA	0.00	NA	NA	10.86
Fresno	90	7	110	73	NA	NA	NA	0.00	NA	NA	11.05
Lemoore	NA	NA	NA	NA	NA	NA	NA	NA	NA	NA	7.23
Visalia	88	8	105	71	NA	NA	NA	0.00	NA	NA	10.37
Bakersfield	91	7	111	74	NA	NA	NA	0.00	NA	NA	6.40
Cascade Sierra											
Alturas	70	3	95	43	NA	NA	NA	0.00	NA	NA	11.72
Mount Shasta	74	6	97	49	NA	NA	NA	0.00	NA	NA	37.86
Blue Canyon	78	7	87	68	NA	NA	NA	0.00	NA	NA	62.80
Yosemite Valley	76	2	85	67	NA	NA	NA	0.00	NA	NA	40.65
South Coast											
Santa Maria	64	0	80	53	NA	NA	NA	0.00	NA	NA	13.42
Santa Barbara	66	0	79	57	NA	NA	NA	0.00	NA	NA	17.38
Oxnard	67	0	78	58	NA	NA	NA	0.00	NA	NA	13.05
Riverside	84	4	109	66	NA	NA	NA	0.00	NA	NA	9.48
Los Angeles	71	1	82	63	NA	NA	NA	0.00	NA	NA	12.33
San Diego	74	2	85	67	NA	NA	NA	0.00	NA	NA	9.87
Southeast Interior											
Bishop	84	7	106	60	NA	NA	NA	0.00	NA	NA	4.87
Daggett	97	7	113	80	NA	NA	NA	0.00	NA	NA	3.80
Lancaster	90	8	109	67	NA	NA	NA	0.00	NA	NA	6.86
Thermal	95	4	112	78	NA	NA	NA	0.00	NA	NA	2.98
Blythe	98	3	114	79	NA	NA	NA	0.00	NA	NA	3.58
Imperial	94	0	112	82	NA	NA	NA	0.00	NA	NA	2.39

¹ Total number of days with precipitation events this season.
² Rain or melted snow/ice.
³ Normal periods 1990-2020 used in departure from normal calculations.
 (NA) Not available at time of publication.

Data retrieved from NOAA and NWS. Calculated by USDA NASS.
 All rights reserved.

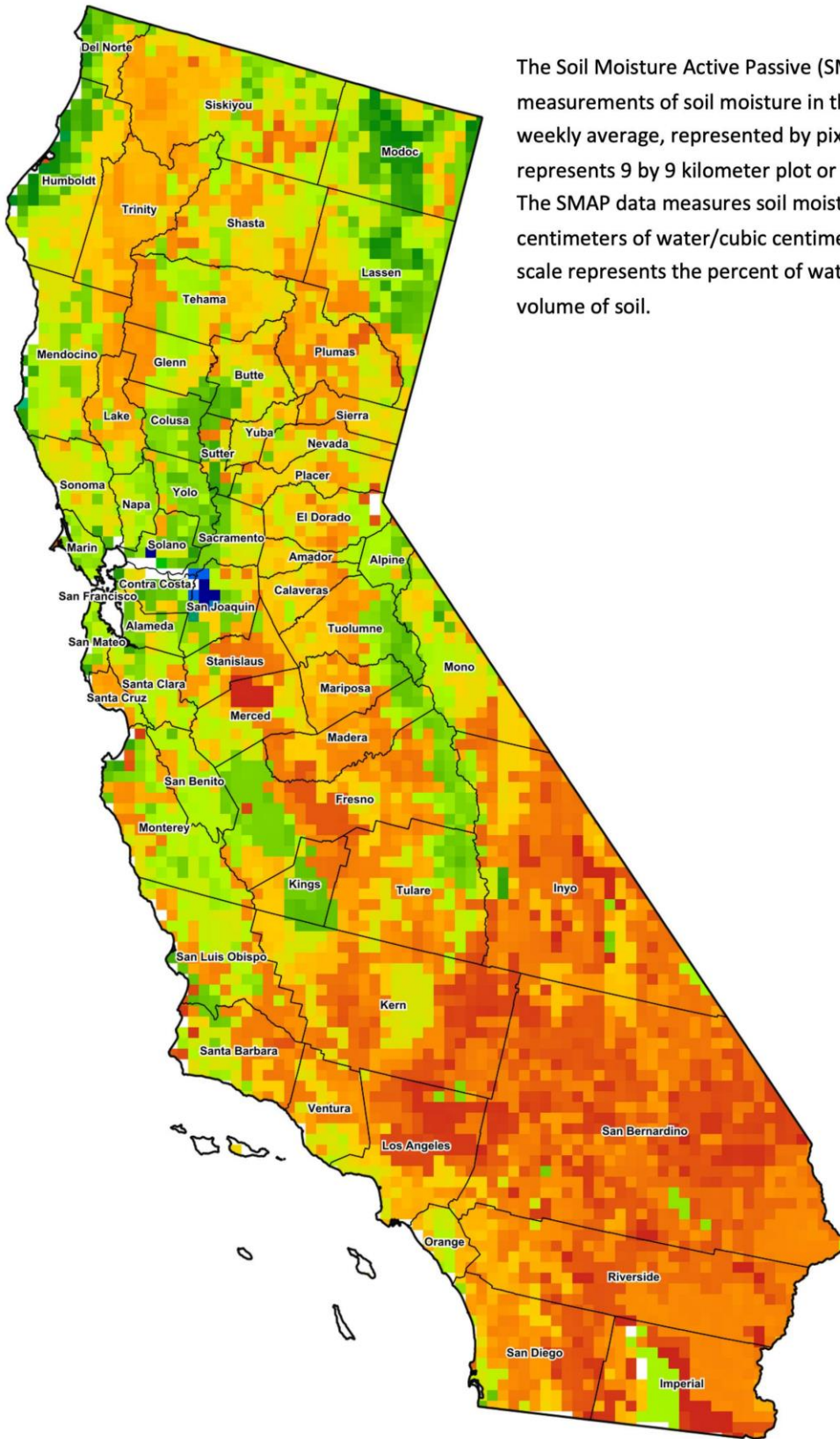
Reservoir Data from the California Department of Water Resources

Reservoir	Capacity	Aug 11, 2024			This Date Last Year	
		Storage	Percent of Capacity	Percent of Average	Storage	Percent of Capacity
	<i>Acre Feet</i>	<i>Acre Feet</i>	<i>Percent</i>	<i>Percent</i>	<i>Acre Feet</i>	<i>Percent</i>
Shasta Lake	4,547,300	3,277,206	72	110	3,747,387	82
Lake Oroville	3,537,400	2,590,352	73	115	3,083,746	87
Trinity Lake	2,443,800	1,895,214	77	111	1,384,673	57
New Melones Reservoir	2,413,000	1,909,550	80	134	1,989,963	83
San Luis Reservoir	2,057,200	877,224	43	104	1,801,331	88
Don Pedro Reservoir	2,030,000	1,695,023	83	109	1,912,247	94

Source: cdec.water.ca.gov/reportapp/javareports?name=DLYHYDRO



California Soil Moisture Map for the Week of July 29 - August 4, 2024



The Soil Moisture Active Passive (SMAP) provides measurements of soil moisture in the root zone as a weekly average, represented by pixels. Each pixel represents 9 by 9 kilometer plot or about 20,000 acres. The SMAP data measures soil moisture in cubic centimeters of water/cubic centimeters of soil. The scale represents the percent of water in a given volume of soil.

Percent Soil Moisture

- 0%
- 5%
- 10%
- 15%
- 20%
- 25%
- 30%
- 35%
- 40%
- 45%
- 50%
- 55%
- 60%
- >65%

Drought Conditions from the U.S. Drought Monitor as of 8/6/2024

Time	Percent of Land in Drought Rating						Drought Severity (DSCI)
	None	D0	D1	D2	D3	D4	
Current	77.26	17.43	5.32	0.00	0.00	0.00	28
Last Week	78.78	16.77	4.44	0.00	0.00	0.00	26
3 Months Ago	97.32	2.68	0.00	0.00	0.00	0.00	3
One Year Ago	74.55	18.18	7.28	0.00	0.00	0.00	33

The U.S. Drought Monitor is jointly produced by the National Drought Mitigation Center at the University of Nebraska-Lincoln, the United States Department of Agriculture, and the National Oceanic and Atmospheric Administration. droughtmonitor.unl.edu/CurrentMap/StateDroughtMonitor.aspx?CA