



# California Crop Progress & Condition

Cooperating with the California Department of Food and Agriculture  
Pacific Region • 650 Capitol Mall, Suite 6-100 • Sacramento, CA 95814 • (916) 738-6600 • (855) 270-2722 FAX •  
[www.nass.usda.gov/ca](http://www.nass.usda.gov/ca)

**WEEK ENDING: July 21, 2024**  
**RELEASED: July 22, 2024**

**FREQUENCY: Weekly**  
**VOL. 44 NO. 69**

## WEATHER

Average low temperatures for California ranged from 32 to 67 in the mountains, 47 to 68 along the coast, 55 to 76 in the Central Valley, and 56 to 88 in the desert. Average high temperatures for the state ranged from 58 to 106 along the coast, 62 to 97 in the mountains, 91 to 112 in the Central Valley, and 95 to 115 in the desert.

## FIELD CROPS

In the Sacramento Valley, **rice** fields continued to grow. Most small grains have been harvested. In San Mateo County, **dry beans** continued to develop. In the San Joaquin Valley, **cotton** squaring and boll set progressed. In Tulare County, **corn** fields were tasseling and setting ears. Cotton fields continued to develop. **Alfalfa** fields were cut for a second time. Most harvested winter grain fields have been planted with summer silage crops such as corn and **sorghum**. **Wheat** and **oat** harvests were complete. Dry bean fields continued to grow with some fields producing pods. Due to high temperatures, irrigating all row crops was a priority.

## FRUIT CROPS

Stone fruit and citrus orchards were fertilized and sprayed with fungicides, herbicides, and insecticides; pruning and shredding continued. Irrigation continued in stone fruit orchards as temperatures remained high. **Peach**, **plum**, and **nectarine** harvests were in full swing. **Prunes** were harvested and sent to the dehydrators. **Persimmons**, **pomegranates**, and Asian **pears** continued to develop. Bartlett pear harvest began in the Sacramento Delta region. **Grape** harvest continued in the Coachella Valley and was just beginning in the Central Valley. Growers continued to increase their vine nutrition program and thinned the crop to reduce berry damage from the extensive heat wave. Growers continued to apply a polymer coating in grape vineyards to help prevent vine stress. **Kiwi** canopies were tended to and tied. Valencia **orange**, **grapefruit**, **lemon**, and **avocado** harvests continued. Netting continued to be removed from mandarin and **tangerine** orchards. Citrus groves were sprayed with whitewash to prevent sunburn. **Olives** continued to develop. **Raspberry**, **blackberry**, and **strawberry** harvests continued along the Central Coast.

## NUT CROPS

Additional irrigation continued due to high day and nighttime temperatures. **Almond** hull split continued in some areas as growers prepared for harvest. Nut development continued in **pistachio**, **pecan**, and **walnut** orchards. Insecticides were applied in walnut orchards.

## VEGETABLE CROPS

Across California, processing **tomatoes** continued to be harvested and sent to canneries. In the Sacramento Valley, organic cherry and heirloom tomatoes were harvested. Organic **watermelon** harvest continued in the Capay Valley. In San Mateo County, **brussel sprouts** and **pumpkins** continued to grow. In the San Joaquin Valley, melon harvest continued. In the Central Valley, **sweet corn**, **zucchini**, **eggplant**, **squash**, and **onions** continued to grow and develop. Watermelon, **cantaloupe**, and **honeydew** continued to flower. **Garlic**, **carrots**, and **bell peppers** were harvested. Along the Central Coast, **broccoli**, brussel sprouts, **cauliflower**, **celery**, **kale**, garlic, squash, and **lettuce** continued to be harvested. In the Imperial Valley, bell peppers, carrots, eggplant, onions, melons, **chili peppers**, **green beans**, and sweet corn were harvested.

## LIVESTOCK

Rangeland and non-irrigated pasture were reported to be in poor to fair condition. Hot weather continued to dry out non-irrigated pasture. Irrigated pasture was in good to excellent condition. Sheep grazed on fallow fields, retired farmland, and orchard weeds. Bees were active in sunflower and melon fields. Some cattle were moved to upper elevation range as valley and foothill range conditions deteriorated. Cattle remaining on poor range were provided supplemental feed. Heat stress mitigation measures, including fans and sprinklers, were utilized at some dairies.

**CALIFORNIA CROP WEATHER – WEEK ENDING JULY 21, 2024**

STATIONS	TEMPERATURE				GROWING DEGREE DAYS AT 50 °F BASE		RAIN DAYS <sup>1</sup>	PRECIPITATION <sup>2</sup>			
	Average for Week Ending Jul 21, 2024	Departure from Normal <sup>3</sup>	High	Low	This Year	Normal Year <sup>3</sup>	This Season	This Week	This Season	Normal Season <sup>3</sup>	Normal Year <sup>3</sup>
					Jan 1 - Jul 21, 2024	Jan 1 - Jul 21, 2024	Oct 1 - Jul 21, 2024	Week Ending Jul 21, 2024	Oct 1 - Jul 21, 2024	Oct 1 - Jul 21, 2024	Oct 1 - Sept 30
-- Degrees Fahrenheit --				-- Number --		-- Days --	-- Inches of Precipitation --				
<b>North Coast</b>											
Eureka WFO	59	1	67	52	NA	NA	NA	0.00	NA	NA	40.61
Ukiah	76	0	102	52	NA	NA	NA	0.00	NA	NA	35.07
Santa Rosa	70	2	106	47	NA	NA	NA	0.00	NA	NA	34.00
Napa State Hospital	70	3	97	52	NA	NA	NA	0.00	NA	NA	20.36
<b>Central Coast</b>											
San Francisco	64	0	81	54	NA	NA	NA	0.00	NA	NA	19.77
San Jose	73	3	95	60	NA	NA	NA	0.00	NA	NA	13.58
Salinas	65	2	78	54	NA	NA	NA	0.00	NA	NA	12.66
Monterey	62	0	74	53	NA	NA	NA	0.00	NA	NA	16.36
Paso Robles	77	3	104	51	NA	NA	NA	0.00	NA	NA	12.24
<b>Sacramento Valley</b>											
Redding	87	3	111	64	NA	NA	NA	0.00	NA	NA	33.70
Red Bluff	86	3	112	60	NA	NA	NA	0.00	NA	NA	23.25
Orland	81	2	103	59	NA	NA	NA	0.00	NA	NA	21.52
Oroville	83	2	103	59	NA	NA	NA	0.00	NA	NA	25.84
Marysville	83	4	110	56	NA	NA	NA	0.00	NA	NA	20.21
Sacramento	80	3	104	57	NA	NA	NA	0.00	NA	NA	18.10
<b>San Joaquin Valley</b>											
Stockton	80	2	106	55	NA	NA	NA	0.00	NA	NA	13.53
Modesto	81	2	103	56	NA	NA	NA	0.00	NA	NA	12.34
Merced	82	3	103	59	NA	NA	NA	0.00	NA	NA	11.87
Madera	82	1	103	59	NA	NA	NA	0.00	NA	NA	10.86
Fresno	87	3	103	64	NA	NA	NA	0.00	NA	NA	11.05
Lemoore	NA	NA	NA	NA	NA	NA	NA	NA	NA	NA	7.23
Visalia	85	4	102	67	NA	NA	NA	0.00	NA	NA	10.37
Bakersfield	88	3	103	69	NA	NA	NA	0.00	NA	NA	6.40
<b>Cascade Sierra</b>											
Alturas	72	3	96	43	NA	NA	NA	0.00	NA	NA	11.72
Mount Shasta	74	5	97	49	NA	NA	NA	0.00	NA	NA	37.86
Blue Canyon	74	3	84	62	NA	NA	NA	0.00	NA	NA	62.80
Yosemite Valley	72	-2	81	61	NA	NA	NA	0.41	NA	NA	40.65
<b>South Coast</b>											
Santa Maria	63	-1	73	50	NA	NA	NA	0.00	NA	NA	13.42
Santa Barbara	66	0	76	57	NA	NA	NA	0.00	NA	NA	17.38
Oxnard	67	0	75	61	NA	NA	NA	0.00	NA	NA	13.05
Riverside	81	2	101	65	NA	NA	NA	0.00	NA	NA	9.48
Los Angeles	69	-1	76	62	NA	NA	NA	0.00	NA	NA	12.33
San Diego	72	1	78	67	NA	NA	NA	0.00	NA	NA	9.87
<b>Southeast Interior</b>											
Bishop	81	2	103	56	NA	NA	NA	0.00	NA	NA	4.87
Daggett	94	4	111	79	NA	NA	NA	0.06	NA	NA	3.80
Lancaster	87	4	105	65	NA	NA	NA	0.00	NA	NA	6.86
Thermal	95	3	115	77	NA	NA	NA	0.00	NA	NA	2.98
Blythe	100	5	115	84	NA	NA	NA	0.00	NA	NA	3.58
Imperial	97	3	114	82	NA	NA	NA	0.00	NA	NA	2.39

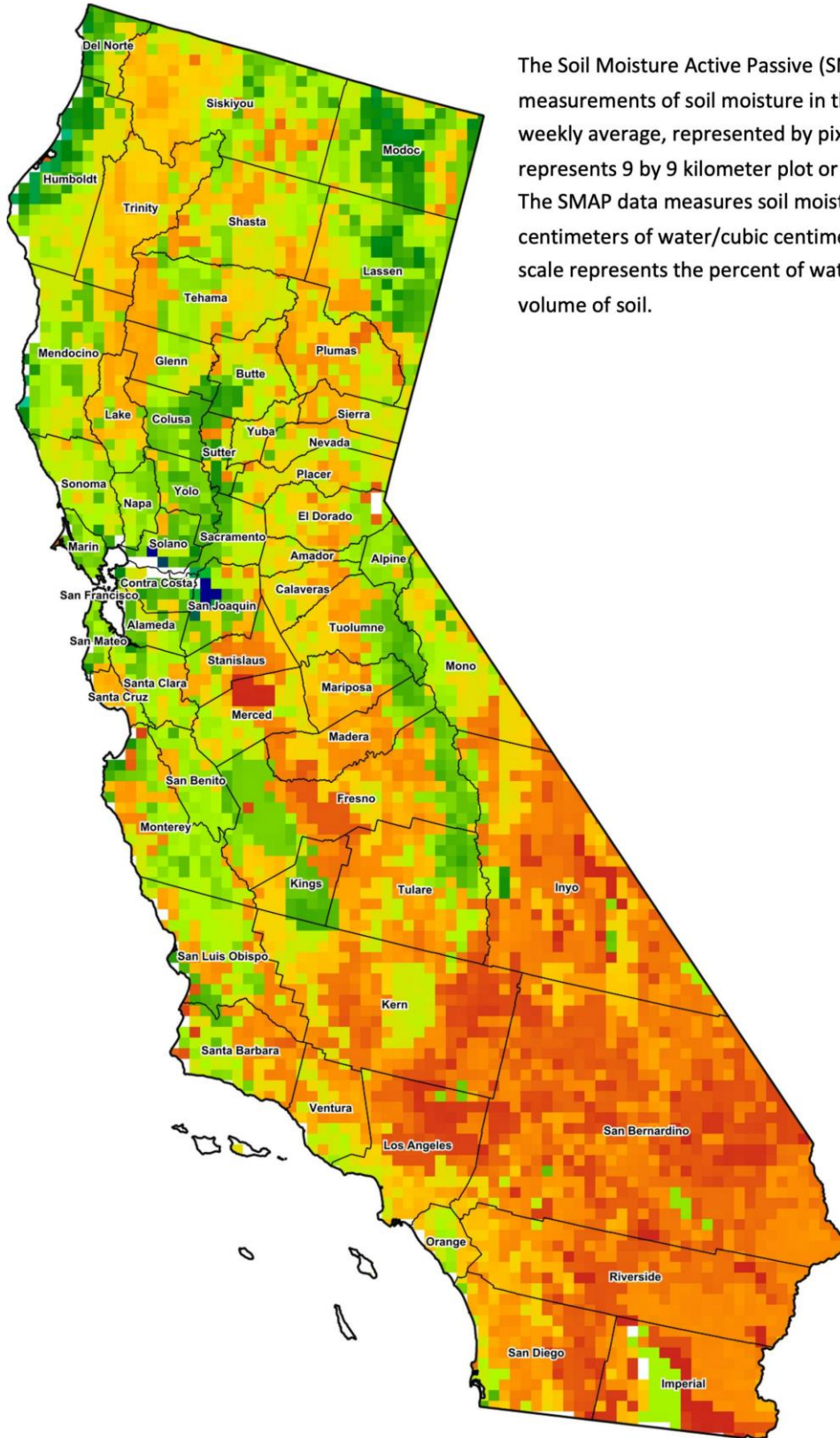
<sup>1</sup> Total number of days with precipitation events this season.  
<sup>2</sup> Rain or melted snow/ice.  
<sup>3</sup> Normal periods 1990-2020 used in departure from normal calculations.  
 (NA) Not available at time of publication.

Data retrieved from NOAA and NWS. Calculated by USDA NASS.  
 All rights reserved.

**Reservoir Data from the California Department of Water Resources**

Reservoir	Capacity	July 21, 2024			This Date Last Year	
		Storage	Percent of Capacity	Percent of Average	Storage	Percent of Capacity
	<i>Acre Feet</i>	<i>Acre Feet</i>	<i>Percent</i>	<i>Percent</i>	<i>Acre Feet</i>	<i>Percent</i>
Shasta Lake	4,547,300	3,629,680	80	112	4,024,196	88
Lake Oroville	3,537,400	2,921,813	83	119	3,369,959	95
Trinity Lake	2,443,800	1,976,161	81	110	1,418,418	58
New Melones Reservoir	2,413,000	1,957,035	82	133	2,057,265	86
San Luis Reservoir	2,057,200	905,343	44	95	1,912,610	94
Don Pedro Reservoir	2,030,000	1,798,628	89	111	1,959,718	97

Source: [cdec.water.ca.gov/reportapp/javareports?name=DLYHYDRO](https://cdec.water.ca.gov/reportapp/javareports?name=DLYHYDRO)



**Drought Conditions from the U.S. Drought Monitor as of 7/16/2024**

Time	Percent of Land in Drought Rating						Drought Severity (DSCI)
	None	D0	D1	D2	D3	D4	
Current	78.80	19.59	1.62	0.00	0.00	0.00	23
Last Week	80.72	18.50	0.77	0.00	0.00	0.00	20
3 Months Ago	97.32	2.68	0.00	0.00	0.00	0.00	3
One Year Ago	74.45	19.26	6.29	0.00	0.00	0.00	32

The U.S. Drought Monitor is jointly produced by the National Drought Mitigation Center at the University of Nebraska-Lincoln, the United States Department of Agriculture, and the National Oceanic and Atmospheric Administration. [droughtmonitor.unl.edu/CurrentMap/StateDroughtMonitor.aspx?CA](http://droughtmonitor.unl.edu/CurrentMap/StateDroughtMonitor.aspx?CA)