



# California Crop Progress & Condition

Cooperating with the California Department of Food and Agriculture  
Pacific Region • 650 Capitol Mall, Suite 6-100 • Sacramento, CA 95814 • (916) 738-6600 • (855) 270-2722 FAX •  
[www.nass.usda.gov/ca](http://www.nass.usda.gov/ca)

**WEEK ENDING: May 26, 2024**  
**RELEASED: May 28, 2024**

**FREQUENCY: Weekly**  
**VOL. 44 NO. 61**

## WEATHER

Average low temperatures for California ranged from 27 to 49 in the mountains, 40 to 70 in the desert, 41 to 61 along the coast, and 47 to 65 in the Central Valley. Average high temperatures for the state ranged from 54 to 77 in the mountains, 56 to 89 along the coast, 70 to 98 in the desert, and 73 to 92 in the Central Valley. From the California Department of Water Resources (DWR), snowpack water content in the Northern Sierra was 8.2 inches compared to 27.0 inches this date last year; Central Sierra was 6.0 inches compared to 33.9 inches this date last year; Southern Sierra was 2.8 inches compared to 30.3 inches this date last year.

## FIELD CROPS

In the Sacramento Valley, **rice**, **dry bean**, and **sunflower** planting continued. Herbicides were applied to rice fields. **Corn** and **safflower** fields continued to develop. In the San Joaquin Valley, **cotton** planting neared completion and corn fields were sprayed. **Alfalfa**, **oats**, and **wheat** were harvested for hay and silage. Along the Central Coast, **hay** was cut and baled. In Tulare County, winter forage silage harvest neared completion. Harvested winter grain fields were fertilized, tilled, and planted with summer silage crops such as corn and **sorghum**. Corn silage fields were growing well. Alfalfa was cut, raked, and baled.

## FRUIT CROPS

Fruit orchards were fertilized and sprayed with fungicides, herbicides, and insecticides. Fruit development continued in **grape** and **kiwi** vineyards. Grape vineyards were pruned and tied. Stone fruit harvest continued with early season **apricots**, **peaches**, **nectarines**, and **cherries**. Reflective mylar sheeting was placed in orchards to speed up the coloring of stone fruit. **Plum**, **prune**, and **peach** orchards were pruned and thinned to promote fruit growth. Asian **pear** fruit were developing. Valencia **orange** harvest continued and Navel orange harvest neared completion. **Grapefruit**, **mandarin**, **minneola**, and **lemon** harvests continued. **Olive** bloom and fruit set continued. **Strawberries** and **blueberries** were harvested. Some older blueberry fields were removed. **Blackberry** vines bloomed. **Avocado** harvest continued in Ventura County.

## NUT CROPS

Irrigation season was in full swing. Nitrogen and potassium applications continued. As **almond** nut fill continued to progress ahead of schedule, growers planned to cease nitrogen application soon. Growers continued to apply fungicides, herbicides, and insecticides when necessary. Nut development continued in **pistachio** and **walnut** orchards. Some instances of blight showed in walnut groves because of heavy spring rains.

## VEGETABLE CROPS

Across California, **tomatoes** continued to be planted. In the Sacramento Valley, **melons** were planted, and organic **asparagus** harvest neared completion. In the Central Valley, **onions**, **zucchini**, **squash**, **eggplant**, and **garlic** continued to develop. Melons were planted for summer harvest. Along the Central Coast, **broccoli**, **brussel sprouts**, **cauliflower**, **celery**, **kale**, garlic, squash, and **lettuce** continued to be harvested. In the Imperial Valley, **bell peppers**, **carrots**, eggplant, onions, **cantaloupe**, **green onions**, **chili peppers**, **green beans**, and **sweet corn** were harvested.

## LIVESTOCK

Rangeland and non-irrigated pasture were reported to be in fair to good condition. Non-irrigated pasture was beginning to dry out in many locations. Irrigated pasture was in good to excellent condition. Bees were active in melon fields. Sheep continued weed control activities in orchards and grazed on retired cropland. Cattle were moved to upper elevation range.

**CALIFORNIA CROP WEATHER – WEEK ENDING MAY 26, 2024**

| STATIONS                  | TEMPERATURE                          |                                    |      |     | GROWING DEGREE DAYS AT 50 °F BASE |                          | RAIN DAYS <sup>1</sup> | PRECIPITATION <sup>2</sup>    |                      |                            |                          |
|---------------------------|--------------------------------------|------------------------------------|------|-----|-----------------------------------|--------------------------|------------------------|-------------------------------|----------------------|----------------------------|--------------------------|
|                           | Average for Week Ending May 26, 2024 | Departure from Normal <sup>3</sup> | High | Low | This Year                         | Normal Year <sup>3</sup> | This Season            | This Week                     | This Season          | Normal Season <sup>3</sup> | Normal Year <sup>3</sup> |
|                           |                                      |                                    |      |     | Jan 1 - May 26, 2024              | Jan 1 - May 26, 2024     | Oct 1 - May 26, 2024   | Week Ending May 26, 2024      | Oct 1 - May 26, 2024 | Oct 1 - May 26, 2024       | Oct 1 - Sept 30          |
|                           | -- Degrees Fahrenheit --             |                                    |      |     | -- Number --                      |                          | -- Days --             | -- Inches of Precipitation -- |                      |                            |                          |
| <b>North Coast</b>        |                                      |                                    |      |     |                                   |                          |                        |                               |                      |                            |                          |
| Eureka WFO                | 51                                   | -3                                 | 60   | 41  | 277                               | 142                      | 116                    | 0.07                          | 46.05                | 38.66                      | 40.61                    |
| Ukiah                     | 65                                   | 1                                  | 87   | 47  | 905                               | 644                      | 84                     | 0.00                          | 38.37                | 34.35                      | 35.07                    |
| Santa Rosa                | 62                                   | 0                                  | 89   | 43  | 789                               | 621                      | 75                     | 0.00                          | 37.48                | 33.35                      | 34.00                    |
| Napa State Hospital       | 60                                   | -2                                 | 80   | 44  | 717                               | 596                      | 65                     | 0.00                          | 19.91                | 19.94                      | 20.36                    |
| <b>Central Coast</b>      |                                      |                                    |      |     |                                   |                          |                        |                               |                      |                            |                          |
| San Francisco             | 60                                   | -1                                 | 77   | 51  | 994                               | 849                      | 66                     | 0.00                          | 20.14                | 19.46                      | 19.77                    |
| San Jose                  | 64                                   | 0                                  | 83   | 50  | 1,302                             | 968                      | 64                     | 0.00                          | 17.06                | 13.24                      | 13.58                    |
| Salinas                   | 58                                   | -2                                 | 68   | 48  | 898                               | 814                      | 62                     | 0.02                          | 14.75                | 12.46                      | 12.66                    |
| Monterey                  | 56                                   | -2                                 | 66   | 50  | 651                               | 746                      | 73                     | 0.03                          | 17.37                | 16.05                      | 16.36                    |
| Paso Robles               | 60                                   | -5                                 | 84   | 41  | 719                               | 720                      | 49                     | 0.00                          | 18.09                | 12.02                      | 12.24                    |
| <b>Sacramento Valley</b>  |                                      |                                    |      |     |                                   |                          |                        |                               |                      |                            |                          |
| Redding                   | 71                                   | 1                                  | 89   | 53  | 1,302                             | 946                      | 74                     | 0.00                          | 31.31                | 32.03                      | 33.70                    |
| Red Bluff                 | 70                                   | 0                                  | 89   | 51  | 1,146                             | 967                      | 67                     | 0.00                          | 21.74                | 22.33                      | 23.25                    |
| Orland                    | 73                                   | 4                                  | 89   | 57  | 1,238                             | 964                      | 64                     | 0.00                          | 21.85                | 20.64                      | 21.52                    |
| Oroville                  | 70                                   | 0                                  | 88   | 54  | 1,310                             | 1,040                    | 61                     | 0.00                          | 21.09                | 25.14                      | 25.84                    |
| Marysville                | 69                                   | 0                                  | 88   | 51  | 1,244                             | 949                      | 63                     | 0.00                          | 18.62                | 19.65                      | 20.21                    |
| Sacramento                | 69                                   | 1                                  | 90   | 51  | 1,285                             | 883                      | 64                     | 0.00                          | 16.50                | 17.65                      | 18.10                    |
| <b>San Joaquin Valley</b> |                                      |                                    |      |     |                                   |                          |                        |                               |                      |                            |                          |
| Stockton                  | 67                                   | -2                                 | 88   | 47  | 1,189                             | 1,089                    | 58                     | 0.00                          | 14.36                | 13.27                      | 13.53                    |
| Modesto                   | 67                                   | -2                                 | 86   | 49  | 1,089                             | 1,104                    | 61                     | 0.00                          | 17.53                | 12.04                      | 12.34                    |
| Merced                    | 68                                   | -1                                 | 89   | 47  | 1,201                             | 972                      | 55                     | 0.00                          | 15.21                | 11.64                      | 11.87                    |
| Madera                    | 68                                   | -2                                 | 90   | 49  | 1,209                             | 1,074                    | 54                     | 0.00                          | 9.98                 | 10.59                      | 10.86                    |
| Fresno                    | 71                                   | -1                                 | 90   | 54  | 1,479                             | 1,228                    | 49                     | 0.00                          | 10.00                | 10.67                      | 11.05                    |
| Lemoore                   | NA                                   | NA                                 | NA   | NA  | NA                                | 1,075                    | NA                     | NA                            | NA                   | 7.10                       | 7.23                     |
| Visalia                   | 71                                   | 1                                  | 88   | 55  | 1,406                             | 1,060                    | 46                     | 0.00                          | 10.12                | 10.13                      | 10.37                    |
| Bakersfield               | 71                                   | -2                                 | 92   | 52  | 1,471                             | 1,374                    | 42                     | 0.00                          | 6.83                 | 6.27                       | 6.40                     |
| <b>Cascade Sierra</b>     |                                      |                                    |      |     |                                   |                          |                        |                               |                      |                            |                          |
| Alturas                   | 50                                   | -4                                 | 73   | 27  | 87                                | 65                       | 75                     | 0.00                          | 10.00                | 9.90                       | 11.72                    |
| Mount Shasta              | 56                                   | -1                                 | 77   | 37  | 271                               | 126                      | 83                     | 0.00                          | 39.87                | 35.42                      | 37.86                    |
| Blue Canyon               | 55                                   | 0                                  | 67   | 44  | 281                               | 77                       | 86                     | 0.00                          | 58.89                | 60.27                      | 62.80                    |
| Yosemite Valley           | 50                                   | -9                                 | 62   | 38  | 166                               | 227                      | 78                     | 0.00                          | 35.09                | 38.55                      | 40.65                    |
| <b>South Coast</b>        |                                      |                                    |      |     |                                   |                          |                        |                               |                      |                            |                          |
| Santa Maria               | 57                                   | -3                                 | 68   | 47  | 765                               | 867                      | 53                     | 0.04                          | 17.20                | 13.22                      | 13.42                    |
| Santa Barbara             | 57                                   | -4                                 | 68   | 46  | 1,038                             | 946                      | 43                     | 0.00                          | 25.17                | 17.12                      | 17.38                    |
| Oxnard                    | 60                                   | -2                                 | 66   | 52  | 1,083                             | 1,216                    | 41                     | 0.00                          | 21.69                | 12.85                      | 13.05                    |
| Riverside                 | 64                                   | -5                                 | 77   | 53  | 1,297                             | 1,552                    | 39                     | 0.00                          | 12.46                | 9.17                       | 9.48                     |
| Los Angeles               | 61                                   | -3                                 | 67   | 55  | 1,249                             | 1,492                    | 40                     | 0.00                          | 19.61                | 12.07                      | 12.33                    |
| San Diego                 | 63                                   | -2                                 | 68   | 57  | 1,451                             | 1,690                    | 45                     | 0.03                          | 12.43                | 9.59                       | 9.87                     |
| <b>Southeast Interior</b> |                                      |                                    |      |     |                                   |                          |                        |                               |                      |                            |                          |
| Bishop                    | 64                                   | -2                                 | 87   | 40  | 615                               | 535                      | 18                     | 0.00                          | 4.46                 | 4.35                       | 4.87                     |
| Daggett                   | NA                                   | NA                                 | NA   | NA  | NA                                | 1,495                    | NA                     | NA                            | NA                   | 3.11                       | 3.80                     |
| Lancaster                 | 66                                   | -4                                 | 85   | 51  | 858                               | 857                      | 33                     | 0.00                          | 8.02                 | 6.53                       | 6.86                     |
| Thermal                   | 80                                   | -1                                 | 98   | 63  | 2,317                             | 2,305                    | 13                     | 0.00                          | 2.25                 | 2.40                       | 2.98                     |
| Blythe                    | 80                                   | -2                                 | 98   | 59  | 2,339                             | 2,435                    | 15                     | 0.00                          | 2.78                 | 2.58                       | 3.58                     |
| Imperial                  | 79                                   | -1                                 | 97   | 59  | 2,332                             | 2,352                    | 4                      | 0.00                          | 0.33                 | 1.94                       | 2.39                     |

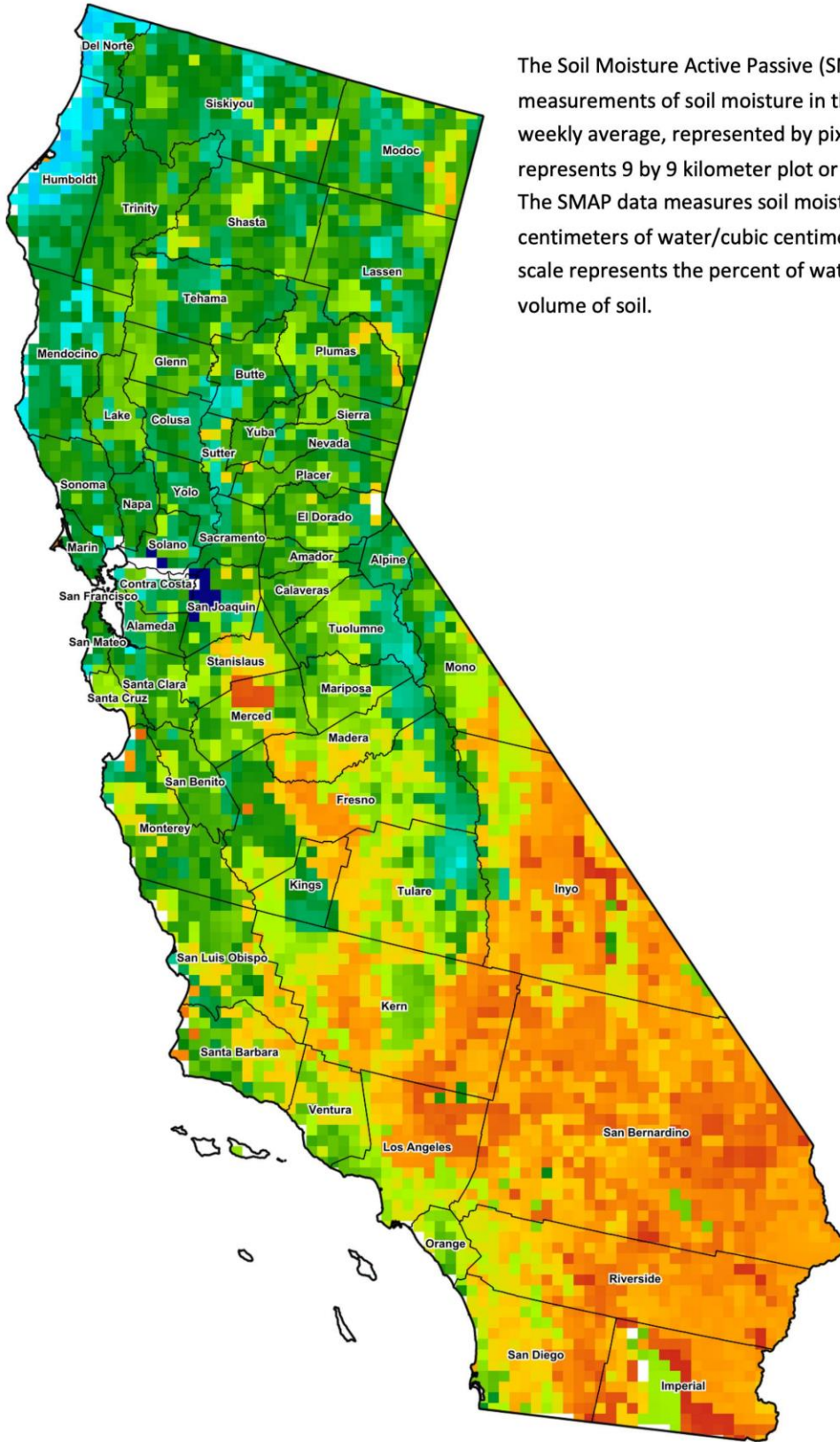
<sup>1</sup> Total number of days with precipitation events this season.  
<sup>2</sup> Rain or melted snow/ice.  
<sup>3</sup> Normal periods 1990-2020 used in departure from normal calculations.

Data retrieved from NOAA and NWS. Calculated by USDA NASS.  
 All rights reserved.

**Reservoir Data from the California Department of Water Resources**

| Reservoir             | Capacity  | May 27, 2024     |                     |                    | This Date Last Year |                     |
|-----------------------|-----------|------------------|---------------------|--------------------|---------------------|---------------------|
|                       |           | Storage          | Percent of Capacity | Percent of Average | Storage             | Percent of Capacity |
|                       |           | <i>Acre Feet</i> | <i>Percent</i>      | <i>Percent</i>     | <i>Acre Feet</i>    | <i>Percent</i>      |
| Shasta Lake           | 4,547,300 | 4,322,392        | 95                  | 113                | 4,460,043           | 98                  |
| Lake Oroville         | 3,537,400 | 3,518,011        | 99                  | 125                | 3,419,370           | 97                  |
| Trinity Lake          | 2,443,800 | 2,120,081        | 87                  | 110                | 1,223,412           | 50                  |
| New Melones Reservoir | 2,413,000 | 2,098,475        | 87                  | 140                | 1,785,213           | 74                  |
| San Luis Reservoir    | 2,057,200 | 1,245,624        | 61                  | 86                 | 2,001,971           | 98                  |
| Don Pedro Reservoir   | 2,030,000 | 1,896,191        | 93                  | 117                | 1,552,889           | 76                  |

Source: [cdec.water.ca.gov/reportapp/javareports?name=DLYHYDRO](https://cdec.water.ca.gov/reportapp/javareports?name=DLYHYDRO)



The Soil Moisture Active Passive (SMAP) provides measurements of soil moisture in the root zone as a weekly average, represented by pixels. Each pixel represents 9 by 9 kilometer plot or about 20,000 acres. The SMAP data measures soil moisture in cubic centimeters of water/cubic centimeters of soil. The scale represents the percent of water in a given volume of soil.



**Drought Conditions from the U.S. Drought Monitor as of 5/21/2024**

| Time         | Percent of Land in Drought Rating |       |      |      |      |      | Drought Severity (DSCI) |
|--------------|-----------------------------------|-------|------|------|------|------|-------------------------|
|              | None                              | D0    | D1   | D2   | D3   | D4   |                         |
| Current      | 98.77                             | 1.23  | 0.00 | 0.00 | 0.00 | 0.00 | 1                       |
| Last Week    | 98.77                             | 1.23  | 0.00 | 0.00 | 0.00 | 0.00 | 1                       |
| 3 Months Ago | 92.97                             | 7.03  | 0.00 | 0.00 | 0.00 | 0.00 | 7                       |
| One Year Ago | 70.86                             | 29.14 | 4.63 | 0.00 | 0.00 | 0.00 | 34                      |

The U.S. Drought Monitor is jointly produced by the National Drought Mitigation Center at the University of Nebraska-Lincoln, the United States Department of Agriculture, and the National Oceanic and Atmospheric Administration. [droughtmonitor.unl.edu/CurrentMap/StateDroughtMonitor.aspx?CA](http://droughtmonitor.unl.edu/CurrentMap/StateDroughtMonitor.aspx?CA)