



# California Crop Progress & Condition

Cooperating with the California Department of Food and Agriculture  
Pacific Region • 650 Capitol Mall, Suite 6-100 • Sacramento, CA 95814 • (916) 738-6600 • (855) 270-2722 FAX •  
[www.nass.usda.gov/ca](http://www.nass.usda.gov/ca)

**WEEK ENDING: November 26, 2023**  
**RELEASED: November 27, 2023**

**FREQUENCY: Weekly**  
**VOL. 44 NO. 35**

## WEATHER

No data was available at the time of publication.

## FIELD CROPS

Across the state, growers finished preparing fields for winter crop plantings. In the Sacramento Valley, **winter wheat** planting neared completion. **Rice** harvest was complete. In the San Joaquin Valley, **cotton** harvest continued. In Tulare County, **dry bean** harvest finished and cotton harvest continued. Harvested cotton fields were mowed, disced, and fertilized. **Corn** for silage harvest was winding down. Winter forage planting began.

## FRUIT CROPS

Table and wine **grape** harvests were wrapping up for some varieties. Late variety grape vineyards were covered with plastic to protect the grapes from precipitation. **Pluot** and **prune** harvests were mostly completed. **Figs, apples, plums, pomegranates, persimmons,** and **kiwifruit** harvests continued. **Pear** harvest was completed. **Cherry** and **apricot** orchards were pruned and treated for nematodes. **Olives** for oil harvest continued. **Strawberry** harvest continued with reports of quality issues in some areas. **Blueberries** and **blackberries** were dormant. **Raspberry** harvest continued but with low volumes. New citrus plantings gained size. Navel **orange** and **grapefruit** harvests were ongoing. District 3 **lemon** harvest ramped up while District 1 harvest was off to a slow start.

## NUT CROPS

**Pecan** harvest was ongoing. **Walnut, almond, and pistachio** harvests finished, and the trees moved into dormancy. Walnut and almond orchards were treated for nematodes. Almond orchards were pruned.

## VEGETABLE CROPS

In the Northern San Joaquin Valley, **onions** and **garlic** were harvested. In the Southern San Joaquin Valley, garlic, **carrots,** and onions were harvested. Along the Central Coast, broccoli harvest was winding down. **Cauliflower, brussel sprouts,** and **lettuce** harvests were ongoing. **Eggplant,** lettuce, and **celery** harvests continued in the Coachella Valley.

## LIVESTOCK

Foothill rangeland and non-irrigated pasture were in fair condition. Irrigated pasture was in good condition. Movement of cattle down from higher elevation range continued. Fall lambing season was underway. Cool temperatures stimulated milk production. Sheep grazed retired cropland, harvested vegetable fields, and alfalfa fields. Bees continued to be moved into the state for overwintering.

**CALIFORNIA CROP WEATHER – WEEK ENDING NOVEMBER 26, 2023 <sup>1</sup>**

STATIONS	TEMPERATURE				GROWING DEGREE DAYS <sup>2</sup> AT 50 °F BASE <sup>3</sup>		RAIN DAYS <sup>4</sup>	PRECIPITATION <sup>5</sup>			
	Average for Week Ending Nov 26, 2023	Departure from Normal <sup>6</sup>	High	Low	This Year	Normal Year <sup>6</sup>	This Season	This Week	This Season	Normal Season <sup>6</sup>	Normal Year <sup>6</sup>
					Jan 1 - Nov 26, 2023	Jan 1 - Nov 26, 2023	Oct 1 - Nov 26, 2023	Week Ending Nov 26, 2023	Oct 1 - Nov 26, 2023	Oct 1 - Nov 26	Oct 1 - Sept 30
	-- Degrees Fahrenheit --				-- Number --		-- Days --	-- Inches of Precipitation --			
<b>North Coast</b>											
Eureka WFO	NA	NA	NA	NA	NA	1,309	NA	NA	NA	6.31	40.61
Ukiah	NA	NA	NA	NA	NA	3,936	NA	NA	NA	4.67	35.07
Santa Rosa	NA	NA	NA	NA	NA	3,282	NA	NA	NA	4.59	34.00
Napa State Hospital	NA	NA	NA	NA	NA	3,133	NA	NA	NA	2.56	20.36
<b>Central Coast</b>											
San Francisco	NA	NA	NA	NA	NA	3,301	NA	NA	NA	2.42	19.77
San Jose	NA	NA	NA	NA	NA	4,047	NA	NA	NA	1.62	13.58
Salinas	NA	NA	NA	NA	NA	3,087	NA	NA	NA	1.63	12.66
Monterey	NA	NA	NA	NA	NA	2,757	NA	NA	NA	2.05	16.36
Paso Robles	NA	NA	NA	NA	NA	3,974	NA	NA	NA	1.27	12.24
<b>Sacramento Valley</b>											
Redding	NA	NA	NA	NA	NA	5,263	NA	NA	NA	4.79	33.70
Red Bluff	NA	NA	NA	NA	NA	5,205	NA	NA	NA	3.15	23.25
Orland	NA	NA	NA	NA	NA	4,915	NA	NA	NA	2.59	21.52
Oroville	NA	NA	NA	NA	NA	5,128	NA	NA	NA	3.86	25.84
Marysville	NA	NA	NA	NA	NA	4,778	NA	NA	NA	2.87	20.21
Sacramento	NA	NA	NA	NA	NA	4,494	NA	NA	NA	2.30	18.10
<b>San Joaquin Valley</b>											
Stockton	NA	NA	NA	NA	NA	5,051	NA	NA	NA	1.84	13.53
Modesto	NA	NA	NA	NA	NA	5,103	NA	NA	NA	1.42	12.34
Merced	NA	NA	NA	NA	NA	4,900	NA	NA	NA	1.50	11.87
Madera	NA	NA	NA	NA	NA	5,178	NA	NA	NA	1.20	10.86
Fresno	NA	NA	NA	NA	NA	5,775	NA	NA	NA	1.29	11.05
Lemoore	NA	NA	NA	NA	NA	5,150	NA	NA	NA	0.86	7.23
Visalia	NA	NA	NA	NA	NA	5,150	NA	NA	NA	1.39	10.37
Bakersfield	NA	NA	NA	NA	NA	6,128	NA	NA	NA	0.70	6.40
<b>Cascade Sierra</b>											
Alturas	NA	NA	NA	NA	NA	1,783	NA	NA	NA	1.91	11.72
Mount Shasta	NA	NA	NA	NA	NA	2,099	NA	NA	NA	5.01	37.86
Blue Canyon	NA	NA	NA	NA	NA	2,416	NA	NA	NA	9.55	62.80
Yosemite Valley	NA	NA	NA	NA	NA	2,970	NA	NA	NA	5.86	40.65
<b>South Coast</b>											
Santa Maria	NA	NA	NA	NA	NA	3,237	NA	NA	NA	1.47	13.42
Santa Barbara	NA	NA	NA	NA	NA	3,465	NA	NA	NA	1.80	17.38
Oxnard	NA	NA	NA	NA	NA	4,029	NA	NA	NA	1.05	13.05
Riverside	NA	NA	NA	NA	NA	5,906	NA	NA	NA	0.79	9.48
Los Angeles	NA	NA	NA	NA	NA	4,849	NA	NA	NA	1.15	12.33
San Diego	NA	NA	NA	NA	NA	5,247	NA	NA	NA	1.14	9.87
<b>Southeast Interior</b>											
Bishop	NA	NA	NA	NA	NA	3,846	NA	NA	NA	0.61	4.87
Daggett	NA	NA	NA	NA	NA	6,847	NA	NA	NA	0.50	3.80
Lancaster	NA	NA	NA	NA	NA	4,996	NA	NA	NA	0.63	6.86
Thermal	NA	NA	NA	NA	NA	8,264	NA	NA	NA	0.33	2.98
Blythe	NA	NA	NA	NA	NA	8,926	NA	NA	NA	0.33	3.58
Imperial	NA	NA	NA	NA	NA	8,646	NA	NA	NA	0.33	2.39

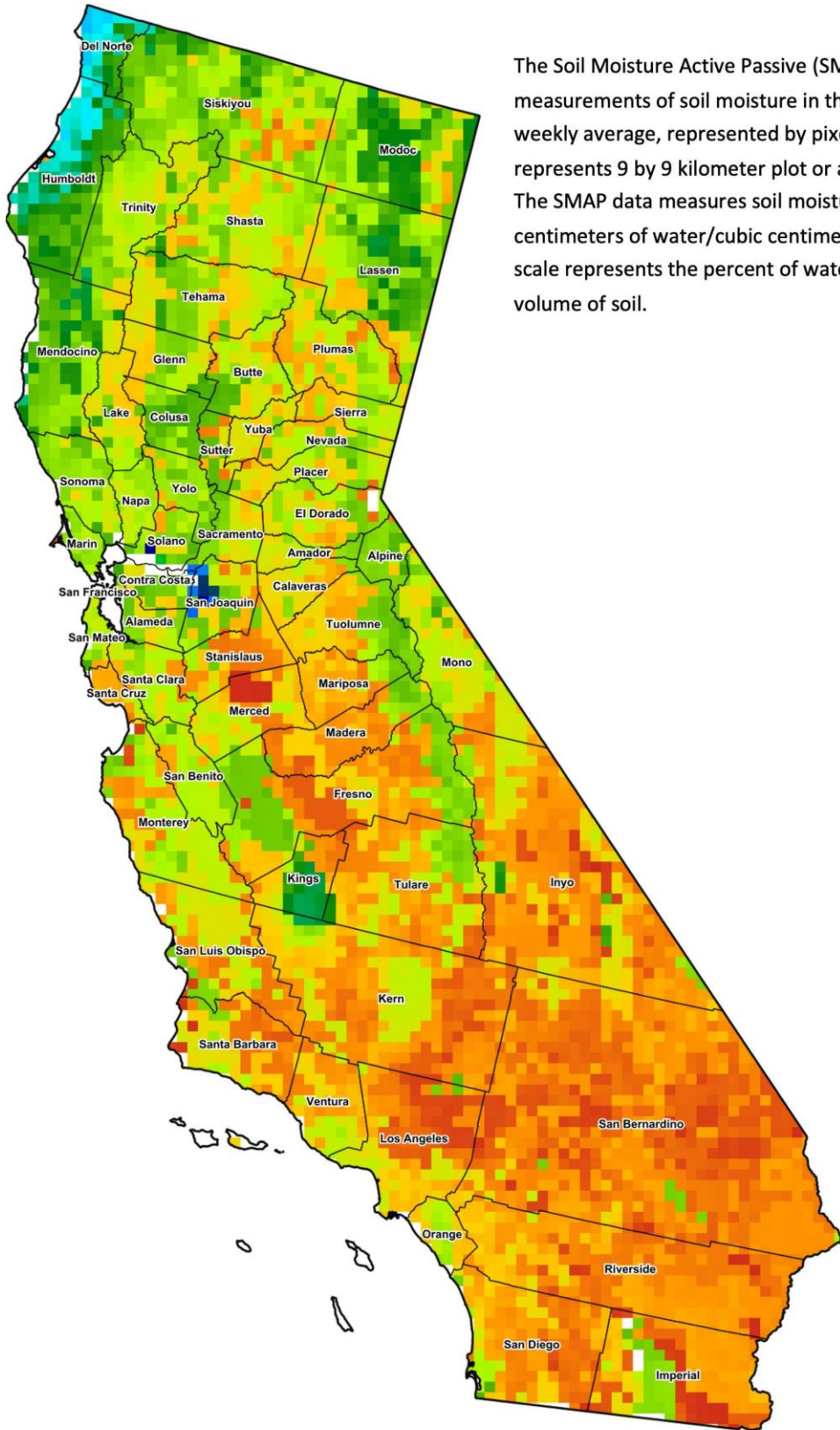
<sup>1</sup> No data was available at the time of publication.  
<sup>2</sup> Previously labeled as growing degree hours. The column title was corrected in the Sept 27, 2021 report.  
<sup>3</sup> Previously calculated with 60 degree base. This calculation was changed for the 2022 and later seasons.  
<sup>4</sup> Total number of days with precipitation events this season.  
<sup>5</sup> Rain or melted snow/ice.  
<sup>6</sup> Normal periods 1990-2020 used in departure from normal calculations.

Data retrieved from NOAA and NWS. Calculated by USDA NASS.  
 All rights reserved.

**Reservoir Data from the California Department of Water Resources**

Reservoir	Capacity	November 26, 2023			This Date Last Year	
		Storage	Percent of Capacity	Percent of Average	Storage	Percent of Capacity
	<i>Acre Feet</i>	<i>Acre Feet</i>	<i>Percent</i>	<i>Percent</i>	<i>Acre Feet</i>	<i>Percent</i>
Shasta Lake	4,547,300	3,084,884	68	126	1,404,676	31
Lake Oroville	3,537,400	2,335,147	66	132	976,226	28
Trinity Lake	2,443,800	1,210,475	49	86	528,935	22
New Melones Reservoir	2,413,000	1,929,954	80	149	586,447	24
San Luis Reservoir	2,057,200	1,172,036	57	113	515,372	25
Don Pedro Reservoir	4,547,300	1,634,683	81	122	1,009,587	50

Source: [cdec.water.ca.gov/reportapp/javareports?name=DLYHYDRO](http://cdec.water.ca.gov/reportapp/javareports?name=DLYHYDRO)



The Soil Moisture Active Passive (SMAP) provides measurements of soil moisture in the root zone as a weekly average, represented by pixels. Each pixel represents 9 by 9 kilometer plot or about 20,000 acres. The SMAP data measures soil moisture in cubic centimeters of water/cubic centimeters of soil. The scale represents the percent of water in a given volume of soil.



**Drought Conditions from the U.S. Drought Monitor as of 11/21/2023**

Time	Percent of Land in Drought Rating						Drought Severity (DSCI)
	None	D0	D1	D2	D3	D4	
Current	95.32	4.68	0.00	0.00	0.00	0.00	5
Last Week	95.32	4.68	0.00	0.00	0.00	0.00	5
3 Months Ago	93.33	5.30	1.38	0.00	0.00	0.00	8
One Year Ago	0.00	0.52	14.51	44.05	28.19	12.73	338

The U.S. Drought Monitor is jointly produced by the National Drought Mitigation Center at the University of Nebraska-Lincoln, the United States Department of Agriculture, and the National Oceanic and Atmospheric Administration. [droughtmonitor.unl.edu/CurrentMap/StateDroughtMonitor.aspx?CA](https://droughtmonitor.unl.edu/CurrentMap/StateDroughtMonitor.aspx?CA)