



California Crop Progress & Condition

Cooperating with the California Department of Food and Agriculture
Pacific Region • 650 Capitol Mall, Suite 6-100 • Sacramento, CA 95814 • (916) 738-6600 • (855) 270-2722 FAX •
www.nass.usda.gov/ca

WEEK ENDING: October 15, 2023
RELEASED: October 16, 2023

FREQUENCY: Weekly
VOL. 44 NO. 29

WEATHER

Average low temperatures for California ranged from 27 to 54 in the mountains, 33 to 75 in the desert, 36 to 65 along the coast, and 43 to 62 in the Central Valley. Average high temperatures for the state ranged from 51 to 87 in the mountains, 60 to 96 along the coast, 64 to 95 in the Central Valley, and 66 to 102 in the desert.

FIELD CROPS

Across the state, **corn** continued to mature and was chopped for silage. **Alfalfa** was harvested for hay and silage. Harvested fields were fertilized and disced in preparation for winter crops. In the Sacramento Valley, **rice**, **dry bean**, and **sunflower** harvests continued. In the Northern San Joaquin Valley, **sudan grass** was harvested and winter **oats** emerged. In the Southern San Joaquin Valley, **cotton** bolls continued to open and defoliation activities ramped up. Some producers began harvesting. Dry bean fields were cut and windrowed. Corn silage and alfalfa harvests neared completion.

FRUIT CROPS

Table and wine **grape** harvests continued. Some table grapes were put away for the storage season which is expected to be shorter due to the impacts of Hurricane Hillary. **Peach**, **pluot**, **prune** and **plum** harvests were winding down. Processing peach orchards were sprayed for weeds. **Figs**, **apples**, **pears**, **pomegranates**, and **kiwifruit** were harvested. **Persimmons** were reaching mature size and starting to show color. **Cherry** and **apricot** orchards were pruned and treated for nematodes. Table **olive** harvest continued. Olive trees for oil were pruned in preparation for harvest. **Strawberry**, **blackberry**, and **raspberry** harvests were ongoing. New citrus plantings continued to develop. Valencia **oranges** and **grapefruit** were harvested. District 2 **lemon** harvest neared completion, and District 3 lemon harvest began.

NUT CROPS

Almond, **pistachio**, and **walnut** harvests continued. **Pecans** continued to mature. Nematodes were treated in walnuts. Almond and walnut orchards were sprayed for pests and weeds.

VEGETABLE CROPS

Across the Central Valley, **pumpkins**, **tomatoes**, **sweet corn**, **melons**, **bell peppers**, and **winter squash** continued to be harvested. Growers treated tomato fields with fungicides to control mold and pesticides to control armyworm. In the Northern San Joaquin Valley, **sweet potatoes**, **onions**, **eggplant**, and **garlic** were harvested. **Cantaloupe** and **honeydew** harvest concluded. In the Southern San Joaquin Valley, **garlic**, **carrots**, **okra**, **onions**, **cucumbers**, **melons**, and **peppers** were harvested. Along the Central Coast, **squash**, **broccoli**, **cauliflower**, **brussel sprouts**, **celery**, **lettuce**, **kale**, and **peppers** were harvested.

LIVESTOCK

Foothill rangeland and non-irrigated pasture were in poor to fair condition. Irrigated pasture was in good condition. Supplemental feeding for cattle continued in the San Joaquin and Sacramento Valleys. Some cattle grazed on high elevation range. Fall calving was ongoing. Sheep grazed retired cropland and harvested vegetable fields. Some bees were moved into the state for overwintering.

CALIFORNIA CROP WEATHER – WEEK ENDING OCTOBER 15, 2023

STATIONS	TEMPERATURE				GROWING DEGREE DAYS ¹ AT 50 °F BASE ²		RAIN DAYS ³	PRECIPITATION ⁴			
	Average for Week Ending Oct 15, 2023	Departure from Normal ⁵	High	Low	This Year	Normal Year ⁵	This Season	This Week	This Season	Normal Season ⁵	Normal Year ⁵
					Jan 1 - Oct 15, 2023	Jan 1 - Oct 15, 2023	Oct 1 - Oct 15, 2023	Week Ending Oct 15, 2023	Oct 1 - Oct 15, 2023	Oct 1 - Oct 15	Oct 1 - Sept 30
	-- Degrees Fahrenheit --				-- Number --		-- Days --	-- Inches of Precipitation --			
North Coast											
Eureka WFO	56	1	66	43	1,357	1,212	5	1.01	1.04	0.84	40.61
Ukiah	61	-2	82	41	3,821	3,684	2	0.14	0.14	0.60	35.07
Santa Rosa	61	-1	81	40	3,062	3,025	2	0.07	0.07	0.50	34.00
Napa State Hospital	64	2	81	42	2,995	2,885	0	0.00	0.00	0.30	20.36
Central Coast											
San Francisco	66	2	77	55	2,972	2,917	0	0.00	0.00	0.25	19.77
San Jose	69	4	83	52	3,618	3,659	0	0.00	0.00	0.18	13.58
Salinas	63	1	79	45	2,863	2,726	2	0.06	0.07	0.20	12.66
Monterey	61	0	73	47	2,064	2,434	0	0.00	0.00	0.30	16.36
Paso Robles	63	0	88	36	3,620	3,706	0	0.00	0.00	0.17	12.24
Sacramento Valley											
Redding	64	-2	84	47	5,139	4,964	1	0.21	0.21	0.66	33.70
Red Bluff	65	-2	83	47	5,012	4,889	0	0.00	0.00	0.34	23.25
Orland	66	-1	91	49	4,785	4,580	2	0.01	0.23	0.29	21.52
Oroville	68	1	85	53	4,901	4,792	1	0.03	0.03	0.43	25.84
Marysville	66	0	85	47	4,514	4,484	1	0.03	0.03	0.27	20.21
Sacramento	66	1	85	49	4,561	4,214	1	0.01	0.01	0.26	18.10
San Joaquin Valley											
Stockton	66	-1	84	48	4,429	4,685	0	0.00	0.00	0.22	13.53
Modesto	66	-1	82	47	4,363	4,748	0	0.00	0.00	0.17	12.34
Merced Macready	67	1	87	47	4,583	4,587	1	0.00	0.01	0.20	11.87
Madera	66	0	88	43	4,689	4,836	0	0.00	0.00	0.13	10.86
Fresno	69	1	88	51	5,422	5,382	0	0.00	0.00	0.17	11.05
Lemoore	67	1	87	46	4,907	4,835	0	0.00	0.00	0.13	7.23
Visalia	68	1	95	50	5,066	4,815	2	0.00	0.08	0.17	10.37
Bakersfield	70	1	92	52	5,533	5,694	1	0.00	0.15	0.07	6.40
Cascade Sierra											
Alturas	50	1	75	27	1,975	1,783	4	0.26	0.29	0.35	11.72
Mount Shasta	52	0	72	32	2,604	2,096	2	0.23	0.23	0.68	37.86
Blue Canyon	53	-4	69	38	2,407	2,359	2	0.94	0.94	1.24	62.80
Yosemite Valley	52	-6	65	39	1,928	2,912	1	0.00	0.01	0.94	40.65
South Coast											
Santa Maria	62	-1	82	46	2,416	2,837	0	0.00	0.00	0.16	13.42
Santa Barbara	65	2	84	50	3,234	3,077	0	0.00	0.00	0.23	17.38
Oxnard	64	-1	74	52	3,068	3,521	0	0.00	0.00	0.17	13.05
Riverside	71	1	96	53	4,788	5,312	1	0.01	0.01	0.12	9.48
Los Angeles	67	-1	78	59	3,700	4,237	0	0.00	0.00	0.16	12.33
San Diego	68	-1	78	58	4,024	4,611	1	0.01	0.01	0.17	9.87
Southeast Interior											
Bishop	57	-2	83	33	3,567	3,759	1	0.00	0.18	0.17	4.87
Daggett	70	0	96	49	6,089	6,397	0	0.00	0.00	0.11	3.80
Lancaster	63	-1	91	39	4,605	4,760	0	0.00	0.00	0.12	6.86
Thermal	77	2	101	53	7,484	7,583	0	0.00	0.00	0.09	2.98
Blythe	78	1	100	58	7,926	8,188	0	0.00	0.00	0.08	3.58
Imperial	78	1	102	57	7,577	7,901	0	0.00	0.00	0.12	2.39

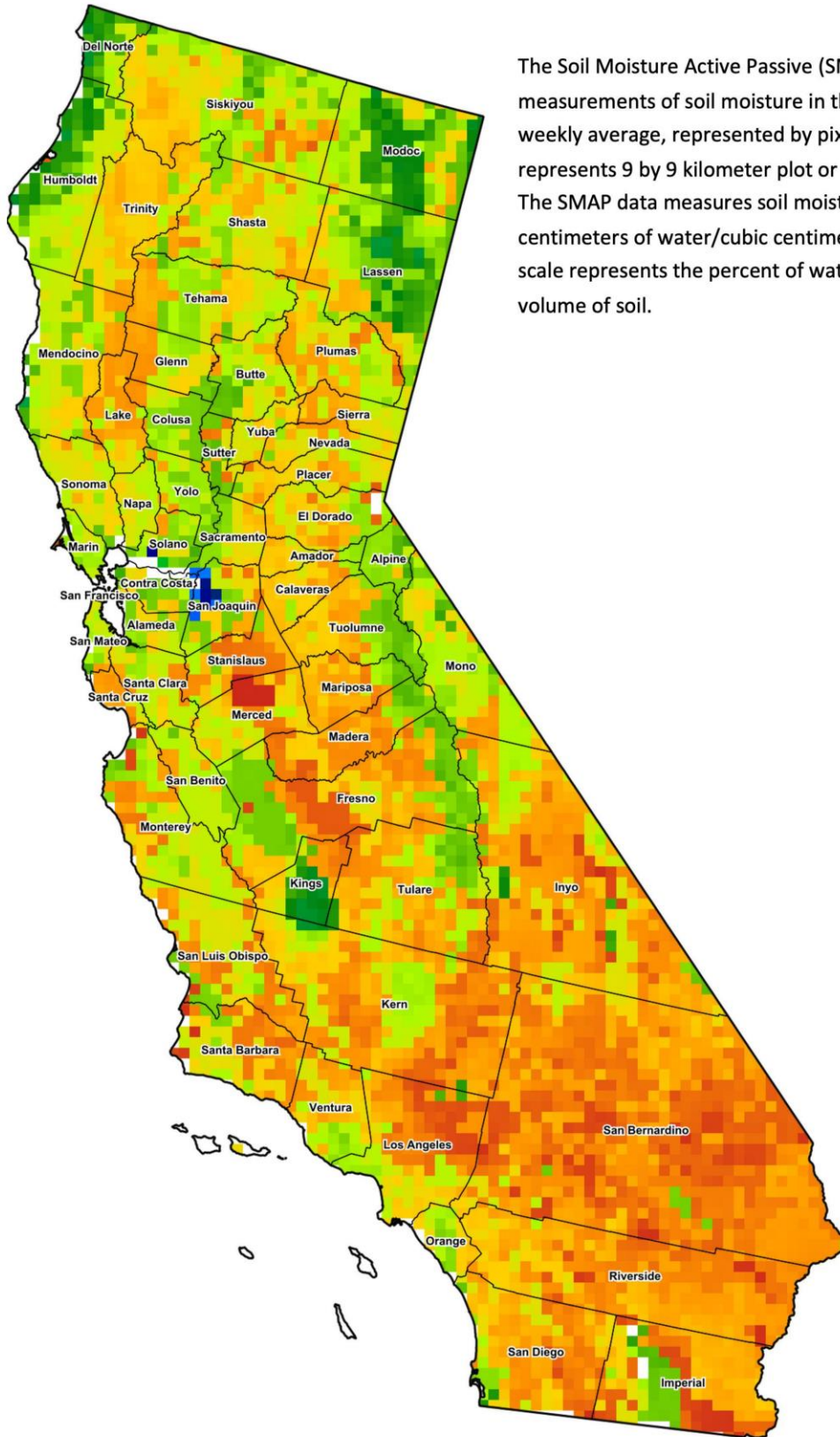
¹ Previously labeled as growing degree hours. The column title was corrected in the Sept 27, 2021 report.
² Previously calculated with 60 degree base. This calculation was changed for the 2022 and later seasons.
³ Total number of days with precipitation events this season.
⁴ Rain or melted snow/ice.
⁵ Normal periods 1990-2020 used in departure from normal calculations.

Data retrieved from NOAA and NWS. Calculated by USDA NASS.
 All rights reserved.

Reservoir Data from the California Department of Water Resources

Reservoir	Capacity	October 15, 2023			This Date Last Year	
		Storage	Percent of Capacity	Percent of Average	Storage	Percent of Capacity
		<i>Acre Feet</i>	<i>Percent</i>	<i>Percent</i>	<i>Acre Feet</i>	<i>Percent</i>
Shasta Lake	4,547,300	3,242,751	71	130	1,461,923	32
Lake Oroville	3,537,400	2,495,558	71	134	1,178,163	33
Trinity Lake	2,443,800	1,248,123	51	86	542,155	22
New Melones Reservoir	2,413,000	1,891,848	79	144	605,760	25
San Luis Reservoir	2,057,200	1,563,902	77	176	539,458	26
Don Pedro Reservoir	4,547,300	1,680,181	83	123	1,024,248	50

Source: cdec.water.ca.gov/reportapp/javareports?name=DLYHYDRO



The Soil Moisture Active Passive (SMAP) provides measurements of soil moisture in the root zone as a weekly average, represented by pixels. Each pixel represents 9 by 9 kilometer plot or about 20,000 acres. The SMAP data measures soil moisture in cubic centimeters of water/cubic centimeters of soil. The scale represents the percent of water in a given volume of soil.



Drought Conditions from the U.S. Drought Monitor as of 10/10/2023

Time	Percent of Land in Drought Rating						Drought Severity (DSCI)
	None	D0	D1	D2	D3	D4	
Current	93.98	5.95	0.07	0.00	0.00	0.00	6
Last Week	94.01	5.93	0.07	0.00	0.00	0.00	6
3 Months Ago	71.95	21.76	6.29	0.00	0.00	0.00	34
One Year Ago	0.00	0.23	5.77	53.09	24.34	16.57	351

The U.S. Drought Monitor is jointly produced by the National Drought Mitigation Center at the University of Nebraska-Lincoln, the United States Department of Agriculture, and the National Oceanic and Atmospheric Administration. droughtmonitor.unl.edu/CurrentMap/StateDroughtMonitor.aspx?CA