



# California Crop Progress & Condition

Cooperating with the California Department of Food and Agriculture  
Pacific Region • 650 Capitol Mall, Suite 6-100 • Sacramento, CA 95814 • (916) 738-6600 • (855) 270-2722 FAX •  
[www.nass.usda.gov/ca](http://www.nass.usda.gov/ca)

**WEEK ENDING: June 25, 2023**  
**RELEASED: June 26, 2023**

**FREQUENCY: Weekly**  
**VOL. 44 NO. 13**

## WEATHER

Average low temperatures for California ranged from 30 to 51 in the mountains, 40 to 75 in the desert, 41 to 62 along the coast, and 46 to 63 in the Central Valley. Average high temperatures for the state ranged from 47 to 81 in the mountains, 57 to 86 along the coast, 74 to 94 in the Central Valley, and 76 to 106 in the desert. From the California Department of Water Resources, snowpack water content in the Northern Sierra was 4.10 inches, 5.30 in Central Sierra, and 4.70 in Southern Sierra.

## FIELD CROPS

In the Sacramento Valley, winter **wheat** harvest continued. **Rice** was progressing at a slower than normal pace due to cooler temperatures. In Sutter County, winter wheat harvest began. Rice herbicide and fertilizer treatments continued. In Stanislaus County, **corn** continued to be planted, while some fields were emerged and growing well. **Alfalfa** was harvested for silage and dried for hay. Silage corn and **sudan grass** were sprayed for weeds. In the San Joaquin Valley, treatments for lygus were applied to **cotton** fields. Cotton crop progress was slowed due to cooler temperatures. In Tulare County, winter forage harvest was nearly complete. Harvested silage fields were being tilled and furrowed. Corn and **sorghum** fields were fertilized, tilled, and planted. Dryland wheat was harvested. Cotton fields continued to develop and were cultivated and treated for weeds. Alfalfa was cut, raked, and baled.

## FRUIT CROPS

**Grape** vineyards were thinned to allow for sunlight exposure. Stone fruit harvest was in full swing as **plums, nectarines, apricots, and peaches** were picked and packed. **Cherry** harvest was nearing completion. Citrus groves were treated for pests and weeds, and some trees were topped. Valencia **orange** harvest continued. **Lemons, grapefruit, and mandarins** continued to be picked and packed. Seedless **tangerines** remained netted to prevent pollination. **Kiwi** vineyards were leafing out, tied, and irrigated. **Pomegranates, apples, and olives** continued to develop. **Blueberries** and **strawberries** continued to be picked.

## NUT CROPS

Cool temperatures throughout the week slowed the **almond** maturing process. Almond meat fill was complete in most areas. Ant bait traps were placed in orchards. **Pistachios, walnuts, and pecans** continued to mature. There was an increase in alternaria and rust in some almond orchards. Pistachio nut clusters continued to grow.

## VEGETABLE CROPS

Processing **tomatoes** progressed in the Sacramento Valley. Crop progress was about two weeks behind schedule. Cherry tomatoes continued to grow in the Capay Valley. In Tulare County, summer crops continued to be planted, and benefitted from cooler weather. **Zucchini, sweet corn, eggplant, okra, onions, broccoli, cabbage, and peppers** continued to grow. Tomato plants were treated for pests. Stanislaus County **sweet potatoes** and tomatoes continued to grow well. Bell pepper harvest neared completion in the Coachella Valley. Broccoli, **celery, lettuce, mushrooms, and cauliflower** were harvested in the Salinas Valley. **Carrot** harvest began in Kern County.

## LIVESTOCK

Successive weeks of mild temperatures and elevated humidity delayed the seasonal drying of rangeland grasses and forbs in some locations. Foothill rangeland and non-irrigated pasture were reported to be in good to excellent condition. Bees were active in melon fields. Cattle grazed on lower elevation range and some were moved upslope as conditions permitted. Sheep grazed on fallow fields and retired farmland.

**CALIFORNIA CROP WEATHER – WEEK ENDING JUNE 25, 2023**

STATIONS	TEMPERATURE				GROWING DEGREE DAYS <sup>1</sup> AT 50 °F BASE <sup>2</sup>		RAIN DAYS <sup>3</sup>	PRECIPITATION <sup>4</sup>			
	Average for Week Ending June 25, 2023	Departure from Normal <sup>5</sup>	High	Low	This Year	Normal Year <sup>5</sup>	This Season	This Week	This Season	Normal Season <sup>5</sup>	Normal Year <sup>5</sup>
					Jan 1 - Jun 25, 2023	Jan 1 - Jun 25, 2023	Oct 1 - Jun 25, 2023	Week Ending Jun 25, 2023	Oct 1 - Jun 25, 2023	Oct 1 - Jun 25	Oct 1 - Sept 30
	-- Degrees Fahrenheit --				-- Number --		-- Days --	-- Inches of Precipitation --			
<b>North Coast</b>											
Eureka WFO	54	-2	60	46	334	328	115	0.11	39.48	39.30	40.61
Ukiah	64	-6	83	45	1,185	1,190	83	0.00	38.73	34.57	35.07
Santa Rosa	62	-5	80	44	959	1,090	77	0.00	42.45	33.55	34.00
Napa State Hospital	62	-4	76	42	986	1,041	71	0.00	29.54	20.11	20.36
<b>Central Coast</b>											
San Francisco	61	-2	69	53	1,099	1,225	73	0.00	31.40	19.52	19.77
San Jose	63	-5	74	49	1,229	1,478	66	0.00	15.32	13.35	13.58
Salinas	NA	NA	NA	NA	NA	1,163	NA	NA	NA	12.49	12.66
Monterey	58	-3	65	48	659	1,045	64	0.00	23.80	16.12	16.36
Paso Robles	63	-7	86	41	1,103	1,278	64	0.00	20.92	12.00	12.24
<b>Sacramento Valley</b>											
Redding	70	-9	89	50	1,726	1,726	77	0.00	39.29	32.81	33.70
Red Bluff	68	-10	88	48	1,683	1,729	73	0.02	27.06	22.79	23.25
Orland	NA	NA	NA	NA	NA	1,674	NA	NA	NA	21.02	21.52
Oroville	69	-8	86	50	1,698	1,774	71	0.00	26.72	25.41	25.84
Marysville	68	-8	86	47	1,519	1,645	58	0.00	22.76	19.89	20.21
Sacramento	68	-6	87	50	1,566	1,537	63	0.00	24.66	17.79	18.10
<b>San Joaquin Valley</b>											
Stockton	67	-8	86	48	1,467	1,786	60	0.00	23.23	13.35	13.53
Modesto	66	-10	83	48	1,426	1,815	65	0.00	20.18	12.19	12.34
Merced Macready	68	-8	85	50	1,528	1,674	53	0.00	19.38	11.75	11.87
Madera	68	-9	86	46	1,605	1,798	51	0.00	11.11	10.75	10.86
Fresno	70	-9	86	55	1,919	2,028	47	0.00	16.35	10.90	11.05
Lemoore	69	-8	87	49	1,706	1,806	38	0.00	7.84	7.14	7.23
Visalia	71	-6	94	54	1,806	1,790	54	0.00	15.60	10.25	10.37
Bakersfield	71	-9	85	53	1,952	2,203	51	0.00	9.37	6.31	6.40
<b>Cascade Sierra</b>											
Alturas	53	-9	76	30	479	344	94	1.93	15.55	10.72	11.72
Mount Shasta	57	-6	81	35	724	454	99	0.06	44.31	36.52	37.86
Blue Canyon	53	-11	64	39	528	406	98	0.00	90.27	61.57	62.80
Yosemite Valley	NA	NA	NA	NA	NA	669	NA	NA	NA	39.38	40.65
<b>South Coast</b>											
Santa Maria	59	-3	71	44	800	1,205	56	0.00	23.83	13.20	13.42
Santa Barbara	62	-1	76	50	1,247	1,312	51	0.00	28.66	17.14	17.38
Oxnard	63	-1	71	54	1,140	1,617	53	0.00	22.14	12.82	13.05
Riverside	69	-5	85	54	1,637	2,216	51	0.00	13.35	9.13	9.48
Los Angeles	64	-3	72	57	1,507	1,973	56	0.00	23.85	12.07	12.33
San Diego	66	-2	73	59	1,683	2,192	57	0.00	13.88	9.58	9.87
<b>Southeast Interior</b>											
Bishop	66	-8	88	40	1,053	1,182	38	0.00	14.40	4.46	4.87
Daggett	77	-9	94	59	2,176	2,468	20	0.00	2.71	3.11	3.80
Lancaster	69	-9	87	50	1,438	1,620	30	0.00	7.04	6.53	6.86
Thermal	84	-4	103	64	2,955	3,355	15	0.00	1.35	2.39	2.98
Blythe	NA	NA	NA	NA	NA	3,571	NA	NA	NA	2.58	3.58
Imperial	84	-5	103	63	3,035	3,417	11	0.00	0.84	1.94	2.39

<sup>1</sup> Previously labeled as growing degree hours. The column title was corrected in the Sept 27, 2021 report.

<sup>2</sup> Previously calculated with 60 degree base. This calculation was changed for the 2022 and later seasons.

<sup>3</sup> Total number of days with precipitation events this season.

<sup>4</sup> Rain or melted snow/ice.

<sup>5</sup> Normal periods 1990-2020 used in departure from normal calculations.

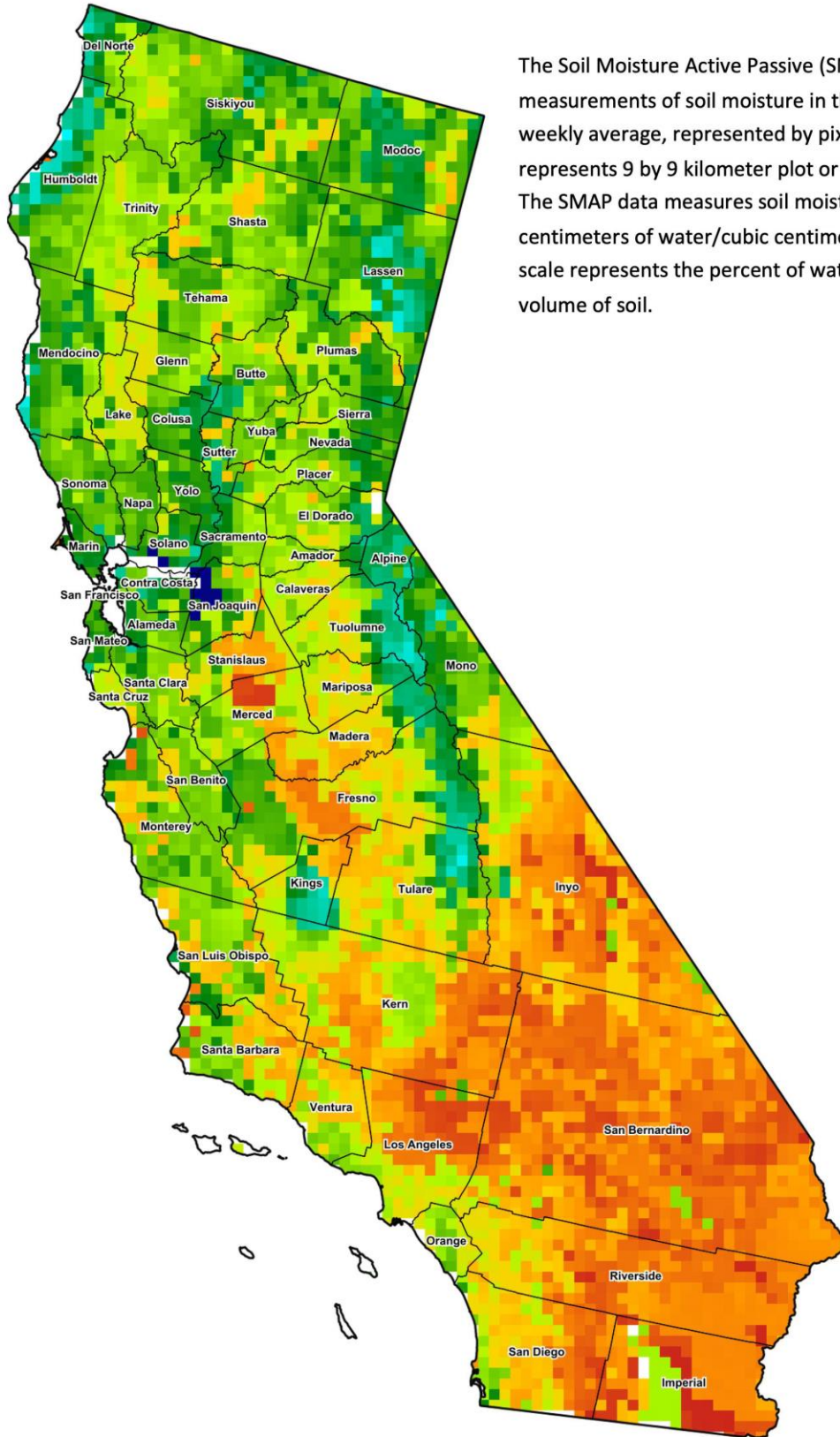
Data retrieved from NOAA and NWS. Calculated by USDA NASS.

All rights reserved.

**Reservoir Data from the California Department of Water Resources**

Reservoir	Capacity	June 25, 2023			This Date Last Year	
		Storage	Percent of Capacity	Percent of Average	Storage	Percent of Capacity
	<i>Acre Feet</i>	<i>Acre Feet</i>	<i>Percent</i>	<i>Percent</i>	<i>Acre Feet</i>	<i>Percent</i>
Shasta Lake	4,547,300	4,327,605	95	121	1,789,195	39
Lake Oroville	3,537,400	3,523,209	100	130	1,762,900	50
Trinity Lake	2,443,800	1,419,577	58	75	721,084	29
New Melones Reservoir	2,413,000	2,020,658	84	134	796,330	33
San Luis Reservoir	2,057,200	2,019,328	99	175	815,346	40
Don Pedro Reservoir	4,547,300	1,730,037	85	104	1,326,144	65

Source: [cdec.water.ca.gov/reportapp/javareports?name=DLYHYDRO](https://cdec.water.ca.gov/reportapp/javareports?name=DLYHYDRO)



**Drought Conditions from the U.S. Drought Monitor**

Time	Percent of Land in Drought Rating						Drought Severity (DSCI)
	None	D0	D1	D2	D3	D4	
Current	72.32	23.05	4.63	0.00	0.00	0.00	32
Last Week	72.32	23.05	4.63	0.00	0.00	0.00	32
3 Months Ago	48.51	15.61	27.93	8.49	0.00	0.00	96
One Year Ago	0.00	0.21	2.31	37.67	48.22	11.59	369

The U.S. Drought Monitor is jointly produced by the National Drought Mitigation Center at the University of Nebraska-Lincoln, the United States Department of Agriculture, and the National Oceanic and Atmospheric Administration. [droughtmonitor.unl.edu/CurrentMap/StateDroughtMonitor.aspx?CA](http://droughtmonitor.unl.edu/CurrentMap/StateDroughtMonitor.aspx?CA)