



California Crop Progress & Condition

Cooperating with the California Department of Food and Agriculture
Pacific Region • 650 Capitol Mall, Suite 6-100 • Sacramento, CA 95814 • (916) 738-6600 • (855) 270-2722 FAX •
www.nass.usda.gov/ca

WEEK ENDING: June 4, 2023
RELEASED: June 5, 2023

FREQUENCY: Weekly
VOL. 44 NO. 10

WEATHER

Average low temperatures for California ranged from 31 to 59 in the mountains, 42 to 62 along the coast, 45 to 71 in the desert, and 51 to 68 in the Central Valley. Average high temperatures for the state ranged from 47 to 89 in the mountains, 57 to 95 along the coast, 71 to 103 in the desert, and 74 to 100 in the Central Valley. From the California Department of Water Resources, snowpack water content in the Northern Sierra was 14.40 inches compared to .80 inches this date last year; Central Sierra was 19.50 inches compared to 0.00 inches this date last year; Southern Sierra was 17.70 inches compared to 0.00 inches this date last year.

FIELD CROPS

In the northern mountains, the first cutting of **alfalfa** was baled. In Sutter County, seeding of **rice** fields was finishing up. In the Sacramento Valley, winter **wheat** crops were drying down with warmer daytime temperatures. The rice crop was emerging slowly due to cooler temperatures and herbicide applications were made. In Stanislaus County, **corn** was emerging. Alfalfa was harvested for silage and dried for hay. Silage corn, rice, and **sudan grass** were sprayed for weeds. Wheat and **oat** silage harvest finished. In the San Joaquin Valley, snow melt continued to impact low-lying **cotton** fields. Flood warnings remained active. In Tulare County, harvested winter grain fields were fertilized, tilled, and planted with summer silage crops such as corn and **sorghum**. Cotton and corn silage fields showed rapid growth and were treated for weeds. Alfalfa fields were cut, raked, and baled.

FRUIT CROPS

Grape buds continued to open and leaf out and some bloom clusters were present. Grape vineyards were sprayed for weeds and vineyards were thinned. Stone fruits including **peaches**, **plums** and **nectarines** continued to develop. **Apricots**, **cherries**, and early peach varieties were harvested. Peaches for processing were treated for phytophthora and nematodes. Valencia **orange** harvest continued while the Navel orange harvest was wrapping up. **Lemons**, **grapefruit**, and **mandarins** continued to be picked and packed. Seedless varieties of mandarins and tangerines remained netted to prevent pollination. **Kiwi** vineyards were leafing out, being tied, and irrigated. Apiaries remained in some kiwi vineyards for pollination. **Dates** continued to ripen. **Olives** were treated for nematodes. **Blueberries** and **strawberries** continued to be picked.

NUT CROPS

Navel orangeworm presence was noted in many orchards. Orchards began preparing for ants by placing bait traps. **Pistachios**, **walnuts**, and **pecans** continued to mature. More walnut orchards were removed. Some pistachio growers started small plant bug treatments to protect nutlets from damage. **Almond** meat fill was complete in many areas.

VEGETABLE CROPS

Asparagus harvest was nearing completion, and cherry **tomatoes** progressed in the Sacramento Valley. In Tulare County, **sweet corn**, **eggplant**, **okra**, **onions**, **broccoli**, **cabbage**, **peppers**, and **garlic** continued to grow. In Stanislaus County onions were harvested. **Watermelon**, **honeydew**, and **cantaloupe** were planted and weeded, and bees were placed in fields for pollination. Transplanting of **sweet potatoes** and tomatoes continued, and greenhouse tomatoes were harvested. **Bell peppers**, **carrots**, and **eggplant** were harvested in the Imperial Valley. In the Salinas Valley, broccoli, **cauliflower**, and **celery** were harvested and quality was noted to be above average.

LIVESTOCK

Rangeland grasses and forbs were starting to dry out in some locations. Foothill rangeland and non-irrigated pasture were reported to be in good to excellent condition. Bees were active in kiwi vineyards and melon fields. Cattle grazed on lower elevation range. Sheep grazed on fallow fields and retired farmland.

CALIFORNIA CROP WEATHER – WEEK ENDING JUNE 4, 2023

STATIONS	TEMPERATURE				GROWING DEGREE DAYS ¹ AT 50 °F BASE ²		RAIN DAYS ³	PRECIPITATION ⁴			
	Average for Week Ending June 4, 2023	Departure from Normal ⁵	High	Low	This Year	Normal Year ⁵	This Season	This Week	This Season	Normal Season ⁵	Normal Year ⁵
					Jan 1 - Jun 4, 2023	Jan 1 - Jun 4, 2023	Oct 1 - Jun 4, 2023	Week Ending Jun 4, 2023	Oct 1 - Jun 4, 2023	Oct 1 - Jun 4	Oct 1 - Sept 30
	-- Degrees Fahrenheit --				-- Number --		-- Days --	-- Inches of Precipitation --			
North Coast											
Eureka WFO	54	-1	60	46	218	192	111	0.00	39.34	38.80	40.61
Ukiah	68	2	95	49	806	787	83	0.00	38.74	34.34	35.07
Santa Rosa	61	-3	83	44	696	745	75	0.00	42.42	33.34	34.00
Napa State Hospital	62	-1	76	50	704	715	69	0.00	29.52	19.96	20.36
Central Coast											
San Francisco	61	0	70	53	823	951	72	0.00	31.39	19.42	19.77
San Jose	64	-1	79	52	917	1,104	65	0.00	15.23	13.22	13.58
Salinas	NA	NA	NA	NA	NA	909	NA	NA	NA	12.44	12.66
Monterey	56	-3	64	48	470	824	63	0.01	23.65	16.04	16.36
Paso Robles	63	-3	90	42	795	868	63	0.00	20.91	11.97	12.24
Sacramento Valley											
Redding	77	4	100	60	1,174	1,150	75	0.00	39.15	32.28	33.70
Red Bluff	75	3	99	59	1,154	1,168	70	0.00	27.01	22.48	23.25
Orland	NA	NA	NA	NA	NA	1,152	NA	NA	NA	20.76	21.52
Oroville	NA	NA	NA	NA	NA	1,233	NA	NA	NA	25.19	25.84
Marysville	71	0	94	54	1,060	1,133	56	0.00	22.68	19.70	20.21
Sacramento	70	0	94	54	1,129	1,058	63	0.00	24.66	17.65	18.10
San Joaquin Valley											
Stockton	69	-2	96	51	1,046	1,275	60	0.00	23.23	13.29	13.53
Modesto	70	-1	92	52	1,010	1,293	65	0.00	20.18	12.09	12.34
Merced Macready	70	-1	94	51	1,077	1,159	53	0.00	19.38	11.67	11.87
Madera	71	-1	97	52	1,145	1,265	51	0.00	11.11	10.64	10.86
Fresno	74	0	96	57	1,407	1,440	47	0.00	16.35	10.73	11.05
Lemoore	NA	NA	NA	NA	NA	1,272	NA	NA	NA	7.11	7.23
Visalia	72	0	95	57	1,307	1,254	54	0.00	15.60	10.15	10.37
Bakersfield	73	-2	95	58	1,443	1,593	49	0.00	9.00	6.28	6.40
Cascade Sierra											
Alturas	59	3	82	39	280	124	85	0.68	12.70	10.22	11.72
Mount Shasta	64	6	89	44	432	203	94	0.06	44.16	35.73	37.86
Blue Canyon	60	2	77	49	362	147	92	0.01	89.20	60.82	62.80
Yosemite Valley	NA	NA	NA	NA	NA	332	NA	NA	NA	38.87	40.65
South Coast											
Santa Maria	59	-1	69	50	580	957	54	0.00	23.47	13.17	13.42
Santa Barbara	62	1	69	52	961	1,044	48	0.00	28.44	17.07	17.38
Oxnard	62	0	67	54	856	1,323	52	0.00	22.08	12.78	13.05
Riverside	65	-5	82	54	1,264	1,727	50	0.00	13.33	9.10	9.48
Los Angeles	63	-2	68	58	1,203	1,619	55	0.00	23.83	12.02	12.33
San Diego	63	-3	68	57	1,349	1,824	56	0.00	13.85	9.54	9.87
Southeast Interior											
Bishop	68	0	90	45	691	702	32	0.00	13.67	4.37	4.87
Daggett	76	-3	98	56	1,588	1,753	19	0.00	2.70	3.09	3.80
Lancaster	67	-5	93	51	1,011	1,058	30	0.00	7.04	6.50	6.86
Thermal	80	-3	102	63	2,245	2,590	15	0.00	1.35	2.38	2.98
Blythe	82	-3	103	63	2,466	2,740	17	0.00	1.95	2.57	3.58
Imperial	79	-4	101	62	2,353	2,635	11	0.00	0.84	1.94	2.39

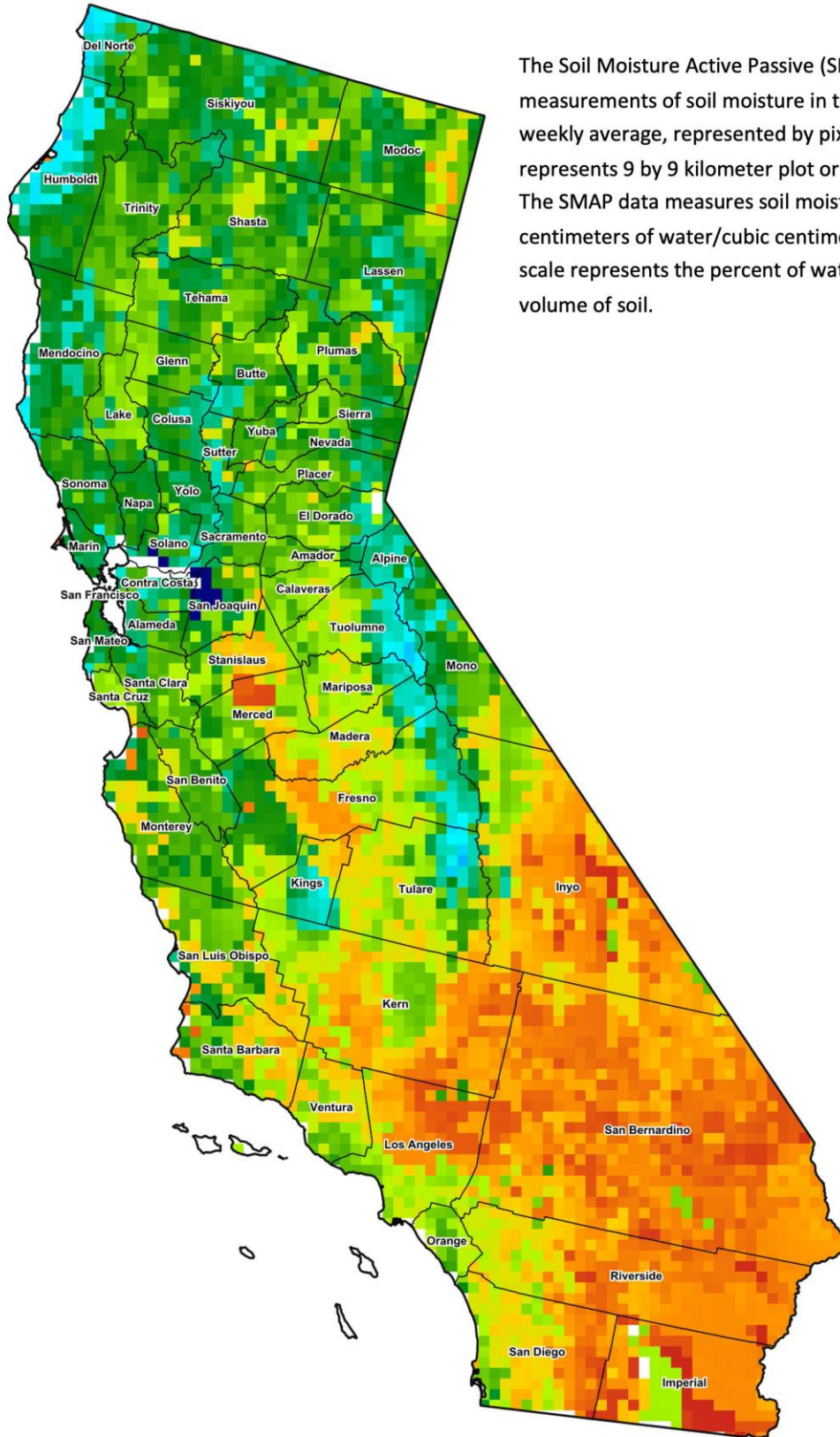
¹ Previously labeled as growing degree hours. The column title was corrected in the Sept 27, 2021 report.
² Previously calculated with 60 degree base. This calculation was changed for the 2022 and later seasons.
³ Total number of days with precipitation events this season.
⁴ Rain or melted snow/ice.
⁵ Normal periods 1990-2020 used in departure from normal calculations.

Data retrieved from NOAA and NWS. Calculated by USDA NASS.
 All rights reserved.

Reservoir Data from the California Department of Water Resources

Reservoir	Capacity	June 5, 2023			This Date Last Year	
		Storage	Percent of Capacity	Percent of Average	Storage	Percent of Capacity
		<i>Acre Feet</i>	<i>Percent</i>	<i>Percent</i>	<i>Acre Feet</i>	<i>Percent</i>
Shasta Lake	4,547,300	4,446,255	98	118	1,816,097	40
Lake Oroville	3,537,400	3,505,905	99	125	1,895,802	54
Trinity Lake	2,443,800	1,305,516	53	68	736,537	30
New Melones Reservoir	2,413,000	1,870,202	78	125	850,295	35
San Luis Reservoir	2,057,200	2,024,152	99	148	903,021	44
Don Pedro Reservoir	4,547,300	1,598,772	79	98	1,357,285	67

Source: cdec.water.ca.gov/reportapp/javareports?name=DLYHYDRO



Drought Conditions from the U.S. Drought Monitor

Time	Percent of Land in Drought Rating						Drought Severity (DSCI)
	None	D0	D1	D2	D3	D4	
Current	70.88	24.49	4.63	0.00	0.00	0.00	34
Last Week	70.86	24.51	4.63	0.00	0.00	0.00	34
3 Months Ago	16.71	34.17	24.17	24.96	0.00	0.00	157
One Year Ago	0.00	0.14	2.30	37.75	48.22	11.59	369

The U.S. Drought Monitor is jointly produced by the National Drought Mitigation Center at the University of Nebraska-Lincoln, the United States Department of Agriculture, and the National Oceanic and Atmospheric Administration. droughtmonitor.unl.edu/CurrentMap/StateDroughtMonitor.aspx?CA