



# California Crop Progress & Condition

Cooperating with the California Department of Food and Agriculture  
Pacific Region • P.O. Box 1258 • Sacramento, CA 95812 • (916) 738-6600 • (855) 270-2722 FAX • [www.nass.usda.gov/ca](http://www.nass.usda.gov/ca)

**WEEK ENDING: October 9, 2022**  
**RELEASED: October 11, 2022**

**FREQUENCY: Weekly**  
**VOL. 43 NO. 28**

## WEATHER

Average lows for California ranged from 31 to 67 in the mountains, 41 to 76 in the desert, 45 to 68 along the coast, and 52 to 69 in the Central Valley. Average highs for the state ranged from 53 to 97 along the coast, 69 to 97 in the mountains, 84 to 99 in the Central Valley, and 87 to 101 in the desert.

## FIELD CROPS

In the Sacramento Valley, **rice**, **sunflower** and **corn** harvests continued. Groundwork continued in preparation for fall and winter plantings. In Stanislaus County, **dry beans**, corn silage, **alfalfa** hay, and alfalfa silage harvests continued. In the San Joaquin Valley, **cotton** defoliation activities advanced as harvesting and ginning began. American Pima bolls continued cracking open. In Tulare County, cotton fields were being defoliated and harvest is expected to ramp up in the coming weeks. Corn and **sorghum** silage harvests were winding down. Harvested fields were being fertilized and tilled in preparation for planting winter grain crops. Alfalfa and **Sudan** grass continued to be irrigated, cut, dried, and baled.

## FRUIT CROPS

Older stone fruit orchards were pushed out and shredded. Harvest continued in **peach**, **prune**, **nectarine**, **pomegranate**, **lemon**, and **plum** orchards. Wine **grape** harvest began to wrap up and table grape harvest continued. Raisin grapes that had completed the drying process were rolled and picked up. Plastic sheeting was kept over some raisin grapes to protect from potential rainfall. **Persimmon**, **kiwifruit**, and **quince** maturation was ongoing. Irrigation continued in citrus groves to prevent fruit drop because of heat stress. **Pummelo** harvest began. Navel **oranges** and **tangerines** continued to develop and have begun to show color. Valencia orange harvest continued. **Olive** harvest was ongoing.

## NUT CROPS

Spraying for weeds continued where necessary. **Walnut**, and **pistachio** harvests were well underway. **Almond** harvest slowed as older orchards were pushed to make room for new plantings.

## VEGETABLE CROPS

Cherry **tomato** harvest in the Sacramento Valley neared completion, while **squash** and **corn** harvests resumed. Fall groundwork continued. Processing tomato harvest continued. In Stanislaus County, tomato and **sweet potato** harvests continued. **Zucchini**, **squash**, **green beans**, **eggplant** and **pepper** harvests continued in Tulare County. **Sweet corn**, **pumpkins**, and **tomatillos** continued to develop. Cooler temperatures helped with vegetable growth.

## LIVESTOCK

The condition of rangeland and non-irrigated pasture remained primarily poor south of the Sacramento Valley. Some North State range was beginning to show some green after mid-September rain. Irrigated range remained in good condition. Supplemental feeding of cattle continued.

**NOTICE:** USDA NASS has changed the base temperature used to calculate growing degree days (found in the table below) from 60 °F to 50 °F.

CALIFORNIA CROP WEATHER – WEEK ENDING OCTOBER 9, 2022											
STATIONS	TEMPERATURE				GROWING DEGREE DAYS AT 50 °F BASE <sup>1</sup>		RAIN DAYS <sup>2</sup>	PRECIPITATION <sup>3</sup>			
	Average for Week Ending Oct 9, 2022	Departure from Normal <sup>4</sup>	High	Low	This Year	Normal Year <sup>4</sup>	This Season	This Week	This Season	Normal Season <sup>4</sup>	Normal Year <sup>4</sup>
					Jan 1 - Oct 9, 2022	Jan 1 - Oct 9, 2022	Oct 1 - Oct 9, 2022	Week Ending Oct 9, 2022	Oct 1 - Oct 9, 2022	Oct 1 - Oct 9	Oct 1 - Sept 30
-- Degrees Fahrenheit --				-- Number --		-- Days --	-- Inches of Precipitation --				
<b>North Coast</b>											
Eureka WFO	55	0	63	47	1,376	1,182	2	0.02	0.02	0.44	40.61
Ukiah	71	6	96	48	4,012	3,603	0	0.00	0.00	0.29	35.07
Santa Rosa	64	0	88	45	3,316	2,949	0	0.00	0.00	0.22	34.00
Napa State Hospital	64	1	81	49	3,108	2,812	0	0.00	0.00	0.15	20.36
<b>Central Coast</b>											
San Francisco	62	-2	73	53	3,087	2,833	0	0.00	0.00	0.12	19.77
San Jose	67	1	82	54	3,991	3,565	0	0.00	0.00	0.10	13.58
Salinas	NA	NA	NA	NA	NA	2,650	NA	NA	NA	0.10	12.66
Monterey	58	-3	68	51	2,765	2,367	0	0.00	0.00	0.16	16.36
Paso Robles	71	6	97	46	4,408	3,625	0	0.00	0.00	0.09	12.24
<b>Sacramento Valley</b>											
Redding	76	7	99	56	5,576	4,863	0	0.00	0.00	0.33	33.70
Red Bluff	76	7	97	56	5,505	4,786	0	0.00	0.00	0.18	23.25
Orland	NA	NA	NA	NA	NA	4,479	NA	NA	NA	0.15	21.52
Oroville	75	6	92	57	5,459	4,691	0	0.00	0.00	0.22	25.84
Marysville	74	6	96	52	4,983	4,387	0	0.00	0.00	0.13	20.21
Sacramento	75	8	97	54	4,970	4,123	0	0.00	0.00	0.14	18.10
<b>San Joaquin Valley</b>											
Stockton	74	5	96	54	4,987	4,582	0	0.00	0.00	0.11	13.53
Modesto	74	5	93	55	4,968	4,646	0	0.00	0.00	0.08	12.34
Merced Macready	75	7	96	54	5,187	4,491	0	0.00	0.00	0.10	11.87
Madera	74	6	95	54	5,050	4,736	0	0.00	0.00	0.07	10.86
Fresno	78	8	94	61	6,110	5,271	0	0.00	0.00	0.08	11.05
Lemoore	76	7	97	56	5,478	4,734	0	0.00	0.00	0.07	7.23
Visalia	75	6	93	58	5,393	4,714	0	0.00	0.00	0.09	10.37
Bakersfield	78	6	94	57	6,164	5,576	0	0.00	0.00	0.03	6.40
<b>Cascade Sierra</b>											
Alturas	57	6	84	31	2,045	1,783	0	0.00	0.00	0.20	11.72
Mount Shasta	66	11	87	43	2,669	2,079	0	0.00	0.00	0.35	37.86
Blue Canyon	69	10	78	59	2,844	2,316	0	0.00	0.00	0.63	62.80
Yosemite Valley	NA	NA	NA	NA	NA	2,864	NA	NA	NA	0.52	40.65
<b>South Coast</b>											
Santa Maria	61	-2	75	50	2,796	2,759	0	0.00	0.00	0.08	13.42
Santa Barbara	65	2	76	54	3,438	2,999	0	0.00	0.00	0.12	17.38
Oxnard	65	0	73	58	3,499	3,429	0	0.00	0.00	0.09	13.05
Riverside	76	5	91	61	5,991	5,190	0	0.00	0.00	0.06	9.48
Los Angeles	70	2	77	63	4,657	4,129	0	0.00	0.00	0.09	12.33
San Diego	70	1	76	65	4,390	4,497	0	0.00	0.00	0.09	9.87
<b>Southeast Interior</b>											
Bishop	65	4	89	41	4,176	3,704	0	0.00	0.00	0.10	4.87
Daggett	80	7	97	64	6,939	6,273	0	0.00	0.00	0.06	3.80
Lancaster	74	7	96	52	5,481	4,671	0	0.00	0.00	0.07	6.86
Thermal	84	6	100	67	7,875	7,428	2	0.02	0.02	0.06	2.98
Blythe	84	4	101	69	8,451	8,025	1	0.05	0.05	0.06	3.58
Imperial	85	6	100	70	8,126	7,740	0	0.00	0.00	0.07	2.39

<sup>1</sup> Previously labeled as growing degree hours. The column title was corrected in the Sept 27, 2021 report. Additionally, degree days were previously calculated using a base of 60 degrees. The base temperature was changed to 50 degrees in the April 4, 2022 report.

<sup>2</sup> Total number of days with precipitation events this season.

<sup>3</sup> Rain or melted snow/ice.

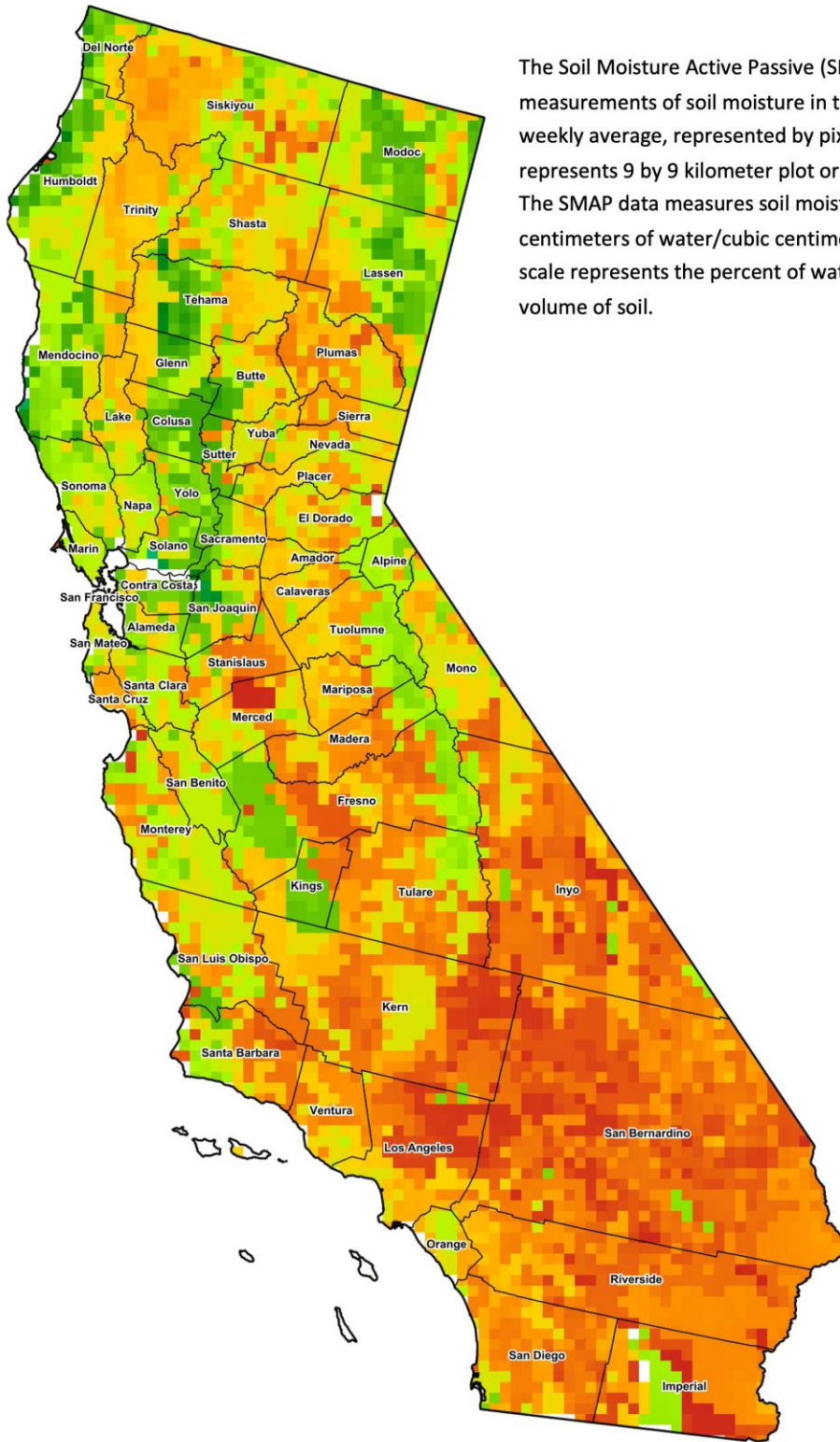
<sup>4</sup> Normal periods 1990-2020 used in departure from normal calculations.

Data retrieved from NOAA and NWS. Calculated by USDA NASS.  
All rights reserved.

### Reservoir Data from the California Department of Water Resources

Reservoir	Capacity	October 9, 2022			This Date Last Year	
		Storage	Percent of Capacity	Percent of Average	Storage	Percent of Capacity
		<i>Acre Feet</i>	<i>Percent</i>	<i>Percent</i>	<i>Acre Feet</i>	<i>Percent</i>
Shasta Lake	4,547,300	1,483,623	33	59	1,030,604	23
Lake Oroville	3,537,400	1,202,140	34	64	793,231	22
Trinity Lake	2,443,800	546,535	22	37	675,489	28
New Melones Reservoir	2,413,000	614,052	26	46	837,351	35
San Luis Reservoir	2,057,200	560,032	27	63	224,250	11
Don Pedro Reservoir	4,547,300	1,040,627	51	76	997,357	49

Source: [cdec.water.ca.gov/reportapp/javareports?name=DLYHYDRO](http://cdec.water.ca.gov/reportapp/javareports?name=DLYHYDRO)



The Soil Moisture Active Passive (SMAP) provides measurements of soil moisture in the root zone as a weekly average, represented by pixels. Each pixel represents 9 by 9 kilometer plot or about 20,000 acres. The SMAP data measures soil moisture in cubic centimeters of water/cubic centimeters of soil. The scale represents the percent of water in a given volume of soil.

**Percent Soil Moisture**

- 0%
- 5%
- 10%
- 15%
- 20%
- 25%
- 30%
- 35%
- 40%
- 45%
- 50%
- 55%
- 60%
- >65%

**Drought Conditions from the U.S. Drought Monitor**

Time	Percent of Land in Drought Rating						Drought Severity (DSCI)
	None	D0	D1	D2	D3	D4	
Current	0.00	0.23	5.75	53.12	24.34	16.57	351
Last Week	0.00	0.24	5.75	53.11	24.34	16.57	351
3 Months Ago	0.00	0.20	2.31	37.67	48.22	11.59	369
One Year Ago	0.00	0.00	6.07	6.05	42.22	45.66	427

The U.S. Drought Monitor is jointly produced by the National Drought Mitigation Center at the University of Nebraska-Lincoln, the United States Department of Agriculture, and the National Oceanic and Atmospheric Administration. [droughtmonitor.unl.edu/CurrentMap/StateDroughtMonitor.aspx?CA](https://droughtmonitor.unl.edu/CurrentMap/StateDroughtMonitor.aspx?CA)