



# California Crop Progress & Condition

Cooperating with the California Department of Food and Agriculture  
Pacific Region • P.O. Box 1258 • Sacramento, CA 95812 • (916) 738-6600 • (855) 270-2722 FAX • [www.nass.usda.gov/ca](http://www.nass.usda.gov/ca)

**WEEK ENDING: August 28, 2022**  
**RELEASED: August 29, 2022**

**FREQUENCY: Weekly**  
**VOL. 43 NO. 22**

## WEATHER

Average temperature lows for California ranged from 40 to 68 in the mountains, 50 to 71 along the coast, 56 to 88 in the desert, and 57 to 79 in the Central Valley. Average temperature highs for the state ranged from 63 to 103 along the coast, 79 to 94 in the mountains, 89 to 108 in the valley, and 93 to 109 in the desert.

## FIELD CROPS

In the Northern Mountains, some growers were working on a third cutting of **alfalfa**. In the Sacramento Valley, the **sunflower** crop was drying down and the **rice** crop continued to mature. In Stanislaus County, **corn** and alfalfa hay harvest for silage continued. Harvested corn fields were disced. **Sudan** fields were sprayed for weeds and insects. In the San Joaquin Valley, **cotton** development continued with the hot and dry conditions. Across the Central Valley, growers continued to cut and bale alfalfa hay. In Tulare County, corn was found in various stages of development. Silage fields that had been harvested were being fertilized and prepped for winter crops. **Dry bean** fields were being treated for weed and insect pests.

## FRUIT CROPS

**Peach, prune, nectarine, and plum** harvests remained steady. **Cherries** were pruned. Table **grape** harvest continued. **Persimmons, kiwifruits, Asian pears, grapefruits, and lemons** continued to develop. Valencia **orange** harvest was ongoing. **Mandarin** blocks were thinned of excess fruit. Old citrus groves were replaced with young citrus trees. **Pomegranate and quince** maturation continued. **Olives** developed and increased in size. Some fields were prepped and plowed in preparation for berry planting season. A new citrus virus, citrus yellow vein clearing disease, was discovered in Tulare during regular inspections of residential trees. The State will continue to conduct a survey in residential and commercial properties around the detection site to determine the extent of the virus.

## NUT CROPS

**Almond** harvest was well underway. Weed spraying and irrigation continued where necessary. **Walnut** and **pistachio** maturity was progressing as harvest neared. Pistachio harvest began in Tulare County.

## VEGETABLE CROPS

In the Central Valley, higher temperatures affected **eggplants**. In Colusa, Sacramento, Solano, and Yolo counties, processing **tomato** harvest continued. In Stanislaus and Sutter counties, tomato harvest continued. Tomato fields were sprayed for aphids, two-spotted spider mites, and greenhouse whitefly. In Tulare County, producers were harvesting **onions, summer squash, and eggplant**.

## LIVESTOCK

Rangeland and non-irrigated pasture were in poor condition. Irrigated range remained in good to excellent condition. Cattle supplemental feeding continued to compensate for poor quality range. Some cattle were moved to better forage and some herds were reduced.

**NOTICE:** USDA NASS has changed the base temperature used to calculate growing degree days (found in the table below) from 60 °F to 50 °F.

| CALIFORNIA CROP WEATHER – WEEK ENDING AUGUST 28, 2022 |                                      |                                    |      |              |  |                          |                               |                            |                      |                            |                          |
|---|--------------------------------------|------------------------------------|------|--------------|--|--------------------------|-------------------------------|----------------------------|----------------------|----------------------------|--------------------------|
| STATIONS  | TEMPERATURE                          |                                    |      |              | GROWING DEGREE DAYS AT 50 °F BASE <sup>1</sup> |                          | RAIN DAYS <sup>2</sup>        | PRECIPITATION <sup>3</sup> |                      |                            |                          |
|   | Average for Week Ending Aug 28, 2022 | Departure from Normal <sup>5</sup> | High | Low          | This Year                                      | Normal Year <sup>5</sup> | This Season                   | This Week                  | This Season          | Normal Season <sup>5</sup> | Normal Year <sup>5</sup> |
|   |                                      |                                    |      |              | Jan 1 - Aug 28, 2022                           | Jan 1 - Aug 28, 2022     | Oct 1 - Aug 28, 2022          | Week Ending Aug 28, 2022   | Oct 1 - Aug 28, 2022 | Oct 1 - Aug 28             | Oct 1 - Sept 30          |
| -- Degrees Fahrenheit --                              |                                      |                                    |      | -- Number -- |  | -- Days --               | -- Inches of Precipitation -- |                            |                      |                            |                          |
| <b>North Coast</b>                                    |                                      |                                    |      |              |  |                          |                               |                            |                      |                            |                          |
| Eureka WFO  | 60                                   | 2                                  | 68   | 50           | 1,014  | 871                      | 117                           | 0.00                       | 26.31                | 39.69                      | 40.61                    |
| Ukiah   | 77                                   | 4                                  | 101  | 56           | 3,044  | 2,784                    | 66                            | 0.00                       | 19.58                | 34.67                      | 35.07                    |
| Santa Rosa  | 69                                   | 1                                  | 99   | 52           | 2,532  | 2,257                    | 60                            | 0.00                       | 26.19                | 33.64                      | 34.00                    |
| Napa State Hospital                                   | 68                                   | 1                                  | 90   | 54           | 2,303  | 2,155                    | 49                            | 0.00                       | 18.01                | 20.16                      | 20.36                    |
| <b>Central Coast</b>                                  |                                      |                                    |      |              |  |                          |                               |                            |                      |                            |                          |
| San Francisco   | 66                                   | 1                                  | 76   | 56           | 2,358  | 2,173                    | 45                            | 0.00                       | 18.19                | 19.56                      | 19.77                    |
| San Jose  | 72                                   | 2                                  | 87   | 57           | 3,070  | 2,766                    | 33                            | 0.00                       | 7.31                 | 13.40                      | 13.58                    |
| Salinas   | NA                                   | NA                                 | NA   | NA           | NA   | 2,043                    | NA                            | NA                         | NA                   | 12.53                      | 12.66                    |
| Monterey  | 62                                   | -1                                 | 75   | 55           | 2,202  | 1,836                    | 41                            | 0.00                       | 10.70                | 16.17                      | 16.36                    |
| Paso Robles   | 74                                   | 1                                  | 103  | 55           | 3,383  | 2,801                    | 24                            | 0.00                       | 8.72                 | 12.09                      | 12.24                    |
| <b>Sacramento Valley</b>                              |                                      |                                    |      |              |  |                          |                               |                            |                      |                            |                          |
| Redding   | 84                                   | 4                                  | 104  | 63           | 4,359  | 3,825                    | 60                            | 0.00                       | 18.86                | 33.05                      | 33.70                    |
| Red Bluff   | 83                                   | 4                                  | 103  | 62           | 4,290  | 3,742                    | 47                            | 0.00                       | 12.66                | 22.92                      | 23.25                    |
| Orland  | NA                                   | NA                                 | NA   | NA           | NA   | 3,493                    | NA                            | NA                         | NA                   | 21.14                      | 21.52                    |
| Oroville  | 82                                   | 4                                  | 102  | 63           | 4,286  | 3,700                    | 50                            | 0.00                       | 17.37                | 25.51                      | 25.84                    |
| Marysville  | 79                                   | 3                                  | 103  | 57           | 3,866  | 3,449                    | 42                            | 0.00                       | 8.49                 | 19.96                      | 20.21                    |
| Sacramento  | 80                                   | 5                                  | 102  | 59           | 3,789  | 3,221                    | 43                            | 0.00                       | 14.03                | 17.87                      | 18.10                    |
| <b>San Joaquin Valley</b>                             |                                      |                                    |      |              |  |                          |                               |                            |                      |                            |                          |
| Stockton  | 79                                   | 2                                  | 100  | 59           | 3,840  | 3,591                    | 36                            | 0.00                       | 9.81                 | 13.37                      | 13.53                    |
| Modesto   | 80                                   | 3                                  | 99   | 61           | 3,841  | 3,660                    | 34                            | 0.00                       | 9.01                 | 12.21                      | 12.34                    |
| Merced Macready                                       | 82                                   | 5                                  | 104  | 63           | 3,999  | 3,524                    | 28                            | 0.00                       | 7.45                 | 11.75                      | 11.87                    |
| Madera  | 82                                   | 4                                  | 105  | 62           | 3,874  | 3,721                    | 23                            | 0.00                       | 2.66                 | 10.76                      | 10.86                    |
| Fresno  | 87                                   | 6                                  | 106  | 69           | 4,769  | 4,160                    | 25                            | 0.00                       | 6.35                 | 10.94                      | 11.05                    |
| Lemoore   | 85                                   | 7                                  | 108  | 64           | 4,225  | 3,726                    | 20                            | 0.00                       | 4.03                 | 7.15                       | 7.23                     |
| Visalia   | 82                                   | 4                                  | 103  | 63           | 4,356  | 3,716                    | 29                            | 0.00                       | 7.45                 | 10.25                      | 10.37                    |
| Bakersfield   | 88                                   | 6                                  | 105  | 73           | 4,820  | 4,418                    | 21                            | 0.00                       | 5.42                 | 6.31                       | 6.40                     |
| <b>Cascade Sierra</b>                                 |                                      |                                    |      |              |  |                          |                               |                            |                      |                            |                          |
| Alturas   | 67                                   | 3                                  | 92   | 40           | 1,554  | 1,457                    | 67                            | 0.00                       | 7.57                 | 11.30                      | 11.72                    |
| Mount Shasta  | 72                                   | 6                                  | 94   | 50           | 2,000  | 1,622                    | 83                            | 0.00                       | 20.26                | 37.09                      | 37.86                    |
| Blue Canyon   | 74                                   | 5                                  | 83   | 66           | 2,057  | 1,707                    | 67                            | 0.00                       | 65.37                | 61.83                      | 62.80                    |
| Yosemite Valley                                       | NA                                   | NA                                 | NA   | NA           | NA   | 2,169                    | NA                            | NA                         | NA                   | 39.77                      | 40.65                    |
| <b>South Coast</b>                                    |                                      |                                    |      |              |  |                          |                               |                            |                      |                            |                          |
| Santa Maria   | 63                                   | -1                                 | 75   | 53           | 2,105  | 2,144                    | 25                            | 0.00                       | 7.81                 | 13.25                      | 13.42                    |
| Santa Barbara   | 65                                   | -1                                 | 73   | 56           | 2,614  | 2,362                    | 26                            | 0.00                       | 10.54                | 17.18                      | 17.38                    |
| Oxnard  | 65                                   | -2                                 | 73   | 58           | 2,670  | 2,725                    | 25                            | 0.00                       | 11.65                | 12.85                      | 13.05                    |
| Riverside   | 80                                   | 0                                  | 97   | 65           | 4,687  | 4,089                    | 24                            | 0.00                       | 4.88                 | 9.28                       | 9.48                     |
| Los Angeles   | 71                                   | 0                                  | 80   | 64           | 3,605  | 3,279                    | 27                            | 0.00                       | 10.19                | 12.12                      | 12.33                    |
| San Diego   | 73                                   | 0                                  | 79   | 69           | 3,348  | 3,583                    | 28                            | 0.00                       | 6.10                 | 9.67                       | 9.87                     |
| <b>Southeast Interior</b>                             |                                      |                                    |      |              |  |                          |                               |                            |                      |                            |                          |
| Bishop  | 80                                   | 6                                  | 103  | 56           | 3,255  | 2,951                    | 17                            | 0.00                       | 5.65                 | 4.72                       | 4.87                     |
| Daggett   | 91                                   | 4                                  | 108  | 76           | 5,468  | 4,999                    | 13                            | 0.00                       | 1.71                 | 3.58                       | 3.80                     |
| Lancaster   | 88                                   | 8                                  | 108  | 69           | 4,261  | 3,684                    | 16                            | 0.00                       | 4.10                 | 6.69                       | 6.86                     |
| Thermal   | 94                                   | 4                                  | 109  | 78           | 6,296  | 5,994                    | 7                             | 0.00                       | 0.20                 | 2.62                       | 2.98                     |
| Blythe  | 94                                   | 0                                  | 109  | 74           | 6,751  | 6,466                    | 10                            | 1.01                       | 2.44                 | 3.20                       | 3.58                     |
| Imperial  | 95                                   | 2                                  | 109  | 82           | 6,469  | 6,211                    | 2                             | 0.00                       | 0.06                 | 2.18                       | 2.39                     |

<sup>1</sup> Previously labeled as growing degree hours. The column title was corrected in the Sept 27, 2021 report. Additionally, degree days were previously calculated using a base of 60 degrees. The base temperature was changed to 50 degrees in the April 4, 2022 report.

<sup>2</sup> Total number of days with precipitation events this season.

<sup>3</sup> Rain or melted snow/ice.

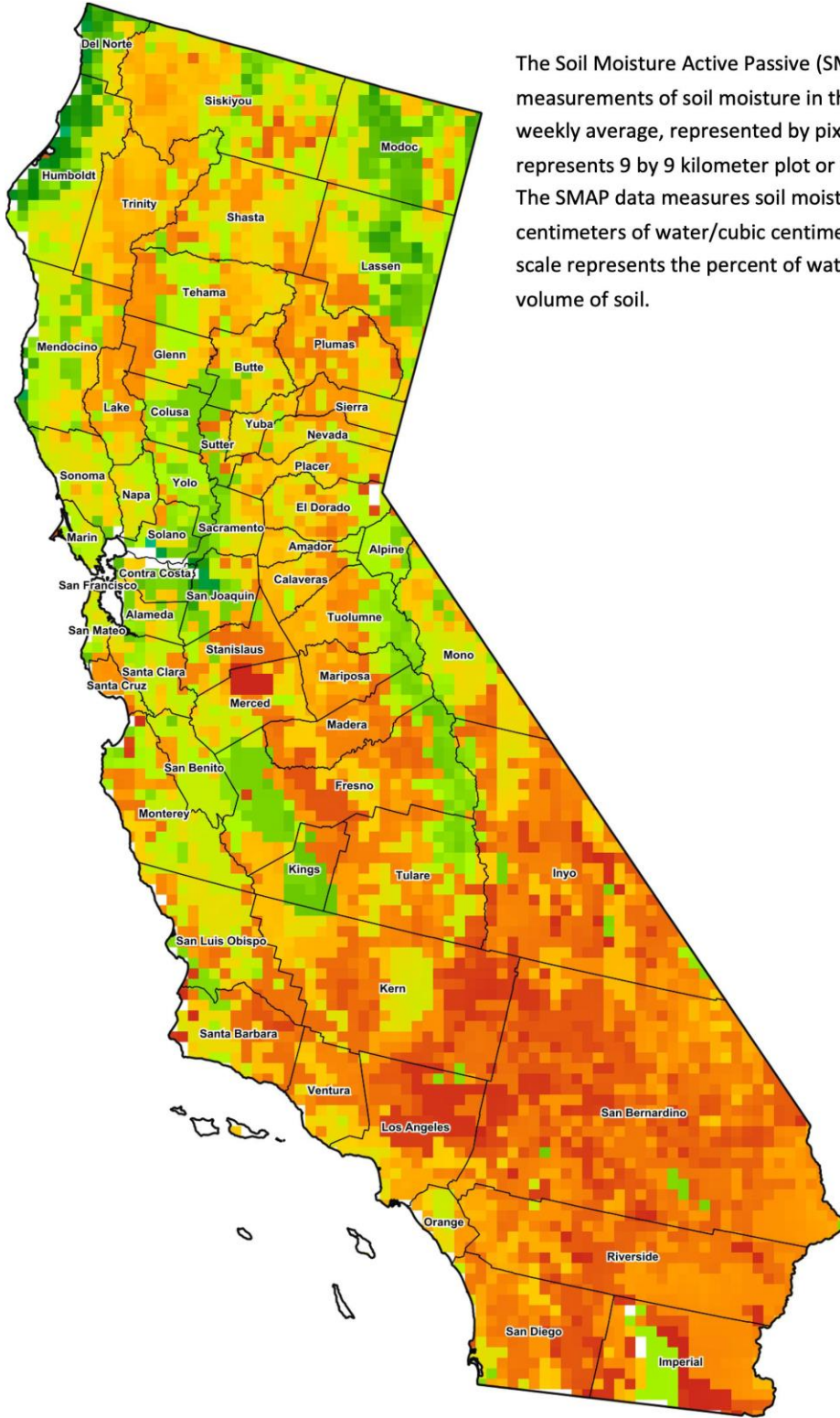
<sup>4</sup> Normal periods 1990-2020 used in departure from normal calculations.

Data retrieved from NOAA and NWS. Calculated by USDA NASS.  
All rights reserved.

### Reservoir Data from the California Department of Water Resources

| Reservoir             | Capacity         | August 28, 2022  |                     |                    | This Date Last Year |                     |
|-----------------------|------------------|------------------|---------------------|--------------------|---------------------|---------------------|
|                       |                  | Storage          | Percent of Capacity | Percent of Average | Storage             | Percent of Capacity |
|                       | <i>Acre Feet</i> | <i>Acre Feet</i> | <i>Percent</i>      | <i>Percent</i>     | <i>Acre Feet</i>    | <i>Percent</i>      |
| Shasta Lake           | 4,547,300        | 1,596,259        | 35                  | 58                 | 1,242,967           | 27                  |
| Lake Oroville         | 3,537,400        | 1,323,106        | 37                  | 63                 | 802,379             | 23                  |
| Trinity Lake          | 2,443,800        | 612,631          | 25                  | 38                 | 863,699             | 35                  |
| New Melones Reservoir | 2,413,000        | 645,343          | 27                  | 47                 | 912,756             | 38                  |
| San Luis Reservoir    | 2,057,200        | 574,126          | 28                  | 73                 | 284,765             | 14                  |
| Don Pedro Reservoir   | 4,547,300        | 1,125,364        | 55                  | 76                 | 1,080,367           | 53                  |

Source: [cdec.water.ca.gov/reportapp/javareports?name=DLYHYDRO](http://cdec.water.ca.gov/reportapp/javareports?name=DLYHYDRO)



The Soil Moisture Active Passive (SMAP) provides measurements of soil moisture in the root zone as a weekly average, represented by pixels. Each pixel represents 9 by 9 kilometer plot or about 20,000 acres. The SMAP data measures soil moisture in cubic centimeters of water/cubic centimeters of soil. The scale represents the percent of water in a given volume of soil.

**Percent Soil Moisture**

- 0%
- 5%
- 10%
- 15%
- 20%
- 25%
- 30%
- 35%
- 40%
- 45%
- 50%
- 55%
- 60%
- >65%

**Drought Conditions from the U.S. Drought Monitor**

| Time         | Percent of Land in Drought Rating |      |      |       |       |       | Drought Severity (DSCI) |
|--------------|-----------------------------------|------|------|-------|-------|-------|-------------------------|
|              | None                              | D0   | D1   | D2    | D3    | D4    |                         |
| Current      | 0.00                              | 0.24 | 2.24 | 54.36 | 26.59 | 16.57 | 357                     |
| Last Week    | 0.00                              | 0.24 | 2.24 | 54.36 | 26.59 | 16.57 | 357                     |
| 3 Months Ago | 0.00                              | 0.14 | 2.30 | 37.75 | 48.22 | 11.59 | 369                     |
| One Year Ago | 0.00                              | 0.00 | 4.42 | 7.21  | 40.98 | 47.40 | 431                     |

The U.S. Drought Monitor is jointly produced by the National Drought Mitigation Center at the University of Nebraska-Lincoln, the United States Department of Agriculture, and the National Oceanic and Atmospheric Administration. [droughtmonitor.unl.edu/CurrentMap/StateDroughtMonitor.aspx?CA](http://droughtmonitor.unl.edu/CurrentMap/StateDroughtMonitor.aspx?CA)