



# California Crop Progress & Condition

Cooperating with the California Department of Food and Agriculture  
Pacific Region • P.O. Box 1258 • Sacramento, CA 95812 • (916) 738-6600 • (855) 270-2722 FAX • [www.nass.usda.gov/ca](http://www.nass.usda.gov/ca)

**WEEK ENDING: August 21, 2022**  
**RELEASED: August 22, 2022**

**FREQUENCY: Weekly**  
**VOL. 43 NO. 21**

## WEATHER

Average temperature lows for California ranged from 41 to 73 in the mountains, 51 to 71 along the coast, 57 to 83 in the Central Valley, and 59 to 89 in the desert. Average temperature highs for the state ranged from 62 to 108 along the coast, 81 to 98 in the mountains, 94 to 109 in the desert, and 94 to 109 in the Central Valley.

## FIELD CROPS

In the Sacramento Valley, **rice** crops continued to mature with hot days and warm nights. Groundwork continued with discing, chiseling, landplaning, and bed making. In Stanislaus County, **corn** and **alfalfa** hay harvest for silage continued. Alfalfa was being sprayed for western yellow striped armyworm and weeds. In Tulare County, **cotton** fields were in full bloom. Some fields of alfalfa were being cut for silage and baled. Corn silage harvest was in full swing. Corn fields that were planted late in the season were still immature; some plants have not yet formed tassels. Silage fields that have been harvested were being fertilized and prepped for winter crops. **Dry Bean** fields continued to be treated for weeds and insects.

## FRUIT CROPS

Stone fruit harvest, pruning, and topping continued. **Peach, prune, nectarine, and plum** harvests remained steady. Raisin **grape** development continued. Table grape harvest was well underway. **Persimmons, kiwifruits, Asian pears, grapefruits, and lemons** sizing steadily increased. Old citrus groves were removed to make way for new plantings. **Pomegranate and quince** maturation continued. **Olive** development was ongoing.

## NUT CROPS

**Almond** harvest continued. Weed and pest spraying continued where necessary. **Walnut** development was ongoing. **Pistachio** maturity was nearing harvest.

## VEGETABLE CROPS

Capay Valley harvest of organic vegetables continued. Harvest of **tomatoes** in Sutter County began. In Colusa, Sacramento, Solano, and Yolo counties, processing tomato harvest continued. In Stanislaus County, **garlic** continued to dry in the fields. Early variety tomatoes were harvested. In Tulare County, **peppers, pumpkins, squash, and sweet corn** continued to grow. **Eggplant** and Serrano peppers continued to be harvested. Some local stands sold summer squash and tomatoes.

## LIVESTOCK

Rangeland and non-irrigated pasture continued to be in fair to poor condition due to the ongoing drought and extreme heat. Irrigated range remained in good to excellent condition. Milk production at some dairies was negatively impacted by the high temperatures. Cattle supplemental feeding continued to compensate for poor quality range. Some cattle were moved to better forage and some herds were reduced.

**NOTICE:** USDA NASS has changed the base temperature used to calculate growing degree days (found in the table below) from 60 °F to 50 °F.

CALIFORNIA CROP WEATHER – WEEK ENDING AUGUST 21, 2022											
STATIONS	TEMPERATURE				GROWING DEGREE DAYS AT 50 °F BASE <sup>1</sup>		RAIN DAYS <sup>2</sup>	PRECIPITATION <sup>3</sup>			
	Average for Week Ending Aug 21, 2022	Departure from Normal <sup>5</sup>	High	Low	This Year	Normal Year <sup>5</sup>	This Season	This Week	This Season	Normal Season <sup>5</sup>	Normal Year <sup>5</sup>
					Jan 1 - Aug 21, 2022	Jan 1 - Aug 21, 2022	Oct 1 - Aug 21, 2022	Week Ending Aug 21, 2022	Oct 1 - Aug 21, 2022	Oct 1 - Aug 21	Oct 1 - Sept 30
-- Degrees Fahrenheit --				-- Number --		-- Days --	-- Inches of Precipitation --				
<b>North Coast</b>											
Eureka WFO	60	1	68	53	946	808	117	0.00	26.31	39.65	40.61
Ukiah	81	7	108	58	2,857	2,619	66	0.00	19.58	34.65	35.07
Santa Rosa	72	4	100	51	2,392	2,124	60	0.00	26.19	33.62	34.00
Napa State Hospital	70	3	95	55	2,170	2,029	49	0.00	18.01	20.15	20.36
<b>Central Coast</b>											
San Francisco	66	1	81	56	2,240	2,061	45	0.00	18.19	19.55	19.77
San Jose	74	4	97	59	2,918	2,619	33	0.00	7.31	13.39	13.58
Salinas	NA	NA	NA	NA	NA	1,938	NA	NA	NA	12.52	12.66
Monterey	64	1	76	53	2,115	1,745	41	0.06	10.71	16.16	16.36
Paso Robles	77	3	104	53	3,211	2,634	24	0.00	8.72	12.09	12.24
<b>Sacramento Valley</b>											
Redding	91	10	109	66	4,122	3,614	60	0.00	18.86	33.02	33.70
Red Bluff	89	9	108	68	4,057	3,537	47	0.00	12.66	22.91	23.25
Orland	NA	NA	NA	NA	NA	3,304	NA	NA	NA	21.13	21.52
Oroville	87	8	106	65	4,060	3,502	50	0.00	17.37	25.50	25.84
Marysville	83	6	106	58	3,661	3,262	42	0.00	8.49	19.95	20.21
Sacramento	83	8	107	60	3,579	3,045	43	0.00	14.03	17.85	18.10
<b>San Joaquin Valley</b>											
Stockton	83	6	107	57	3,633	3,402	36	0.00	9.81	13.37	13.53
Modesto	83	5	102	61	3,631	3,467	34	0.00	9.01	12.21	12.34
Merced Macready	84	6	105	59	3,781	3,330	28	0.00	7.45	11.75	11.87
Madera	85	6	106	59	3,649	3,518	23	0.00	2.66	10.76	10.86
Fresno	90	8	107	70	4,510	3,938	25	0.00	6.35	10.94	11.05
Lemoore	86	7	108	60	3,979	3,527	20	0.00	4.03	7.15	7.23
Visalia	84	5	104	64	4,128	3,516	29	0.00	7.45	10.25	10.37
Bakersfield	91	8	107	68	4,553	4,187	21	0.00	5.42	6.31	6.40
<b>Cascade Sierra</b>											
Alturas	71	6	95	41	1,434	1,356	67	0.04	7.57	11.24	11.72
Mount Shasta	76	9	98	53	1,843	1,507	83	0.00	20.26	37.05	37.86
Blue Canyon	77	7	87	66	1,885	1,571	67	0.00	65.37	61.78	62.80
Yosemite Valley	NA	NA	NA	NA	NA	2,013	NA	NA	NA	39.76	40.65
<b>South Coast</b>											
Santa Maria	63	-1	79	52	2,012	2,039	25	0.00	7.81	13.24	13.42
Santa Barbara	65	-1	76	56	2,508	2,244	26	0.00	10.54	17.17	17.38
Oxnard	64	-3	74	56	2,557	2,606	25	0.00	11.65	12.85	13.05
Riverside	82	2	100	65	4,473	3,879	24	0.00	4.88	9.27	9.48
Los Angeles	70	-1	79	62	3,452	3,128	27	0.00	10.19	12.12	12.33
San Diego	73	0	80	69	3,178	3,422	28	0.00	6.10	9.67	9.87
<b>Southeast Interior</b>											
Bishop	81	5	102	59	3,041	2,776	17	0.01	5.64	4.71	4.87
Daggett	93	5	107	77	5,175	4,735	13	0.00	1.71	3.54	3.80
Lancaster	89	8	106	66	3,993	3,471	16	0.00	4.10	6.69	6.86
Thermal	92	2	108	76	5,991	5,713	7	0.00	0.20	2.58	2.98
Blythe	93	-2	107	76	6,443	6,155	8	0.00	1.43	3.11	3.58
Imperial	95	1	109	83	6,154	5,907	2	0.00	0.06	2.15	2.39

<sup>1</sup> Previously labeled as growing degree hours. The column title was corrected in the Sept 27, 2021 report. Additionally, degree days were previously calculated using a base of 60 degrees. The base temperature was changed to 50 degrees in the April 4, 2022 report.

<sup>2</sup> Total number of days with precipitation events this season.

<sup>3</sup> Rain or melted snow/ice.

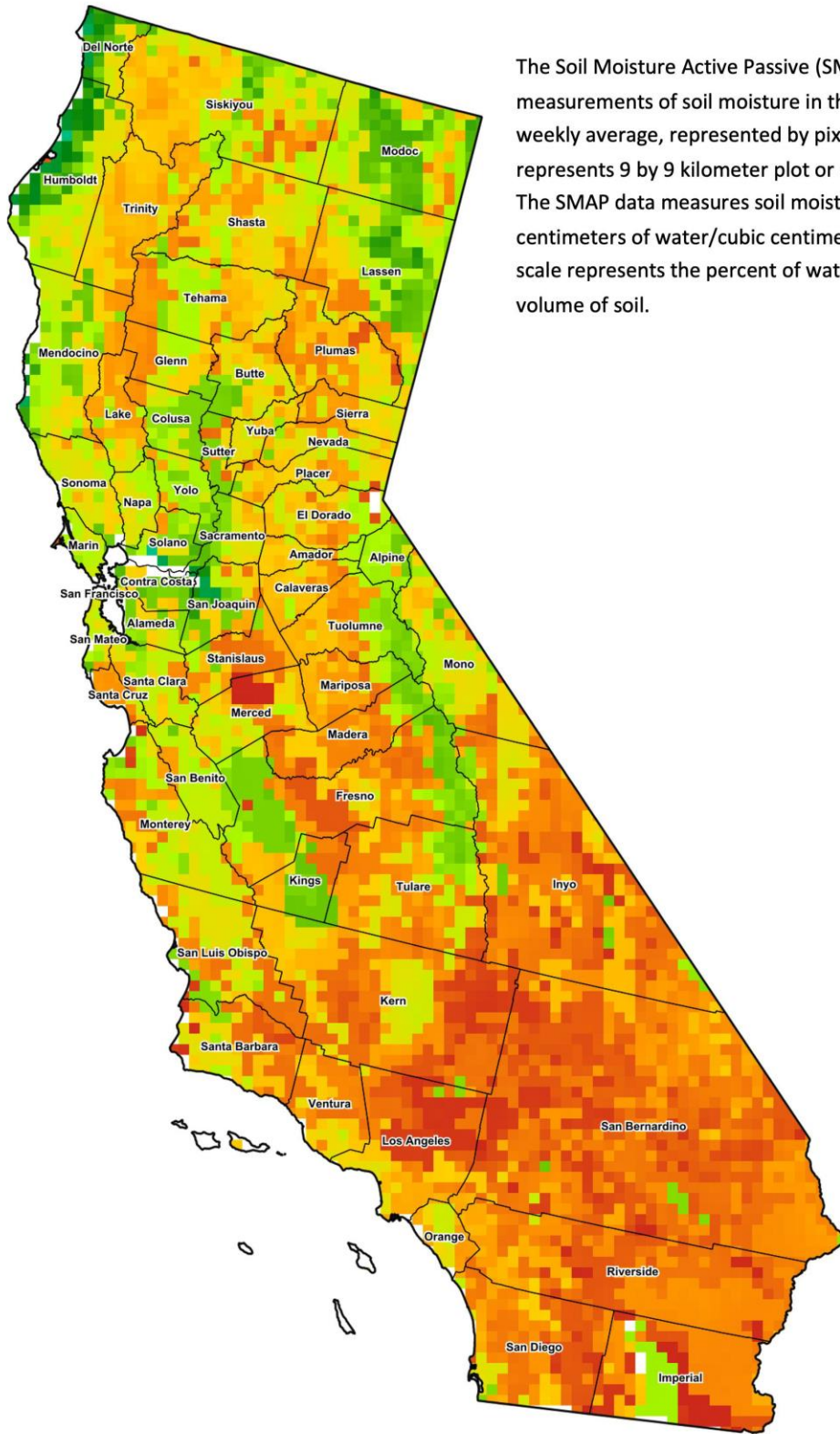
<sup>4</sup> Normal periods 1990-2020 used in departure from normal calculations.

Data retrieved from NOAA and NWS. Calculated by USDA NASS.  
All rights reserved.

### Reservoir Data from the California Department of Water Resources

Reservoir	Capacity	August 21, 2022			This Date Last Year	
		Storage	Percent of Capacity	Percent of Average	Storage	Percent of Capacity
	<i>Acre Feet</i>	<i>Acre Feet</i>	<i>Percent</i>	<i>Percent</i>	<i>Acre Feet</i>	<i>Percent</i>
Shasta Lake	4,547,300	1,617,851	36	57	1,285,969	28
Lake Oroville	3,537,400	1,346,267	38	62	810,360	23
Trinity Lake	2,443,800	628,192	26	38	893,024	36
New Melones Reservoir	2,413,000	659,713	27	47	931,655	39
San Luis Reservoir	2,057,200	589,266	29	73	308,846	15
Don Pedro Reservoir	4,547,300	1,142,454	56	76	1,094,120	54

Source: [cdec.water.ca.gov/reportapp/javareports?name=DLYHYDRO](https://cdec.water.ca.gov/reportapp/javareports?name=DLYHYDRO)



**Drought Conditions from the U.S. Drought Monitor**

Time	Percent of Land in Drought Rating						Drought Severity (DSCI)
	None	D0	D1	D2	D3	D4	
Current	0.00	0.24	2.24	54.36	26.59	16.57	357
Last Week	0.00	0.23	2.25	51.71	29.28	16.53	360
3 Months Ago	0.00	0.14	4.73	35.32	59.64	0.18	355
One Year Ago	0.00	0.00	4.42	7.21	39.40	48.97	433

The U.S. Drought Monitor is jointly produced by the National Drought Mitigation Center at the University of Nebraska-Lincoln, the United States Department of Agriculture, and the National Oceanic and Atmospheric Administration. [droughtmonitor.unl.edu/CurrentMap/StateDroughtMonitor.aspx?CA](http://droughtmonitor.unl.edu/CurrentMap/StateDroughtMonitor.aspx?CA)