



California Crop Progress & Condition

Cooperating with the California Department of Food and Agriculture
Pacific Region • P.O. Box 1258 • Sacramento, CA 95812 • (916) 738-6600 • (855) 270-2722 FAX • www.nass.usda.gov/ca

WEEK ENDING: August 14, 2022
RELEASED: August 15, 2022

FREQUENCY: Weekly
VOL. 43 NO. 20

WEATHER

Average lows for California ranged from 38 to 66 in the mountains, 48 to 74 along the coast, 54 to 73 in the Central Valley, and 57 to 87 in the desert. Average highs for the state ranged from 63 to 102 along the coast, 72 to 97 in the mountains, 89 to 107 in the Central Valley, and 92 to 107 in the desert.

FIELD CROPS

In the Sacramento Valley, growers continued to cut and bale **alfalfa hay**. Groundwork continued with discing, chiseling, landplaning, and bed making. In the San Joaquin Valley, **Pima cotton** stands were advancing. In Stanislaus County, **corn** and alfalfa hay were harvested for silage. Fields were being treated for rodents. Silage corn was sprayed for spider mite and two-spotted mites. In Tulare County, **cotton** fields were in full bloom. Alfalfa fields were cut for silage and hay for dairy feed. Corn silage harvest continued. Harvested fields were fertilized and tilled for fall planting. **Sudan grass** was cut, dried, and baled. **Dry bean** fields continued to be treated for weeds and insects.

FRUIT CROPS

Stone fruit harvest, pruning, and topping continued. **Peach**, **nectarine**, and **plum** harvests remained steady. Reflective tarps were being placed to improve color for some citrus fruits. Raisin **grape** varieties steadily developed. Table grape harvest began to pick up. **Persimmons**, **kiwifruits**, Asian **pears**, **grapefruits**, and **lemons** continued to develop. Old citrus groves were being removed to make way for new plantings. **Pomegranate** maturation continued. **Olives** continued to develop.

NUT CROPS

Almond harvest was underway. Weed and pest spraying continued. **Walnut** and **pistachio** development was ongoing. Old walnut orchards were removed to make way for new plantings.

VEGETABLE CROPS

Capay Valley harvest of organic cherry **tomatoes**, heirloom tomatoes, and **green beans** continued. In Colusa, Sacramento, Solano, and Yolo counties, processing tomato harvest continued. In Stanislaus County, tomato harvest continued, and harvested fields were disced. In Tulare County, **eggplant**, **sweet corn**, **peppers**, **okra**, salad greens, **herbs**, **onions**, **squash**, tomatoes, and other vegetables were harvested and sold at local stands and markets.

LIVESTOCK

Rangeland and non-irrigated pasture continued to be in fair to poor condition due to the lack of water and extreme summer heat. Irrigated range remained in good to excellent condition. Sheep grazed on fallow fields and retired farmland. Cattle supplemental feeding continued to compensate for poor quality range. Some cattle were moved to better forage and some herds were reduced.

NOTICE: USDA NASS has changed the base temperature used to calculate growing degree days (found in the table below) from 60 °F to 50 °F.

CALIFORNIA CROP WEATHER – WEEK ENDING AUGUST 14, 2022											
STATIONS	TEMPERATURE				GROWING DEGREE DAYS AT 50 °F BASE ¹		RAIN DAYS ²	PRECIPITATION ³			
	Average for Week Ending Aug 14, 2022	Departure from Normal ⁴	High	Low	This Year	Normal Year ⁴	This Season	This Week	This Season	Normal Season ⁴	Normal Year ⁴
					Jan 1 - Aug 14, 2022	Jan 1 - August 14, 2022	Oct 1 - Aug 14, 2022	Week Ending Aug 14, 2022	Oct 1 - Aug 14, 2022	Oct 1 - Aug 14	Oct 1 - Sept 30
-- Degrees Fahrenheit --				-- Number --		-- Days --	-- Inches of Precipitation --				
North Coast											
Eureka WFO	60	1	70	49	862	745	117	0.00	26.31	39.61	40.61
Ukiah	72	-3	98	52	2,636	2,448	66	0.00	19.58	34.64	35.07
Santa Rosa	68	0	93	48	2,233	1,991	60	0.00	26.19	33.61	34.00
Napa State Hospital	69	2	86	51	2,027	1,903	49	0.00	18.01	20.15	20.36
Central Coast											
San Francisco	68	3	77	57	2,125	1,953	45	0.00	18.19	19.54	19.77
San Jose	70	0	87	57	2,746	2,472	33	0.00	7.31	13.38	13.58
Salinas	NA	NA	NA	NA	NA	1,836	NA	NA	NA	12.52	12.66
Monterey	65	3	73	58	2,017	1,654	40	0.00	10.65	16.16	16.36
Paso Robles	77	3	101	55	3,018	2,466	24	0.00	8.72	12.09	12.24
Sacramento Valley											
Redding	81	-1	104	62	3,833	3,396	60	0.00	18.86	32.99	33.70
Red Bluff	80	0	102	61	3,780	3,327	47	0.00	12.66	22.90	23.25
Orland	NA	NA	NA	NA	NA	3,114	NA	NA	NA	21.11	21.52
Oroville	80	1	100	61	3,799	3,299	50	0.00	17.37	25.49	25.84
Marysville	78	0	100	57	3,425	3,071	42	0.00	8.49	19.94	20.21
Sacramento	79	3	101	58	3,345	2,863	43	0.00	14.03	17.83	18.10
San Joaquin Valley											
Stockton	77	-1	99	54	3,403	3,206	36	0.00	9.81	13.36	13.53
Modesto	77	-1	96	61	3,401	3,271	34	0.00	9.01	12.20	12.34
Merced Macready	79	1	100	60	3,540	3,134	28	0.00	7.45	11.75	11.87
Madera	79	0	100	59	3,405	3,313	23	0.00	2.66	10.76	10.86
Fresno	84	1	101	67	4,227	3,710	25	0.00	6.35	10.94	11.05
Lemoore	82	3	100	61	3,719	3,324	20	0.00	4.03	7.15	7.23
Visalia	NA	NA	NA	NA	NA	3,310	NA	NA	NA	10.25	10.37
Bakersfield	84	0	100	69	4,262	3,950	21	0.00	5.42	6.31	6.40
Cascade Sierra											
Alturas	67	0	97	38	1,285	1,246	66	0.04	7.53	11.18	11.72
Mount Shasta	68	0	91	44	1,660	1,384	83	0.00	20.26	37.02	37.86
Blue Canyon	70	0	81	61	1,692	1,431	67	0.00	65.37	61.73	62.80
Yosemite Valley	NA	NA	NA	NA	NA	1,850	NA	NA	NA	39.75	40.65
South Coast											
Santa Maria	64	0	75	54	1,912	1,934	25	0.00	7.81	13.24	13.42
Santa Barbara	70	4	82	58	2,398	2,125	26	0.00	10.54	17.17	17.38
Oxnard	67	0	76	58	2,457	2,484	25	0.00	11.65	12.84	13.05
Riverside	86	6	102	69	4,245	3,669	24	0.00	4.88	9.27	9.48
Los Angeles	75	4	84	67	3,304	2,981	27	0.00	10.19	12.12	12.33
San Diego	76	4	85	68	3,009	3,261	28	0.00	6.10	9.67	9.87
Southeast Interior											
Bishop	79	2	100	57	2,824	2,592	16	0.00	5.63	4.69	4.87
Daggett	92	3	105	79	4,868	4,462	13	0.00	1.71	3.50	3.80
Lancaster	87	5	104	70	3,718	3,249	16	0.00	4.10	6.68	6.86
Thermal	93	2	107	78	5,693	5,426	7	0.01	0.20	2.56	2.98
Blythe	93	-2	107	77	6,137	5,840	8	0.86	1.43	3.01	3.58
Imperial	95	1	107	81	5,832	5,599	2	0.00	0.06	2.11	2.39

¹ Previously labeled as growing degree hours. The column title was corrected in the Sept 27, 2021 report. Additionally, degree days were previously calculated using a base of 60 degrees. The base temperature was changed to 50 degrees in the April 4, 2022 report.

² Total number of days with precipitation events this season.

³ Rain or melted snow/ice.

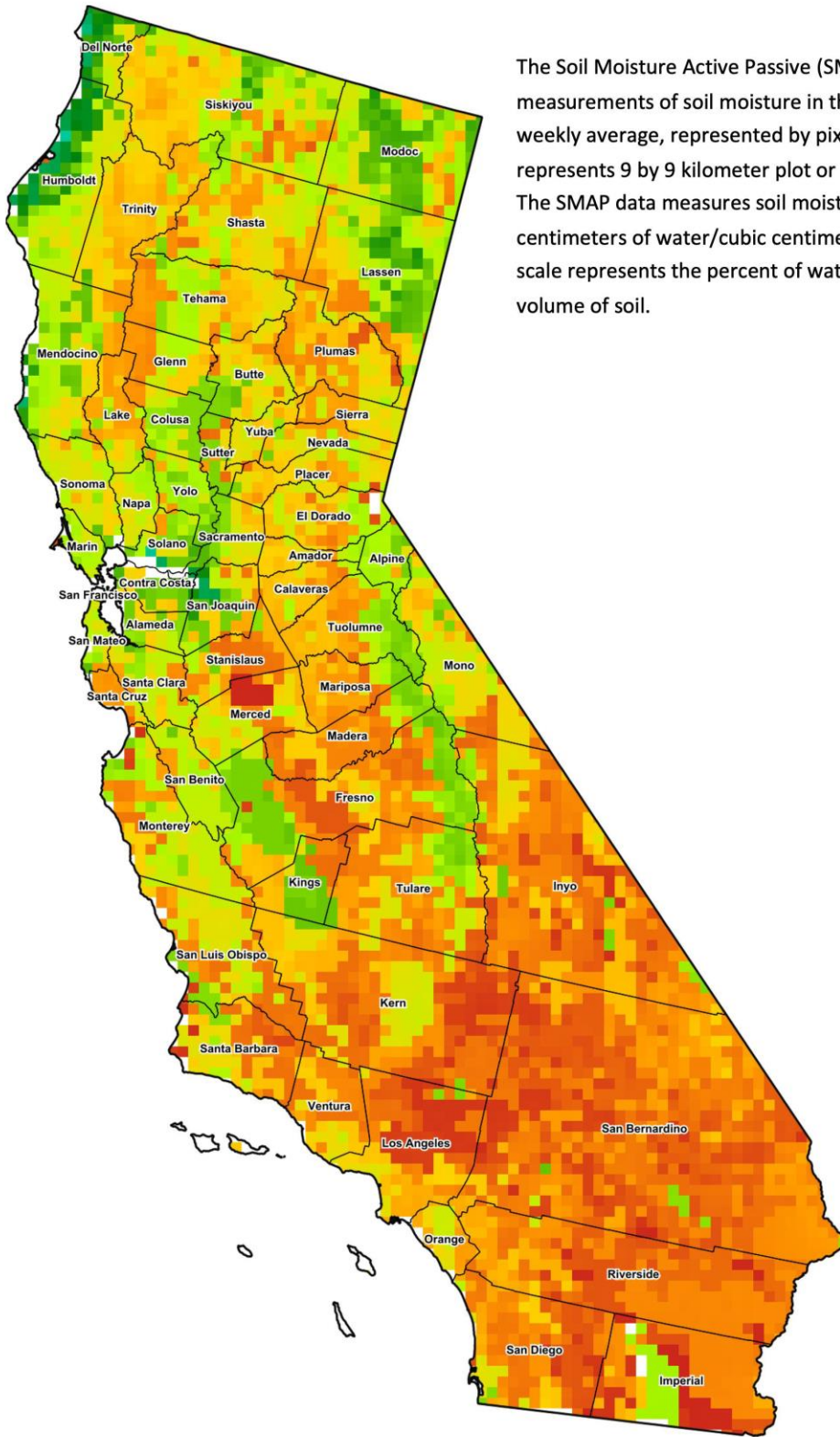
⁴ Normal periods 1990-2020 used in departure from normal calculations.

Data retrieved from NOAA and NWS. Calculated by USDA NASS.
All rights reserved.

Reservoir Data from the California Department of Water Resources

Reservoir	Capacity	August 14, 2022			This Date Last Year	
		Storage	Percent of Capacity	Percent of Average	Storage	Percent of Capacity
	<i>Acre Feet</i>	<i>Acre Feet</i>	<i>Percent</i>	<i>Percent</i>	<i>Acre Feet</i>	<i>Percent</i>
Shasta Lake	4,547,300	1,637,970	36	56	1,333,931	29
Lake Oroville	3,537,400	1,376,927	39	62	829,576	23
Trinity Lake	2,443,800	639,862	26	38	929,700	38
New Melones Reservoir	2,413,000	676,422	28	48	956,042	40
San Luis Reservoir	2,057,200	605,307	30	73	337,377	17
Don Pedro Reservoir	4,547,300	1,163,038	57	76	1,107,145	55

Source: cdec.water.ca.gov/reportapp/javareports?name=DLYHYDRO



Drought Conditions from the U.S. Drought Monitor

Time	Percent of Land in Drought Rating						Drought Severity (DSCI)
	None	D0	D1	D2	D3	D4	
Current	0.00	0.23	2.25	51.71	29.28	16.53	360
Last Week	0.00	0.22	2.31	37.66	47.70	12.12	369
3 Months Ago	0.00	0.14	4.73	35.32	59.81	0.00	355
One Year Ago	0.00	0.00	4.93	6.69	41.28	47.10	431

The U.S. Drought Monitor is jointly produced by the National Drought Mitigation Center at the University of Nebraska-Lincoln, the United States Department of Agriculture, and the National Oceanic and Atmospheric Administration. droughtmonitor.unl.edu/CurrentMap/StateDroughtMonitor.aspx?CA