



California Crop Progress & Condition

Cooperating with the California Department of Food and Agriculture
Pacific Region • P.O. Box 1258 • Sacramento, CA 95812 • (916) 738-6600 • (855) 270-2722 FAX • www.nass.usda.gov/ca

WEEK ENDING: July 10, 2022
RELEASED: July 11, 2022

FREQUENCY: Weekly
VOL. 43 NO. 15

WEATHER

Average lows for California ranged from 41 to 61 in the mountains, 49 to 66 along the coast, 51 to 86 in the desert, and 54 to 72 in the Central Valley. Average highs for the state ranged from 60 to 100 along the coast, 64 to 91 in the mountains, 80 to 107 in the Central Valley, and 87 to 113 in the desert.

FIELD CROPS

Sudan grass for silage was planted in Sonoma County. In San Mateo County, cutting of hay and baling began. In the Sacramento Valley, **corn** fields were making good progress. In Stanislaus County, weeds continued to be sprayed in corn and forage hay fields. Forage hay was being sprayed for army worms. In the San Joaquin Valley, **cotton** bloom was in its advanced stage and boll-setting continued. Cotton continued to make good progress. Insect activity increased and treatments for lygus bugs were made. **Alfalfa** hay and silage were being harvested. **Wheat** straw was being baled in the Central Valley. In Tulare County, corn and **sorghum** planting were nearly completed. Corn for silage was tasseling out with later varieties still growing steadily. Cotton fields were beginning to bloom and irrigation continued with the warmer temperatures. Alfalfa continued to be cut and baled for hay.

FRUIT CROPS

Middle season varieties of **peaches**, **nectarines**, **plums**, **plouts**, and **apricots** continued to be harvested. Irrigation continued to assist with heat stress. Table and raisin **grape** varieties were developing well. Grape harvest began in Kern County. **Cherry** orchards were being removed while others were prepped for next year. **Persimmon** and **pomegranate** sizing steadily increased. Gold Nugget **mandarins**, **tangelos**, **grapefruit**, and **lemon** harvests progressed. Valencia **orange** harvest began to wrap up for the season. **Kiwifruit** and **olive** tree fruit continued to develop. **Blueberry** and **strawberry** harvests came to an end.

NUT CROPS

Insecticide and fungicide spraying took place where necessary. Fertilizer applications began to slowly wrap up. **Almond** hull split was ongoing with some reports of mites and Navel orangeworm present. **Walnut** and **pistachio** nut fill continued. Walnut husk flies were reported in some areas which prompted plans for spraying in the coming weeks.

VEGETABLE CROPS

In Colusa, Sacramento, Solano, and Yuba counties, organic cherry **tomato** harvest continued. Processing tomato harvest continued. In San Mateo County, **chard**, **kale**, **cabbage**, **cauliflower**, and **beets** were harvested. In Stanislaus County, **broccoli** was harvested, and spent fields were shredded. In Tulare County, **lettuce**, **onions**, tomatoes, **cucumbers**, **eggplant**, **garlic**, Bell **peppers**, Serrano peppers, summer **squash**, **sweet corn**, and **tomatillos** were harvested and sold at local Farmers' Markets.

LIVESTOCK

Rangeland and non-irrigated pasture were in poor to fair condition due to the lack of water and summer heat. Irrigated range remained in good to excellent condition. Bees were active in melon and sunflower fields. Sheep grazed on fallow fields and retired farmland. Cattle grazing on deteriorating range received supplemental hay.

NOTICE: USDA NASS has changed the base temperature used to calculate growing degree days (found in the table below) from 60 °F to 50 °F.

CALIFORNIA CROP WEATHER – WEEK ENDING JULY 10, 2022											
STATIONS	TEMPERATURE				GROWING DEGREE DAYS AT 50 °F BASE ¹		RAIN DAYS ²	PRECIPITATION ³			
	Average for Week Ending Jul 10, 2022	Departure from Normal ⁴	High	Low	This Year	Normal Year ⁴	This Season	This Week	This Season	Normal Season ⁴	Normal Year ⁴
					Jan 1 - Jul 10, 2022	Jan 1 - July 10, 2022	Oct 1 - Jul 10, 2022	Week Ending Jul 10, 2022	Oct 1 - Jul 10, 2022	Oct 1 - Jul 10	Oct 1 - Sept 30
-- Degrees Fahrenheit --				-- Number --		-- Days --	-- Inches of Precipitation --				
North Coast											
Eureka WFO	59	2	64	52	526	440	114	0.53	26.25	39.44	40.61
Ukiah	72	-2	100	55	1,676	1,546	66	0.03	19.58	34.61	35.07
Santa Rosa	68	0	94	50	1,587	1,360	60	0.00	26.19	33.60	34.00
Napa State Hospital	68	1	87	50	1,411	1,296	48	0.00	18.00	20.14	20.36
Central Coast											
San Francisco	66	2	80	57	1,580	1,435	44	0.00	18.18	19.53	19.77
San Jose	70	1	91	58	2,013	1,772	33	0.00	7.31	13.36	13.58
Salinas	NA	NA	NA	NA	NA	1,358	NA	NA	NA	12.49	12.66
Monterey	65	4	75	54	1,508	1,220	40	0.00	10.65	16.14	16.36
Paso Robles	74	1	99	49	2,052	1,618	24	0.00	8.72	12.02	12.24
Sacramento Valley											
Redding	80	-3	106	65	2,548	2,214	60	0.00	18.86	32.91	33.70
Red Bluff	79	-3	107	61	2,550	2,197	47	0.00	12.66	22.85	23.25
Orland	NA	NA	NA	NA	NA	2,102	NA	NA	NA	21.06	21.52
Oroville	78	-2	101	59	2,596	2,224	50	0.00	17.37	25.45	25.84
Marysville	76	-2	102	56	2,340	2,066	42	0.00	8.49	19.91	20.21
Sacramento	76	0	101	58	2,265	1,928	43	0.00	14.03	17.81	18.10
San Joaquin Valley											
Stockton	76	-2	100	55	2,347	2,201	36	0.00	9.81	13.36	13.53
Modesto	75	-3	96	57	2,329	2,240	33	0.00	9.00	12.20	12.34
Merced Macready	77	-2	99	57	2,388	2,099	28	0.00	7.45	11.75	11.87
Madera	77	-3	99	54	2,250	2,241	23	0.00	2.66	10.75	10.86
Fresno	80	-3	98	60	2,899	2,516	24	0.00	6.30	10.92	11.05
Lemoore	79	-1	99	57	2,481	2,248	20	0.00	4.03	7.14	7.23
Visalia	79	-1	102	59	2,644	2,232	27	0.00	7.27	10.25	10.37
Bakersfield	80	-4	97	62	2,902	2,709	21	0.00	5.42	6.31	6.40
Cascade Sierra											
Alturas	64	-3	89	41	520	587	63	0.00	7.46	10.86	11.72
Mount Shasta	65	-2	87	48	807	706	81	0.26	19.13	36.75	37.86
Blue Canyon	63	-6	79	50	857	682	66	0.00	65.28	61.62	62.80
Yosemite Valley	NA	NA	NA	NA	NA	991	NA	NA	NA	39.58	40.65
South Coast											
Santa Maria	63	-1	76	51	1,397	1,410	25	0.00	7.81	13.22	13.42
Santa Barbara	66	1	76	55	1,786	1,537	26	0.00	10.54	17.16	17.38
Oxnard	64	-2	71	56	1,868	1,861	25	0.00	11.65	12.83	13.05
Riverside	76	-2	96	59	3,102	2,626	23	0.00	4.85	9.16	9.48
Los Angeles	68	-1	75	62	2,546	2,260	27	0.00	10.19	12.09	12.33
San Diego	68	-2	72	64	2,216	2,491	28	0.00	6.10	9.60	9.87
Southeast Interior											
Bishop	76	-2	101	51	1,732	1,592	12	0.00	4.76	4.54	4.87
Daggett	87	-2	106	69	3,369	3,047	9	0.00	1.09	3.18	3.80
Lancaster	80	-2	100	62	2,377	2,089	16	0.00	4.10	6.58	6.86
Thermal	90	-1	113	67	4,132	3,959	6	0.00	0.19	2.41	2.98
Blythe	93	-1	113	74	4,498	4,232	5	0.00	0.28	2.65	3.58
Imperial	91	-1	112	69	4,228	4,046	2	0.00	0.06	1.95	2.39

¹ Previously labeled as growing degree hours. The column title was corrected in the Sept 27, 2021 report. Additionally, degree days were previously calculated using a base of 60 degrees. The base temperature was changed to 50 degrees in the April 4, 2022 report.

² Total number of days with precipitation events this season.

³ Rain or melted snow/ice.

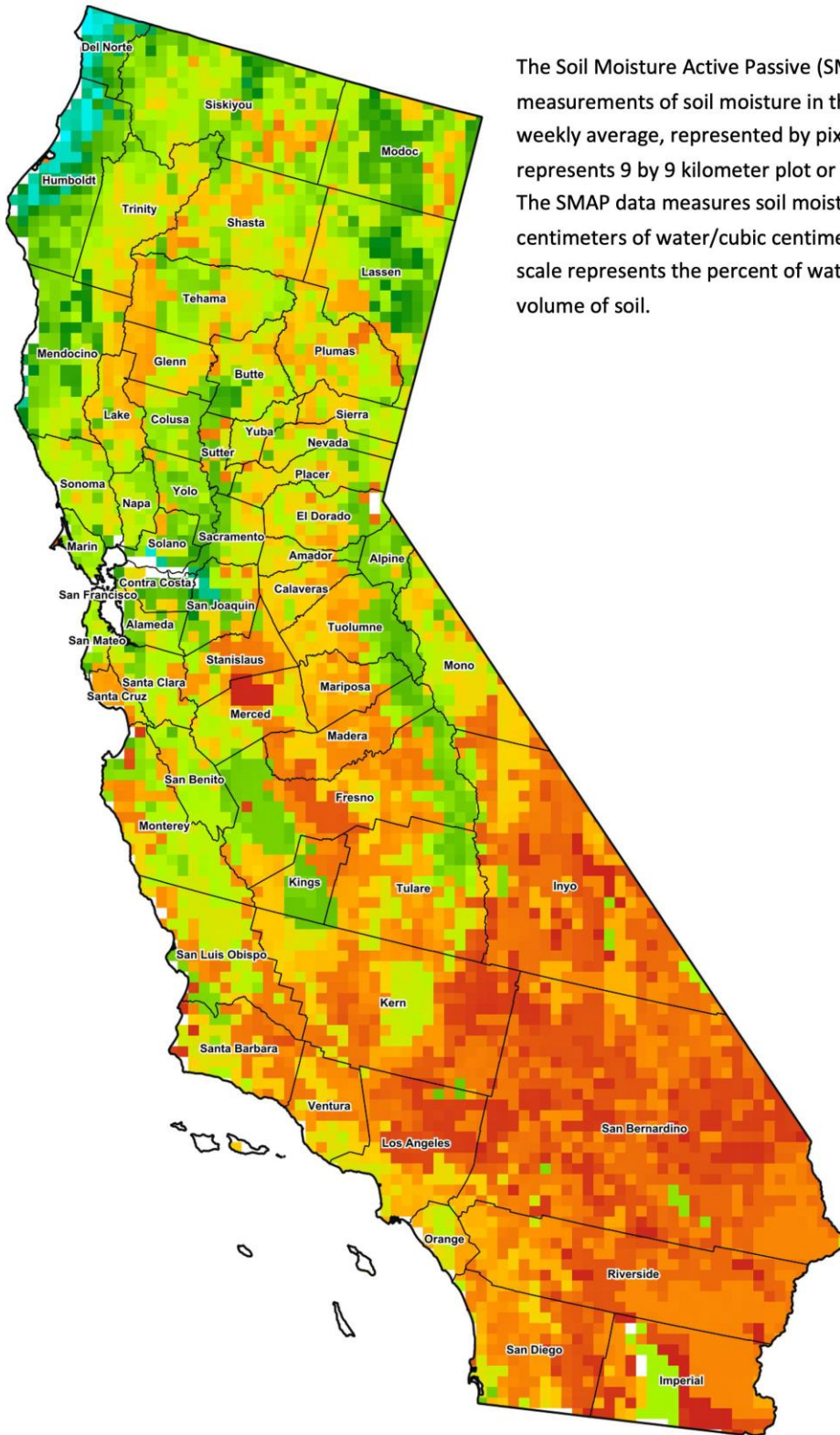
⁴ Normal periods 1990-2020 used in departure from normal calculations.

Data retrieved from NOAA and NWS. Calculated by USDA NASS.
All rights reserved.

Reservoir Data from the California Department of Water Resources

Reservoir	Capacity	July 10, 2022			This Date Last Year	
		Storage	Percent of Capacity	Percent of Average	Storage	Percent of Capacity
		<i>Acre Feet</i>	<i>Percent</i>	<i>Percent</i>	<i>Acre Feet</i>	<i>Percent</i>
Shasta Lake	4,547,300	1,747,317	38	51	1,650,527	36
Lake Oroville	3,537,400	1,621,053	46	63	1,047,380	30
Trinity Lake	2,443,800	700,774	29	38	1,111,049	45
New Melones Reservoir	2,413,000	760,233	32	51	1,160,874	48
San Luis Reservoir	2,057,200	735,544	36	71	582,878	29
Don Pedro Reservoir	4,547,300	1,275,910	63	77	1,220,932	60

Source: cdec.water.ca.gov/reportapp/javareports?name=DLYHYDRO



The Soil Moisture Active Passive (SMAP) provides measurements of soil moisture in the root zone as a weekly average, represented by pixels. Each pixel represents 9 by 9 kilometer plot or about 20,000 acres. The SMAP data measures soil moisture in cubic centimeters of water/cubic centimeters of soil. The scale represents the percent of water in a given volume of soil.



Drought Conditions from the U.S. Drought Monitor

Time	Percent of Land in Drought Rating						Drought Severity (DSCI)
	None	D0	D1	D2	D3	D4	
Current	0.00	0.20	2.31	37.67	48.22	11.59	369
Last Week	0.00	0.21	2.31	37.67	48.22	11.59	369
3 Months Ago	0.00	0.00	6.35	52.97	40.67	0.00	334
One Year Ago	0.00	0.00	5.27	9.29	52.12	33.32	413

The U.S. Drought Monitor is jointly produced by the National Drought Mitigation Center at the University of Nebraska-Lincoln, the United States Department of Agriculture, and the National Oceanic and Atmospheric Administration. droughtmonitor.unl.edu/CurrentMap/StateDroughtMonitor.aspx?CA