



California Crop Progress & Condition

Cooperating with the California Department of Food and Agriculture
Pacific Region • P.O. Box 1258 • Sacramento, CA 95812 • (916) 738-6600 • (855) 270-2722 FAX • www.nass.usda.gov/ca

WEEK ENDING: June 12, 2022
RELEASED: June 13, 2022

FREQUENCY: Weekly
VOL. 43 NO. 11

WEATHER

Average lows for California ranged from 32 to 64 in the mountains, 46 to 77 in the Central Valley, 47 to 66 along the coast, and 50 to 87 in the desert. Average highs for the state ranged from 47 to 87 in the mountains, 59 to 105 along the coast, 66 to 104 in the Central Valley, and 92 to 115 in the desert.

FIELD CROPS

In the Sacramento Valley, winter crops season was nearly completed. **Wheat** straw was being windrowed, baled, banked out and taken off the fields. The **rice** crop was advancing at a normal rate. In Stanislaus County, weeds were being sprayed in **corn** fields. **Alfalfa** hay and silage were being harvested. Rice continued to be treated for pests in Sutter County. **Sunflowers** continued heading. In the San Joaquin Valley, **cotton** was making good progress. In Tulare County, farmers were starting to spread fertilizer and till their fields in preparation for summer plantings. Growers were turning on irrigation systems to keep soil conditions moist to support row crop growth during dry and hot weather. Farmers continued to harvest wheat and **barley**. Corn fields were bearing more leaves and was in early vegetative stage. Cotton fields were showing good growth.

FRUIT CROPS

The stone fruit season was well underway with early varieties of **peaches**, **nectarines**, **plums**, and **apricots** being harvested. Irrigation and weed control efforts continued. **Apple** and **pear** development was ongoing. **Grape** and **kiwifruit** size continued to increase, and vines were trimmed where necessary. **Persimmon** trees and **pomegranates** were steadily developing. Various citrus groves were hedge-rowed. Valencia **oranges** were harvested. Gold Nugget **mandarins**, **tangelos**, **grapefruit**, and **lemon** harvests progressed. **Strawberry** and **blueberry** harvests were still underway. **Blackberry** development has been steady.

NUT CROPS

Some orchard floors were cleaned up and weed control continued where necessary. Irrigation was ongoing. **Almond**, **walnut**, and **pistachio** nut development continued to progress nicely. Small immature nuts continued to develop.

VEGETABLE CROPS

In Colusa, Sacramento, Solano, and Yolo Counties, the organic **asparagus** harvest finished and the organic cherry **tomato** harvest will begin at end of this month. Processing tomato harvest will begin in July. In San Mateo County, **greens**, **broccoli**, and **cauliflower** were harvested. **Brussels Sprouts** were planted. In Stanislaus County, sweet **potatoes** continued to be transplanted into other fields. **Garlic** continued to grow. In Tulare County, Bell **peppers**, tomatoes and other early summer vegetables were harvested and sold at local fruit stands.

LIVESTOCK

Rangeland and non-irrigated pasture were in poor to fair condition. With the warm and dry weather, non-irrigated pasture in the Central Valley continued to dry rapidly. Irrigated range was in good to excellent condition. Bees were active pollinating kiwi vineyards, melon, and sunflower fields. Sheep grazed on fallow fields and retired farmland. Some cattle received supplemental hay.

NOTICE: USDA NASS has changed the base temperature used to calculate growing degree days (found in the table below) from 60 °F to 50 °F.

CALIFORNIA CROP WEATHER – WEEK ENDING JUNE 12, 2022											
STATIONS	TEMPERATURE				GROWING DEGREE DAYS AT 50 °F BASE ¹		RAIN DAYS ²	PRECIPITATION ³			
	Average for Week Ending Jun 12, 2022	Departure from Normal ⁴	High	Low	This Year	Normal Year ⁴	This Season	This Week	This Season	Normal Season ⁴	Normal Year ⁴
					Jan 1 - Jun 12, 2022	Jan 1 - June 12, 2022	Oct 1 - Jun 12, 2022	Week Ending Jun 12, 2022	Oct 1 - Jun 12, 2022	Oct 1 - Jun 12	Oct 1 - Sept 30
-- Degrees Fahrenheit --				-- Number --		-- Days --	-- Inches of Precipitation --				
North Coast											
Eureka WFO	58	2	72	47	252	240	105	0.82	28.36	39.05	40.61
Ukiah	70	3	94	51	1,068	928	64	0.02	19.20	34.45	35.07
Santa Rosa	72	7	102	50	1,087	869	60	0.00	26.08	33.42	34.00
Napa State Hospital	70	6	95	51	936	833	48	0.00	17.97	20.03	20.36
Central Coast											
San Francisco	66	4	90	54	1,141	1,052	43	0.00	18.15	19.47	19.77
San Jose	72	6	95	55	1,446	1,239	32	0.00	7.29	13.27	13.58
Salinas	NA	NA	NA	NA	NA	1,004	NA	NA	NA	12.47	12.66
Monterey	65	5	82	52	1,116	904	40	0.01	10.64	16.09	16.36
Paso Robles	77	9	105	47	1,363	1,015	24	0.00	8.72	11.98	12.24
Sacramento Valley											
Redding	79	4	101	59	1,749	1,354	58	0.21	18.74	32.55	33.70
Red Bluff	80	5	102	56	1,732	1,368	46	0.47	12.50	22.63	23.25
Orland	NA	NA	NA	NA	NA	1,338	NA	NA	NA	20.90	21.52
Oroville	80	6	102	60	1,785	1,425	49	0.00	17.22	25.29	25.84
Marysville	79	6	103	56	1,581	1,316	41	0.00	8.40	19.79	20.21
Sacramento	78	7	101	55	1,500	1,230	42	0.00	13.99	17.71	18.10
San Joaquin Valley											
Stockton	78	5	104	56	1,623	1,459	36	0.00	9.80	13.33	13.53
Modesto	78	5	100	59	1,571	1,480	33	0.00	9.00	12.14	12.34
Merced Macready	79	6	103	57	1,620	1,343	28	0.00	7.45	11.71	11.87
Madera	NA	NA	NA	NA	NA	1,455	NA	NA	NA	10.70	10.86
Fresno	83	7	102	63	1,996	1,650	24	0.00	6.30	10.82	11.05
Lemoore	79	5	103	52	1,682	1,463	20	0.00	4.03	7.13	7.23
Visalia	79	5	101	56	1,743	1,446	27	0.00	7.34	10.20	10.37
Bakersfield	83	6	99	66	2,014	1,811	20	0.00	5.41	6.29	6.40
Cascade Sierra											
Alturas	61	3	87	32	194	192	61	0.55	7.38	10.47	11.72
Mount Shasta	64	4	87	41	372	286	76	0.11	18.63	36.09	37.86
Blue Canyon	64	4	79	47	464	228	65	0.97	65.00	61.27	62.80
Yosemite Valley	NA	NA	NA	NA	NA	444	NA	NA	NA	39.11	40.65
South Coast											
Santa Maria	64	3	84	49	1,014	1,045	25	0.00	7.80	13.18	13.42
Santa Barbara	64	2	72	54	1,322	1,140	27	0.00	10.52	17.11	17.38
Oxnard	64	1	70	59	1,419	1,429	25	0.00	11.61	12.80	13.05
Riverside	77	6	96	61	2,268	1,902	22	0.00	4.83	9.12	9.48
Los Angeles	67	1	73	63	1,982	1,747	25	0.00	10.11	12.05	12.33
San Diego	65	-1	71	61	1,683	1,958	28	0.00	6.10	9.56	9.87
Southeast Interior											
Bishop	78	7	103	50	1,085	870	12	0.00	4.76	4.41	4.87
Daggett	90	8	109	70	2,337	2,010	9	0.00	1.09	3.10	3.80
Lancaster	84	9	104	60	1,549	1,257	15	0.00	3.57	6.51	6.86
Thermal	89	4	113	68	3,004	2,870	6	0.00	0.19	2.38	2.98
Blythe	96	9	115	75	3,278	3,042	5	0.00	0.28	2.57	3.58
Imperial	92	7	113	74	3,077	2,917	2	0.00	0.06	1.94	2.39

¹ Previously labeled as growing degree hours. The column title was corrected in the Sept 27, 2021 report. Additionally, degree days were previously calculated using a base of 60 degrees. The base temperature was changed to 50 degrees in the April 4, 2022 report.

² Total number of days with precipitation events this season.

³ Rain or melted snow/ice.

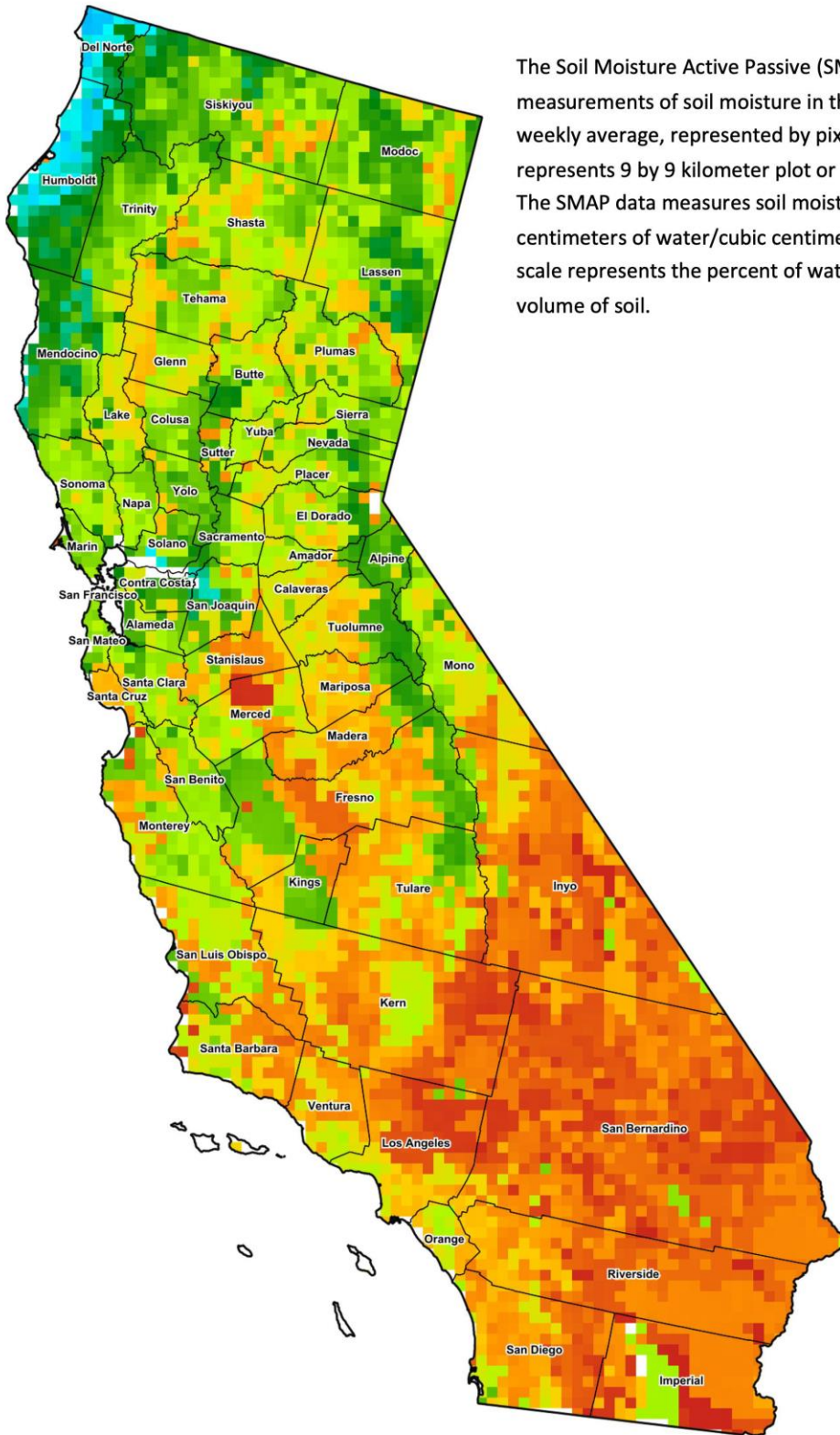
⁴ Normal periods 1990-2020 used in departure from normal calculations.

Data retrieved from NOAA and NWS. Calculated by USDA NASS.
All rights reserved.

Reservoir Data from the California Department of Water Resources

Reservoir	Capacity	June 12, 2022			This Date Last Year	
		Storage	Percent of Capacity	Percent of Average	Storage	Percent of Capacity
		<i>Acre Feet</i>	<i>Percent</i>	<i>Percent</i>	<i>Acre Feet</i>	<i>Percent</i>
Shasta Lake	4,547,300	1,809,662	40	49	1,887,073	41
Lake Oroville	3,537,400	1,864,267	53	67	1,270,038	36
Trinity Lake	2,443,800	734,436	30	38	1,222,175	50
New Melones Reservoir	2,413,000	828,490	35	55	1,313,541	55
San Luis Reservoir	2,057,200	872,343	43	68	803,881	39
Don Pedro Reservoir	4,547,300	1,348,737	66	82	1,307,538	64

Source: cdec.water.ca.gov/reportapp/javareports?name=DLYHYDRO



The Soil Moisture Active Passive (SMAP) provides measurements of soil moisture in the root zone as a weekly average, represented by pixels. Each pixel represents 9 by 9 kilometer plot or about 20,000 acres. The SMAP data measures soil moisture in cubic centimeters of water/cubic centimeters of soil. The scale represents the percent of water in a given volume of soil.



Drought Conditions from the U.S. Drought Monitor

Time	Percent of Land in Drought Rating						Drought Severity (DSCI)
	None	D0	D1	D2	D3	D4	
Current	0.00	0.21	2.31	37.67	48.22	11.59	369
Last Week	0.00	0.14	2.30	37.75	48.22	11.59	369
3 Months Ago	0.00	0.00	13.02	74.16	12.82	0.00	300
One Year Ago	0.00	0.00	5.25	9.55	51.88	33.32	413

The U.S. Drought Monitor is jointly produced by the National Drought Mitigation Center at the University of Nebraska-Lincoln, the United States Department of Agriculture, and the National Oceanic and Atmospheric Administration. droughtmonitor.unl.edu/CurrentMap/StateDroughtMonitor.aspx?CA