



# California Crop Progress & Condition

Cooperating with the California Department of Food and Agriculture  
Pacific Region • P.O. Box 1258 • Sacramento, CA 95812 • (916) 738-6600 • (855) 270-2722 FAX • [www.nass.usda.gov/ca](http://www.nass.usda.gov/ca)

**WEEK ENDING: May 29, 2022**  
**RELEASED: May 31, 2022**

**FREQUENCY: Weekly**  
**VOL. 43 NO. 9**

## WEATHER

Average lows for California ranged from 32 to 62 in the mountains, 45 to 61 along the coast, 45 to 76 in the desert, and 49 to 74 in the Central Valley. Average highs for the state ranged from 52 to 88 in the mountains, 56 to 100 along the coast, 73 to 105 in the desert, and 74 to 103 in the Central Valley. From the California Department of Water Resources (DWR), snowpack water content in the Northern Sierra was 2.20 inches compared to 0.40 inches this date last year; Central Sierra was 0.50 inches compared to 0.00 inches this date last year; Southern Sierra was 0.00 inches compared to 0.00 inches this date last year. California DWR CIMIS stations recorded 1,392 chill hours at Gerber; 1,294 chill hours at Williams; 1,371 chill hours at Holt; 1,635 chill hours at Merced; 1,347 chill hours at Fresno; and 1,128 chill hours at Arvin.

## FIELD CROPS

Planting of **sunflower** began in Sutter County. In the Sacramento Valley, harvesting of **wheat** and other grain crops began. Rice planting neared completion. Row crops were progressing well. In Stanislaus County, silage **corn** was being planted. Groundwork continued in preparation of summer crops. **Alfalfa** hay and silage were being harvested. In the San Joaquin Valley, **cotton** continued to make progress. The first irrigation began for **American Pima**. In Tulare County, **alfalfa** was being cut and baled. Other fields laid fallow before row crops was planted. Farmers began spreading fertilizer and tilling their fields in preparation for summer plantings. **Corn** was being irrigated and treated for pests. **Black-eyed beans** were still being planted. Cotton fields were being treated for pests.

## FRUIT CROPS

Irrigation and weed control efforts were ongoing. Early varieties of **peaches**, **nectarines**, **plums**, and **apricots** were harvested. Spring pruning of peach and nectarine trees continued. The **kiwifruit** bloom was complete. Immature kiwifruit were developing and increasing in size. **Apple** and **pear** development continued. **Grape** vineyards were setting fruit before summer and continued to be tied and irrigated. **Persimmon** trees and **pomegranates** were steadily developing. Valencia and Blood **oranges** were picked and packed. Gold Nugget **mandarins**, **tangelos**, **grapefruit**, and **lemon** harvests progressed. **Strawberry** harvest continued. **Blackberry** development has been steady.

## NUT CROPS

Some orchard floors were cleaned up and weed control continued where necessary. Nitrogen applications and irrigation took place. **Almond**, **walnut**, and **pistachio** nut development continued to progress nicely. Some walnuts orchards were removed and shredded. New almond orchards were planted in some areas. **Pecan** bloom was complete and small immature nuts continued to develop.

## VEGETABLE CROPS

**Tomatoes** were planted in Sutter County. In Stanislaus County, **sweet potato** nursery plants grew well as they continued to be transplanted into other fields. Tomatoes were planted, and groundwork preparation continued for **beans**, tomatoes, and **sweet corn**. **Garlic** continued to grow well. In Tulare County, **cucumbers**, **eggplant**, **fava beans**, garlic, **onions**, **peppers**, **squash**, sweet corn, **tomatillos**, and **zucchini** plants continued to grow.

## LIVESTOCK

Rangeland and non-irrigated pasture were in fair to good condition. With the warm and dry weather, non-irrigated pasture in the Central Valley has dried out rapidly. Irrigated range was in good to excellent condition. Sheep grazed on fallow fields and retired farmland. Some cattle received supplemental hay.

**NOTICE:** USDA NASS has changed the base temperature used to calculate growing degree days (found in the table below) from 60 °F to 50 °F.

CALIFORNIA CROP WEATHER – WEEK ENDING MAY 29, 2022											
STATIONS	TEMPERATURE				GROWING DEGREE DAYS AT 50 °F BASE <sup>1</sup>		RAIN DAYS <sup>2</sup>	PRECIPITATION <sup>3</sup>			
	Average for Week Ending May 29, 2022	Departure from Normal <sup>4</sup>	High	Low	This Year	Normal Year <sup>4</sup>	This Season	This Week	This Season	Normal Season <sup>4</sup>	Normal Year <sup>4</sup>
					Jan 1 - May 29, 2022	Jan 1 - May 29, 2022	Oct 1 - May 29, 2022	Week Ending May 29, 2022	Oct 1 - May 29, 2022	Oct 1 - May 29	Oct 1 - Sept 30
-- Degrees Fahrenheit --				-- Number --		-- Days --	-- Inches of Precipitation --				
<b>North Coast</b>											
Eureka WFO	53	-2	66	45	191	157	101	0.21	24.14	38.58	40.61
Ukiah	66	1	100	48	824	689	61	0.01	19.07	34.21	35.07
Santa Rosa	66	4	100	49	830	659	58	0.00	25.52	33.23	34.00
Napa State Hospital	65	3	93	46	689	633	46	0.00	17.73	19.88	20.36
<b>Central Coast</b>											
San Francisco	64	3	87	52	972	879	42	0.00	18.13	19.37	19.77
San Jose	69	5	93	53	1,171	1,008	32	0.00	7.30	13.16	13.58
Salinas	NA	NA	NA	NA	NA	843	NA	NA	NA	12.41	12.66
Monterey	62	4	79	48	949	768	39	0.00	10.63	15.98	16.36
Paso Robles	70	5	100	48	1,049	766	24	0.00	8.72	11.95	12.24
<b>Sacramento Valley</b>											
Redding	75	4	103	49	1,358	1,009	55	0.04	18.00	32.02	33.70
Red Bluff	76	5	103	54	1,370	1,030	43	0.00	11.98	22.31	23.25
Orland	NA	NA	NA	NA	NA	1,023	NA	NA	NA	20.61	21.52
Oroville	75	5	102	56	1,423	1,099	47	0.03	16.81	25.06	25.84
Marysville	74	5	103	54	1,207	1,005	40	0.00	8.21	19.58	20.21
Sacramento	73	5	100	51	1,156	937	41	0.00	13.76	17.57	18.10
<b>San Joaquin Valley</b>											
Stockton	73	3	103	53	1,258	1,146	35	0.00	9.75	13.24	13.53
Modesto	73	3	100	54	1,231	1,162	33	0.00	9.00	12.03	12.34
Merced Macready	75	5	103	57	1,237	1,030	28	0.00	7.45	11.61	11.87
Madera	74	4	101	53	1,184	1,132	21	0.00	2.28	10.57	10.86
Fresno	78	5	103	58	1,610	1,293	24	0.00	6.30	10.65	11.05
Lemoore	76	5	103	55	1,316	1,137	20	0.00	4.03	7.09	7.23
Visalia	74	4	99	56	1,401	1,120	26	0.00	7.23	10.10	10.37
Bakersfield	78	5	102	60	1,600	1,440	20	0.00	5.41	6.25	6.40
<b>Cascade Sierra</b>											
Alturas	55	0	85	32	77	83	60	0.18	6.85	9.99	11.72
Mount Shasta	59	2	88	39	225	150	72	0.03	18.35	35.39	37.86
Blue Canyon	60	4	79	39	333	98	62	0.07	62.90	60.26	62.80
Yosemite Valley	NA	NA	NA	NA	NA	260	NA	NA	NA	38.55	40.65
<b>South Coast</b>											
Santa Maria	60	0	75	46	877	892	25	0.00	7.81	13.14	13.42
Santa Barbara	61	0	80	50	1,119	974	26	0.01	10.54	17.02	17.38
Oxnard	61	-1	68	52	1,256	1,245	24	0.00	11.62	12.75	13.05
Riverside	69	0	88	53	1,945	1,604	22	0.00	4.83	9.09	9.48
Los Angeles	64	0	70	56	1,770	1,528	26	0.00	10.18	11.99	12.33
San Diego	62	-3	67	55	1,499	1,728	28	0.00	6.10	9.52	9.87
<b>Southeast Interior</b>											
Bishop	71	4	96	45	732	588	12	0.00	4.76	4.34	4.87
Daggett	81	4	103	62	1,847	1,574	9	0.00	1.09	3.09	3.80
Lancaster	74	3	98	55	1,145	921	15	0.00	3.59	6.49	6.86
Thermal	80	-1	102	58	2,476	2,390	6	0.00	0.19	2.38	2.98
Blythe	87	4	105	67	2,704	2,526	5	0.00	0.28	2.57	3.58
Imperial	83	2	103	65	2,542	2,435	2	0.00	0.06	1.94	2.39

<sup>1</sup> Previously labeled as growing degree hours. The column title was corrected in the Sept 27, 2021 report. Additionally, degree days were previously calculated using a base of 60 degrees. The base temperature was changed to 50 degrees in the April 4, 2022 report.

<sup>2</sup> Total number of days with precipitation events this season.

<sup>3</sup> Rain or melted snow/ice.

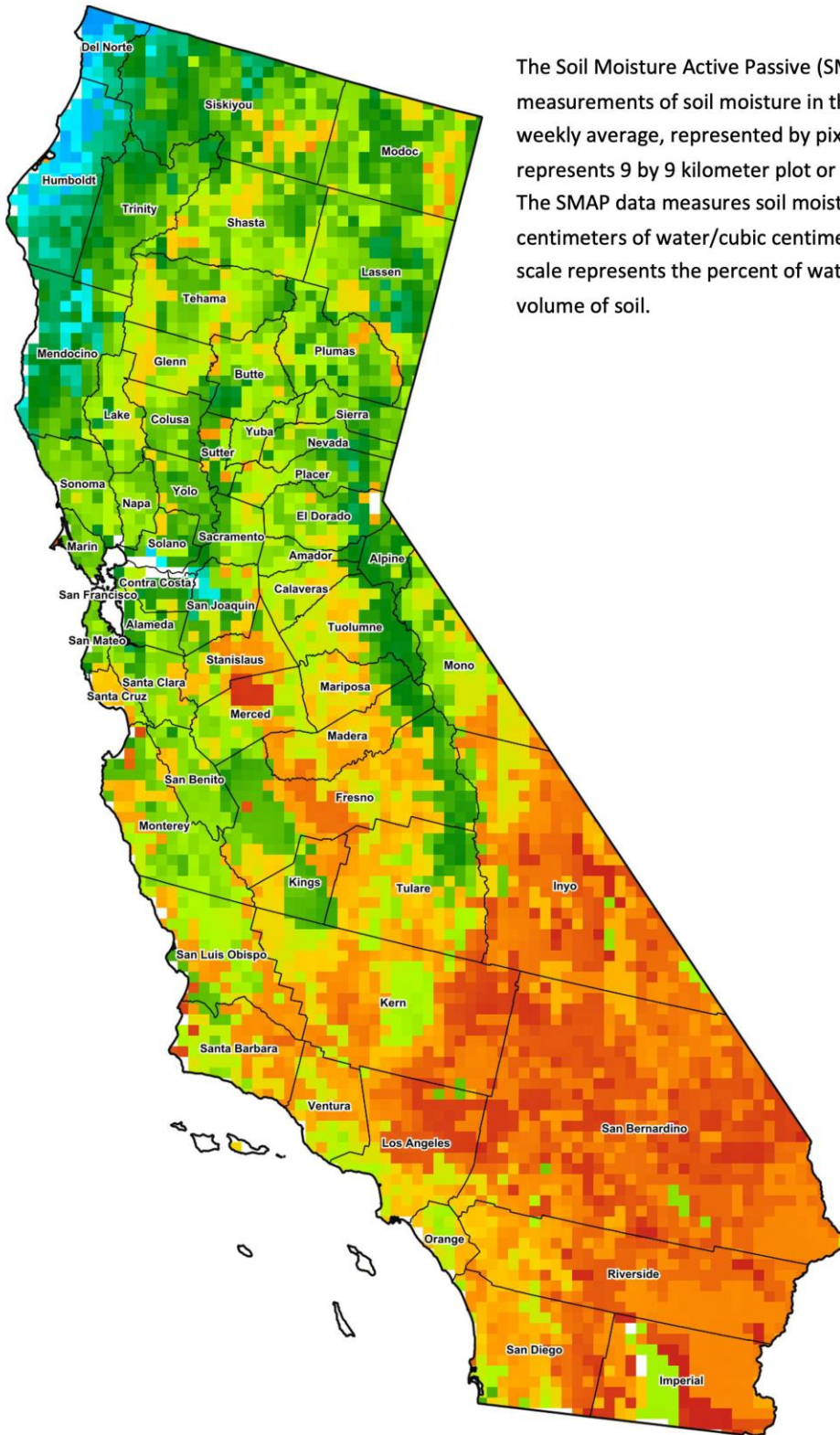
<sup>4</sup> Normal periods 1990-2020 used in departure from normal calculations.

Data retrieved from NOAA and NWS. Calculated by USDA NASS.  
All rights reserved.

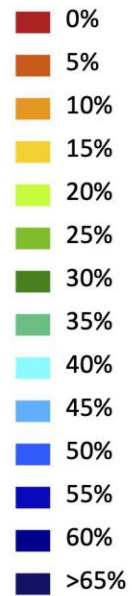
### Reservoir Data from the California Department of Water Resources

Reservoir	Capacity	May 29, 2022			This Date Last Year	
		Storage	Percent of Capacity	Percent of Average	Storage	Percent of Capacity
	<i>Acre Feet</i>	<i>Acre Feet</i>	<i>Percent</i>	<i>Percent</i>	<i>Acre Feet</i>	<i>Percent</i>
Shasta Lake	4,547,300	1,815,936	40	48	1,994,453	44
Lake Oroville	3,537,400	1,918,475	54	68	1,352,442	38
Trinity Lake	2,443,800	739,869	30	38	1,264,334	52
New Melones Reservoir	2,413,000	868,035	36	58	1,368,423	57
San Luis Reservoir	2,057,200	922,046	45	65	893,269	44
Don Pedro Reservoir	4,547,300	1,348,358	66	83	1,345,897	66

Source: [cdec.water.ca.gov/reportapp/javareports?name=DLYHYDRO](https://cdec.water.ca.gov/reportapp/javareports?name=DLYHYDRO)



Percent Soil Moisture



**Drought Conditions from the U.S. Drought Monitor**

Time	Percent of Land in Drought Rating						Drought Severity (DSCI)
	None	D0	D1	D2	D3	D4	
Current	0.00	0.14	2.30	37.75	48.22	11.59	369
Last Week	0.00	0.14	4.73	35.32	59.64	0.18	355
3 Months Ago	0.00	0.00	31.23	62.07	6.70	0.00	275
One Year Ago	0.00	0.00	5.39	20.15	48.41	26.04	395

The U.S. Drought Monitor is jointly produced by the National Drought Mitigation Center at the University of Nebraska-Lincoln, the United States Department of Agriculture, and the National Oceanic and Atmospheric Administration.  
[droughtmonitor.unl.edu/CurrentMap/StateDroughtMonitor.aspx?CA](https://droughtmonitor.unl.edu/CurrentMap/StateDroughtMonitor.aspx?CA)