



California Crop Progress & Condition

Cooperating with the California Department of Food and Agriculture
Pacific Region • P.O. Box 1258 • Sacramento, CA 95812 • (916) 738-6600 • (855) 270-2722 FAX • www.nass.usda.gov/ca

WEEK ENDING: May 22, 2022
RELEASED: May 23, 2022

FREQUENCY: Weekly
VOL. 43 NO. 8

WEATHER

Average lows for California ranged from 27 to 60 in the mountains, 34 to 77 in the desert, 40 to 60 along the coast, and 44 to 69 in the Central Valley. Average highs for the state ranged from 55 to 97 along the coast, 59 to 78 in the mountains, 70 to 104 in the desert, and 79 to 99 in the Central Valley. From the California Department of Water Resources (DWR), snowpack water content in the Northern Sierra was 2.10 inches compared to 0.60 inches this date last year; Central Sierra was 1.60 inches compared to 0.10 inches this date last year; Southern Sierra was 0.40 inches compared to 0.00 inches this date last year. California DWR CIMIS stations recorded 1,392 chill hours at Gerber; 1,294 chill hours at Williams; 1,371 chill hours at Holt; 1,635 chill hours at Merced; 1,347 chill hours at Fresno; and 1,128 chill hours at Arvin.

FIELD CROPS

In the Sacramento Valley, **rice** began to emerge, and planting was on schedule. In the San Joaquin Valley, warmer temperatures aided the **cotton** growth. In Tulare County, more acreage of silage **corn** was being planted by local dairy farmers. Corn was being irrigated and treated for pests. **Black-eyed beans** were still being planted. In San Luis Obispo County, **hay** was being baled. Lack of rain has affected production. The **wheat** crop was drying down with the help of windy, hot weather. **Oats** were chopped.

FRUIT CROPS

Harvest of early stone fruit varieties continued. Irrigation and weed control efforts were ongoing. High winds negatively affected blossoms on some vines and trees. **Cherry** trees were rich with color. **Apple**, **pear**, and **plum** development continued. A few **prune** orchards were thinned. **Peaches**, **nectarines**, and **apricots** were harvested. **Grape** vineyards were thinned of leaves and treated with pesticides. **Persimmon** trees and **pomegranates** were steadily developing. Valencia **oranges**, **tangelo**, **grapefruit**, and **lemon** harvests progressed. **Strawberry** harvest continued. **Blackberry** development has been steady. **Blueberry** nursery stock was planted in Tulare County.

NUT CROPS

Some orchard floors were cleaned up and weed control continued where necessary. Nitrogen applications and irrigation took place. **Almond**, **walnut**, and **pistachio** nut development was still progressing well. The walnut canopies continued to become denser with leaves despite the high winds.

VEGETABLE CROPS

In Sacramento, Solano, and Yolo counties, processing **tomato** transplanting neared completion. Organic **asparagus** harvest neared completion. The projected cherry tomato harvest date moved closer to the middle of June. **Sweet corn** was coming up in Stanislaus County. In Tulare County, some **lettuce** varieties were made available. **Squash** flowers developed into fruit, and **bell peppers** saw significant growth. Summer vegetables continued to be planted.

LIVESTOCK

Rangeland and non-irrigated pasture were in fair to good condition. Irrigated range was in good to excellent condition. Sheep grazed on fallow fields and retired farmland. Some cattle received supplemental alfalfa and oat hay. Bee hives were moved out of citrus groves.

NOTICE: USDA NASS has changed the base temperature used to calculate growing degree days (found in the table below) from 60 °F to 50 °F.

CALIFORNIA CROP WEATHER – WEEK ENDING MAY 22, 2022											
STATIONS	TEMPERATURE				GROWING DEGREE DAYS AT 50 °F BASE ¹		RAIN DAYS ²	PRECIPITATION ³			
	Average for Week Ending May 22, 2022	Departure from Normal ⁴	High	Low	This Year	Normal Year ⁴	This Season	This Week	This Season	Normal Season ⁴	Normal Year ⁴
					Jan 1 - May 22, 2022	Jan 1 - May 22, 2022	Oct 1 - May 22, 2022	Week Ending May 22, 2022	Oct 1 - May 22, 2022	Oct 1 - May 22	Oct 1 - Sept 30
-- Degrees Fahrenheit --				-- Number --		-- Days --	-- Inches of Precipitation --				
North Coast											
Eureka WFO	53	-1	66	40	161	122	100	0.03	23.93	38.27	40.61
Ukiah	65	1	86	45	706	582	60	0.00	19.06	34.00	35.07
Santa Rosa	66	5	95	43	714	568	58	0.00	25.52	33.00	34.00
Napa State Hospital	65	4	91	42	585	545	46	0.00	17.73	19.73	20.36
Central Coast											
San Francisco	60	0	77	50	869	800	42	0.00	18.13	19.28	19.77
San Jose	66	3	86	50	1,036	904	32	0.00	7.30	13.10	13.58
Salinas	NA	NA	NA	NA	NA	767	NA	NA	NA	12.34	12.66
Monterey	57	-1	70	45	863	705	39	0.00	10.63	15.88	16.36
Paso Robles	68	4	97	44	908	656	24	0.00	8.72	11.90	12.24
Sacramento Valley											
Redding	74	5	95	52	1,177	858	53	0.00	17.96	31.62	33.70
Red Bluff	74	5	97	56	1,185	880	43	0.00	11.98	22.05	23.25
Orland	NA	NA	NA	NA	NA	882	NA	NA	NA	20.38	21.52
Oroville	74	5	97	55	1,249	954	46	0.00	16.78	24.84	25.84
Marysville	73	5	99	51	1,039	867	40	0.00	8.21	19.41	20.21
Sacramento	72	5	99	49	996	806	41	0.00	13.76	17.46	18.10
San Joaquin Valley											
Stockton	72	4	97	50	1,095	1,004	35	0.00	9.75	13.13	13.53
Modesto	71	2	94	50	1,067	1,019	33	0.00	9.00	11.89	12.34
Merced Macready	72	4	95	47	1,062	888	28	0.00	7.45	11.51	11.87
Madera	71	2	93	47	1,014	987	21	0.00	2.28	10.47	10.86
Fresno	75	4	95	56	1,413	1,132	24	0.00	6.30	10.55	11.05
Lemoore	72	2	97	46	1,131	987	20	0.00	4.03	7.03	7.23
Visalia	71	2	91	44	1,216	974	26	0.00	7.23	10.04	10.37
Bakersfield	75	3	94	56	1,401	1,272	20	0.00	5.41	6.21	6.40
Cascade Sierra											
Alturas	50	-3	76	27	40	44	58	0.00	6.67	9.71	11.72
Mount Shasta	57	1	78	35	155	97	71	0.00	18.32	34.90	37.86
Blue Canyon	58	4	77	38	256	53	60	0.00	62.83	59.44	62.80
Yosemite Valley	NA	NA	NA	NA	NA	187	NA	NA	NA	38.05	40.65
South Coast											
Santa Maria	58	-1	74	46	801	822	25	0.00	7.81	13.09	13.42
Santa Barbara	59	-1	69	48	1,038	897	25	0.02	10.53	16.95	17.38
Oxnard	59	-2	67	50	1,179	1,160	24	0.00	11.62	12.70	13.05
Riverside	67	-1	84	55	1,813	1,467	22	0.00	4.83	9.06	9.48
Los Angeles	63	-1	69	57	1,665	1,424	26	0.00	10.18	11.95	12.33
San Diego	62	-3	67	57	1,408	1,616	28	0.02	6.10	9.48	9.87
Southeast Interior											
Bishop	67	3	96	34	582	469	12	0.00	4.76	4.29	4.87
Daggett	79	4	102	56	1,624	1,379	9	0.00	1.09	3.08	3.80
Lancaster	74	6	97	51	974	774	15	0.00	3.59	6.47	6.86
Thermal	82	2	104	60	2,261	2,167	6	0.00	0.19	2.38	2.98
Blythe	84	3	104	66	2,443	2,290	5	0.00	0.28	2.56	3.58
Imperial	82	3	103	63	2,307	2,215	2	0.00	0.06	1.92	2.39

¹ Previously labeled as growing degree hours. The column title was corrected in the Sept 27, 2021 report. Additionally, degree days were previously calculated using a base of 60 degrees. The base temperature was changed to 50 degrees in the April 4, 2022 report.

² Total number of days with precipitation events this season.

³ Rain or melted snow/ice.

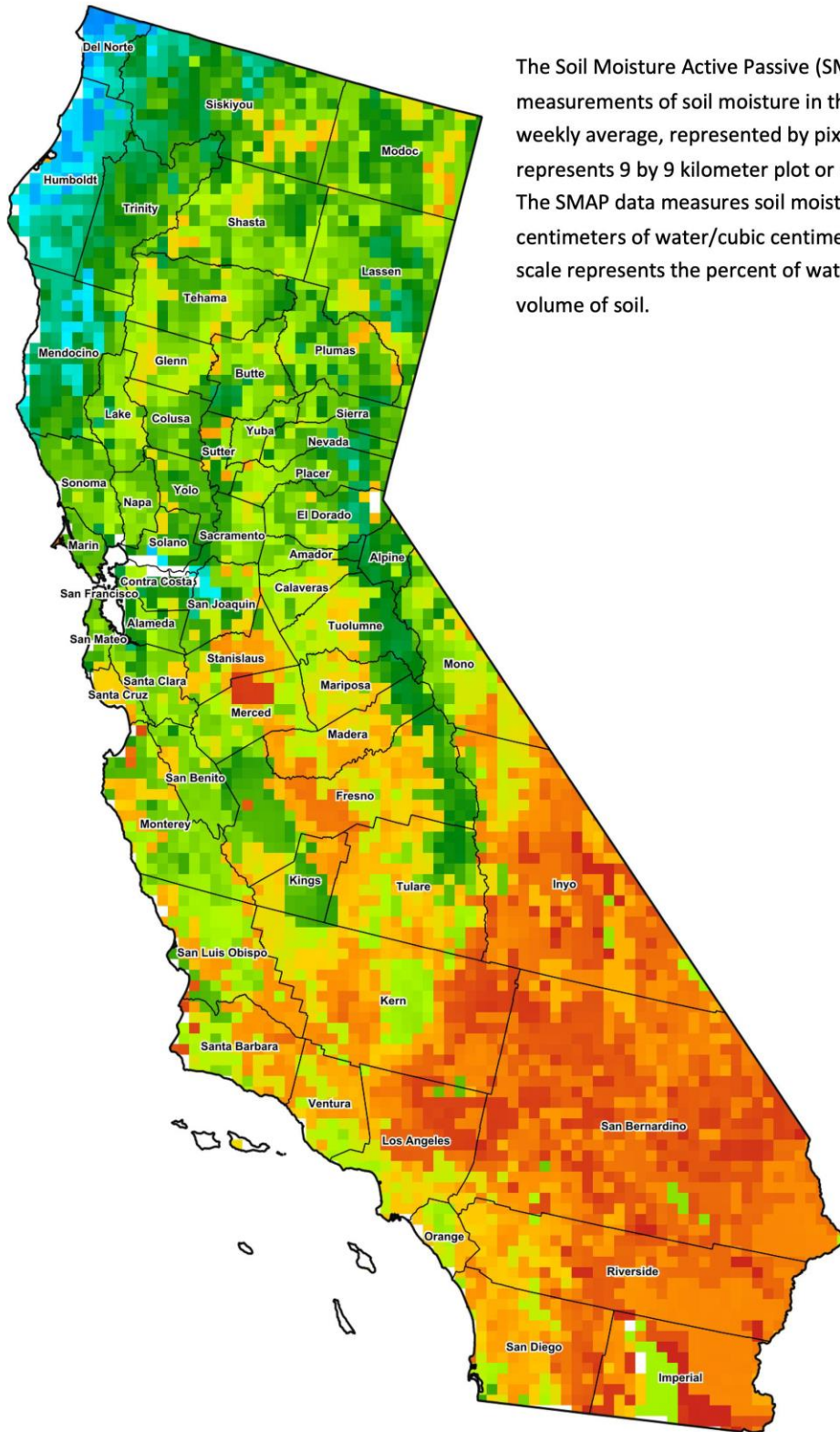
⁴ Normal periods 1990-2020 used in departure from normal calculations.

Data retrieved from NOAA and NWS. Calculated by USDA NASS.
All rights reserved.

Reservoir Data from the California Department of Water Resources

Reservoir	Capacity	May 22, 2022			This Date Last Year	
		Storage	Percent of Capacity	Percent of Average	Storage	Percent of Capacity
	<i>Acre Feet</i>	<i>Acre Feet</i>	<i>Percent</i>	<i>Percent</i>	<i>Acre Feet</i>	<i>Percent</i>
Shasta Lake	4,547,300	1,825,609	40	48	2,059,048	45
Lake Oroville	3,537,400	1,939,276	55	69	1,389,323	39
Trinity Lake	2,443,800	744,814	30	39	1,282,102	52
New Melones Reservoir	2,413,000	890,152	37	60	1,389,860	58
San Luis Reservoir	2,057,200	936,206	46	63	932,097	46
Don Pedro Reservoir	4,547,300	1,340,231	66	83	1,363,006	67

Source: cdec.water.ca.gov/reportapp/javareports?name=DLYHYDRO



Drought Conditions from the U.S. Drought Monitor

Time	Percent of Land in Drought Rating						Drought Severity (DSCI)
	None	D0	D1	D2	D3	D4	
Current	0.00	0.14	4.73	35.32	59.64	0.18	355
Last Week	0.00	0.14	4.73	35.32	59.81	0.00	355
3 Months Ago	0.00	0.43	33.19	65.00	1.39	0.00	267
One Year Ago	0.00	0.00	5.69	20.98	57.42	15.91	384

The U.S. Drought Monitor is jointly produced by the National Drought Mitigation Center at the University of Nebraska-Lincoln, the United States Department of Agriculture, and the National Oceanic and Atmospheric Administration. droughtmonitor.unl.edu/CurrentMap/StateDroughtMonitor.aspx?CA