



# California Crop Progress & Condition

Cooperating with the California Department of Food and Agriculture  
Pacific Region • P.O. Box 1258 • Sacramento, CA 95812 • (916) 738-6600 • (855) 270-2722 FAX • [www.nass.usda.gov/ca](http://www.nass.usda.gov/ca)

**WEEK ENDING: May 15, 2022**  
**RELEASED: May 16, 2022**

**FREQUENCY: Weekly**  
**VOL. 43 NO. 7**

## WEATHER

Average lows for California ranged from 14 to 55 in the mountains, 25 to 67 in the desert, 32 to 62 along the coast, and 35 to 67 in the Central Valley. Average highs for the state ranged from 37 to 79 in the mountains, 52 to 97 along the coast, 57 to 106 in the desert, and 61 to 95 in the Central Valley. From the California Department of Water Resources (DWR), snowpack water content in the Northern Sierra was 3.20 inches compared to 0.80 inches this date last year; Central Sierra was 3.50 inches compared to 0.50 inches this date last year; Southern Sierra was 1.20 inches compared to 0.30 inches this date last year. California DWR CIMIS stations recorded 1,392 chill hours at Gerber; 1,294 chill hours at Williams; 1,369 chill hours at Holt; 1,633 chill hours at Merced; 1,347 chill hours at Fresno; and 1,128 chill hours at Arvin.

## FIELD CROPS

In the Sacramento Valley, **rice** continued to be planted. Row crops were being irrigated, cultivated, and fertilized. In Stanislaus County, weeds were sprayed for various crops. **Alfalfa**, **wheat**, and **oat** were being harvested. **Corn** continued to be harvested in Riverside County. In the San Joaquin Valley, cooler temperatures slowed **cotton** crop development. In Tulare County, alfalfa was being swathed, raked, and baled. Winter grain fields that have been harvested for silage or hay were being fertilized, tilled, and planted with corn or cotton. Corn was growing steadily.

## FRUIT CROPS

Harvest of early stone fruit varieties were ongoing. **Cherry** harvest continued. **Apples**, **pears**, and **plums** continued to develop. **Apricot** harvest began. Peaches and nectarines were harvested. **Grape** vineyards were thinned of leaves and vines were tied. **Persimmon** trees were in full bloom. **Pomegranates** were steadily developing. Valencia **oranges**, **tangelo**, **grapefruit**, and **lemon** harvests continued. Navel orange harvest began to slow down due to high temperatures. **Mandarin** groves remained netted to prevent cross pollination. **Strawberry** quality is favorable and **blueberry** harvest continued.

## NUT CROPS

Some orchard floors were cleaned up and weed control continued where necessary. **Almond**, **walnut**, and **pistachio** nut development was progressing nicely. Walnut canopies were becoming much denser with leaves.

## VEGETABLE CROPS

In Colusa, Sacramento, Solano, and Yolo counties, **asparagus** harvest neared completion. **Cherry tomato** harvest moved closer to a middle of June start. In Stanislaus County, **sweet potato** plantings continued. In Tulare County, summer vegetables continued to be planted. **Onions**, **Fava beans**, **zucchini squash**, **eggplant**, and **garlic** continued to grow. Leaf lettuce was picked and sold at local stands. Onions were available for harvest.

## LIVESTOCK

Rangeland and non-irrigated pasture were in fair to good condition. High temperatures dried non-irrigated grasses and forbs, reducing available forage. Irrigated range was in good to excellent condition. Sheep grazed on fallow fields and retired farmland. Some cattle received supplemental alfalfa and oat hay.

**NOTICE:** USDA NASS has changed the base temperature used to calculate growing degree days (found in the table below) from 60 °F to 50 °F.

CALIFORNIA CROP WEATHER – WEEK ENDING MAY 15, 2022											
STATIONS	TEMPERATURE				GROWING DEGREE DAYS AT 50 °F BASE <sup>1</sup>		RAIN DAYS <sup>2</sup>	PRECIPITATION <sup>3</sup>			
	Average for Week Ending May 15, 2022	Departure from Normal <sup>4</sup>	High	Low	This Year	Normal Year <sup>4</sup>	This Season	This Week	This Season	Normal Season <sup>4</sup>	Normal Year <sup>4</sup>
					Jan 1 - May 15, 2022	Jan 1 - May 15, 2022	Oct 1 - May 15, 2022	Week Ending May 15, 2022	Oct 1 - May 15, 2022	Oct 1 - May 15	Oct 1 - Sept 30
-- Degrees Fahrenheit --				-- Number --		-- Days --	-- Inches of Precipitation --				
<b>North Coast</b>											
Eureka WFO	52	-1	62	36	136	90	98	0.53	24.14	37.92	40.61
Ukiah	56	-6	84	36	600	484	60	0.03	19.06	33.77	35.07
Santa Rosa	56	-4	86	32	603	487	58	0.06	25.52	32.73	34.00
Napa State Hospital	57	-3	82	32	476	465	46	0.00	17.73	19.56	20.36
<b>Central Coast</b>											
San Francisco	57	-3	70	47	792	725	42	0.00	18.13	19.18	19.77
San Jose	59	-3	81	41	921	807	32	0.00	7.30	13.02	13.58
Salinas	NA	NA	NA	NA	NA	697	NA	NA	NA	12.25	12.66
Monterey	56	-1	71	44	807	647	39	0.00	10.63	15.77	16.36
Paso Robles	61	-2	93	37	780	554	24	0.00	8.72	11.84	12.24
<b>Sacramento Valley</b>											
Redding	61	-6	92	37	1,006	721	53	0.07	17.96	31.20	33.70
Red Bluff	62	-5	91	38	1,017	744	43	0.05	11.98	21.75	23.25
Orland	NA	NA	NA	NA	NA	753	NA	NA	NA	20.10	21.52
Oroville	63	-4	93	43	1,079	819	46	0.40	16.78	24.60	25.84
Marysville	62	-4	95	35	873	738	40	0.04	8.21	19.20	20.21
Sacramento	61	-4	90	37	839	684	41	0.09	13.76	17.32	18.10
<b>San Joaquin Valley</b>											
Stockton	62	-5	91	37	934	873	35	0.00	9.75	13.01	13.53
Modesto	62	-5	88	42	913	886	33	0.00	9.00	11.75	12.34
Merced Macready	63	-4	93	40	907	758	28	0.00	7.45	11.41	11.87
Madera	62	-5	94	37	867	851	21	0.00	2.28	10.38	10.86
Fresno	65	-4	94	45	1,238	982	24	0.00	6.30	10.48	11.05
Lemoore	62	-6	95	36	977	847	20	0.00	4.03	6.95	7.23
Visalia	64	-3	92	41	1,071	839	26	0.00	7.23	9.97	10.37
Bakersfield	64	-6	92	43	1,224	1,115	20	0.00	5.41	6.16	6.40
<b>Cascade Sierra</b>											
Alturas	44	-8	78	14	29	17	58	0.14	6.67	9.43	11.72
Mount Shasta	48	-6	79	22	104	53	71	0.31	18.32	34.41	37.86
Blue Canyon	45	-7	71	25	193	21	60	0.74	62.83	58.54	62.80
Yosemite Valley	NA	NA	NA	NA	NA	127	NA	NA	NA	37.54	40.65
<b>South Coast</b>											
Santa Maria	56	-3	86	37	740	752	25	0.00	7.81	13.02	13.42
Santa Barbara	62	2	81	43	971	820	24	0.00	10.51	16.87	17.38
Oxnard	59	-2	81	43	1,110	1,076	24	0.00	11.62	12.63	13.05
Riverside	68	1	97	45	1,689	1,337	22	0.00	4.83	9.03	9.48
Los Angeles	64	1	81	51	1,573	1,326	26	0.00	10.18	11.89	12.33
San Diego	63	-2	81	49	1,325	1,511	27	0.00	6.08	9.42	9.87
<b>Southeast Interior</b>											
Bishop	55	-7	93	25	464	364	12	0.00	4.76	4.23	4.87
Daggett	67	-6	98	45	1,418	1,199	9	0.00	1.09	3.07	3.80
Lancaster	61	-5	93	37	803	641	15	0.00	3.59	6.45	6.86
Thermal	75	-3	105	51	2,036	1,956	6	0.00	0.19	2.38	2.98
Blythe	77	-2	106	56	2,201	2,068	5	0.00	0.28	2.55	3.58
Imperial	75	-2	106	49	2,081	2,009	2	0.00	0.06	1.91	2.39

<sup>1</sup> Previously labeled as growing degree hours. The column title was corrected in the Sept 27, 2021 report. Additionally, degree days were previously calculated using a base of 60 degrees. The base temperature was changed to 50 degrees in the April 4, 2022 report.

<sup>2</sup> Total number of days with precipitation events this season.

<sup>3</sup> Rain or melted snow/ice.

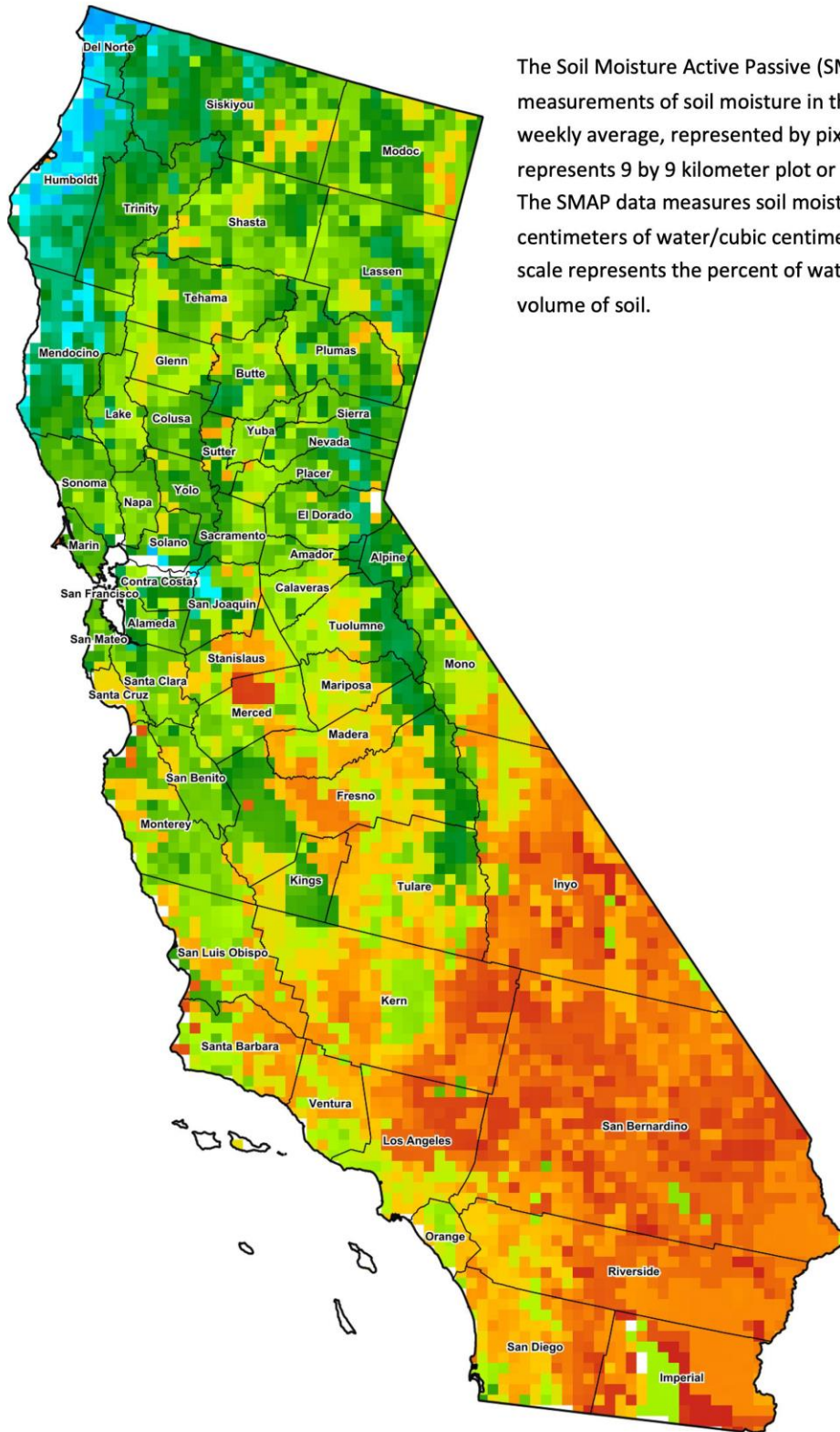
<sup>4</sup> Normal periods 1990-2020 used in departure from normal calculations.

Data retrieved from NOAA and NWS. Calculated by USDA NASS.  
All rights reserved.

### Reservoir Data from the California Department of Water Resources

Reservoir	Capacity	May 15, 2022			This Date Last Year	
		Storage	Percent of Capacity	Percent of Average	Storage	Percent of Capacity
		<i>Acre Feet</i>	<i>Percent</i>	<i>Percent</i>	<i>Acre Feet</i>	<i>Percent</i>
Shasta Lake	4,547,300	1,823,997	40	48	2,143,779	47
Lake Oroville	3,537,400	1,941,551	55	70	1,427,639	40
Trinity Lake	2,443,800	749,334	31	39	1,297,713	53
New Melones Reservoir	2,413,000	902,525	38	60	1,414,555	59
San Luis Reservoir	2,057,200	941,596	46	61	968,108	47
Don Pedro Reservoir	4,547,300	1,319,609	65	83	1,373,543	68

Source: [cdec.water.ca.gov/reportapp/javareports?name=DLYHYDRO](http://cdec.water.ca.gov/reportapp/javareports?name=DLYHYDRO)



The Soil Moisture Active Passive (SMAP) provides measurements of soil moisture in the root zone as a weekly average, represented by pixels. Each pixel represents 9 by 9 kilometer plot or about 20,000 acres. The SMAP data measures soil moisture in cubic centimeters of water/cubic centimeters of soil. The scale represents the percent of water in a given volume of soil.



**Drought Conditions from the U.S. Drought Monitor**

Time	Percent of Land in Drought Rating						Drought Severity (DSCI)
	None	D0	D1	D2	D3	D4	
Current	0.00	0.14	4.73	35.32	59.81	0.00	355
Last Week	0.00	0.00	4.82	54.67	40.51	0.00	336
3 Months Ago	0.00	0.75	32.86	65.00	1.39	0.00	267
One Year Ago	0.00	0.00	5.69	20.98	59.81	13.53	381

The U.S. Drought Monitor is jointly produced by the National Drought Mitigation Center at the University of Nebraska-Lincoln, the United States Department of Agriculture, and the National Oceanic and Atmospheric Administration. [droughtmonitor.unl.edu/CurrentMap/StateDroughtMonitor.aspx?CA](http://droughtmonitor.unl.edu/CurrentMap/StateDroughtMonitor.aspx?CA)