



California Crop Progress & Condition

Cooperating with the California Department of Food and Agriculture
Pacific Region • P.O. Box 1258 • Sacramento, CA 95812 • (916) 738-6600 • (855) 270-2722 FAX • www.nass.usda.gov/ca

WEEK ENDING: April 17, 2022
RELEASED: April 18, 2022

FREQUENCY: Weekly
VOL. 43 NO. 3

WEATHER

Average lows for California ranged from 17 to 37 in the mountains, 20 to 64 in the desert, 30 to 59 along the coast, and 31 to 57 in the Central Valley. Average highs for the state ranged from 35 to 61 in the mountains, 49 to 80 along the coast, 56 to 79 in the Central Valley, and 57 to 92 in the desert. From the California Department of Water Resources (DWR), snowpack water content in the Northern Sierra was 6.50 inches compared to 9.20 inches this date last year; Central Sierra was 9.70 inches compared to 12.10 inches this date last year; Southern Sierra was 5.50 inches compared to 4.50 inches this date last year. California DWR CIMIS stations recorded 1,325 chill hours at Gerber; 1,237 chill hours at Williams; 1,309 chill hours at Holt; 1,583 chill hours at Merced; 1,329 chill hours at Fresno; and 1,124 chill hours at Arvin.

FIELD CROPS

In San Joaquin Valley, **cotton** continued to be planted and some cotton had germinated. In Tulare County, many winter grains were in different stages of growth ranging from midway to full maturity and began to be harvested for silage and hay. Later planted fields were still being treated for weed control. **Corn** continued to be planted, with some starting to emerge. **Rice** ground continued to be worked ahead of planting.

FRUIT CROPS

Some stone fruit orchards continued to bloom. **Cherries** were steadily maturing with visible color change and increased sizes. **Apricots, apples, pears, peaches, plums, nectarines,** and **prunes** were leafing out. **Grape** and **kiwi** development continued and pruning took place. **Persimmon, pomegranate,** and **quince** trees were budding. **Olive** development was ongoing. Valencia and Navel **oranges, tangelo, lemon,** and **mandarin** harvests were underway. Some mandarins were covered with netting to prevent cross pollination. **Avocados** were steadily blooming. **Strawberry** harvest continued. **Blueberry** and **blackberry** maturation continued.

NUT CROPS

Almond bloom was nearly complete with lingering concerns of a decreased crop due to frost. **Walnut** and **pistachio** leaf out continued.

VEGETABLE CROPS

In Tulare County, **onions, sweet corn, eggplants,** and **fava beans** continued to grow and develop. **Leaf lettuce** harvest continued, while fields were prepped and planted for summer vegetables. In Imperial and Riverside Counties, University of California Cooperative Extension faculty continued to develop research and extension programs focused on pest, disease management, and plant nutrient management in vegetable agroecosystems. Watermelons were planted in Stanislaus County.

LIVESTOCK

Rangeland and non-irrigated pasture were in fair to good condition. Irrigated range was in good to excellent condition. Sheep grazed on fallow fields and retired farmland. Some beehives were placed near citrus groves. Cattle grazed on lower elevation range.

NOTICE: USDA NASS has changed the base temperature used to calculate growing degree days (found in the table below) from 60 °F to 50 °F.

CALIFORNIA CROP WEATHER – WEEK ENDING APRIL 17, 2022											
STATIONS	TEMPERATURE				GROWING DEGREE DAYS AT 50 °F BASE ¹		RAIN DAYS ²	PRECIPITATION ³			
	Average for Week Ending Apr 17, 2022	Departure from Normal ⁴	High	Low	This Year	Normal Year ⁴	This Season	This Week	This Season	Normal Season ⁴	Normal Year ⁴
					Jan 1 - Apr 17, 2022	Jan 1 - Apr 17, 2022	Oct 1 - Apr 3, 2022	Week Ending Apr 17, 2022	Oct 1 - Apr 17, 2022	Oct 1 - Apr 17	Oct 1 - Sept 30
-- Degrees Fahrenheit --				-- Number --		-- Days --	-- Inches of Precipitation --				
North Coast											
Eureka WFO	45	-6	53	33	76	15	83	2.48	21.14	35.75	40.61
Ukiah	49	-6	68	33	405	204	51	1.80	17.78	32.31	35.07
Santa Rosa	50	-6	66	32	398	243	52	1.37	24.74	31.38	34.00
Napa State Hospital	50	-6	64	30	279	224	42	0.68	17.22	18.73	20.36
Central Coast											
San Francisco	53	-4	64	45	560	471	39	0.54	17.70	18.51	19.77
San Jose	55	-4	72	41	635	489	28	0.12	7.13	12.46	13.58
Salinas	56	-1	72	36	743	462	27	0.04	6.91	11.77	12.66
Monterey	54	-1	65	41	611	451	37	0.37	10.41	15.21	16.36
Paso Robles	54	-3	78	31	473	254	23	0.04	8.54	11.49	12.24
Sacramento Valley											
Redding	53	-6	71	31	679	324	47	1.64	17.09	29.46	33.70
Red Bluff	54	-5	72	34	665	343	39	0.63	11.71	20.57	23.25
Orland	54	-5	75	35	742	359	37	0.00	10.90	19.06	21.52
Oroville	55	-5	74	32	687	402	40	0.67	15.77	23.48	25.84
Marysville	55	-4	73	32	514	344	35	0.56	7.73	18.25	20.21
Sacramento	54	-4	72	33	500	313	35	0.65	13.60	16.60	18.10
San Joaquin Valley											
Stockton	57	-4	75	36	573	454	32	0.16	9.19	12.33	13.53
Modesto	56	-5	75	36	557	464	31	0.03	8.80	11.08	12.34
Merced Macready	57	-2	77	37	527	358	26	0.36	7.06	10.71	11.87
Madera	55	-5	76	34	511	428	20	0.27	2.09	9.83	10.86
Fresno	59	-3	77	40	779	512	22	0.09	6.09	9.91	11.05
Lemoore	58	-2	79	36	588	412	19	0.00	4.01	6.55	7.23
Visalia	58	-2	77	40	659	424	25	0.00	7.12	9.44	10.37
Bakersfield	59	-4	77	39	763	618	18	0.00	5.02	5.81	6.40
Cascade Sierra											
Alturas	36	-8	61	19	4	0	46	0.44	5.26	8.19	11.72
Mount Shasta	40	-6	59	24	52	0	59	0.93	16.26	32.50	37.86
Blue Canyon	35	-9	53	21	144	0	52	5.73	57.90	54.49	62.80
Yosemite Valley	35	-15	50	17	102	3	38	0.71	23.87	35.03	40.65
South Coast											
Santa Maria	53	-4	68	37	548	519	24	0.01	7.42	12.51	13.42
Santa Barbara	58	0	73	42	677	546	23	0.00	10.26	16.35	17.38
Oxnard	56	-2	66	43	850	785	23	0.00	11.37	12.21	13.05
Riverside	61	-2	80	43	1,200	893	21	0.00	4.63	8.69	9.48
Los Angeles	60	-1	68	51	1,186	964	24	0.00	9.94	11.54	12.33
San Diego	60	-3	67	48	974	1,104	26	0.00	6.07	9.05	9.87
Southeast Interior											
Bishop	50	-5	79	20	240	93	12	0.00	4.76	4.05	4.87
Daggett	63	-2	85	43	851	635	8	0.00	1.02	2.98	3.80
Lancaster	57	-1	84	36	423	260	13	0.00	3.49	6.28	6.86
Thermal	69	-2	92	40	1,297	1,245	6	0.00	0.19	2.36	2.98
Blythe	70	-2	91	46	1,422	1,321	5	0.00	0.28	2.50	3.58
Imperial	69	-1	89	46	1,356	1,311	2	0.00	0.06	1.85	2.39

¹ Previously labeled as growing degree hours. The column title was corrected in the Sept 27, 2021 report. Additionally, degree days were previously calculated using a base of 60 degrees. The base temperature was changed to 50 degrees in the April 4, 2022 report.

² Total number of days with precipitation events this season.

³ Rain or melted snow/ice.

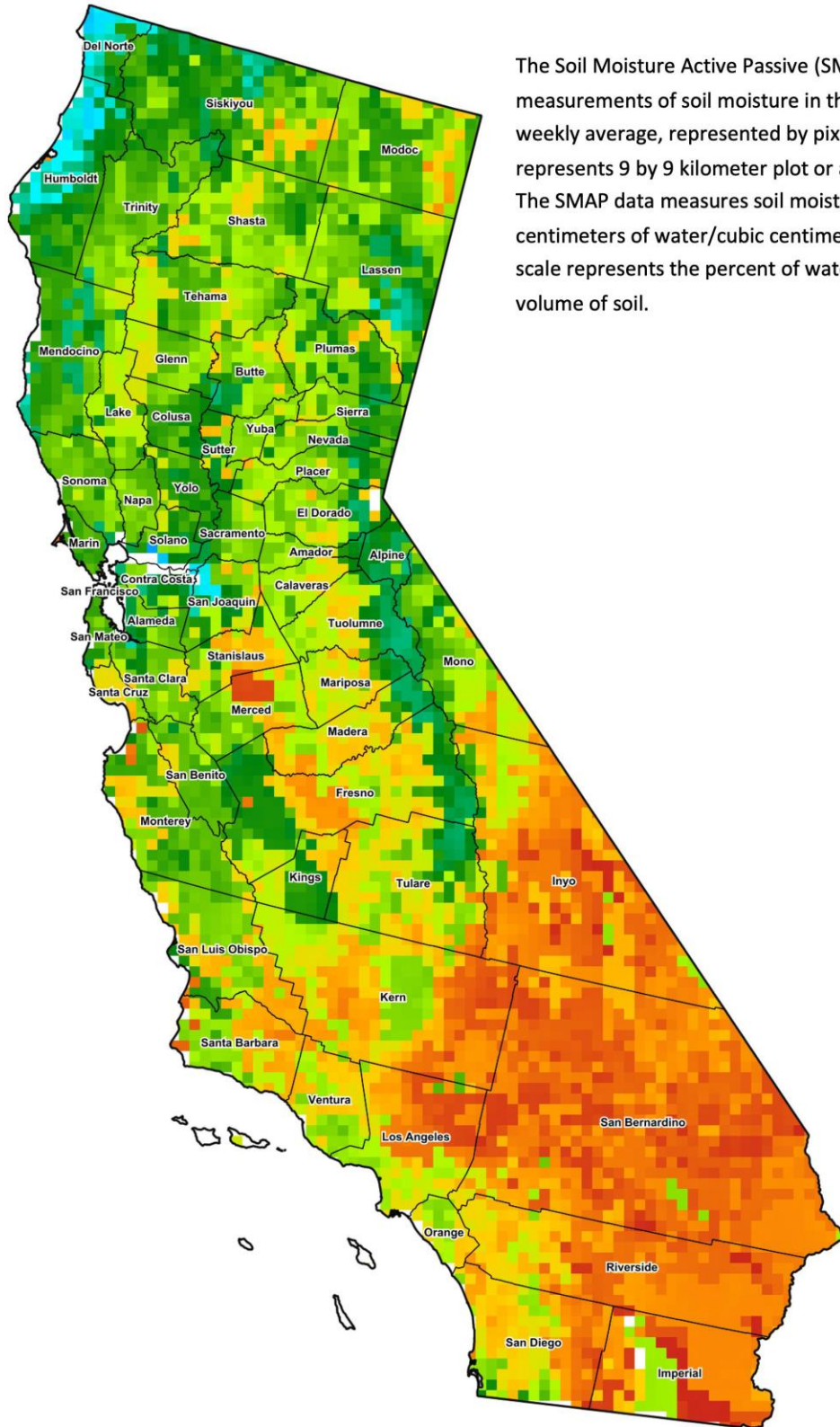
⁴ Normal periods 1990-2020 used in departure from normal calculations.

Data retrieved from NOAA and NWS. Calculated by USDA NASS.
All rights reserved.

Reservoir Data from the California Department of Water Resources

Reservoir	Capacity	April 17, 2022			This Date Last Year	
		Storage	Percent of Capacity	Percent of Average	Storage	Percent of Capacity
		<i>Acre Feet</i>	<i>Percent</i>	<i>Percent</i>	<i>Acre Feet</i>	<i>Percent</i>
Shasta Lake	4,547,300	1,753,601	39	47	2,371,769	52
Lake Oroville	3,537,400	1,753,356	50	67	1,486,472	42
Trinity Lake	2,443,800	801,620	33	43	1,306,388	53
New Melones Reservoir	2,413,000	927,938	39	62	1,501,947	63
San Luis Reservoir	2,057,200	937,871	46	55	1,062,547	52
Don Pedro Reservoir	4,547,300	1,266,400	62	82	1,383,176	68

Source: cdec.water.ca.gov/reportapp/javareports?name=DLYHYDRO



Drought Conditions from the U.S. Drought Monitor

Time	Rating						Drought Severity (DSCI)
	None	D0	D1	D2	D3	D4	
Current	0	100	100	95.75	46.87	0	343
Last Week	0	100	100	93.65	40.67	0	334
3 Months Ago	0	100	99.25	66.39	1.39	0	267
One Year Ago	0.78	99.22	94.14	76.97	38.68	5.36	314

The U.S. Drought Monitor is jointly produced by the National Drought Mitigation Center at the University of Nebraska-Lincoln, the United States Department of Agriculture, and the National Oceanic and Atmospheric Administration. droughtmonitor.unl.edu/CurrentMap/StateDroughtMonitor.aspx?CA