



# California Crop Weather

Cooperating with the California Department of Food and Agriculture  
Pacific Region • P.O. Box 1258 • Sacramento, CA 95812 • (916) 738-6600 • (855) 270-2722 FAX • [www.nass.usda.gov/ca](http://www.nass.usda.gov/ca)

**WEEK ENDING: October 24, 2021**  
**RELEASED: October 25, 2021**

**FREQUENCY: Weekly**  
**VOL. 42 NO. 30**

## WEATHER

Temperature lows for California ranged from low 20s to high 40s in the mountains, mid 20s to low 60s in the desert, mid 30s to low 60s along the coast, and high 30s to high 50s in the valley. Temperature highs for the state ranged from high 30s to low 70s in the mountains, mid 50s to low 80s in the valley, high 50s to mid 80s along the coast, and high 50s to low 90s in the desert.

## FIELD CROPS

In Central and Northern California, most **alfalfa** growers have completed their final cutting of hay. Growers worked to bale hay before the storm. Some growers plan to make a final cutting for haylage. **Corn** silage harvest was winding down. In the Sacramento Valley, **rice** harvest neared completion. Fall groundwork was largely completed. More **winter wheat** was planted ahead of the storm. In the San Joaquin Valley, Upland **cotton** harvest was ongoing. Pima cotton defoliation and harvest ramped up. Modules were stored in the field and trucked to gin yards. Ginning was ongoing. In Stanislaus County, **dry beans** continued to be cut and dried while alfalfa and corn continued to be harvested. In Tulare County, a few silage and alfalfa fields remained to be harvested. Most fields were fallow.

## FRUIT CROPS

**Prune, pear, and nectarine** harvests continued to slow. Late-variety **peach** and **plum** harvests continued. **Kiwifruit** and early-variety **pomegranate** harvests were ongoing. **Persimmon** harvest began with orchards showing good quality fruit. Late season table **grapes** were harvested. Valencia **orange, grapefruit, lemon, and lime** harvests continued. Navel **orange** harvest has begun with color playing a vital role in the speed of early harvest. **Olive** harvest was ongoing.

## NUT CROPS

Orchard preparation for the upcoming crop year was ongoing. **Almond** harvest was completed in Fresno County. Almonds were sprayed to combat weeds. **Walnut** and **pistachio** harvests continued. Pistachio trees were re-staked due to strong winds.

## VEGETABLE CROPS

Across the state, **winter squash** were harvested. In Modoc, Siskiyou, and Trinity Counties, **onion** harvest was ongoing and **carrot** harvest was complete. In Stanislaus County, **pumpkin** and **cantaloupe** harvests were completed. **Yams** were harvested. In Tulare County, pumpkins were harvested and sold at roadside stands. Some heirloom **tomatoes** were harvested. Small amounts of **zucchini**, butternut squash, and serrano **peppers** were also harvested. In Ventura County, **radishes, leeks, kale, and herbs** were harvested.

## LIVESTOCK

Despite the rain across northern California, rangeland and non-irrigated pasture continued to be in very poor condition. Irrigated pasture remained in good to excellent condition. Supplemental feeding was ongoing. In preparation for the winter storms, cattle were moved down from higher elevation range. In Sacramento County, some producers reported that their pastures had puddles after the rain had stopped and were expecting livestock to churn up the mud. In Amador County, some stock ponds that had been empty were now completely filled. Sheep grazed on retired cropland, harvested grain fields, and some alfalfa fields. Beekeepers continued preparing hives for overwintering.

**NOTE:** USDA NASS is considering changing the base temperature used to calculate growing degree days (found in the table below) from 60 °F to 50 °F. Your feedback on this change is welcomed. Please contact Sav Moore at [savanna.moore@usda.gov](mailto:savanna.moore@usda.gov) or 916-738-6620 with your comments. Thank you.

CALIFORNIA CROP WEATHER – WEEK ENDING OCTOBER 24, 2021											
STATIONS	TEMPERATURE				GROWING DEGREE DAYS <sup>1</sup> AT 60 °F BASE		RAIN DAYS	PRECIPITATION <sup>2</sup>			
	Average for Week Ending Oct 24, 2021	Departure from Normal <sup>3</sup>	High	Low	This Year	Normal Year <sup>3</sup>	This Season	This Week	This Season	Normal Season <sup>3</sup>	Normal Year <sup>3</sup>
					Jan 1 - Oct 24, 2021	Jan 1 - Oct 24, 2021	Oct 1 - Oct 24, 2021	Week Ending Oct 24, 2021	Oct 1 - Oct 24, 2021	Oct 1 - Oct 24	Oct 1 - Sept 30
-- Degrees Fahrenheit --				-- Number --		-- Days <sup>4</sup> --	-- Inches of Precipitation --				
<b>North Coast</b>											
Eureka WFO	57	3	73	42	34	0	9	2.61	3.40	1.45	40.53
Ukiah	56	-3	67	40	2283	1492	6	6.13	6.34	1.13	37.61
Santa Rosa	56	-4	68	37	1086	957	6	9.41	9.50	1.29	36.51
Napa State Hospital	57	-1	68	37	894	698	6	5.77	5.82	0.64	20.52
<b>Central Coast</b>											
San Francisco	60	-1	70	48	840	586	5	4.93	4.96	0.60	20.79
San Jose	62	-1	77	46	1449	1531	1	1.23	1.23	0.54	15.02
Salinas	63	2	73	44	778	515	3	0.06	0.15	0.39	12.91
Monterey	60	2	72	46	660	148	4	0.35	0.55	0.58	16.23
Paso Robles	59	-1	82	34	2125	1623	3	0.01	0.03	0.40	12.87
<b>Sacramento Valley</b>											
Redding	55	-6	67	39	3381	2642	7	4.39	4.54	1.38	34.80
Red Bluff	56	-7	66	40	3380	2660	7	2.91	2.97	0.79	24.63
Willows	58	-5	74	40	3280	2383	4	0.97	0.97	0.74	23.14
Oroville	59	-4	73	43	3233	2450	7	5.34	5.46	1.02	31.72
Marysville	NA	NA	NA	NA	NA	2204	NA	NA	NA	0.89	22.88
Sacramento	59	-2	73	38	2601	2053	5	4.46	4.49	0.55	21.35
<b>San Joaquin Valley</b>											
Stockton	59	-3	77	38	2260	2165	4	2.45	2.47	0.53	14.14
Modesto	61	-3	78	38	2609	2619	3	1.20	1.21	0.45	13.19
Merced Macready	63	1	83	37	2918	2252	1	0.00	0.04	0.46	12.59
Madera	62	0	83	39	2898	2386	1	0.00	0.05	0.49	12.10
Fresno	64	0	82	45	3810	3046	2	0.01	0.41	0.41	11.57
Lemoore	61	-1	83	38	3205	2407	1	0.00	0.20	0.35	7.95
Visalia	60	-4	80	40	3180	2662	2	0.06	0.09	0.40	10.99
Bakersfield	64	-1	82	46	3999	3177	1	0.03	0.03	0.19	6.51
<b>Cascade Sierra</b>											
Alturas	44	-1	67	22	897	401	7	0.86	1.00	0.67	14.22
Mount Shasta	46	-3	56	36	1344	585	8	4.34	4.64	1.45	43.48
Blue Canyon	42	-11	52	30	1572	800	9	13.46	14.59	2.54	65.00
Yosemite Valley	46	3	62	23	1249	1260	6	0.26	0.72	2.14	42.02
<b>South Coast</b>											
Santa Maria	57	-3	73	38	599	423	1	0.01	0.01	0.37	14.05
Santa Barbara	58	-3	72	42	831	698	4	0.01	0.23	0.52	17.89
Oxnard	60	-2	68	49	998	762	4	0.03	0.15	0.51	14.71
Riverside	63	-4	84	47	3022	2678	2	0.00	0.21	0.18	12.50
Los Angeles	62	-3	71	53	1444	1341	4	0.01	0.07	0.37	12.92
San Diego	63	-3	72	52	2063	1622	3	0.00	0.80	0.40	10.42
<b>Southeast Interior</b>											
Bishop	54	-1	76	26	2377	1761	0	0.00	0.00	0.21	5.21
Daggett	64	-2	83	41	4663	3946	0	0.00	0.00	0.14	4.08
Lancaster	56	-5	77	30	3366	2689	0	0.00	0.00	0.30	7.43
Thermal	68	-3	90	44	5475	4794	1	0.00	0.01	0.18	3.22
Imperial	70	-2	87	51	5486	5099	1	0.00	0.02	0.27	3.46

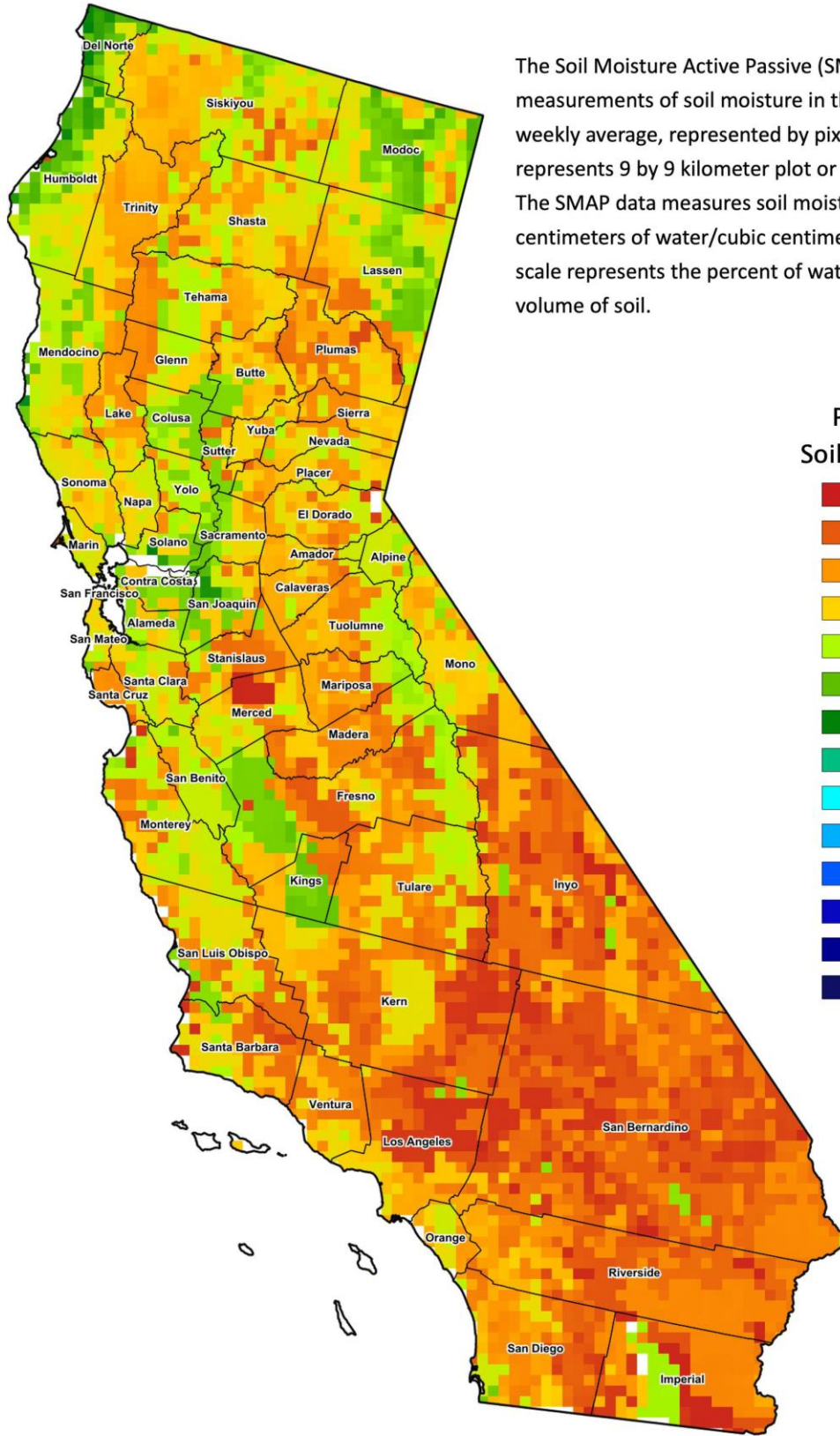
<sup>1</sup> Previously labeled as growing degree hours. The column title was corrected in the Sept 27, 2021 report.

<sup>2</sup> Rain or melted snow/ice.

<sup>3</sup> Normal periods 1980-2010 used in departure from normal calculations.

<sup>4</sup> Total number of days with precipitation events this season.

Data retrieved from NOAA and NWS. Calculated by USDA NASS.  
All rights reserved.



The Soil Moisture Active Passive (SMAP) provides measurements of soil moisture in the root zone as a weekly average, represented by pixels. Each pixel represents 9 by 9 kilometer plot or about 20,000 acres. The SMAP data measures soil moisture in cubic centimeters of water/cubic centimeters of soil. The scale represents the percent of water in a given volume of soil.

**Percent Soil Moisture**

- 0%
- 5%
- 10%
- 15%
- 20%
- 25%
- 30%
- 35%
- 40%
- 45%
- 50%
- 55%
- 60%
- >65%