



California Crop Weather

Cooperating with the California Department of Food and Agriculture
Pacific Region • P.O. Box 1258 • Sacramento, CA 95812 • (916) 738-6600 • (855) 270-2722 FAX • www.nass.usda.gov/ca

WEEK ENDING: September 26, 2021
RELEASED: September 27, 2021

FREQUENCY: Weekly
VOL. 42 NO. 26

WEATHER

Temperature lows for California ranged from the high 20s to low 60s in the mountains, mid 40s to low 70s in the desert, mid 40s to high 60s along the coast, and low 50s to low 70s in the valley. Temperature highs for the state ranged from high 50s to mid 100s along the coast, low 70s to mid 90s in the mountains, low 80s to low 100s in the valley, and mid 80s to high 100s in the desert.

FIELD CROPS

Across the Central Valley, **alfalfa** continued to be cut, dried and baled. Groundwork continued in preparation for fall plantings. In the Sacramento Valley, **rice** harvest steadily progressed. Some producers began to plant **winter wheat**. In the San Joaquin Valley, **cotton** bolls continued to open and some fields were defoliated. Cotton producers continued to prepare equipment for harvest and gins completed their repairs and preparations for the season. In Tulare County, **corn** was drying and fields continued to be chopped for silage. Some corn for silage was still being irrigated. In the Imperial Valley, a storm damaged some hay and increased humidity, leading to dew that hurt alfalfa color. In the northern mountains, growers were working to finish their final cutting of alfalfa before the rain and cold weather forecasted for this week.

FRUIT CROPS

Stone fruit harvest and post-harvest pruning was ongoing. **Prune, fig, pear, and pluot** harvests continued to wind down for the season. Late-season Angeleno **plum** harvest ended in Tulare County. **Peach, kiwifruit, pomegranate, and nectarine** harvests were steady. **Persimmons** and **quince** were showing color. Valencia **orange, pummelo, grape, and grapefruit** harvests continued. Early **mandarins** were sizing up well. Citrus groves were irrigated. **Olive** harvest began. **Strawberries** were harvested.

NUT CROPS

Orchard irrigation continued. **Almond** harvest was nearing completion. Gypsum was applied in almond orchards to improve water penetration. Weed spraying continued in almonds and **walnuts**. Walnut and **pistachio** harvest was ongoing.

VEGETABLE CROPS

In the Sacramento Valley, **winter squash**, including pumpkins, butternut, acorn, and spaghetti squash, were harvested. In San Mateo County, **onions, tomatoes, radicchio, rainbow chard, and summer squash** were harvested. In Stanislaus County, **broccoli** was planted. **Sweet potato** harvest continued. **Melon** harvest was winding down. In Tulare County, **onions, eggplant, summer squash, and hot peppers** were harvested. Fields were disced and plowed in preparation for planting.

LIVESTOCK

Rangeland and non-irrigated pasture were in very poor condition. More precipitation is needed for any significant range recovery. Irrigated pasture remained in good to excellent condition. Supplemental feeding and watering of cattle continued. Movement of cattle down from higher elevation range began. Beekeepers provided supplemental pollen for their hives and staged hives near water sources.

NOTE: USDA NASS is considering changing the base temperature used to calculate growing degree days (found in the table below) from 60 °F to 50 °F. Your feedback on this change is welcomed. Please contact Sav Moore at savanna.moore@usda.gov or 916-738-6620 with your comments. Thank you.

CALIFORNIA CROP WEATHER – WEEK ENDING SEPTEMBER 26, 2021											
STATIONS	TEMPERATURE				GROWING DEGREE DAYS ¹ AT 60 °F BASE		RAIN DAYS	PRECIPITATION ²			
	Average for Week Ending Sep 26, 2021	Departure from Normal ³	High	Low	This Year	Normal Year ³	This Season	This Week	This Season	Normal Season ³	Normal Year ³
					Jan 1 - Sep 26, 2021	Jan 1 - Sep 26, 2021	Oct 1 - Sep 26, 2021	Week Ending Sep 26, 2021	Oct 1 - Sep 26, 2021	Oct 1 - Sep 26	Oct 1 - Sept 30
	-- Degrees Fahrenheit --				-- Number --		-- Days ⁴ --	-- Inches of Precipitation --			
North Coast											
Eureka WFO	57	1	77	47	30	0	110	0.00	25.45	40.22	40.53
Ukiah	71	4	98	47	2187	1420	54	0.00	13.54	37.28	37.61
Santa Rosa	67	2	97	45	1022	888	46	0.00	12.98	36.14	36.51
Napa State Hospital	66	3	96	45	825	674	41	0.00	7.48	20.23	20.52
Central Coast											
San Francisco	66	2	90	55	734	500	40	0.00	7.84	20.61	20.79
San Jose	N/A	N/A	N/A	N/A	N/A	1368	N/A	N/A	N/A	14.79	15.02
Salinas	N/A	N/A	N/A	N/A	N/A	446	N/A	N/A	N/A	12.79	12.91
Monterey	65	4	88	54	587	144	39	0.00	7.57	16.05	16.23
Paso Robles	73	5	100	48	2007	1518	22	0.00	6.74	12.73	12.87
Sacramento Valley											
Redding	76	4	95	56	3239	2463	56	0.00	14.24	34.50	34.80
Red Bluff	77	4	96	57	3236	2453	47	0.00	9.49	24.38	24.63
Willows	N/A	N/A	N/A	N/A	N/A	2190	N/A	N/A	N/A	22.94	23.14
Oroville	77	6	96	58	3081	2270	39	0.00	8.82	31.43	31.72
Marysville	76	6	97	54	2671	2042	38	0.00	7.16	22.61	22.88
Sacramento	76	6	96	56	2474	1907	34	0.00	6.69	21.09	21.35
San Joaquin Valley											
Stockton	73	2	94	54	2152	1994	29	0.00	7.90	14.00	14.14
Modesto	74	1	94	55	2486	2392	26	0.00	7.16	13.05	13.19
Merced Macready	75	5	100	52	2763	2093	29	0.00	7.01	12.45	12.59
Madera	75	4	99	50	2758	2208	19	0.00	1.78	11.98	12.10
Fresno	79	5	100	60	3600	2799	26	0.00	6.59	11.46	11.57
Lemoore	77	6	102	50	3053	2233	22	0.00	4.30	7.87	7.95
Visalia	71	-1	87	56	3038	2446	27	0.00	5.17	10.89	10.99
Bakersfield	79	4	101	63	3786	2902	20	0.00	2.78	6.45	6.51
Cascade Sierra											
Alturas	58	4	83	29	896	401	64	0.00	6.82	14.09	14.22
Mount Shasta	63	4	85	40	1334	585	73	0.00	19.45	43.09	43.48
Blue Canyon	68	6	80	52	1537	797	69	0.00	32.30	64.37	65.00
Yosemite Valley	N/A	N/A	N/A	N/A	N/A	NA	N/A	N/A	N/A	41.41	42.02
South Coast											
Santa Maria	63	0	86	52	548	368	26	0.00	6.90	13.92	14.05
Santa Barbara	63	-1	76	53	770	622	17	0.00	7.32	17.70	17.89
Oxnard	64	-1	74	56	876	662	13	0.00	2.82	14.56	14.71
Riverside	78	3	104	59	2801	2390	16	0.00	4.54	12.35	12.50
Los Angeles	68	0	82	61	1255	1145	15	0.00	5.14	12.77	12.92
San Diego	73	3	86	62	1854	1400	31	0.00	4.75	10.30	10.42
Southeast Interior											
Bishop	68	3	91	44	2352	1735	9	0.00	1.70	5.14	5.21
Daggett	81	3	100	59	4433	3638	13	0.00	0.85	4.03	4.08
Lancaster	76	5	97	51	3261	2546	14	0.00	1.37	7.35	7.43
Thermal	83	2	107	62	5113	4363	10	0.00	0.97	3.17	3.22
Blythe	N/A	N/A	N/A	N/A	N/A	4886	N/A	N/A	N/A	3.78	3.85
Imperial	84	1	107	65	5084	4629	1	0.00	0.69	3.39	3.46

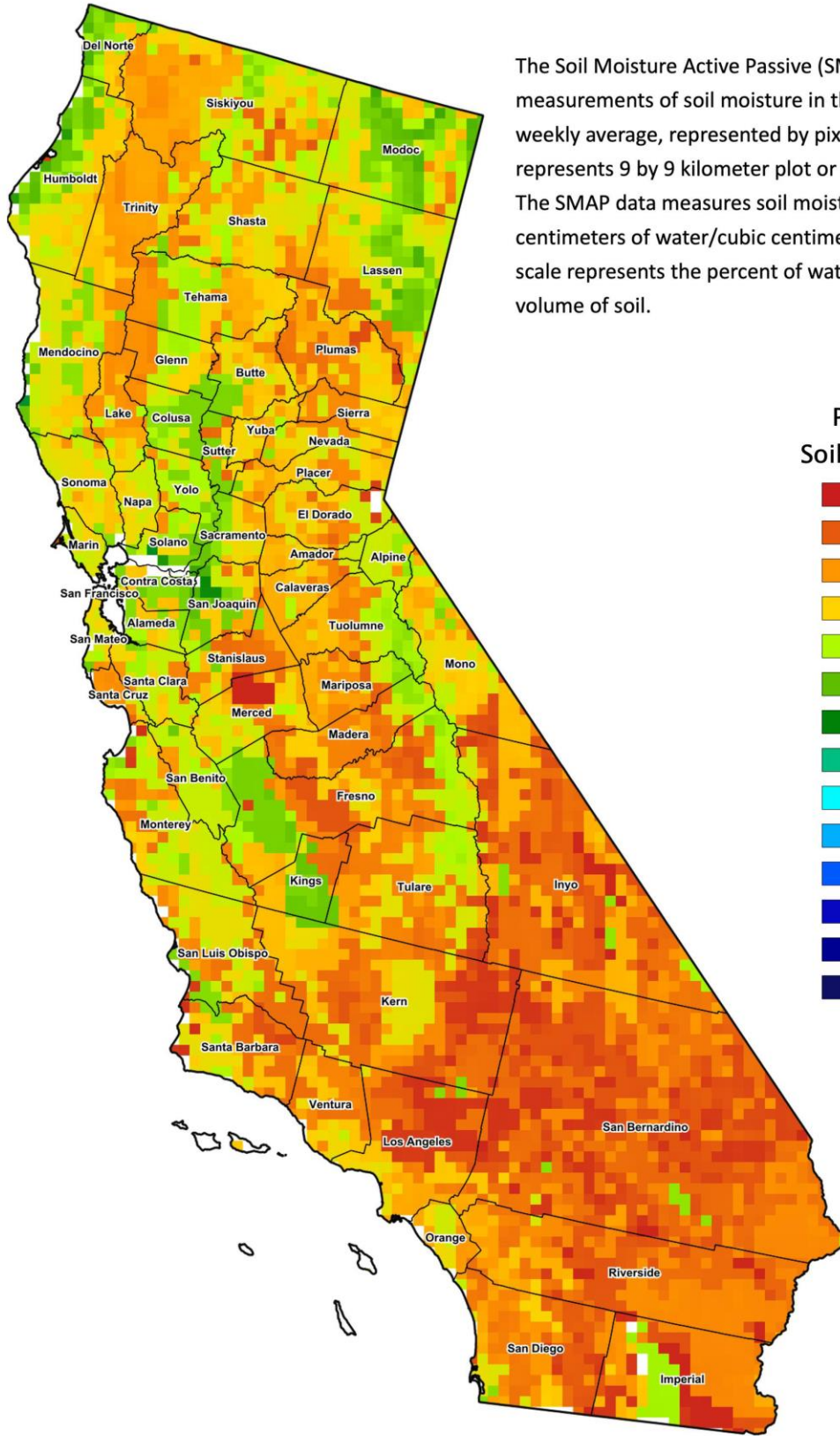
¹ Previously labeled as growing degree hours. The column title was corrected in the Sept 27, 2021 report.

² Rain or melted snow/ice.

³ Normal periods 1980-2010 used in departure from normal calculations.

⁴ Total number of days with precipitation events this season.

Data retrieved from NOAA and NWS. Calculated by USDA NASS.
All rights reserved.



The Soil Moisture Active Passive (SMAP) provides measurements of soil moisture in the root zone as a weekly average, represented by pixels. Each pixel represents 9 by 9 kilometer plot or about 20,000 acres. The SMAP data measures soil moisture in cubic centimeters of water/cubic centimeters of soil. The scale represents the percent of water in a given volume of soil.

