



California Crop Weather

Cooperating with the California Department of Food and Agriculture
Pacific Region • P.O. Box 1258 • Sacramento, CA 95812 • (916) 738-6600 • (855) 270-2722 FAX • www.nass.usda.gov/ca

WEEK ENDING: September 19, 2021
RELEASED: September 20, 2021

FREQUENCY: Weekly
VOL. 42 NO. 25

WEATHER

Temperature lows for California ranged from the mid 30s to mid 60s in the mountains, low 40s to low 80s in the desert, low 40s to high 60s along the coast, and low 50s to low 70s in the valley. Temperature highs for the state ranged from the high 50s to mid 90s in the mountains, low 60s to low 100s along the coast, low 70s to mid 100s in the valley, and low 80s to low 110s in the desert.

FIELD CROPS

Across the Central Valley, **alfalfa** continued to be cut, dried and baled. Some alfalfa growers have reported that aphids and armyworms have been hard to control, with some fields requiring multiple sprayings. Groundwork continued in preparation for fall plantings. In the Sacramento Valley, **rice** harvest continued. In the San Joaquin Valley, **cotton** bolls continued to open and defoliation activity increased. Cotton producers prepared equipment for harvest. **Corn** was chopped for silage and fields were prepared for winter plantings. In Stanislaus County, **Sudan** fields were sprayed for weeds. In Tulare County, **dry bean** fields were cut into windrows for drying. Some corn for silage was still being irrigated. In the northern mountains, alfalfa growers continued working on their third cutting.

FRUIT CROPS

Stone fruit harvest and post-harvest pruning was ongoing. **Prune, plum, fig, pear, and pluot** harvests began to wind down for the season. Golden **kiwifruit** harvest began. Late variety **peach** and **nectarine** harvests began to wrap up. **Pomegranates** and **persimmons** were maturing well. Table and wine **grapes** were harvested. Valencia **orange, pummelo, and grapefruit** harvests continued. Early **mandarins** were sizing up well. Old citrus groves were pushed out and replaced with younger trees. Citrus groves were irrigated. **Quince** was showing color and sizing up nicely. **Olive** groves were cleaned. **Strawberries** were harvested while growers continued to treat their fields in preparation for strawberry planting.

NUT CROPS

Orchards were irrigated. **Almond, walnut, and pistachio** harvests continued.

VEGETABLE CROPS

Across the Central Valley, **melons** continued to be harvested. In the Sacramento Valley, **winter squash**, such as butternut, acorn, and spaghetti squash, were harvested. In Stanislaus County, **pepper** and **tomato** harvests continued. **Sweet potatoes** and **pumpkins** were harvested. **Broccoli** was planted. In Tulare County, summer squash, peppers, **onions, eggplants, and herbs** continued to be harvested. Producers disced and fertilized fields in preparation for fall plantings.

LIVESTOCK

Rangeland and non-irrigated pasture were in poor to very poor condition. Irrigated pasture remained in good to excellent condition. Some livestock were moved to areas with better grazing and water conditions. Ranchers continued supplemental feeding and watering of cattle due to the extremely poor range conditions. Some bee hives were placed near water sources

CALIFORNIA CROP WEATHER – WEEK ENDING SEPTEMBER 19, 2021

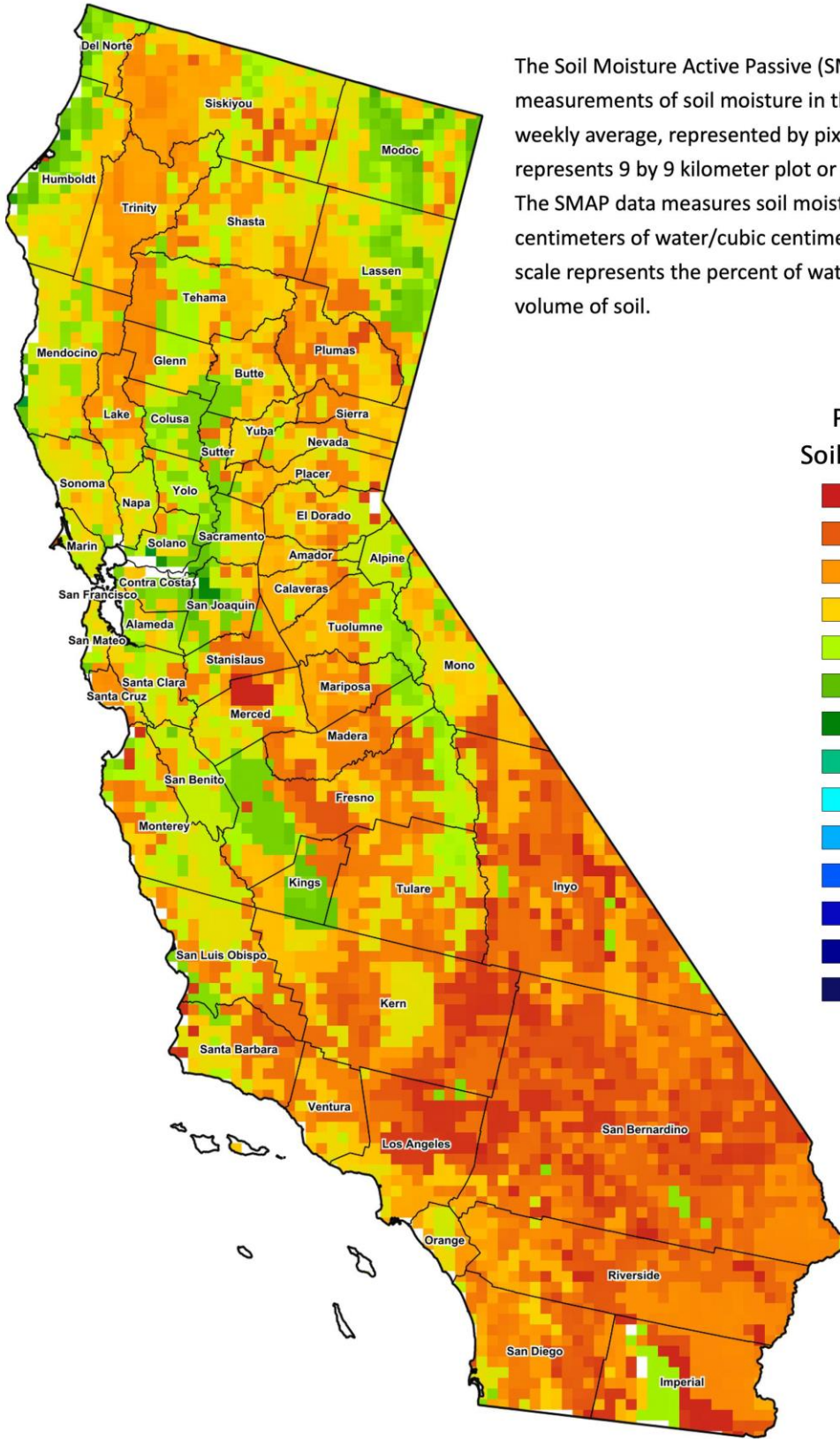
STATIONS	TEMPERATURE				GROWING DEGREE HOURS AT 60°F BASE		RAIN DAYS	PRECIPITATION ¹			
	Average for Week Ending Sep 19, 2021	Departure from Normal ²	High	Low	This Year	Normal Year ²	This Season	This Week	This Season	Normal Season ²	Normal Year ²
					Jan 1 - Sep 19, 2021	Jan 1 - Sep 19, 2021	Oct 1 - Sep 19, 2021	Week Ending Sep 19, 2021	Oct 1 - Sep 19, 2021	Oct 1 - Sep 19	Oct 1 - Sept 30
	-- Degrees Fahrenheit --				-- Number --		-- Days ³ --	-- Inches of Precipitation --			
North Coast											
Eureka WFO	56	-1	65	43	27	0	110	0.95	25.56	40.05	40.53
Ukiah	71	3	102	50	2102	1368	54	0.05	13.53	37.17	37.61
Santa Rosa	64	-2	91	45	968	847	46	0.07	12.98	36.06	36.51
Napa State Hospital	64	-1	81	49	777	648	41	0.00	7.48	20.15	20.52
Central Coast											
San Francisco	63	-2	72	54	691	465	40	0.00	7.84	20.56	20.79
San Jose	68	-1	84	54	1205	1306	33	0.00	5.33	14.74	15.02
Salinas	62	-2	70	55	594	416	38	0.00	5.81	12.73	12.91
Monterey	63	2	74	55	548	137	39	0.00	7.57	16.00	16.23
Paso Robles	69	-1	100	52	1911	1459	22	0.00	6.74	12.65	12.87
Sacramento Valley											
Redding	75	1	106	55	3124	2373	56	0.03	14.23	34.34	34.80
Red Bluff	75	0	101	57	3115	2359	47	0.00	9.49	24.24	24.63
Willows	N/A	N/A	N/A	N/A	N/A	N/A	N/A	N/A	N/A	N/A	N/A
Oroville	75	2	97	57	2957	2189	39	0.05	8.82	31.24	31.72
Marysville	74	3	98	54	2556	1969	38	0.01	7.16	22.46	22.88
Sacramento	73	1	99	55	2361	1834	34	0.00	6.69	21.02	21.35
San Joaquin Valley											
Stockton	71	-1	97	51	2057	1914	29	0.00	7.90	13.91	14.14
Modesto	72	-2	97	54	2383	2300	26	0.00	7.16	12.96	13.19
Merced Macready	75	3	101	55	2653	2017	29	0.00	7.01	12.37	12.59
Madera	75	2	101	54	2654	2127	19	0.00	1.78	11.90	12.10
Fresno	79	3	100	60	3463	2695	26	0.00	6.59	11.41	11.57
Lemoore	77	4	102	55	2934	2152	22	0.00	4.30	7.80	7.95
Visalia	76	2	97	57	2944	2356	27	0.00	5.17	10.84	10.99
Bakersfield	80	3	99	61	3646	2792	20	0.00	2.78	6.43	6.51
Cascade Sierra											
Alturas	58	2	87	35	894	401	64	0.53	6.78	13.94	14.22
Mount Shasta	62	1	85	43	1306	585	73	0.14	19.34	42.92	43.48
Blue Canyon	65	1	81	44	1480	779	69	0.54	32.30	64.05	65.00
Yosemite Valley	N/A	N/A	N/A	N/A	N/A	N/A	N/A	N/A	N/A	N/A	N/A
South Coast											
Santa Maria	62	-1	75	53	530	345	26	0.00	6.90	13.88	14.05
Santa Barbara	60	-5	69	47	746	587	17	0.00	7.32	17.61	17.89
Oxnard	62	-3	70	53	841	627	13	0.00	2.82	14.51	14.71
Riverside	74	-2	100	56	2673	2284	16	0.00	4.54	12.28	12.50
Los Angeles	66	-3	72	59	1199	1082	15	0.00	5.14	12.70	12.92
San Diego	71	0	77	66	1765	1328	31	0.00	4.75	10.25	10.42
Southeast Interior											
Bishop	70	2	97	42	2288	1695	9	0.00	1.70	5.09	5.21
Daggett	83	3	105	64	4284	3512	13	0.00	0.85	3.99	4.08
Lancaster	75	1	98	53	3148	2465	14	0.00	1.37	7.31	7.43
Thermal	86	2	112	59	4952	4209	10	0.00	0.97	3.11	3.22
Blythe	92	5	113	71	5309	4715	9	0.00	1.23	3.70	3.85
Imperial	91	5	112	72	4913	4462	1	0.00	0.69	3.30	3.46

¹ Rain or melted snow/ice.

² Normal periods 1980-2010 used in departure from normal calculations.

³ Total number of days with precipitation events this season.

Data retrieved from NOAA and NWS. Calculated by USDA NASS.
All rights reserved.



The Soil Moisture Active Passive (SMAP) provides measurements of soil moisture in the root zone as a weekly average, represented by pixels. Each pixel represents 9 by 9 kilometer plot or about 20,000 acres. The SMAP data measures soil moisture in cubic centimeters of water/cubic centimeters of soil. The scale represents the percent of water in a given volume of soil.