



California Crop Weather

Cooperating with the California Department of Food and Agriculture
Pacific Region • P.O. Box 1258 • Sacramento, CA 95812 • (916) 738-6600 • (855) 270-2722 FAX • www.nass.usda.gov/ca

WEEK ENDING: August 1, 2021
RELEASED: August 2, 2021

FREQUENCY: Weekly
VOL. 42 NO. 18

WEATHER

Temperature lows for California ranged from low 50s to low 70s along the coast, low 50s to low 70s in the mountains, high 50s to high 80s in the desert, and low 60s to mid 80s in the valley. Temperature highs for the state ranged from high 50s to mid 100s along the coast, low 70s to high 90s in the mountains, low 80s to high 100s in the valley, and mid 80s to mid 110s in the desert.

FIELD CROPS

The weather was cooler than previous weeks, allowing for better field crop growth. Irrigation was still a necessity for crops to grow steadily. In Tulare County, **alfalfa** and other hay were cut, dried, and baled for hay. **Corn** fields for silage were in various stages of maturity. **Cotton** plants were blooming and bolls were developing. In the Central Valley, **rice** fields progressed steadily. In the Sacramento Valley, **sunflowers** were being dried down ahead of harvest.

FRUIT CROPS

Stone fruit orchard clean-up and orchard sprays continued to combat spider mites and Navel Orange Worm. Irrigation increased due to drought. **Peaches**, **nectarines**, and **apricots** continued to ripen rapidly. Clingstone peaches were harvested. Freestone peaches, **plums** and **pluots** were harvested. **Pomegranates** began to show color. **Apples**, **kiwifruit**, **persimmons**, and **olives** continued to mature. Early varieties of **grapes** continued to be heavily harvested due to lack of water. **Pummelo**, **tangelo**, **lemon**, **lime**, and **grapefruit** harvests were ongoing. **Strawberry** harvest continued.

NUT CROPS

Final irrigation efforts and orchard preparation for harvest continued. Orchards were treated for various pests where necessary. **Almond**, **walnut**, and **pistachio** orchards were steadily developing.

VEGETABLE CROPS

Processing **tomato** and **melon** harvests continued throughout the Central Valley. In Yolo County, organic growers harvested heirloom tomatoes, cherry tomatoes, and **squash**. In Stanislaus County, **sweet potatoes** and **peppers** grew well and sweet **corn** was harvested. In Tulare County, spring **lettuce**, **onions**, **eggplant**, **zucchini**, and **herbs** were harvested. In Monterey County, **celery** and **cauliflower** were harvested.

LIVESTOCK

Rangeland and non-irrigated pasture were in poor to very poor condition. Irrigated range remained in good to excellent condition. With the accumulated extreme heat having deteriorated range forage, some livestock were moved to areas with better grazing and water conditions. Cattle supplemental feeding continued. Milk production was negatively impacted by the excessive heat.

CALIFORNIA CROP WEATHER – WEEK ENDING AUGUST 1, 2021

STATIONS	TEMPERATURE				GROWING DEGREE HOURS AT 60°F BASE		RAIN DAYS	PRECIPITATION ¹			
	Average for Week Ending Aug 1, 2021	Departure from Normal ²	High	Low	This Year	Normal Year ²	This Season	This Week	This Season	Normal Season ²	Normal Year ²
					Jan 1- Aug 1, 2021	Jan 1- Aug 1, 2021	Oct 1- Aug 1, 2021	Week Ending Aug 1, 2021	Oct 1- Aug 1, 2021	Oct 1- Aug 1	Oct 1- Sept 30
	-- Degrees Fahrenheit --				-- Number --		-- Days ³ --	-- Inches of Precipitation --			
North Coast											
Eureka WFO	56	-2	63	51	17	0	103	0.14	24.53	39.43	40.53
Ukiah	79	5	106	56	1282	783	51	0.00	13.47	36.80	37.61
Santa Rosa	67	0	94	51	586	474	44	0.00	12.87	35.85	36.51
Napa State Hospital	67	2	89	53	468	344	41	0.00	7.48	20.04	20.52
Central Coast											
San Francisco	66	2	75	56	420	219	40	0.00	7.84	20.44	20.79
San Jose	71	0	84	59	680	778	33	0.00	5.33	14.67	15.02
Salinas	65	2	75	57	307	188	38	0.00	5.81	12.63	12.91
Monterey	67	6	80	58	270	38	39	0.00	7.57	15.88	16.23
Paso Robles	77	3	104	55	1183	842	22	0.00	6.74	12.45	12.87
Sacramento Valley											
Redding	87	4	108	62	2087	1466	52	0.01	13.82	33.80	34.80
Red Bluff	86	4	107	67	2074	1460	46	0.00	9.23	23.86	24.63
Willows	N/A	N/A	N/A	N/A	N/A	N/A	N/A	N/A	N/A	N/A	N/A
Oroville	84	5	106	63	1963	1367	38	0.00	8.77	30.74	31.72
Marysville	83	6	107	65	1674	1232	36	0.00	7.14	22.16	22.88
Sacramento	80	4	103	60	1535	1126	33	0.00	6.68	20.81	21.35
San Joaquin Valley											
Stockton	80	3	100	60	1311	1168	28	0.00	7.89	13.76	14.14
Modesto	82	3	101	66	1538	1453	25	0.00	7.13	12.83	13.19
Merced Macready	85	7	104	66	1708	1258	29	0.00	7.01	12.20	12.59
Madera	84	5	104	62	1703	1329	19	0.00	1.78	11.75	12.10
Fresno	89	5	106	73	2269	1689	26	0.00	6.59	11.32	11.57
Lemoore	87	8	106	67	1883	1348	22	0.00	4.30	7.71	7.95
Visalia	85	4	104	68	2003	1477	26	0.00	5.15	10.77	10.99
Bakersfield	90	6	105	73	2413	1751	20	0.00	2.78	6.35	6.51
Cascade Sierra											
Alturas	70	3	91	52	641	249	61	0.07	5.91	13.30	14.22
Mount Shasta	74	5	97	54	862	331	69	0.20	18.72	42.21	43.48
Blue Canyon	75	5	87	58	888	392	66	0.02	30.97	63.31	65.00
Yosemite Valley	N/A	N/A	N/A	N/A	N/A	N/A	N/A	N/A	N/A	N/A	N/A
South Coast											
Santa Maria	64	0	76	51	295	149	25	0.00	6.89	13.79	14.05
Santa Barbara	66	0	75	56	455	294	17	0.00	7.32	17.38	17.89
Oxnard	66	0	72	57	523	328	13	0.00	2.82	14.38	14.71
Riverside	82	2	99	65	1697	1350	16	0.15	4.54	12.08	12.50
Los Angeles	67	-2	73	62	710	596	14	0.12	5.12	12.56	12.92
San Diego	72	1	79	65	1072	747	30	0.00	4.52	10.17	10.42
Southeast Interior											
Bishop	80	2	99	59	1482	1044	7	0.01	1.64	4.87	5.21
Daggett	88	-1	106	72	2838	2250	13	0.15	0.85	3.60	4.08
Lancaster	85	2	104	67	2083	1521	14	0.01	1.37	7.13	7.43
Thermal	95	4	116	75	3401	2808	8	0.44	0.80	2.77	3.22
Blythe	95	0	110	76	3569	3142	8	0.11	1.15	2.91	3.85
Imperial	94	1	113	75	3272	2930	1	0.00	0.69	2.73	3.46

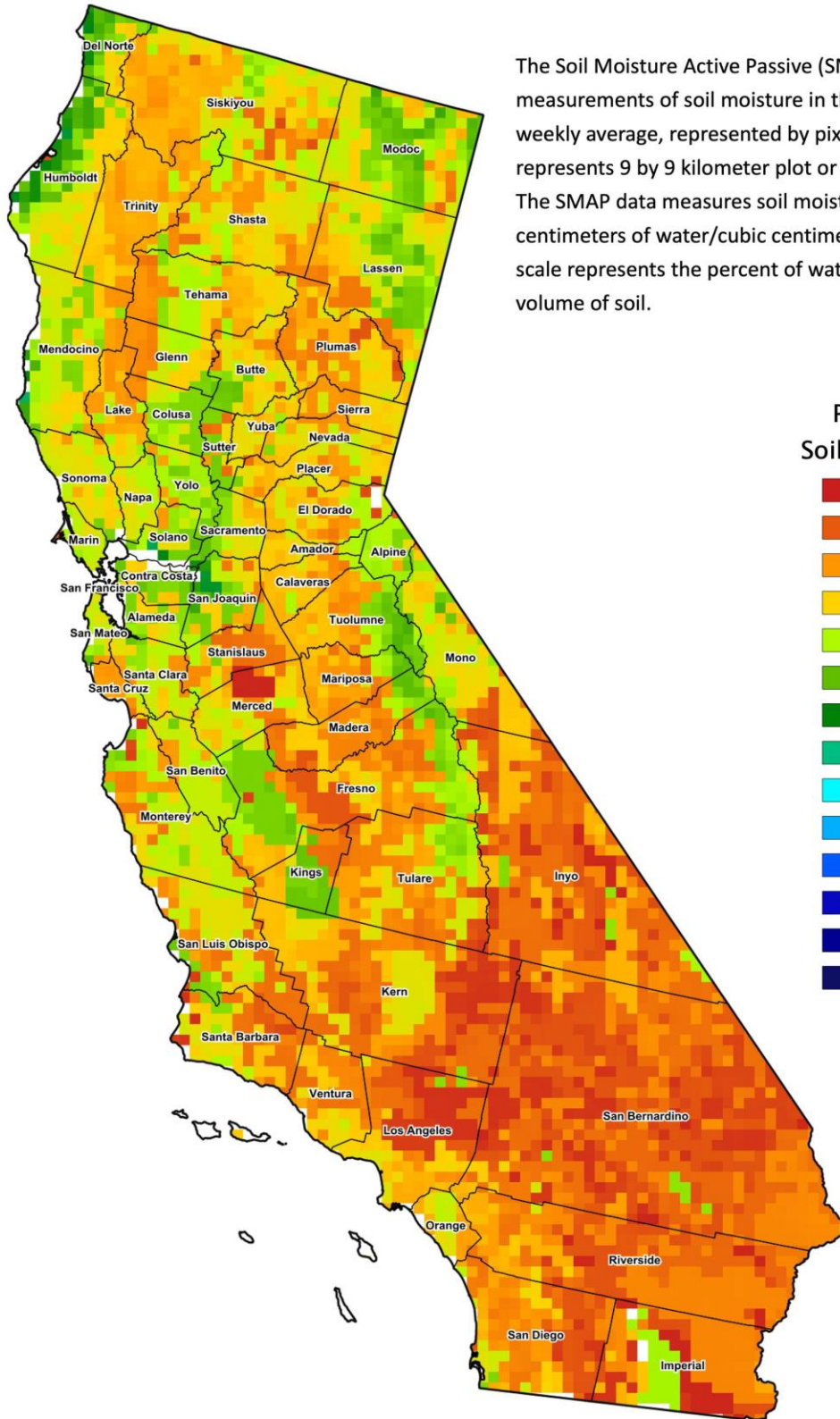
¹ Rain or melted snow/ice.

² Normal periods 1980-2010 used in departure from normal calculations.

³ Total number of days with precipitation events this season.

Data retrieved from NOAA and NWS. Calculated by USDA NASS.

All rights reserved.



The Soil Moisture Active Passive (SMAP) provides measurements of soil moisture in the root zone as a weekly average, represented by pixels. Each pixel represents 9 by 9 kilometer plot or about 20,000 acres. The SMAP data measures soil moisture in cubic centimeters of water/cubic centimeters of soil. The scale represents the percent of water in a given volume of soil.

Percent Soil Moisture

- 0%
- 5%
- 10%
- 15%
- 20%
- 25%
- 30%
- 35%
- 40%
- 45%
- 50%
- 55%
- 60%
- >65%