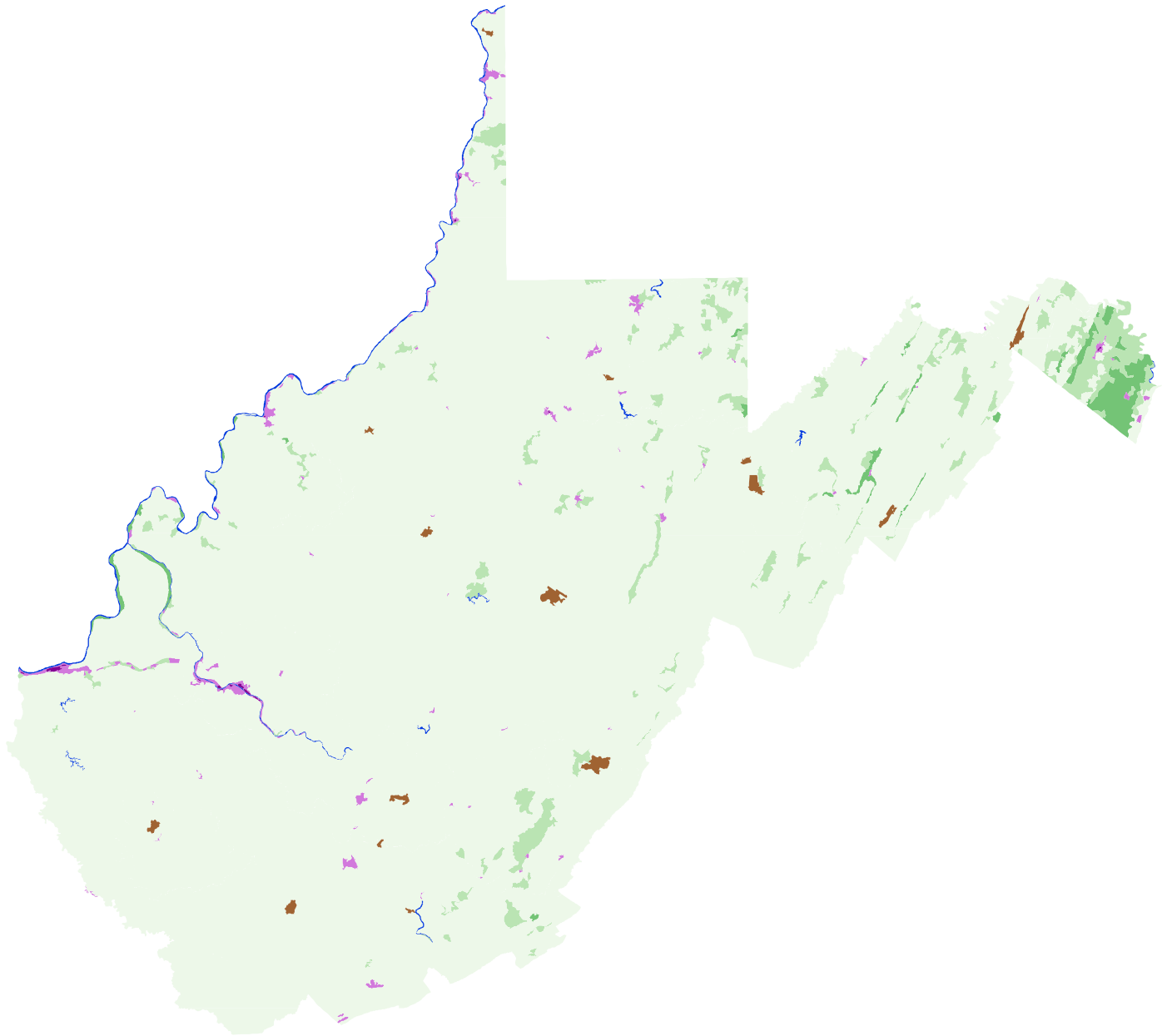


Stratification of West Virginia 2005



USDA

Land Use Strata

- | | |
|--------------------------------|--------------------------------|
| >50% Cultivated | Commercial: >100 homes/sq. mi. |
| 15-50% Cultivated | Non-Agricultural |
| <15% Cultivated | Water |
| Agri-Urban: >100 homes/sq. mi. | |