

Texas Floods

July 2025

USDA NASS Disaster Monitoring Team
Report last updated: July 17, 2025

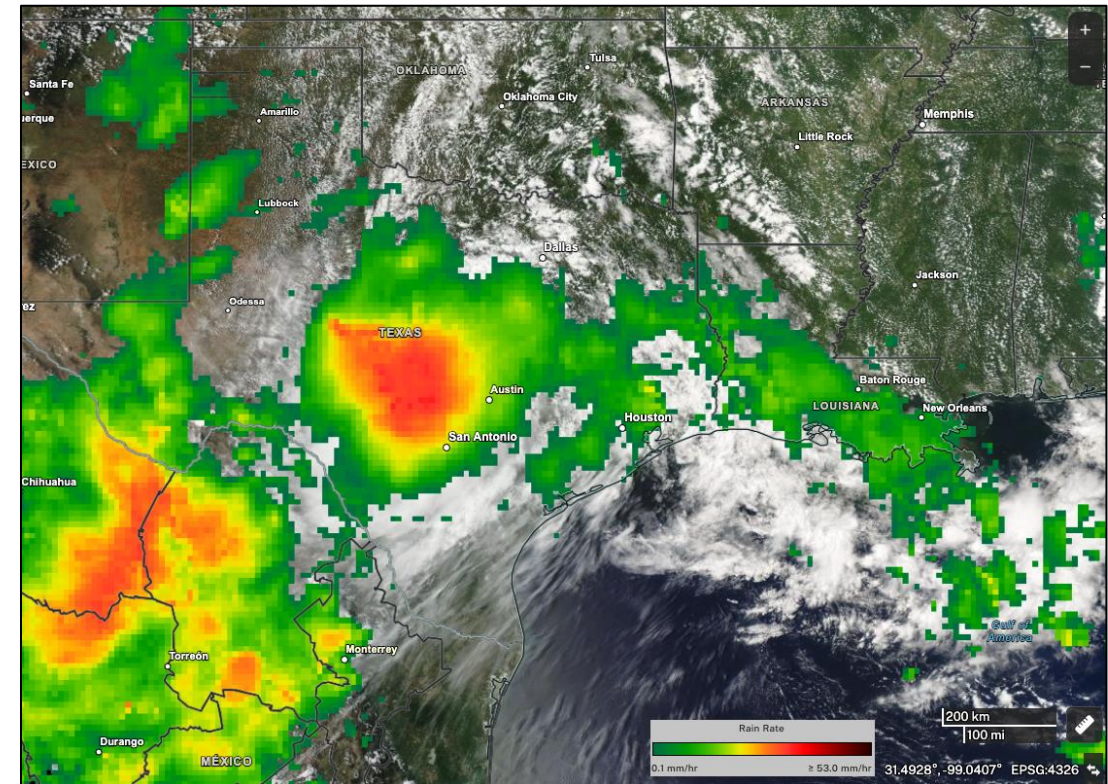


https://www.nass.usda.gov/Research_and_Science/Disaster-Analysis/index.php



Texas Floods Event Summary

- Heavy rainfall in early July triggered by Tropical Storm Barry resulted in catastrophic flooding across Central Texas, the Hill Country, and Concho Valley.
- Communities along the Guadalupe River, which reached a major flood stage, were devastated.
- Flash flooding resulted in significant loss of life, damage to property, and flooded croplands.



1-day precipitation totals from NASA's IMERG multi-satellite precipitation product show heavy rainfall over central Texas on July 4, 2025.

Credit: NASA Worldview, Jacob Reed (NASA GSFC). **Image Source:** [NASA](#)

Event Information Sources:

<https://tdem.texas.gov/disasters/july-flooding-25-0026>

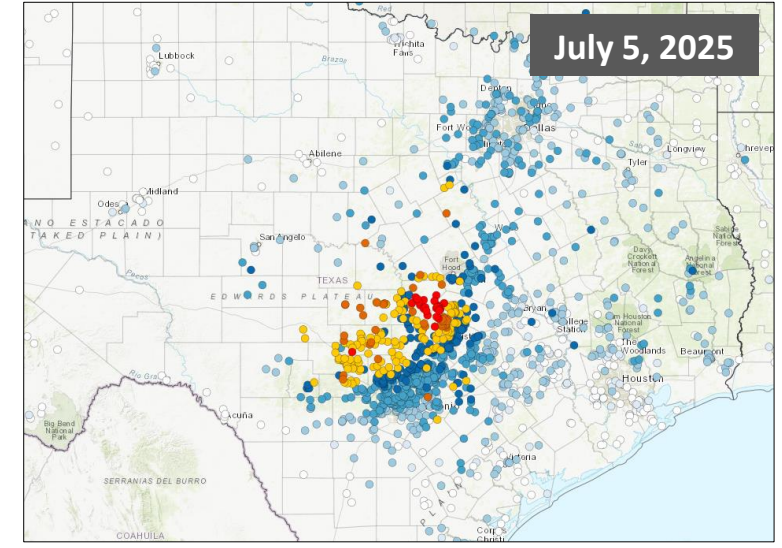
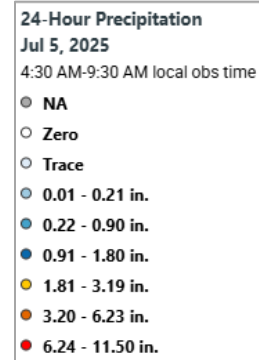
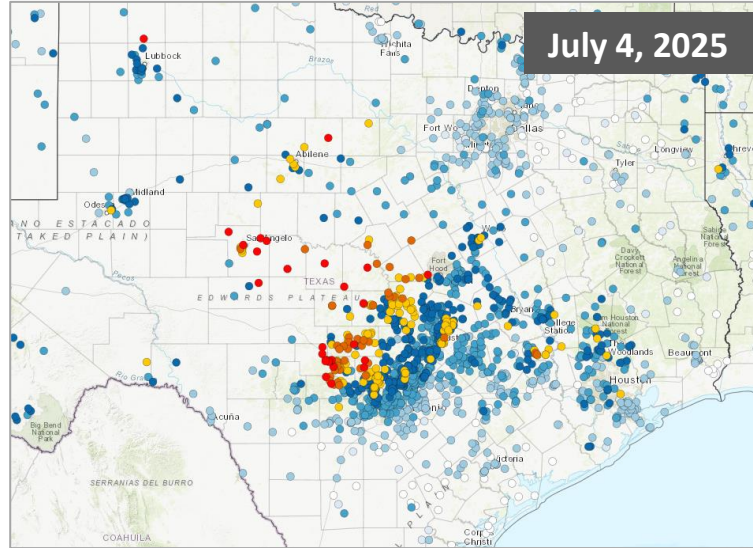
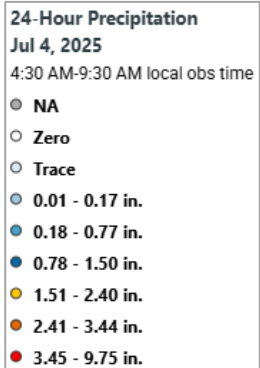
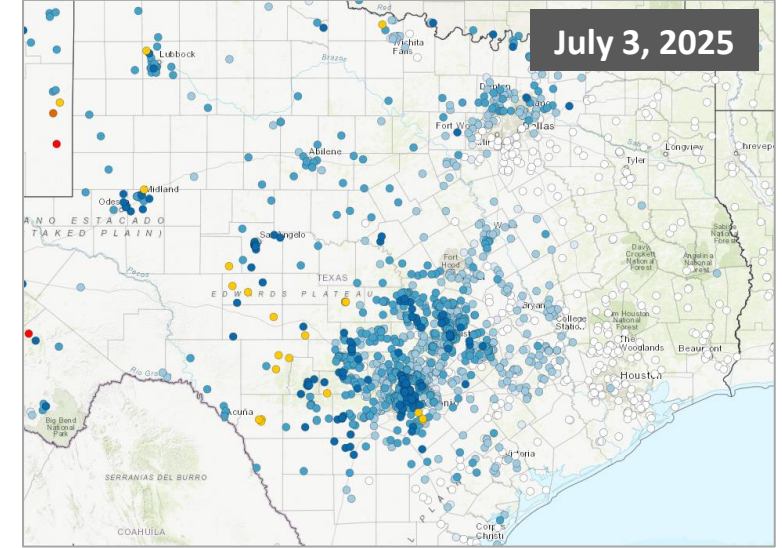
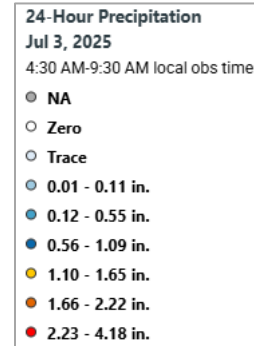
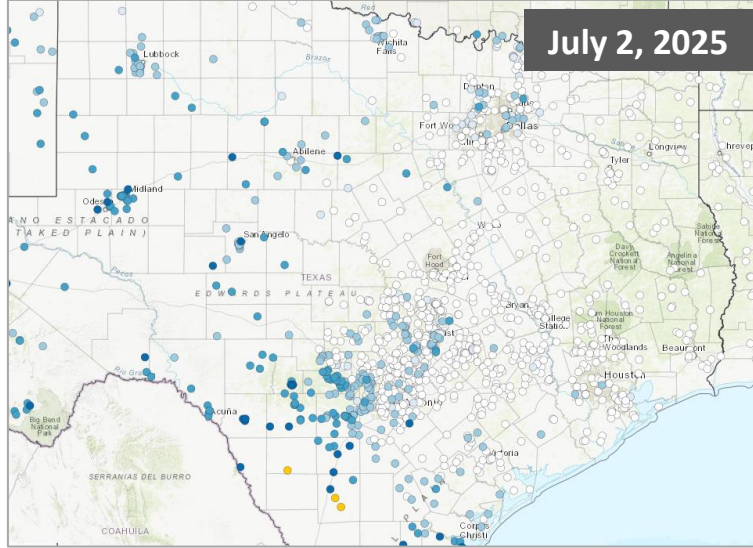
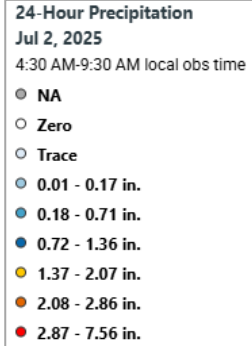
<https://appliedsciences.nasa.gov/what-we-do/disasters/disasters-activations/texas-flooding-july-2025>

<https://texasagriculture.gov/News-Events/Article/10455/COMMISSIONER-SID-MILLER-DEPLOYS-TDA-RESOURCES-TO-AID-TEXANS-IMPACTED-BY-DEVASTATING-FLOODING>

<https://www.khou.com/article/news/state/texas-news/texas-flood/texas-hill-country-flooding-timing-factors/285-e8b25b39-7e5f-4d2b-a4fd-8156b8ad815d>

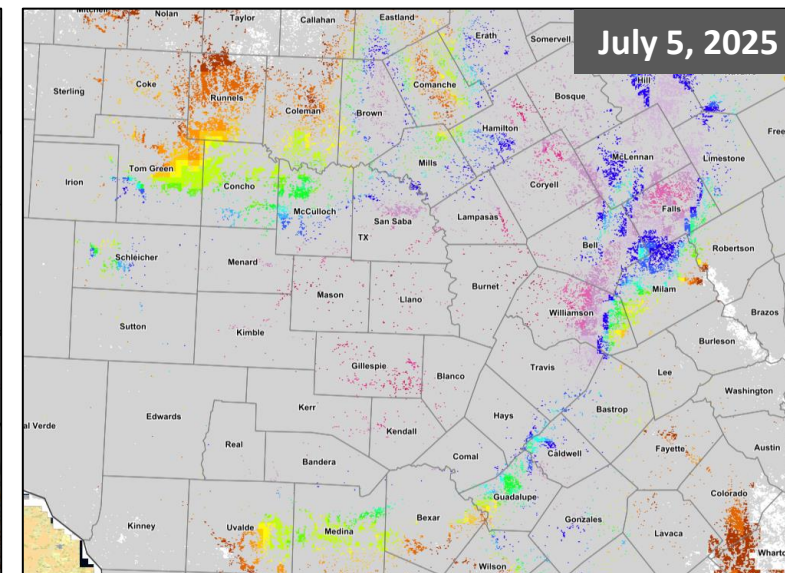
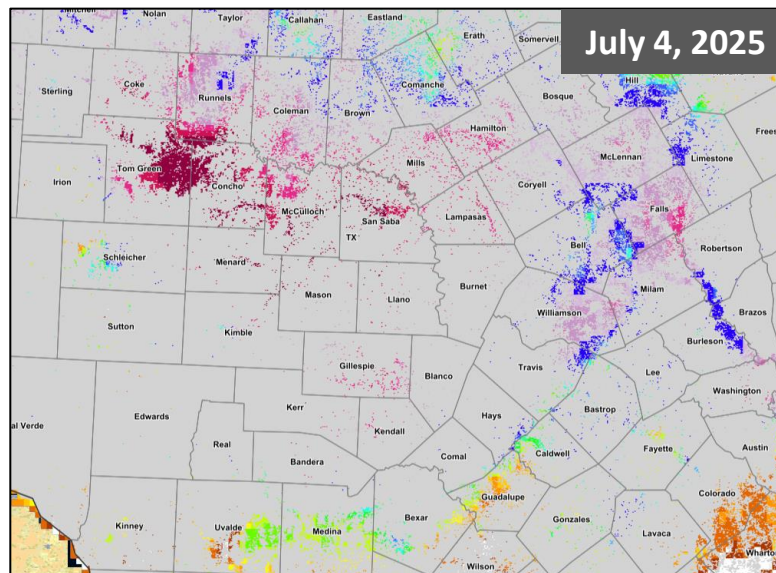
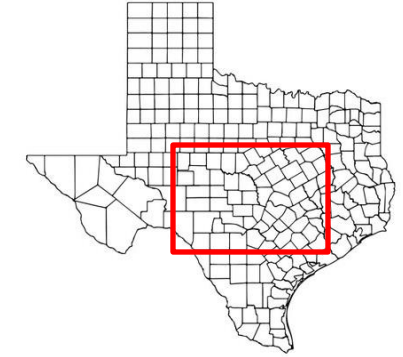
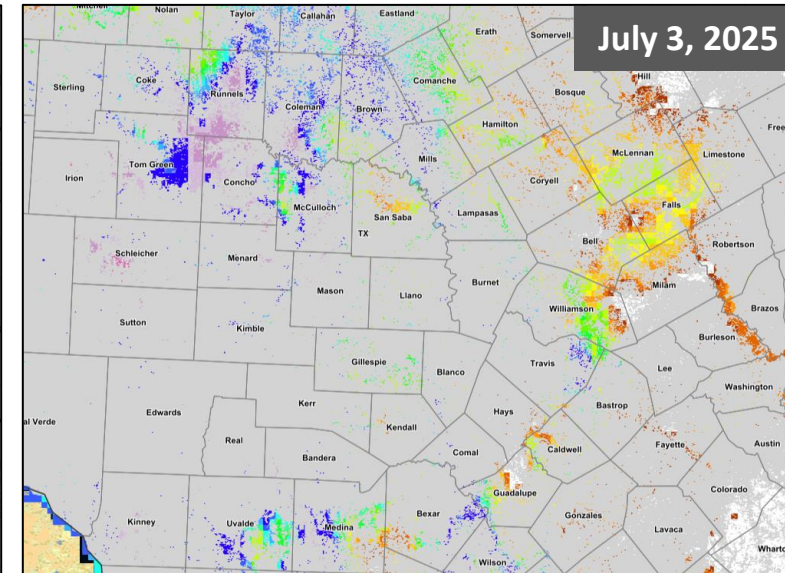
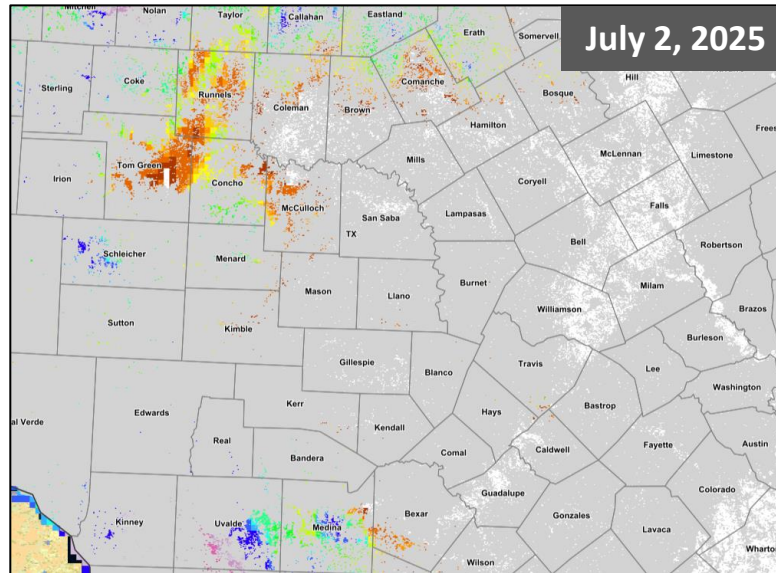
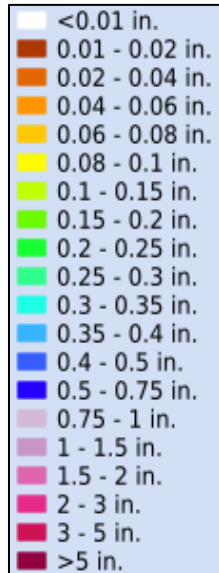
Texas Floods: 7/2 to 7/5

Daily Precipitation CoCoRaHS Data



Texas Floods: 7/2 to 7/5

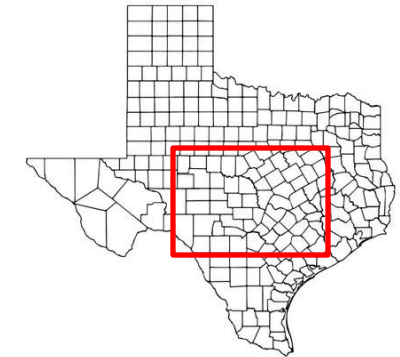
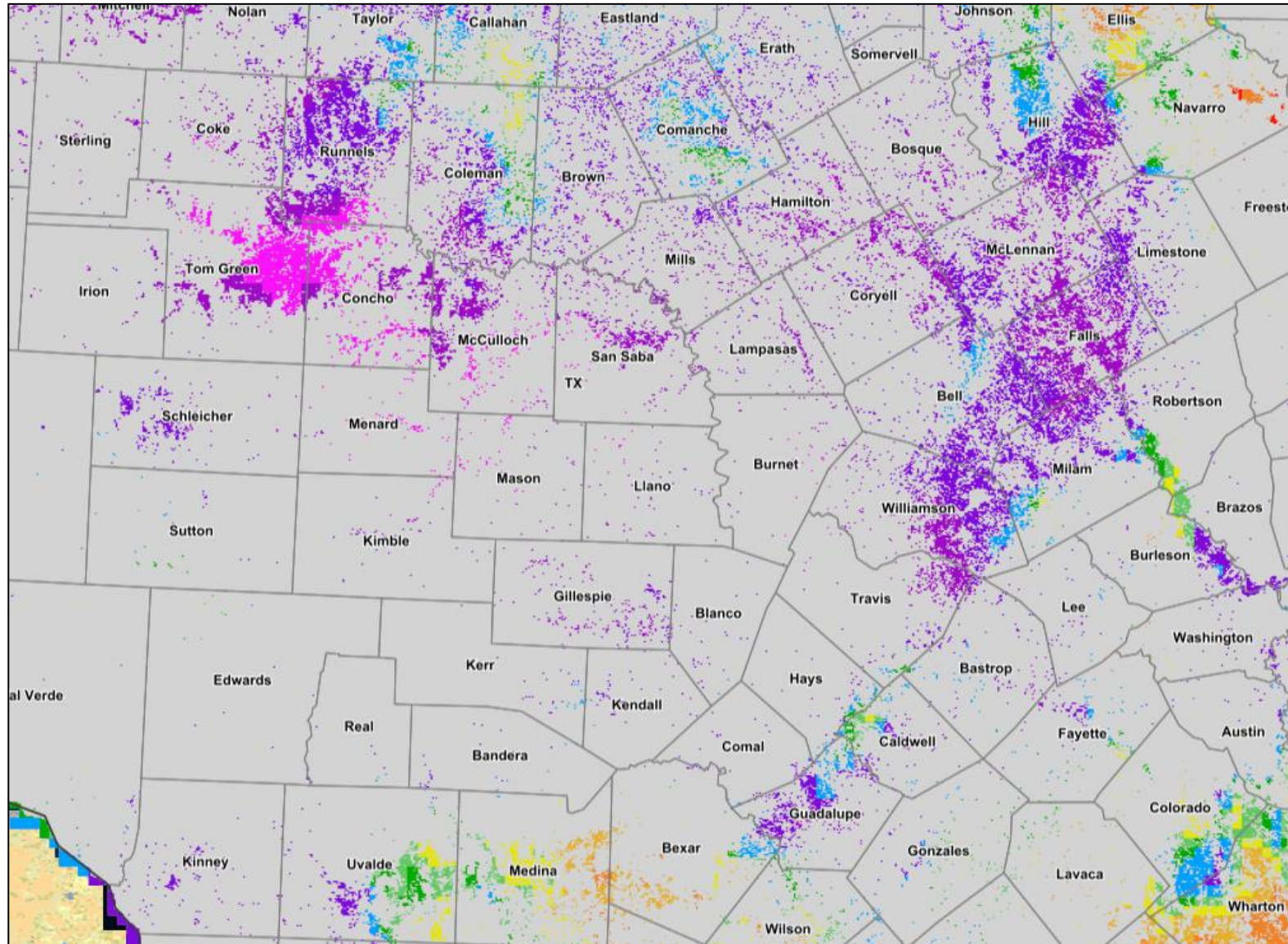
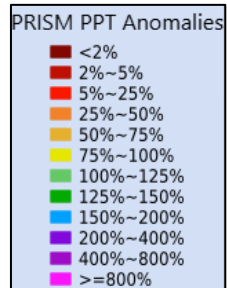
Daily Precipitation Totals Crop Mask



Precipitation data derived from
PRISM/NACSE, Oregon State
University
(<https://prism.oregonstate.edu/>)
and hosted on Crop-CASMA
enabled by NSF CropSmart grant
(<https://nassgeo.csiss.gmu.edu/CropCASMA/>)

Texas Floods: 6/30 to 7/6

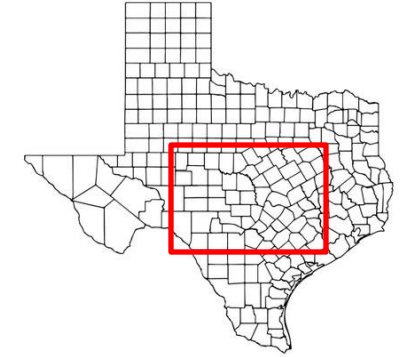
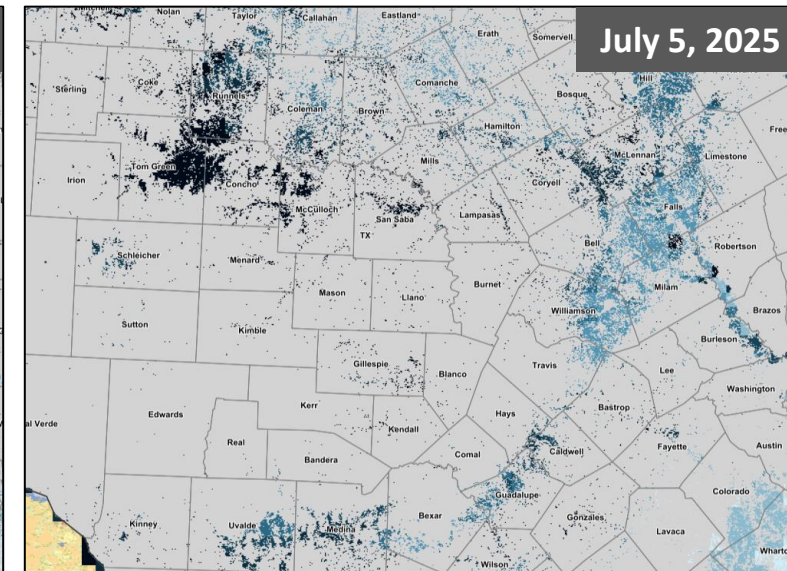
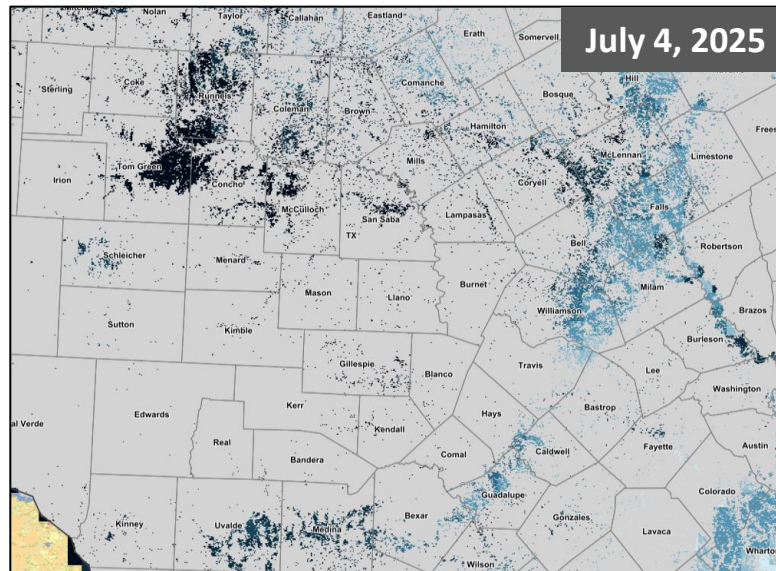
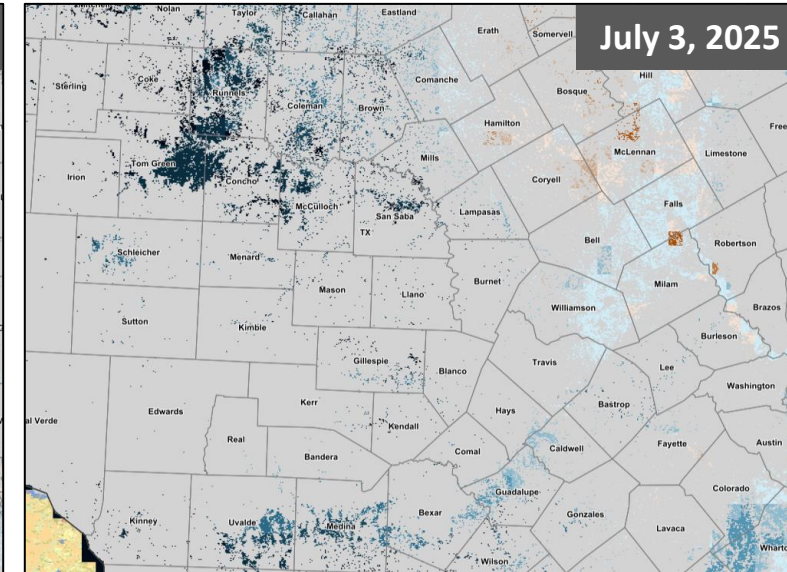
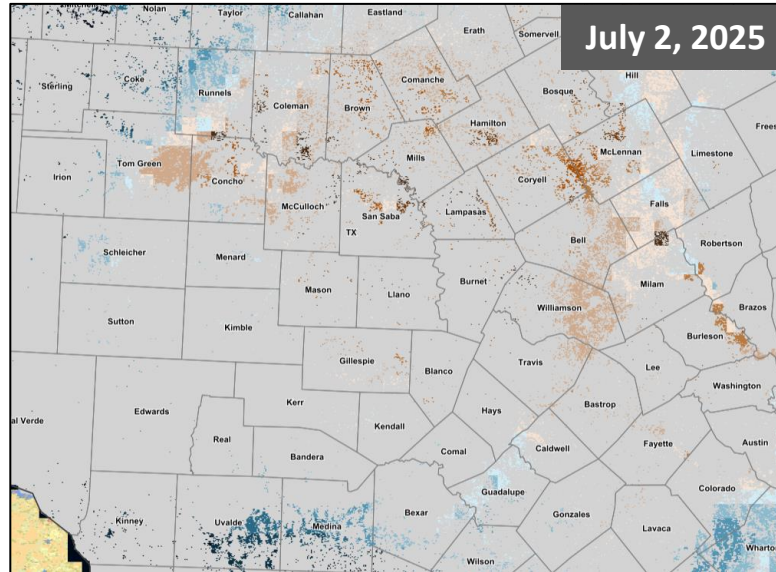
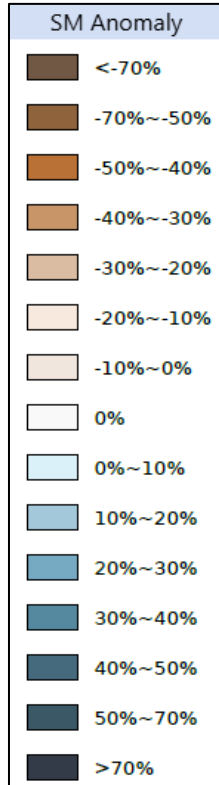
Weekly Precipitation Anomaly Crop Mask



Precipitation data derived from PRISM/NACSE, Oregon State University (<https://prism.oregonstate.edu/>) and hosted on Crop-CASMA enabled by NSF CropSmart grant (<https://nassgeo.csiss.gmu.edu/CropCASMA/>)

Texas Floods: 7/2 to 7/5

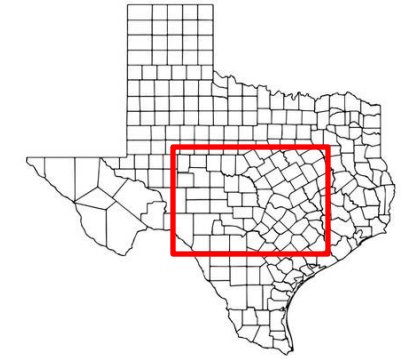
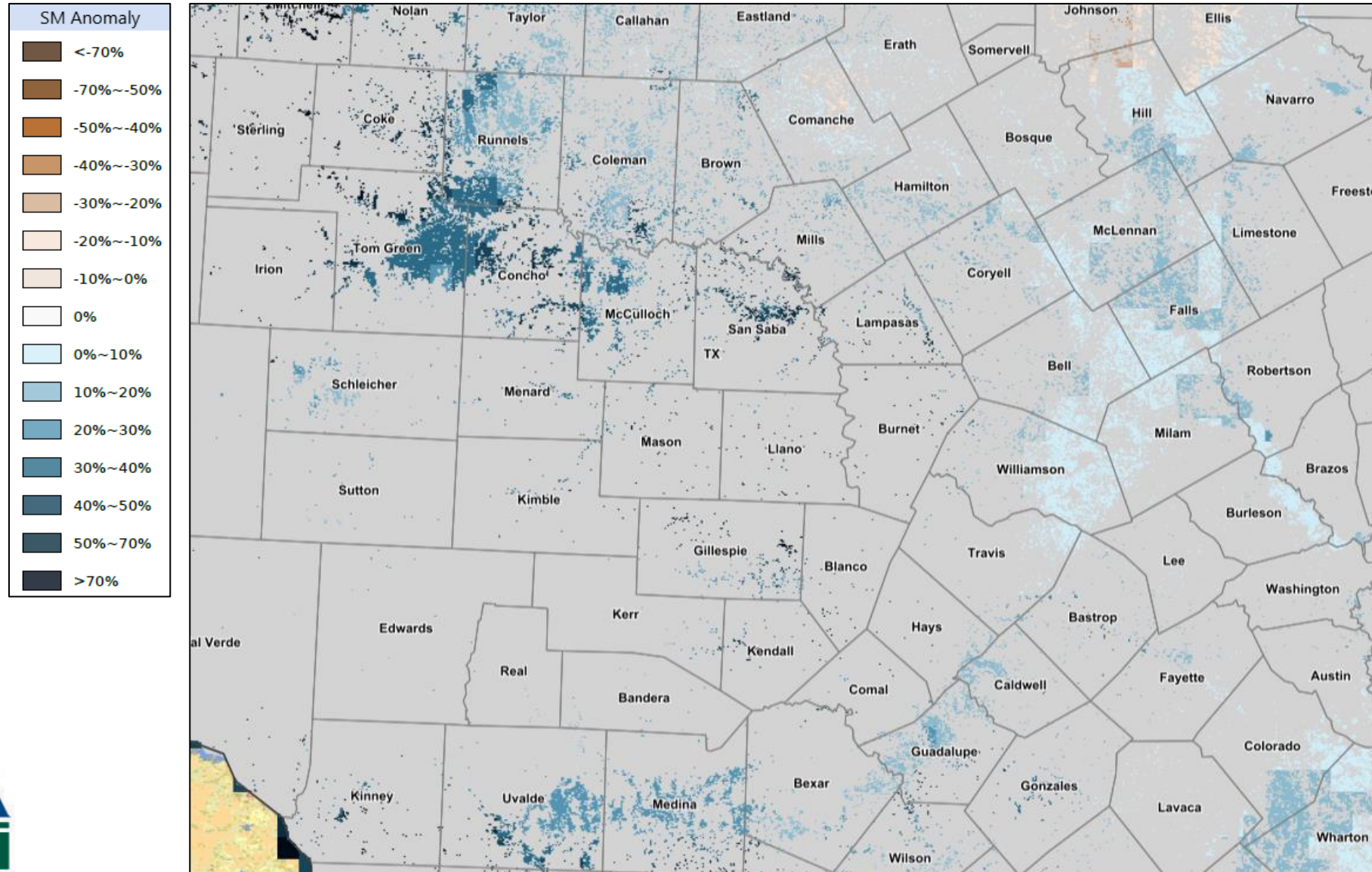
Daily Soil Moisture Anomaly Crop Mask



Data source: NASA SMAP,
hosted on Crop-CASMA
(<https://nassgeo.csiss.gmu.edu/CropCASMA/>)

Texas Floods: 6/30 to 7/6

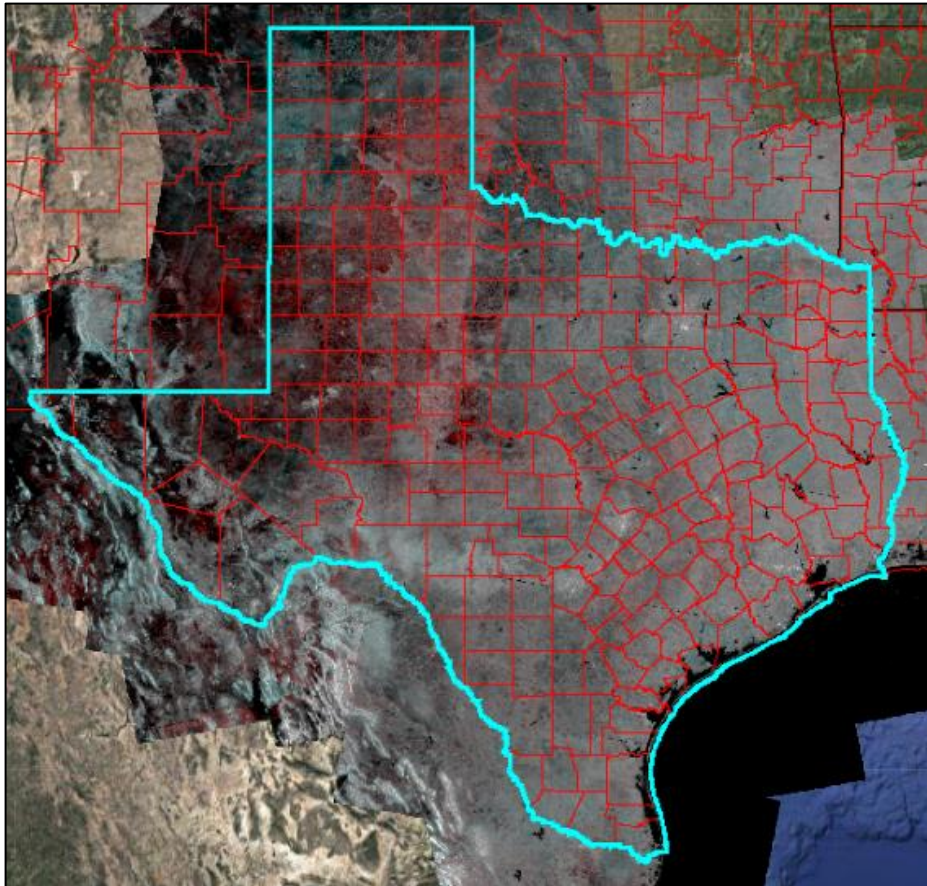
Weekly Soil Moisture Anomaly Crop Mask



Data source: NASA SMAP,
hosted on Crop-CASMA
(<https://nassgeo.csiss.gmu.edu/CropCASMA/>)

Texas Floods

Inundation Assessment Summary



- Flood detection and crop impact assessment using multi-sensor remote sensing data (Sentinel-1, Sentinel-2, Landsat 8, and Landsat 9) and the 2024 Cropland Data Layer (CDL)
- Pre-event assessment: June 1 – July 1, 2025
- Post-event assessment: July 3 – 14, 2025

Texas Floods Crop Impact Summary

| Corn Acres Impacted by 2025 TX Floods | | |
|---------------------------------------|-------------------------|----------------------------|
| County | NASS 2024 Acres Planted | Percent of Acres Impacted* |
| Bell | 69,800 | 0.99% |
| Bexar | 6,000 | 5.80% |
| Caldwell | 9,100 | 0.57% |
| Milam | 41,800 | 0.87% |
| Williamson | 98,300 | 0.52% |

| Cotton Acres Impacted by 2025 TX Floods | | |
|---|-------------------------|----------------------------|
| County | NASS 2024 Acres Planted | Percent of Acres Impacted* |
| McCulloch | 9,400 | 2.82% |
| Milam | 8,900 | 3.25% |
| Reagan | 55,700 | 0.75% |

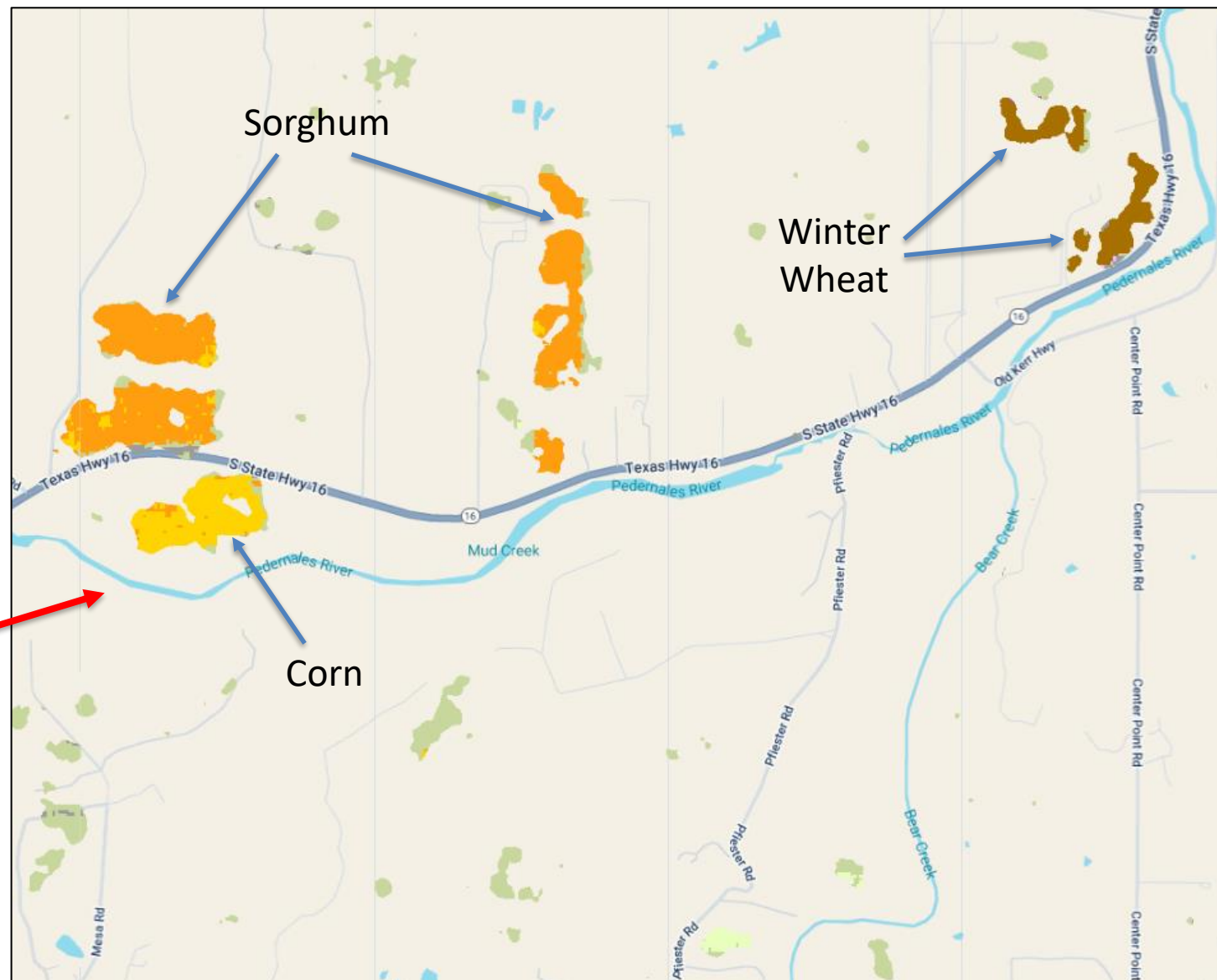
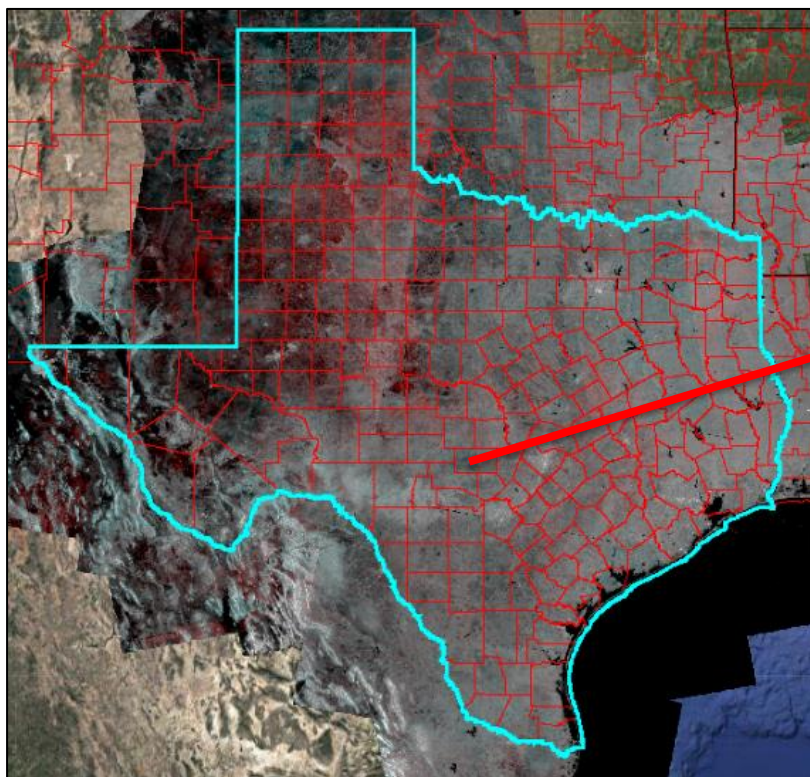
*Percent of acres impacted estimated using an updated GEE web app [RAPID V2.0 Beta \(Real-time Assessment and Prompt Inundation Detection\)](#) developed at USDA NASS, based on the 2024 CDL planted acres, and are not official NASS estimates.



[RAPID V2.0 Beta \(Real-time Assessment and Prompt Inundation Detection\)](#)

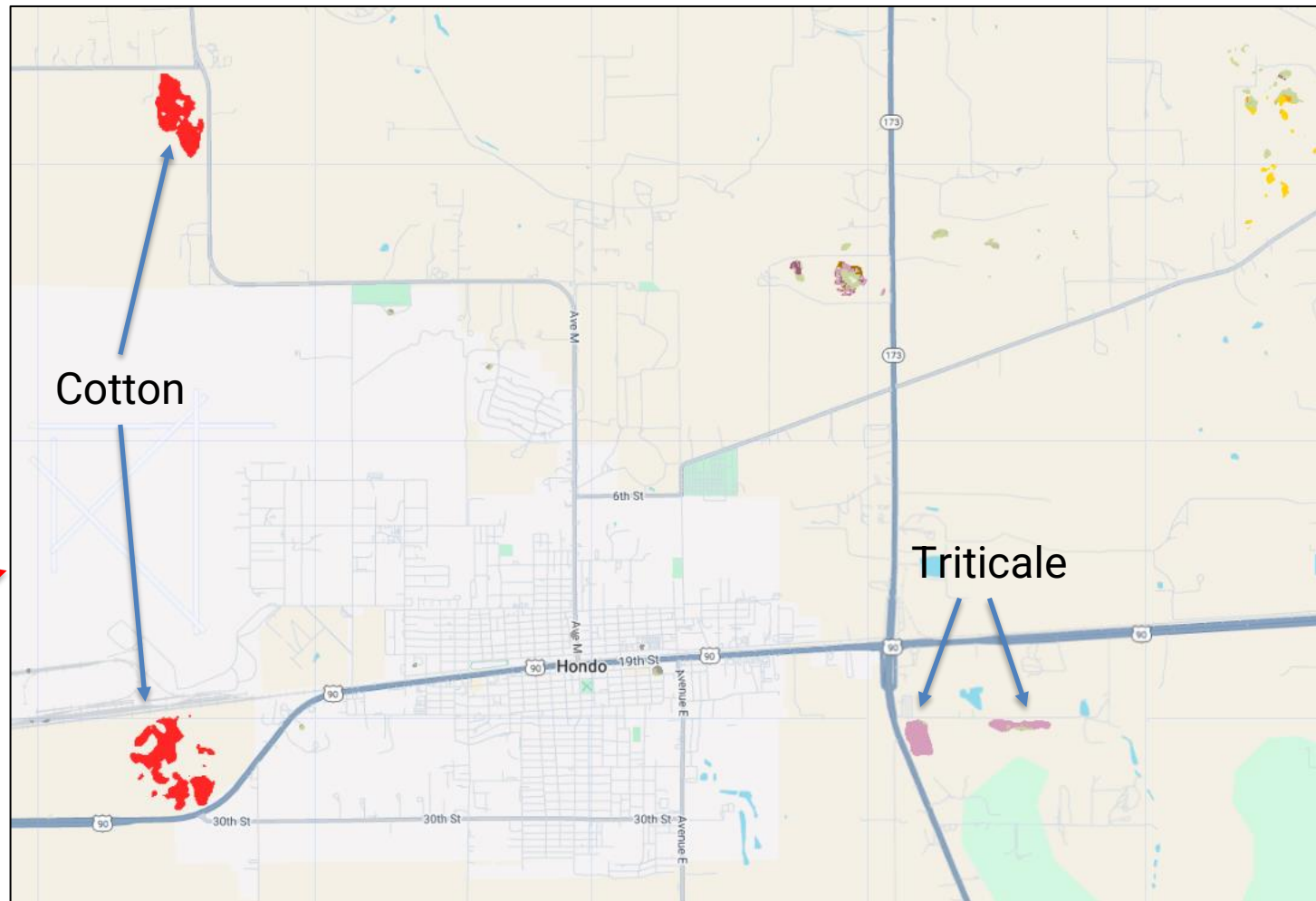
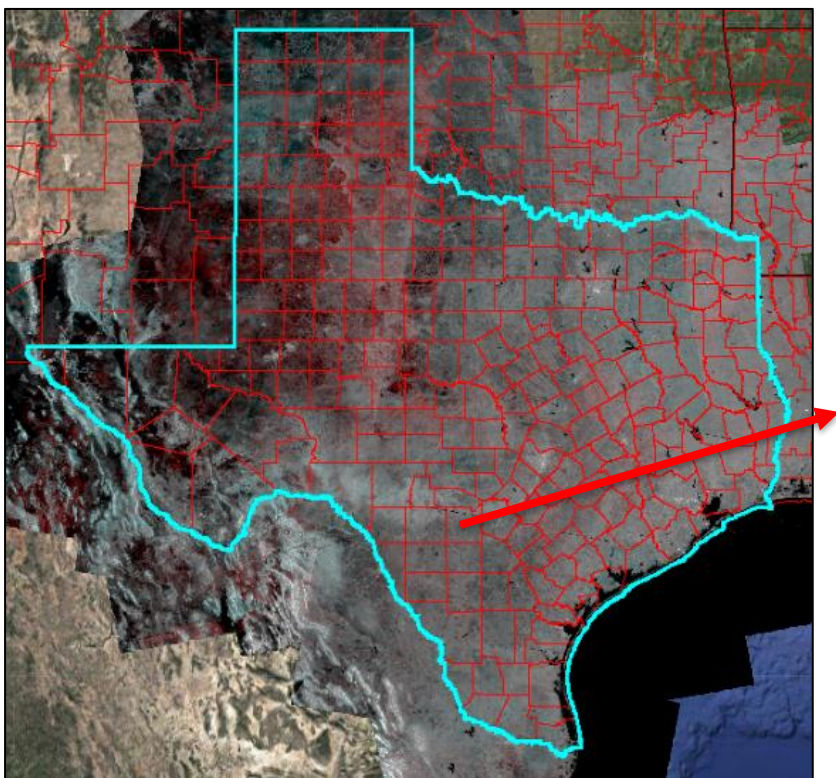


Texas Floods Inundated Crop Example



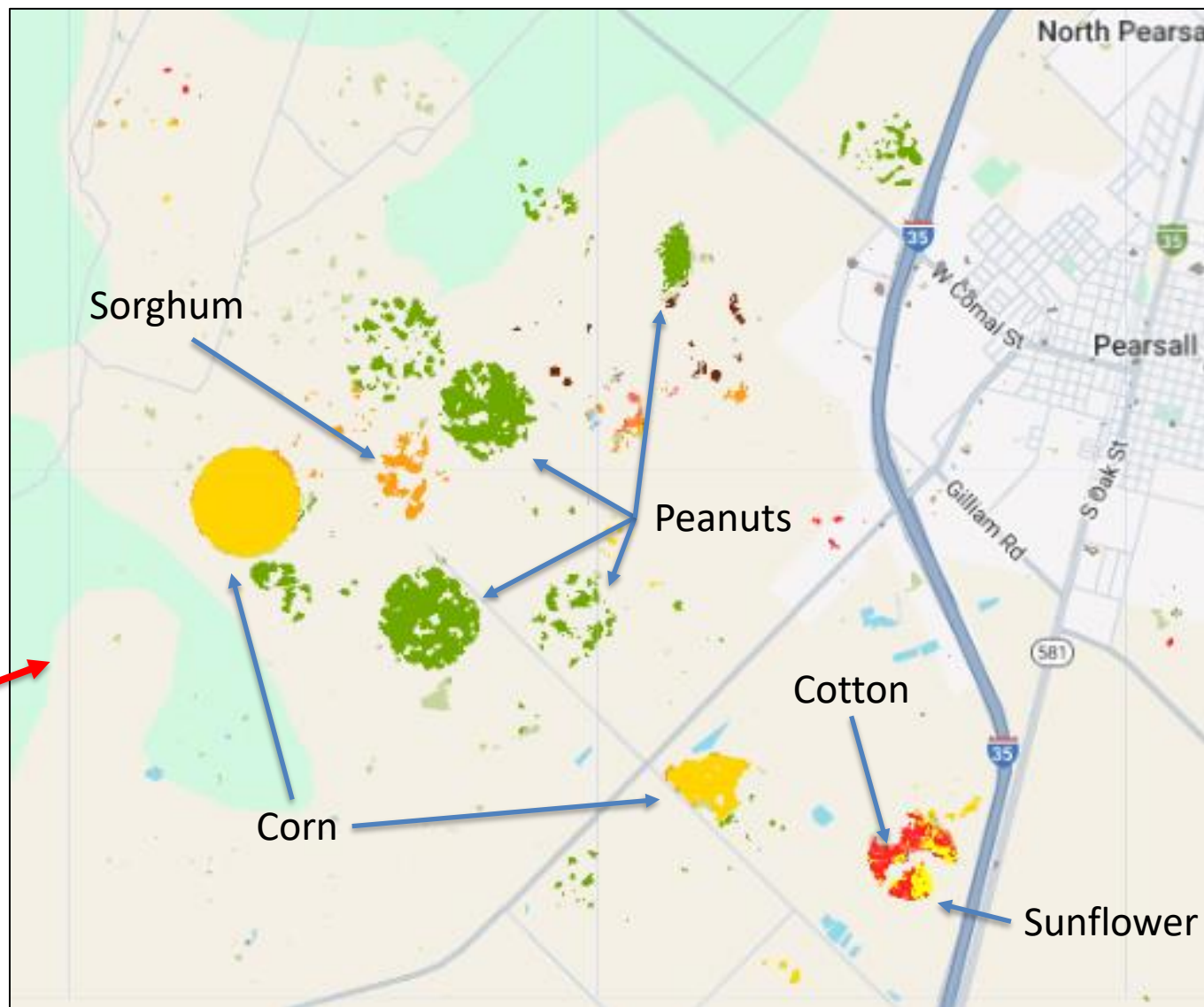
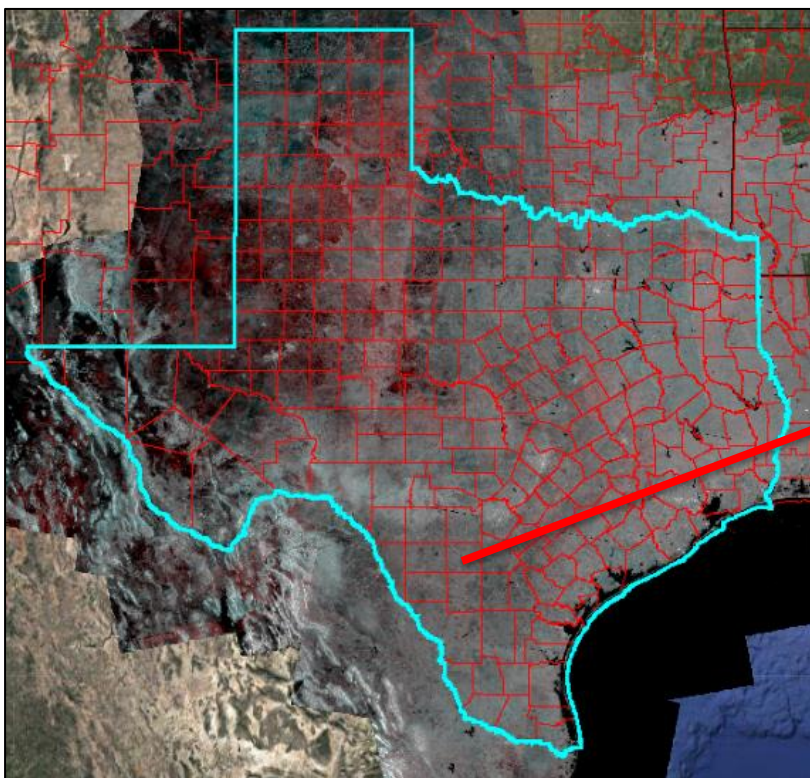
Inundated cropland in Gillespie County near Morris Ranch

Texas Floods Inundated Crop Example



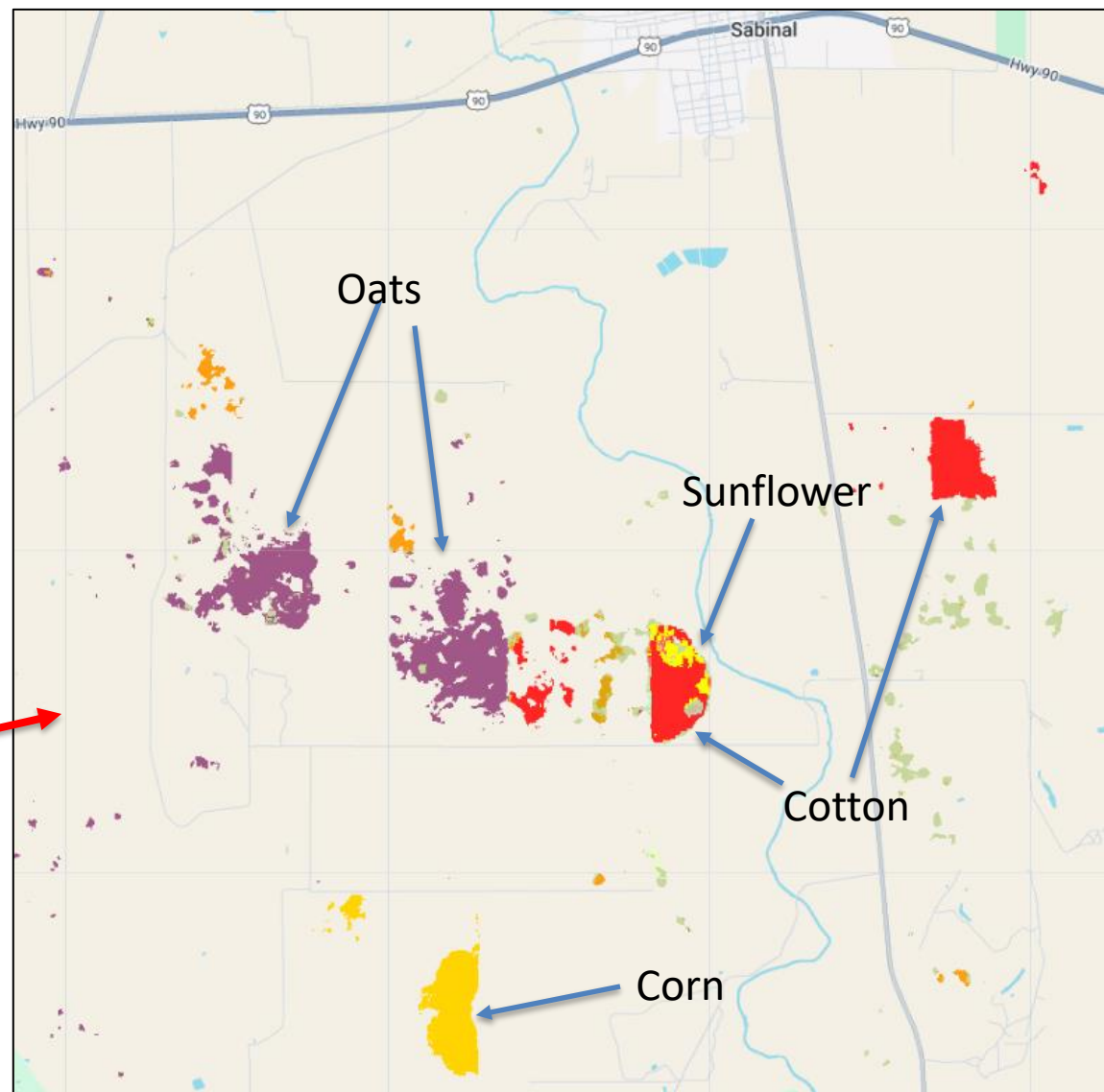
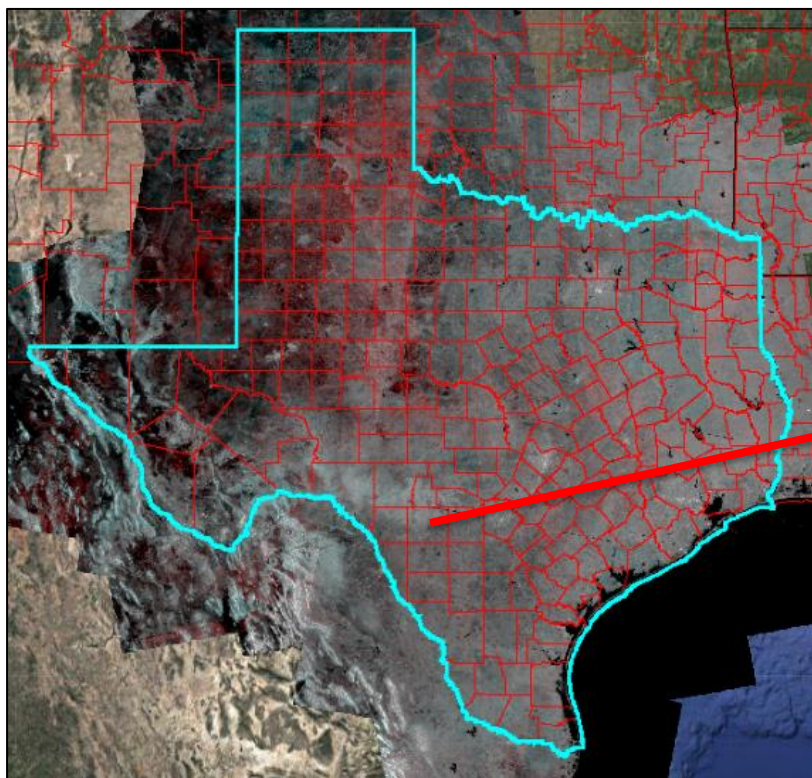
Inundated cropland in Medina County near Hondo

Texas Floods Inundated Crop Example



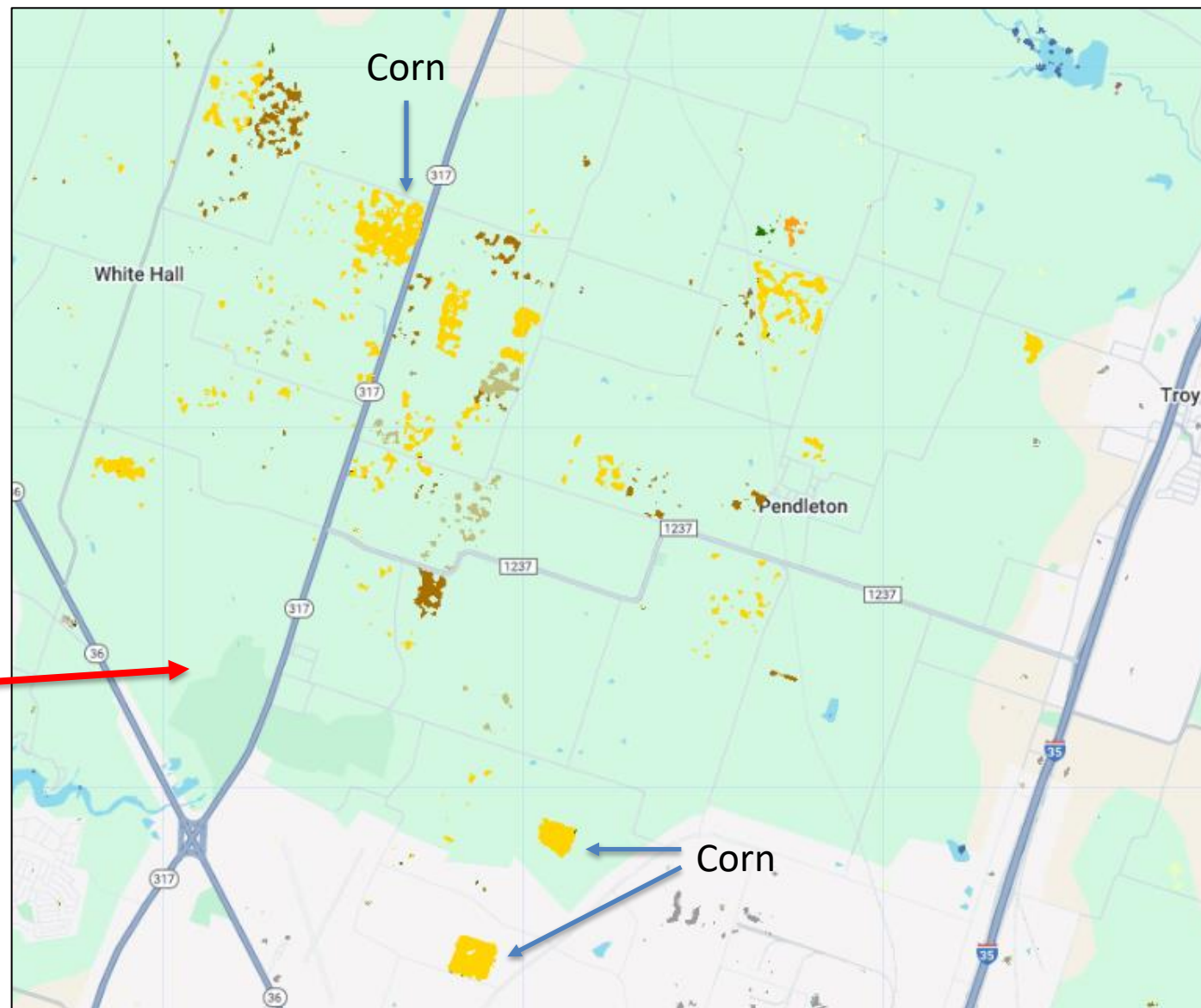
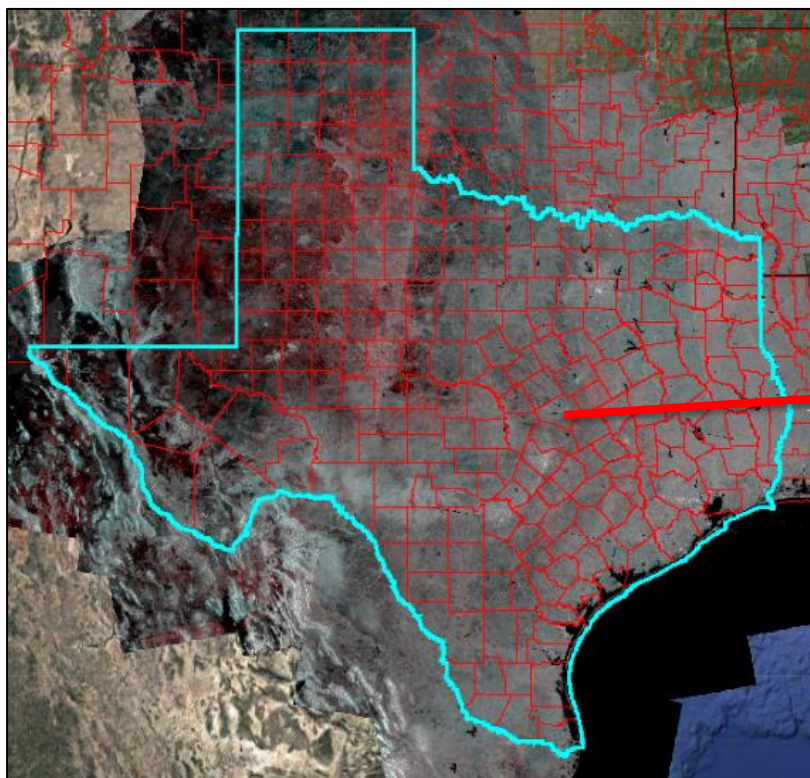
Inundated cropland in Frio County near Pearsall

Texas Floods Inundated Crop Example



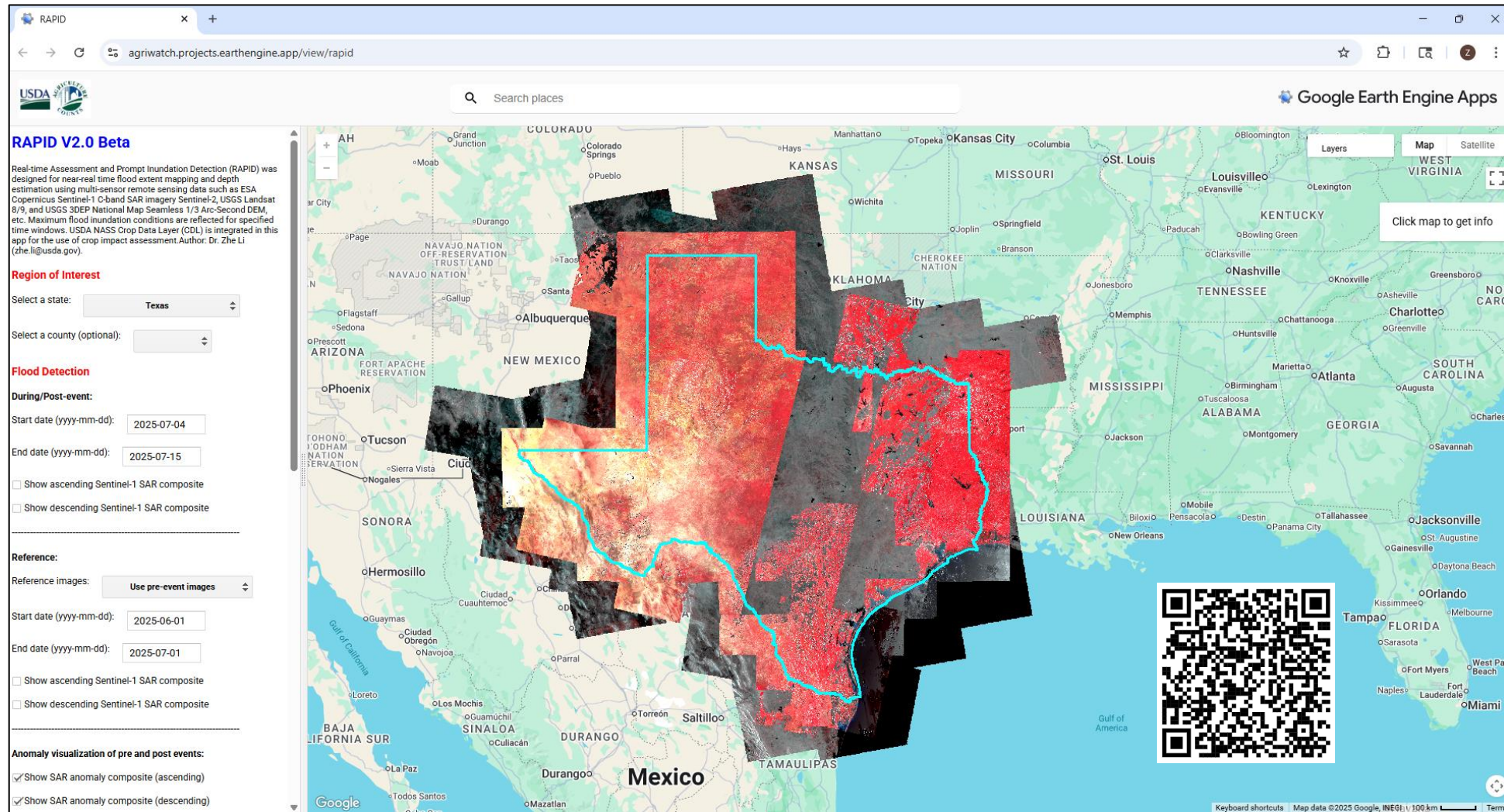
Inundated cropland in Uvalde County near Sabinal

Texas Floods Inundated Crop Example



Inundated cropland in Bell County near White Hall

RAPID V2.0 Beta - Real-time Assessment and Prompt Inundation Detection



[RAPID V2.0 Beta \(Real-time Assessment and Prompt Inundation Detection\)](#)