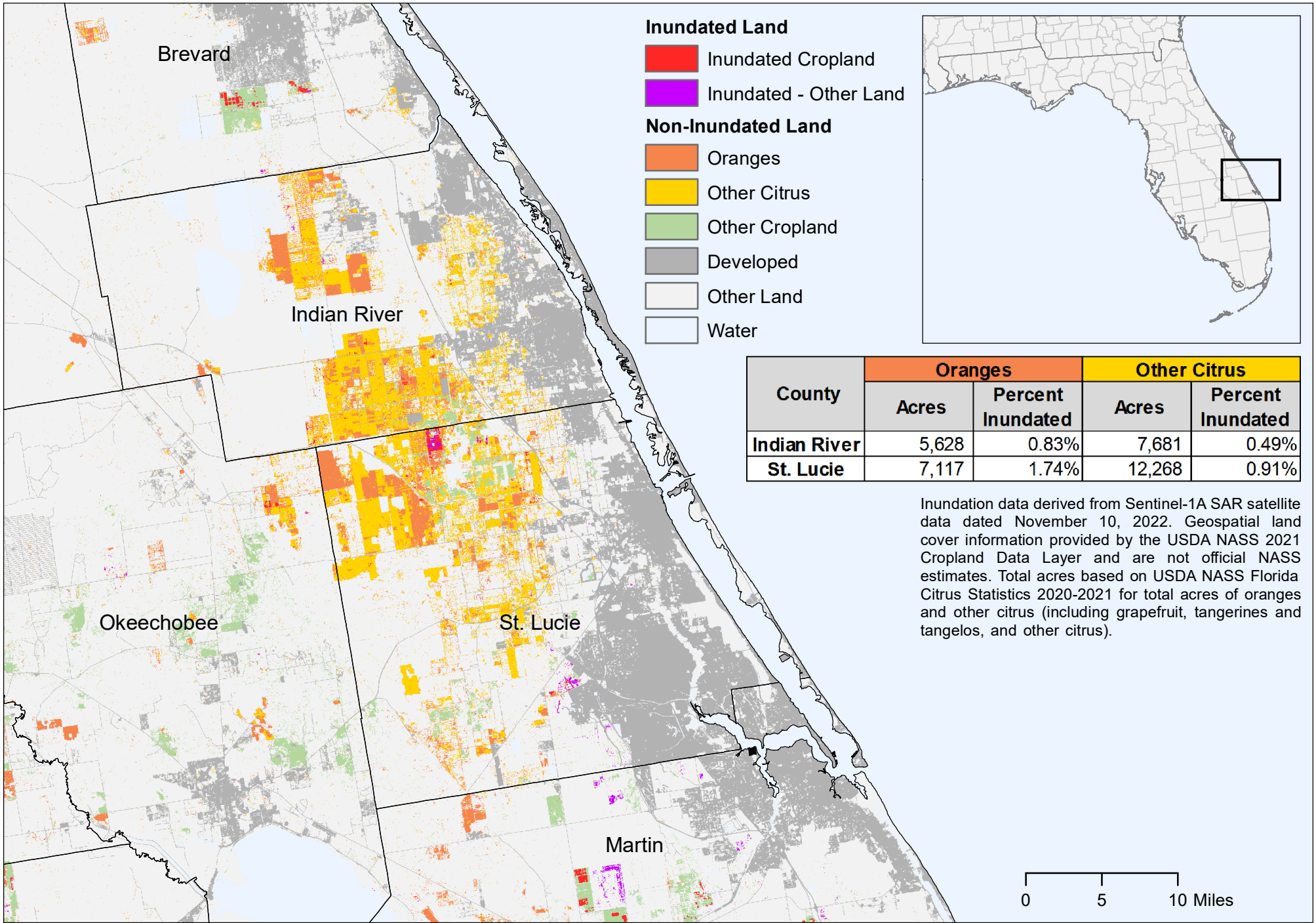


Agriculture Affected by Hurricane Nicole Flooding in Florida: November 2022



- Inundated Land**
- Inundated Cropland
 - Inundated - Other Land
- Non-Inundated Land**
- Oranges
 - Other Citrus
 - Other Cropland
 - Developed
 - Other Land
 - Water

County	Oranges		Other Citrus	
	Acres	Percent Inundated	Acres	Percent Inundated
Indian River	5,628	0.83%	7,681	0.49%
St. Lucie	7,117	1.74%	12,268	0.91%

Inundation data derived from Sentinel-1A SAR satellite data dated November 10, 2022. Geospatial land cover information provided by the USDA NASS 2021 Cropland Data Layer and are not official NASS estimates. Total acres based on USDA NASS Florida Citrus Statistics 2020-2021 for total acres of oranges and other citrus (including grapefruit, tangerines and tangels, and other citrus).

