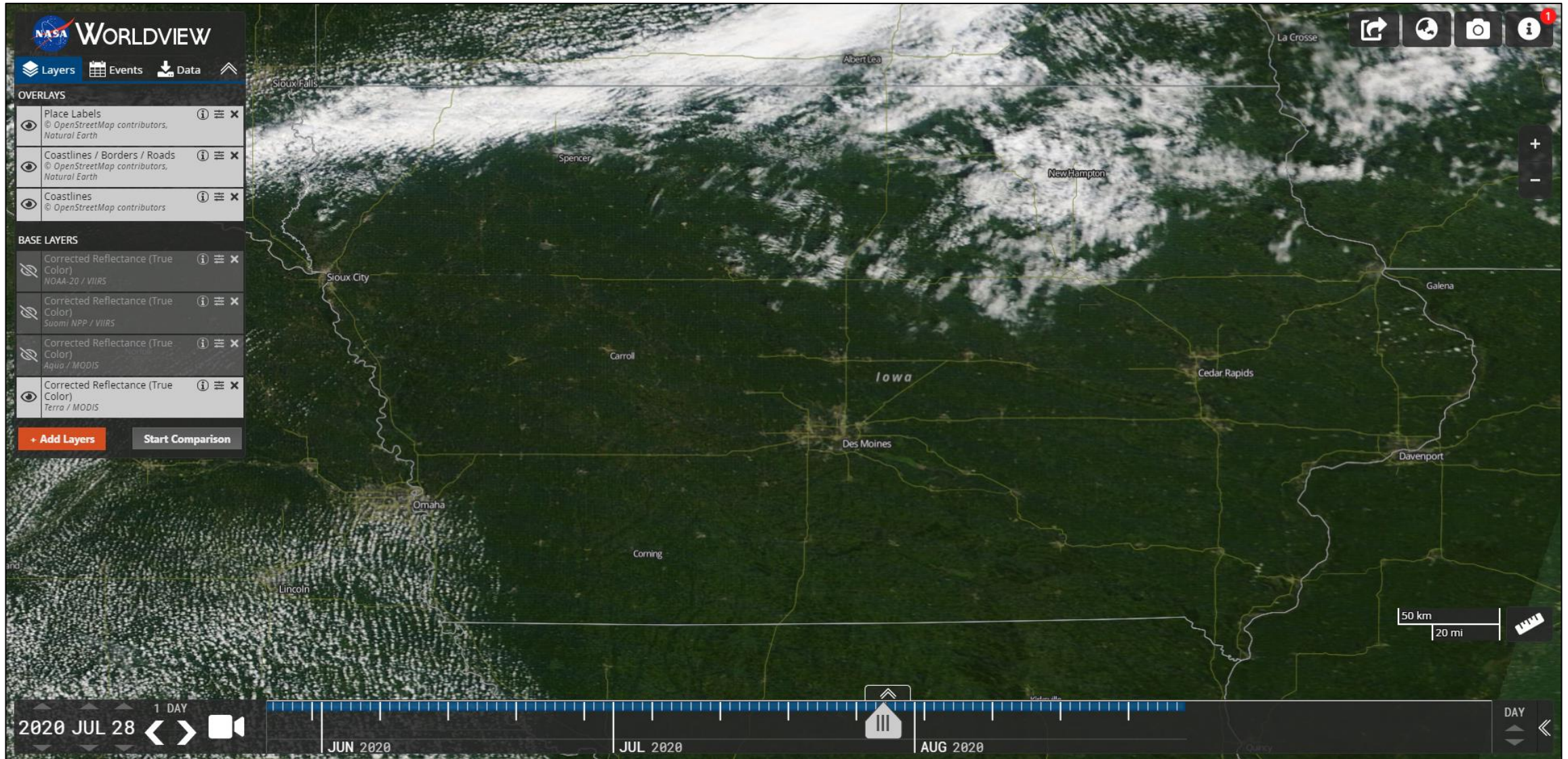


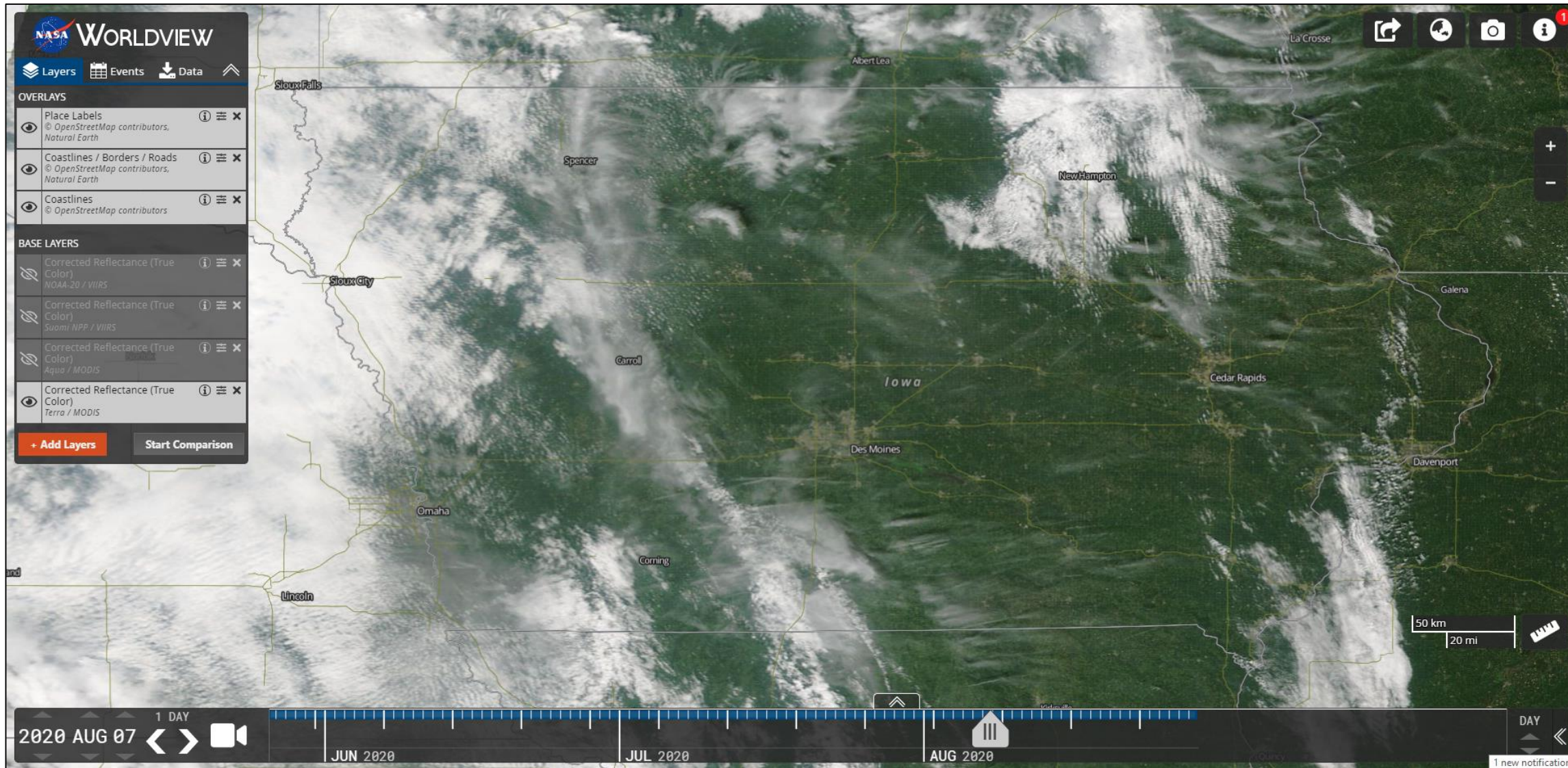
Iowa Derecho – July 28, 2020

Worldview: <https://worldview.earthdata.nasa.gov/>



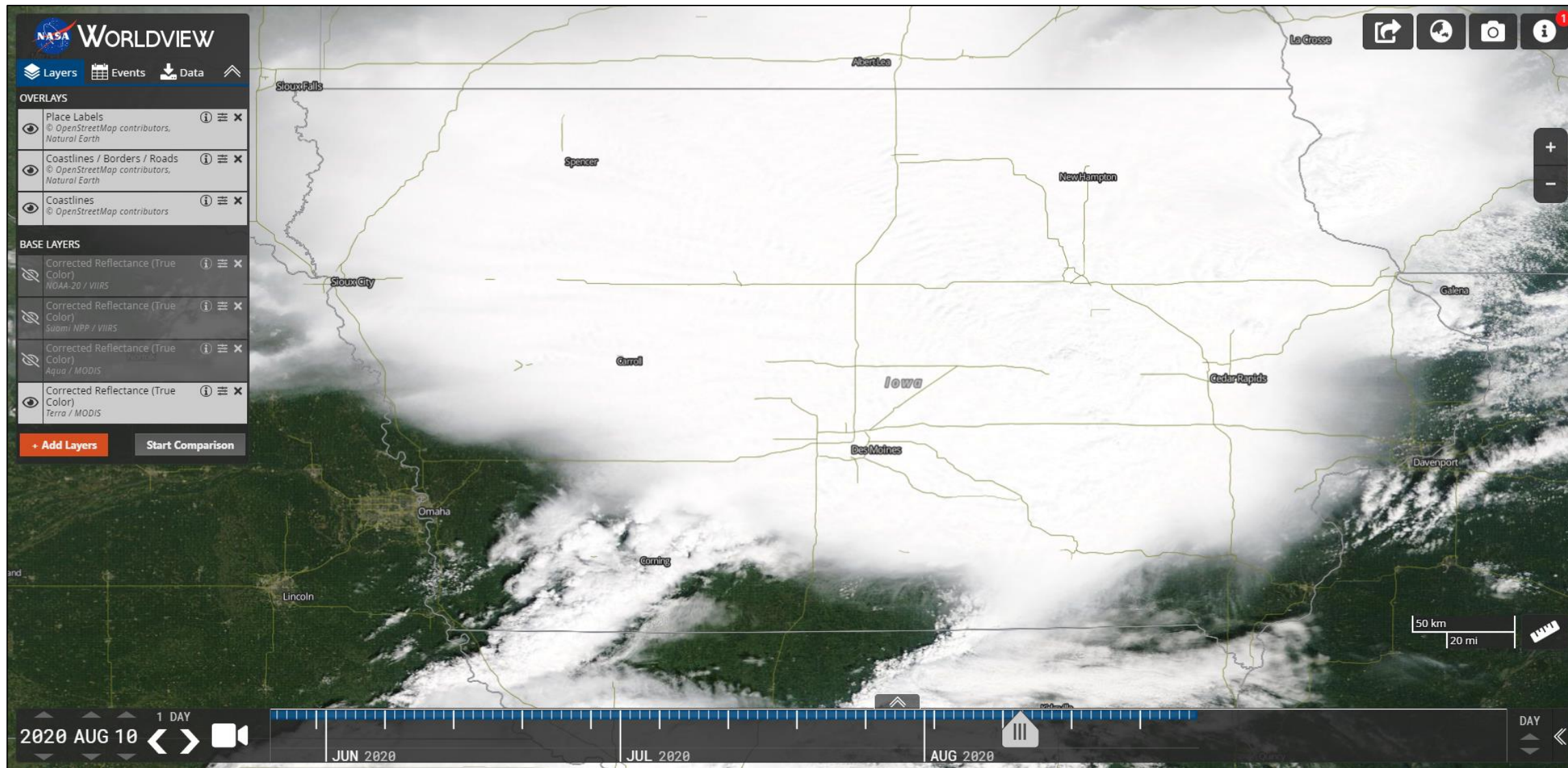
Iowa Derecho - August 7, 2020

Worldview: <https://worldview.earthdata.nasa.gov/>



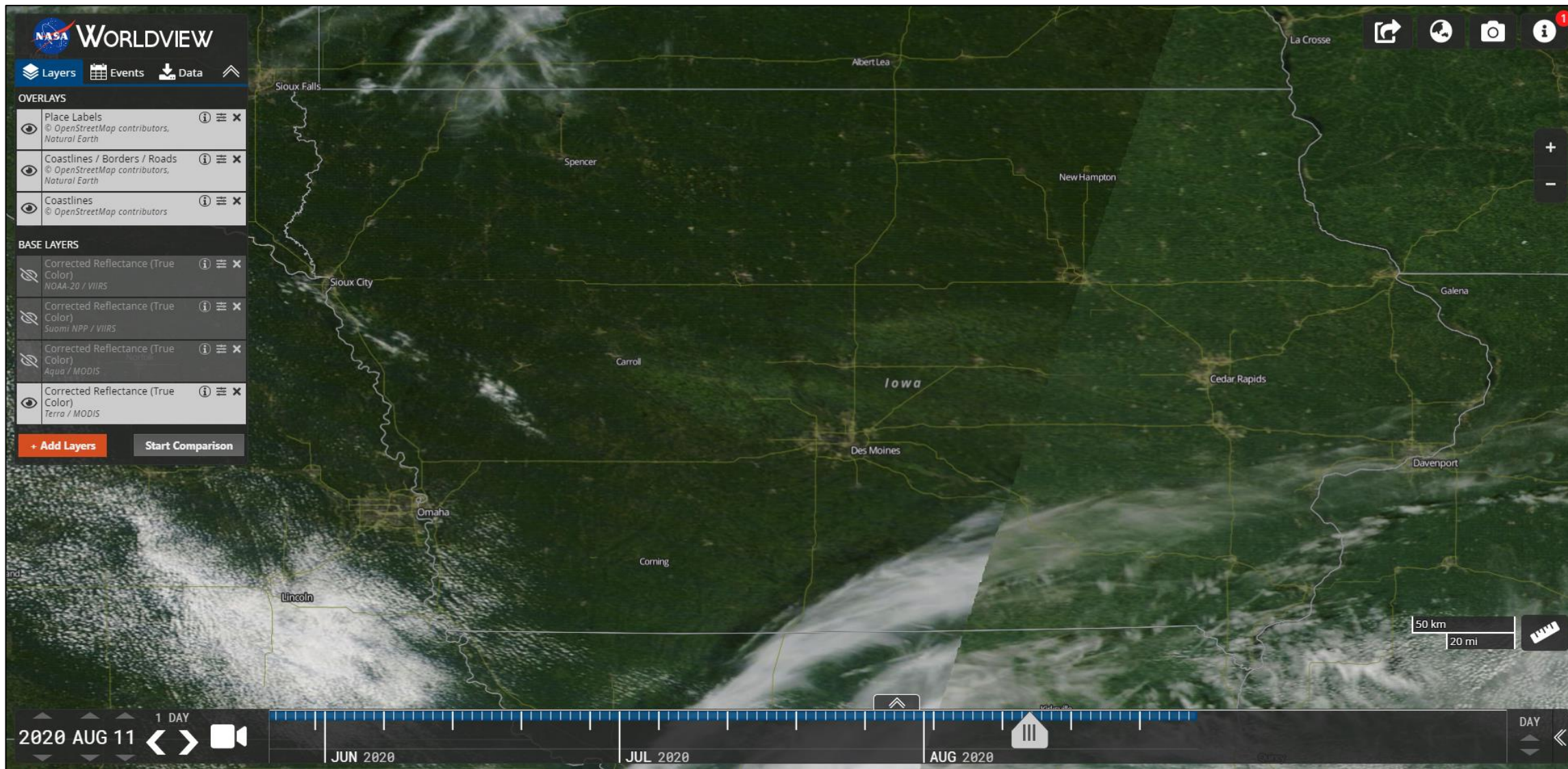
Iowa Derecho - August 10, 2020

Worldview: <https://worldview.earthdata.nasa.gov/>



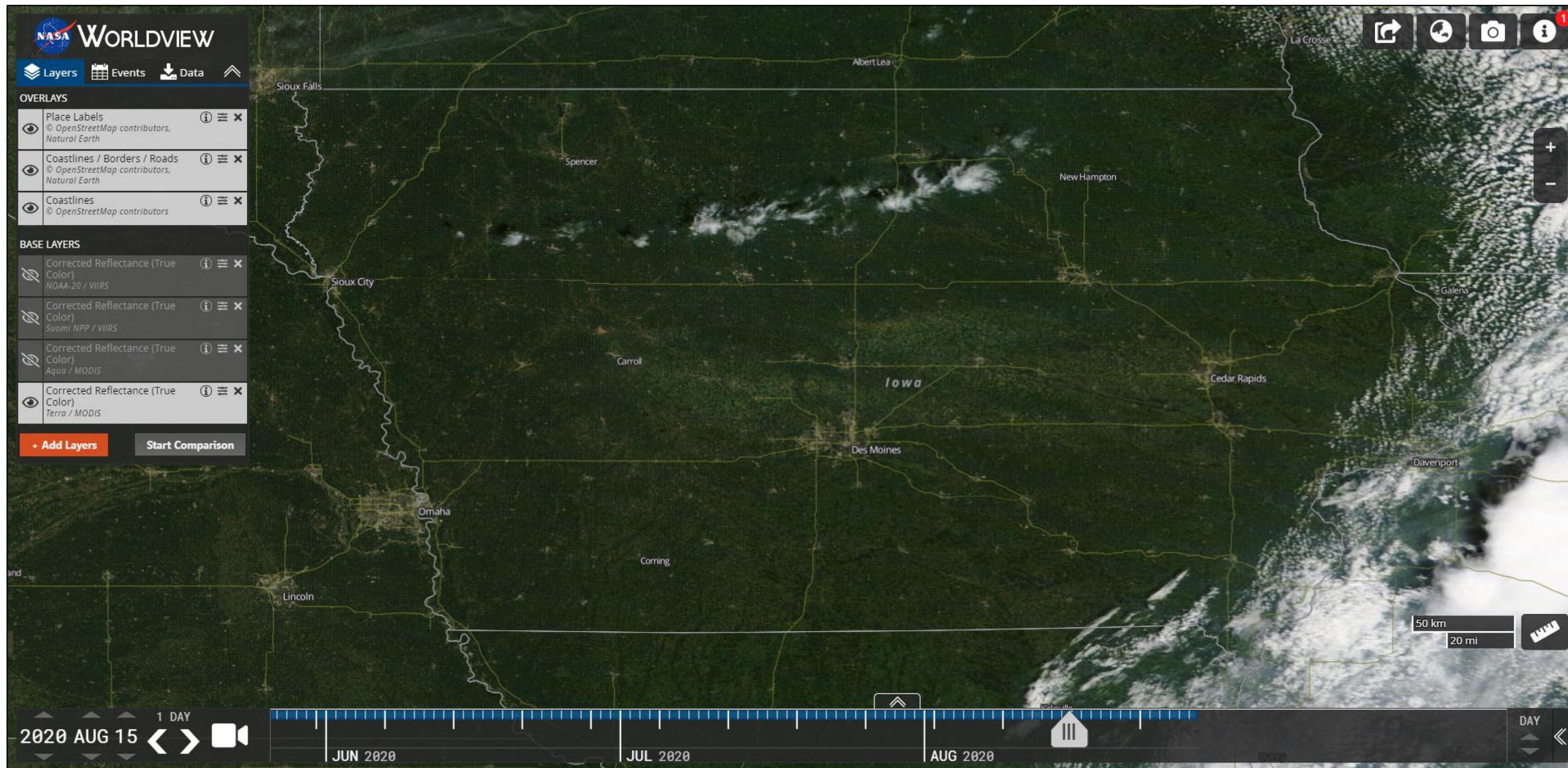
Iowa Derecho - August 11, 2020

Worldview: <https://worldview.earthdata.nasa.gov/>



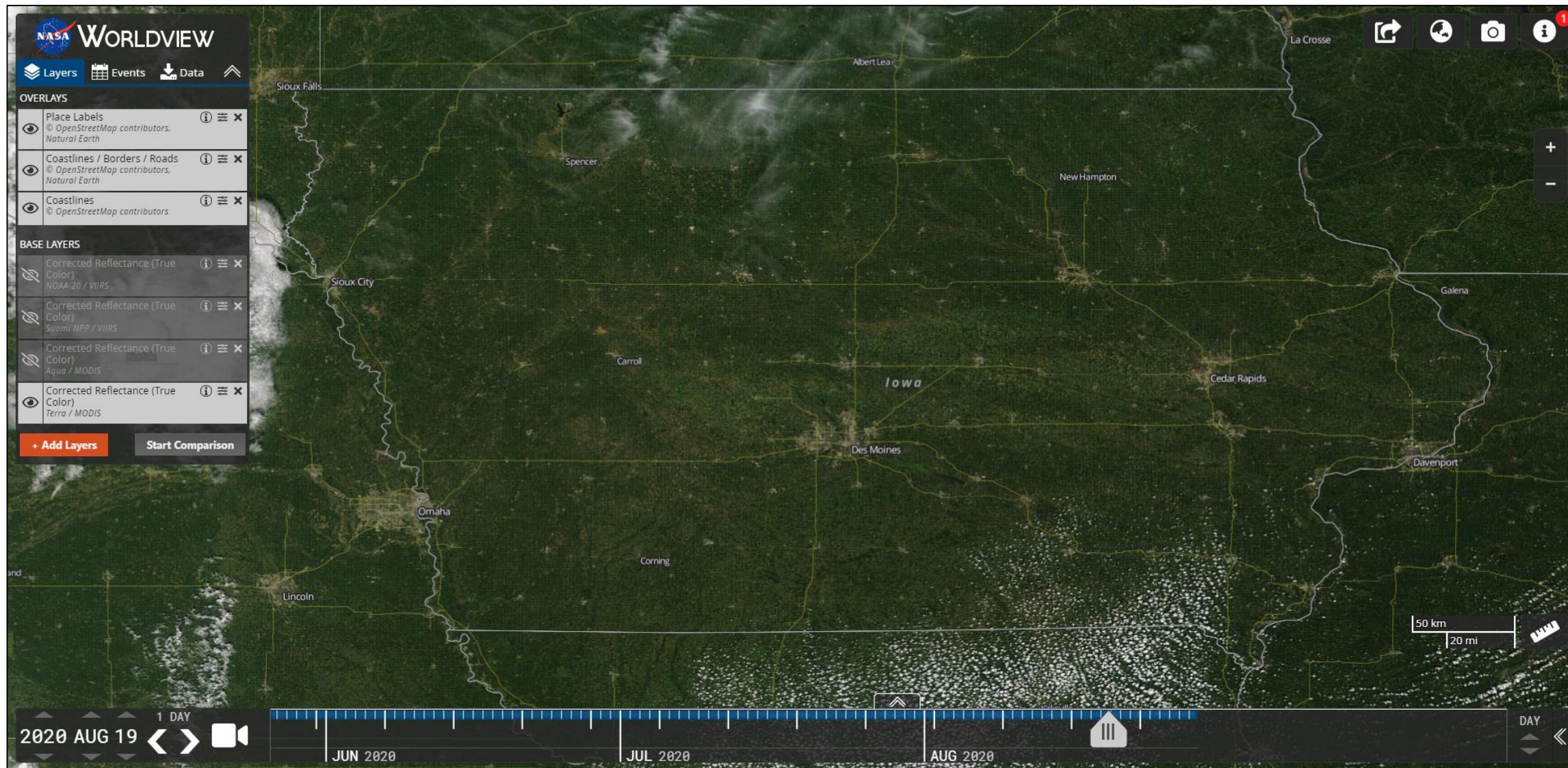
Iowa Derecho - August 15, 2020

Worldview: <https://worldview.earthdata.nasa.gov/>



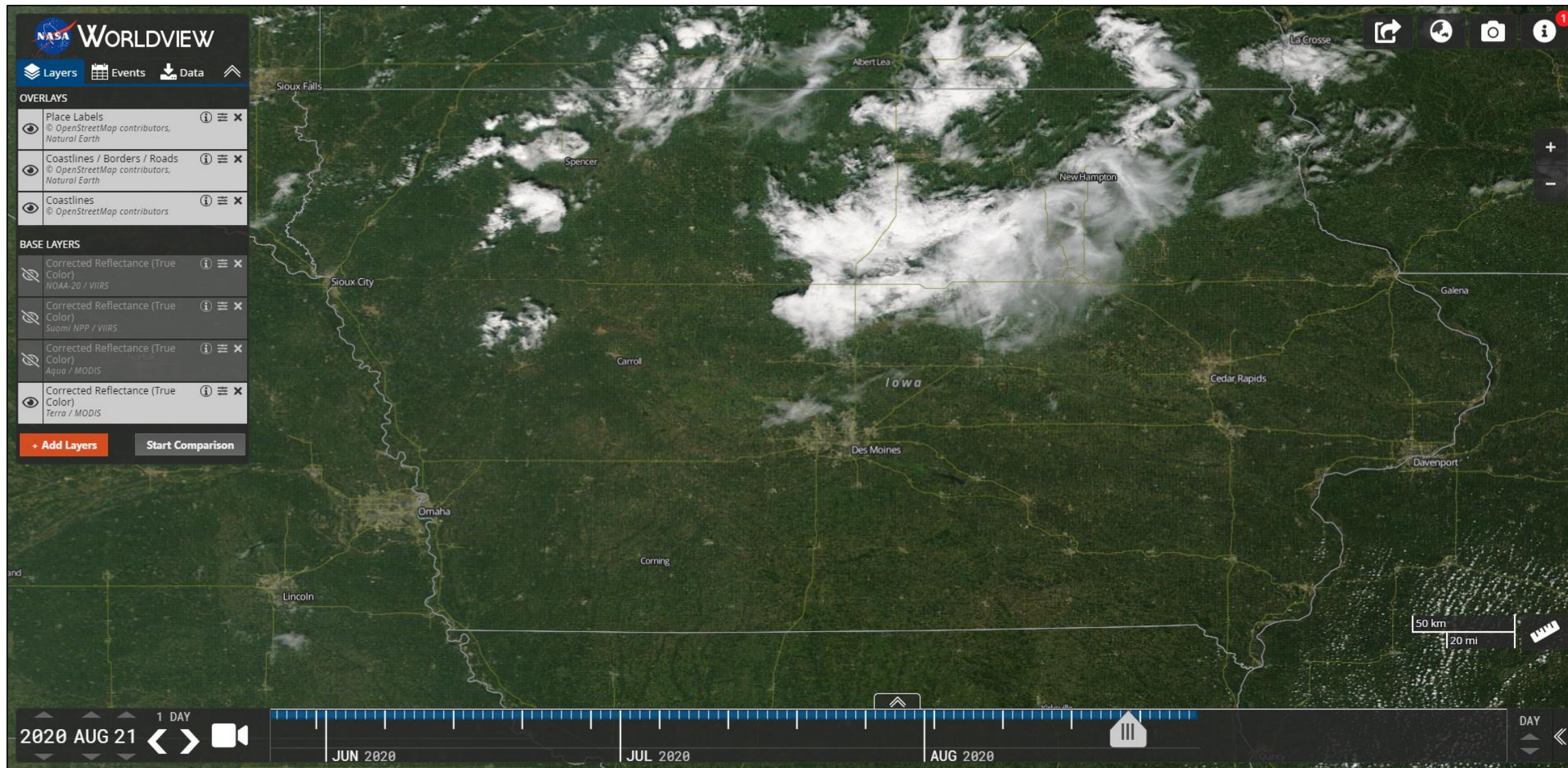
Iowa Derecho - August 19, 2020

Worldview: <https://worldview.earthdata.nasa.gov/>



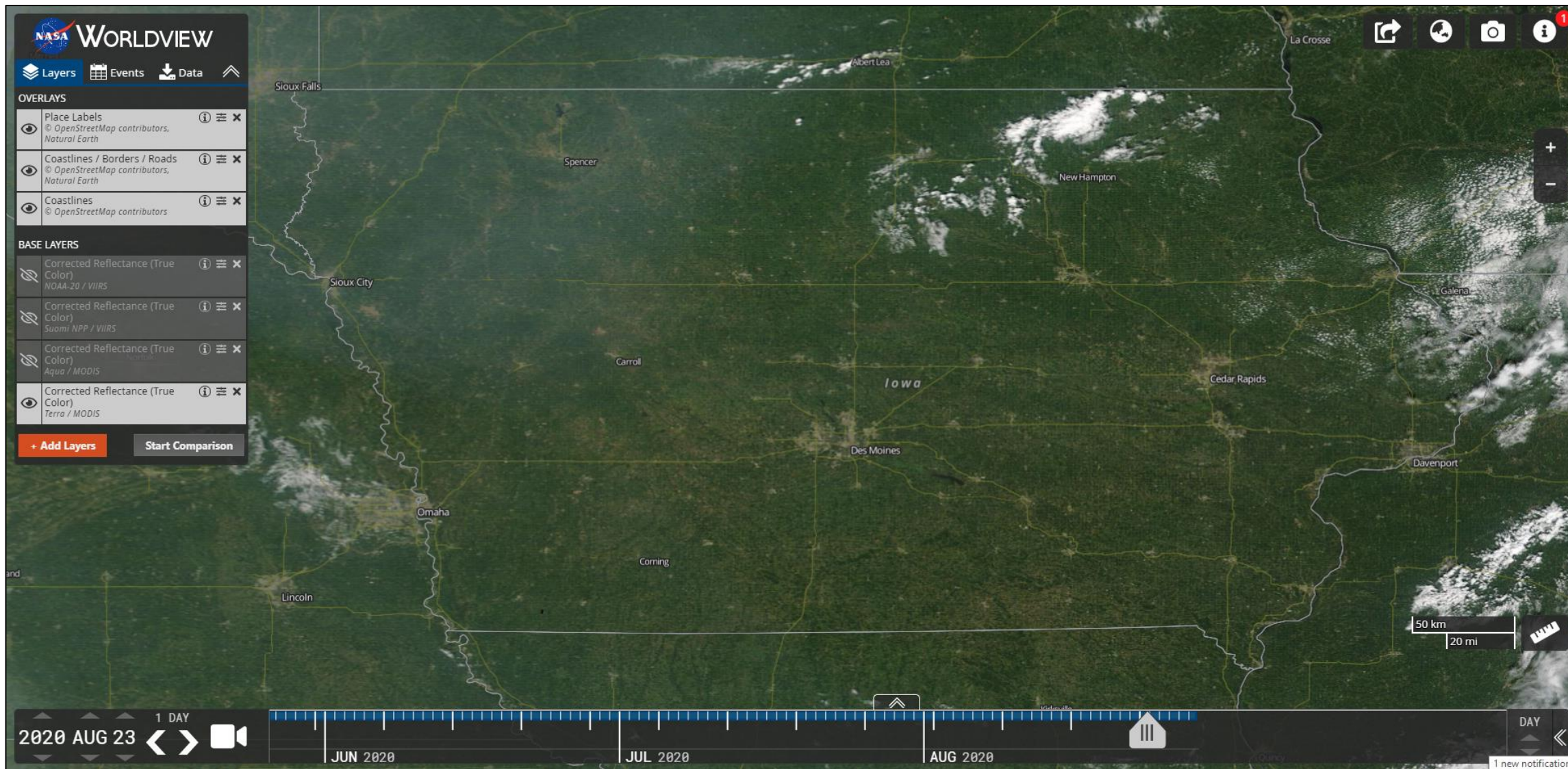
Iowa Derecho - August 21, 2020

Worldview: <https://worldview.earthdata.nasa.gov/>



Iowa Derecho - August 23, 2020

Worldview: <https://worldview.earthdata.nasa.gov/>



Iowa Derecho - August 26, 2020

Worldview: <https://worldview.earthdata.nasa.gov/>

The screenshot displays the NASA Worldview web application interface. The main map shows a satellite view of Iowa, with a white line indicating the path of a derecho event on August 26, 2020. The event path starts near the western border of Iowa and moves eastward, passing through major cities like Des Moines and Cedar Rapids. The interface includes a left-hand sidebar with a 'Layers' panel containing 'OVERLAYS' (Place Labels, Coastlines / Borders / Roads, Coastlines) and 'BASE LAYERS' (Corrected Reflectance from NOAA-20, Suomi NPP, Aqua, and Terra). The top right corner features navigation icons for home, search, camera, and a notification badge. The bottom of the interface shows a timeline for August 2020, with the current date set to 2020 AUG 26 and a '1 DAY' time interval. A scale bar in the bottom right indicates 50 km and 20 miles. A '1 new notification' badge is visible in the bottom right corner.