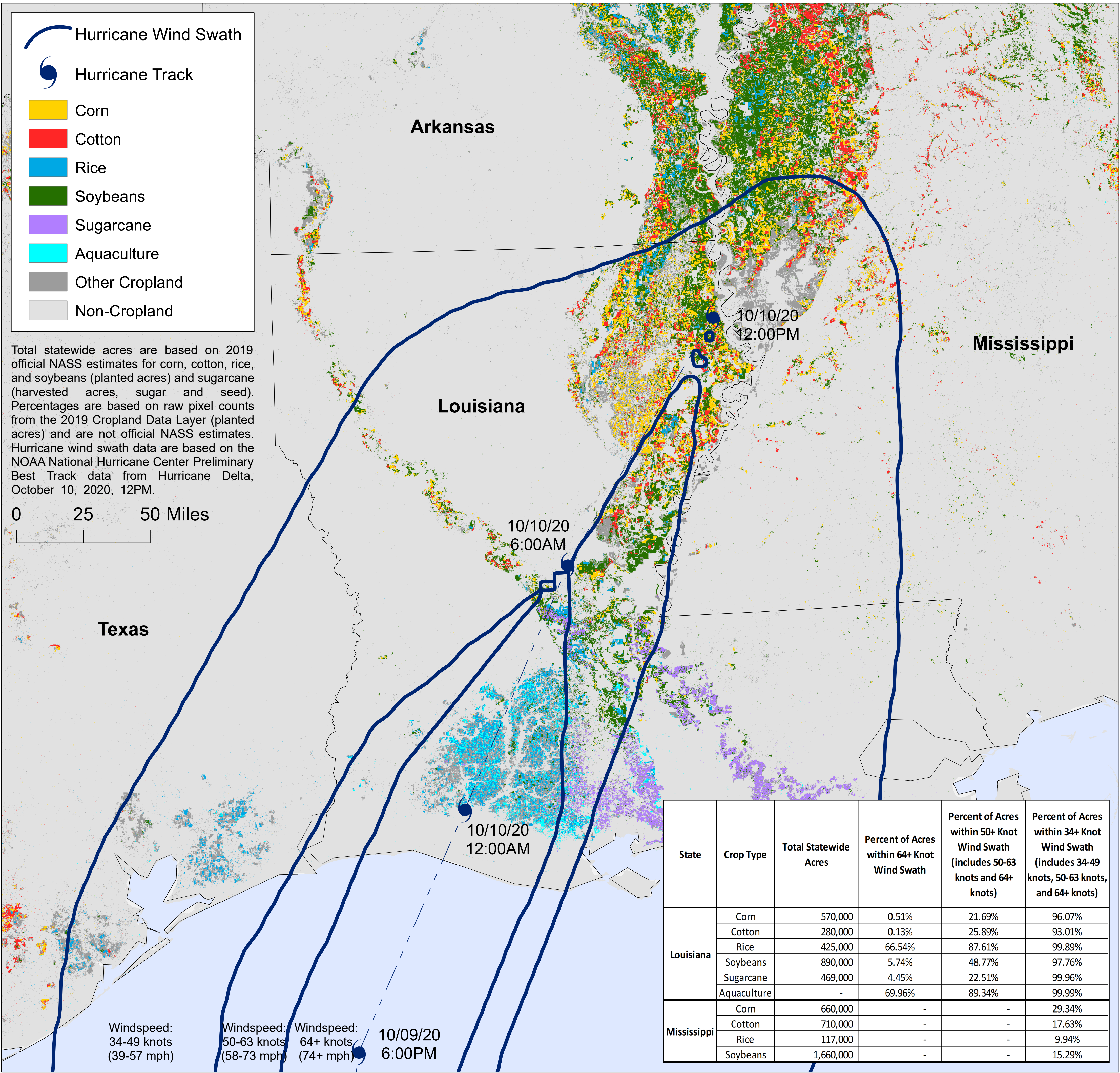


- Hurricane Wind Swath
- Hurricane Track
- Corn
- Cotton
- Rice
- Soybeans
- Sugarcane
- Aquaculture
- Other Cropland
- Non-Cropland

Total statewide acres are based on 2019 official NASS estimates for corn, cotton, rice, and soybeans (planted acres) and sugarcane (harvested acres, sugar and seed). Percentages are based on raw pixel counts from the 2019 Cropland Data Layer (planted acres) and are not official NASS estimates. Hurricane wind swath data are based on the NOAA National Hurricane Center Preliminary Best Track data from Hurricane Delta, October 10, 2020, 12PM.

0 25 50 Miles



Windspeed:
34-49 knots
(39-57 mph)

Windspeed:
50-63 knots
(58-73 mph)

Windspeed:
64+ knots
(74+ mph)

10/09/20
6:00PM

State	Crop Type	Total Statewide Acres	Percent of Acres within 64+ Knot Wind Swath	Percent of Acres within 50+ Knot Wind Swath (includes 50-63 knots and 64+ knots)	Percent of Acres within 34+ Knot Wind Swath (includes 34-49 knots, 50-63 knots, and 64+ knots)
Louisiana	Corn	570,000	0.51%	21.69%	96.07%
	Cotton	280,000	0.13%	25.89%	93.01%
	Rice	425,000	66.54%	87.61%	99.89%
	Soybeans	890,000	5.74%	48.77%	97.76%
	Sugarcane	469,000	4.45%	22.51%	99.96%
	Aquaculture	-	69.96%	89.34%	99.99%
Mississippi	Corn	660,000	-	-	29.34%
	Cotton	710,000	-	-	17.63%
	Rice	117,000	-	-	9.94%
	Soybeans	1,660,000	-	-	15.29%