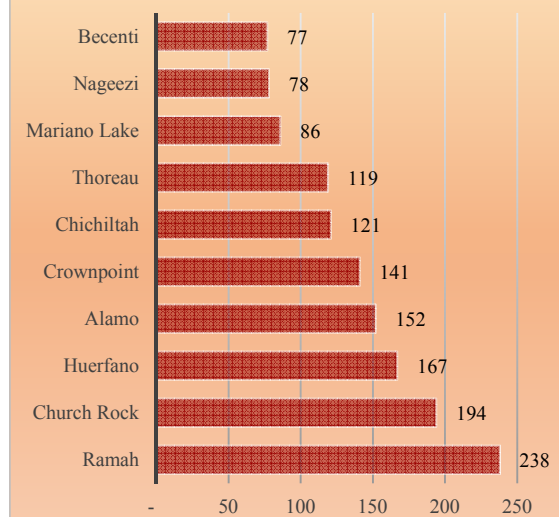


Standing Rock Chapter

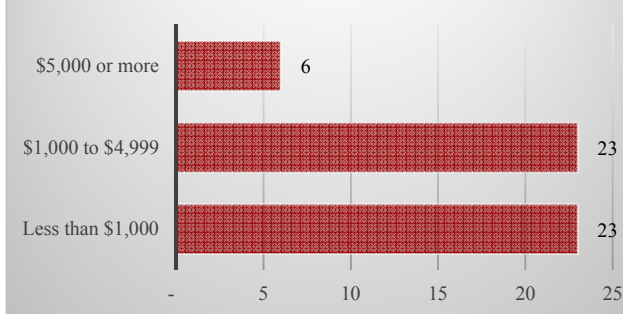
Total and Per Farm Overview

	2017	% of Eastern Agency
Number of Farms and Ranches	52	2.1
Total (\$)		
Market value of products sold	169,900	4.7
Crop sales	-	-
Livestock sales	169,900	5.5
Farm production expenses	580,500	3.9
Per farm average (\$)		
Market value of products sold	3,268	
Share of Sales by Type (%)		
Crop sales	0.0	
Livestock sales	100.0	

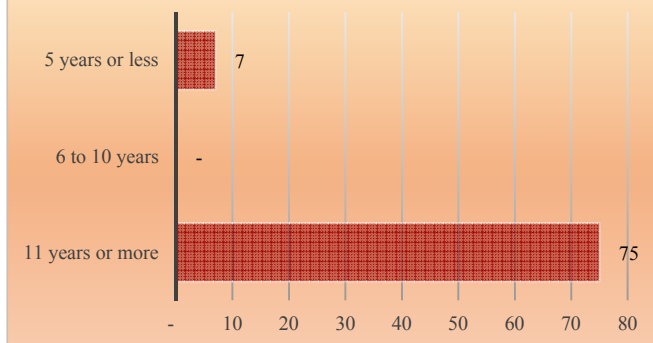
Number of Farms and Ranches, Selected Chapters, Eastern Agency



Farms and Ranches by Value of Sales



Years on Any Farm



Standing Rock Chapter

Livestock and Crop Totals

Livestock	Farms	Inventory	% of
			Eastern Agency
Cattle and calves	39	807	6.1
Beef cows	14	261	3.8
Sheep and lambs	39	848	3.5
Horses and ponies	29	116	2.3
Goats	23	(D)	(D)

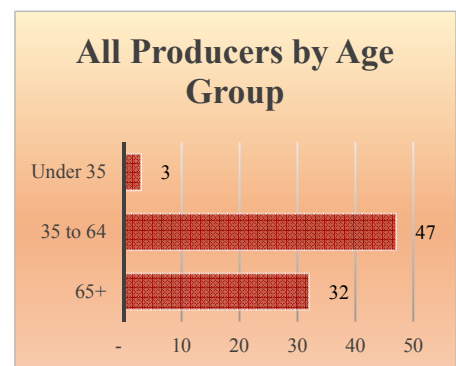


Crops	Farms	Acres	% of
			Eastern Agency
Corn, traditional, acres	-	-	-
Hay and haylage, acres	-	-	-
Vegetables, acres	-	-	-
Cantaloupes, acres	-	-	-
Honeydew melons, acres	-	-	-
Squash, all, acres	-	-	-
Watermelons, acres	-	-	-

Total Producers^a	82
<i>Average age (years)</i>	<i>61.2</i>

Sex	Count
Female	44
Male	38

Other characteristics	Count
With military service	7
New and beginning farmers	7
Young Producers	4



See 2017 Census of Agriculture, U.S. Summary and State Data, for complete footnotes, explanations, definitions, commodity descriptions, and methodology. ^a Data collected for a maximum of four producers per farm. (D) Withheld to avoid disclosing data for individual operations. (NA) Not available. (-) Represents zero.