

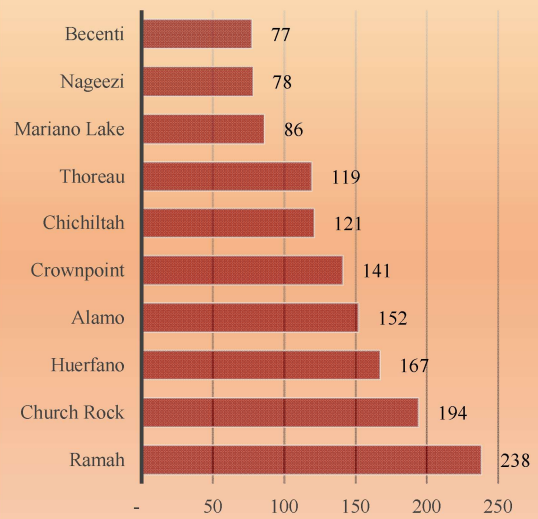


Pueblo Pintado Chapter

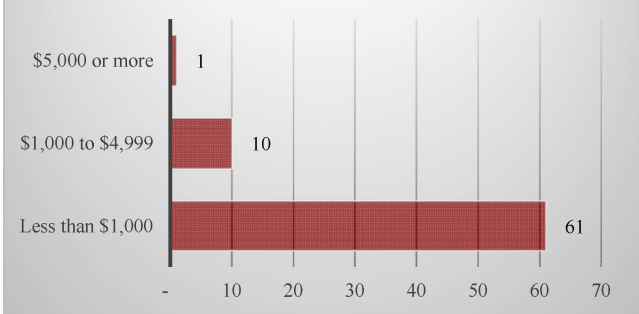
Total and Per Farm Overview

	2017	% of Eastern Agency
Number of Farms and Ranches	72	2.9
Total		
	(\$)	
Market value of products sold	52,900	1.5
Crop sales	-	-
Livestock sales	52,900	1.7
Farm production expenses	321,600	2.1
Per farm average		
	(\$)	
Market value of products sold	734	
Share of Sales by Type		
	(%)	
Crop sales	0.0	
Livestock sales	100.0	

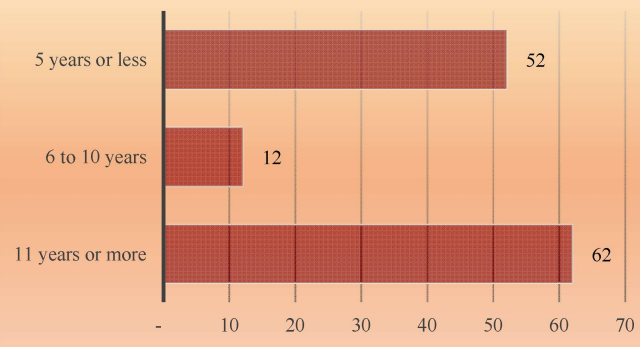
Number of Farms and Ranches, Selected Chapters, Eastern Agency



Farms and Ranches by Value of Sales



Years on Any Farm



Pueblo Pintado Chapter

Livestock and Crop Totals

	Farms	Inventory	% of Eastern Agency
Livestock			
Cattle and calves	19	262	2.0
Beef cows	7	46	0.7
Sheep and lambs	57	1,096	4.5
Horses and ponies	24	98	1.9
Goats	34	410	5.3

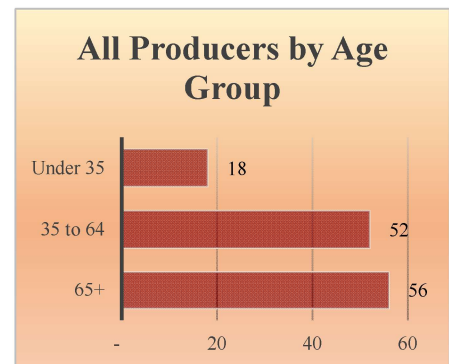


	Farms	Acres	% of Eastern Agency
Crops			
Corn, traditional, acres	-	-	-
Hay and haylage, acres	-	-	-
Vegetables, acres	-	-	-
Cantaloupes, acres	-	-	-
Honeydew melons, acres	-	-	-
Squash, all, acres	-	-	-
Watermelons, acres	-	-	-

Total Producers^a	126
<i>Average age (years)</i>	<i>58.3</i>

Sex	
Female	51
Male	75

Other characteristics	
With military service	3
New and beginning farmers	64
Young Producers	18



See 2017 Census of Agriculture, U.S. Summary and State Data, for complete footnotes, explanations, definitions, commodity descriptions, and methodology. ^a Data collected for a maximum of four producers per farm. (D) Withheld to avoid disclosing data for individual operations. (NA) Not available. (-) Represents zero.