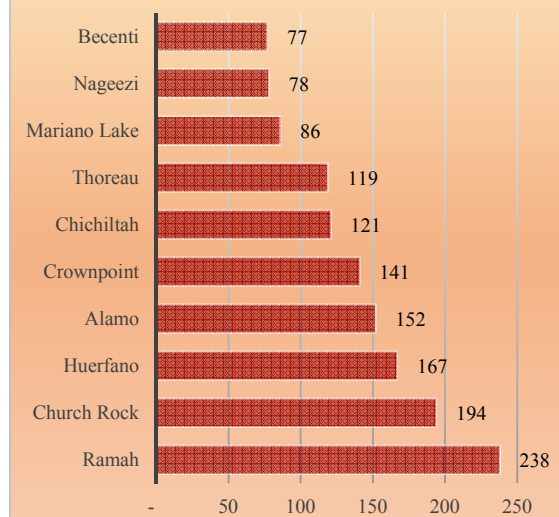


## Iyanbito Chapter

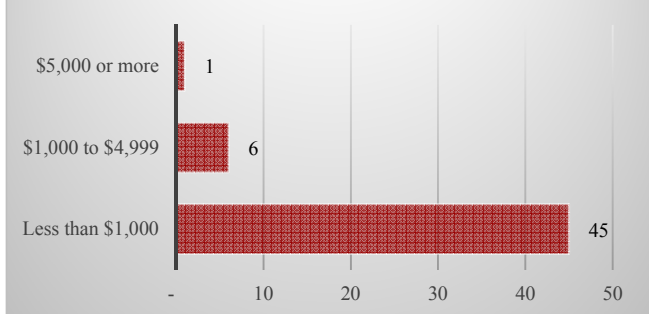
### Total and Per Farm Overview

	2017	% of Eastern Agency
Number of Farms and Ranches	52	2.1
<b>Total</b>		
Market value of products sold	(\$) 22,700	0.6
Crop sales	-	-
Livestock sales	22,700	0.7
Farm production expenses	312,500	2.1
<b>Per farm average</b>		
Market value of products sold	(\$) 436	
<b>Share of Sales by Type</b>		
Crop sales	(%) 0.0	
Livestock sales	100.0	

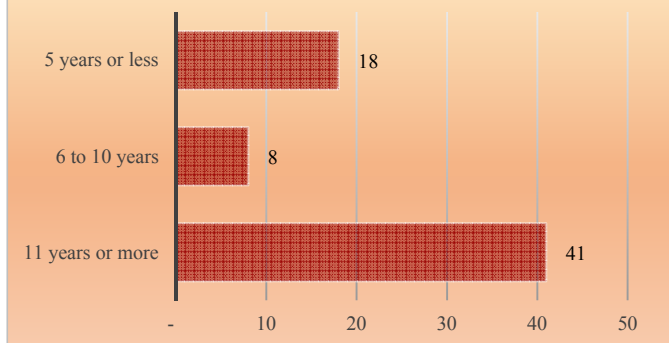
Number of Farms and Ranches, Selected Chapters, Eastern Agency



Farms and Ranches by Value of Sales



Years on Any Farm



## Iyanbito Chapter

### Livestock and Crop Totals

	Farms	Inventory	% of Eastern Agency
<b>Livestock</b>			
Cattle and calves	9	58	0.4
Beef cows	9	46	0.7
Sheep and lambs	41	639	2.6
Horses and ponies	35	139	2.7
Goats	6	34	0.4

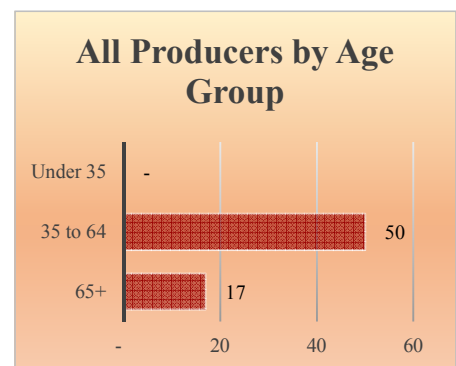


	Farms	Acres	% of Eastern Agency
<b>Crops</b>			
Corn, traditional, acres	-	-	-
Hay and haylage, acres	-	-	-
Vegetables, acres	-	-	-
Cantaloupes, acres	-	-	-
Honeydew melons, acres	-	-	-
Squash, all, acres	-	-	-
Watermelons, acres	-	-	-

**Total Producers<sup>a</sup>** 67  
*Average age (years)* 58.2

**Sex**  
 Female 36  
 Male 31

**Other characteristics**  
 With military service 8  
 New and beginning farmers 26  
 Young Producers -



See 2017 Census of Agriculture, U.S. Summary and State Data, for complete footnotes, explanations, definitions, commodity descriptions, and methodology. <sup>a</sup> Data collected for a maximum of four producers per farm. (D) Withheld to avoid disclosing data for individual operations. (NA) Not available. (-) Represents zero.