

National Agricultural Statistics Service

2026 Guide to **PRODUCTS** and **SERVICES**



United States Department of Agriculture
National Agricultural Statistics Service

~ Providing Timely, Accurate, and Useful
Statistics in Service to U.S. Agriculture ~





A Mission That Begins and Ends with You!



NASS's Agricultural Statistics Board (ASB) prepares and disseminates hundreds of reports every year, providing the official USDA estimates on crops, livestock, and economic indicators for the agricultural industry.

Agricultural Statistics Board Chair

Lance Honig
(202) 577-6558

Agricultural Statistics Board Secretary

Vincent Davis
(202) 720-3384

In addition to NASS, other USDA Agencies issue a variety of economic reports that may be of interest to NASS customers. More information about the reports at these agencies can be obtained from the following telephone numbers or internet addresses:

Economic Research Service	www.ers.usda.gov (202) 694-5050
Agricultural Marketing Service	www.ams.usda.gov (202) 720-8998
Foreign Agricultural Service	www.fas.usda.gov (202) 720-7105
World Agricultural Outlook Board	www.usda.gov/oce (202) 720-5447

Contents 2026

A Mission That Begins and Ends with You!.....6

Agricultural Statistics Briefing Livestream Schedule .7

Data and Release Reference Guide.....8

Agricultural Chemicals and Pest Management

Field Crops9

Fruits.....9

Postharvest Applications9

Sheep and Sheep Facilities9

Vegetables9

Survey Methodology and Quality Measures25

Aquaculture

Catfish Production9

Trout Production.....9

Survey Methodology and Quality Measures25

Census of Agriculture

2022 Census of Agriculture9

Volume 1, Geographic Area Series10

Appendix A. Methodology10

2022 Census of Puerto Rico10

Outlying Areas.....10

Volume 2, Subject Series.....10

History10

American Indian Reservations.....10

Watershed Tabulations10

Typology.....10

Specialty Crop Tabulations10

Specialty Crops for Outlying Areas.....10

Volume 3, Special Studies.....10

2023 Census of Aquaculture.....10

2023 Irrigation and Water Management Survey.....10

2024 Census of Horticultural Specialties10

2025 Local Foods Marketing Practices Survey11

Rankings and Profiles.....11

State and County Profiles11

Congressional District Rankings11

Online Resources.....11

Agricultural Atlas11

Agriculture Census Web Maps.....11

Highlights11

Zip Code Tabulations11

Custom Census Products11

Navajo Nation Profiles11

Special Organics Tabulation.....11

Census Related.....11

2019 Survey of Irrigation Organizations.....11

2019 National Farmers Market Managers Survey 11

Organic Certifiers 2015/2016 Summary11

2025 Organic Survey11

2024 TOTAL11

Dairy

Agricultural Prices.....12

Capacity of Refrigerated Warehouses 2025 Summary.. 12

Cattle12

Cold Storage12

Cold Storage 2025 Annual Summary12

Dairy Products.....12

Livestock Slaughter.....12

Milk Production.....12

2025 Milk Production, Disposition, and Income.....12

Survey Methodology and Quality Measures25

Economics

Agricultural Prices.....12

Cash Rents by State13

Cash Rents by County13

Farm Production Expenditures 2025 Annual Summary. 13

Farms and Land in Farms 2025 Annual Summary.....13

Land Values 2025 Annual Summary.....13

Survey Methodology and Quality Measures25

Field Crops

Agricultural Prices.....14

Acreage.....14

Cotton Ginnings14

Cotton Ginnings 2025 Annual Summary14

Crop Production14

Crop Production 2025 Annual Summary15

Crop Production Historical Track Records.....15

Crop Progress15

Crop Values 2025 Annual Summary.....15

Current Agricultural Industrial Reports (CAIR).....15

Flour Milling15

Flour Milling 2025 Annual Summary15

2025 North American Flour Milling16

Cotton System Consumption and Stock16

Cotton System Consumption and Stock 2025

Annual Summary.....16

Fats and Oils: Oilseed Crashings, Production,

Consumption, and Stocks16

Fats and Oils: Oilseed Crashings, Production,

Consumption, and Stocks 2025 Annual Summary16

2025 North American Grain and Oilseed Crushing.....16

Grain Crashings and Co-Products Production.....16

2025 Annual Summary.....16

Grain Stocks	16	U.S. & Canadian Cattle and Sheep.....	24
National Hemp Report.....	16	U.S. & Canadian Cattle	24
Hop Stocks	16	U.S. and Canadian Hogs.....	24
National Hop Report.....	16	Survey Methodology and Quality Measures	25
North American Potatoes.....	16		
Peanut Prices	21	Poultry	
Peanut Stocks and Processing.....	21	Agricultural Prices.....	24
Potatoes 2025 Annual Summary	21	Broiler Hatchery	24
Potato Stocks	21	Chickens and Eggs	24
Price Reaction After USDA Crop Reports	21	Chickens and Eggs 2025 Summary	24
Prospective Plantings.....	21	Cold Storage Monthly	24
Rice Stocks	21	Cold Storage 2025 Summary.....	25
Small Grains 2026 Summary.....	21	Eggs Products	25
Winter Wheat and Canola Seedings	21	Hatchery Production 2025 Summary.....	25
World Agricultural Supply & Demand Estimates	21	Livestock Historical Track Records	25
Survey Methodology and Quality Measures	25	Poultry Production and Value 2025 Summary.....	25
		Poultry Slaughter	25
Fruits, Nuts and Vegetables		Poultry Slaughter 2025 Summary	25
Agricultural Prices.....	21	Turkey Hatchery.....	25
Citrus Fruits 2026 Summary.....	21	Turkeys Raised.....	25
Coffee	21	Overview of the U.S. Turkey Industry	25
Cold Storage	22	Survey Methodology and Quality Measures	25
Cold Storage 2025 Summary.....	22		
Crop Production.....	22	Agricultural Statistics Board Calendar	17
Crop Values 2025 Summary.....	22	Index of Estimates.....	26
Mushrooms	22	Contact Us.....	33
Noncitrus Fruits and Nuts 2025 Summary	22	NASS Data Online.....	34
Vegetables 2025 Summary	22		
Vegetables Usual Planting and Harvesting Dates.....	22		
Survey Methodology and Quality Measures	25		
Horticulture and Floriculture			
Floriculture Crops 2024 Annual Summary	22		
Floriculture Crops 2025 Annual Summary	22		
2024 Census of Horticultural Specialties	22		
Livestock			
Cattle	22		
Cattle on Feed.....	22		
Cost of Pollination.....	23		
Dairy Products	23		
Dairy Products 2025 Summary.....	23		
Hogs and Pigs.....	23		
Honey	23		
Honeybee Colonies.....	23		
Livestock Historical Track Records	23		
Livestock Slaughter.....	23		
Livestock Slaughter 2025 Summary	23		
Meat Production, Disposition, and Income,			
2025 Annual Summary	23		
Price Reactions After USDA Livestock Reports.....	24		
Sheep and Goats	24		
Overview of the U.S. Cattle Industry	24		
Overview of the U.S. Hog Industry	24		

A Mission That Begins and Ends with You!

Useful Data to Help You in Your Work

With NASS data, you have accurate, free, unbiased, and reliable facts and figures to make well-informed decisions that eliminate guesswork, reduce risk, and improve profitability.

For example, you can incorporate NASS data into your decision-making by consulting survey or Census of Agriculture data to:

- Determine crop and livestock productivity and yields in your area
- Track trends
- Set prices
- Improve operational efficiencies
- Negotiate cash rents
- Identify and track trends, best practices, and patterns that will enable you to be more competitive
- Analyze consumer demand for your ag-based products – be it foods that nourish a nation or wool that keeps us warm

NASS Data Affect Every Aspect of Your Business

Many of the products and services you rely on daily to meet your needs and goals are offered by businesses that use NASS data to guide their inventory and prices.

For example, agribusinesses use NASS data to:

- Determine product inventory to meet demand
- Develop new equipment and tools, or improve existing models
- Develop software and apps to advance farm management capabilities
- Calculate risk levels for lending programs
- Design studies for agricultural experiments to increase crop productivity and yields
- Improve their ability to serve you

NASS Data Support Research, Education, and Advocacy

Governments and organizations at all levels use NASS data to develop agricultural education and research priorities and to advocate for farming and ranching among non-agricultural neighbors and groups.

That means, your local, state, and national leaders use NASS data to address agriculture – and infrastructure-related issues such as broadband, roads, and zoning.

For example, they use NASS data to:

- Answer challenging questions on such topics as crop management, chemical pesticides, land use, and veterinary science
- Detect trends in invasive pests or plant species, or in viruses and illnesses affecting livestock
- Design studies for agricultural experiments to increase crop productivity and yields
- Evaluate the impact of climate and the environment on agriculture
- Understand the vital economic role of various ag industry sectors
- Promote the ag industry locally, regionally, and nationally
- Educate students about agriculture
- Pinpoint best practices for producers and promote their adoption



Your Responses Impact University-Based Research

As one example, Oklahoma State University's (OSU) Division of Agricultural Sciences and Natural Resources conducts research using NASS data and parlays findings into practical extension programs that help Oklahomans solve issues of importance to them, their families, and their communities. Having access to NASS data enables OSU to maximize its research efforts – critical to a public land-grant institution. So vital are NASS data to OSU's ability to achieve its mission and serve Oklahomans, the University teamed up with USDA to strongly promote NASS surveys and encourage producers to respond.

Complete Your Survey Online!

It's faster and easier than ever before.

- ✓ Calculates totals automatically
- ✓ Saves along the way and prints



2026 BRIEFINGS

NASS AGRICULTURAL STATISTICS BOARD

Join Us Live on  YouTube

www.youtube.com/usdanass

January 12	Crop Production and Grain Stocks 12:05 p.m. EST
January 30	Cattle 3:05 p.m. EST
February 10	Crop Production 12:05 p.m. EST
March 10	Crop Production 12:05 p.m. EST
March 26	Hogs and Pigs 3:05 p.m. EDT
March 31	Prospective Plantings and Grain Stocks 12:05 p.m. EDT
April 9	Crop Production 12:05 p.m. EDT
May 12	Crop Production 12:05 p.m. EDT
June 11	Crop Production 12:05 p.m. EDT
June 25	Hogs and Pigs 3:05 p.m. EDT
June 30	Acreage and Grain Stocks 12:05 p.m. EDT
July 10	Crop Production 12:05 p.m. EDT
July 24	Cattle 3:05 p.m. EST
August 12	Crop Production 12:05 p.m. EDT
September 11	Crop Production 12:05 p.m. EDT
September 24	Hogs and Pigs 3:05 p.m. EDT
September 30	Small Grain Summary and Grain Stocks 12:05 p.m. EDT
October 9	Crop Production 12:05 p.m. EDT
November 10	Crop Production 12:05 p.m. EDT
December 9	Crop Production 12:05 p.m. EDT
December 23	Hogs and Pigs 3:05 p.m. EDT

Welcome to the NASS

2026 Data and Release Reference Guide

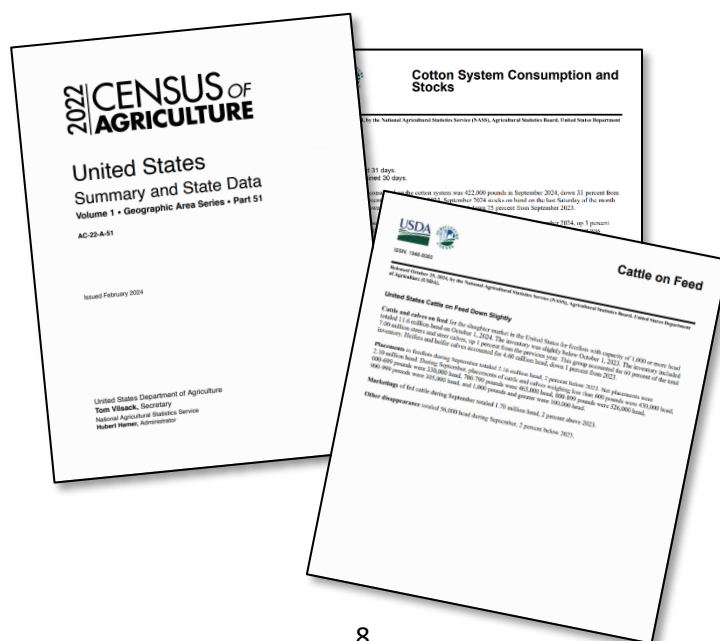
The USDA's National Agricultural Statistics Service (NASS) conducts hundreds of surveys every year and prepares reports covering virtually every aspect of U.S. agriculture. Production and supplies of food and fiber, prices paid and received by farmers, farm labor and wages, farm finances, chemical use, and changes in the demographics of U.S. producers are only a few examples.

Access to NASS Reports

For your convenience, you may access NASS reports and products the following ways:

- All reports are available electronically, at no cost, on the NASS web site: www.nass.usda.gov.
- Both national and state specific reports are available via a free e-mail subscription. To set-up this free subscription, visit www.nass.usda.gov and click on “National” or “State” in upper right corner above “search” box to create an account and select the reports you would like to receive.
- Economics, Statistics, and Market Information System – National Agricultural Library (NAL) website houses NASS’s and other agency’s archived reports at <https://esmis.nal.usda.gov>. All email subscriptions containing reports will be sent from <https://esmis.nal.usda.gov>. To receive the reports via e-mail, you will have to go to the website, create a new account and subscribe to the reports. You should whitelist notifications@esmis.nal.usda.gov in your email client to avoid the emails going into spam/junk folders.

For more information on NASS surveys and reports, call the NASS Agricultural Statistics Hotline at (800) 727-9540, 7:30 a.m. to 4:00 p.m. ET, or e-mail: nass@usda.gov.



Agricultural Chemicals and Pest Management

2025 Agricultural Chemical Usage Field Crops Summary

May 8. Chemical application rates and acres treated for selected 2025 field crops in major producing States and pest management practices used.

2025 Agricultural Chemical Usage Fruit Summary

July 15. Chemical application rates and acres treated for selected 2025 fruit crops in major producing States and pest management practices used on program acres.

2009-2010 Agricultural Chemical Usage Postharvest Summary, Wheat

Pesticide application rates and quantity of postharvest wheat treated plus data on application methods and timing of applications for major producing States. Includes data on pest management practices used on target operations.

2010 Agricultural Chemical Usage Sheep and Sheep Facilities.

Summary of information on chemical applications to sheep and associated sheep structures/facilities.

2024 Agricultural Chemical Use Vegetables Summary

Chemical application rates and acres treated for selected 22 vegetables crops in major producing States and pest management practices used on program acres.

Note: Agricultural Chemical Usage results are released through the QuickStats database only. Pre-defined queries can be found at www.nass.usda.gov/Surveys/Guide_to_NASS_Surveys/Chemical_Use/index.php.

Aquaculture

Catfish Production (two issues)

February 9, July 15.

February 9. February's issue contains water area and grower inventory, sales numbers by size groups for major production States and United States.

July 15. July's issue contains water area and grower inventory.

Trout Production

February 27. Grower sales, distributed trout and fish losses for major production States and United States.

Survey Methodology and Quality Measures. Refer to page 25, NASS Survey Methodology and Quality Measures, for information. Additional reference: Methodology and Quality Measures.

Census of Agriculture

2022 Census of Agriculture

The Census is conducted every 5 years to obtain agricultural statistics for each county, state, and the Nation.

The Census is the leading source of statistics about the Nation's agricultural production and the only source of consistent, comparable data at the county, State, and national levels. The Census is authorized by law under Title 7, U.S. code and is conducted in close cooperation with the Nation's agricultural user groups and farmer organizations.

The Census includes all places from which \$1,000 or more of agricultural products, including government payments, were produced and sold, or normally would have been sold, during the census year.

Special Studies are conducted as follow-on programs to the Census of Agriculture. The follow-on programs include the Census of Aquaculture, Irrigation and Water Management Survey, Census of Horticultural Specialties, the Organic Production Survey, and the Local Food Marketing Practices Survey.

Census of Agriculture *continued*

Volume 1, Geographic Area Series

United States, State and County Data

Separate State reports display statistics for the entire State and every county or equivalent. The United States Summary provides national data and selected data for each State. Data include number of farms; farm characteristics; livestock, poultry, and their products; crops; land use; irrigation; producer characteristics; ownership; income; production expenses; direct marketing; farm labor and migrant workers; agricultural activity on American Indian reservations; chemical use; computer use and more. Reports cover 2022, with comparative data for previous census years.

Appendix A. Census of Agriculture Methodology

Provides the methods used for the Census population, data collection, data processing, and disclosure review. Reliability tables are included.

2022 Census of Puerto Rico

Census 2022 Outlying Areas.

American Samoa

Guam

Northern Mariana Islands

U.S. Virgin Islands.

Volume 2, Subject Series

History

Provides a detailed report describing the planning and execution of the Census of Agriculture.

American Indian Reservations

Provides data that supplement the 2022 Census of Agriculture Volume 1. This publication presents selected operation and operator data for 73 American Indian Reservations. Data includes number of farms, land in farms market value of products, production practice and characteristics of the operation and producers.

Watershed Tabulations

Presents agricultural statistics by 6-digit Hydrological Unit Code for the contiguous 48 states, Alaska and Hawaii. The data tables show the number of farms, land in farms, cropland harvested, irrigated acres, acres treated with fertilizer, acres treated with chemicals, selected crop acreage, organic acreage and inventory of selected livestock.

Typology

The 2022 Census of Agriculture Farm Typology report provides data that supplement the 2022 census. Selected census statistics by typology categories that group farms with similar characteristics are provided. It primarily focuses on the “family farm,” or any farm where the majority of the business is owned by the producer and individuals related to the producer, including relatives who do not live in the producer’s household.

Specialty Crop Tabulations

Presents agricultural statistics for specialty crops for all farms in the 50 states. Tables show production, demographic and economic data for farms producing specialty crops. Specialty crops are defined as fruits and vegetables, tree nuts, dried fruits, nursery crops (including floriculture) and maple syrup. Some USDA agencies do not consider maple syrup a specialty crop, so data are provided that include and exclude maple syrup to accommodate either definition.

Specialty Crops for Outlying Areas

Provides data on number of farms, acres harvested, and value of sales for specialty crops in Puerto Rico, American Samoa, Guam, Northern Mariana Islands, and U.S. Virgin Islands.

Volume 3, Special Studies

2023 Census of Aquaculture

Provides statistics about the U.S. aquaculture industry at National and State levels. Data collected include production methods, water area and sources, production, sales, sales outlet and aquaculture for restoration, conservation, enhancements, and recreation.

2023 Irrigation and Water Management Survey

Displays results from a sample survey of farm and ranch operators who reported using irrigation in the 2022 Census. Includes acres irrigated; yields of specified crops; method of distribution; quantity and source of water used; number and depth of wells; pumps used in moving water; energy use; and expenditures for maintenance and investments for each State, 20 water resources regions and the United States.

2024 Census of Horticultural Specialties

February 26, 2026. Provides data at national and state levels on number and kinds of horticultural specialty operations, value of sales, and types of products.

Census of Agriculture *continued*

2025 Local Food Marketing Practices Survey

Provides comprehensive statistics on local agricultural economies.

Rankings and Profiles

State and County Profiles

Based on results of the Census of Agriculture, describes changes in several key agricultural statistics. Also provides the rank of each county in the State and the Nation in crop acreage, livestock inventories and sales. Graphics included.

Congressional District Rankings

Presents agricultural statistics by Congressional district (118th Congress) for all farms in all 50 States. Tables show the total market value of products sold and the number of farms by size for land in farms, cropland harvested, selected crops and inventory of cattle, calves, hogs, and pigs. Crops vary by State and tables show number of farms by acres harvested for commodities such as tobacco, cotton, soybeans for beans, peanuts for nuts and land in orchards.

Online Resources

Agricultural Atlas

Features thematic maps highlighting agricultural activities and characteristics such as the number of farms, selected crops harvested, selected livestock inventories and poultry (broilers) number sold. Covers the United States, States and not published counties. All maps are available at

www.nass.usda.gov/AgCensus.

Agricultural Census Web Maps

An online application utilized to access key Census data through a collection of interactive maps.

Highlights

Key findings from the Census of Agriculture and from one or more surveys.

Zip Code Tabulations

2022 Census of Agriculture counts of farm characteristics by five-digit postal ZIP Code.

Custom Census Products

Navajo Nation Profiles

Selected 2022 Census of Agriculture statistics of producer and farm characteristics by Navajo Nation agency and chapter.

https://www.nass.usda.gov/Publications/AgCensus/2017/Online_Resources/Navajo_Nation_Profiles/index.php

Special Organics Tabulation

Selected census statistics of operator and farm characteristics by all farms and farms with organic sales are provided.

Census Related

2019 Survey of Irrigation Organizations

Provides data about local irrigation decisions and their impact on drought resilience.

2019 National Farmers Market Managers Survey

Measures the customer demand of local foods from the Farmer's Market manager's perspective.

Organic Certifiers 2015/2016 Summary

Provides statistics on certified acreage and livestock commodities at the national and state level.

Tenure, Ownership and Transition of Agricultural Land (TOTAL)

March 12, 2026. Provides a comprehensive picture of farm land ownership and farm economics, including operating expenses, demographic information on land owners, capital expenses, farm debt and assets, labor needs, and household characteristics.

Dairy

Agricultural Prices (12 monthly issues)

All issues present prices received by farmers for principal crops, livestock, and livestock products; indexes of prices received by farmers; parity prices; prices paid for input items and feeder livestock; indexes of prices paid by farmers and livestock/poultry feed price ratios. The NASS Quick Stats database is updated monthly with historical index revisions at www.nass.usda.gov. A description of parity prices including authority for, method of computation and prices used in parity computations. (Refer to *Economic Agricultural Prices* for additional information.)

Capacity of Refrigerated Warehouses 2025 Annual Summary

February 9, 2026. Number of warehouses and capacity by State and U.S. number of general warehouses public and private.

Cattle

Refer to *Livestock* section for information.

Cold Storage (12 monthly issues, an annual summary, and Biennial Capacity of Refrigerated Warehouses (published in even years)).

January 23, February 24, March 24, April 24, May 22, June 25, July 24, August 24, September 25, October 23, November 24, December 23. End-of-month stocks of meats, dairy products, poultry products, fruits, nuts and vegetables in public, private and semi-private refrigerated warehouses.

Cold Storage 2025 Annual Summary

February 27. Regional and national totals for end-of-month holdings of meat, dairy products, poultry products, fruits, nuts and vegetables in public, private and semi-private refrigerated warehouses for 2025.

Dairy Products

Refer to *Livestock* section for information.

Livestock Slaughter

Refer to *Livestock* section for information.

Milk Production (12 monthly issues and an annual summary)

January 23, February 20, March 20, April 22, May 22, June 22, July 22 August 21, September 22, October 22, November 20, December 22. Number of milk cows, production per cow and total milk production during preceding month for major States and U.S. in all issues.

January 23, April 22, July 22, October 22: Number of milk cows and production quarterly by State and U.S.

(Milk Production continued)

February 20. Number of milk cows, production per cow and milk production revised by months, 2024 and 2025 by State and U.S. Licensed dairy herds by State and U.S.

Milk Production, Disposition, and Income 2025 Summary

April 30. Annual number of milk cows, production per cow and production for the year by State and U.S. 2024-25. Amount of milk used on farms and amount sold, cash receipts and value of production by State and U.S.

2025 Organic Survey

Refer to *Census of Agriculture* section for information.

Survey Methodology and Quality Measures. Refer to page 25, NASS Survey Methodology and Quality Measures, for information. Additional reference: Methodology and Quality Measures.

Economics

Agricultural Prices (12 monthly issues)

January 30, February 27, March 30, April 30, May 29, June 29, July 31, August 31, September 29, October 30, November 30, December 30. All issues present prices received by farmers for principal crops, livestock, and livestock products; indexes of prices received by farmers; parity prices; indexes of prices paid by farmers and livestock/poultry feed price ratios. The NASS Quick Stats database is updated monthly with historical index revisions at www.quickstats.nass.usda.gov. A description of parity prices including authority for, method of computation and prices used in parity computations.

January 30. Revised monthly prices and marketing year average prices for rice. Grazing fee rates on privately owned non-irrigated land for 17 western states. Revised historical series of prices received and prices paid indexes. Annual average prices paid for feeder livestock.

February 27. Revised monthly and annual average prices for meat animals. Annual average prices received for wool and mohair are published in the January Sheep and Goat publication. Adjusted base prices used in computing parity prices, including commodities not included in the monthly report. Inventory values for livestock are published in the February Ag Prices report.

March 30. No special features.

Economics *continued*

April 30. Revised monthly and annual prices for milk, poultry, eggs, and milkfat test percentages. Annual index bench-mark revisions for price paid indexes.

May 29. Historical monthly and marketing year average feed price ratios and market year average prices for tobacco.

June 29. Revised U.S. monthly prices, marketing year average prices and marketing percents for barley, oats, and wheat.

July 31. Marketing year average prices for sugarbeets and sugarcane. Revised state monthly prices, marketing year average prices and marketing percents for canola, dry edible peas, flaxseed, and lentils. Marketing year average prices for rapeseed. Adjusted base prices used in computing parity prices, including commodities not included in the monthly report.

August 31. Revised state monthly prices, marketing year average prices and marketing percents for wheat, oats, barley, hay, peanuts, and rye.

September 29. Marketing year average prices for mustard seed and safflower. Revised monthly prices, marketing year average prices and marketing percents for sorghum, soybeans and sunflowers. Revised U.S. monthly prices, marketing year average prices and marketing percents for corn, chickpeas, dry edible beans, pima cotton, and upland cotton. Monthly price revisions for fresh apples, peaches, grapes, and pears.

October 30. Year-to-date U.S. monthly prices, marketing year average prices and marketing percents for rice.

November 30. Revised state monthly prices, marketing year average prices and marketing percents for corn. Marketing year average prices for proso millet.

December 30. Marketing year average prices for citrus. Prices paid index for beef cattle production.

Cash Rents by State

July 31. Irrigated cropland, non-irrigated cropland, and pastureland cash rents per acre for States and U.S. Estimates are for the 2025 calendar year. Results available at quickstats.nass.usda.gov.

Cash Rents by County

August 21. Irrigated cropland, non-irrigated cropland and pastureland cash rents per acre for counties for the 2025 calendar year. Results available at quickstats.nass.usda.gov/.

Farm Production Expenditures 2025 Summary

July 24. Estimates of farm production expenditures by U.S. farm production region, farm type and economic class for 2025, with revisions for 2024.

Farms and Land in Farms 2025 Summary

February 13. Number of farms in operation, land in farms and average farm size by acres during 2026 and revisions for 2025; State and U.S. data. Selected State sales class estimates for number of farms and land in farms.

Land Values 2026 Summary

July 31. State, regions, and U.S. agricultural land values for 2026 including 2025 revisions. Estimates are on a per acre basis and include value of all land and buildings, cropland and pasture.

Survey Methodology and Quality Measures. Refer to page 25, NASS Survey Methodology and Quality Measures, for information. Additional reference: Methodology and Quality Measures.

Field Crops

Agricultural Prices (12 monthly issues)

All issues present prices received by farmers for principal crops, livestock, and livestock products; indexes of prices received by farmers; parity prices; prices paid for input items and feeder livestock; indexes of prices paid by farmers and livestock/poultry feed price ratios. The NASS Quick Stats database is updated monthly with historical index revisions at www.nass.usda.gov. A description of parity prices including authority for, method of computation and prices used in parity computations. (Refer to *Economic Agricultural Prices* section for additional information.)

Acreage

June 30. Planted and harvested area by State for corn, potatoes, soybeans, all wheat, winter wheat, other spring wheat, Durum wheat, oats, barley, rye, sorghum, rice by length of grain, peanuts, oil and non-oil sunflower, flaxseed, canola, rapeseed, safflower, mustard seed, dry beans, sugarbeets, dry peas, chickpeas, and lentils. Planted area only for cotton and proso millet. Harvested area only for all hay, alfalfa hay, other hay, tobacco (by class and type) and sugarcane. Percent of area planted to biotechnology varieties in the U.S. and selected States for corn, soybeans, and Upland cotton. Percent of soybean acreage double cropped by State.

Cotton Ginnings (13 reports)

January 12, January 23, February 10, March 10, August 12, September 11, September 22, October 9, October 22, November 10, November 23, December 10, December 22.

Issued approximately twice per month during August through March ginning season, plus annual summary.

Running bales ginned to date for all cotton and American-Pima cotton by State. County ginnings, relating to first-of-month, are released with mid-month State ginnings.

Cotton Ginnings 2025 Annual Summary

May 12. Running bales ginned, 480-pound bales ginned, average bale weight and number of active cotton gins by State and county for the ginning period.

Crop Production (12 monthly issues, an annual summary, and four supplements)

January 12, February 10, March 10, April 9, May 12, June 11, July 10, August 12, September 11, October 9, November 10, December 10.

January 12. Hay stocks on farms December 1, 2025; indicated production of 2025-26 citrus fruits.

February 10. Area harvested, yield and production of sugarcane for 2025.

March 10. Area harvested, yield and production of sugarcane for 2025.

April 9. Indicated production of 2025-26 citrus fruits and revised production of 2024-25 citrus fruits.

May 12. Winter wheat indicated area harvested yield, production, and U.S. production by class as of May 1. Indicated area harvested, yield and production for Durum wheat (Arizona and California); Hay stocks on farms May 1. Revised 2025 acreage, yield, production, and bales ginned of cotton. Revised 2025 and final revisions for 2024 production and disposition of cottonseed. Indicated production of peaches and almonds (California).

June 11. Winter wheat indicated area harvested, yield, production, and U.S. production by class as of June 1; Durum wheat indicated area harvested, yield and production for Arizona and California; 2026 maple syrup production, 2025 maple syrup price and value. Revised 2025 maple syrup production. Objective survey data for winter wheat percent of samples processed in the lab. Indicated production of cherry (tart and sweet). Hops area strung for harvest by variety.

July 10. Indicated area harvested, yield and production as of July 1 for winter wheat, Durum wheat, other spring wheat, oats, barley, and flue-cured tobacco. Indicated production of wheat by class, apricots, and 2025-26 citrus fruits. Objective survey data for winter wheat number of heads per square foot and percent of samples processed in the lab.

August 12. Planted acreage - all crops, if changed; indicated area harvested, yield and production as of August 1 for corn for grain, winter wheat, Durum wheat, other spring wheat, oats, barley, cotton, rice, hay, sorghum for grain, dry edible beans, soybeans for beans, peanuts for nuts, tobacco (by class and type), sugarbeets, sugarcane for sugar and seed, and hops; indicated cottonseed production. Indicated U.S. production of wheat and rice by class, apples, peaches, pears, grapes, and cranberries. Objective survey data for winter wheat number of heads per square foot and percent of samples processed in the lab. Planted acres by commercial class for dry edible beans.

Field Crops *continued*

(Crop Production continued)

September 11. Updated planted acreage - chickpeas, corn, cotton, dry edible peas, lentils, peanuts, rice, sorghum, soybeans, and sugarbeets, if changed; indicated area harvested, yield and production as of September 1 for corn for grain, cotton, rice, sorghum for grain, soybeans for beans, peanuts for nuts, tobacco (by class and type), sugarbeets, sugarcane for sugar and seed; indicated cottonseed production. Indicated area planted, harvested, yield and production for chickpeas, dry edible peas and lentils. Indicated U.S. production of rice by class, and walnuts. Indicated production of 2026-27 California Navel oranges. Objective survey data for selected States; corn plant populations and number of ears per acre and soybeans number of pods with beans per 18 square feet.

October 9. Updated, planted acreage - canola, dry edible beans, and sunflower, if changed; indicated area harvested, yield and production as of October 1 for corn for grain, cotton, rice, sorghum for grain, hay, dry edible beans, soybeans for beans, peanuts for nuts, sunflower, canola, tobacco (by class and type), sugarbeets, sugarcane for sugar and seed; indicated cottonseed and pecan production. Indicated U.S. production of rice by class and 2026-27 citrus fruits. Revised canola, peanut and sunflower acreage, yield and production for 2025. Objective survey data for selected States; corn plant populations, number of ears per acre and percent of samples processed in the lab and soybean number of pods with beans per 18 square feet and percent of samples processed in the lab.

November 10. Indicated area harvested, yield and production as of November 1 for corn for grain, cotton, rice, sorghum for grain, soybeans for beans, peanuts for nuts, sugarbeets and sugarcane for sugar and seed; indicated cottonseed production. Planted acres, indicated area harvested, yield and production of potatoes. Indicated U.S. production of rice by class. Objective survey data for selected States; corn plant population, number of ears, row width distribution and percent of samples processed in the lab, soybean row width distribution, number of pods with beans per 18 square feet and percent of samples processed in the lab.

December 10. Indicated area harvested, yield and production as of December 1 for cotton, sugarcane for sugar, and seed. Indicated production of cottonseed.

Crop Production 2025 Annual Summary

January 12. Acreage, yield, and production data for 2025 and revised for 2024. Objective survey data for selected States; corn plant populations, number of ears per acre, row width distribution; soybean number of pods with beans per 18 square feet; row width distribution.

Crop Production Historical Track Records

April 8. This report includes a historical data series and a comparison of preliminary to final planted and harvested crop acreage and a comparison of preliminary crop production forecasts to final and end-of-year crop production estimates.

Crop Progress

35 issues. First workday of the week during growing season. Issued weekly during the growing season April-November; this report lists planting, selected development stages and harvesting progress and overall condition of selected crops in major producing States. The data, summarized by crop and by State, are republished in the *Weekly Weather and Crop Bulletin* released by WAOB.

Crop Values 2025 Annual Summary

February 26. Marketing year average prices and value of production of principal crops, preliminary 2025 and revised 2023 and 2024. Note: State estimates for fruits and nuts are included in “*Noncitrus Fruits and Nuts 2025 Summary*.”

Current Agricultural Industrial Reports (CAIR)

NASS publishes four CAIR releases. They are Grain Crushing and Co-Products Production, Flour Milling Products, Cotton System Consumption and Stocks, and Fats and Oils: Oilseed Crushing, Production, Consumption and Stocks.

Flour Milling

Four issues and an annual summary. *February 2, May 1, August 3, November 2.* This quarterly report covers all firms in the United States operating wheat and rye flour mills. Type of data collected are amount of flour and millfeed produced from wheat and rye.

Flour Millings 2025 Annual Summary

May 1.

Field Crops *continued*

2025 North American Flour Milling

May 13. This publication is a result of a joint effort by Statistics Canada and NASS to release the flour milling production information for both countries within one publication.

Cotton System Consumption and Stocks *(12 monthly issues and an annual summary)*

January 2, February 2, March 2, April 1, May 1, June 1, July 1, August 3, September 1, October 1, November 2, December 1. Monthly totals for running bales, end of month stocks in warehouses and cotton spinning facilities for major States and U.S Consumption of stocks and spindle utilization.

Cotton System Consumption and Stocks 2025 Annual Summary

March 2.

Fats & Oils: Oilseed Crushings, Production, Consumption and Stocks *(12 monthly issues and an annual summary)*

January 2, February 2, March 2, April 1, May 1, June 1, July 1, August 3, September 1, October 1, November 2, December 1.

This is a monthly report that covers businesses that produce various edible and inedible fats and oils. This report also includes data that covers all establishments crushing or solvent processing vegetable oil bearing materials (oilseeds, beans, nuts, etc.); including establishments using a continuous process that immediately refines the oil. Type of data collected are amount of crop crushed, amount of processed oil and feed produced.

Fats & Oils: Oilseed Crushings, Production, Consumption and Stocks 2025 Annual Summary

March 2.

2025 North American Grain and Oilseed Crushing

March 13. This publication is a result of a joint effort by Statistics Canada and NASS to release the soybean and canola seed crushings information for both countries within one publication.

Grain Crushings and Co-Products Production *(12 monthly issues and an annual summary)*

January 2, February 2, March 2, April 1, May 1, June 1, July 1, August 3, September 1, October 1, November 2, December 1.

This is a monthly report that covers consumption of corn and sorghum. The publication provides data about agricultural commodities consumed for alcohol and other uses as well as the production of co-products and products in the United States.

Grain Crushings and Co-Products Production 2025 Annual Summary

September 1.

Grain Stocks *(Four issues)*

January 12, March 31, June 30, September 30.

January 12. On and off farm stocks of all wheat, Durum wheat, corn, sorghum, oats, barley, and soybeans on December 1, 2025, by State; revisions of all wheat, Durum wheat, corn, oats, barley, sorghum, soybeans, flaxseed, rye, canola, mustard seed, safflower, rapeseed and sunflower for 2025. Number and capacity of off-farm storage facilities and capacity of on-farm storage facilities on December 1, 2025. On and off farms stocks of dry peas, lentils, and chickpeas on December 1, 2025, and revision for June 1, 2025.

March 31. On and off farm stocks of all wheat, Durum wheat, corn, sorghum, oats, barley, soybeans, and sunflower on March 1 by State and previous quarter revisions.

June 30. On and off farm stocks of all wheat, Durum wheat, corn, oats, barley, sorghum, soybeans, flaxseed, canola, rapeseed, dry peas, lentils, chickpeas, and rye on June 1 by State and previous quarter revisions.

September 30. On and off farm stocks of all wheat, Durum wheat, corn, oats, barley, soybeans, sorghum, sunflower, safflower and mustard seed on September 1 by State and previous quarter revisions. Revised 2024 soybean and corn acreage, yield and production.

National Hemp Report

April 16. This report contains hemp acreage, yield, production and value for industrial, floral, grain, fiber and seed. Breakouts by hemp grown in the open and hemp grown under cover for each type of hemp.

Hop Stocks *(Two issues)*

March 16, September 18. Issues contain data for Grower, dealer and brewer stocks March 1 and September 1.

National Hop Report

December 18. Area harvested, yield, production, price, and value by State.

North American Potatoes *(Two issues)*

February 6, December 11. This publication is the result of a joint effort by NASS, Agriculture Division, Statistics Canada and Servicio de Informacion Agroalimentaria y Pesquera (SIAP) to provide producers with additional information about potato production in North America. The release includes area planted and harvested, yield, production, utilized production, market year average price and value of sales for both countries.

The ASB calendar is published each year and highlights release dates for agricultural surveys and reports.

If you would like a copy of the ASB calendar:

1. **Detach this copy for immediate use.**
2. **Download the pdf file from the NASS website.**
Visit the NASS website www.nass.usda.gov, click the “publications” tab in the main menu, scroll to the “reports calendar by year” section and download the file.
3. **Order pocket calendars from the NASS website.**
Visit the NASS website www.nass.usda.gov, click the “publications” tab in the main menu, scroll to the “reports calendar by year” section and click the link that says “click here to order 2025 ASB pocket calendars”.



2026 Agricultural Statistics Board Calendar



Monday	Tuesday	Wednesday	Thursday	Friday
5	6 Dairy Products	7 State Stories Broiler Hatchery	8 Slaughter Weekly	9 Peanut Prices
12 Crop Production - Ann. Wheat/Wheat/Corn Seedlings Wheat/Wheat/Canada Seedlings Cotton Ginnings Turkey Hatchery	13	14 Broiler Hatchery	15 Slaughter Weekly	16 Peanut Prices
19 HOLIDAY	20 Chickens and Eggs	21 Broiler Hatchery	22 Slaughter Weekly Livestock Slaughter	23 Cotton Ginnings Cattle on Feed Cold Storage Turkey Production Peanut Prices Poultry Slaughter
26	27 Peanut Stocks and Processing	28 Broiler Hatchery	29 Slaughter Weekly	30 Agricultural Prices Cattle Egg Products Peanut Prices Sheep and Goats
2 Cotton System Fats & Oils Flour Milling Grain Crushings	3	4 State Stories Broiler Hatchery	5 Slaughter Weekly Dairy Products	6 North American Potatoes Peanut Prices
9 Capacity of Refrigerated Warehouses Catfish Production	10 Crop Production Cotton Ginnings	11 Broiler Hatchery	12 Slaughter Weekly Turkey Hatchery Vegetables - Ann.	13 Cost of Pollination Farms and Land in Farms Peanut Prices
16 HOLIDAY	17 Chickens and Eggs - Ann.	18 Broiler Hatchery Peanut Stocks	19 Slaughter Weekly Livestock Slaughter	20 Cattle on Feed Milk Production Peanut Prices Poultry Slaughter
23 Chickens and Eggs	24 Cold Storage	25 Broiler Hatchery	26 Planting Crops 2022 Census of Horticulture Specialties Crop Values Peanut Stocks and Processing	27 Agricultural Prices Cold Storage - Ann. Egg Products Peanut Prices Poultry Slaughter - Ann. Trout Production
2 Cotton System Cotton System - Ann. Fats & Oils Fats & Oils - Ann. Grain Crushings	3	4 State Stories Broiler Hatchery U.S. and Canadian Cattle and Sheep U.S. and Canadian Hogs	5 CE: Barley, Oats, Winter Wheat, Durum Wheat, Spring Wheat Slaughter Weekly Dairy Products	6 Peanut Prices
9	10 Crop Production Cotton Ginnings	11 Broiler Hatchery Price Reactions after USDA Crop Reports Price Reactions After USDA Livestock Reports	12 Tenure, Ownership, and Transition of Agricultural Land (TOTAL) Slaughter Weekly	13 Honey North American Grain and Oilseed Crushings Peanut Prices Turkey Hatchery
16 Hop Stocks	17	18 Broiler Hatchery	19 Slaughter Weekly Livestock Slaughter	20 Cattle on Feed Milk Production Peanut Prices
23 Chickens and Eggs	24 Cold Storage	25 Broiler Hatchery	26 Hogs and Pigs Slaughter Weekly Peanut Stocks and Processing	27 Egg Products Peanut Prices Poultry Slaughter
30 Agricultural Prices	31 Grain Stocks Prospective Plantings Rice Stocks			

January

Monday	Tuesday	Wednesday	Thursday	Friday
6 Crop Progress	7	8 Broiler Hatchery	9 Slaughter Weekly	10 Crop Production Peanut Prices
13 Turkey Hatchery Crop Progress	14	15 Agricultural Chemical Usage - Fruits Broiler Hatchery Catfish Production	16 Slaughter Weekly	17 Peanut Prices
20 Chickens and Eggs Crop Progress	21	22 Broiler Hatchery Milk Production	23 Slaughter Weekly Livestock Slaughter	24 Cattle on Feed Cold Storage Farm Production Expenditures Peanut Prices Poultry Slaughter
27 Peanut Stocks and Processing Crop Progress	28	29 Broiler Hatchery	30 Slaughter Weekly	31 Agricultural Prices Cash Rents- State Egg Products Land Values Peanut Prices
3 Cotton System Fats & Oils Flour Milling Grain Crushings Honey, Bag Colonies Crop Progress	4	5 Broiler Hatchery	6 Slaughter Weekly Dairy Products	7 Peanut Prices
10 Crop Progress	11	12 Crop Production Cotton Ginnings Broiler Hatchery Turkey Hatchery	13 Slaughter Weekly	14 Peanut Prices
17 Crop Progress	18	19 Broiler Hatchery Mushrooms	20 Rice Stocks Slaughter Weekly Livestock Slaughter	21 Cattle on Feed CE: Cash Rents Milk Production Peanut Prices
24 Chickens and Eggs Cold Storage Crop Progress	25 Poultry Slaughter	26 Broiler Hatchery Peanut Stocks and Processing U.S. and Canadian Cattle U.S. and Canadian Hogs	27 Slaughter Weekly Citrus Fruits	28 Peanut Prices
31 Agricultural Prices Egg Products Crop Progress				
1 Cotton System Fats & Oils Grain Crushings Grain Crushings - Ann.	2 Broiler Hatchery	3 Slaughter Weekly Dairy Products	4 Peanut Prices	
8 HOLIDAY	8 Crop Progress	9 Broiler Hatchery	10 Slaughter Weekly	11 Crop Production Cotton Ginnings Peanut Prices
14 Livestock Historical Track Records Turkey Hatchery Crop Progress	15	16 Broiler Hatchery	17 Slaughter Weekly	18 Cattle on Feed Hop Stocks Peanut Prices
21 Chickens and Eggs Crop Progress	22 Cotton Ginnings Milk Production	23 Broiler Hatchery	24 Hogs and Pigs Slaughter Weekly Livestock Slaughter	25 Cold Storage Peanut Stocks and Processing Potatoes Poultry Slaughter Turkeys Raised
28 Crop Progress	29 Agricultural Prices	30 Grain Stocks Small Grains Summary Broiler Hatchery Egg Products		

July

August

September

February

March

April				October			
6	Crop Progress	▲	7 Hatchery Production - Am.	1 State Stories Broiler Hatchery Cotton System Fats & Oils Grain Crushings	2 Slaughter Weekly Dairy Products Peanut Prices	3	1 Slaughter Weekly Cotton System Fats & Oils Grain Crushings
13	Turkey Hatchery Crop Progress	▲	14	15 Broiler Hatchery	16 Slaughter Weekly National Hemp Report	17	17 Cattle on Feed Peanut Prices Potato Stocks
20	Chickens and Eggs Crop Progress	▲	21	22 Broiler Hatchery Livestock Slaughter - Am. Milk Production	23 Slaughter Weekly Livestock Slaughter	24	24 Cold Storage Dairy Products - Am. Peanut Prices Poultry Slaughter
27	Peanut Stocks and Processing Crop Progress	▲	28	29 Broiler Hatchery Egg Products	30 Agricultural Prices Slaughter Weekly Meat Animals - PDI Milk - PDI Poultry - Production and Value	31	31 Agricultural Prices Egg Products Peanut Prices

May				November			
4	Crop Progress	▲	5 CE: Corn, Soybeans, Sorghum	6 Broiler Hatchery Dairy Products	7 Slaughter Weekly Dairy Products	8	8 Agricultural Chemical Usage - Field Crops Peanut Prices
11	Crop Progress	▲	12 Crop Production Cotton Ginnings - Am. CE: Cattle & Sheep CE: Cotton Turkey Hatchery	13 Broiler Hatchery North American Flour Milling Products Summary	14 Slaughter Weekly	15	15 Peanut Prices
18	Crop Progress	▲	19 Chickens and Eggs	20 Broiler Hatchery	21 Slaughter Weekly Livestock Slaughter	22	22 Cattle on Feed CE: All Rice, Peanuts Cold Storage Milk Production Peanut Prices Poultry Slaughter
25	HOLIDAY	▲	26 Crop Progress	27 Broiler Hatchery	28 Slaughter Weekly Peanut Stocks and Processing	29	29 Agricultural Prices Egg Products Peanut Prices

June				December			
1	Cotton System Fats & Oils Grain Crushings Crop Progress	▲	2	3 Broiler Hatchery	4 Slaughter Weekly Dairy Products	5	5 Peanut Prices
8	Crop Progress	▲	9	10 Broiler Hatchery	11 Crop Production Slaughter Weekly	12	12 Peanut Prices
15	Turkey Hatchery Crop Progress	▲	16	17 Floriculture Crops Broiler Hatchery	18 Cattle on Feed Slaughter Weekly Peanut Prices Potato Stocks	19	19 HOLIDAY
22	Chickens and Eggs Milk Production Crop Progress	▲	23	24 Broiler Hatchery	25 Hogs and Pigs Slaughter Weekly Cold Storage Livestock Slaughter	26	26 Peanut Prices Peanut Stocks and Processing Poultry Slaughter
29	Agricultural Prices Crop Progress	▲	30 Acreage Grain Stocks Rice Stocks Egg Products	31	31	31	31


12:00 p.m. release after lockup


12:00 p.m. release


3:00 p.m. release after lockup


4:00 p.m. release


Remaining reports are issued at 3 p.m.



Field Crops *continued*

Peanut Prices

Weekly on Friday. U.S. average price and marketing by type of peanut (Runner, Spanish, Valencia, and Virginia).

Peanut Stocks and Processing *(12 monthly issues)*

January 27, February 26, March 26, April 27, May 28, June 26, July 27, August 26, September 25, October 27, November 25, December 28. The reports include the stocks at end of previous month; millings, production and disappearance of milled products, previous month for the U. S.

Revised season totals shown in August release.

Potatoes 2025 Annual Summary

September 25. Production, farm disposition, value and stocks by State and utilization of potatoes for the United States, 2025 crop.

Potato Stocks *(Four issues)*

February 18, April 17, June 18, December 18. Grower, processor, and local dealer storage stocks in producing areas, first of the month by State.

Price Reactions After USDA Crop Reports

March 11. This report describes the market price reaction during the time periods surrounding the release of crop production reports.

Prospective Plantings

March 31. Expected plantings as of March 1 for corn, all wheat, winter wheat, Durum wheat, other spring wheat, oats, canola, barley, cotton, rice by length of grain, all sorghum, dry edible beans, dry edible peas, and lentils, chickpeas, soybeans, sunflower, flaxseed, peanuts, and sugarbeets; acreage for harvest of hay and tobacco (by class and type).

Rice Stocks *(Five issues)*

January 12, March 31, June 30, August 20, October 22. Rough and milled rice stocks on and off farms, December 1, 2025, March, June, August, and October (California only) by State and stocks by length of grain classes (five Southern States and California).

Small Grains 2026 Annual Summary

September 30. Acreage, yield and production of wheat, oats, barley, and rye for 2026, including revised data for 2025 and Production of wheat by class. Objective survey data for winter wheat number of heads per square foot.

Winter Wheat and Canola Seedings

January 12. Seeded acreage of 2026 winter wheat; seedings of Durum wheat (AZ and CA). Seeded acreage of 2026 winter canola (KS and OK).

World Agricultural Supply and Demand Estimates. Issued monthly, WASDE provides the most current USDA forecasts of U.S. and world supply-use balances of major grains, soybeans and products and cotton; and U.S. supply and use of sugar and livestock products.

Survey Methodology and Quality Measures. Refer to page 25, NASS Survey Methodology and Quality Measures, for additional information. Additional reference: Methodology and Quality Measures.

Fruits, Nuts, and Vegetables

Agricultural Prices *(12 monthly issues)*

All issues present prices received by farmers for principal crops, livestock, and livestock products; indexes of prices received by farmers; parity prices; prices paid for input items and feeder livestock; indexes of prices paid by farmers and livestock/poultry feed price ratios. The NASS Quick Stats database is updated monthly with historical index revisions at www.nass.usda.gov. A description of parity prices including authority for, method of computation and prices used in parity computations. (See Economic Agricultural Prices for additional information).

Citrus Fruits 2026 Summary

August 27. Annual summary of acreage, yield, production, use, price, and value 2025-26 crop and revised 2024-25 crop.

Coffee

January 23. This report contains bearing acreage, yield, total production, utilized production, average price, and value of production estimates for the current and previous two seasons. All components are published for cherry equivalent basis, and quantity and average price for utilized production is included for parchment and green equivalent basis.

Fruits, Nuts, and Vegetables *continued*

Cold Storage

Refer to Dairy.

Cold Storage 2025 Summary

Refer to Dairy.

Crop Production

Refer to Field Crops.

Crop Values 2025 Summary

Refer to Field Crops.

Mushrooms

August 19. Agarics mushrooms: Area in production, volume of sales, utilization, price per pound, value of sales and by selected States and U.S. for July 1, 2025 - June 30, 2026, and intentions for the next season. Brown mushrooms: volume of sales and value of sales and U.S. for July 1, 2025 - June 30, 2026.

Specialty mushrooms: production, volume of sales, price per pound and value of sales by variety and U.S. Also, area in production which includes natural wood outdoor logs, natural wood undercover and indoor logs and all other production media by variety and U.S. Sales of all certified organic mushroom at the U.S. level.

Noncitrus Fruits and Nuts 2025 Annual Summary

May 1. Annual summary of acreage, yield, production, use, price, and value of 2025 crop by State. Includes data for apples, apricots, avocados, berries, cherries, coffee, cranberries, dates, grapes, kiwifruit, nectarines, olives, papayas, peaches, pears, plums, prunes, strawberries, almonds, hazelnuts, macadamias, pecans, pistachios and walnuts.

Vegetable 2025 Annual Summary

February 12. End-of-season 2025 estimates of acreage, yield, production, marketing year average price, value and utilization for artichokes, asparagus, snap beans, broccoli, cabbage, cantaloupe, carrots, cauliflower, celery, sweet corn, cucumbers, garlic, honeydews, head lettuce, leaf lettuce, onions, romaine lettuce, bell peppers, chile peppers, pumpkins, spinach, strawberries, squash, sweet potatoes, tomatoes and watermelons.

Vegetables Usual Planting and Harvesting Dates

NASS handbook Number 507.

This handbook identifies the usual planting and harvesting dates for fresh market and processing vegetables as well as principal producing counties and major varieties for the vegetables covered in NASS's national program of crop estimates.

Survey Methodology and Quality Measures. Refer to page 25, NASS Survey Methodology and Quality Measures, for additional information. Additional reference: Methodology and Quality Measures.

Horticulture and Floriculture

Floriculture Crops 2024 Annual Summary

February 26. Production, price, and value of wholesale sales for US and 28 selected States and growers having \$100,000 or more in sales. Growing area for growers with \$10,000 or more in sales. Issue covers cut flowers, potted flowering plants, foliage, annual bedding/garden plants, herbaceous perennials, cut cultivated greens, propagative floriculture material.

Floriculture Crops 2025 Annual Summary

June 17. Production, price, and value of wholesale sales for US and 28 selected States and growers having \$100,000 or more in sales. Growing area for growers with \$10,000 or more in sales. Issue covers cut flowers, potted flowering plants, foliage, annual bedding/garden plants, herbaceous perennials, cut cultivated greens, propagative floriculture material.

2024 Census of Horticultural Specialties

February 26. www.nass.usda.gov/AgCensus. Provides data at national and state levels on number and kinds of horticultural specialty operations, value of sales, and types of products. Results are available online only at www.nass.usda.gov/AgCensus.

Livestock

Cattle (2 issues)

January 30, July 24.

January 30. Inventory number by class of all cattle and calves as of January 1, 2026, and number of calves born during 2025 by State and U.S. Number of all cattle and number by classes July 1, 2025, U.S. Total number on feed January 1, 2026, by State and U.S.

July 24: Inventory number by class of all cattle and calves as of July 1, 2026, U.S. Expected 2026 calf crop, U. S. Total number on feed July 1, 2026, U.S.

Cattle on Feed (12 monthly issues)

January 23, February 20, March 20, April 17, May 22, June 18, July 24, August 21, September 18, October 23, November 20, December 18. All issues present monthly total number on feed, placements by weight group, marketings and other disappearance for feedlots with 1,000 head or more capacity for major States and U.S. Number on feed by class, shown for feedlots with 1,000 head or more capacity for major States and the U.S. in January, April, July, and October reports.

Livestock *continued*

(Cattle on Feed continued)

Number of feedlots and fed cattle marketings during 2025 and January inventory 2026 by size groups for U.S. in February report.

Cost of Pollination

Feb. 13, Dec 11. Annual report that includes statistics on the number of acres paid to be pollinated, the average price per acre, and prices per honeybee colony for selected crops.

Dairy Products *(12 monthly issues and an annual summary)*

January 6, February 5, March 5, April 2, May 6, June 4, July 2, August 6, September 3, October 5, November 5, December 3. Production of butter, cheese, frozen products, evaporated, condensed, dry milk and whey products. Shipments, stocks and prices of dry milk and whey products, major States and U.S.

Dairy Products 2025 Annual Summary

April 24. Summary of production for manufactured dairy products for 2025 and revised data for 2024.

Hogs and Pigs *(Four quarterly issues)*

March 26, June 25, September 24, December 23.

March 26. Inventory number by class as of March 1; December 2025 – February 2026 farrowings and pig crop; March – August 2026 intended farrowings by major States and U.S.

June 25. Inventory number by class as of June 1; March – May 2026 farrowings and pig crop; June – November 2026 intended farrowings by major States and U.S.

September 24. Inventory number by class as of September 1; June – August 2026 farrowings and pig crop; September 2026 – February 2027 intended farrowings by major States and U.S.

December 23. Inventory number by class of all hogs and pigs as of December 1; September – November 2026 farrowings and pig crop; December 2026 – May 2027 intended farrowings, major States and U. S.; annual farrowings (December 2025 – November 2026) by State and U.S.

Note: For more hogs and pigs information, see Livestock Slaughter, Meat Animals: Production, Disposition and Income, and Agricultural Prices February issue.

Honey

March 13. Annual report of number of colonies producing honey, yield per colony, honey production, average price, and value, 2025 and revised 2024; honey stocks as of December 15, 2025, by State and U.S.

Honeybee Colonies

August 3. Annual report of honeybee colonies, lost colonies, added colonies, renovated colonies and colonies affected by stressors by State and U.S.

Livestock Historical Track Records

September 14. This report compares the preliminary inventory or production estimates to the final inventory or production estimates for cattle, hogs and pigs, sheep and lambs, milk production, broilers, eggs, and turkeys.

Livestock Slaughter *(12 monthly issues and an annual summary)*

January 22, February 19, March 19, April 23, May 21, June 25, July 23, August 20, September 24, October 22, November 19, December 24. Number of head, live weight and dressed weight of cattle, calves, sheep and lambs, and hogs and pigs slaughtered in commercial plants and number by class in federally inspected plants by State. Also red meat production by species by State and U.S.

Livestock Slaughter 2025 Annual Summary

April 22. Annual summary for total livestock slaughter and red meat production for 2025 by State and months. Number of cattle, calves, sheep and lambs and hogs and pigs slaughtered in federally inspected plants by class by State and U.S. Number of goats and bison slaughtered in federally inspected plants in 2025, U.S. weekly number of head slaughtered in federally inspected plants by species and class, U.S. number of federally and non-federally inspected plants and number of head slaughtered in 2025. Also, number of head slaughtered in federally inspected plants by size group and species, U.S.

Meat Animals Production, Disposition, and Income 2025 Annual Summary.

April 30. Annual balance sheet and income estimates for cattle and hogs. Includes estimates of beginning and ending inventories, births, deaths, inshipments and marketings. Also includes 2024 and 2025 total production and marketings in pounds, value of production, cash receipts, home consumption and gross marketings by State and U.S.

Price Reactions After USDA Livestock Reports

March 11. This report describes the market price reaction during the time periods surrounding the release of livestock inventory report.

Sheep and Goats

January 30. Sheep and lamb inventory by class by State and U.S., 2026. Lamb crop by State and U.S., 2025. January 1 inventory of angora, milk and meat and other goats. Number of sheep shorn, wool production, price and value by State for 2025. Number of goats clipped, mohair production, and value for Arizona, New Mexico, and Texas for 2025. (*For more sheep information, see Livestock Slaughter*)

Overview of the U.S. Cattle Industry

June 24, 2016. This report provides information on cattle supply and disposition numbers and trends which have implications for future cattle supplies. The report is provided to the industry and data users to provide a better understanding of the relationships within the cattle industry.

Overview of the U.S. Hog Industry

October 29, 2015. The Overview of the U.S. Hog Industry report provides an official periodic review of efficiency trends and changes in the structure of the breeding herd. This report also notes changes in hog operation size groups, compares historic hog prices, and reviews live hog imports and marketings. This report compares 2014 production year data to the 2008 production data released in the Overview of the U.S. Hog Industry report published in October 2009.

U.S. & Canadian Cattle and Sheep

March 4. Inventory by class of all cattle and calves and number of calves born for U.S., and Canada, combined. Inventory by class of all sheep and lambs and number of lambs born for U.S., Canada and combined.

U.S. & Canadian Cattle

August 26. Inventory by class of all cattle and calves and number of calves born for U.S. and Canada, combined.

U.S. and Canadian Hogs (Two issues)

March 4, August 26. This release contains inventory, sows farrowed and pig crop for U.S. and Canada, combined.

Survey Methodology and Quality Measures. Refer to page 25, NASS Survey Methodology and Quality Measures, for additional information. Additional reference: Methodology and Quality Measures.

Note: For more cattle information, see Livestock Slaughter, Meat Animals: Production, Disposition and Income and Agricultural Prices February issue.

Poultry

Agricultural Prices (12 monthly issues)

All issues present prices received by farmers for principal crops, livestock, and livestock products; indexes of prices received by farmers; parity prices; prices paid for input items and feeder livestock; indexes of prices paid by farmers and livestock/poultry feed price ratios. The NASS Quick Stats database is updated monthly with historical index revisions at www.nass.usda.gov. A description of parity prices including authority for, method of computation and prices used in parity computations. (*For Poultry Prices, see the Agricultural Prices monthly breakout in the Economics section.*)

Broiler Hatchery (52 weekly issues)

Number of broiler chicks placed, and eggs set for the previous week, by State and United States. Available every Wednesday or if Federal holiday is on a Tuesday or Wednesday then on Thursday.

Chickens and Eggs (12 monthly issues and an annual summary)

January 20, February 23, March 23, April 20, May 19, June 22, July 20, August 24, September 21, October 20, November 23, December 21. Number of layers on hand, eggs per 100 layers, and total eggs produced during preceding month by type of flock by State and U.S. Number of layers and eggs produced per 100 layers on the first of the month by type of flock. Pullet chicks added and layers' disposition at the U.S. level. Layers being molted and molt completed during the previous month by State and U.S. U.S. commercial hatchery data on number of broiler-type and egg-type chicks hatched during preceding month, State and U.S. and number of eggs in incubators on the first of the month by region and U.S. Number of broiler-type pullet chicks for hatchery supply flocks (total and domestic) and number of egg-type pullet chicks for hatchery supply flocks, U.S.

Chickens and Eggs 2025 Annual Summary

February 17. Revised monthly estimates of the number of layers on hand, rate of lay and egg production by State and U.S. for 2024 and 2025. Revised egg production during the month by type, by State and U.S. December 1, 2024 and 2025 chicken inventories and values by State and U.S.

Cold Storage, monthly

Refer to Dairy section for more information.

Cold Storage 2025 Annual Summary*Refer to Dairy.***Egg Products (12 monthly issues)**

January 30, February 27, March 27, April 29, May 29, June 30, July 31, August 31, September 30, October 30, November 30, December 30. Federally inspected, shell eggs broken, form in which broken.

Hatchery Production 2025 Annual Summary

April 7. U.S. commercial hatchery data on number of broiler- type and egg-type chicks hatched, monthly, by State and U.S. for 2025 and revised data for 2024. Number of eggs in incubators on the first of each month by region and U.S. broiler chicks placed and eggs set by weeks by State and United States. Turkey eggs set and net poults placed, poults hatched U.S., capacity of chicken and turkey hatcheries by region and U.S.

Livestock Historical Track Records.*Refer to Livestock.***Poultry Production and Value 2025 Annual Summary**

April 30. Estimates of production and value for commercial broilers, eggs, turkeys raised, and chickens (excluding commercial broilers) sold for 2024-2025 by State and U.S.

Poultry Slaughter (12 monthly issues plus an annual summary)

January 23, February 20, March 27, April 24, May 22, June 26, July 24, August 25, September 25, October 23, November 25, December 23. Number of head and pounds slaughtered under Federal inspection by type, for the U.S. Total liveweight of poultry slaughtered and condemnations by State and U.S.

Poultry Slaughter 2025 Annual Summary

February 27. Also available as a separate issue in the above subscription. Number of poultry slaughtered by month, by type, and annual total for the United States. Pounds certified ready-to-cook, ante-mortem, and post-mortem condemnations by type, by month and the U.S. total.

Turkey Hatchery (12 monthly issues)

January 12, February 12, March 13, April 13, May 12, June 15, July 13, August 12, September 14, October 13, November 13, December 14. Number of turkey eggs in incubators on first of current month, net poults placed, and poults hatched by month and the U.S. total

Turkeys Raised

September 25. Number of turkeys raised during preceding year and raised during current year, by State and U.S.

Overview of the U.S. Turkey Industry

April 30, 2014. This report presents 2008-2013 historical information on the U.S. turkey industry. NASS survey procedures and methodology are presented with a graphical interpretation of the data.

Survey Methodology and Quality Measures. Refer to page 25, NASS Survey Methodology and Quality Measures, for additional information. Additional reference: Methodology and Quality Measures.

**NASS Survey Methodology and Quality Measures**

Methodology and quality measures reports are published to increase the transparency of NASS's survey processes and provide information on the quality of its estimates. For methodology information visit [USDA - National Agricultural Statistics Service - Methodology and Quality Measures](#) and select the commodity you are interested in from the listed report titles. The link will provide the questionnaires used to collect the survey data, a detailed methodology of the surveys used to produce the report, and specific quality measures such as response rates and coefficients of variation for each survey iteration. Reports are usually published within 30 days of the original report release.

Methodology reports typically describe the scope and purpose, survey timeline, sampling, data collection, editing, analysis, estimators, and estimation processes.

Through education and outreach NASS aims to assist data users in understanding and interpreting NASS's programs and publications. For information to better understand agricultural statistics go to www.nass.usda.gov, click 'survey' in the tool bar and then choose Understanding Agricultural Statistics in the drop down menu. Here you will find information on regulations guiding the agency, NASS agricultural statistics programs, and data quality and methodology.

Index

This index identifies the Agricultural Statistics Board reports carrying estimates of agricultural commodities and related subjects. The index is designed to assist data users interested in specific aspects of the agricultural estimating program.

Agricultural Chemicals

Agricultural Chemical Usage (Field Crops) – May	9
Agricultural Chemical Usage (Fruits); (Vegetables) (Fruits and Vegetables alternate years)	9
Livestock Chemical Usage (Sheep)	9
Postharvest Application (Wheat)	9

Agricultural Prices

Monthly (Indexes)	12
-------------------------	----

Almonds

Noncitrus Fruits and Nuts – May annual	22
Crop Production - May and July	14
Crop Values – Feb	15

Apples

Prices: Agricultural Prices – monthly	13
Crop Values – Feb	15
Noncitrus Fruits and Nuts - May annual	22
Crop Production – Aug	14

Apricots

Noncitrus Fruits and Nuts - May annual	22
Crop Production - July	14
Crop Values - Feb	15

Aquaculture

See Catfish and Trout	9
-----------------------------	---

Artichokes

Crop Values - Feb	15
Vegetables - Feb annual	22

Asparagus

Prices: Agricultural Prices – monthly	12
Crop Values – Feb	15
Vegetables - Feb annual	22

Avocados

Noncitrus Fruits and Nuts – May annual	22
Crop Values - Feb	15

Barley

Acreage: Prospective Planting - Mar; Acreage - June	14
Crop Production - January annual, July, Aug	14
Small Grains Summary - Sept	21
Monthly Marketings: Agricultural Prices - June (U. S. only) and Aug	13
Prices: Agricultural Prices - monthly	12
Crop Values - Feb	15
Production: Crop Production - Jan annual, July, Aug	14
Small Grains Summary - Sept	21
Stock: Grain Stocks - Jan, Mar, June, Sept	16
Value: Crop Values - Feb	15

Beans, Dry Edible

Acreage: Prospective Planting – Mar; Acreage - June	14
Crop Production - Jan annual, Aug, Oct	15
Monthly Marketings: Agricultural Prices - Nov	13
Prices: Agricultural Prices - monthly	12
Crop Values - Feb	15
Production: Crop Production - Jan annual, Aug, Oct	14
Value: Crop Values - Feb	15
By Commercial Class: Crop Production - Jan annual, Aug	14

Beans, Snap

Prices: Agricultural Prices - monthly	12
Crop Values - Feb	15
Vegetables - Feb annual	22

Berries

Noncitrus Fruits and Nuts - May annual	22
Crop Values - Feb	15

Bison

Livestock Slaughter - Apr annual	23
--	----

Biotechnology

Acreage - June	14
----------------------	----

Broccoli

Prices: Agricultural Price - monthly	12
Crop Values - Feb	15
Vegetables - Feb annual	22

Broiler

Prices: Agricultural Prices - monthly	12
Broiler Hatchery - Weekly	24
Feed Price Ratio: Agricultural Prices - monthly	12

Butter

Plants, number: Dairy Products - Apr annual	12
Production: Dairy Products - monthly and Apr annual	12

Cabbage

Crop Values - Feb	15
Vegetables - Feb annual	22

Canola

Prices: Agricultural Prices - monthly	12
Acreage: Prospective Planting - Mar; Acreage - June; Crop Production - Jan annual, July, Aug	14
Crop Values - Feb	15
Production: Crop Production - Jan annual and Oct	14
Stock: Grain Stocks - Jan, Mar, Jun, Sept	16
Value: Crop Values - Feb	15

Cantaloupe

Prices: Agricultural Prices monthly	12
Crop Values - Feb	15
Vegetables - Feb annual	22

Carrots

Prices: Agricultural Prices - monthly	12
Crop Values - Feb	15
Vegetables - Feb annual	22

Cash Rents

Cash Rents Summary	13
--------------------------	----

Catfish

Grower Production: Catfish Production - Feb and July	9
--	---

Cattle and Calves

Beef Products: Cold Storage - monthly	24
Calf Crop: Cattle - Jan	22
Meat Animals - Apr	23
Deaths: Meat Animals - Apr	23
Feedlots, Inventory and Marketing, Number by size group: Cattle on Feed - Feb	22
Feed Price Ratio: Agricultural Prices - monthly	12
Feeder Prices: Agricultural Prices - monthly	12
In shipment: Meat Animals - Apr	23
Inventory: Cattle - Jan	23
Meat Animals - Apr	23
Marketings: Cattle on Feed - monthly, quarterly	22
Meat Animals - Apr	23
On Feed: Cattle on Feed - monthly, quarterly	22
Cattle - Jan and July	22
Placements: Cattle on Feed - monthly, quarterly	22
Prices: Agricultural Prices - monthly	12
Meat Animals - Apr	23
Value of Inventory: Agricultural Prices - Feb	12

Cauliflower

Prices: Agricultural Prices - monthly	12
Crop Values - Feb	15
Vegetables - Feb annual	22

Census of Agriculture

Introduction and Background	9
2022 Census of Agriculture	9

Volume 1, Geographic Area Series.....	10	& Feb annual.....	24
Appendix A. Methodology.....	10	Sales: Poultry - Production and Value - Apr.	25
2022 Census of Puerto Rico.....	10	Slaughter: Poultry Slaughter - monthly.....	25
2022 Outlying Areas.....	10	Value of inventory: Chickens and Eggs - Feb annual.....	24
Volume 2, Subject Series.....	10	Chickpeas	
History.....	10	Acreage: Prospective Plantings - Mar.....	14
American Indian Reservations.....	10	Monthly Marketings: Agricultural Prices - July & Nov.	14
Watershed Tabulations.....	10	Prices: Agricultural Prices - monthly.....	14
Typology.....	10	Crop Values - Feb.....	15
Specialty Crop Tabulation.....	10	Production: Crop Production - Jan annual.....	15
Specialty Crops for Outlying Areas.....	10	Stocks: Grain Stocks - Jan & June.....	16
Volume 3, Special Studies.....	10	Value: Crop Values - Feb.....	15
2023 Census of Aquaculture.....	10	Citrus	
2023 Irrigation and Water Management Survey.....	10	Prices: Agricultural Prices - monthly.....	21
2024 Census of Horticultural Specialties.....	10	Crop Values - Feb.....	15
2025 Local Food Marketing Practices Survey.....	11	Citrus Fruits - Aug.....	21
Rankings and Profiles.....	11	Crop Production - monthly except Aug & Nov.....	21
State and County Profile.....	11	Coffee	
Congressional District Profiles and Rankings.....	11	Noncitrus Fruits and Nuts - May annual.....	22
Online Resources.....	11	Production: Coffee - Jan.....	21
Census Data Query Tool.....	11	Crop Values - Feb.....	22
Highlights.....	11	Cold Storage	
Zip Code Tabulation.....	11	Monthly and Feb Annual.....	22
Custom Census Products.....	11	Capacity of Refrigerated Warehouses.....	22
Navajo Nation Profiles.....	11	Corn, field	
Special Organics Tabulation.....	11	Acreage: Prospective Plantings - Mar.....	14
Census Related.....	11	Acreage - June.....	14
2019 Survey of Irrigation Organizations.....	11	Crop Production - Jan annual, Aug, Sept, Oct, Nov.....	15
2019 National Farmers Market Manager Survey.....	11	Monthly Marketings: Agricultural Prices - Sept (U.S. only)	
Organic Certifiers 2015/2016 Summary.....	11	and Nov.....	14
Tenure, Ownership & Transition of Agricultural Land.....	11	Prices: Agricultural Prices - monthly.....	14
Current Agricultural Industrial Reports.....	15	Crop Values - Feb.....	15
Cotton System Consumption and Stocks.....	16	Production: Crop Production - Jan annual, Aug, Sept, Oct	
Fats & Oils.....	16	Nov.....	15
Flour Millings Products.....	15	Stocks: Grain Stocks - Jan, Mar, June, Sept.....	16
Grain Crashings and Co-Products Production.....	16	Value: Crop Values - Feb.....	15
Celery		Corn, sweet	
Prices: Agricultural Prices - monthly.....	12	Prices: Agricultural Prices - monthly.....	14
Crop Values - Feb.....	15	Crop Values - Feb.....	15
Vegetables - Feb annual.....	22	Vegetables - Feb annual.....	22
Cheese, all types		Cost of Inputs	
Plants, number: Dairy Products - Apr annual.....	12	Farm Production Expenditures - July.....	13
Production: Dairy Products - monthly & Apr annual.....	12	Prices Paid Indexes by Farmers:	
Cheese, American		Agricultural Prices - monthly.....	12
Plants, number: Dairy Products - Apr annual.....	12	Cotton	
Production: Dairy Products - monthly & Apr annual.....	12	Acreage: Prospective Plantings - Mar; Acreage - June.....	14
Cherries		Crop Production - Jan annual, May (Rev.), Aug,	
Noncitrus Fruits and Nuts - May annual.....	22	Sept, Oct, Nov, Dec.....	15
Crop Production - June.....	14	Ginnings: Cotton Ginnings - Jan, Feb, Mar, Aug, Sept, Oct,	
Crop Values - Feb.....	15	Nov, Dec, May annual.....	14
Chickens		Monthly Marketings: Agricultural Prices - Oct.....	14
Chicks hatched: Chickens and Eggs - monthly.....	24	Prices: Agricultural Prices - monthly.....	14
Hatchery Production - Apr.....	25	Crop Values - Feb.....	15
Chicks placed: Broiler Hatchery - weekly.....	24	Production: Crop Production - Jan annual, May (Rev.),	
Hatchery Production - Apr.....	25	Aug, Sept, Oct, Nov, Dec.....	15
Feed-price ratio: Agricultural Prices - monthly.....	24	Value: Crop Values - Feb.....	15
Inventory: Chickens and Eggs - monthly & Feb annual.....	24	Cottonseed	
Poultry - Production and Value - Apr.....	25	Disposition: Crop Production - May (Rev.).	15
Layers Forced molt: Chickens and Eggs - monthly		Prices: Agricultural Prices - monthly (Aug - Feb).....	14
& Feb annual.....	24	Crop Values - Feb.....	15
Inventory: Chickens and Eggs - monthly & Feb annual.....	24	Production: Crop Production - Jan annual, May (Rev.),	
Prices: Agricultural Prices - monthly.....	24	Aug, Sept, Oct, Nov, Dec.....	15
Poultry - Production and Value - Apr.....	25	Value: Crop Values - Feb.....	15
Production: Poultry - Production and Value - Apr.....	25	Cows, milk	
Pullets: Chickens and Eggs - monthly & Feb annual.....	24	Inventory: Milk Production - monthly.....	12
Pullets for Hatchery Supply Flocks: Chickens and Eggs -		Cattle - Jan and July.....	12
monthly & Feb annual.....	24	Milk - Production, Disposition and Income - May.....	12
Rate of lay: Chickens and Eggs - monthly			

Prices: Agricultural Prices - Jan, Apr, Oct.....	12
Production: Milk Production - monthly.....	12
Milk -Production, Disposition and Income - April.....	12
Cranberries	
Noncitrus Fruits and Nuts - May annual.....	22
Crop Production - Aug.....	22
Crop Values - Feb.....	22
Crop Production - See individual commodity of interest.	
Crop Progress - Each Monday during growing season.....	15
Cucumbers	
Prices: Agricultural Prices - monthly.....	14
Crop Values - Feb.....	15
Vegetables - Feb annual.....	22
Dairy	
Farm marketings, income and value: Milk -Production, Disposition and Income - April.....	12
Dairy Products	
Plants, number: Dairy Products - Apr annual.....	12
Production: Dairy Products - monthly & Apr annual.....	12
Dates	
Noncitrus Fruits and Nuts - May annual.....	22
Crop Values - Feb.....	22
Demographics	
Race, Ethnicity and Gender Profiles.....	12
Eggs	
Egg products: Egg Products - monthly.....	24
Cold Storage - monthly and Feb annual.....	24
Eggs in incubators: Broiler Hatchery - weekly.....	24
Hatchery Production - Apr.....	25
Chickens and Eggs - monthly.....	24
Turkey Hatchery - monthly.....	25
Feed-price ratio: Agricultural Prices - monthly.....	24
Prices: Agricultural Prices - monthly.....	24
Poultry -Production and Value - Apr.....	25
Processing: Egg Products - monthly.....	24
Production: Poultry - Production and Value - Apr.....	25
Chickens and Eggs - monthly and Feb annual.....	24
Farm Production Expenditures - July.....	13
Farms and Land in Farms Operations - Feb.....	13
Feed (fed to milk cows)	
Feeder livestock prices: Agricultural Prices - Jan, Apr, July, Oct.....	12
Feed, prices paid: Agricultural Prices - Apr.....	12
Index: Agricultural Prices - monthly.....	12
Feed-price ratios: Agricultural Prices - monthly.....	12
Fertilizer	
Index: Agricultural Prices- monthly.....	12
Agricultural Chemical Reports.....	9
Flaxseed	
Acreage: Acreage - June.....	14
Crop Production - Jan annual.....	21
Prospective Plantings - Mar.....	14
Monthly Marketings: Agricultural Prices - Nov.....	14
Crop Values - Feb.....	15
Production: Crop Production - Jan annual.....	21
Stocks: Grain Stocks - Jan, Mar, Jun, Sept.....	16
Value: Crop Values - Feb.....	15
Floriculture Crops	
Production, price and wholesale value.....	22
Fuel	
Index: Agricultural Prices - monthly.....	12
Total: Farm Production Expenditures - July.....	13
Garlic	
Crop Values - Feb.....	15
Vegetables - Feb annual.....	22

Goats	
Average clip per goat and number clipped: Sheep and Goat - Jan.....	24
Inventory: Sheep and Goats - Jan.....	24
Slaughter: Livestock Slaughter - Apr annual.....	23
Grapefruit	
Prices: Agricultural Prices - monthly.....	21
Crop Values - Feb.....	22
Citrus Fruits - Aug.....	21
Crop Production - monthly except Aug, Sept, Nov.....	22
Crop Values - Feb.....	22
Grapes	
Noncitrus Fruits and Nuts - May annual.....	22
Prices: Agricultural Prices - Monthly.....	21
Crop Production - Aug.....	22
Crop Values - Feb.....	22
Grain Storage Facilities	
Off-Farm Number and Capacity: Grain Stocks - Jan.....	16
On-Farm Capacity: Grain Stocks - Jan.....	16
Harvesting Date	
Vegetables.....	22
Hatchery	
Capacity: Hatchery Production - Apr Annual.....	25
Poults Placed:	
Turkey Hatchery - monthly.....	25
Hatchery Production - Apr annual.....	25
Poult Prices:	
Agricultural Prices - monthly.....	24
Hay	
Acreage: Acreage - June.....	14
Crop Production - Jan annual, Aug, Oct.....	15
Prospective Plantings - Mar.....	21
Monthly Marketings: Agricultural Prices - Aug.....	14
Crop Values - Feb.....	15
Production: Crop Production - Jan annual, Aug, Oct.....	15
Stocks: Crop Production - Jan and May.....	14
Value: Crop Values - Feb.....	15
Hazelnuts	
Noncitrus Fruits and Nuts - May annual.....	22
Crop Production - Sept.....	14
Crop Values - Feb.....	15
Hogs and Pigs	
Deaths: Meat Animals - Apr.....	23
Farrowings: Hogs and Pigs - Mar, June, Sept, Dec.....	23
Feed price ratio: Agricultural Prices - monthly.....	23
Inshipments: Meat Animals - Apr.....	23
Inventory: Hogs and Pigs - Mar, June, Sept, Dec.....	23
Meat Animals - Apr.....	23
Marketings: Meat Animals - Apr.....	23
Pig crop: Hogs and Pigs - Mar, June, Sept, Dec.....	23
Meat Animals - Apr.....	23
Pork products: Cold Storage - monthly.....	12
Prices: Agricultural Prices - monthly.....	12
Meat Animals - Apr.....	23
Production and gross income: Meat Animals - Apr.....	23
Slaughter: Livestock Slaughter.....	23
Value of home consumption, production and sales:	
Meat Animals - Apr.....	23
Value of inventory: Agricultural Prices - Feb.....	12
Honey	
Number colonies of bees: Honey - March.....	23
Price and Value: Honey - March.....	23
Production: Honey - March.....	23
Stocks: Honey - March.....	23
Honeybee Colonies	
Colonies lost - Aug.....	23
Colonies added - Aug.....	23

Colonies renovated - Aug	23
Colonies affected by stressors - Aug	23
Honeydew melons	
Prices: Agricultural Prices - monthly	12
Crop Values - Feb	15
Vegetables - Feb annual	22
Hops	
Crop Production - Jan annual, Aug	14
Hop Stocks - Mar, Sept	16
Prices: Agricultural Prices - Dec	14
Crop Values - Feb	15
National Hop Report - Dec	16
Input Costs in Production	
Farm Expenditures: Prices Paid by Farmers	12
Kiwifruit	
Noncitrus Fruits and Nuts - May annual	22
Crop Values - Feb	22
Land	
Agricultural Land Value - Aug	13
Lemons	
Prices: Agricultural Prices - monthly	21
Crop Values - Feb	15
Crop Production - monthly except Aug, Sept, Nov	14
Citrus Fruits - Aug	21
Lentils	
Acreage: Prospective Plantings - Mar	14
Crop Production - Jan annual and Sept	14
Prices: Agricultural Prices - monthly	14
Crop Values - Feb	15
Production: Crop Production - Jan annual and Sept 11 Stocks	15
Grain Stocks - Jan & Jun	15
Lettuce, head	
Prices: Agricultural Prices - monthly	21
Crop Values - Feb	22
Vegetables - Feb annual	22
Lettuce, leaf	
Prices: Crop Values - Feb	22
Vegetables - Feb annual	22
Lettuce, romaine	
Prices: Crop Values - Feb	22
Vegetables - Feb annual	22
Livestock	
See Bison, Cattle and Calves, Cows, Milk, Dairy, Equine, Goats, Hogs and Pigs, Sheep and Lambs and Slaughter.	
Macadamia Nuts	
Noncitrus Fruits and Nuts - May annual	22
Crop Values - Feb	22
Machinery, new farm	
Farm Production Expenditures - July	13
Index - Agricultural Prices - monthly	21
Maple Syrup	
Crop Production - Jan annual and June	14
Crop Values - Feb	15
Marketing Dates	
Fruit and Tree Nuts	22
Milk	
Feed-price ratio: Agricultural Prices - monthly	12
Milkfat test: Agricultural Prices - monthly	12
Plants: Dairy Products - Apr annual	12
Agricultural Prices - monthly	12
Milk Production, Disposition and Income - Apr	12
Dairy Products - monthly and Apr annual	12
Milk Production - monthly	12
Shipments: Dairy Products - monthly and Apr annual	12
Stocks: Dairy Products - monthly and Apr annual	12
Supply: Milk Production, Disposition and Income - Apr	12
Utilization: Milk Production, Disposition and Income - Apr	12

Milk, used in manufacturing products	
Butterfat: Dairy Products - Apr annual	12
Solids Nonfat: Dairy Products - Apr annual	12
Millet, Proso	
Acreage: Crop Production - Jan annual	14
Acreage - June	14
Production: Crop Production - Jan annual	15
Value: Crop Values - Jan annual & Feb	15
Mohair	
Average clip per goat, number clipped, prices, production and value: Sheep and Goats - Jan	24
Mushrooms	
Mushrooms - Aug	22
Crop Values - Feb	22
Mustard Seed	
Acreage: Crop Production - Jan annual	14
Acreage - June	14
Prices: Agricultural Prices - monthly	14
Crop Values - Feb	15
Production: Crop Production - Jan annual	15
Stocks: Grain Stocks - Jan & Sept	16
Value: Crop Values - Feb	15
Nectarines	
Noncitrus Fruits and Nuts - May annual	21
Crop Values - Feb	22
Oats	
Acreage: Acreage - June	14
Crop Production - Jan annual, July, Aug	15
Prospective Plantings - Mar	21
Small Grains Summary - Sept	21
Monthly Marketings: Agricultural Prices - June (U.S. only) & Aug	14
Prices: Agricultural Prices - monthly	14
Crop Values - Feb	15
Production: Crop Production - Jan annual, July, Aug	15
Small Grains Summary - Sept	21
Stocks: Grain Stocks - Jan, Mar, June, Sept	16
Value: Crop Values - Feb	15
Olives	
Noncitrus Fruits and Nuts - May annual	22
Crop Values - Feb	15
Onions	
Prices: Agricultural Prices - monthly	14
Crop Values - Feb & Aug	15
Vegetables - Feb annual	22
Oranges	
Prices: Agricultural Prices - monthly	21
Crop Values - Feb	15
Citrus Fruits - Aug	21
Crop Production - monthly except Aug & Nov	22
Papayas	
Noncitrus Fruits and Nuts - May annual	22
Crop Values - Feb	15
Peaches	
Noncitrus Fruits and Nuts - May annual	22
Crop Production - May (Calif. Only) & Aug	22
Prices: Agricultural Prices - monthly	21
Crop Values - Feb	22
Peanuts	
Acreage: Acreage - June	14
Prospective Plantings - Mar	21
Monthly Marketings: Agricultural Prices - Aug	14
Prices: Agricultural Prices - monthly	14
Crop Values - Feb	15
Production: Crop Production - Jan annual, Aug, Sept, Oct, Nov	15
Stocks: Peanut Stocks and Processing - monthly	21

Value: Crop Values - Feb	15
Pears	
Prices: Agricultural Prices - monthly	21
Crop Values - Feb	22
Noncitrus Fruits and Nuts - June annual	22
Crop Production - Aug	22
Peas, Dry Edible	
Acreage: Prospective Plantings - Mar	15
Crop Production - Jan annual & Sept	15
Price and Value: Agricultural Prices - monthly	14
Production: Crop Production - Jan annual & Sept	15
Stocks: Grain Stocks - Jan, Mar, Jun, Sept	16
Peas, Green	
Crop Values - Feb	22
Processing: Vegetables - Feb annual	22
Pecans	
Noncitrus Fruits and Nuts - June annual	22
Crop Production - Oct	22
Crop Values - Feb	22
Production: Pecan Production - Jan	22
Peppermint Oil	
Acreage for Oil: Crop Production - Jan annual	22
Price and Value: Crop Values - Feb	22
Production: Crop Production - Jan annual	22
Peppers, Bell	
Crop Values - Feb	22
Vegetables - Feb annual	22
Peppers, Chile	
Vegetables - Feb annual	22
Crop Values - Feb	22
Pistachios	
Noncitrus Fruits and Nuts - June annual	22
Crop Values - Feb	22
Planting Dates	
Field Crops	14
Vegetables	22
Plums	
Noncitrus Fruits and Nuts - June annual	22
Crop Values - Feb	22
Potatoes, All	
Acreage: Crop Production - Jan annual, Sept (Rev.), Nov	21
Disposition, Utilization and Value: Potatoes - Sept	21
Production: Crop Production - Jan annual, Sept (Rev.), Nov	14
Prices: Agricultural Prices - monthly	14
Crop Values - Feb	15
Potatoes - Sept	21
Poultry	
See Broilers, Chickens, Eggs, Hatchery, Turkeys.	
Parity Prices	
Agricultural Prices - monthly and specified months	12
Method of computation: Agricultural Prices	12
Prices used for computations: Agricultural Prices	12
Selected commodities: Agricultural Prices - monthly	12
Prices paid by farmers	
Agricultural Prices - Apr	12
Regional prices: Agricultural Prices - Apr	12
Historical series: Agricultural Prices - Apr	12
Agricultural Chemicals Agricultural Prices - Apr	12
Farm machinery Agricultural Prices - Apr	12
Feeder livestock, Agricultural Prices - monthly	12
Feed Agricultural Prices - Apr	12
Fertilizer Agricultural Prices - Apr	12
Fuels Agricultural Prices - Apr	12
Private lease grazing rate Agricultural Prices - Jan	12
Seeds, field Agricultural Prices - Apr	12
Tractors Agricultural Prices - Apr	12

Prices paid, indexes and subcomponent indexes

Agricultural Prices - monthly	12
Agricultural chemicals	12
Autos and trucks	12
Building, materials	12
Commodities and services	12
Crop and livestock sectors	12
Farm supplies and repairs	12
Farm and nonfarm origin	12
Farm machinery	12
Farm services	12
Farm wage rates	12
Feed	12
Fertilizer	12
Fuels	12
Historical series: Agricultural Prices - Jan	12
Interest - Jan	12
Production	12
Production, interest, taxes and wages	12
Rent - Oct	12
Seeds - Apr	12
Taxes - Jan	12

Prices received by farmers

For specific commodity, see individual crop or livestock item.

Prices received, indexes

Agricultural Prices - monthly	12
Historical series: Agricultural Prices - Jan	12

Proso Millet

Acreage: Acreage - June	14
Crop Production - Jan annual	14
Crop Values - Feb	15
Prices: Agricultural Prices - monthly	12
Production: Crop Production - Jan annual	14
Value: Crop Values - Feb	15

Prunes

Noncitrus Fruits and Nuts - May annual	22
Crop Production - June	14
Crop Values - Feb	15

Pumpkins

Vegetables - Feb annual	22
Crop Values - Feb	22

Rapeseed

Acreage: Acreage - June	14
Crop Production - Jan annual	14
Prices: Agricultural Prices - monthly	12
Crop Values - Feb	15
Production: Crop Production - Jan annual	14
Stocks: Grain Stocks - Jan and Sept	16
Value: Crop Values - Feb	15

Rice

Acreage: Acreage - June	14
Crop Production - Jan annual, Aug, Sept, Oct, Nov	14
Prospective Plantings - Mar	21
By Class: Acreage - June	14
Crop Production - Jan annual, Aug, Sept, Oct, Nov (U.S.)	14
Prospective Plantings - Mar	21
Monthly Marketings: Agricultural Prices - Oct (U.S. only) & Jan (U.S. only)	12
Prices: Agricultural Prices - monthly	12
Crop Values - Feb	15
Production: Crop Production - Jan annual, Aug, Sept, Oct, Nov	14
Stocks: Rice Stocks - Jan, Mar, Jun, Aug, Oct (CA only)	21
Value: Crop Values - Feb	15

Rye

Acreage: Acreage - June	14
Crop Production - Jan annual	14
Small Grains Summary - Sept	21

Prices: Agricultural Prices - Aug.....	12	(bi- yearly).....	12
Crop Values - Feb.....	15	Regional: Cold Storage - Feb annual.....	12
Production: Crop Production - Jan annual.....	14	Strawberries	
Small Grains Summary - Sept.....	21	Prices: Agricultural Prices - monthly.....	21
Stocks: Grain Stocks - Jan, Mar, Jun, Sept.....	16	Crop Values - Feb.....	22
Value: Crop Values - Feb.....	15	Noncitrus Fruits & Nuts - June annual.....	22
Safflower		Vegetables - Feb annual.....	22
Acreage: Acreage - June.....	14	Sugarbeets	
Crop Production - Jan annual.....	14	Acreage: Acreage - June.....	14
Crop Values - Feb.....	15	Crop Production - Jan annual, Aug, Sept, Oct, Nov.....	14
Prices: Agricultural Prices - monthly.....	12	Prospective Plantings - Mar.....	21
Production: Crop Production - Jan annual.....	14	Prices: Agricultural Prices - July.....	14
Stocks: Grain Stocks - Jan and Sept.....	16	Crop Values - Feb.....	15
Value: Crop Values - Feb.....	15	Production: Crop Production - Jan annual, Aug, Sept, Oct, Nov.....	14
Sheep and Lambs		Sugarcane	
Deaths: Sheep and Goats - Jan.....	24	Acreage: Acreage - June.....	14
Inventory: Sheep and Goats - Jan.....	24	Crop Production - Jan annual, Feb, Aug, Sept, Oct, Nov, Dec, Mar.....	14
Lamb and mutton products: Cold Storage - monthly.....	12	Prices: Agricultural Prices - July.....	14
Lamb crop: Sheep and Goats -Jan.....	24	Crop Values - Feb.....	15
Shorn, number: Sheep and Goats - Jan.....	24	Production: Crop Production - Jan annual, Feb, Aug, Sept, Oct, Nov, Dec, Mar.....	14
Slaughter: Livestock Slaughter.....	23	Sunflower	
Value of inventory: Agricultural Prices - Feb.....	12	Acreage: Acreage - June.....	14
Slaughter		Crop Production - Jan annual, and Oct (incl. Rev. for Prev. Year).....	14
Commercial: Livestock Slaughter - monthly & Apr annual.....	23	Prospective Plantings - Mar.....	21
Federal inspection: Livestock Slaughter - monthly & Apr annual.....	23	Monthly Marketings: Agricultural Prices - Nov.....	14
Plants, number: Livestock Slaughter - Apr annual.....	23	Prices: Agricultural Prices - monthly.....	14
Poultry: Poultry Slaughter - monthly.....	23	Crop Values - Feb.....	15
Poultry: Poultry Slaughter - Feb annual.....	23	Production: Crop Production - Jan annual, Oct (includes Rev. for Prev. Year).....	14
Red meat production: Livestock Slaughter - monthly & Apr annual.....	23	Stocks: Grain Stocks - Jan, Mar, Sept.....	16
Sorghum		Value: Crop Values - Feb.....	15
Acreage: Acreage - June.....	14	Support programs, USDA dairy	
Crop Production - Jan annual, Aug, Sept, Oct, Nov.....	14	Dairy Products - monthly.....	12
Prospective Plantings - Mar.....	21	Sweet potatoes	
Monthly Marketings: Agricultural Prices - Sept.....	14	Crop Values - Feb.....	21
Prices: Agricultural Prices - monthly.....	14	Vegetables - Feb annual.....	22
Crop Values - Feb.....	15	Tangerines	
Production: Crop Production - Jan annual, Aug, Sept, Oct, Nov.....	14	Crop Production - monthly except Aug, Sept, Nov.....	22
Stocks: Grain Stocks - Jan, Mar, June, Sept.....	16	Crop Values - Feb.....	22
Value: Crop Values - Feb.....	15	Citrus Fruits - Aug.....	21
Soybeans		Tobacco	
Acreage: Acreage - Jun.....	14	Acreage: Acreage - June.....	14
Crop Production - Jan annual, Aug, Sept, Oct (Rev. for Prev. Year), Nov.....	14	Crop Production - Jan annual (Rev.), July (for Flue-cured), Aug, Sept, Oct.....	14
Prospective Plantings - Mar.....	21	Prospective Plantings - Mar.....	21
Monthly Marketings: Agricultural Prices - Sept.....	14	Crop Values - Feb (Rev.).....	15
Prices: Agricultural Prices - monthly.....	14	Prices: Crop Production - May.....	14
Crop Values - Feb.....	15	Production: Crop Production - Jan annual (Rev.), July (for Flue-cured), Aug, Sept, Oct.....	14
Stocks: Grain Stocks - Jan, Mar, June, Sept.....	16	Value: Crop Values - Feb (Rev.).....	15
Value: Crop Values - Feb.....	15	Crop Production - May (Rev.).....	14
Spearmint Oil		Agricultural Prices - monthly.....	14
Acreage for Oil: Crop Production - Jan annual.....	14	Tomatoes	
Price and Value: Crop Values - Feb.....	15	Prices: Agricultural Prices - monthly.....	21
Production: Crop Production - Jan annual.....	14	Crop Values - Feb.....	22
Spinach		Vegetables - Feb annual.....	22
Crop Values - Feb.....	22	Trout	
Vegetables - Feb annual.....	22	Production: Trout Production - Feb.....	9
Squash, all		Turkeys	
Crop Values - Feb.....	22	Feed-price ratio: Agricultural Prices - monthly.....	24
Vegetables - Feb annual.....	22	Poulters placed: Turkey Hatchery - monthly.....	25
Storage, cold		Hatchery Production - May.....	25
Cold Storage - monthly.....	12		
Capacity: Capacity of Refrigerated Warehouses - Jan			

Prices and value: Poultry - Production and Value - May	25	Crop Values - Feb.....	15
Agricultural Prices - monthly.....	24	Production: Crop Production - Jan annual, May (AZ, CA),	
Production: Poultry - Production and Value - Apr.....	25	June (AZ, CA), July, Aug	14
Raised, number: Turkeys - Jan, Aug.....	25	Small Grains Summary - Sept	21
Poultry - Production and Value - May	25	Stocks: Grain Stocks - Jan, Mar, June, Sept	16
Slaughter: Poultry Slaughter - monthly.....	25	Value: Crop Values - Feb.....	15
Turkey products: Cold Storage - monthly & Feb annual	25	Wheat, Spring (other than Durum)	
Vegetables		Acreage: Prospective Plantings - Mar	14
See individual commodity of interest.		Acreage - June	14
Walnuts		Crop Production - Jan annual, July, Aug	14
Noncitrus Fruits and Nuts - May annual	22	Small Grains Summary - Sept	21
Crop Production - Sept	22	Prices: Agricultural Prices - monthly	14
Crop Values - Feb.....	22	Crop Values - Feb.....	15
Watermelon		Production: Crop Production - Jan annual, July, Aug.....	14
Crop Values - Feb.....	22	Small Grains Summary - Sept	21
Vegetables - Feb annual.....	22	By Class: Crop Production - Jan annual & Aug	14
Wheat, All		Small Grains Summary - Sept	21
Acreage: Acreage - June	14	Value: Crop Values - Feb.....	15
Crop Production - Jan annual	14	Wheat, Winter	
Small Grains Summary - Sept.....	21	Acreage: Small Grains Summary - Sept.....	21
Prospective Plantings - Mar	21	Winter Wheat Seedings - Jan.....	21
Monthly Marketing: Agricultural Prices - June (U.S. only)		Prices: Agricultural Prices - monthly	14
Aug.....	12	Crop Values - Feb.....	15
Prices: Agricultural Prices - monthly.....	14	Production: Crop Production-Jan annual, May, June, July, Aug	14
Crop Values - Feb.....	14	Small Grains Summary - Sept	21
Production: Crop Production - Jan annual	14	By Class: Small Grains Summary - Sept.....	21
Small Grains Summary - Sept.....	21	Crop Production- Jan annual, May, June, July, Aug..	14
By Class: Crop Production - Jan annual, July, Aug	21	Value: Crop Values - Feb.....	15
Small Grains Summary - Sept.....	21	Whey Products	
Stocks: Grain Stocks - Jan, Mar, June, Sept.....	16	Plants, number: Dairy Products - Apr annual.....	12
Value: Crop Values - Feb	15	Production: Dairy Products - monthly and Apr annual.....	12
Wheat, Durum		Stocks: Dairy Products - monthly.....	12
Acreage: Winter Wheat Seedings (AZ, CA only) - Jan	21	Prices: Dairy Products - monthly.....	12
Prospective Plantings - Mar	21	Wool	
Acreage - June	14	Sheep shorn and production: Sheep & Goats - Jan.....	24
Crop Production - Jan annual, May (AZ, CA),		Sheep & Goats - Jan	24
June (AZ, CA) July, Aug	14	Value: Sheep & Goats - Jan.....	24
Small Grains Summary - Sept.....	21		
Prices: Agricultural Prices - monthly.....	14		



Contact Us

Headquarters

Statistics Division

Lance Honig, Acting Director

Crops Branch

Anthony Prillaman, Acting Chief
(202) 720-2127

sm.nass.sd.cb@usda.gov

Field Crops Section

Chris Hawthorn, Head
(202) 720-2127

Fruits, Vegetables & Specialty Crops Section

Fleming Gibson, Head
(202) 720-2127

Data Dissemination Office

Vincent Davis, Head
(202) 720-3384

sm.nass.sd.ddo@usda.gov

Livestock Branch

Travis Averill, Chief
(202) 720-3570

sm.nass.sd.lb@usda.gov

Livestock Section

Vacant, Head
(202) 720-3570

Poultry & Specialty Commodities Section

Vacant, Head
(202) 720-3570

Environmental, Economics, & Demographics Branch

Bryan Combs, Chief
(202) 720-6146

sm.nass.sd.eedb@usda.gov

Environmental & Demographics Section

Julie Weber, Head
(202) 720-6146

Economics Section

Julie Weber, Acting Head
(202) 720-6146

Census and Survey Division

Troy Joshua, Acting Director
(202) 720-4557

sm.as.csd.od@usda.gov

Census Planning Branch

Donald Buysse, Chief
(202) 690-8747

sm.as.md.ssdmb@usda.gov

Census Section

Amanda Dawson, Acting Head
(202) 720-5814

Census Production Section

Amanda Dawson, Head
(202) 720-5814

Data Inquiries:

Phone: [\(800\) 727-9540](tel:8007279540)

NASS Data Online

The NASS website (www.nass.usda.gov) provides easy access to a wide range of information and data products. Through the homepage, you can obtain copies of all reports described in this catalog, find commodity and price specialists and more.

A calendar of scheduled releases is available from the NASS Homepage. In the “**Publications**” dropdown menu, select “**by Date (Reports Calendar)**” under the “**Browse NASS Reports**” section. Then choose the year and month.

Ask a Specialist

NASS maintains a listing of subject and commodity specialists for the various program areas. From the NASS Homepage, on the “**Contact Us**” dropdown menu, select “**Ask a Specialist**” at the bottom left column.

Customer Service

NASS operates an information center, staffed from 7:30 a.m. to 4:00 p.m. ET Monday-Friday, to assist you with accessing reports and data via the Internet, or printed copies. Please call (800) 727-9540.

Quick Stats - Agricultural Statistics Online Database

NASS data is also found in the online Quick Stats database free of charge. Most data are available at or soon after release time. It can be accessed at quickstats.nass.usda.gov or from the NASS homepage under the “**Data and Statistics**” dropdown menu. The web application allows custom queries based on survey or census program, commodities and characteristics, geographic levels, and time periods. The “**Spreadsheet**” option downloads a csv file.

For power users, there are two additional methods to retrieve either large amounts of data or recurring data pulls. One is an API (Application Programming Interface) and the other is large text files containing segments of Quick Stats data refreshed nightly. See the “**Developers**” and “**Help**” tabs at quickstats.nass.usda.gov for more information.

Economics, Statistics and Market Information System (ESMIS)

The ESMIS – National Agricultural Library distributes NASS, and World Agricultural Outlook Board (WAOB) periodicals and data files free of charge via the USDA Economics, Statistics and Market Information System at esmis.nal.usda.gov. Reports are available electronically within minutes of release.

Subscribe to E-mail

The ESMIS NAL Library provides a free e-mail service for NASS reports. When a current report is released, a link to the report is sent via e-mail to the list of subscribers for that report. There are two options to subscribe to the National Reports; from the NASS Homepage at www.nass.usda.gov, select “**National**” located on the top right of the page under the social media icons, or in the “**Publications**” dropdown menu select “**National Reports**” under the section “**Receive Reports by E-mail**” in the right column. Follow the instructions on the next page to sign up and manage your subscriptions. **There is no charge for e-mail subscriptions.** You may “unsubscribe” at any time. **For assistance with e-mail delivery, please e-mail nass@usda.gov.**

Rich Site Summary (RSS) Alerts

RSS feeds are free content feeds from Web sites that contain article headlines, summaries and links back to full-text articles on the web. RSS uses XML technology to syndicate web content, sending it directly to your desktop, your web browser or a web-based RSS reader. Instead of visiting a specific Web site to search for new articles and features, RSS is a convenient way to alert you when content of interest appears on your favorite Web sites.

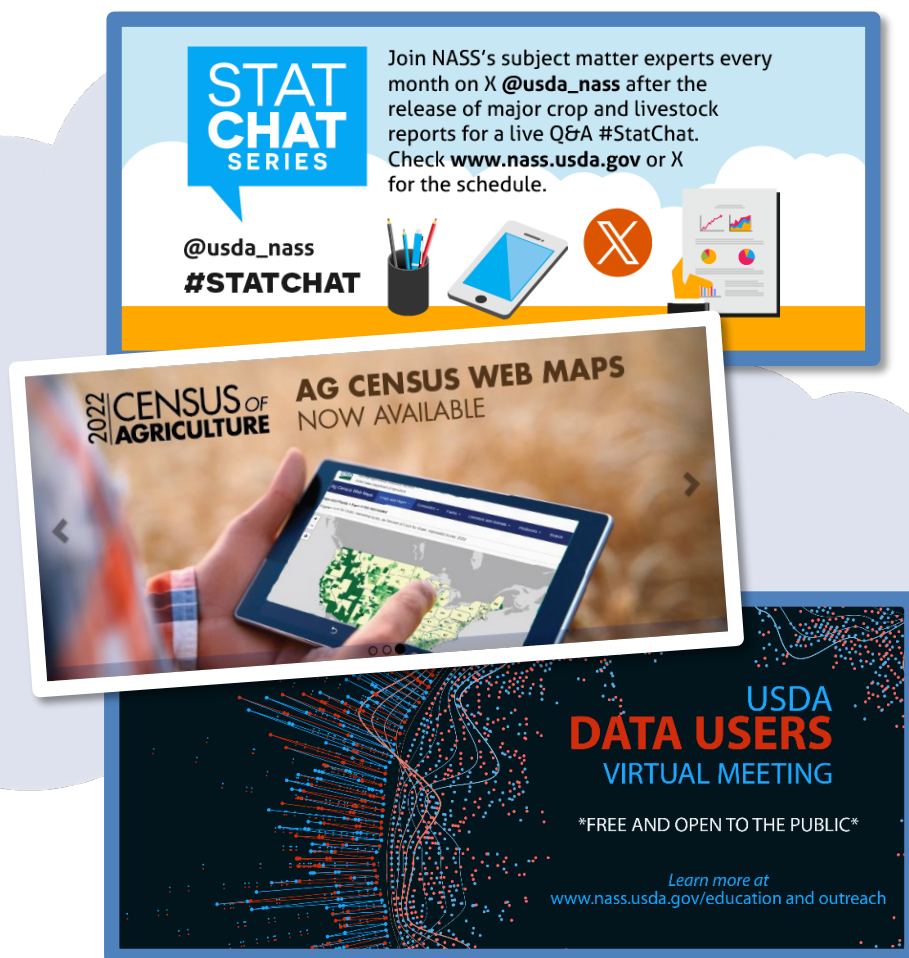
Currently NASS offers national feeds for its News and Coming Events, Today's Reports and Census of Agriculture. For more information visit: www.nass.usda.gov/Newsroom/Syndication.

The 5W's of NASS Data

NASS gathers facts and figures about the farms and people who feed our nation and the world. This experimental data tool uses data from the NASS Census of Agriculture and Agricultural Resource Management Survey to show how NASS information is published in academic and agriculture journals, and in turn, used by researchers, state and local farm organizations, and policymakers nationwide.

https://www.nass.usda.gov/Data_Visualization/5W/index.php





www.nass.usda.gov

National Agricultural Statistics Service
ATTN: Statistics Division
1400 Independence Avenue SW
Room 5400
Washington, DC 20250

In accordance with Federal civil rights law and U.S. Department of Agriculture (USDA) civil rights regulations and policies, the USDA, its Agencies, offices, and employees, and institutions participating in or administering USDA programs are prohibited from discriminating based on race, color, national origin, religion, sex, disability, age, marital status, family/parental status, income derived from a public assistance program, political beliefs, or reprisal or retaliation for prior civil rights activity, in any program or activity conducted or funded by USDA (not all bases apply to all programs). Remedies and complaint filing deadlines vary by program or incident.

Persons with disabilities who require alternative means of communication for program information (e.g., Braille, large print, audiotape, American Sign Language, etc.) should contact the responsible Agency or USDA's TARGET Center at (202) 720-2600 (voice and TTY) or contact USDA through the Federal Relay Service at (800) 877-8339. Additionally, program information may be made available in languages other than English.

To file a program discrimination complaint, complete the USDA Program Discrimination Complaint Form, AD-3027, found online at How to File a Program Discrimination Complaint and at any USDA office or write a letter addressed to USDA and provide in the letter all of the information requested in the form. To request a copy of the complaint form, call (866) 632-9992. Submit your completed form or letter to USDA by: (1) mail: U.S. Department of Agriculture, Office of the Assistant Secretary for Civil Rights, 1400 Independence Avenue, SW, Washington, D.C. 20250-9410; (2) fax: (202) 690-7442; or (3) email: program.intake@usda.gov.

USDA is an equal opportunity provider, employer, and lender