



May Crop Production

Agricultural Statistics Board Briefing

**Anthony Prillaman, Acting Chief
Crops Branch**

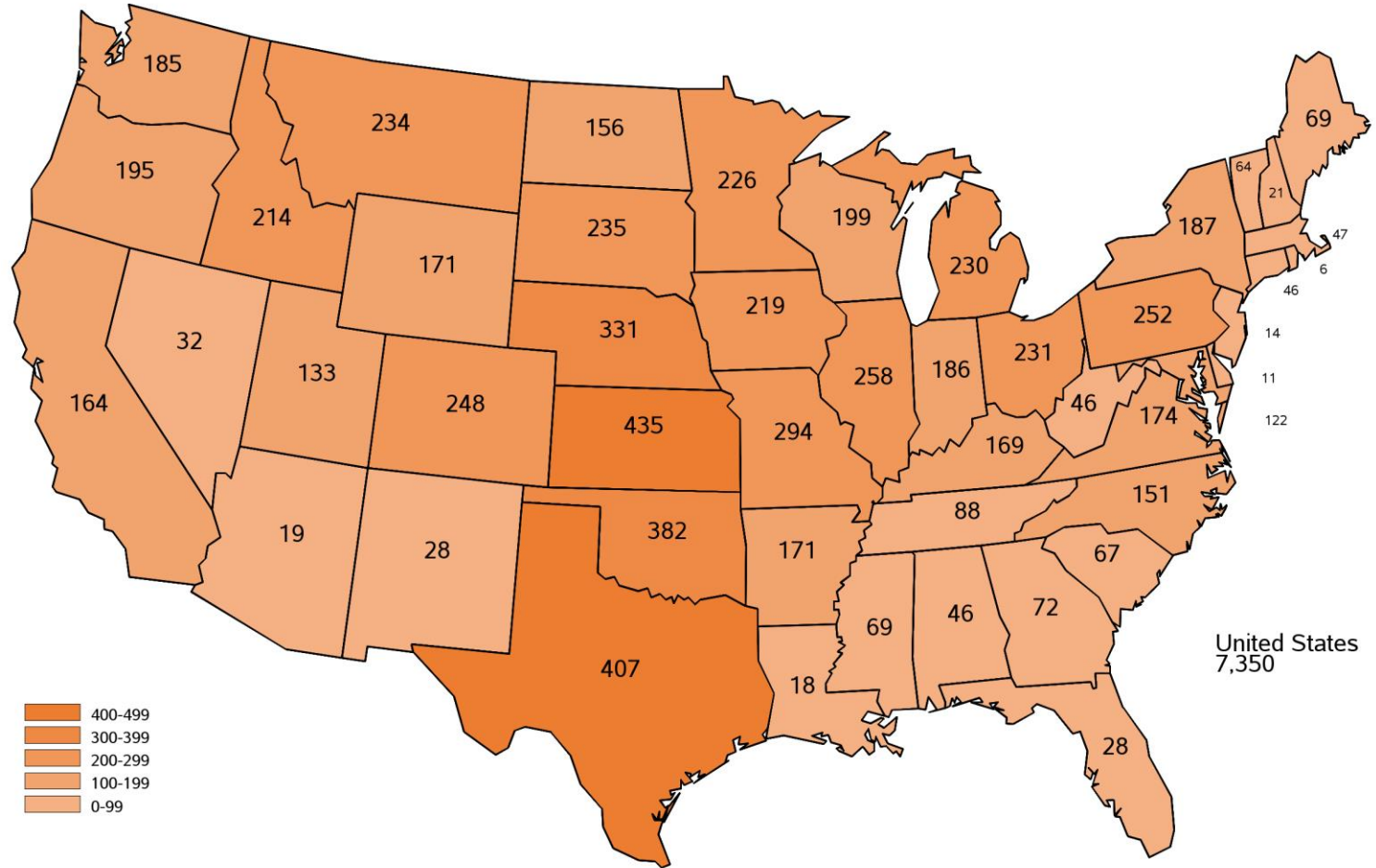
Data Sources

Winter Wheat and Hay Stocks

Operator Reported Survey	Ag Yield	Sample Size = 7,350	April 29 - May 7
Field Survey	Objective Yield	Sample Size = 257	April 24 - May 1

May 2026 Ag Yield Survey

Sample Sizes



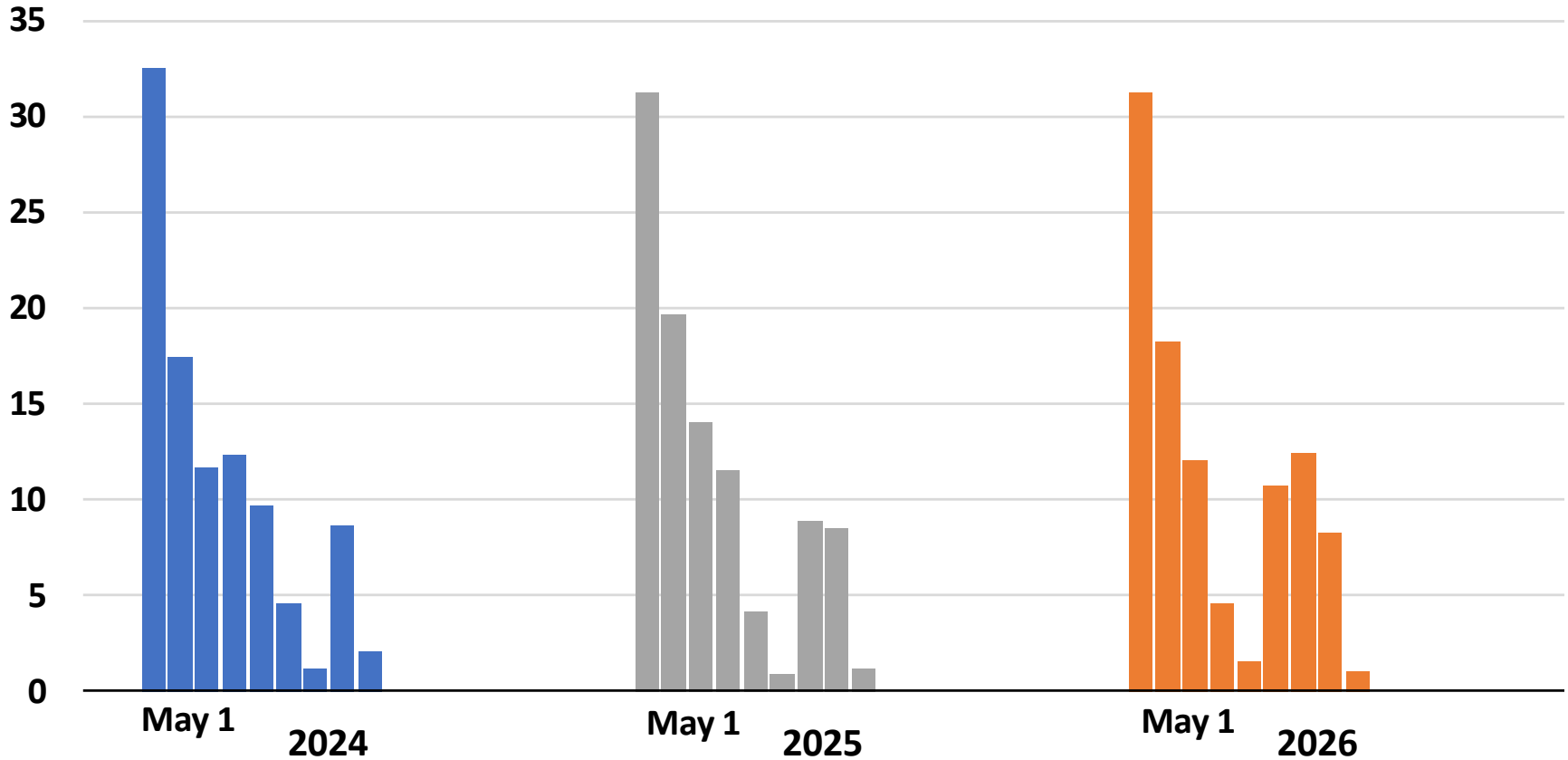


May 2026 Ag Yield Survey

Usable Responses by Day



Percent of Total

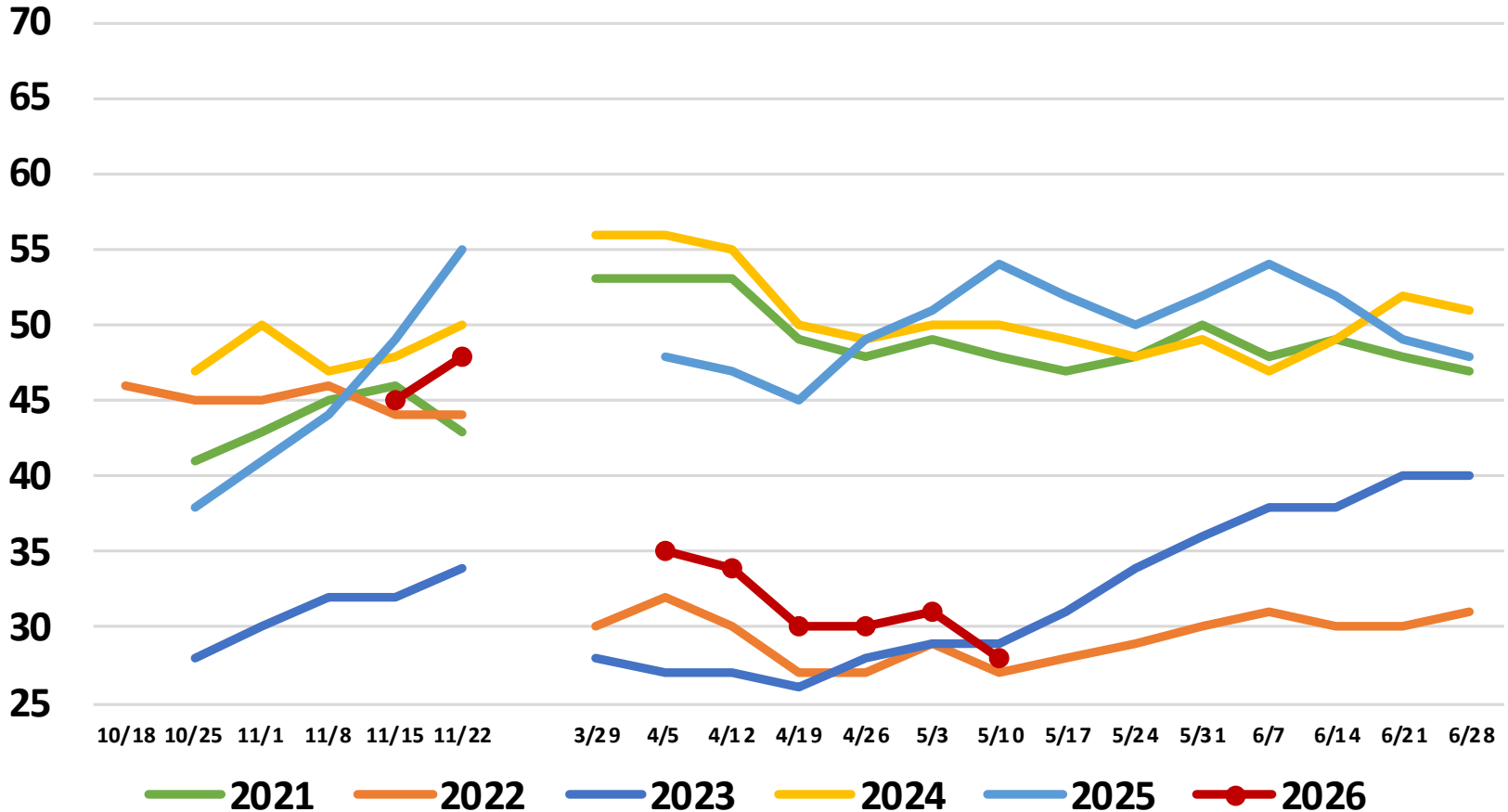




United States Winter Wheat Condition

Percent Rated Good to Excellent

Percent

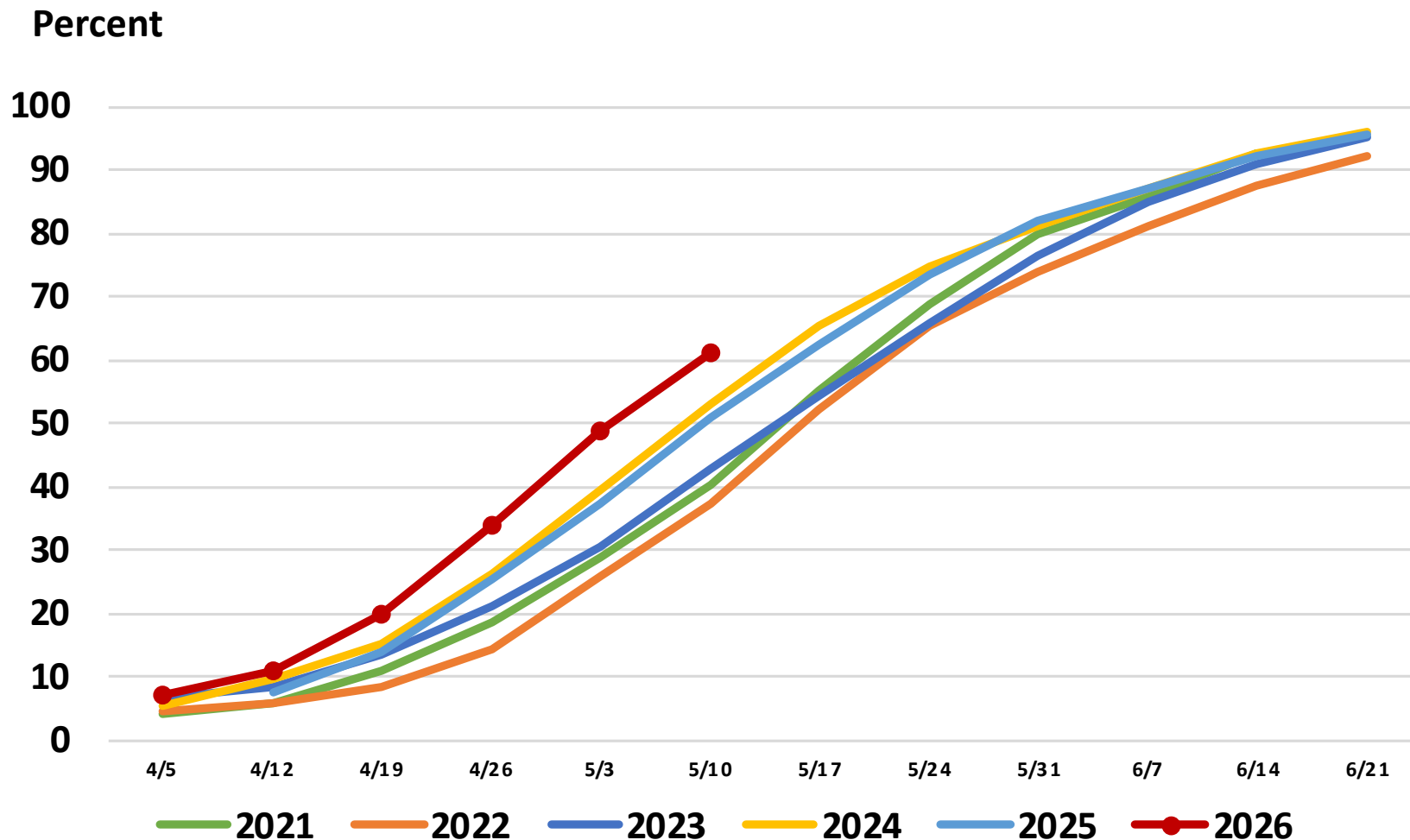


Note: Data for 10/5 through 11/9 not available for 2026 crop year

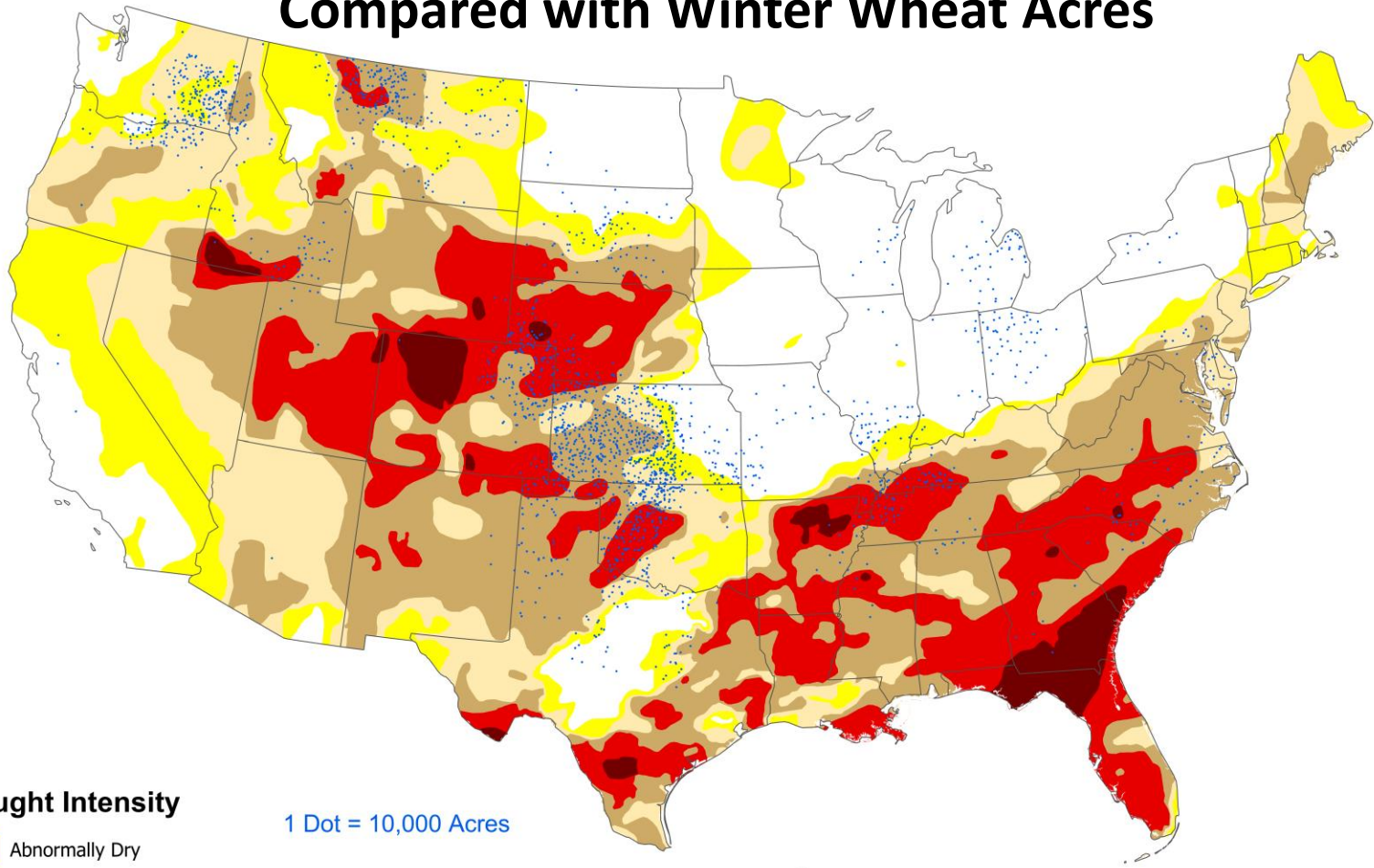


United States Winter Wheat Progress

Percent Headed



United States Drought Intensity for April 28, 2026 Compared with Winter Wheat Acres



Drought Intensity

- Abnormally Dry
- Drought - Moderate
- Drought - Severe
- Drought - Extreme
- Drought - Exceptional

1 Dot = 10,000 Acres

Sources:
2022 Census of Agriculture, USDA-NASS
The U.S. Drought Monitor is jointly produced by the National Drought Mitigation Center at the University of Nebraska-Lincoln, the United States Department of Agriculture, and the National Oceanic and Atmospheric Administration. Map courtesy of NDMC.



May 2026 Winter Wheat Acreage, Yield, and Production

	Planted (1,000 Acres)	Harvested (1,000 Acres)	Yield (Bushels/Acre)	Production (1,000 Bushels)
United States	32,410	22,015	47.6	1,047,510
% Change from Previous Estimate	NC	N/A	N/A	N/A
% Change from Previous Season	↓ 2.2	↓ 13.7	↓ 13.3	↓ 25.3

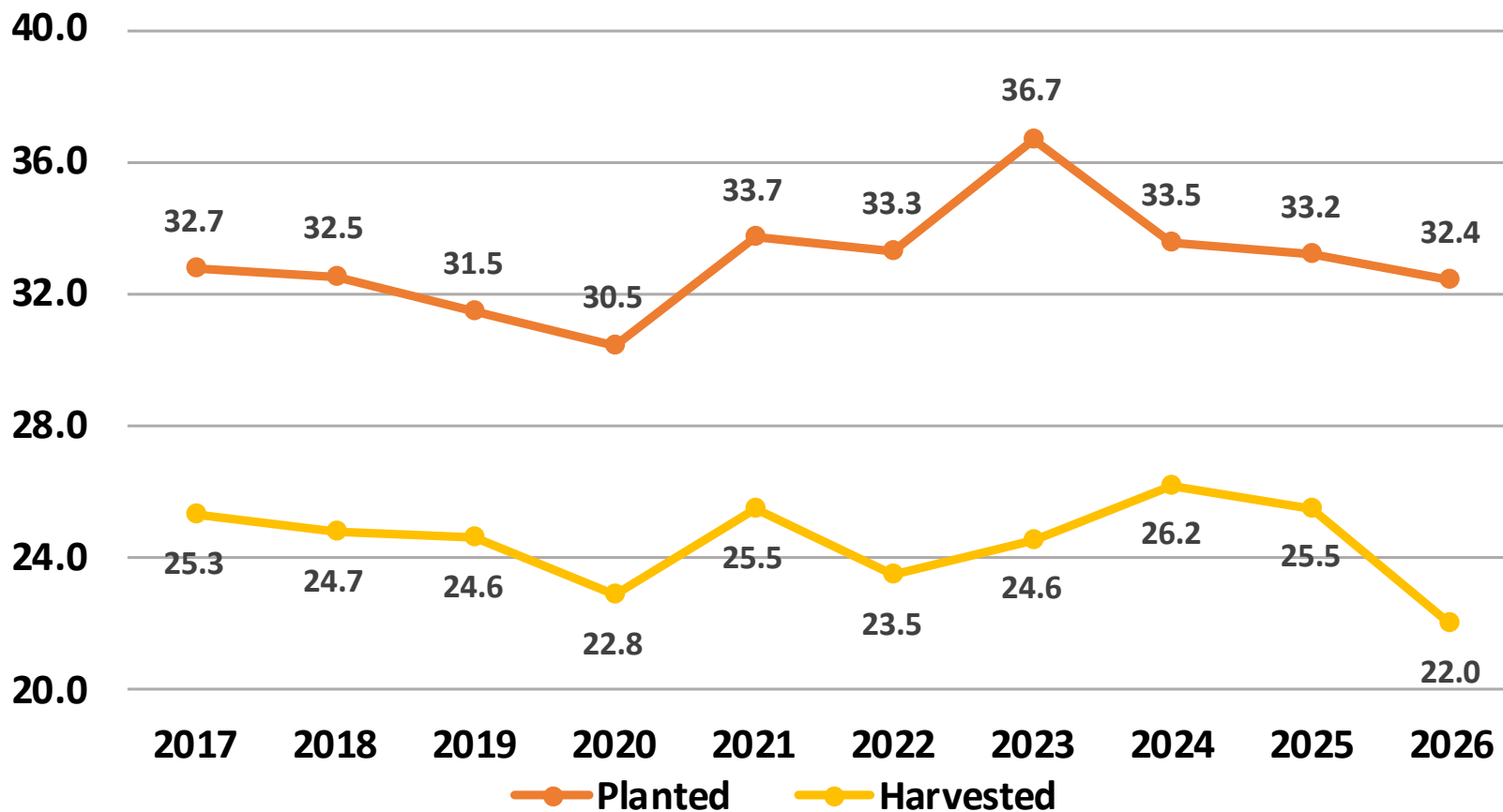
Top 5 States - By Production

	Planted		Harvested		Yield		Production	
	(1,000 Acres)	% Δ PY	(1,000 Acres)	% Δ PY	(Bushels/Acre)	% Δ PY	(1,000 Bushels)	% Δ PY
Kansas	7,000	↓ 4.1	5,800	↓ 14.7	37.0	↓ 27.5	214,600	↓ 38.1
Washington	1,850	NC	1,800	↑ 0.6	67.0	↓ 1.5	120,600	↓ 0.9
Montana	1,900	↓ 15.6	1,750	↓ 17.5	47.0	NC	82,250	↓ 17.5
Idaho	810	↑ 3.8	720	NC	97.0	↓ 2.0	69,840	↓ 2.0
Oklahoma	4,400	↑ 6.0	2,300	↓ 17.9	28.0	↓ 26.3	64,400	↓ 39.5

Winter Wheat Acres

United States

Million Acres



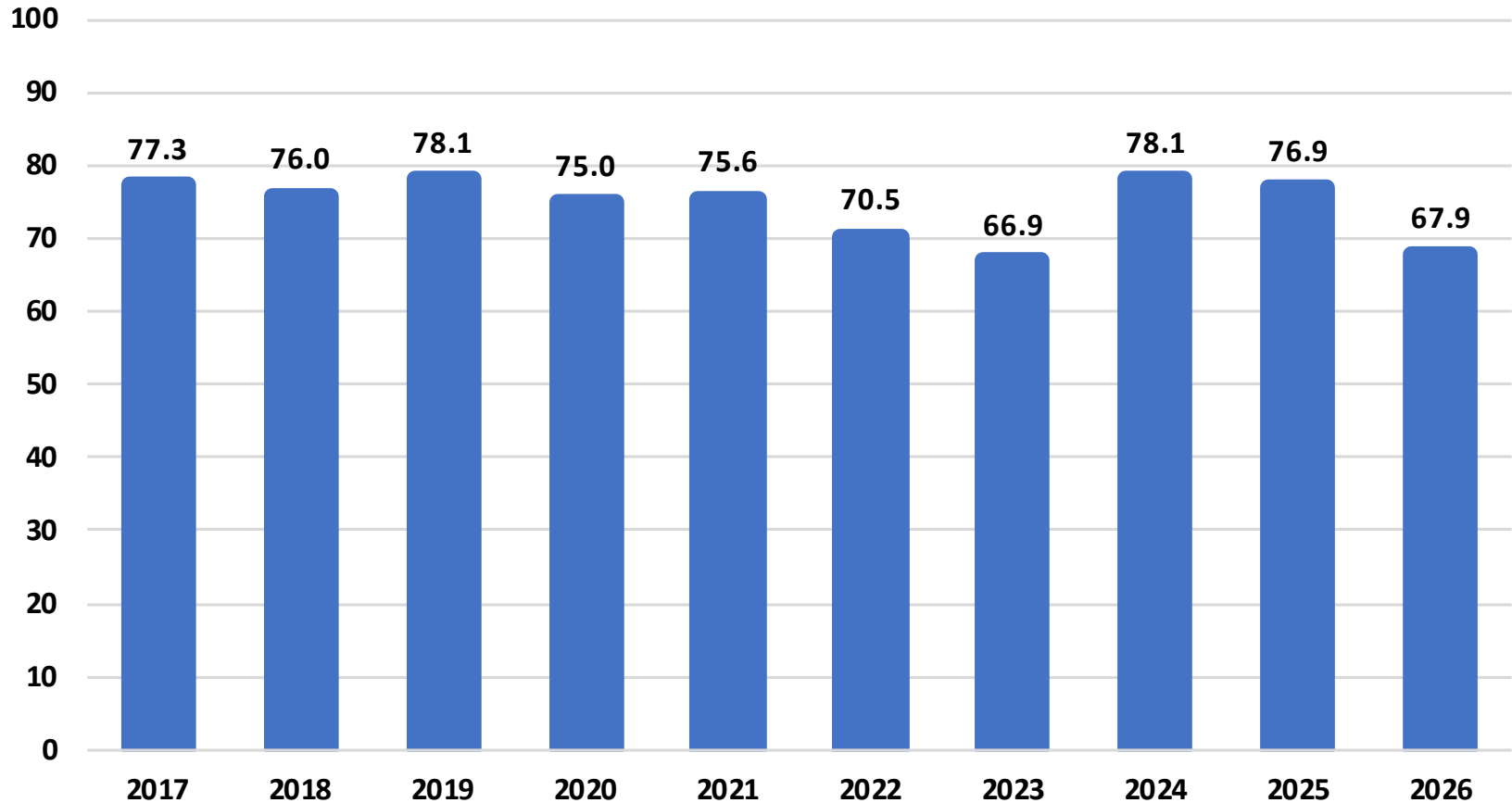


Winter Wheat Harvested-to-Planted Ratio

United States

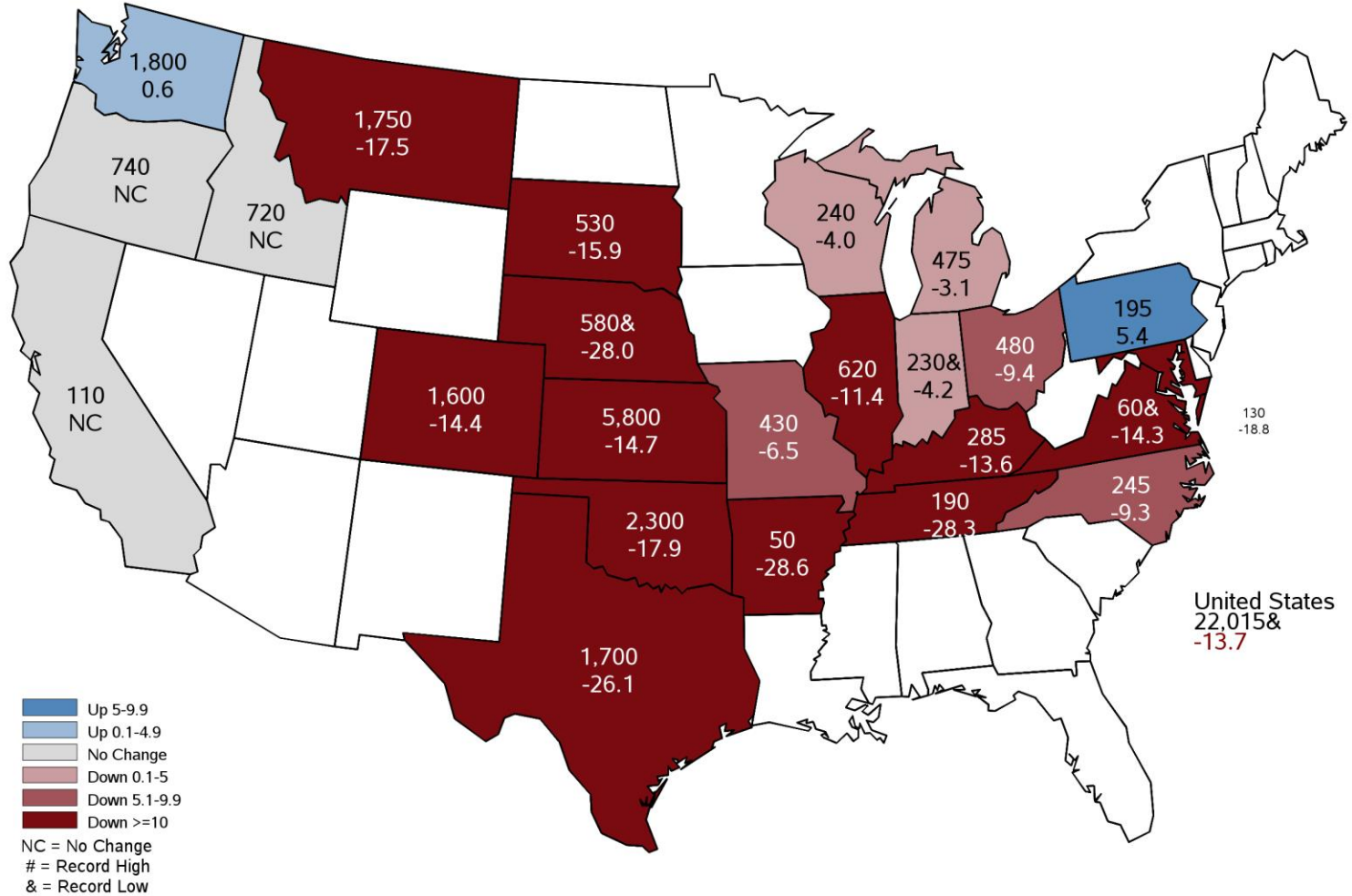


Percent



May 2026 Winter Wheat Harvested Acres

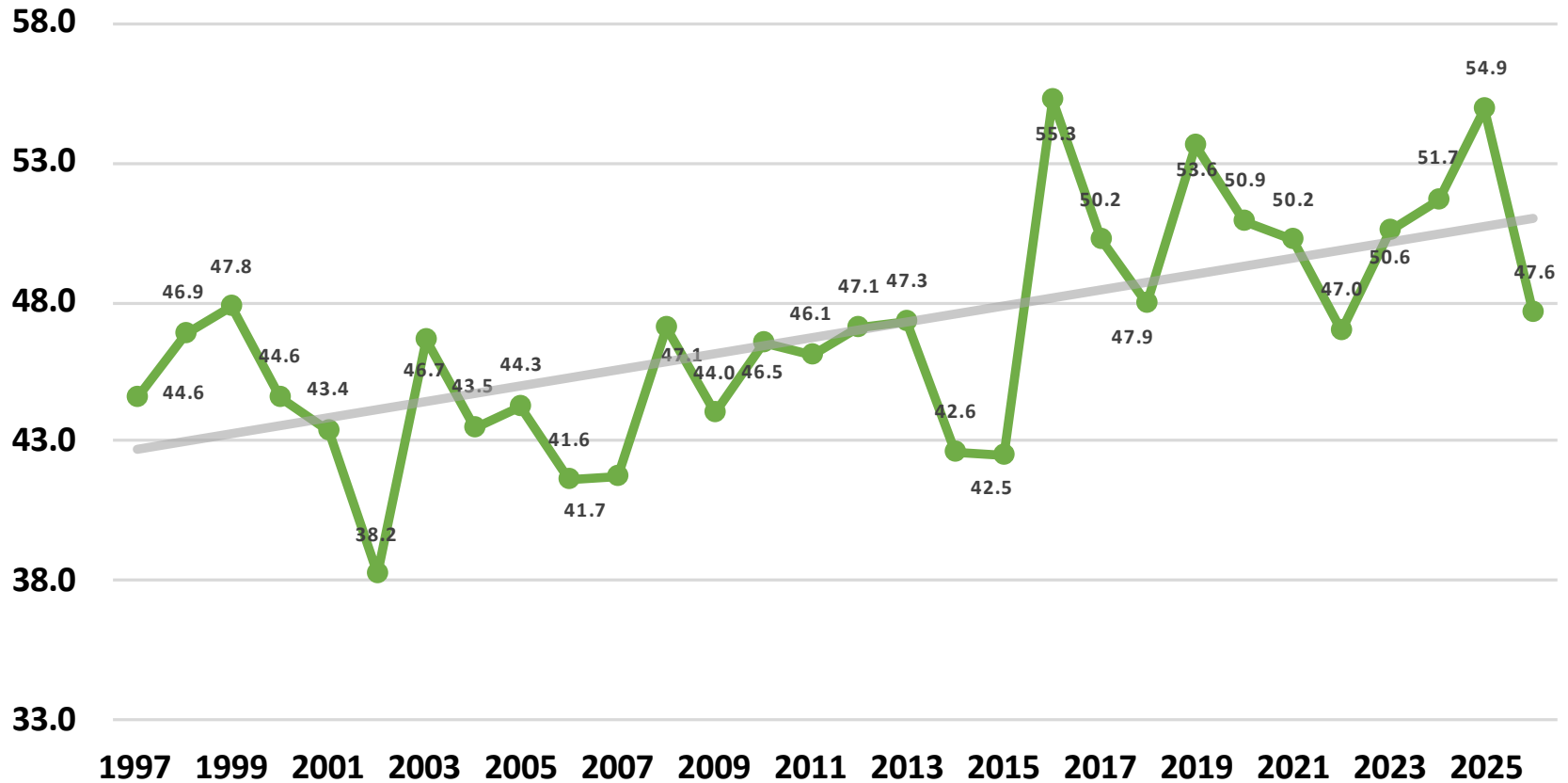
Thousand Acres and Percent Change from Previous Year



Winter Wheat Yield

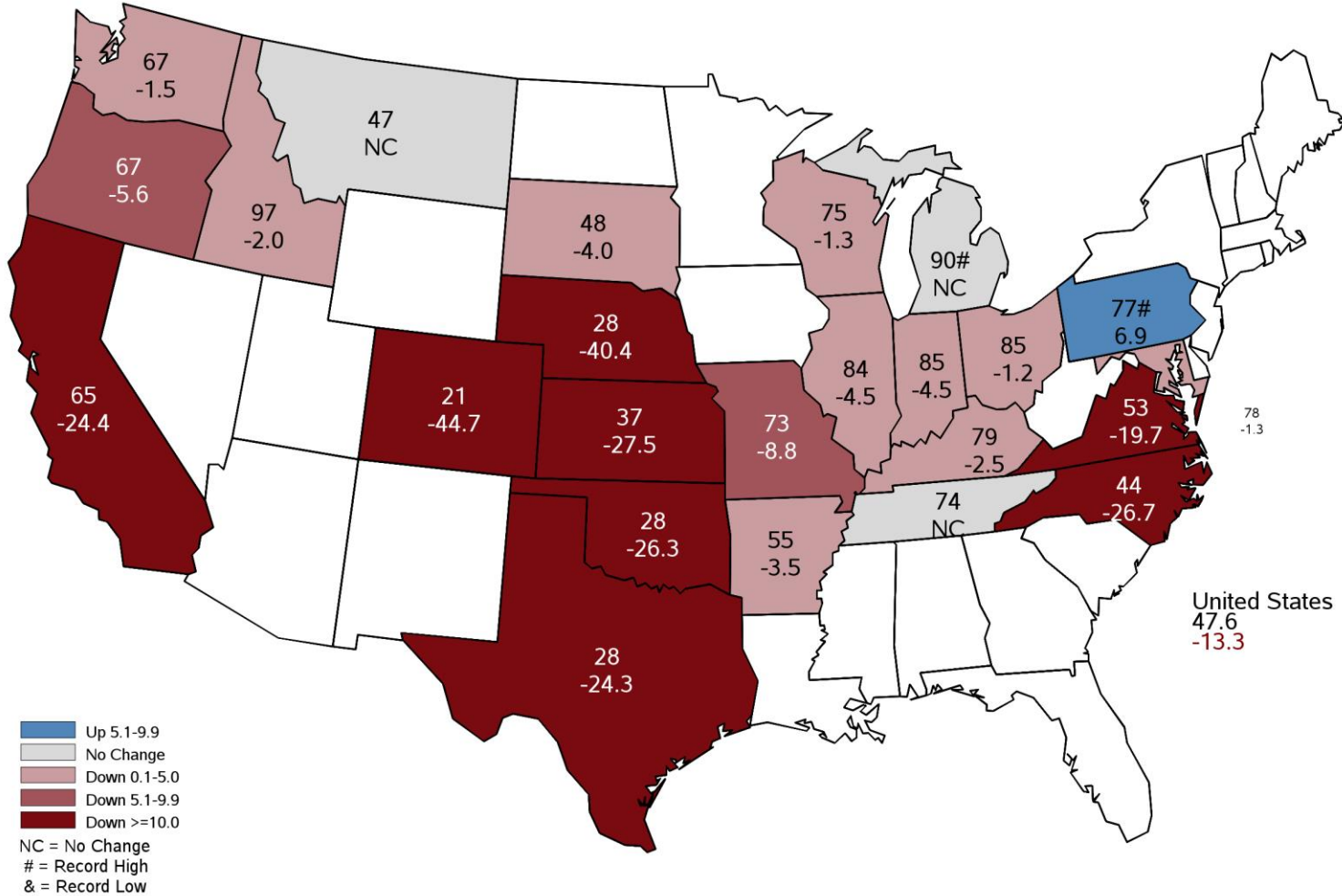
United States

Bushels per Acre



May 2026 Winter Wheat Yield

Bushels and Percent Change from Previous Year

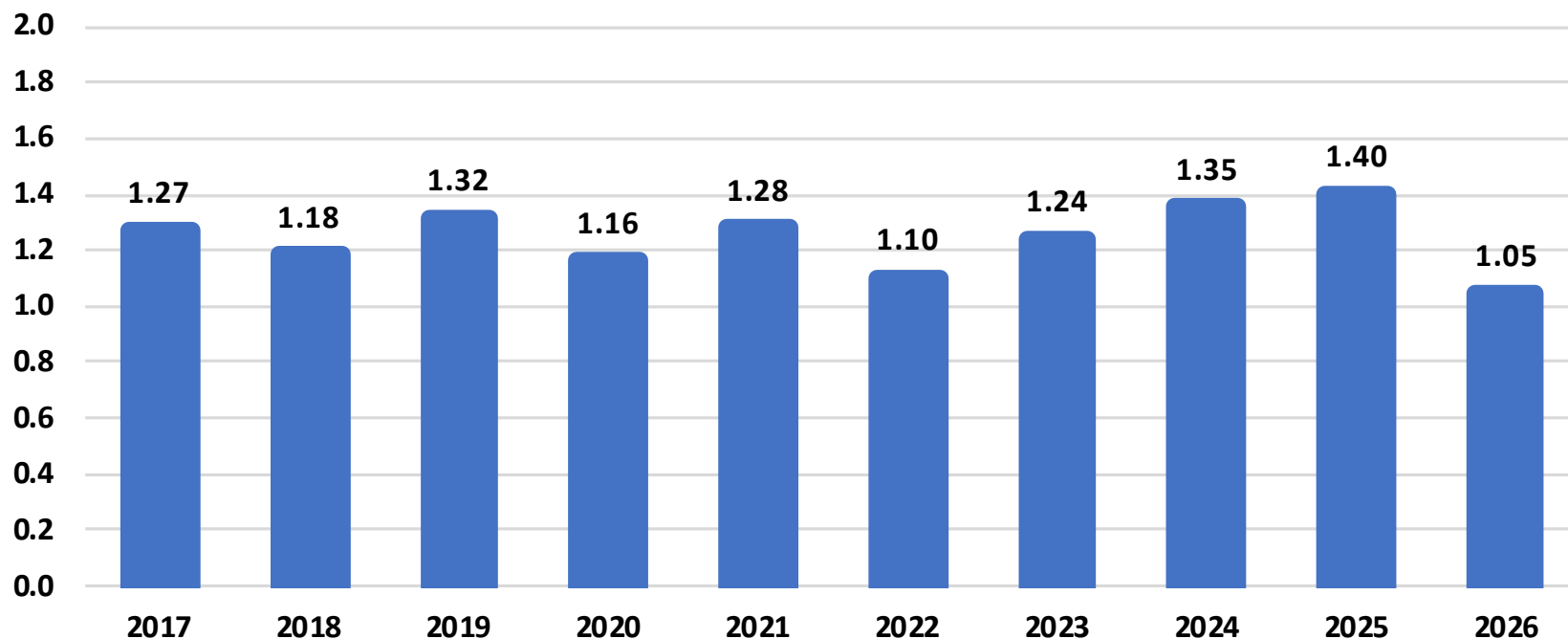




Winter Wheat Production

United States

Billion Bushels





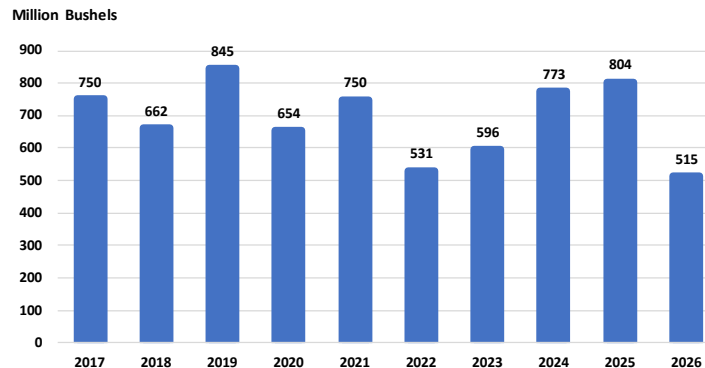
May 2026 Winter Wheat Production

United States by Class

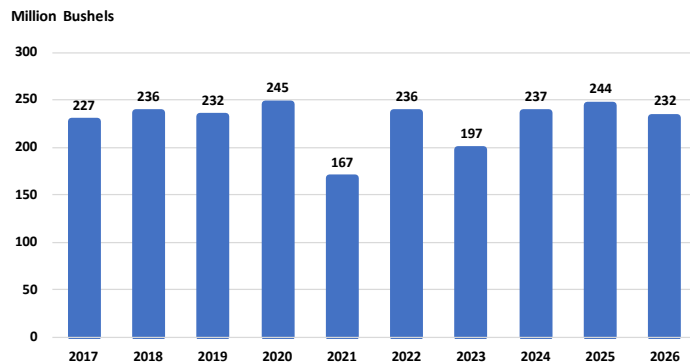


	Production (1,000 Units)	Unit
Hard Red Winter Wheat	514,779	Bu
% Change from Previous Estimate	N/A	
% Change from Previous Season	↓ 36.0	
Soft Red Winter Wheat	300,862	Bu
% Change from Previous Estimate	N/A	
% Change from Previous Season	↓ 14.7	
White Winter Wheat	231,869	Bu
% Change from Previous Estimate	N/A	
% Change from Previous Season	↓ 5.0	

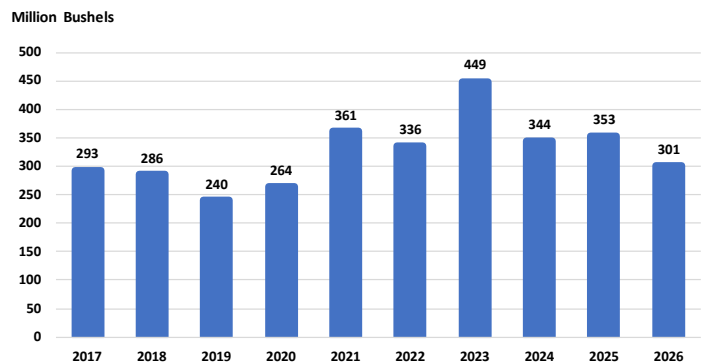
Hard Red Winter Wheat Production
United States



White Winter Wheat Production
United States



Soft Red Winter Wheat Production
United States

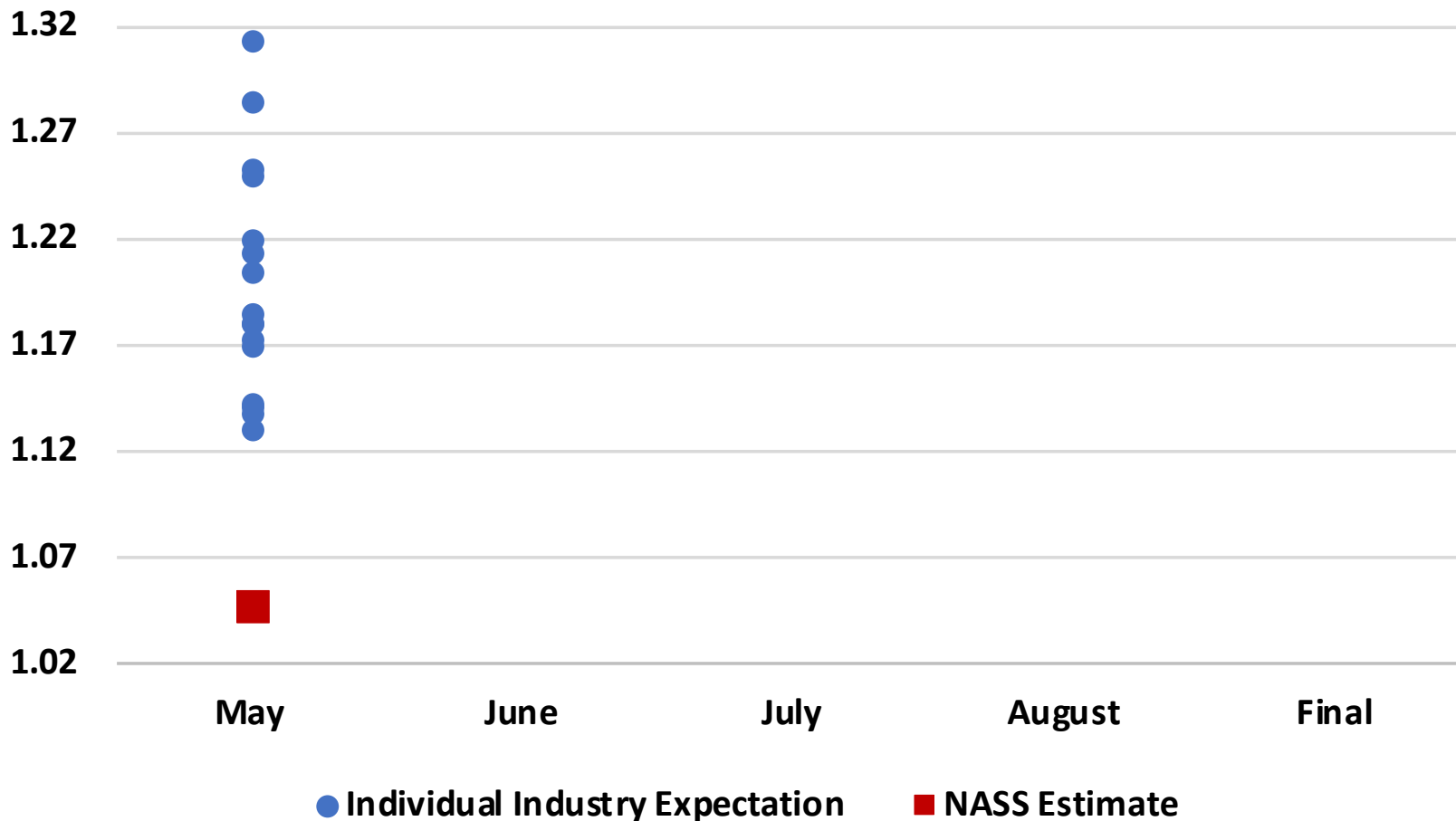




2026 U.S. Winter Wheat Production

Industry Expectations vs NASS

Billion Bushels





May 2026 Hay Stocks

**May 1
Total**

(1,000 Tons)

United States

23,287

% Change from
Previous Season

↓ 3.3

Top 5 States

**May 1
Total**

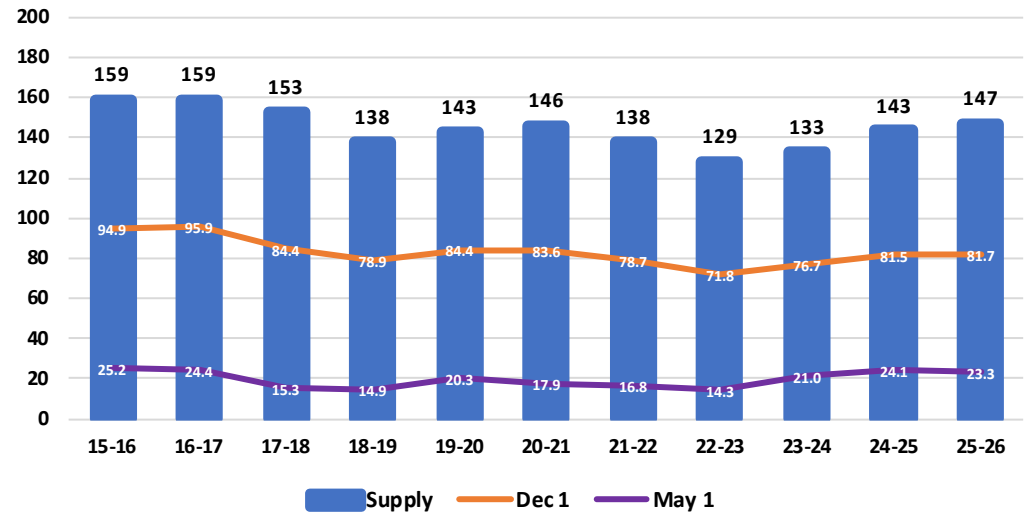
(1,000 Tons)

% Δ PY

Texas	2,000	↓	33.3
South Dakota	1,950	↓	12.9
Missouri	1,650	↑	10.0
Oklahoma	1,650	↑	37.5
Nebraska	1,550	↓	11.4

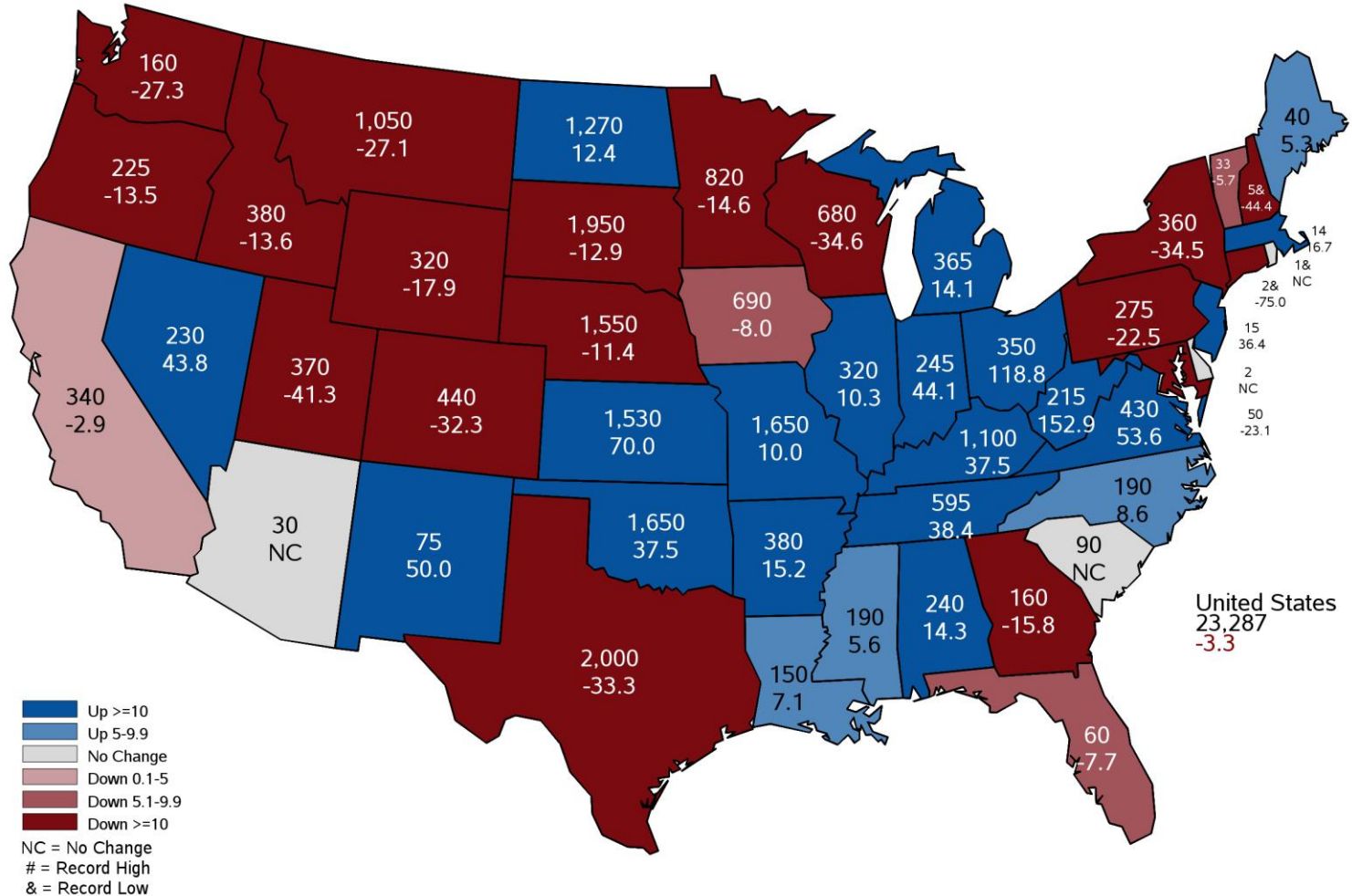
**May 2026 Hay Stocks
United States**

Million Tons



May 2026 Hay Stocks

Thousand Tons and Percent Change from Previous Year

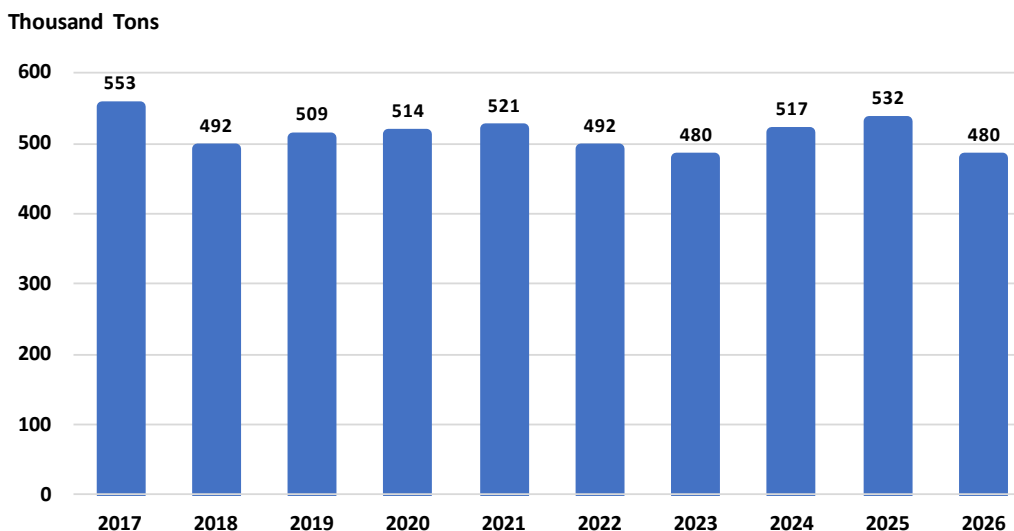




May 2026 Noncitrus Fruit Production

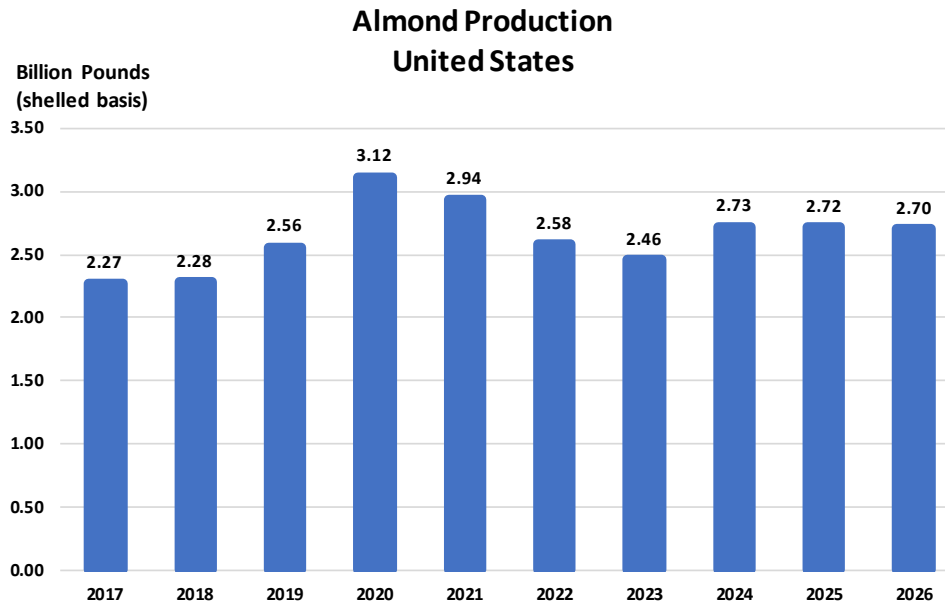
	Production (1,000 Units)	Unit
Peaches (CA Only)	480	Ton
% Change from Previous Estimate	N/A	
% Change from Previous Season	↓ 9.8	

Peach Production
California



May 2026 Tree Nut Acreage, Yield, and Production

	Bearing (1,000 Acres)	Yield (Units per Acre)	Unit	Production (1,000 Units)	Unit
Almonds	1,390	1,940	Lb	2,700,000	Lb
% Change from Previous Estimate	N/A	N/A		N/A	
% Change from Previous Season	↓ 0.7	NC		↓ 0.6	





2025 All Cotton

Acreage, Yield, and Production

	Planted (1,000 Acres)	Harvested (1,000 Acres)	Yield (Pounds/Acre)	Production (1,000 Bales)
United States	9,283	7,827	852	13,897
% Change from Previous Estimate	NC	↑ 0.3	↓ 0.5	↓ 0.2
% Change from Previous Season	↓ 17.0	↑ 0.9	↓ 4.5	↓ 3.6

Top 5 States - By Production											
	Planted		Harvested		Yield		Production				
	(1,000 Acres)	% Δ PY	(1,000 Acres)	% Δ PY	(Pounds/Acre)	% Δ PY	(1,000 Bales)	% Δ PY			
Texas	5,321	↓ 11.1	4,019	↑ 37.2	629.0	↓ 6.0	5,265	↑ 29.0			
Georgia	835	↓ 24.1	825	↓ 23.6	1,033.0	↑ 20.4	1,775	↓ 8.0			
Arkansas	520	↓ 20.0	515	↓ 19.5	1,239.0	↓ 7.6	1,329	↓ 25.7			
Mississippi	330	↓ 36.5	325	↓ 36.9	1,167.0	↑ 0.9	790	↓ 36.3			
Missouri	355	↓ 11.3	340	↓ 10.5	1,084.0	↓ 17.9	768	↓ 26.5			



Selected Upcoming Reports



May 12	Cattle and Sheep County Estimates Cotton County Estimates
May 22	Cattle on Feed Rice and Peanuts County Estimates
May 29	Agricultural Prices
June 1	Cotton System Fats & Oils Grain Crushings
June 11	Crop Production
June 25	Hogs and Pigs
June 30	Acreage Grain Stocks Rice Stocks

<https://www.nass.usda.gov/Publications/index.php>

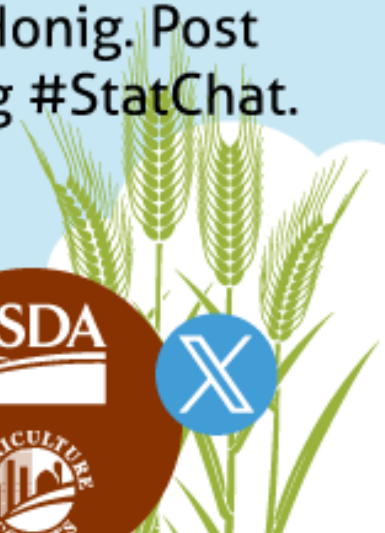
**STAT
CHAT
SERIES**

Join @usda_nass on X to discuss the **Crop Production** report with NASS Agricultural Statistics Board Chair, Lance Honig. Post questions ahead of time using #StatChat.

**@usda_nass
#STATCHAT**



**TUES
MAY 12
1:30PM ET**





All Reports Available At

www.nass.usda.gov

For Questions

(202) 720-2127

(800) 727-9540

nass@usda.gov