



Small Grains Summary

Grain Stocks

Agricultural Statistics Board Briefing

Anthony Prillaman, Acting Chief
Crops Branch



Special Note



The marketing year for corn and soybeans is finished and a thorough review of the balance sheet was completed. This process, which is normal for this time of the year, led to revisions in acreage, yield, and production for the 2024 crop.

Nationally, corn production for 2024 is revised up 25.0 million bushels and soybean production is revised up 7.74 million bushels from the previous estimate.

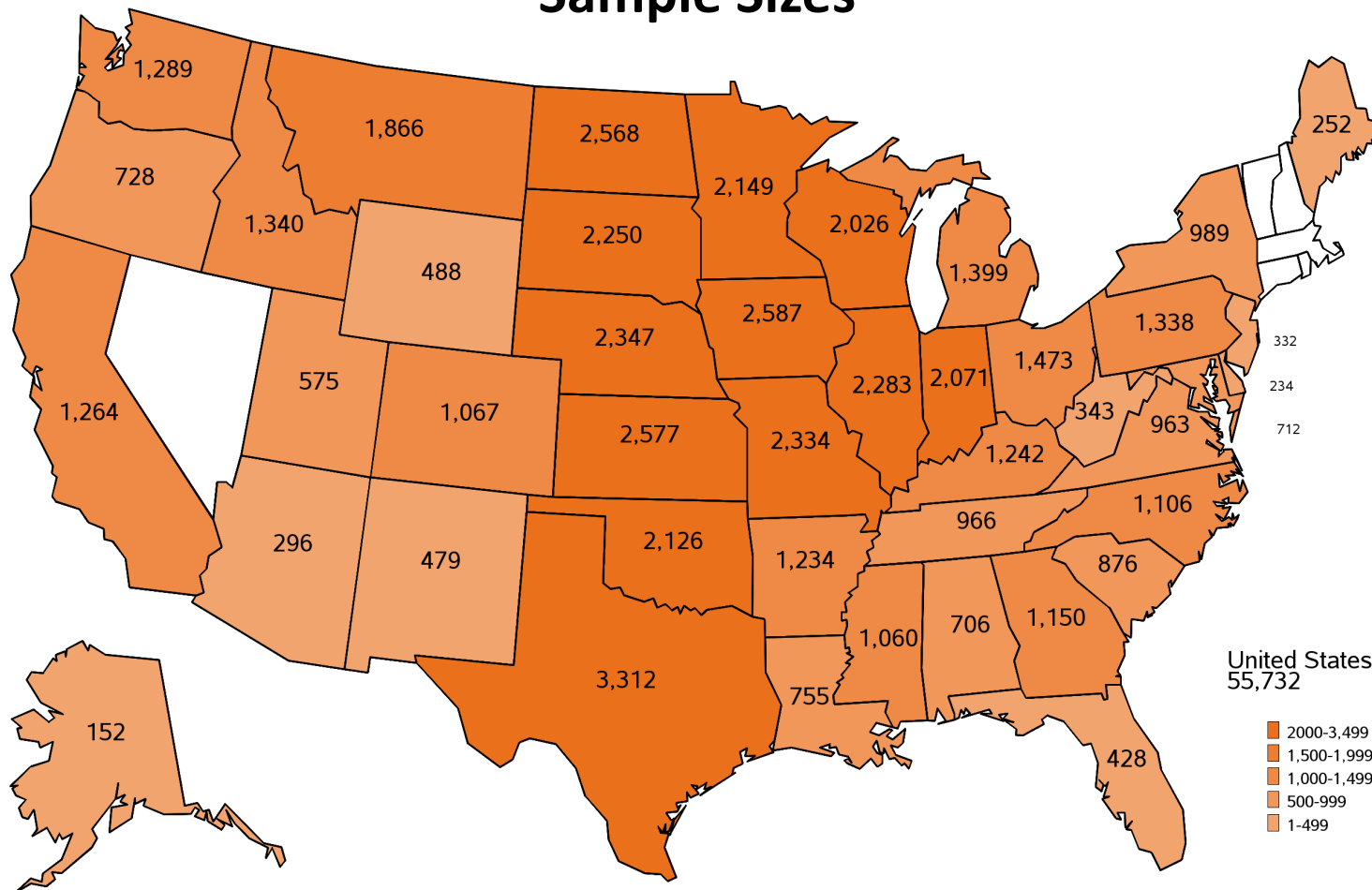


Data Sources

Operator Reported Surveys	September Ag Survey	Sample Size = 55,732	August 30 - September 16
	Off-Farm Grain Stocks	~7,900 Facilities	August 31 - September 18
Field Survey	Objective Yield Winter Wheat	Sample Size = 1,155	Prior to Harvest
FSA Certified Acres	Farm Service Agency policy requires that producers participating in several programs submit an annual report regarding all cropland use on their farms.		
FSA and RMA Failed Acres	Acres reported as "failed" to either the Farm Service Agency (FSA) or the Risk Management Agency (RMA) are considered minimum levels of abandonment.		

September 2025 Ag Survey

Sample Sizes





2025 Winter Wheat

Acreage, Yield, and Production

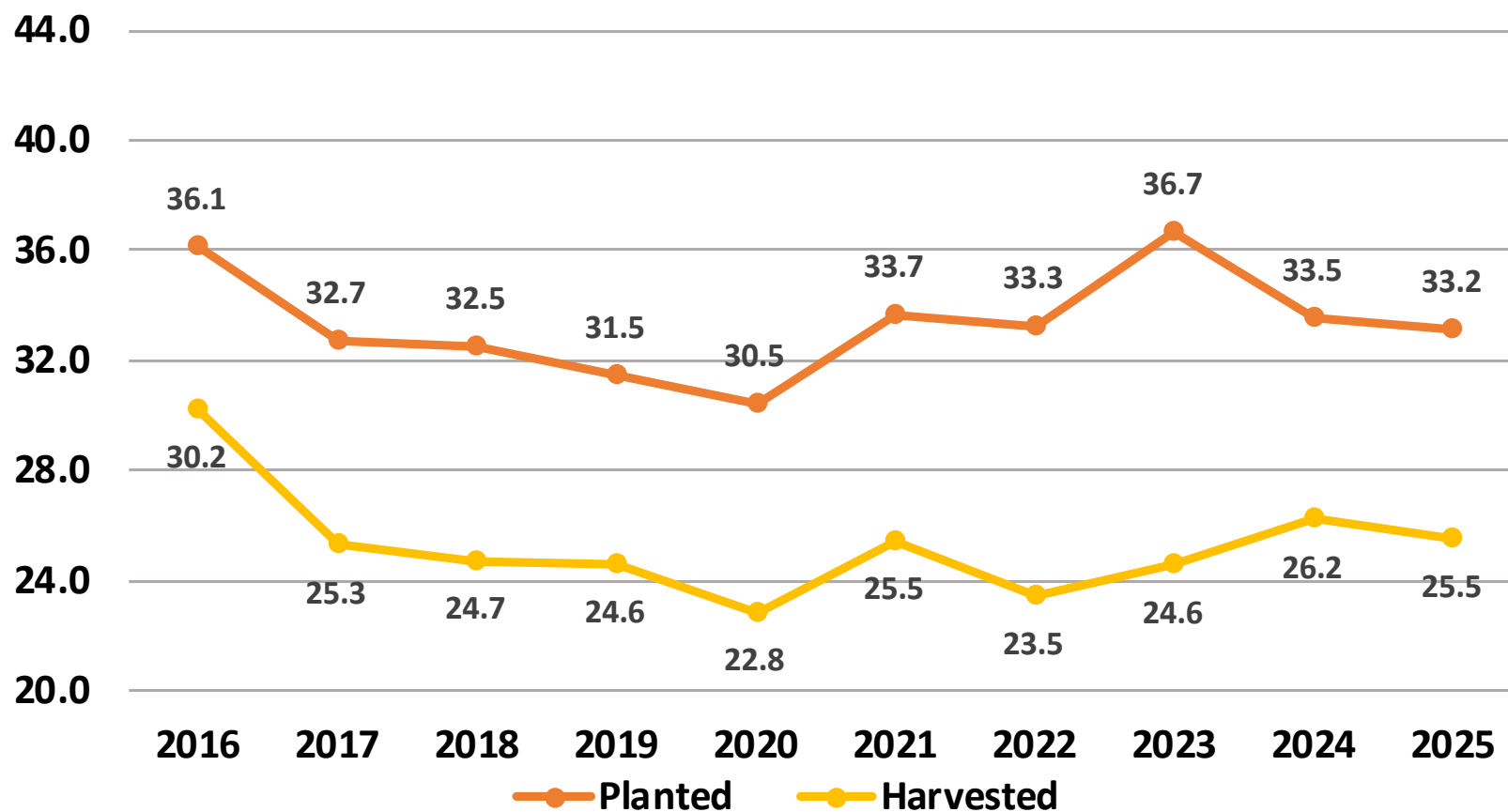
	Planted (1,000 Acres)	Harvested (1,000 Acres)	Yield (Bushels/Acre)	Production (1,000 Bushels)
United States	33,153	25,508	54.9	1,401,554
% Change from Previous Estimate	↓ 0.2	↑ 3.1	↑ 0.2	↑ 3.4
% Change from Previous Season	↓ 1.1	↓ 2.7	↑ 6.2	↑ 3.5

Top 5 States - By Production										
	Planted (1,000 Acres)		Harvested (1,000 Acres)		Yield (Bushels/Acre)		Production (1,000 Bushels)			
		% Δ PY		% Δ PY		% Δ PY		% Δ PY		% Δ PY
Kansas	7,300	↓ 3.9	6,800	↓ 4.9	51.0	↑ 18.6	346,800	↑ 12.8		
Washington	1,850	↑ 2.8	1,790	↑ 2.3	68.0	↓ 2.9	121,720	↓ 0.6		
Oklahoma	4,150	↓ 5.7	2,800	↓ 3.4	38.0	NC	106,400	↓ 3.4		
Montana	2,250	↑ 15.4	2,120	↑ 15.8	47.0	↓ 6.0	99,640	↑ 8.9		
Texas	5,500	NC	2,300	↓ 11.5	37.0	↑ 19.4	85,100	↑ 5.6		

Winter Wheat Acres

United States

Million Acres

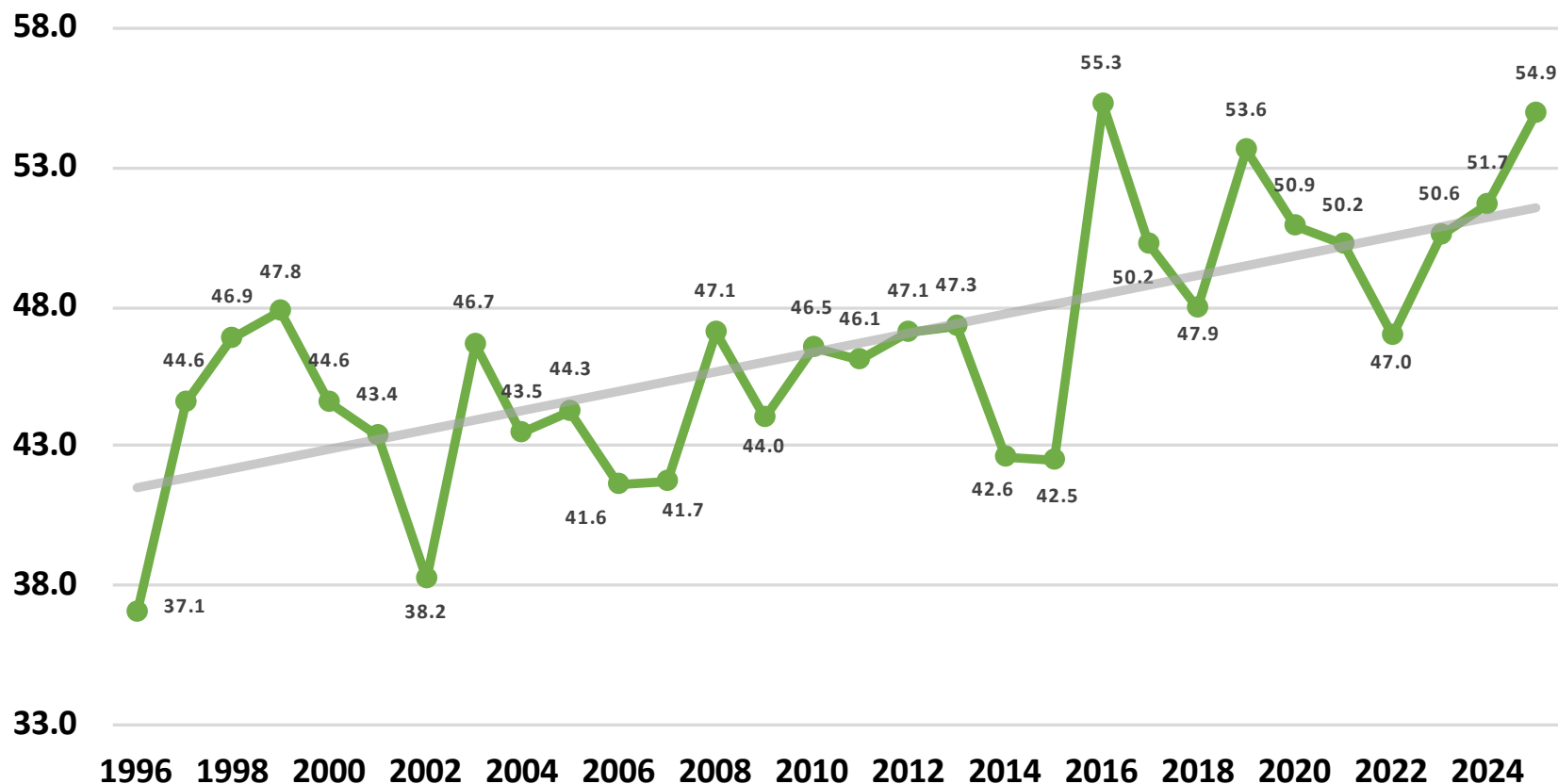




Winter Wheat Yield

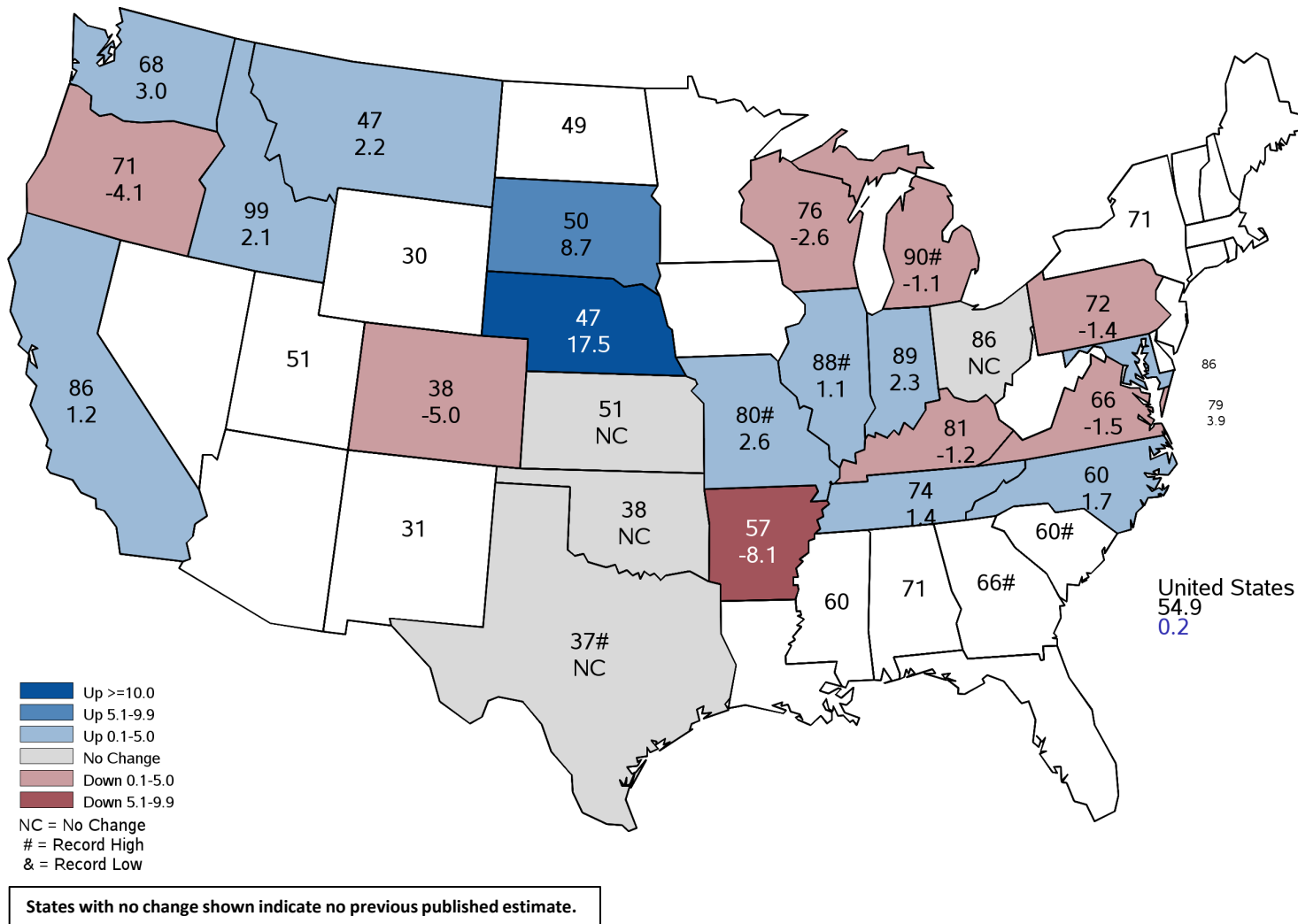
United States

Bushels per Acre



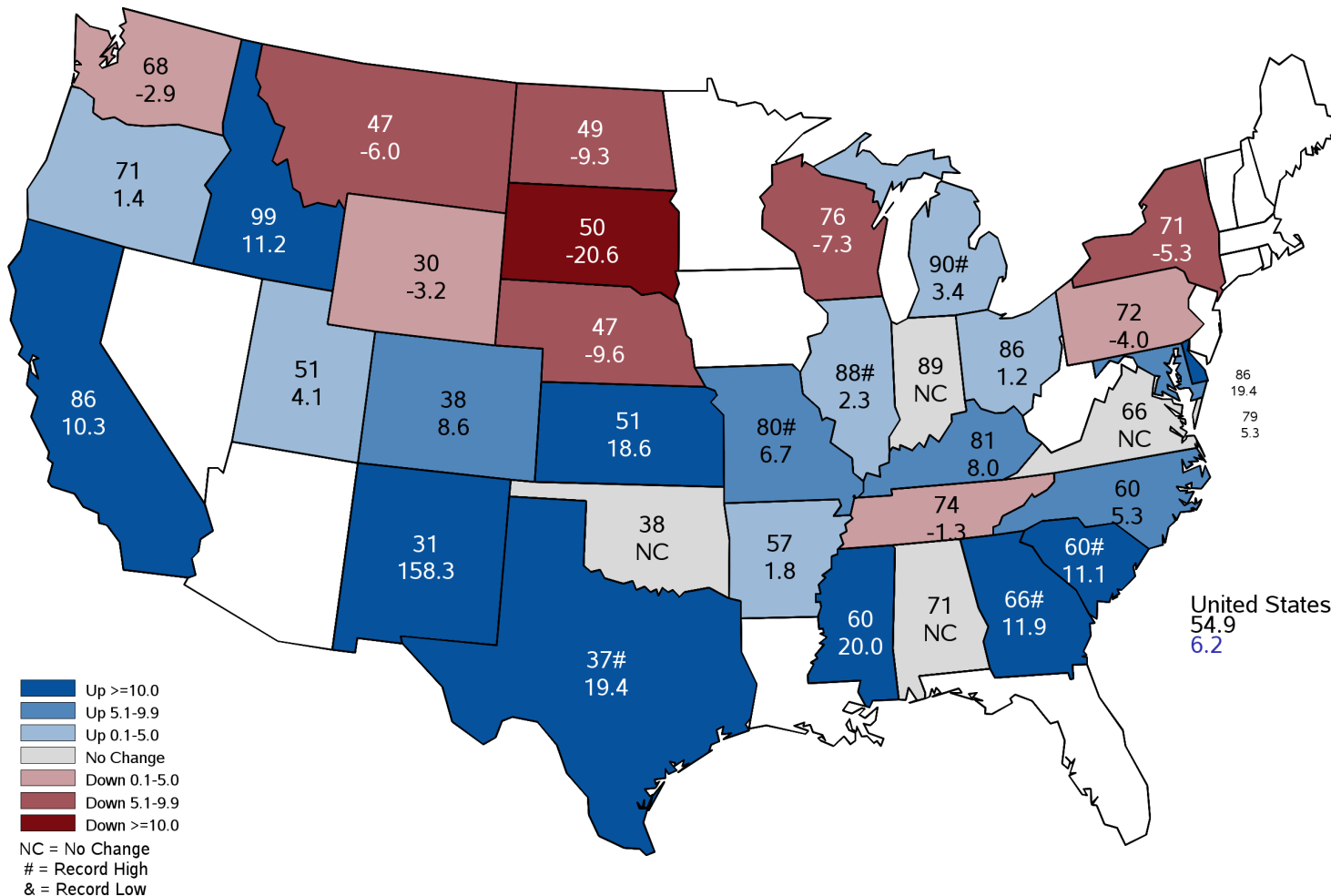
2025 Winter Wheat Yield

Bushels and Percent Change from Previous Estimate



2025 Winter Wheat Yield

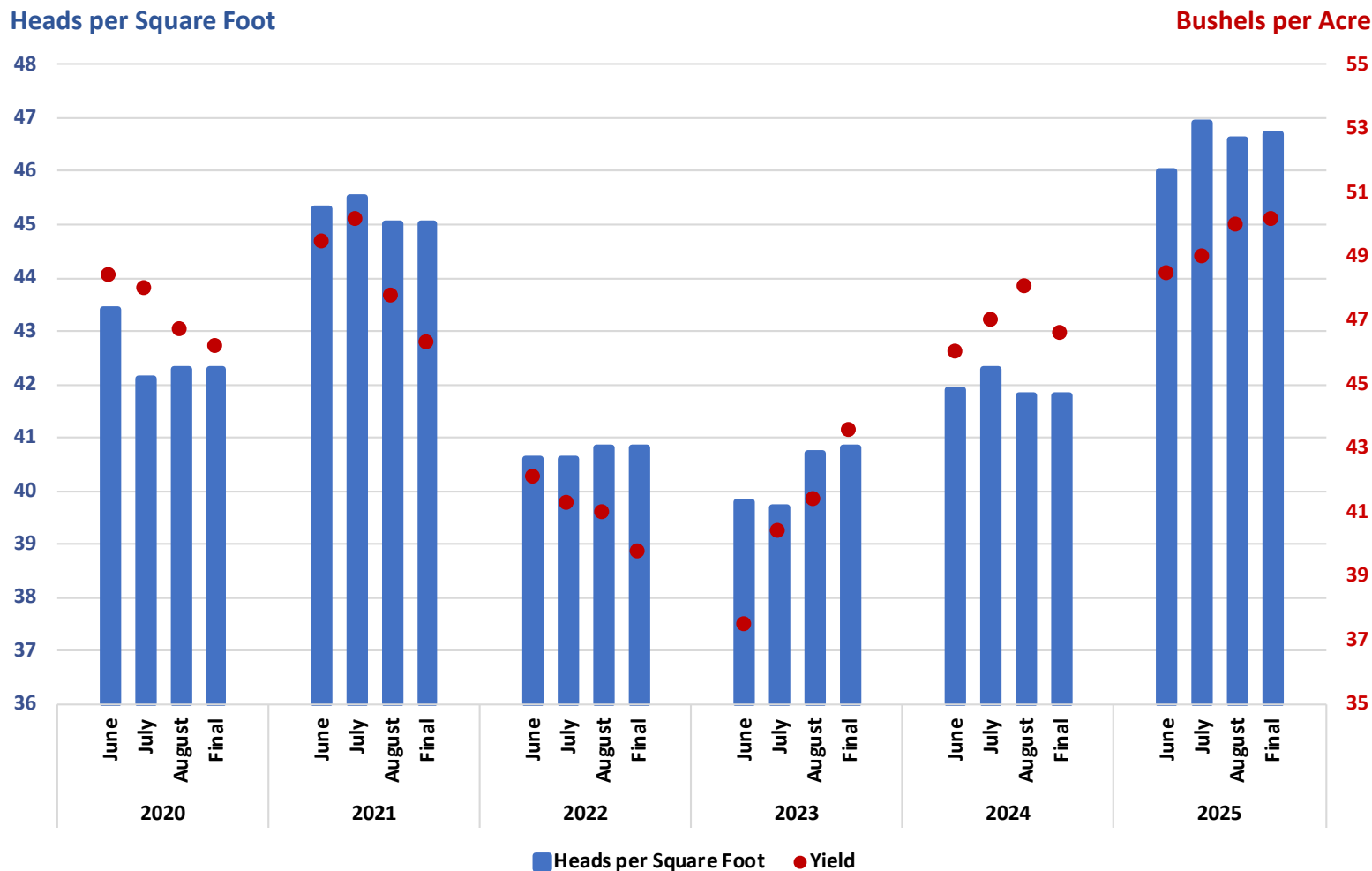
Bushels and Percent Change from Previous Year





2025 Winter Wheat Objective Yield

Heads per Square Foot and Yield for 10 State Region

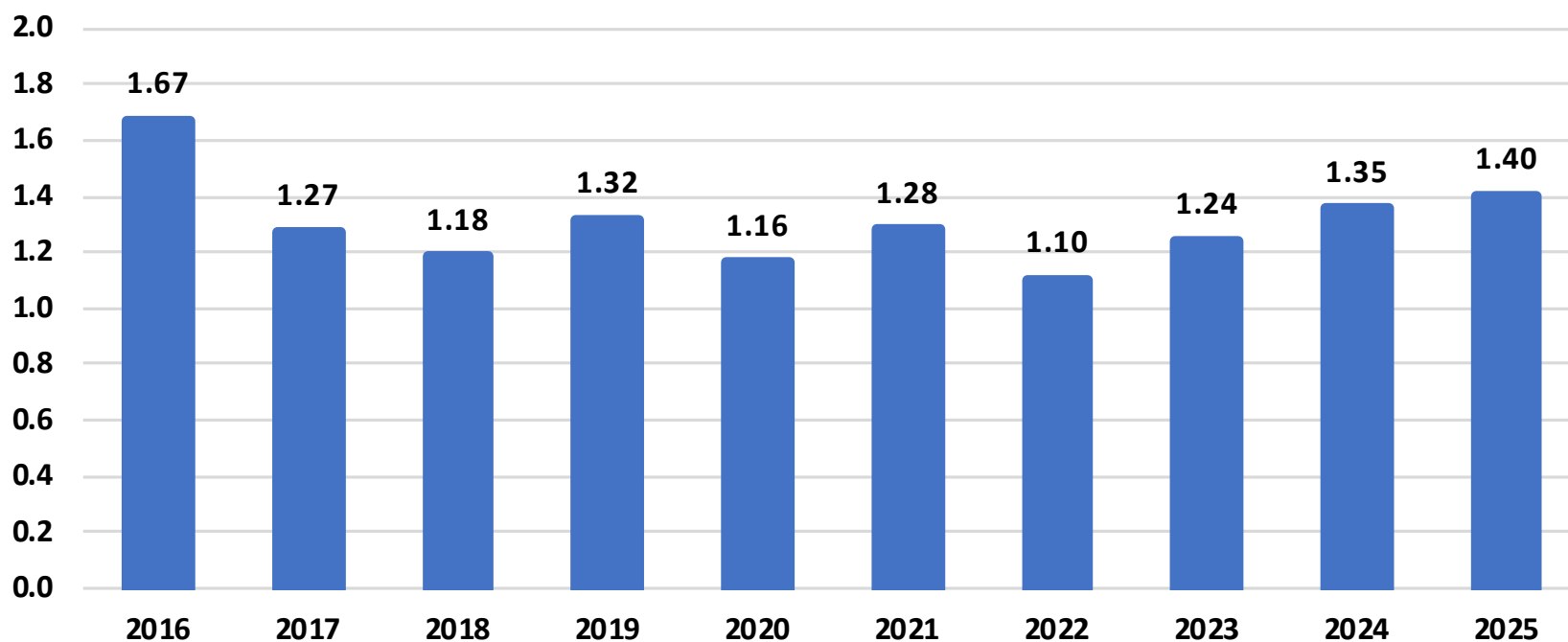




Winter Wheat Production

United States

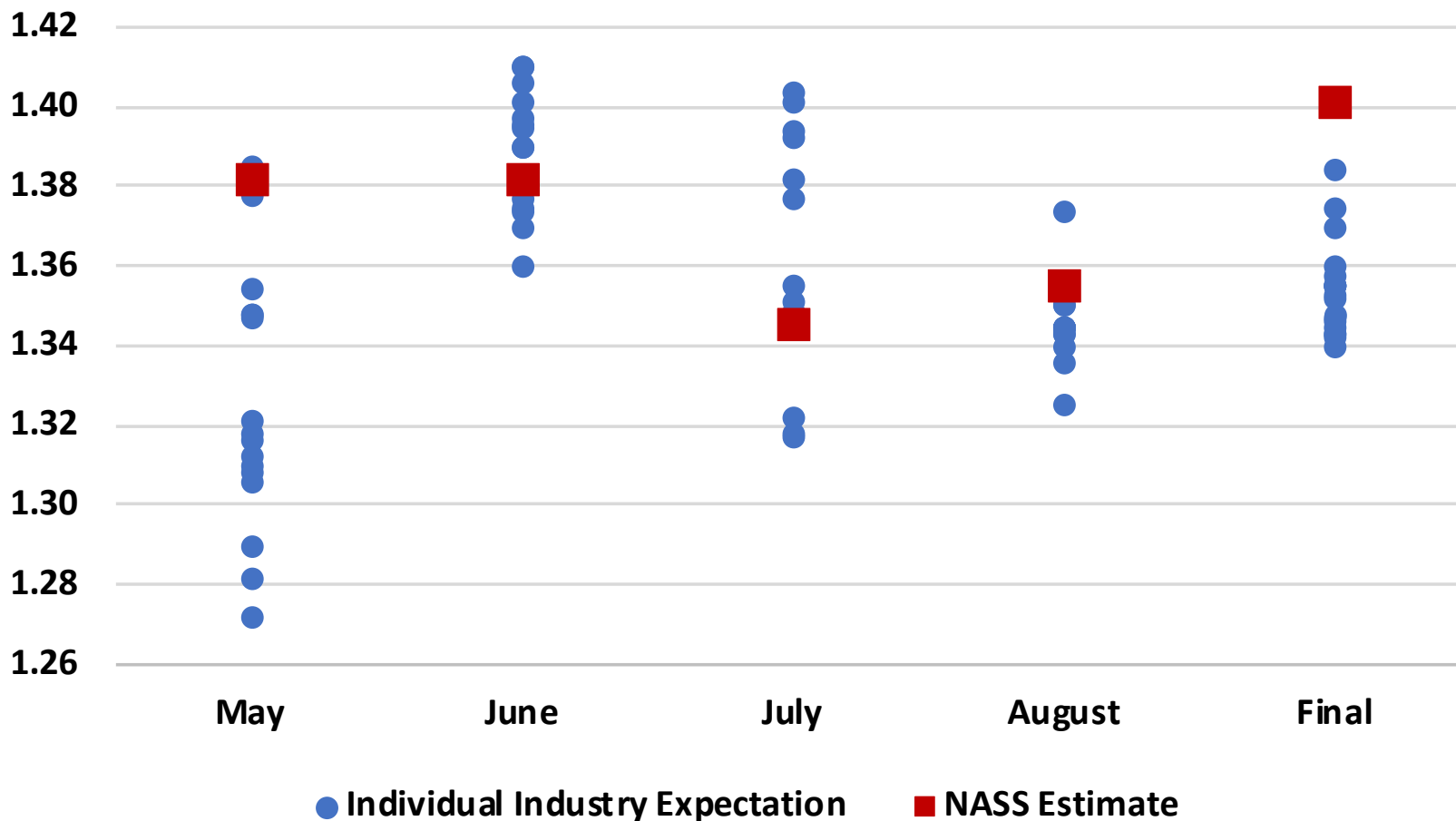
Billion Bushels



2025 U.S. Winter Wheat Production

Industry Expectations vs NASS

Billion Bushels





2025 Other Spring Wheat

Acreage, Yield, and Production

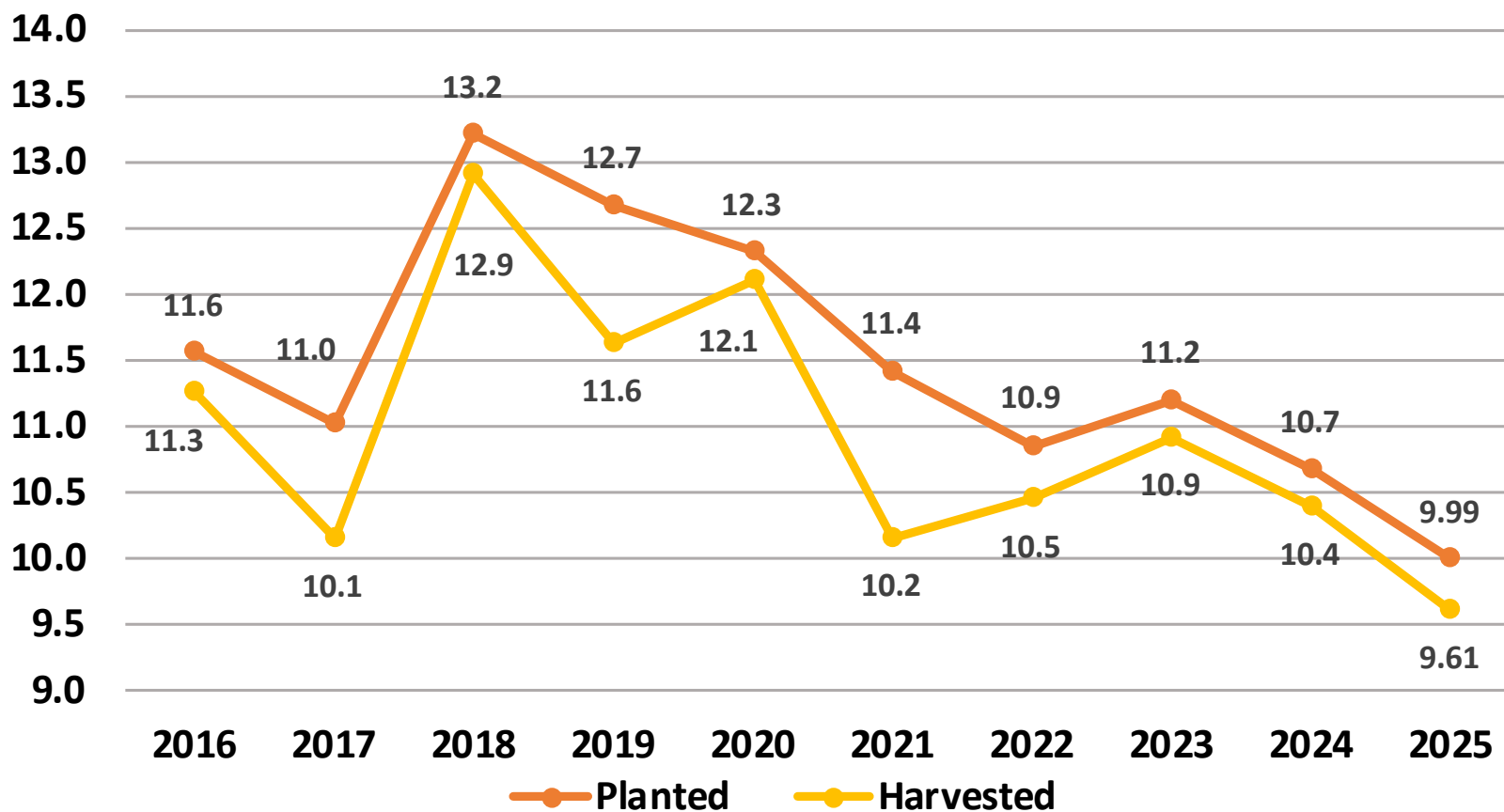
	Planted (1,000 Acres)	Harvested (1,000 Acres)	Yield (Bushels/Acre)	Production (1,000 Bushels)
United States	9,990	9,610	51.7	496,760
% Change from Previous Estimate	NC	↓ 0.8	↑ 3.4	↑ 2.5
% Change from Previous Season	↓ 6.4	↓ 7.5	↓ 1.3	↓ 8.7

Top 5 States - By Production									
	Planted (1,000 Acres)		Harvested (1,000 Acres)		Yield (Bushels/Acre)		Production (1,000 Bushels)		
		% Δ PY		% Δ PY		% Δ PY		% Δ PY	
North Dakota	5,100	↓ 4.7	5,030	↓ 4.4	55.0	↓ 6.8	276,650	↓ 10.9	
Minnesota	1,150	↓ 5.7	1,100	↓ 6.8	69.0	↑ 0.7	75,900	↓ 6.1	
Montana	2,150	↓ 14.0	1,950	↓ 18.4	29.0	↑ 11.5	56,550	↓ 9.0	
Idaho	435	↓ 3.3	420	↓ 3.4	84.0	↓ 5.6	35,280	↓ 8.9	
South Dakota	680	↑ 3.0	640	↑ 0.8	51.0	↑ 4.1	32,640	↑ 4.9	

Other Spring Wheat Acres

United States

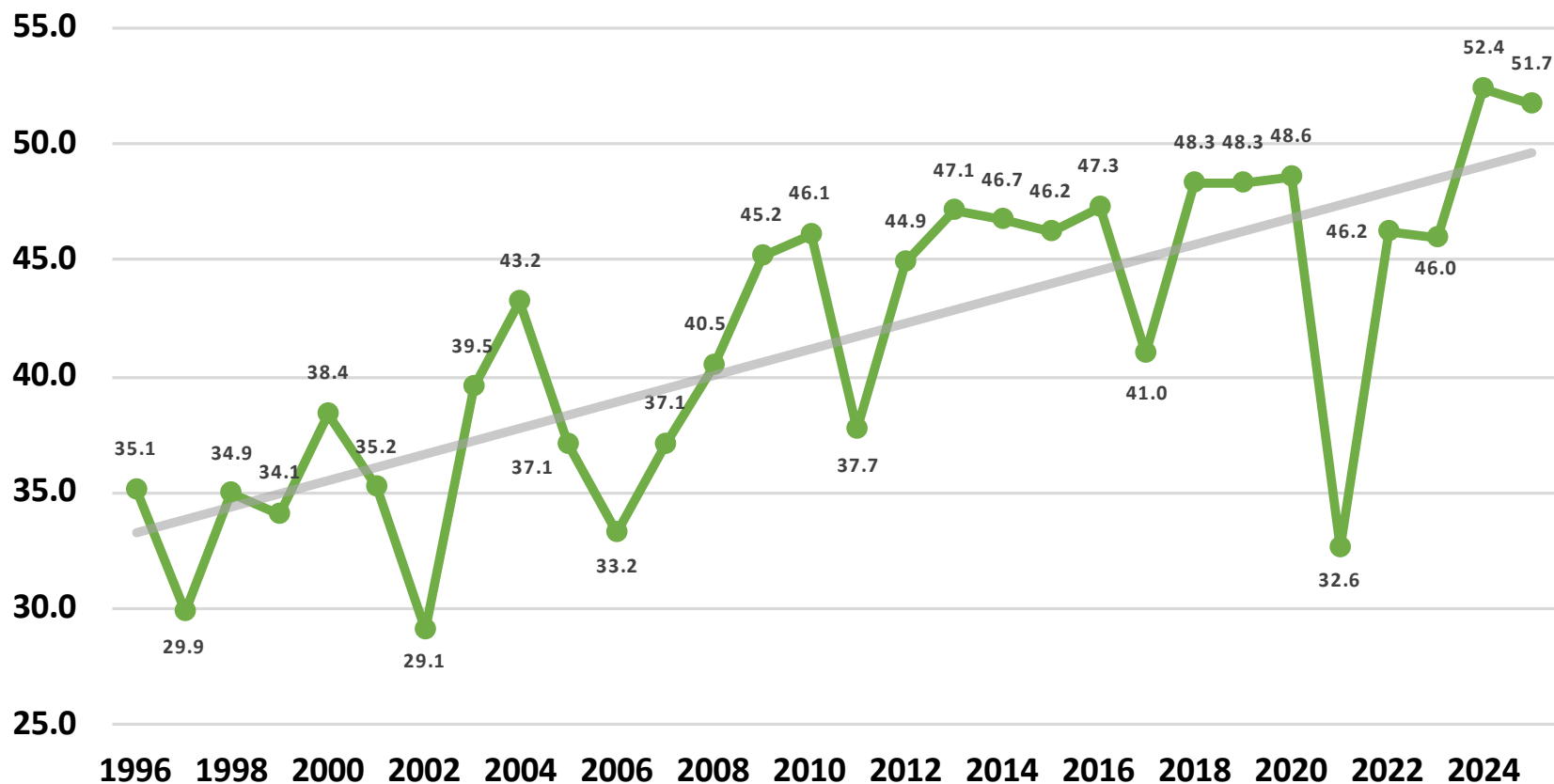
Million Acres



Other Spring Wheat Yield

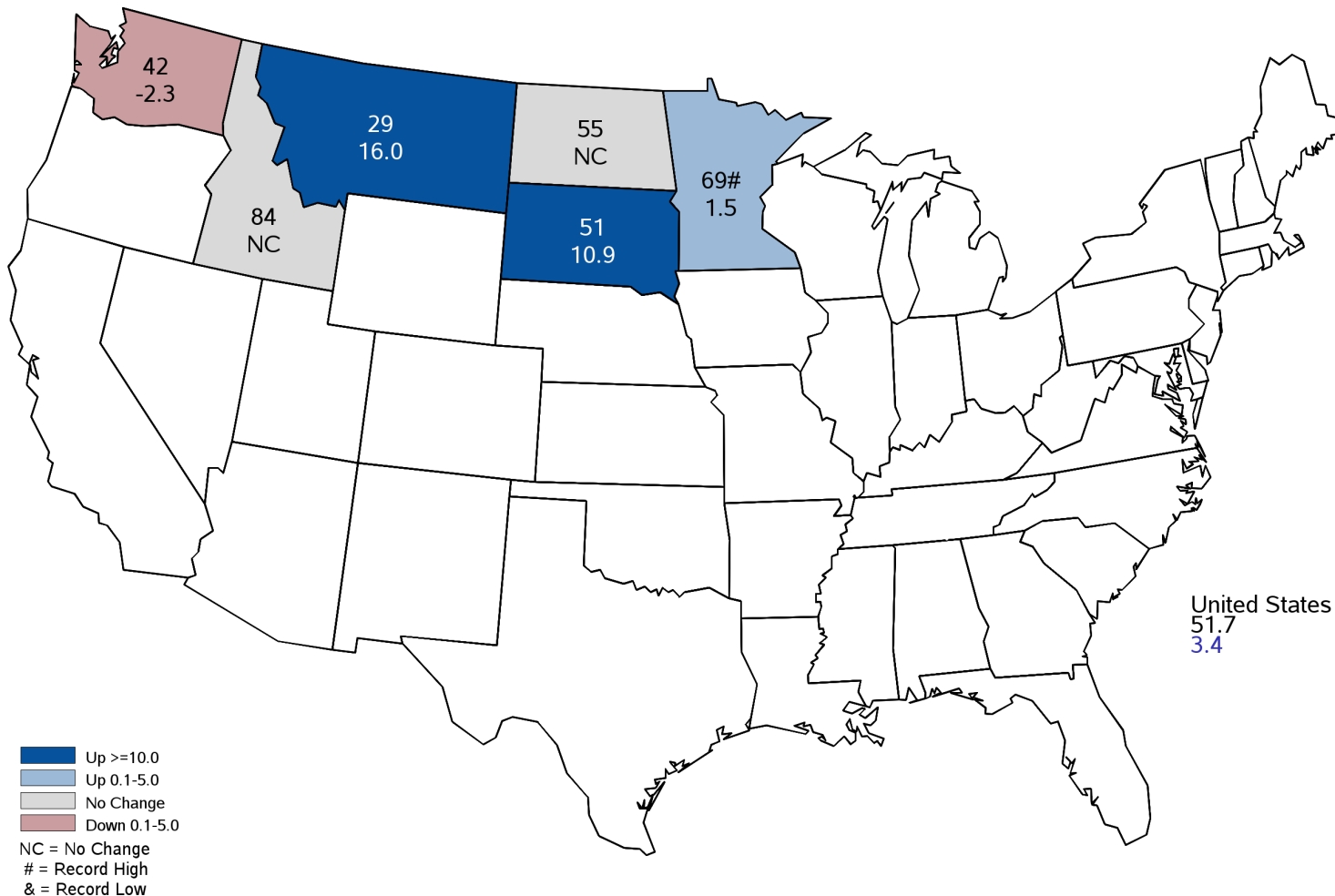
United States

Bushels per Acre



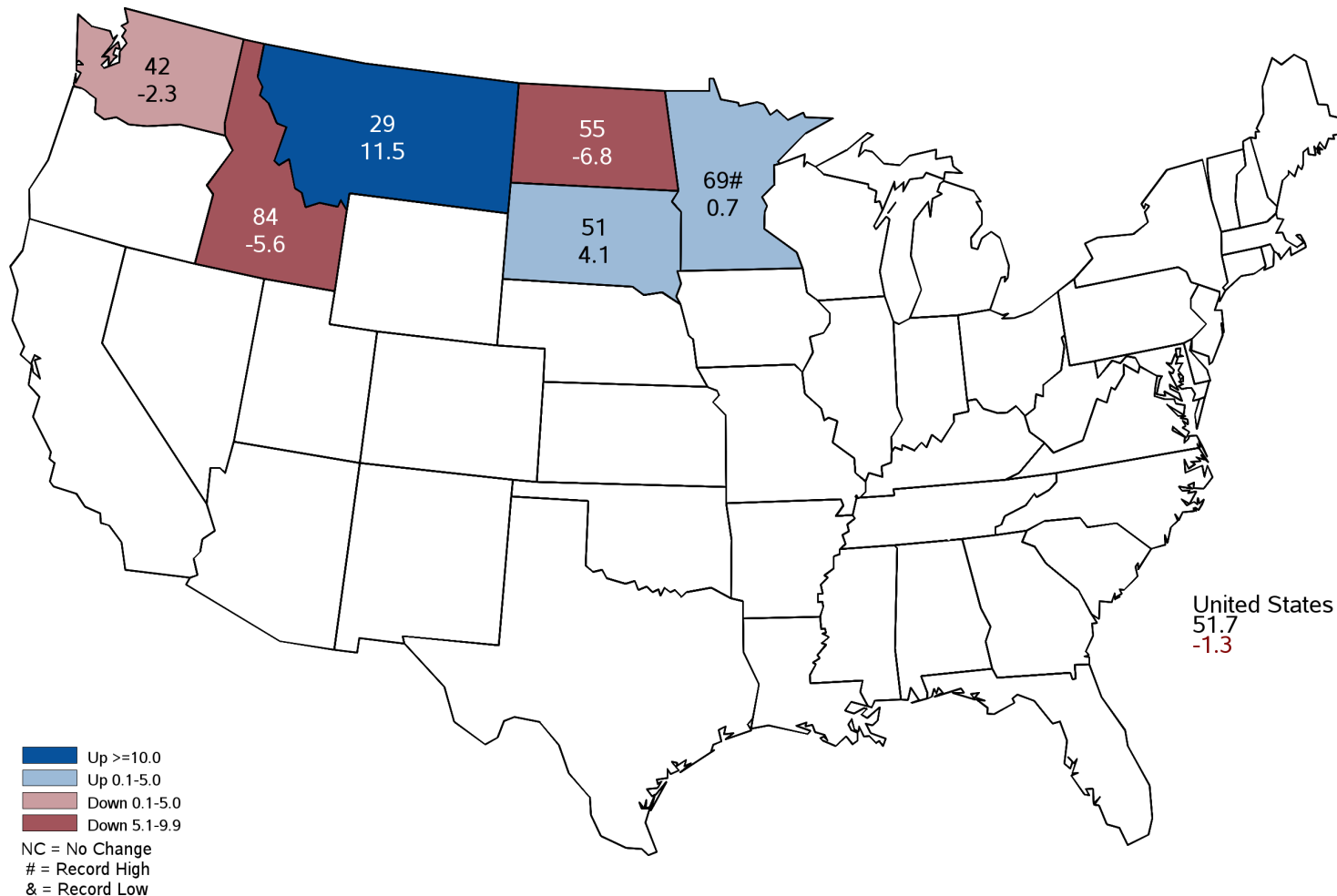
2025 Other Spring Wheat Yield

Bushels and Percent Change from Previous Estimate



2025 Other Spring Wheat Yield

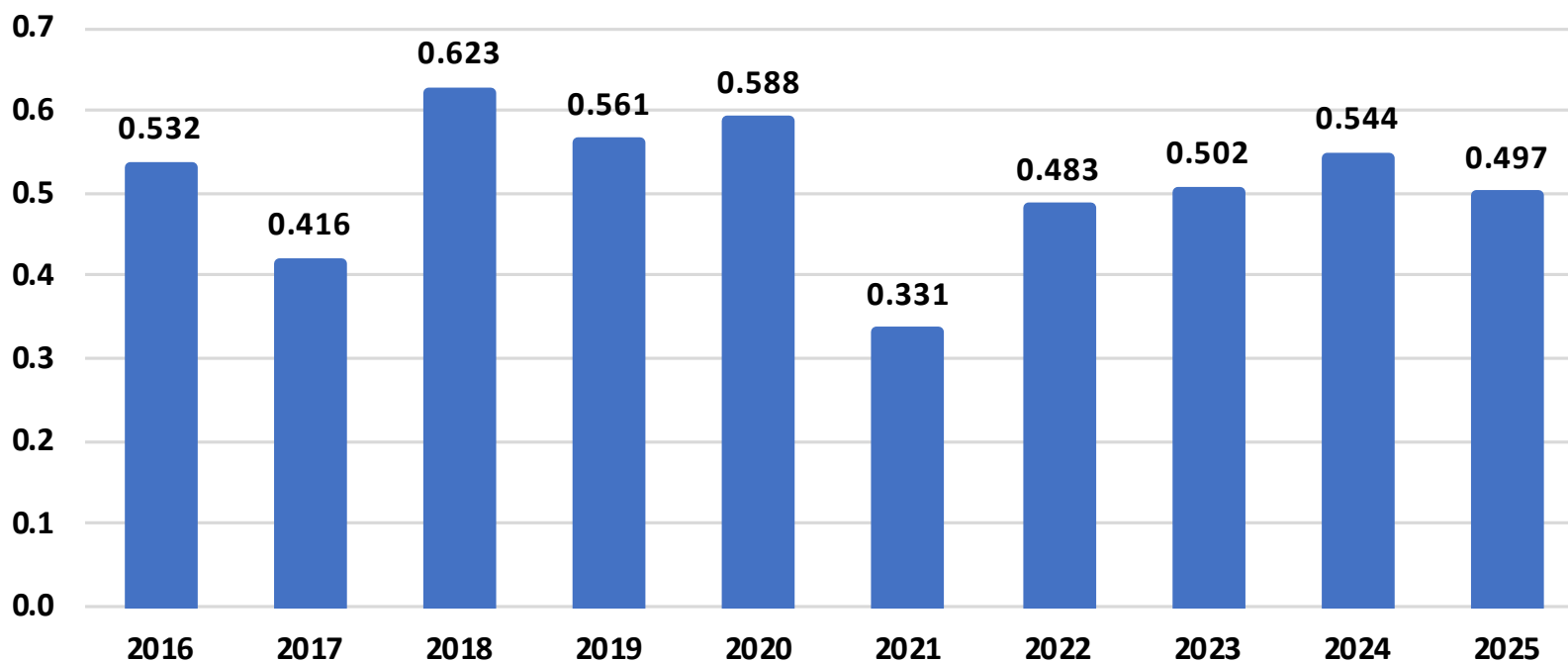
Bushels and Percent Change from Previous Year



Other Spring Wheat Production

United States

Billion Bushels





2025 U.S. Other Spring Wheat Production

Industry Expectations vs NASS

Billion Bushels

0.56

0.54

0.52

0.50

0.48

0.46

0.44

July

August

Final

● Individual Industry Expectation

■ NASS Estimate



2025 Durum Wheat

Acreage, Yield, and Production

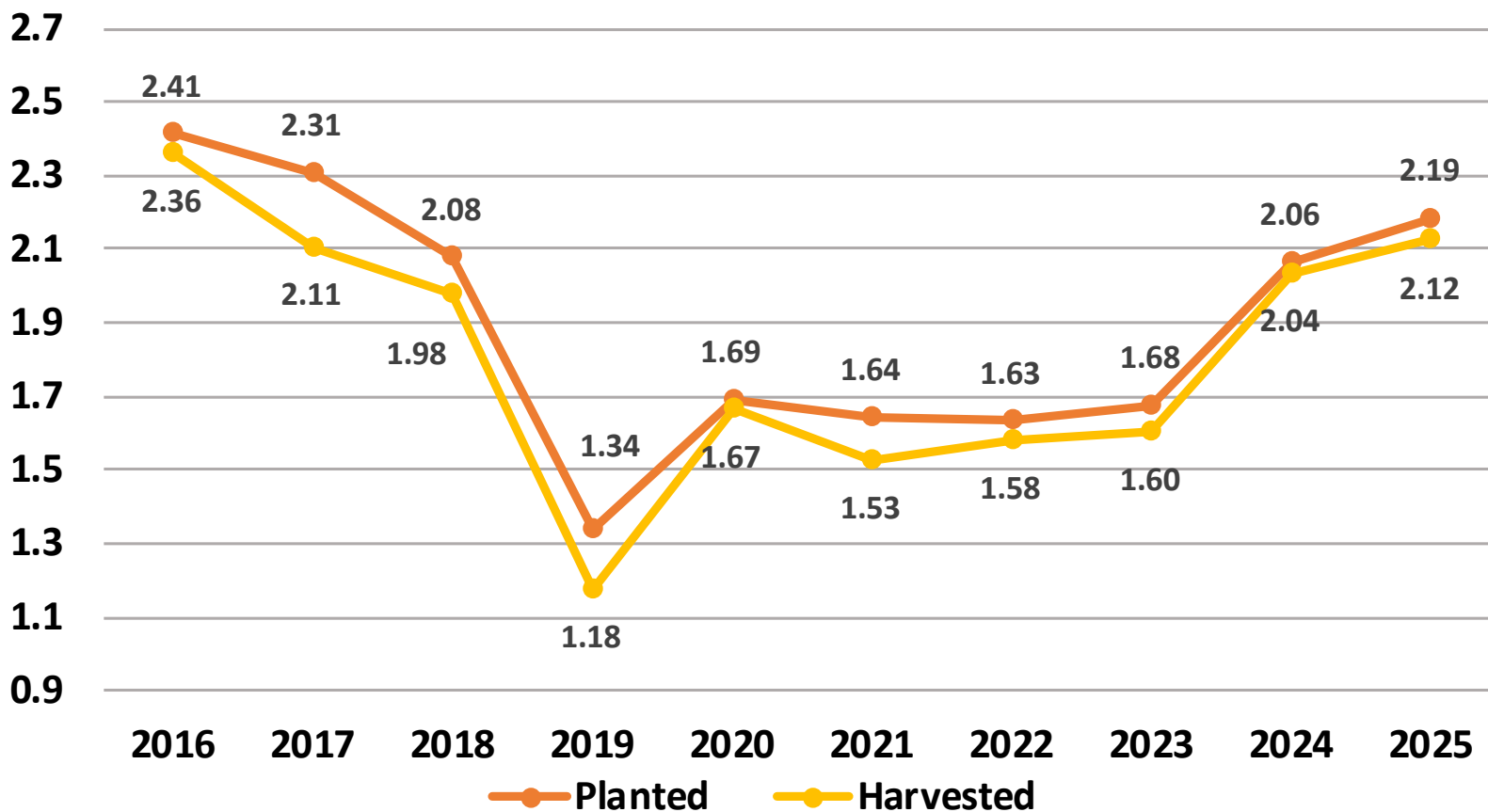
	Planted (1,000 Acres)	Harvested (1,000 Acres)	Yield (Bushels/Acre)	Production (1,000 Bushels)
United States	2,185	2,123	40.6	86,223
% Change from Previous Estimate	↓ <0.1	↓ 0.7	↓ 0.7	↓ 1.4
% Change from Previous Season	↑ 5.9	↑ 4.3	↑ 3.3	↑ 7.7

	Top 4 States - By Production											
	Planted			Harvested			Yield			Production		
	(1,000 Acres)	% Δ PY		(1,000 Acres)	% Δ PY		(Bushels/Acre)	% Δ PY		(1,000 Bushels)	% Δ PY	
North Dakota	1,230	↑	11.8	1,210	↑	10.5	44.0	↓	6.4	53,240	↑	3.4
Montana	890	↑	1.1	850	↓	1.2	30.0	↑	30.4	25,500	↑	28.9
Arizona	50	↓	15.3	49	↓	15.5	117.0	↑	7.3	5,733	↓	9.3
California	15	↓	40.0	14	↓	39.1	125.0	↑	15.7	1,750	↓	29.5

Durum Wheat Acres

United States

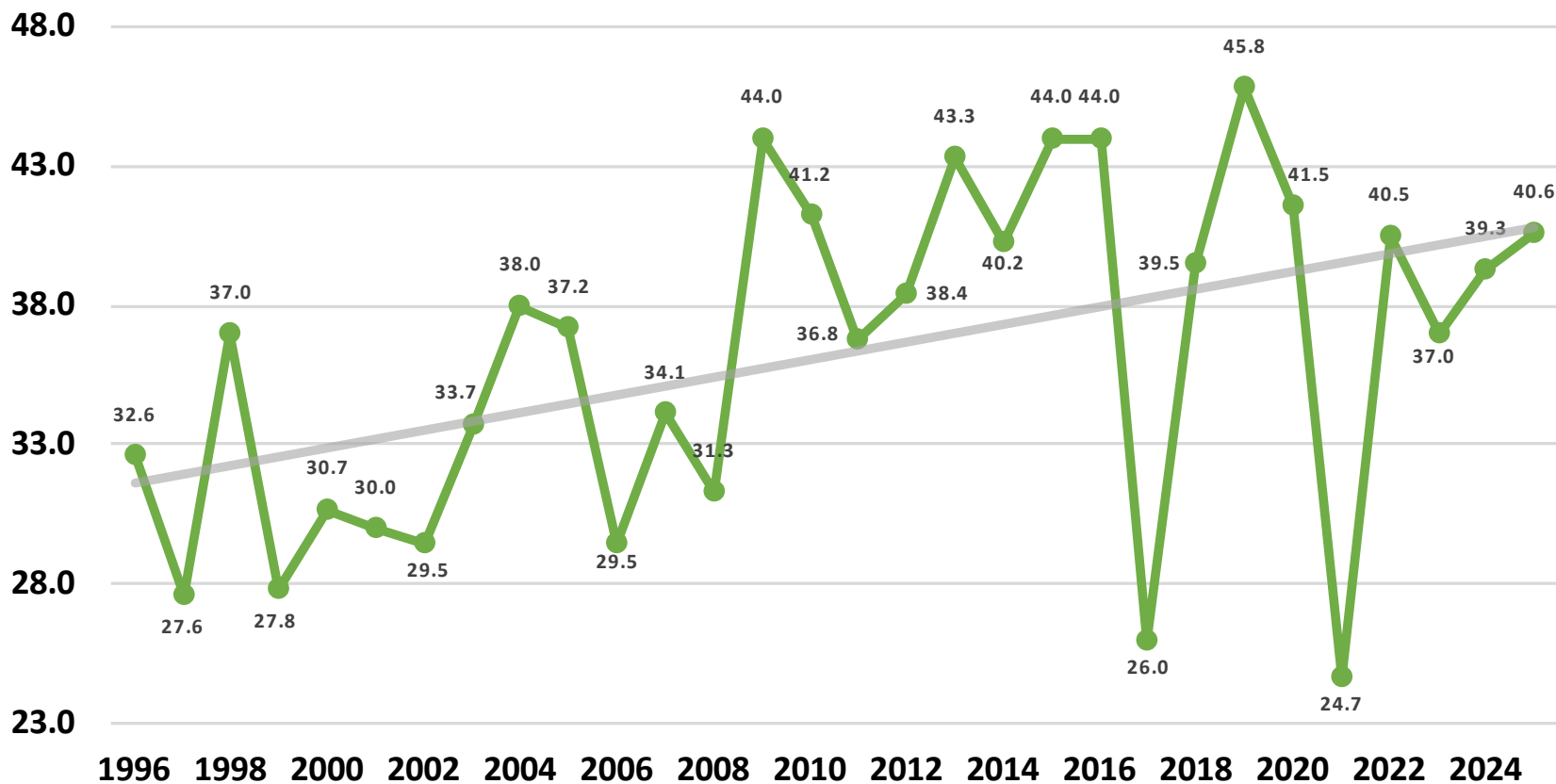
Million Acres



Durum Wheat Yield

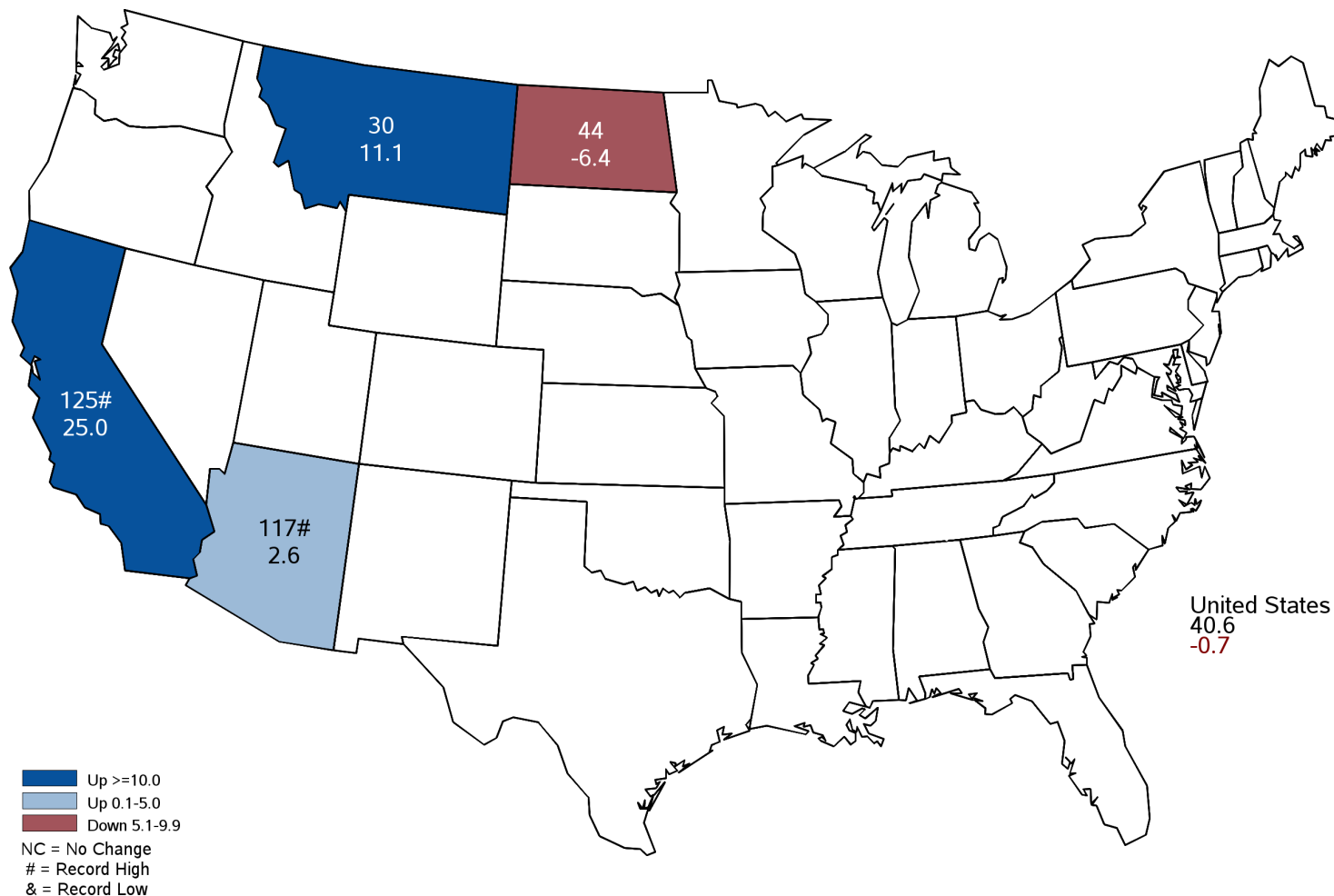
United States

Bushels per Acre



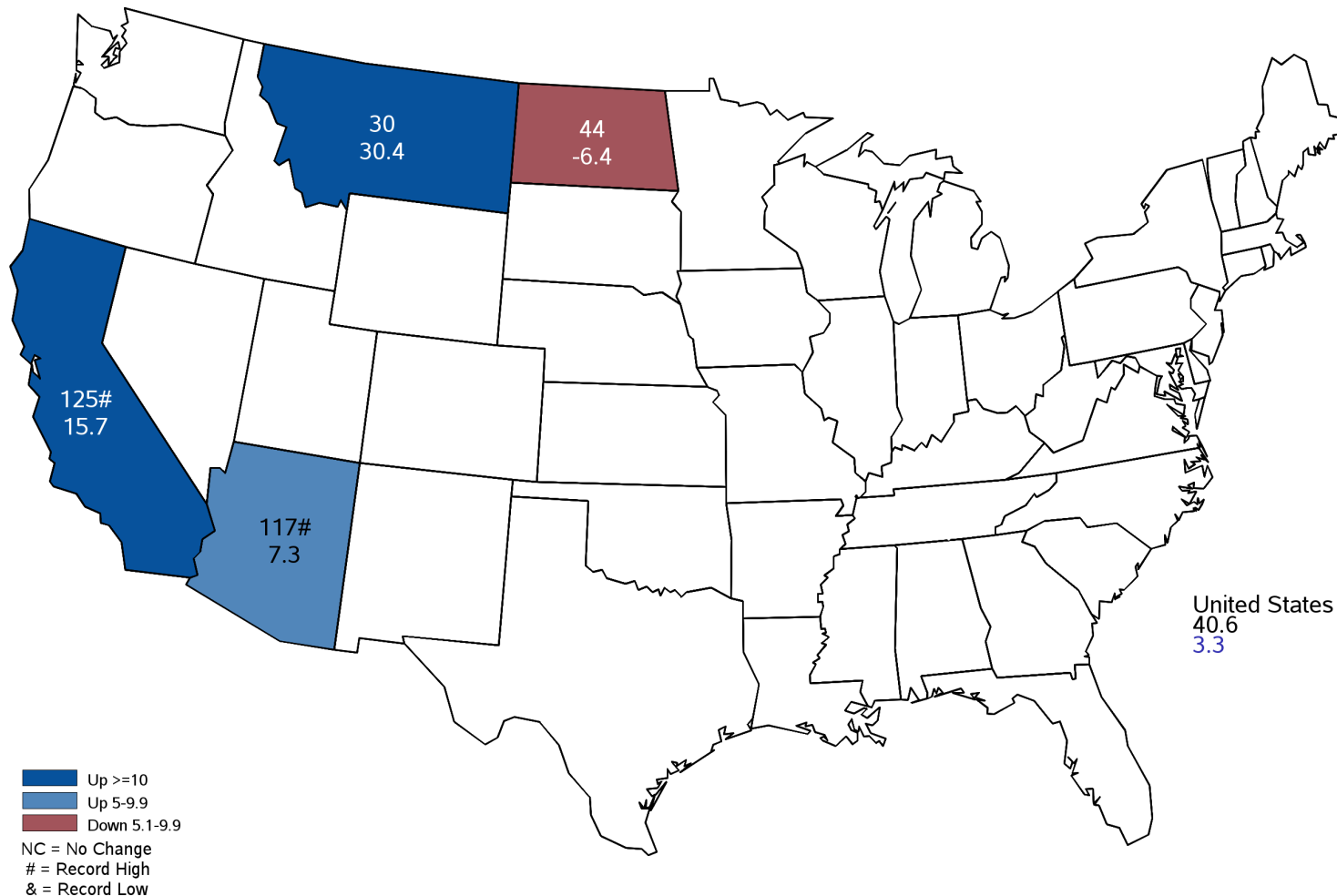
2025 Durum Wheat Yield

Bushels and Percent Change from Previous Estimate



2025 Durum Wheat Yield

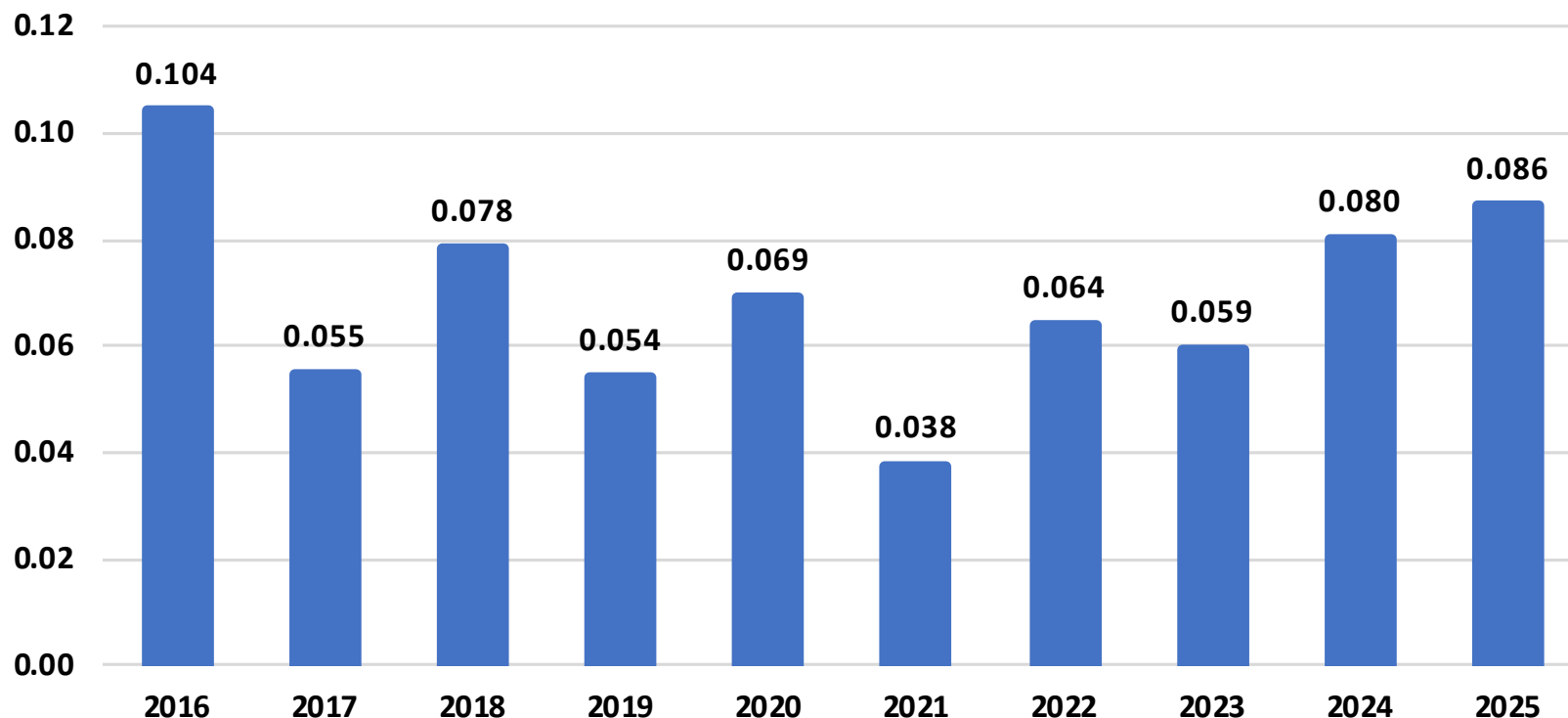
Bushels and Percent Change from Previous Year



Durum Wheat Production

United States

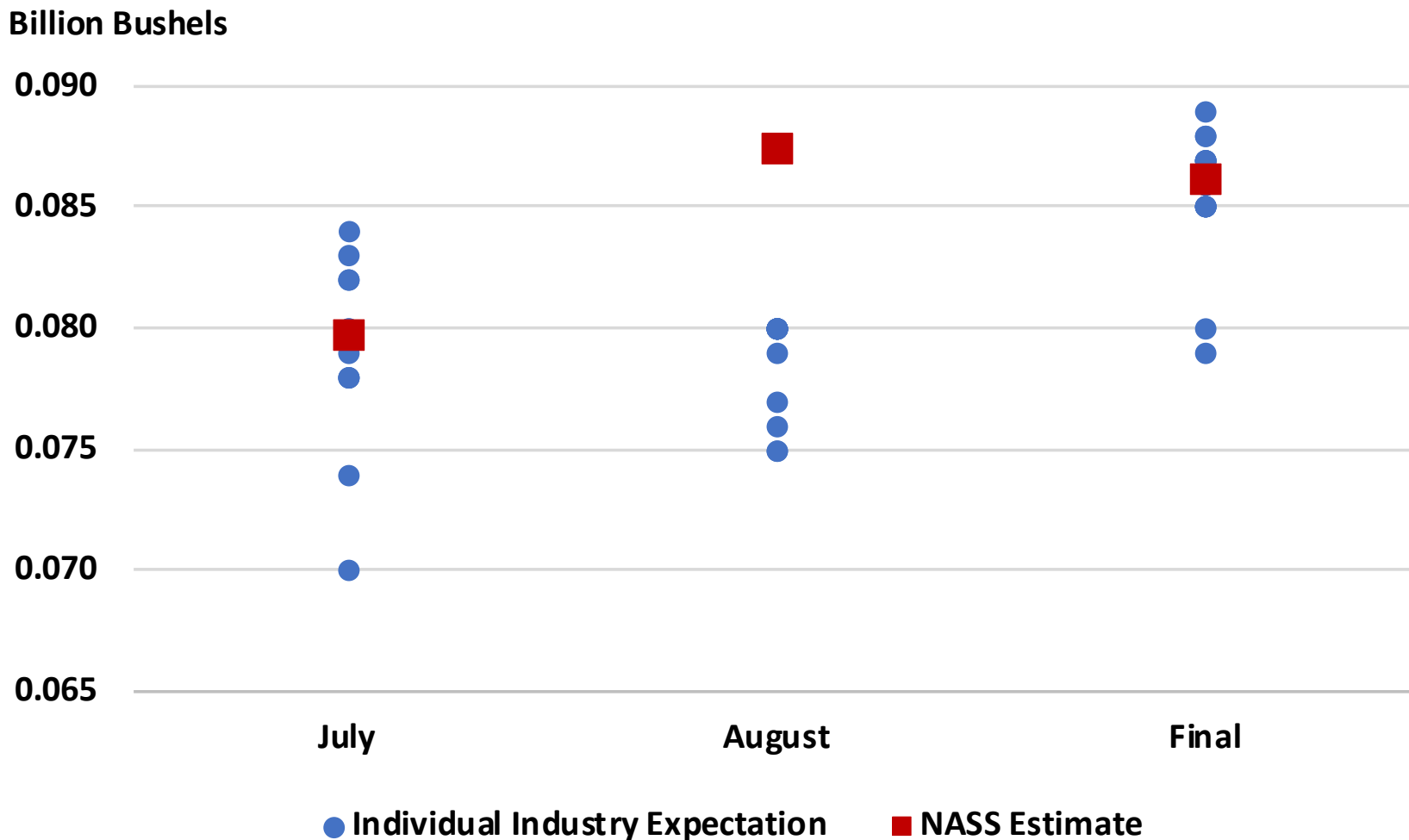
Billion Bushels





2025 U.S. Durum Wheat Production

Industry Expectations vs NASS





2025 Small Grains

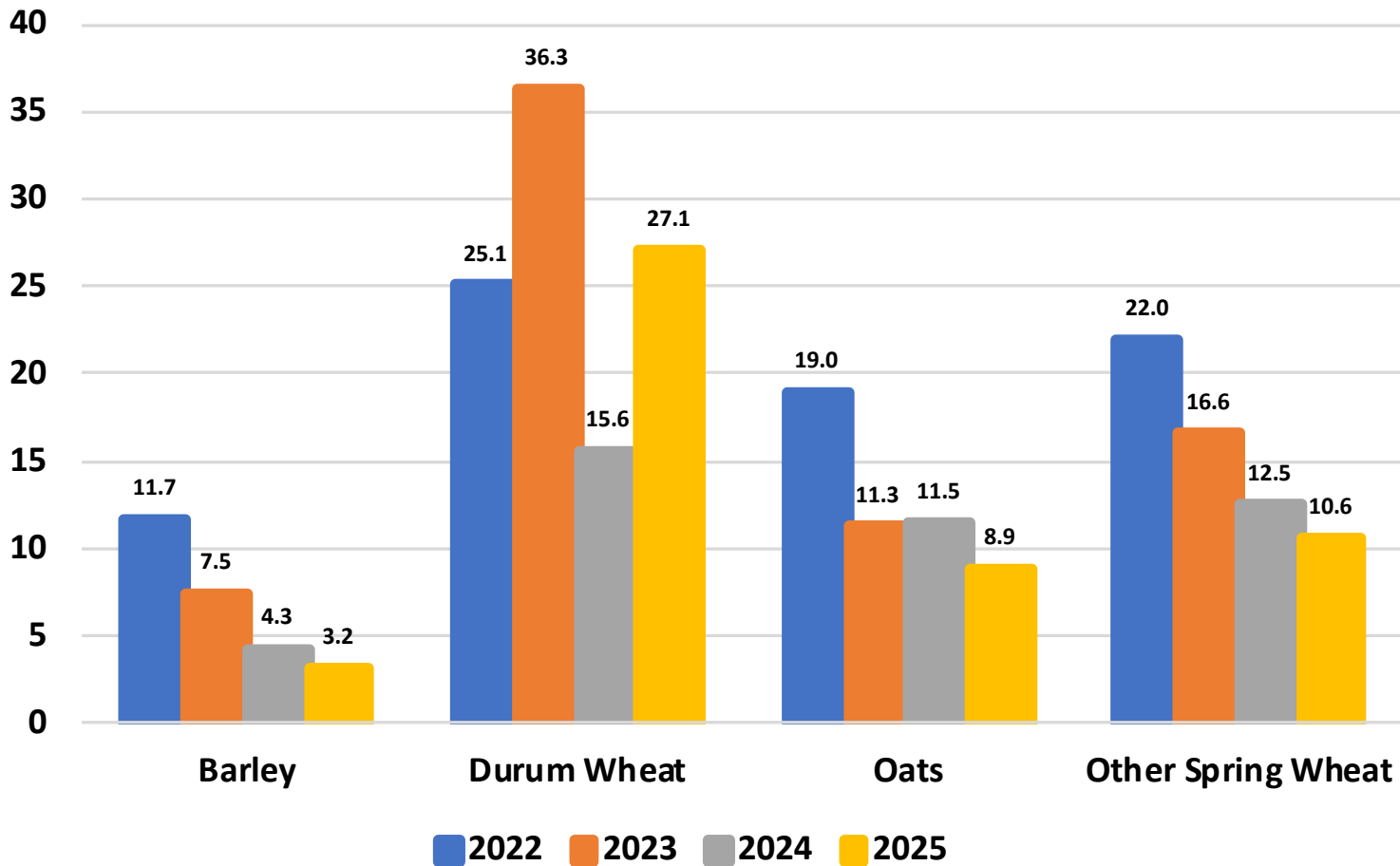
Acreage, Yield, and Production

	Planted (1,000 Acres)	Harvested (1,000 Acres)	Yield (Units per Acre)	Unit	Production (1,000 Units)	Unit
Barley	2,299	1,761	80.0	Bu	140,849	Bu
% Change from Previous Estimate	↑ 0.8	↓ 2.8	↑ 2.7		↓ 0.2	
% Change from Previous Season	↓ 3.4	↓ 6.6	↑ 4.4		↓ 2.5	
Oats	2,370	944	73.8	Bu	69,626	Bu
% Change from Previous Estimate	↑ 1.2	↑ 12.0	↓ 3.1		↑ 8.3	
% Change from Previous Season	↑ 6.0	↑ 5.6	↓ 3.4		↑ 1.9	
Rye	2,229	341	36.5	Bu	12,459	Bu
% Change from Previous Estimate	↓ 7.7	↓ 11.4	N/A		N/A	
% Change from Previous Season	↑ 1.0	↓ 15.2	↓ 0.3		↓ 15.4	

Small Grains

U.S. Percent of Acres Remaining to be Harvested

Percent



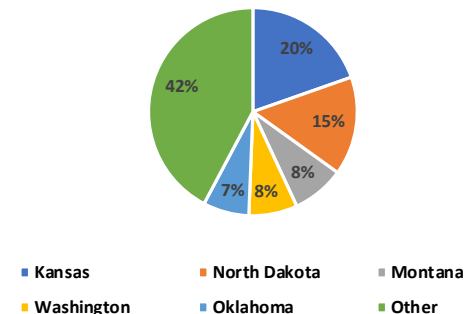


September 2025 All Wheat Stocks

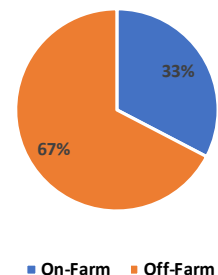
	September 1 Total (1,000 Bu)	September 1 On-Farm (1,000 Bu)	September 1 Off-Farm (1,000 Bu)
United States	2,120,143	692,240	1,427,903
% Change from Previous Season	↑ 6.4	↑ 4.3	↑ 7.5

Top 5 States - By Total Stocks								
	September 1 Total (1,000 Bu)		September 1 On-Farm (1,000 Bu)		September 1 Off-Farm (1,000 Bu)			
		% Δ PY		% Δ PY		% Δ PY		
Kansas	415,935	↑ 21.9	29,500	↓ 3.3	386,435	↑ 24.3		
North Dakota	324,864	↑ 7.8	221,000	↓ 0.5	103,864	↑ 31.0		
Montana	172,903	↑ 3.9	134,000	↑ 4.7	38,903	↑ 1.2		
Washington	159,706	↑ 0.2	18,500	↑ 15.6	141,206	↓ 1.6		
Oklahoma	151,182	↑ 16.1	12,500	↑ 13.6	138,682	↑ 16.4		

September 1, 2025 All Wheat
Total Stocks By State

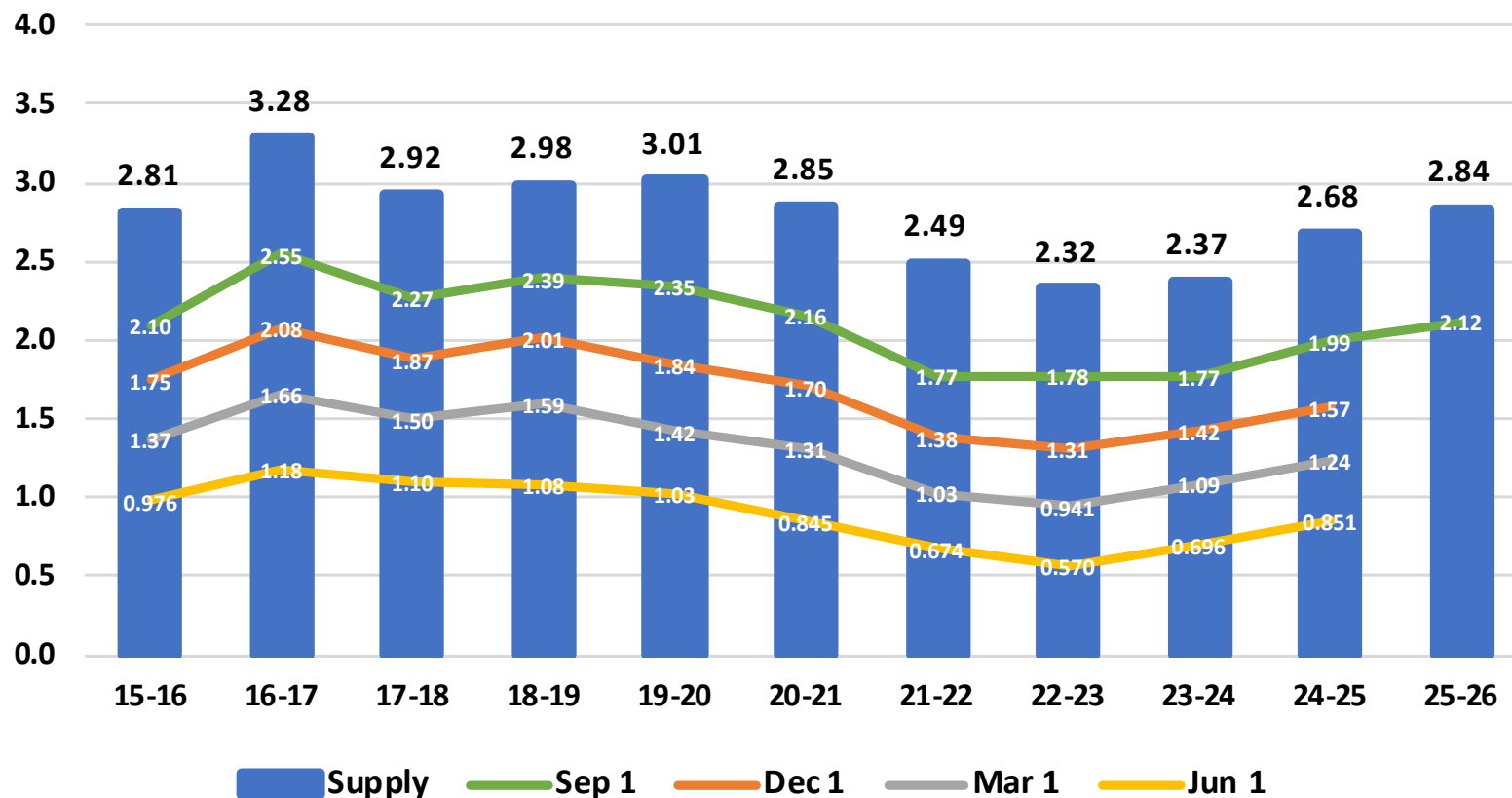


September 1, 2025 All Wheat
Stocks By Position



September 2025 All Wheat Stocks United States

Billion Bushels





2025 U.S. All Wheat Stocks

Industry Expectations vs NASS

Billion Bushels



September

● Individual Industry Expectation ■ NASS Estimate

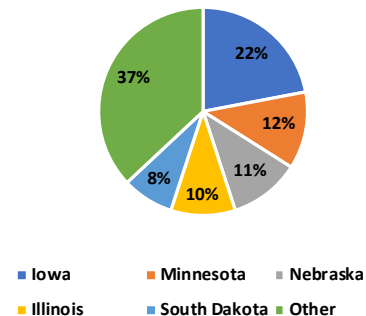


September 2025 Corn Stocks

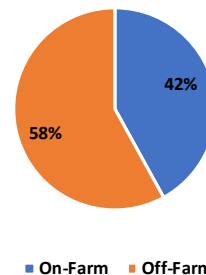
	September 1 Total (1,000 Bu)	September 1 On-Farm (1,000 Bu)	September 1 Off-Farm (1,000 Bu)
United States	1,531,613	643,200	888,413
% Change from Previous Season	↓ 13.1	↓ 17.6	↓ 9.6

Top 5 States - By Total Stocks									
	September 1 Total (1,000 Bu)		September 1 On-Farm (1,000 Bu)		September 1 Off-Farm (1,000 Bu)				
		% Δ PY		% Δ PY		% Δ PY			
Iowa	336,415	↑ 9.9	130,000	↓ 7.1	206,415	↑ 24.2			
Minnesota	176,410	↓ 9.9	96,000	↓ 4.0	80,410	↓ 16.1			
Nebraska	165,813	↑ 12.9	70,000	↓ 1.4	95,813	↑ 26.2			
Illinois	157,210	↓ 32.2	56,000	↓ 26.3	101,210	↓ 35.1			
South Dakota	115,693	↓ 12.5	58,000	↓ 26.6	57,693	↑ 8.4			

September 1, 2025 Corn
Total Stocks By State



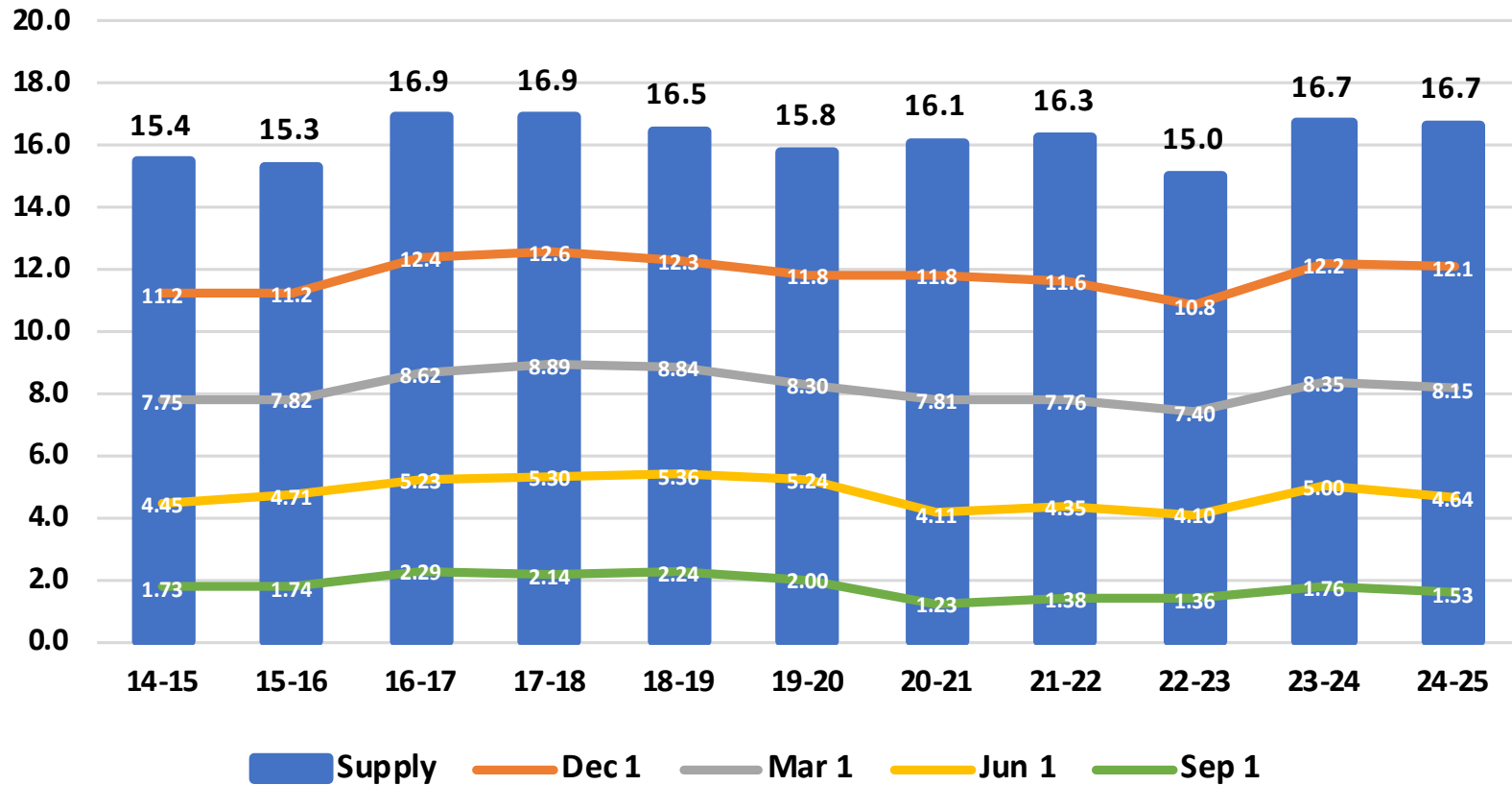
September 1, 2025 Corn
Stocks By Position



September 2025 Corn Stocks

United States

Billion Bushels





2025 U.S. Corn Stocks

Industry Expectations vs NASS

Billion Bushels

1.55

1.50

1.45

1.40

1.35

1.30

1.25

September

● Individual Industry Expectation ■ NASS Estimate





2024 U.S. Corn Crop

Balance Sheet

	Previous Estimates (Million Bushels)	September 30 Estimates (Million Bushels)	Change (Million Bushels)
Sept. 1, 2024 Beginning Stocks	1,763	1,763	NC
2024 Production	14,867	14,892	↑ 25
Imports	20 *	20 *	NC
Total Supply	16,650	16,675	↑ 25
Exports	2,830 *	2,830 *	NC
Food, Seed, and Industrial	6,820 *	6,820 *	NC
Measured Disappearance	9,650 *	9,650 *	NC
Ending Stocks	1,325 *	1,532	↑ 207
Residual	5,675 *	5,494	↓ 182

* WAOB Forecast - September WASDE Report

Note: Totals may not add due to rounding.

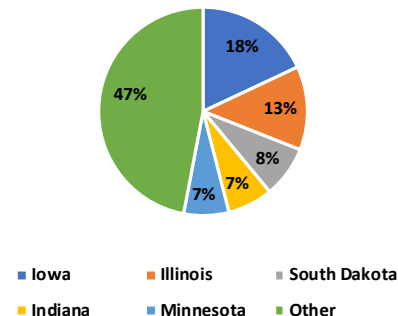


September 2025 Soybeans Stocks

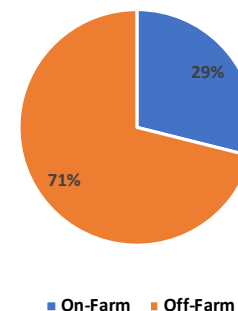
	September 1 Total (1,000 Bu)	September 1 On-Farm (1,000 Bu)	September 1 Off-Farm (1,000 Bu)
United States	316,498	91,500	224,998
% Change from Previous Season	↓ 7.6	↓ 17.7	↓ 2.7

Top 5 States - By Total Stocks							
	September 1 Total (1,000 Bu)		September 1 On-Farm (1,000 Bu)		September 1 Off-Farm (1,000 Bu)		
		% Δ PY		% Δ PY		% Δ PY	
Iowa	57,130	↓ 22.1	12,500	↓ 51.9	44,630	↓ 5.7	
Illinois	40,866	↓ 11.2	8,200	↓ 28.7	32,666	↓ 5.3	
South Dakota	26,495	↑ 16.5	13,000	↑ 71.1	13,495	↓ 10.9	
Indiana	23,722	↓ 11.3	3,900	↑ 8.3	19,822	↓ 14.4	
Minnesota	21,291	↓ 40.0	8,500	↓ 45.2	12,791	↓ 36.0	

September 1, 2025 Soybean
Total Stocks By State



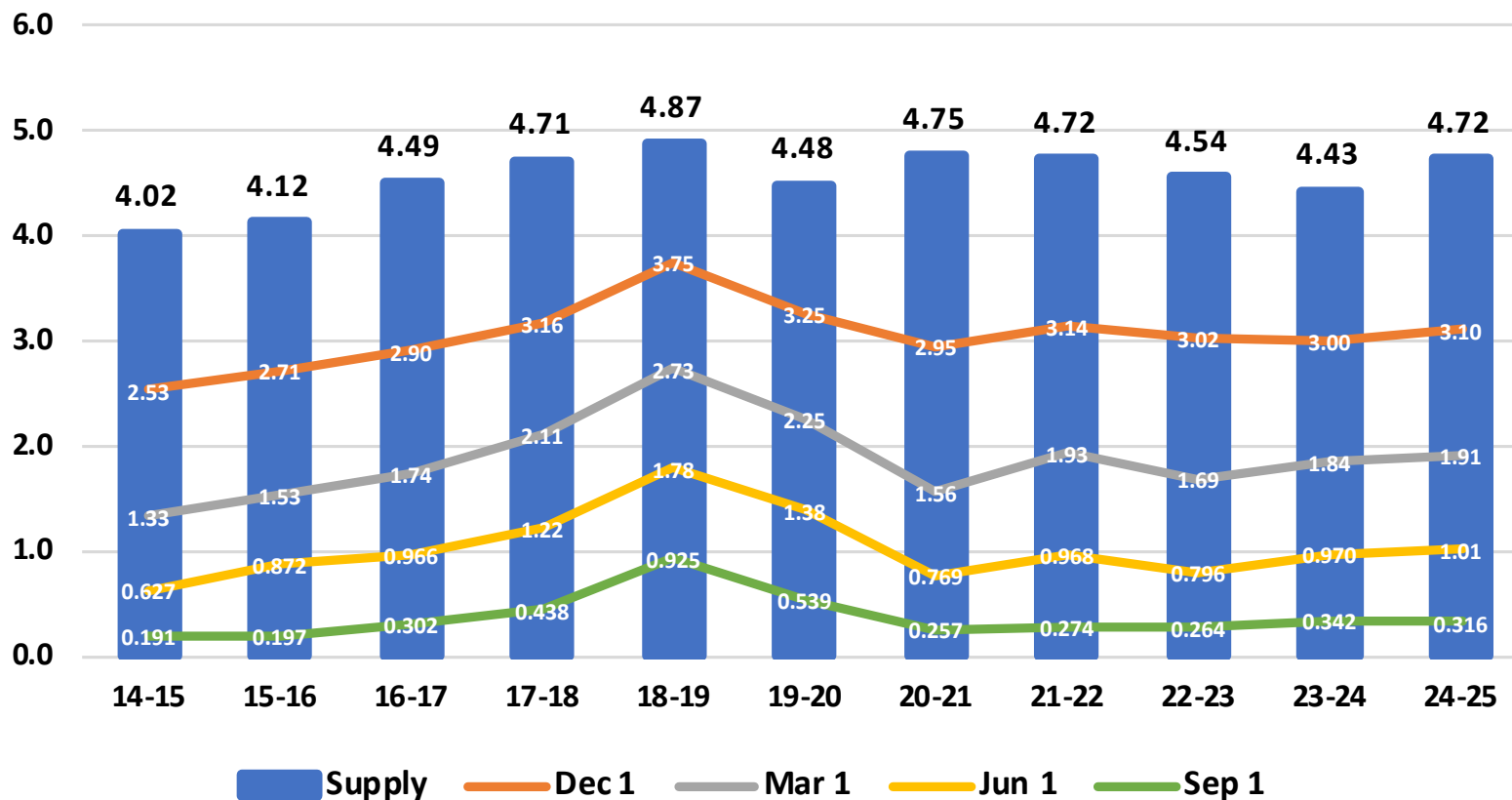
September 1, 2025 Soybean
Stocks By Position



September 2025 Soybean Stocks

United States

Billion Bushels





2025 U.S. Soybean Stocks

Industry Expectations vs NASS

Billion Bushels

0.37

0.36

0.35

0.34

0.33

0.32

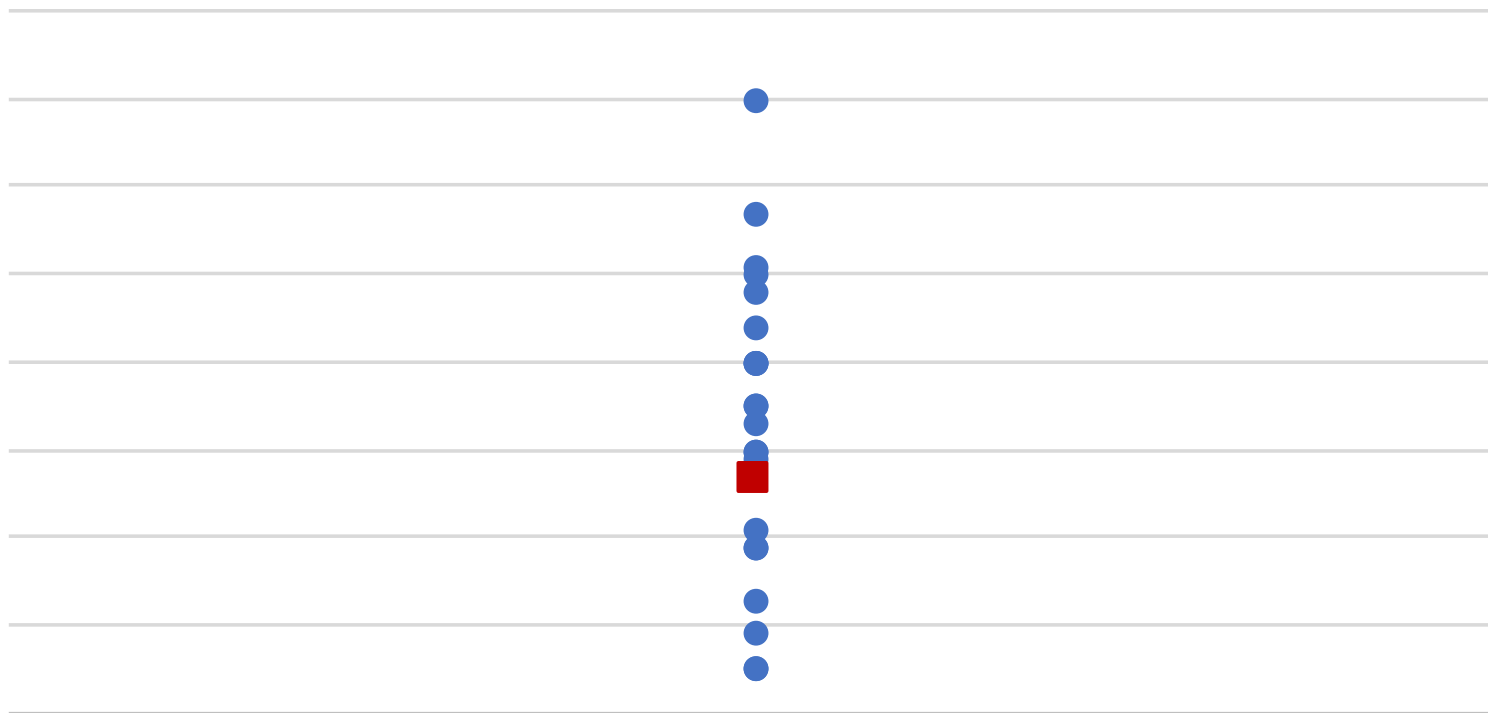
0.31

0.30

0.29

September

● Individual Industry Expectation ■ NASS Estimate





2024 U.S. Soybean Crop

Balance Sheet

	Previous Estimates (Million Bushels)	September 30 Estimates (Million Bushels)	Change (Million Bushels)
Sept. 1, 2024 Beginning Stocks	342	342	NC
2024 Production	4,366	4,374	↑ 8
Imports	27 *	27 *	NC
Total Supply	4,736	4,744	↑ 8
Crushings	2,430 *	2,430 *	NC
Exports	1,875 *	1,875 *	NC
Seed	70 *	70 *	NC
Measured Disappearance	4,375 *	4,375 *	NC
Ending Stocks	330 *	316	↓ 14
Residual	31 *	52	↑ 21

* WAOB Forecast - September WASDE Report

Note: Totals may not add due to rounding.



September 2025

Stocks

	Unit	September 1 Total (1,000 Units)	September 1 On-Farm (1,000 Units)	September 1 Off-Farm (1,000 Units)
Barley	Bushels	150,049	96,000	54,049
% Change from Previous Year		↓ 2.6	↑ 6.4	↓ 15.3
Durum Wheat	Bushels	71,104	51,500	19,604
% Change from Previous Year		↑ 5.7	↑ 9.3	↓ 2.9
Oats	Bushels	67,463	41,350	26,113
% Change from Previous Year		↑ 3.4	↑ 7.1	↓ 1.9
Safflower	Pounds	11,544	1,702	9,842
% Change from Previous Year		↓ 15.4	↓ 49.8	↓ 4.1
Sorghum	Bushels	40,034	2,530	37,504
% Change from Previous Year		↑ 22.4	↓ 13.9	↑ 26.0
Sunflower	Pounds	208,972	21,200	187,772
% Change from Previous Year		↓ 63.4	↓ 84.8	↓ 56.6



Selected Upcoming Reports

October 1	Cotton System Fats & Oils Grain Crashings
October 9	Cotton Ginnings Crop Production
October 24	Cattle on Feed
October 31	Tenure, Ownership, and Transition of Agricultural Land (TOTAL) Agricultural Prices

<https://www.nass.usda.gov/Publications/index.php>



Data Users' Meeting

Fall 2025

USDA Data Users' Meeting

**October 21
1 p.m. CT
West Des Moines, IA**

Join in-person or virtually

www.nass.usda.gov/go/data_users



USDA Fall Data Users' Meeting

Join Us Online or in West Des Moines

October 21, 2025, 1:00pm CT

For more information and to register please go to

www.nass.usda.gov/go/data_users



#StatChat



STAT CHAT SERIES

Post questions
ahead of time using
#StatChat.



Join @usda_nass on X to discuss the **Grain Stocks** and **Small Grains Summary** reports with NASS Agricultural Statistics Board Chair, Lance Honig. Post questions ahead of time using #StatChat.

TUE, SEPT. 30 @ 1:30PM ET



#STATCHAT





All Reports Available At

www.nass.usda.gov

For Questions

(202) 720-2127

(800) 727-9540

nass@usda.gov