



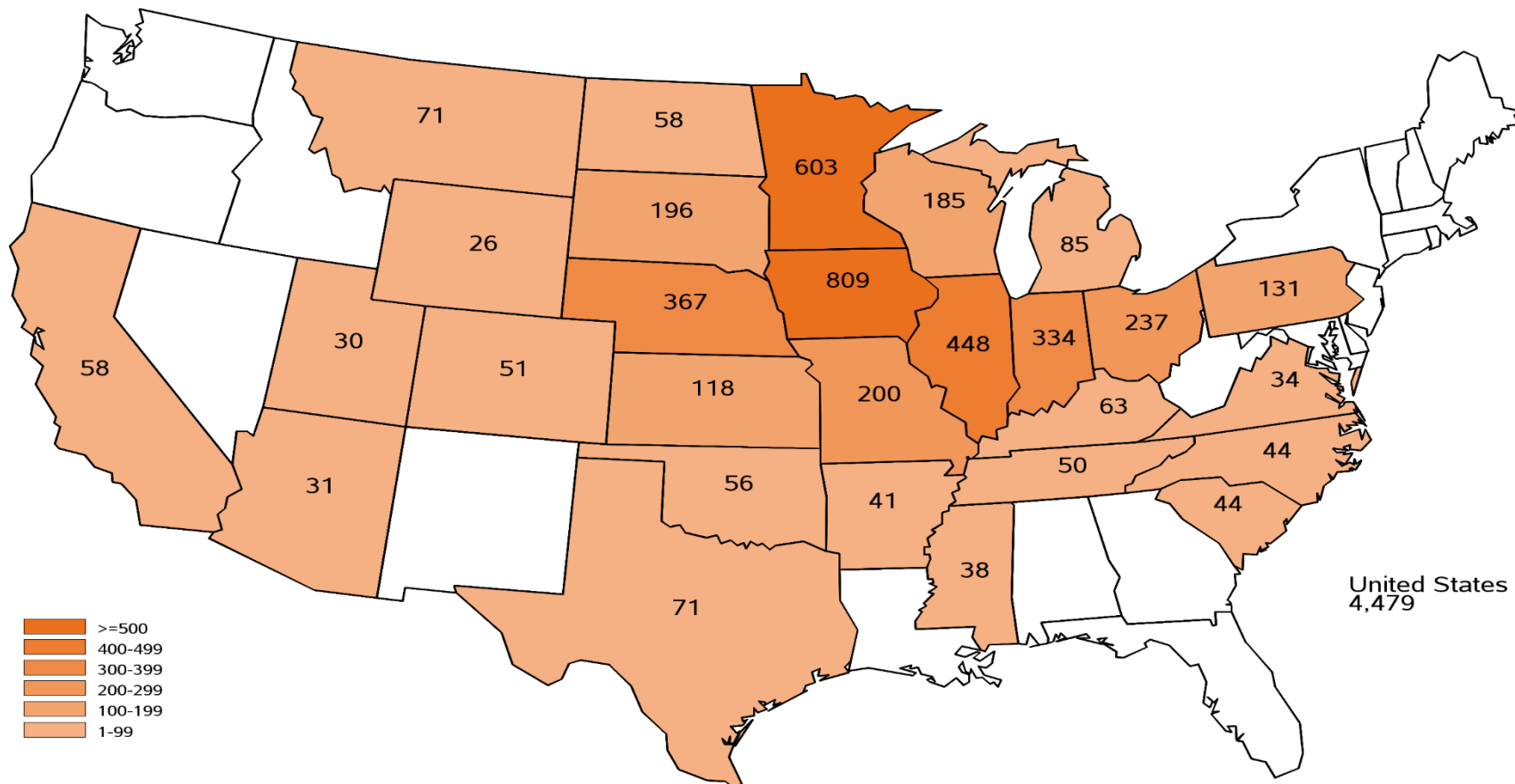
September Quarterly Hogs and Pigs

Agricultural Statistics Board Briefing

Travis Averill, Chief
Livestock Branch



2025 September Hogs and Pigs Survey Sample Size





U.S. Hogs and Pigs Revisions



Survey	Item	Initial Estimate (1,000 head)	Current Revision (1,000 head)	Net Revision (1,000 head)	Current Estimate (1,000 head)
March 1, 2025	All Hogs and Pigs	74,512	-750	-515	73,997
	Pig Crop	33,701	-712	-712	32,989
June 1, 2025	All Hogs and Pigs	75,137	-1,420	-1,420	73,717
	Pig Crop	34,171	-621	-621	33,550

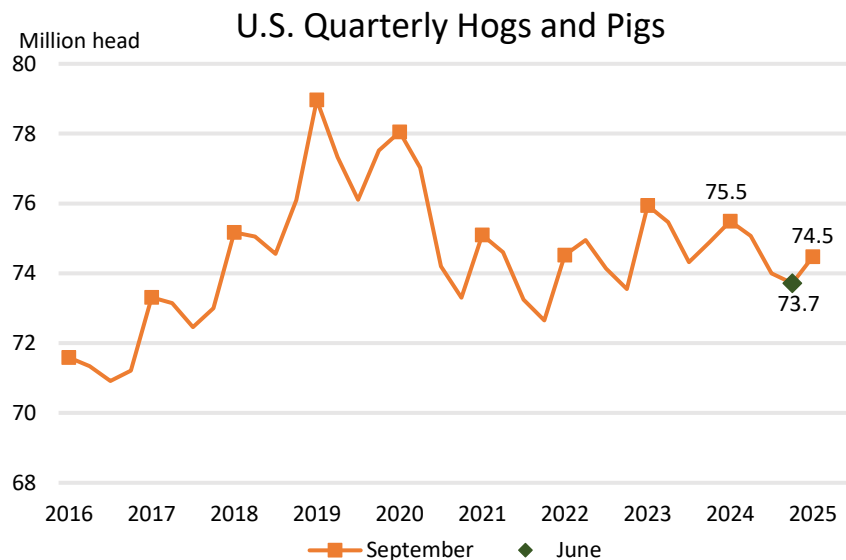


U.S. Hogs and Pigs September 1



	2024 (1,000 head)	2025	% Change from Previous Year	
All Hogs and Pigs	75,490	74,472	↓	1.3
Breeding Hogs	6,044	5,934	↓	1.8
Market Hogs	69,447	68,538	↓	1.3

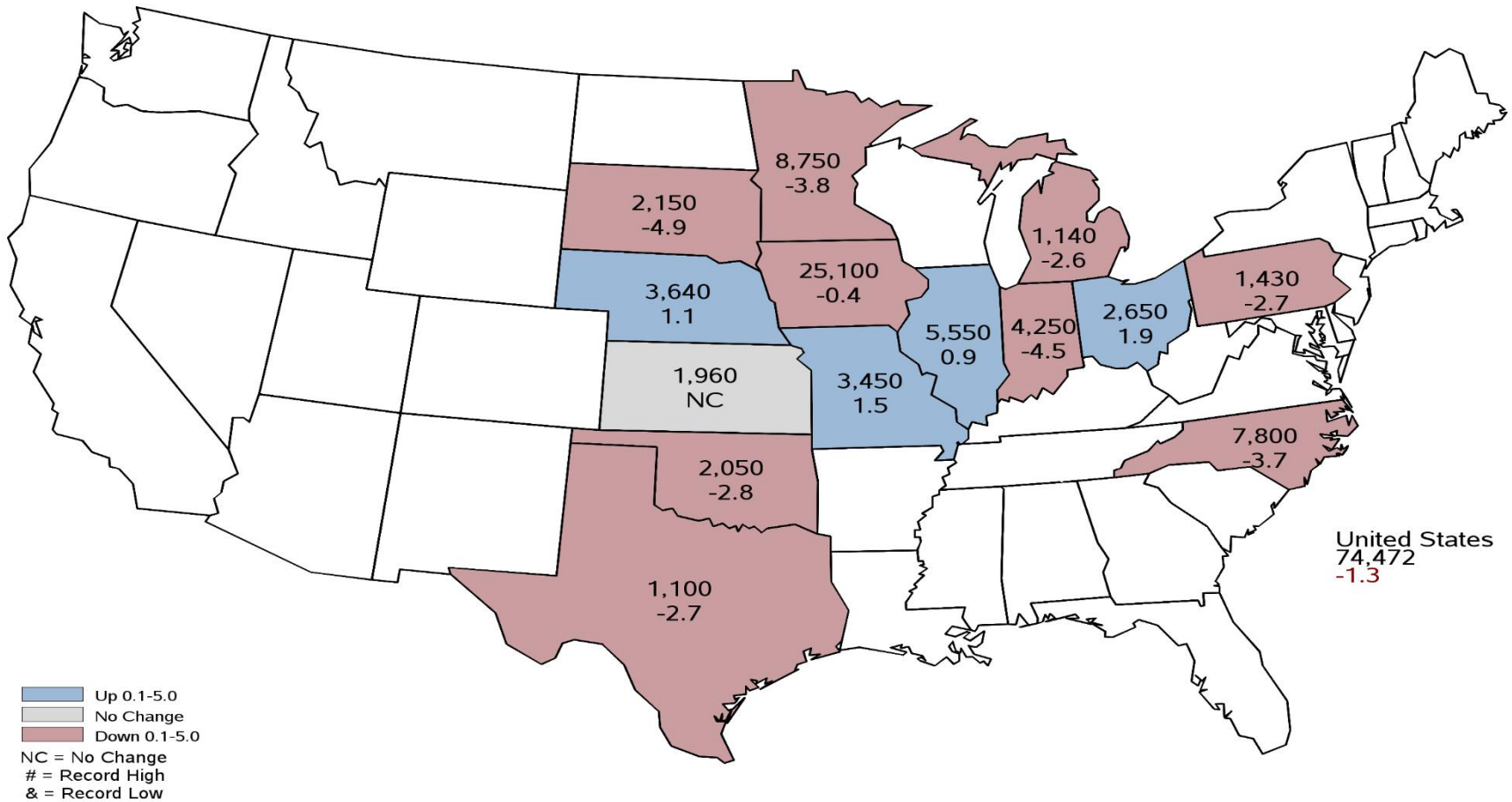
Top 5 States	
Inventory	
(1,000 head)	
Iowa	25,100
Minnesota	8,750
North Carolina	7,800
Illinois	5,550
Indiana	4,250





September 1, 2025 Hogs and Pigs Inventory

(1,000) Head and Percent Change from Previous Year

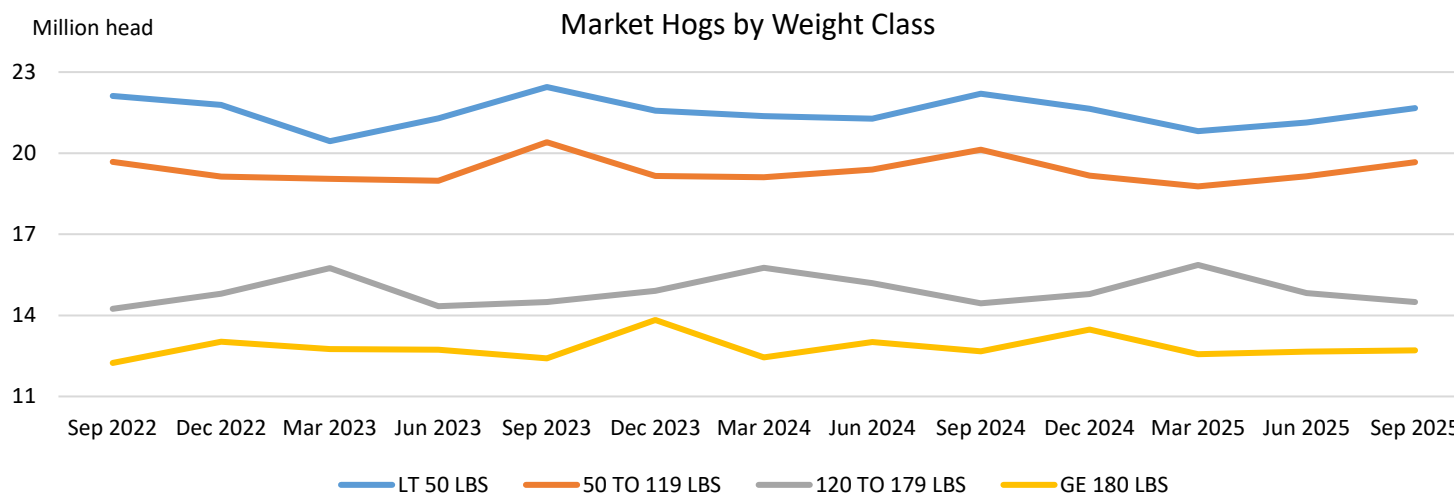




U.S. Hogs and Pigs September 1



	2024 (1,000 head)	2025	% Change from Previous Year	
Market Hogs	69,447	68,538	↓	1.3
Less than 50 lbs	22,194	21,662	↓	2.4
50 – 119 lbs	20,132	19,667	↓	2.3
120 – 179 lbs	14,447	14,498	↑	0.4
180 lbs or more	12,674	12,711	↑	0.3

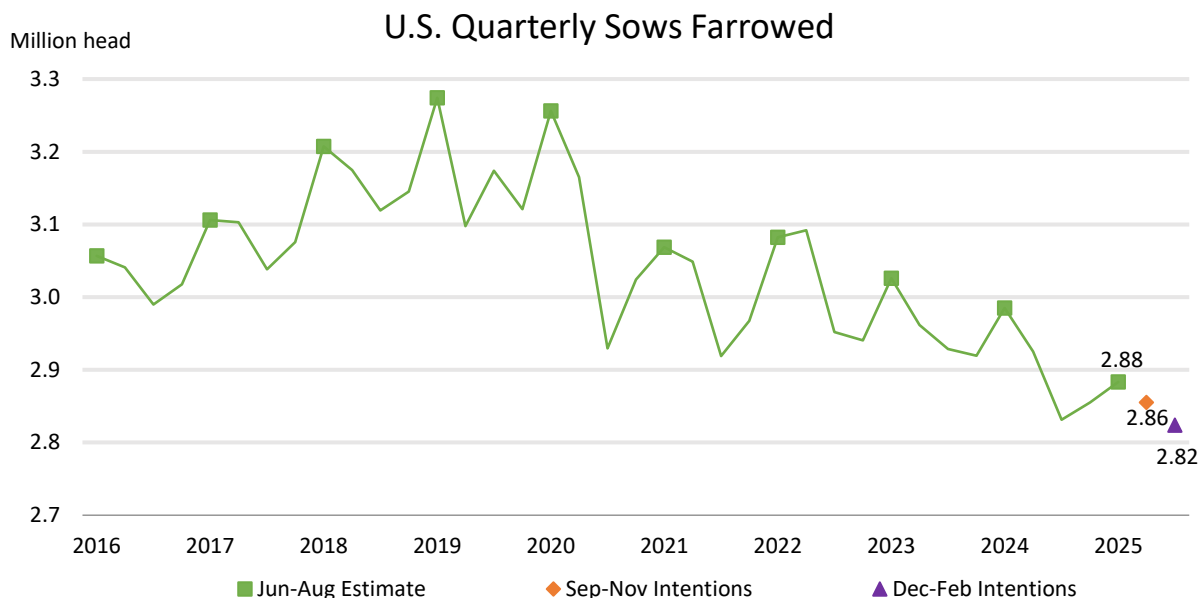




U.S. Hogs and Pigs September 1



	2024 (1,000 head)	2025	% Change from Previous Year	
Sows Farrowed	2,985	2,883	↓	3.4
Intentions				
Sep – Nov	2,925	2,855	↓	2.4
Dec – Feb	2,831	2,824	↓	0.3

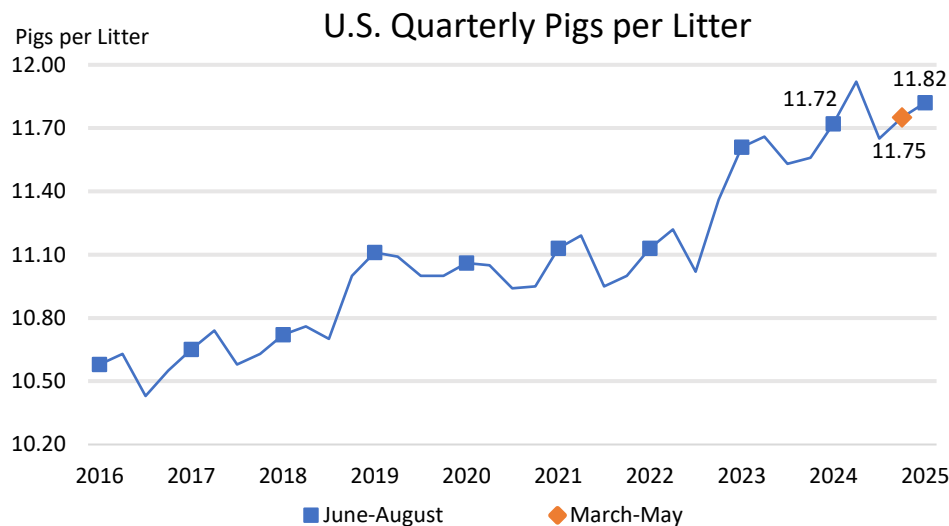




U.S. Hogs and Pigs September 1

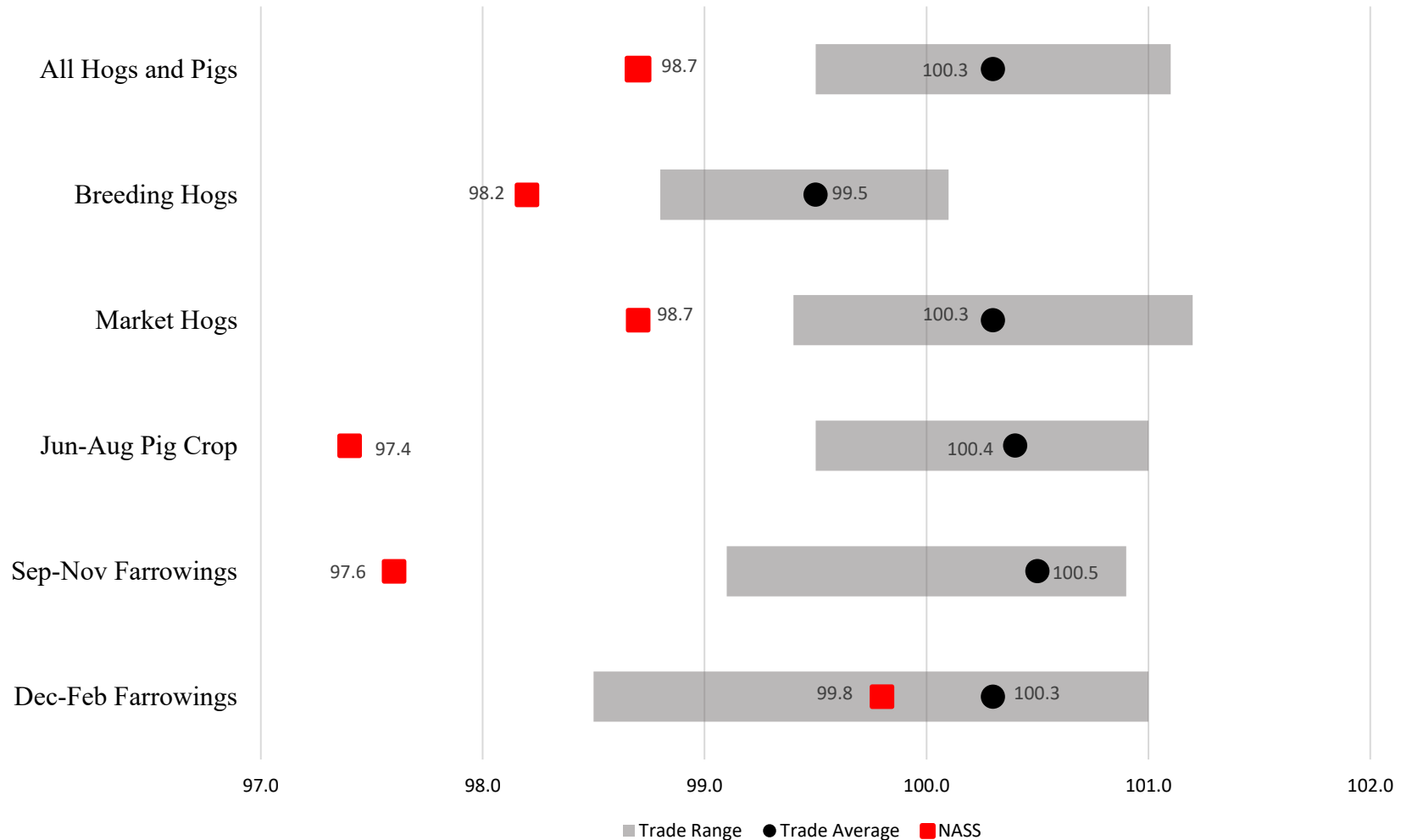


	2024 (1,000 head)	2025 (1,000 head)	% Change from Previous Year	
Pig Crop	34,981	34,078	↓	2.6
	(Number)			
Pigs per Litter	11.72	11.82	↑	0.9



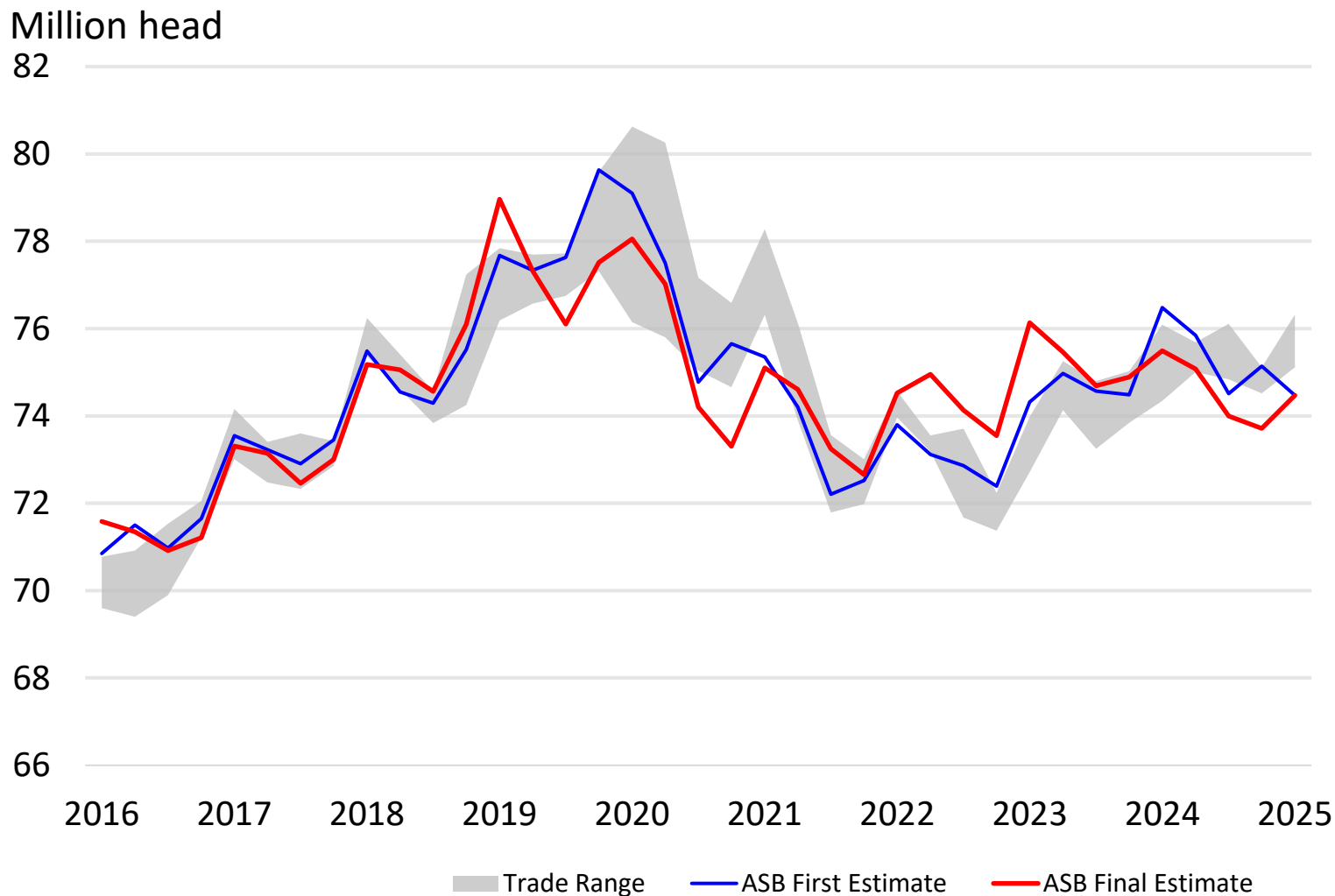


Trade Expectations Compared to NASS Estimates Percent of Previous Year





All Hogs and Pigs First Estimate vs Final Estimate





Breeding Herd Inventory Disposition and Utilization



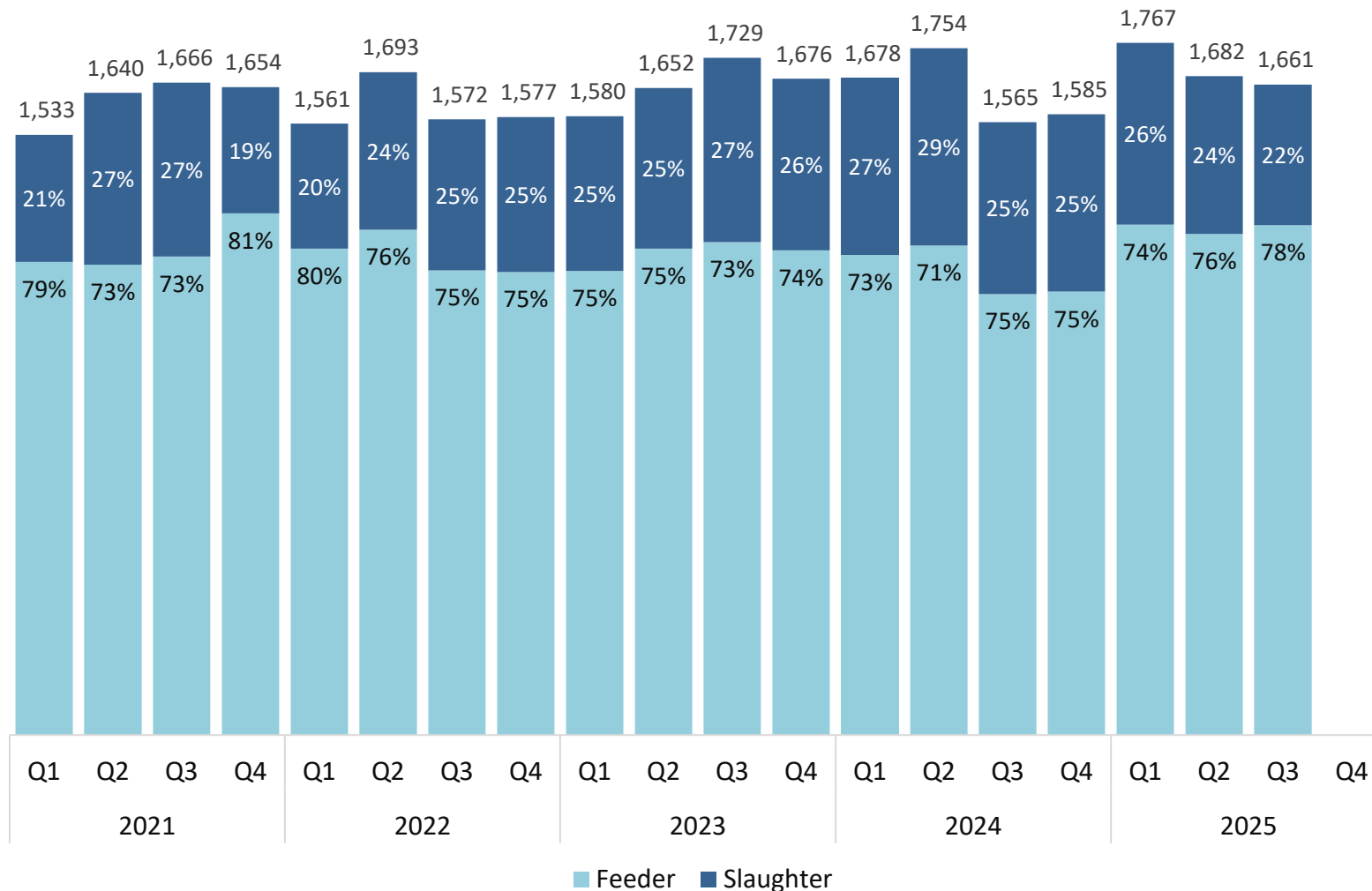
Year	Jun 1 Estimate (1,000 head)	Slaughter (1,000 head)	Additions (1,000 head)	Sep 1 Estimate (1,000 head)	Sow Utilization (Percent)
2016	5,979	802	839	6,016	51
2017	6,109	828	836	6,117	51
2018	6,320	850	840	6,310	51
2019	6,410	823	874	6,461	51
2020	6,476	921	828	6,383	50
2021	6,370	852	772	6,290	48
2022	6,218	858	892	6,252	50
2023	6,206	930	903	6,179	49
2024	6,008	838	874	6,044	50
2025	5,949	780	765	5,934	48



Canadian Imports by Quarter

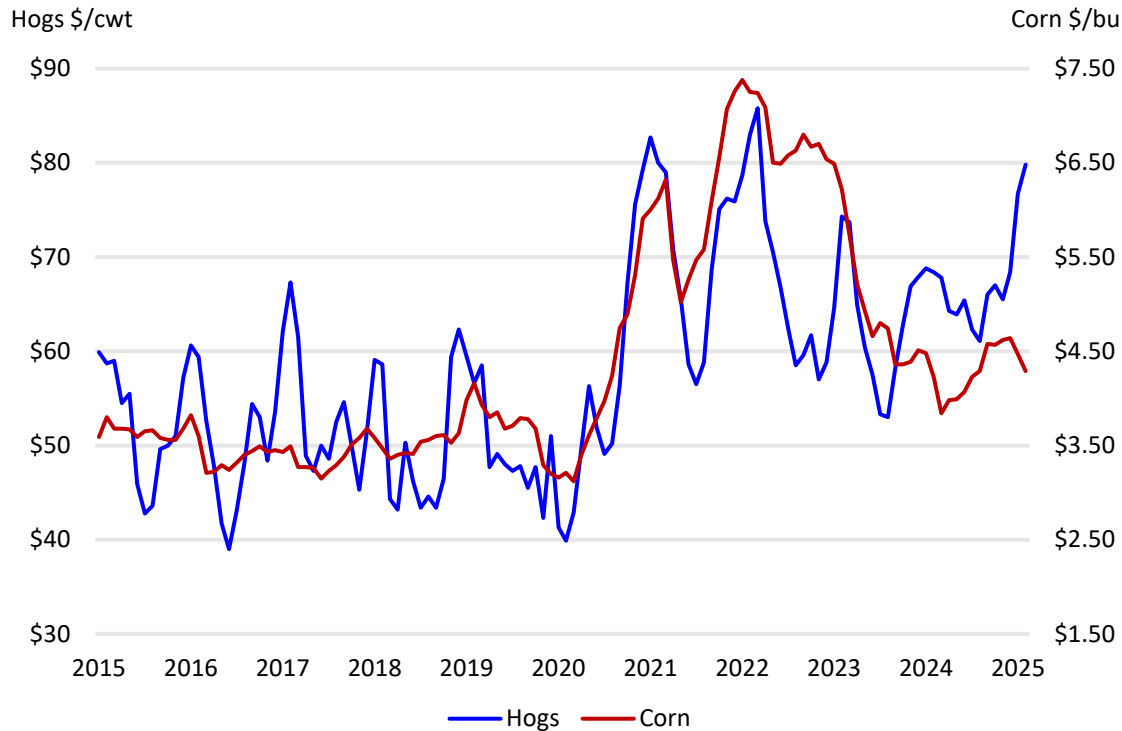
Feeder Pigs and Slaughter Hogs

(1,000 head)





U.S. Prices Received by Farmers for Hogs and Corn



	Hogs	Corn
Month	\$/cwt	\$/bu
February	66	4.58
March	67	4.57
April	65.5	4.62
May	68.4	4.64
June	76.7	4.47
July	79.8	4.29

	Hog to Corn
Month	Ratio
February	14.41
March	14.66
April	14.18
May	14.74
June	17.16
July	18.60



Upcoming Reports



September 30	Grain Stocks, Small Grains Summary, Agricultural Prices
October 1	Cotton Systems, Fats & Oils, Grain Crushing
October 3	Dairy Products
October 9	Crop Production
October 22	Milk Production
October 23	Livestock Slaughter
October 24	Cattle on Feed Cold Storage

<https://www.nass.usda.gov/Publications/index.php>



Data Users' Meeting



Fall 2025

USDA Data Users' Meeting

October 21

1 p.m. CT

West Des Moines, IA

Join in-person or virtually

www.nass.usda.gov/go/data_users



USDA Fall Data Users' Meeting

Join Us Online or in West Des Moines

October 21, 2025, 1:00pm CT

For more information and to register please go to

www.nass.usda.gov/go/data_users



All Reports Available At

www.nass.usda.gov

For Questions

(202) 692-0069

(800) 727-9540

nass@usda.gov