



# **September Crop Production**

## **Agricultural Statistics Board Briefing**

**Anthony Prillaman, Acting Chief  
Crops Branch**

September 12, 2025

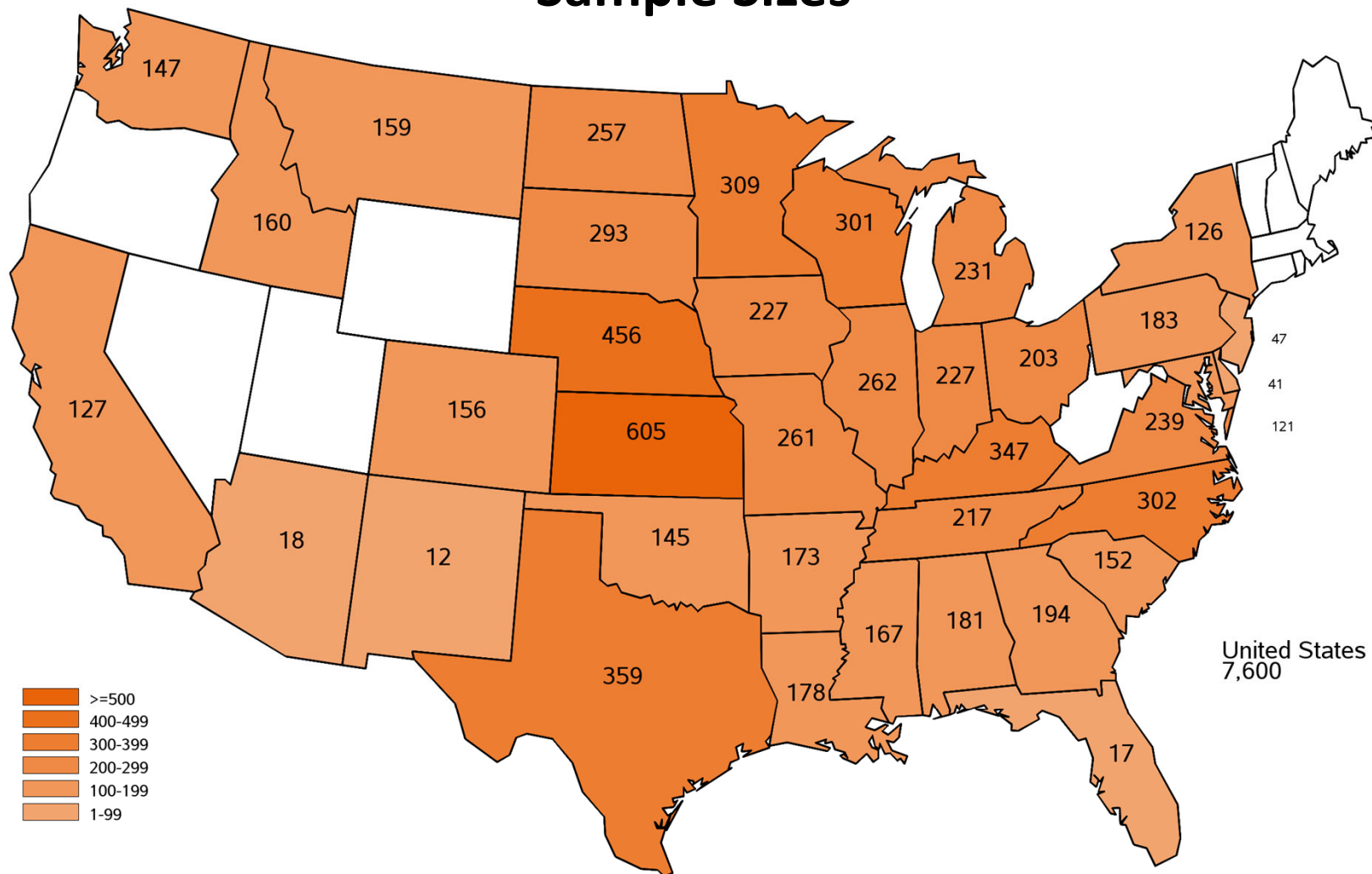


# Data Sources

<b>Operator Reported Survey</b>	<b>Ag Yield</b>	<b>Sample Size = 7,600</b>	<b>August 30 - September 9</b>
<b>Field Survey</b>	<b>Objective Yield Corn, Soybeans</b>	<b>Sample Size = 3,090</b>	<b>August 25 - September 1</b>
<b>Remotely Sensed (Satellite)</b>	<b>Time Series 375 Meter VIIRS Satellite Data</b>	<b>Focus Area Corn Belt</b>	<b>Imagery Through August 28</b>
<b>FSA Certified Acres</b>	<b>Farm Service Agency policy requires that producers participating in several programs submit an annual report regarding all cropland use on their farms.</b>		

# September 2025 Ag Yield Survey

## Sample Sizes





# Special Note

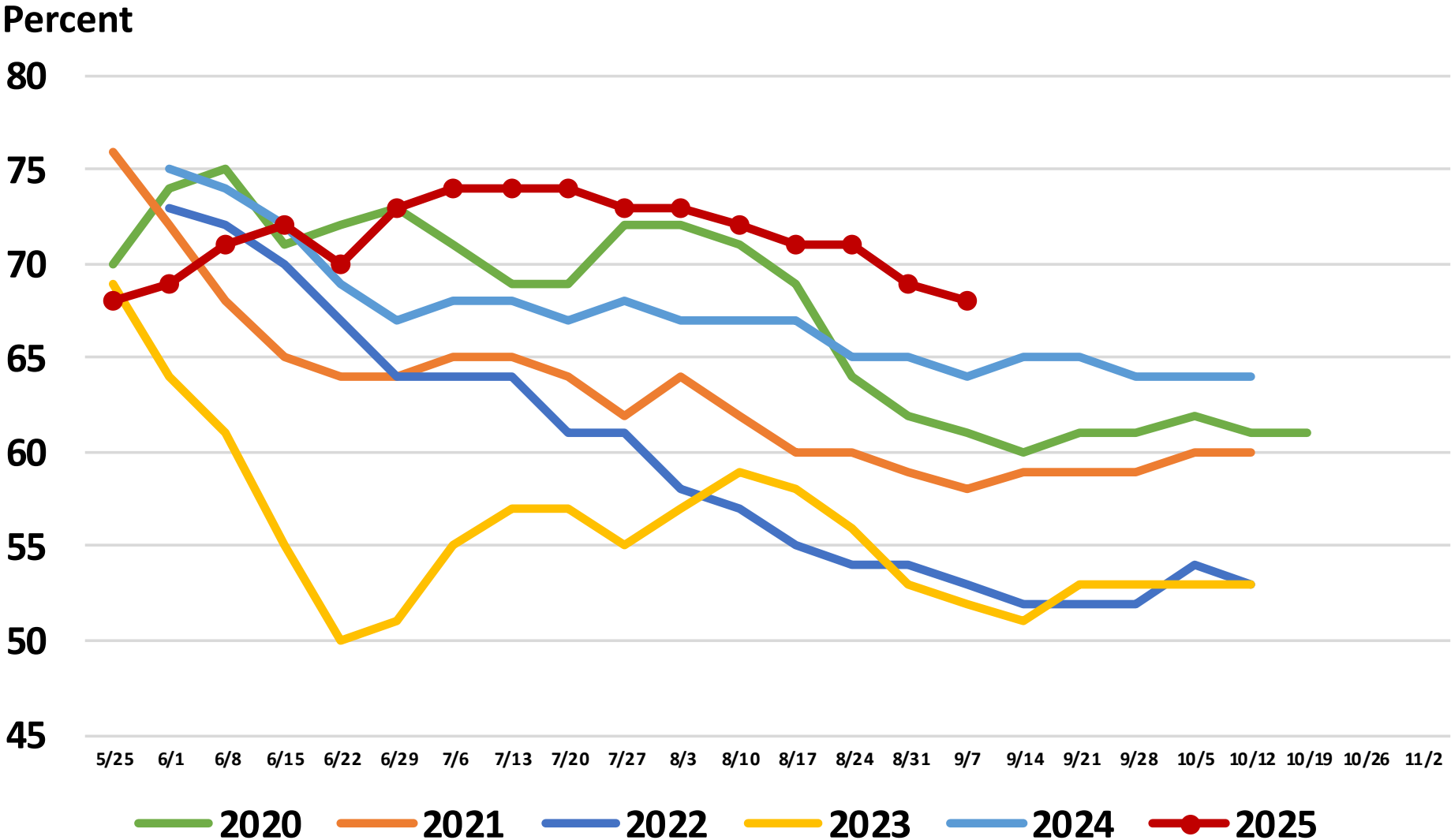


Each September, NASS has the opportunity to revise planted and harvested acreage estimates for chickpeas, corn, cotton, dry edible peas, lentils, peanuts, rice, sorghum, soybeans, and sugarbeets. Revisions are based on all available data, including the latest certified acreage data from the Farm Service Agency (FSA). All States in the estimating program for these crops were subject to review and updating.



# United States Corn Condition

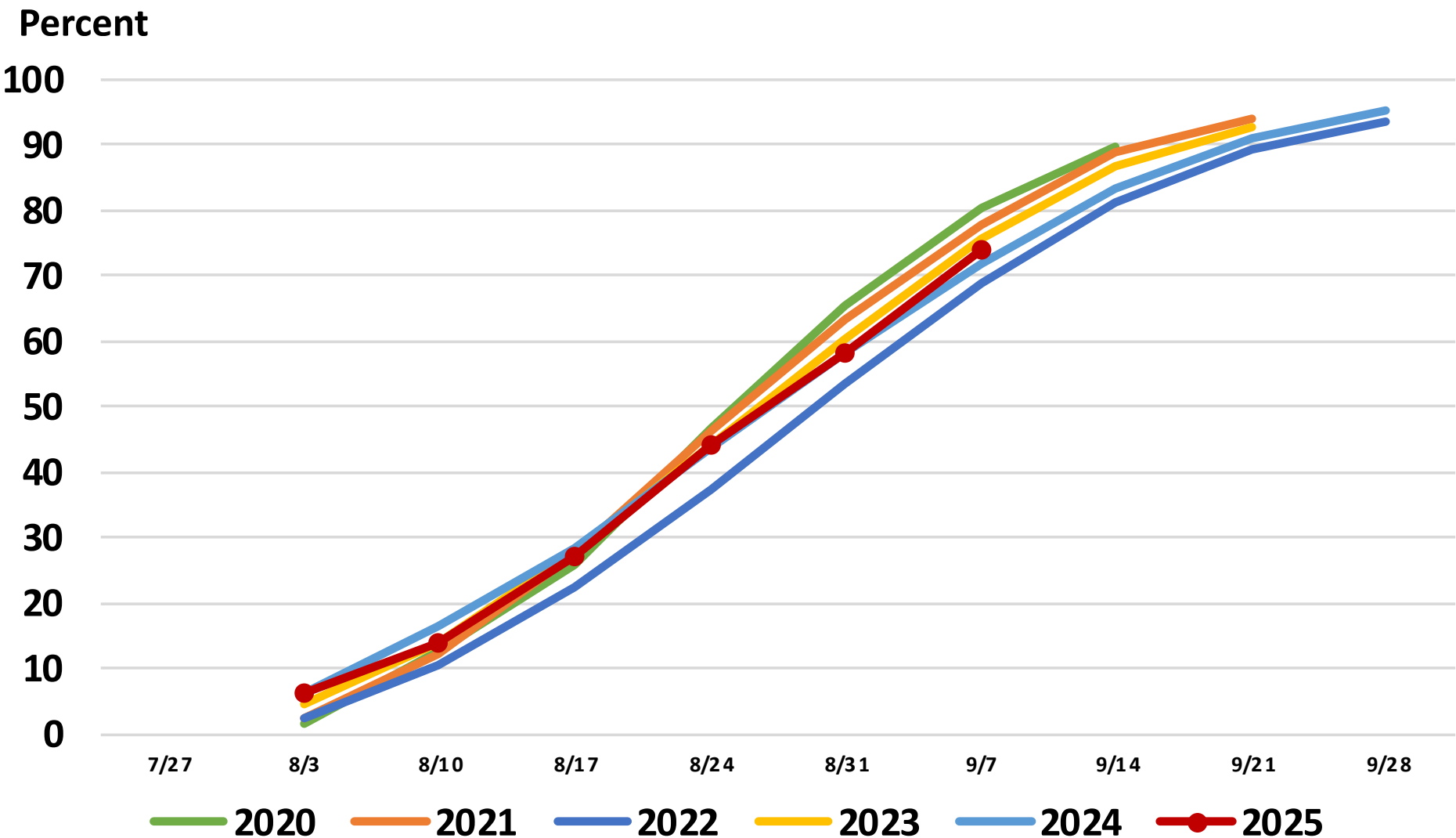
## Percent Rated Good to Excellent





# United States Corn Progress

## Percent Dented





# September 2025 Corn

## Acreage, Yield, and Production

	Planted (1,000 Acres)		Harvested (1,000 Acres)		Yield (Bushels/Acre)		Production (1,000 Bushels)	
<b>United States</b>	<b>98,728</b>		<b>90,047</b>		<b>186.7</b>		<b>16,814,371</b>	
% Change from Previous Estimate	↑	1.5	↑	1.5	↓	1.1	↑	0.4
% Change from Previous Season	↑	9.0	↑	8.6	↑	4.1	↑	13.1

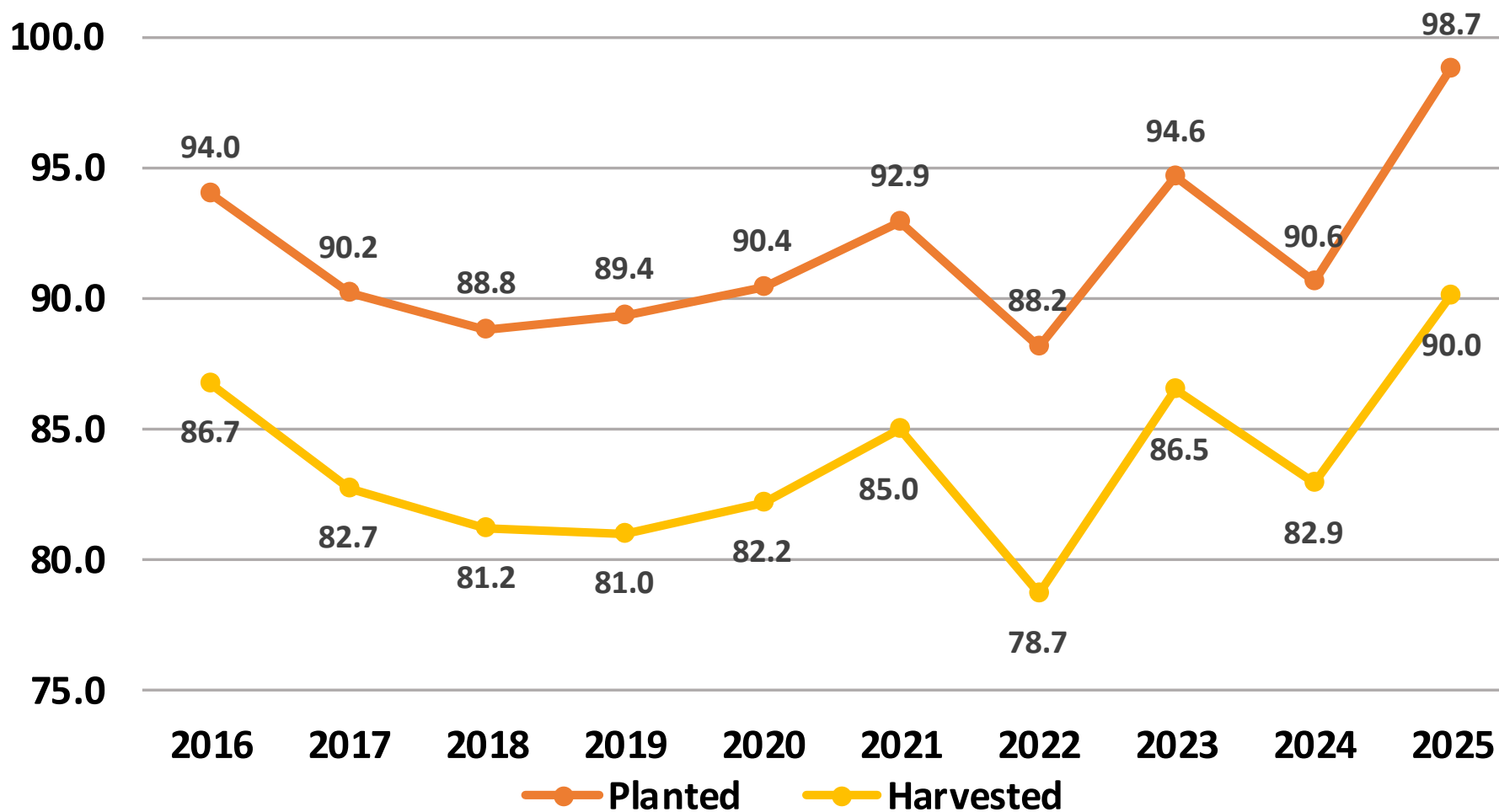
Top 5 States - By Production											
	Planted (1,000 Acres)		Harvested (1,000 Acres)		Yield (Bushels/Acre)		Production (1,000 Bushels)				
		% Δ PY		% Δ PY		% Δ PY				% Δ PY	
Iowa	13,550	↑ 5.0	13,000	↑ 4.4	219	↑ 3.8	2,847,000	↑	8.4		
Illinois	11,200	↑ 3.7	11,000	↑ 3.3	219	↑ 0.9	2,409,000	↑	4.2		
Nebraska	10,750	↑ 7.0	10,300	↑ 7.4	191	↑ 1.6	1,967,300	↑	9.1		
Minnesota	8,900	↑ 8.5	8,380	↑ 8.4	199	↑ 14.4	1,667,620	↑	24.0		
Indiana	5,400	↑ 3.8	5,250	↑ 4.0	205	↑ 3.5	1,076,250	↑	7.6		



# Corn Acres

## United States

Million Acres



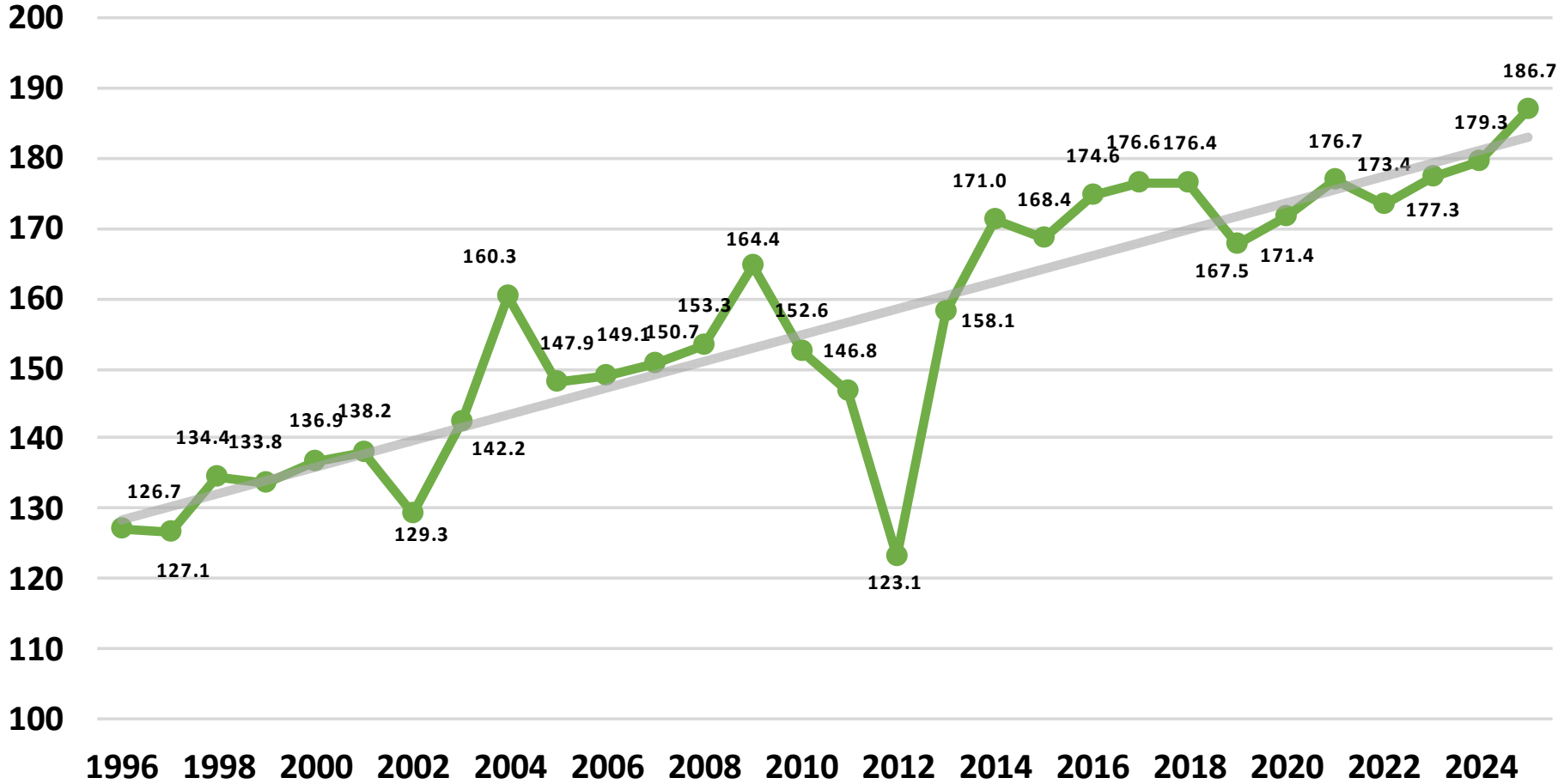




# Corn Yield

## United States

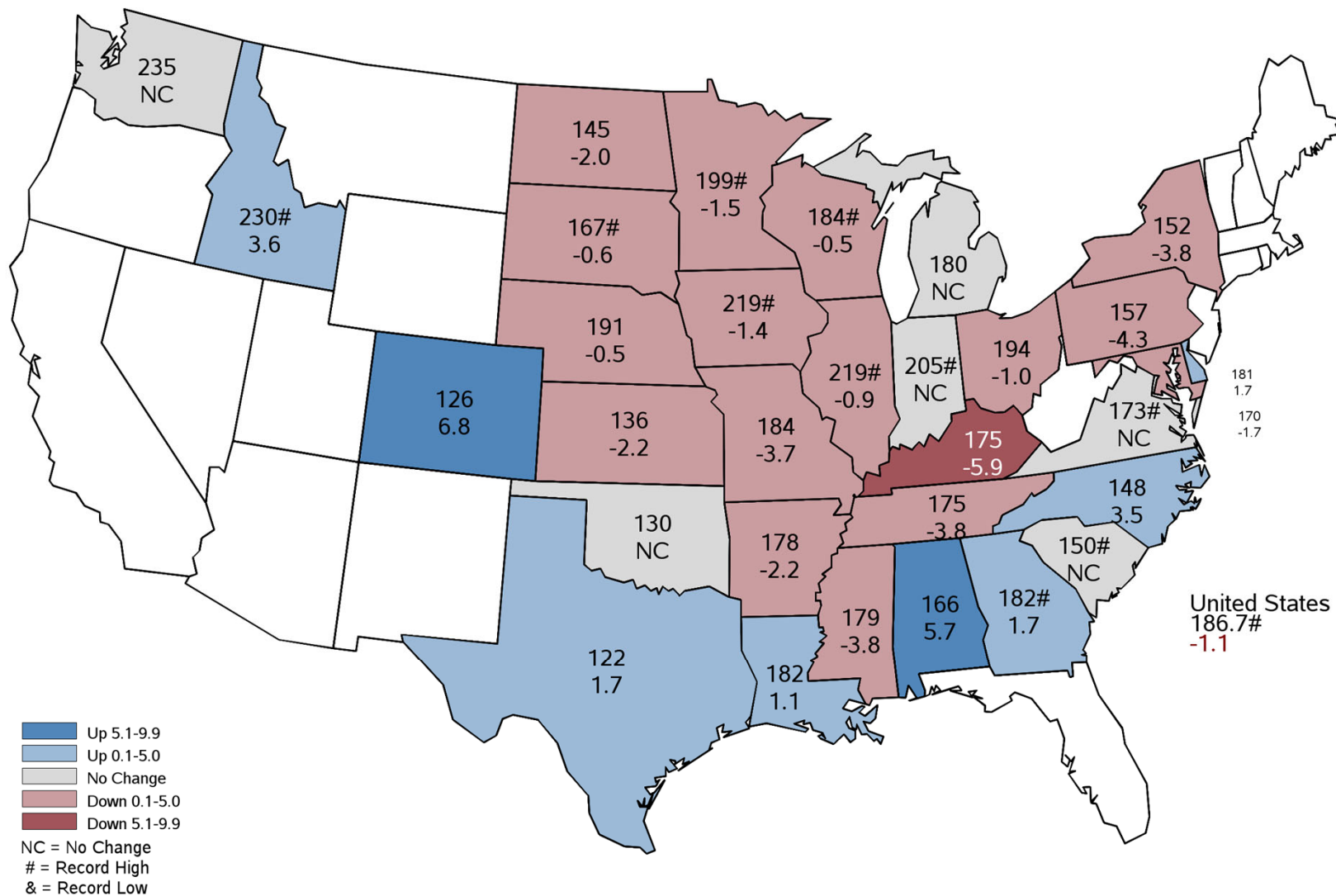
Bushels per Acre





# September 2025 Corn Yield

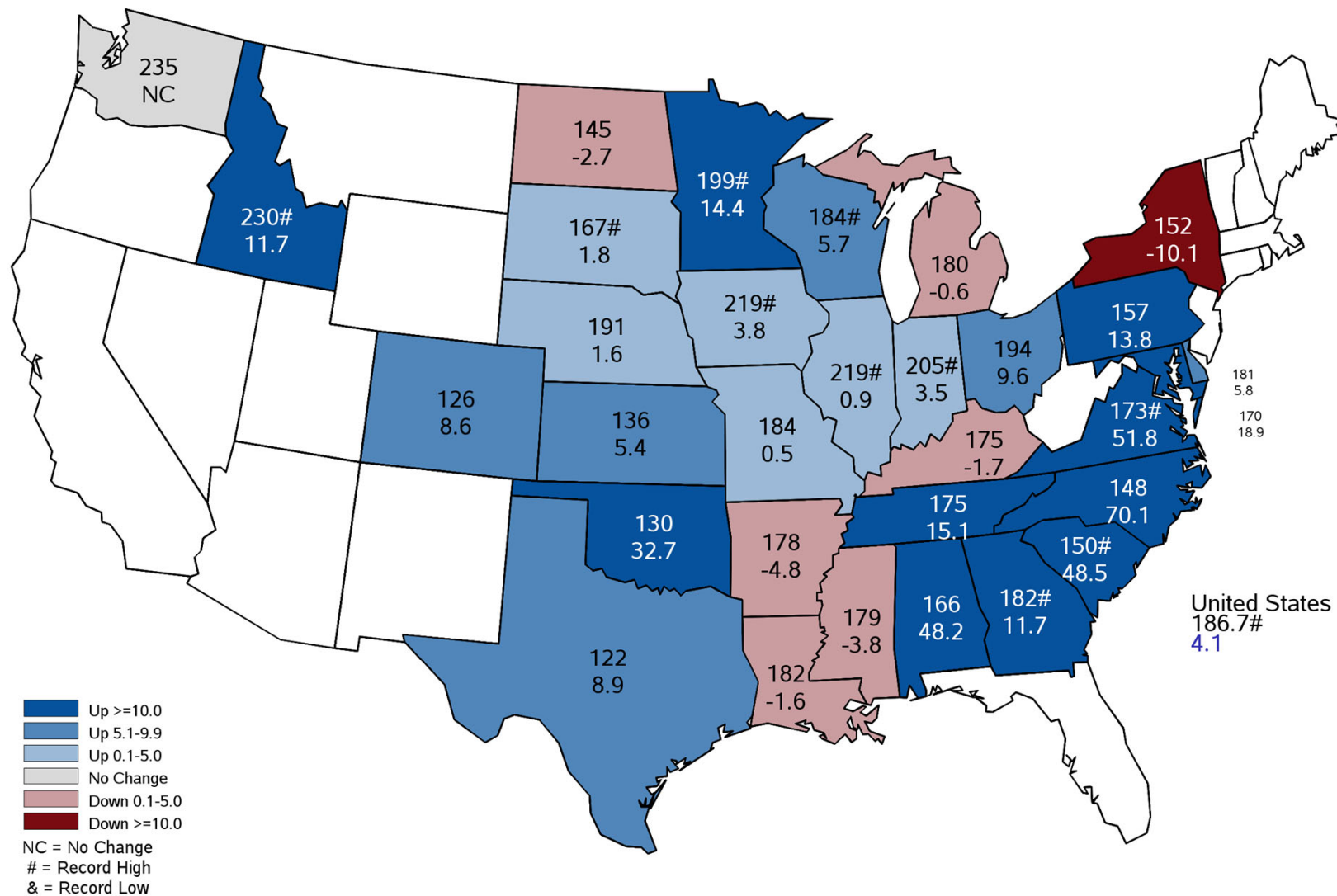
## Bushels and Percent Change from Previous Month





# September 2025 Corn Yield

## Bushels and Percent Change from Previous Year

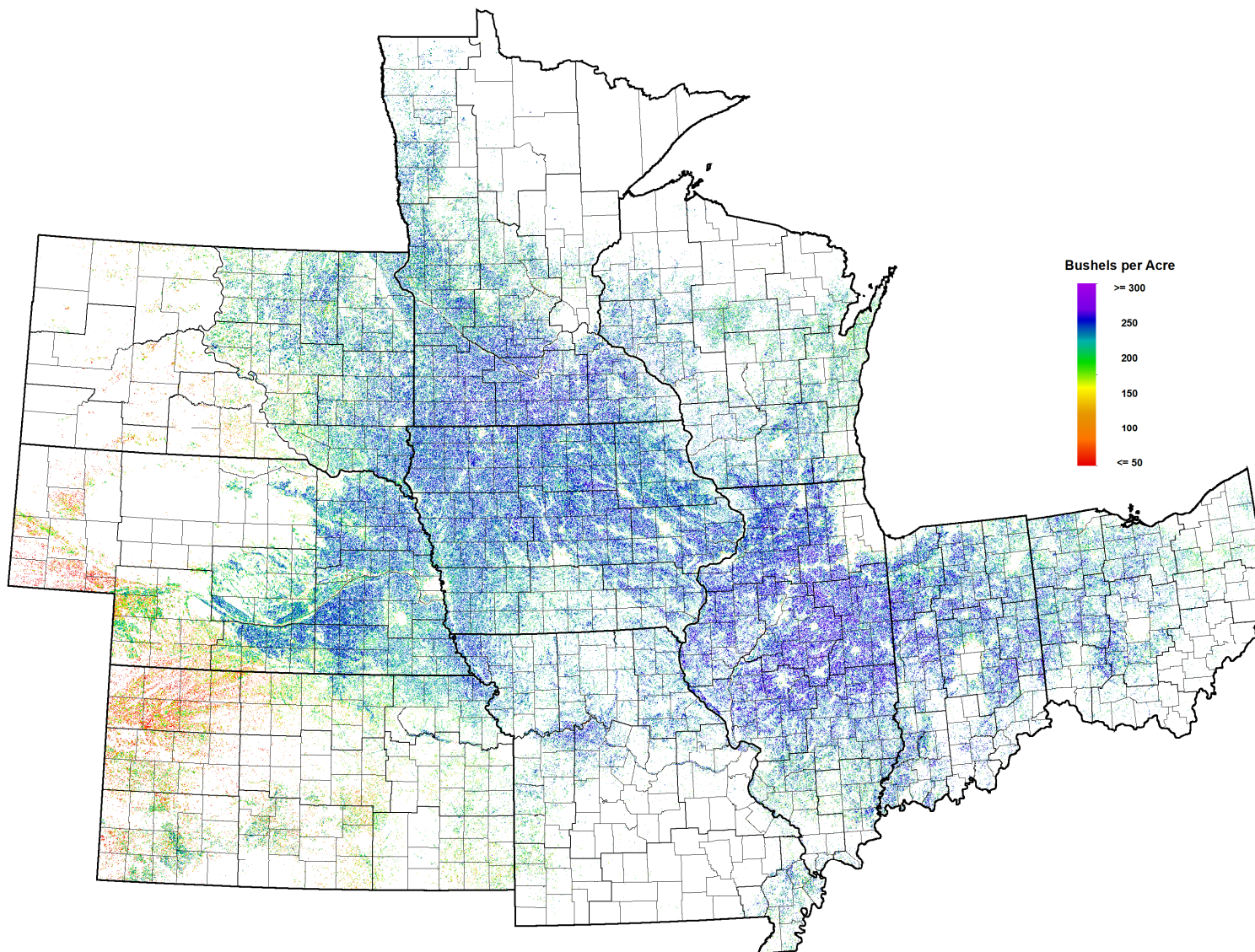






# September 2025 Corn

## NOAA Suomi NPP VIIRS Modeled Yield



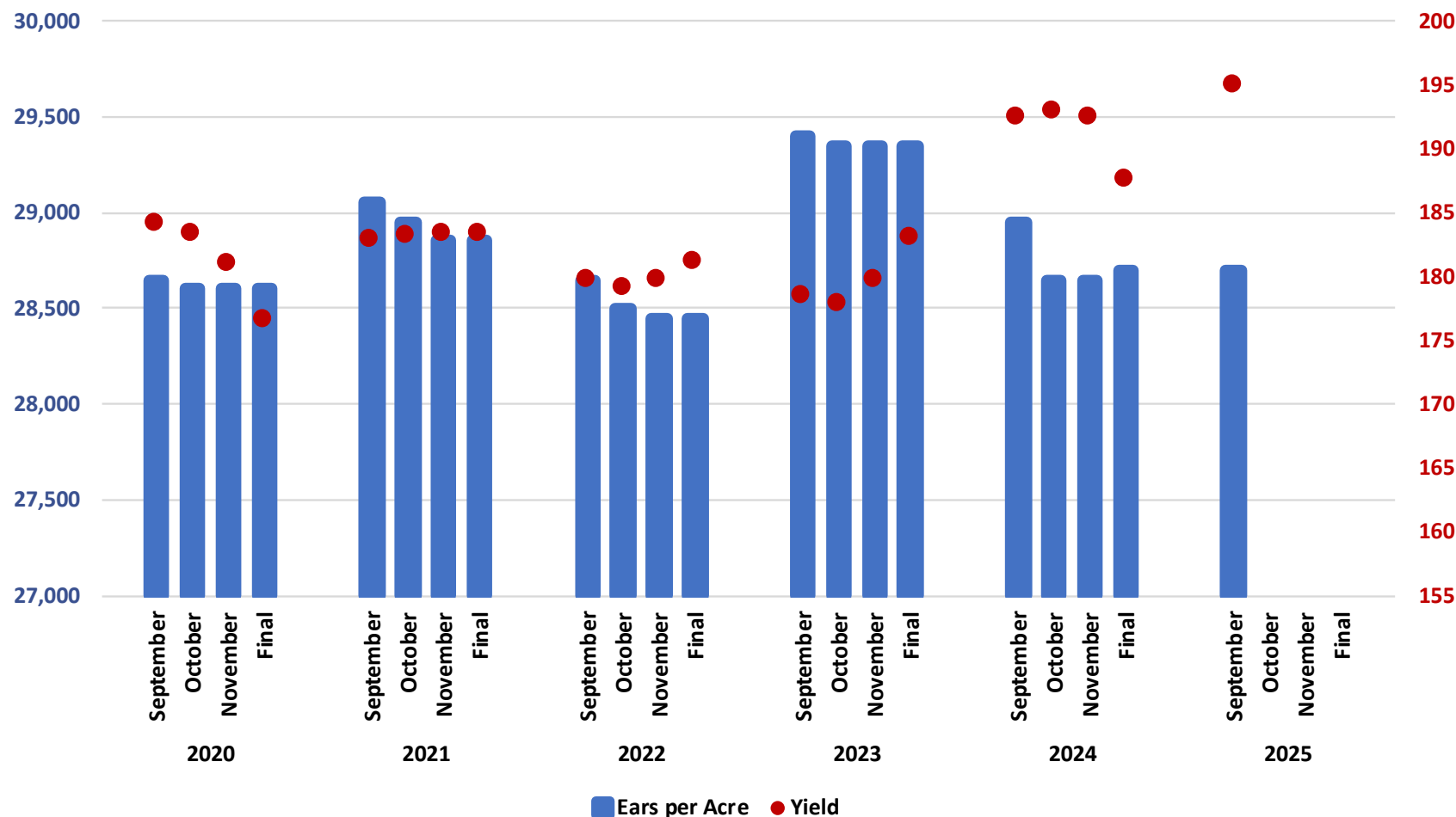


# September 2025 Corn Objective Yield

## Ears per Acre and Yield for 10 State Region

Ears per Acre

Bushels per Acre

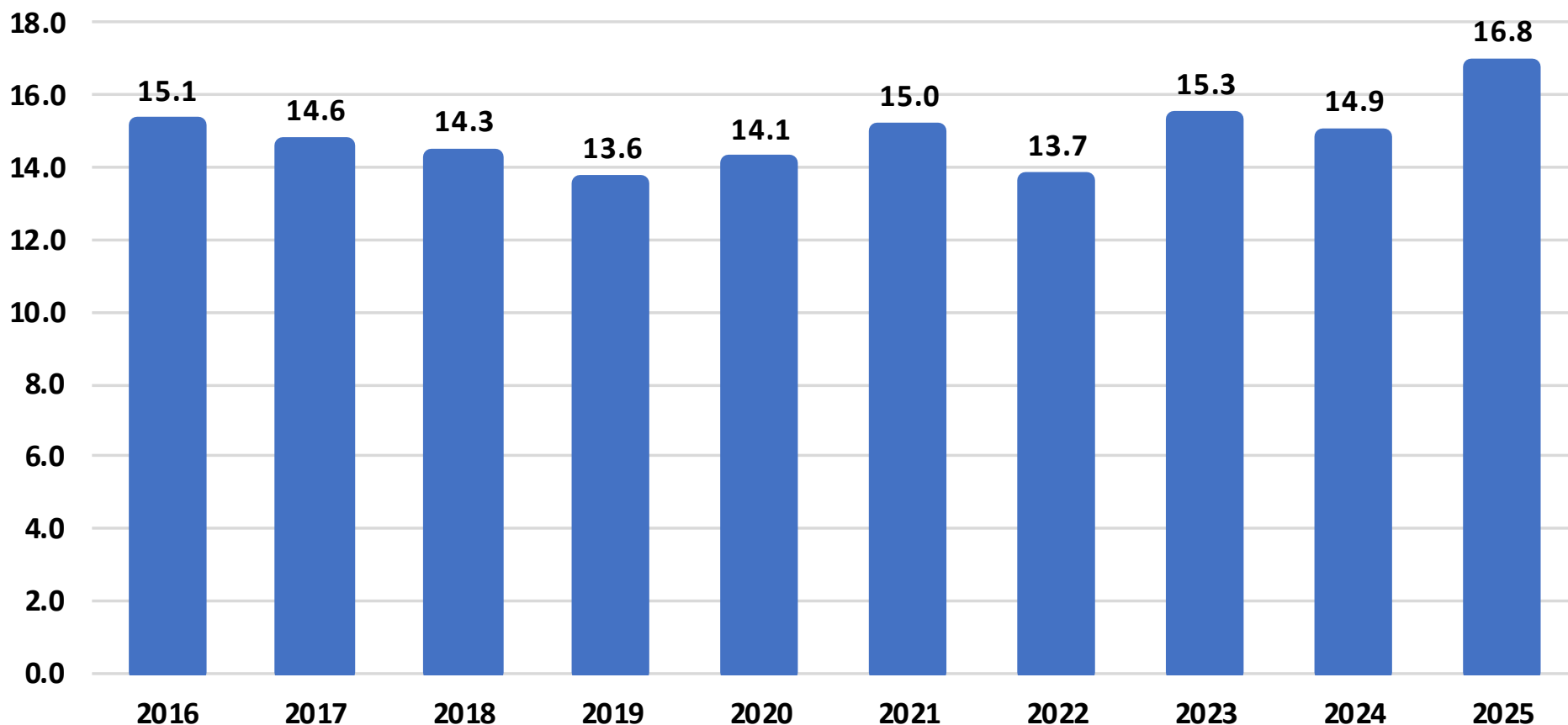




# Corn Production

## United States

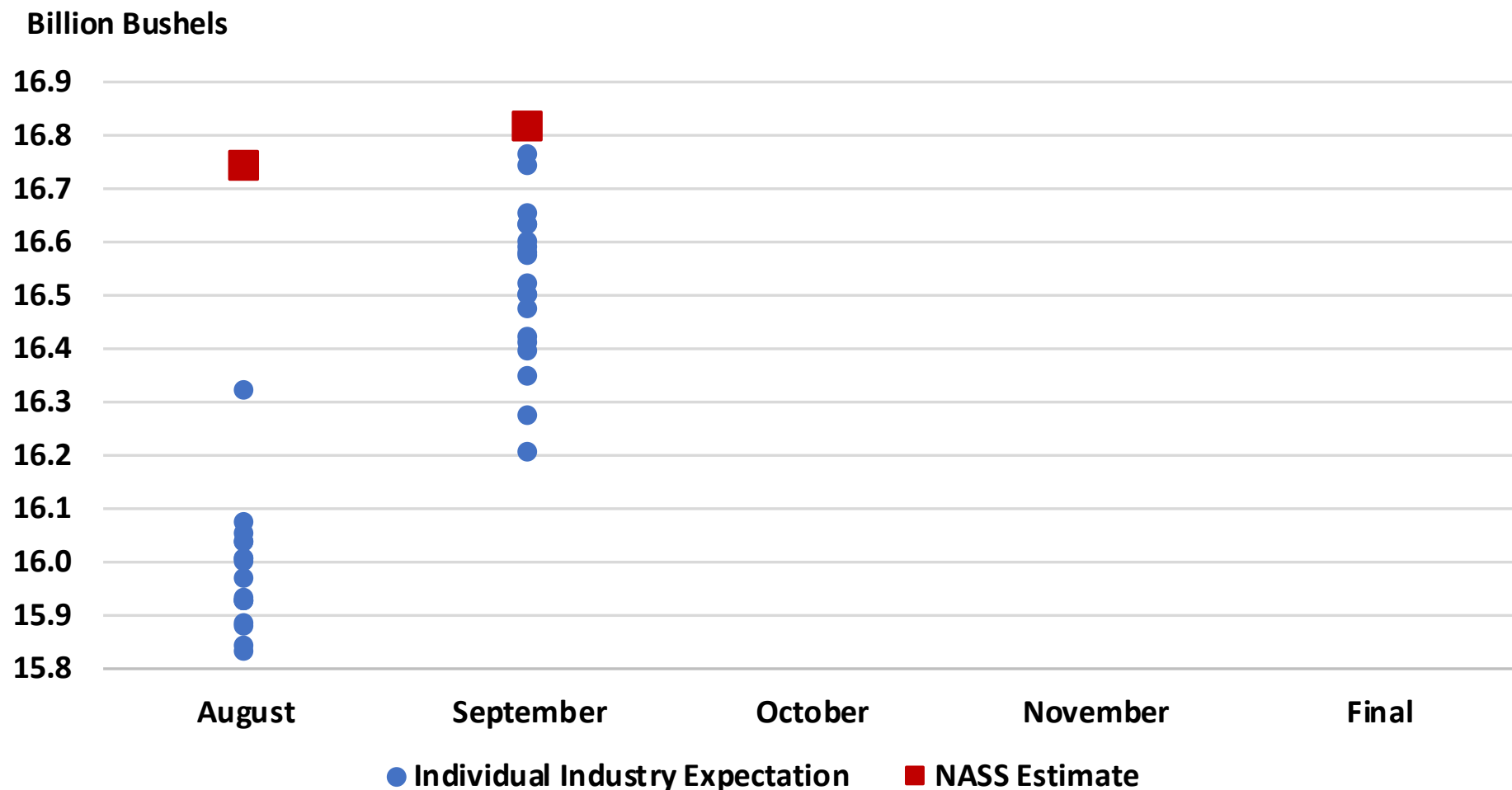
Billion Bushels





# 2025 U.S. Corn Production

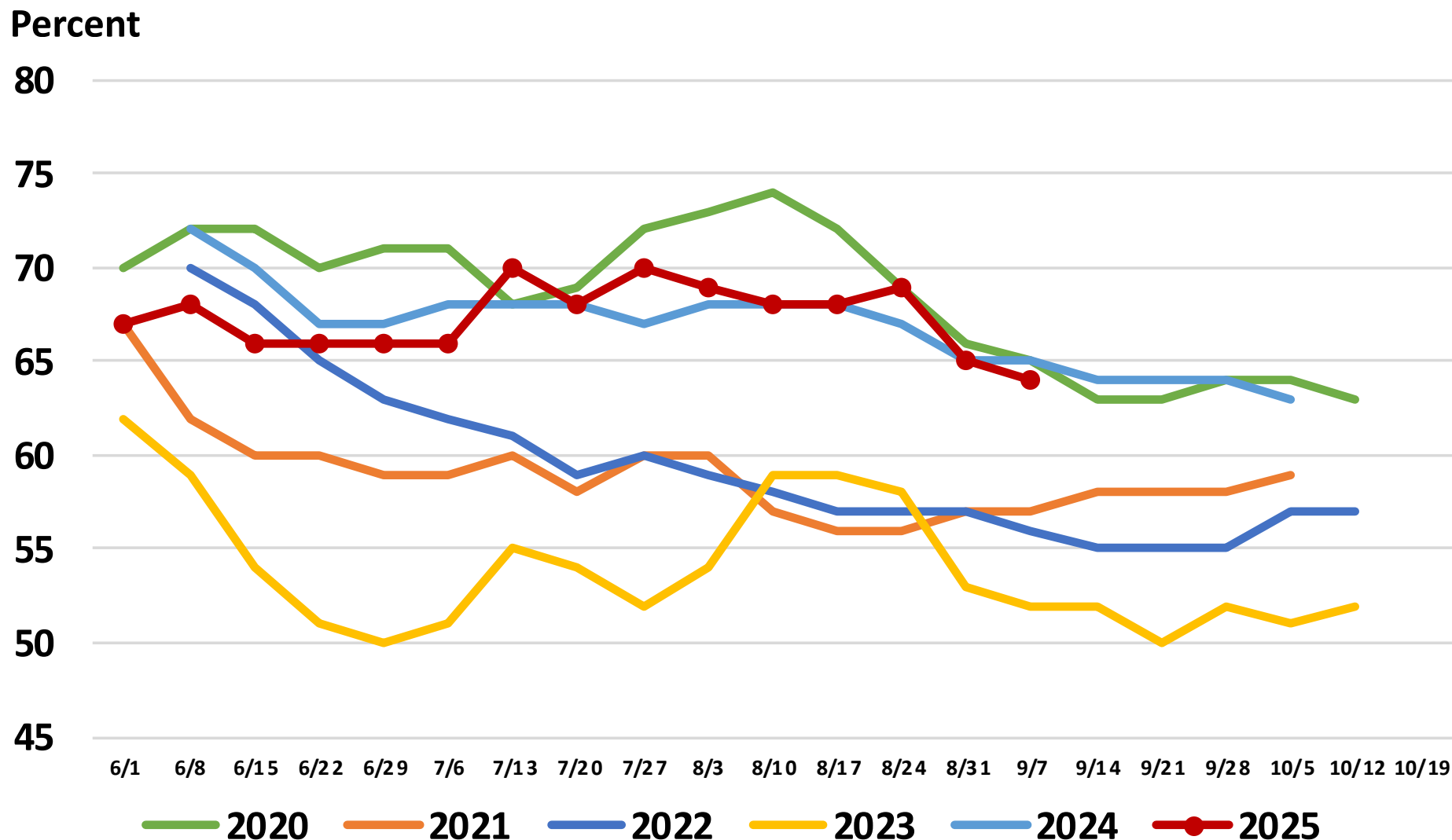
## Industry Expectations vs NASS





# United States Soybean Condition

## Percent Rated Good to Excellent

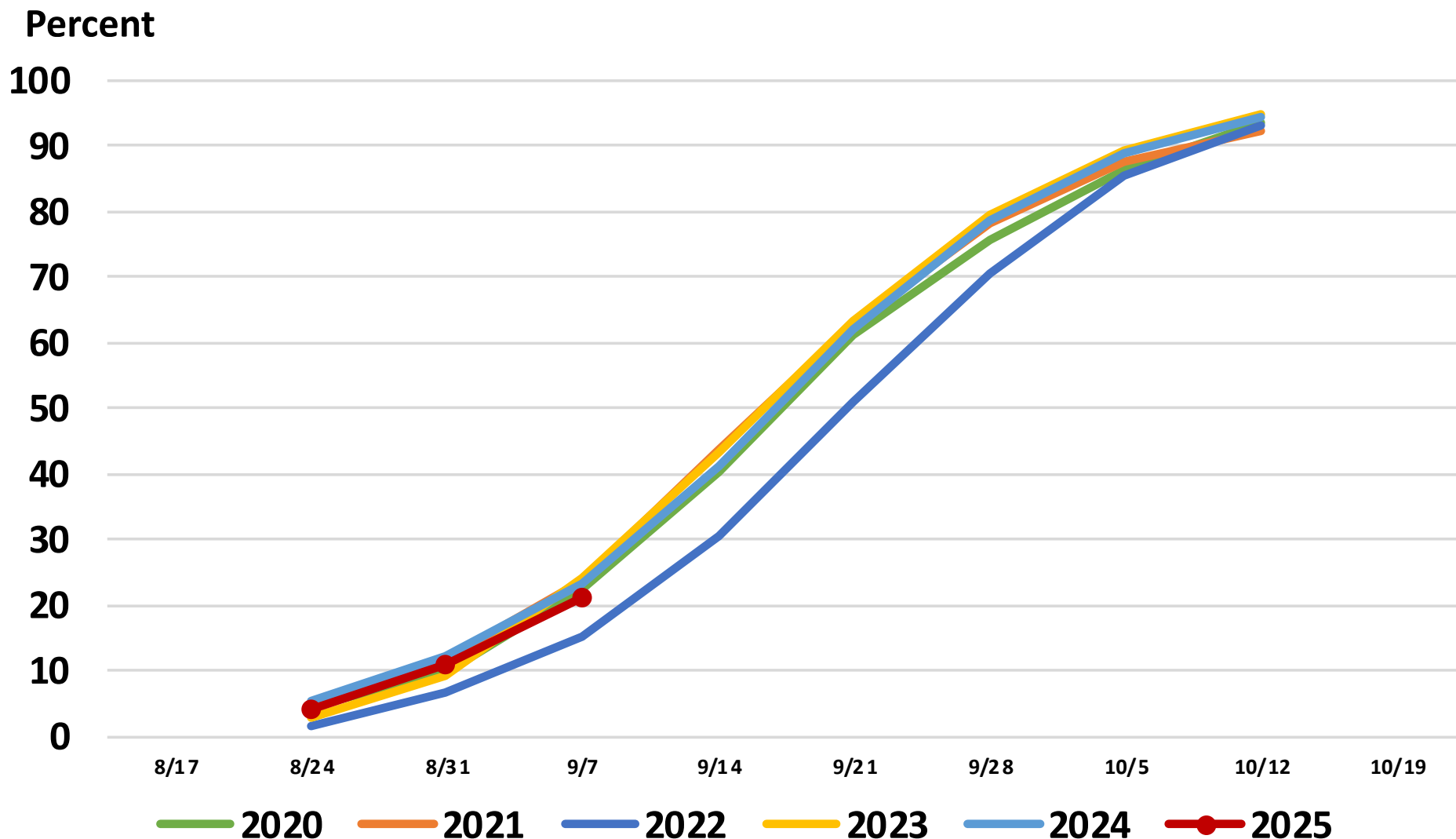






# United States Soybean Progress

## Percent Dropping Leaves





# September 2025 Soybeans

## Acreage, Yield, and Production

	Planted (1,000 Acres)	Harvested (1,000 Acres)	Yield (Bushels/Acre)	Production (1,000 Bushels)
<b>United States</b>	<b>81,135</b>	<b>80,313</b>	<b>53.5</b>	<b>4,300,670</b>
% Change from Previous Estimate	↑ 0.3	↑ 0.3	↓ 0.2	↑ 0.2
% Change from Previous Season	↓ 6.8	↓ 6.7	↑ 5.5	↓ 1.5

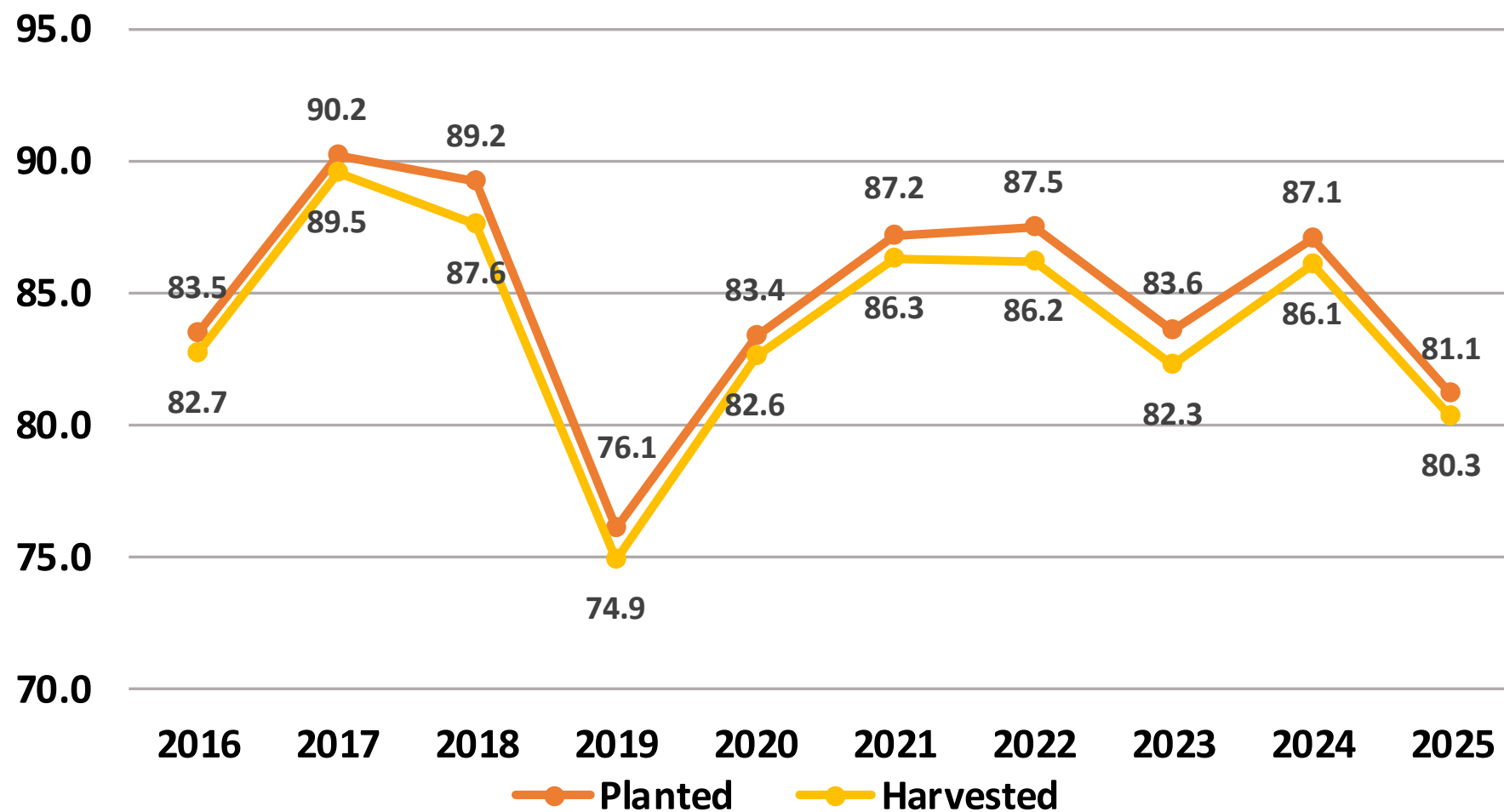
Top 5 States - By Production											
	Planted (1,000 Acres)		Harvested (1,000 Acres)		Yield (Bushels/Acre)		Production (1,000 Bushels)				
		% Δ PY		% Δ PY		% Δ PY		% Δ PY		% Δ PY	
Illinois	10,250	↓ 5.1	10,200	↓ 5.1	65.0	↑ 1.6	663,000	↓ 3.6			
Iowa	9,450	↓ 6.0	9,380	↓ 5.8	65.0	↑ 8.3	609,700	↑ 2.0			
Minnesota	7,150	↓ 3.4	7,080	↓ 3.3	53.0	↑ 17.8	375,240	↑ 13.9			
Indiana	5,450	↓ 6.0	5,430	↓ 6.1	61.0	↑ 3.4	331,230	↓ 2.9			
Nebraska	4,850	↓ 8.5	4,800	↓ 8.4	61.0	↑ 6.1	292,800	↓ 2.8			



# Soybean Acres

## United States

Million Acres

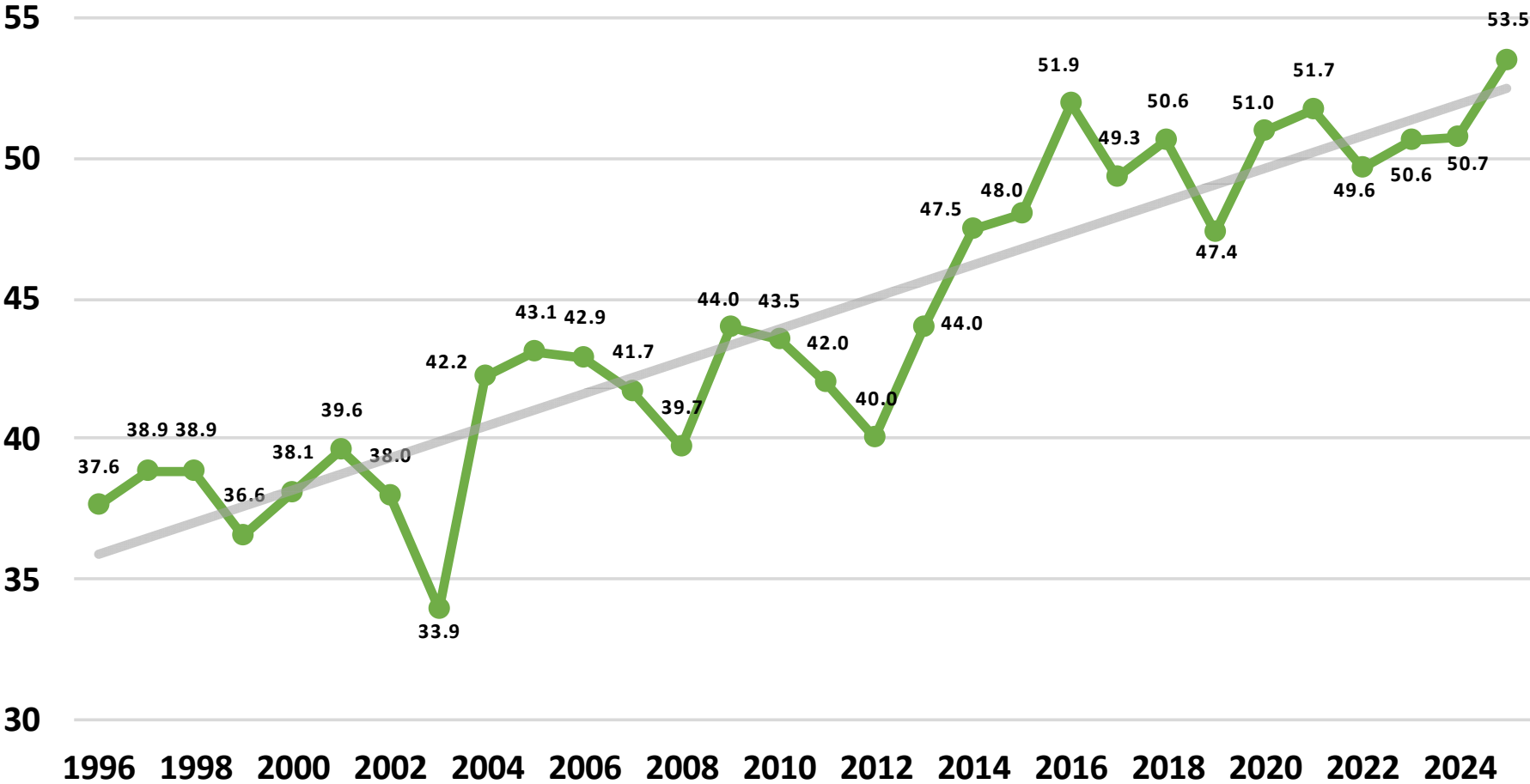




# Soybean Yield

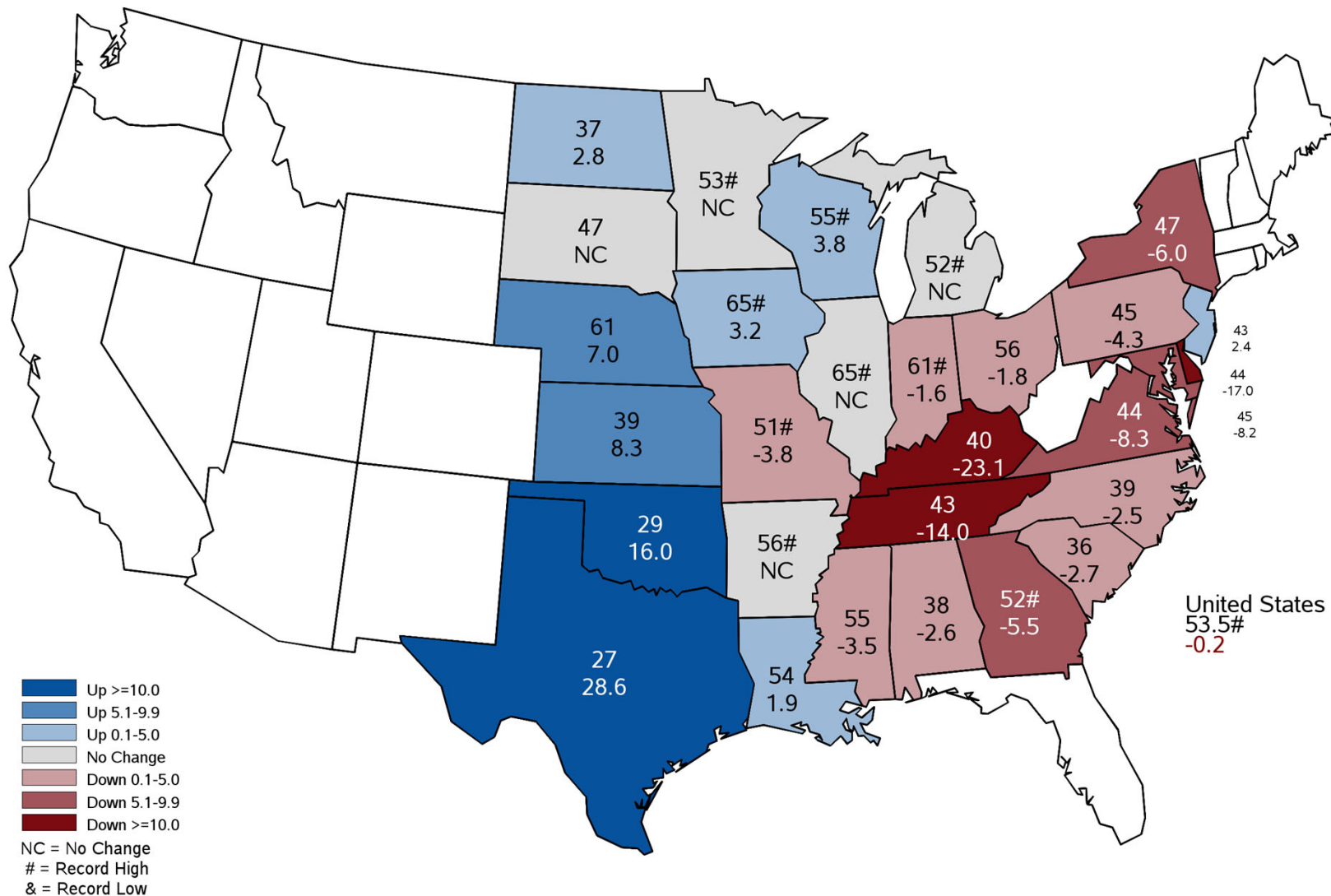
## United States

Bushels per Acre



# September 2025 Soybean Yield

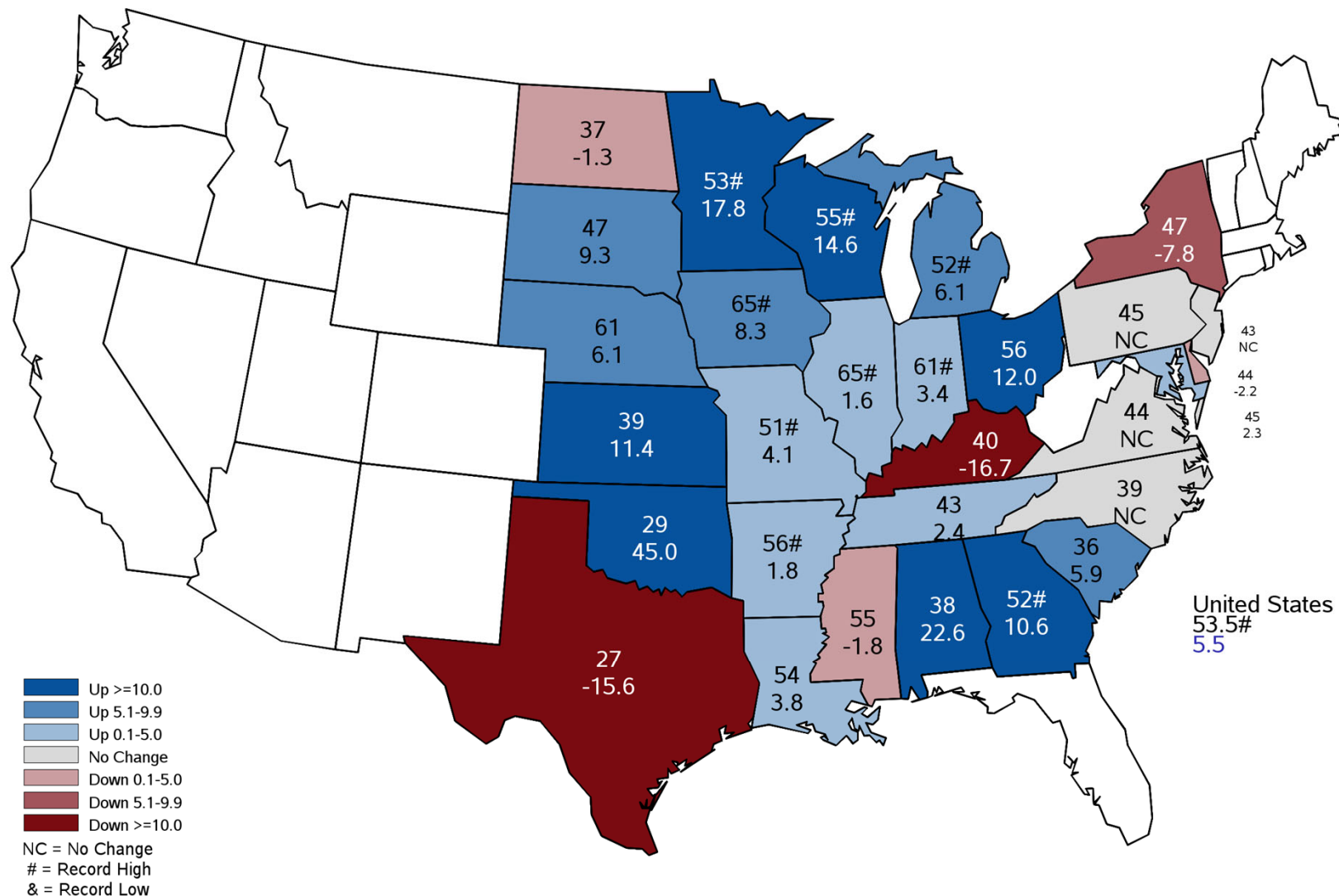
## Bushels and Percent Change from Previous Month





# September 2025 Soybean Yield

## Bushels and Percent Change from Previous Year

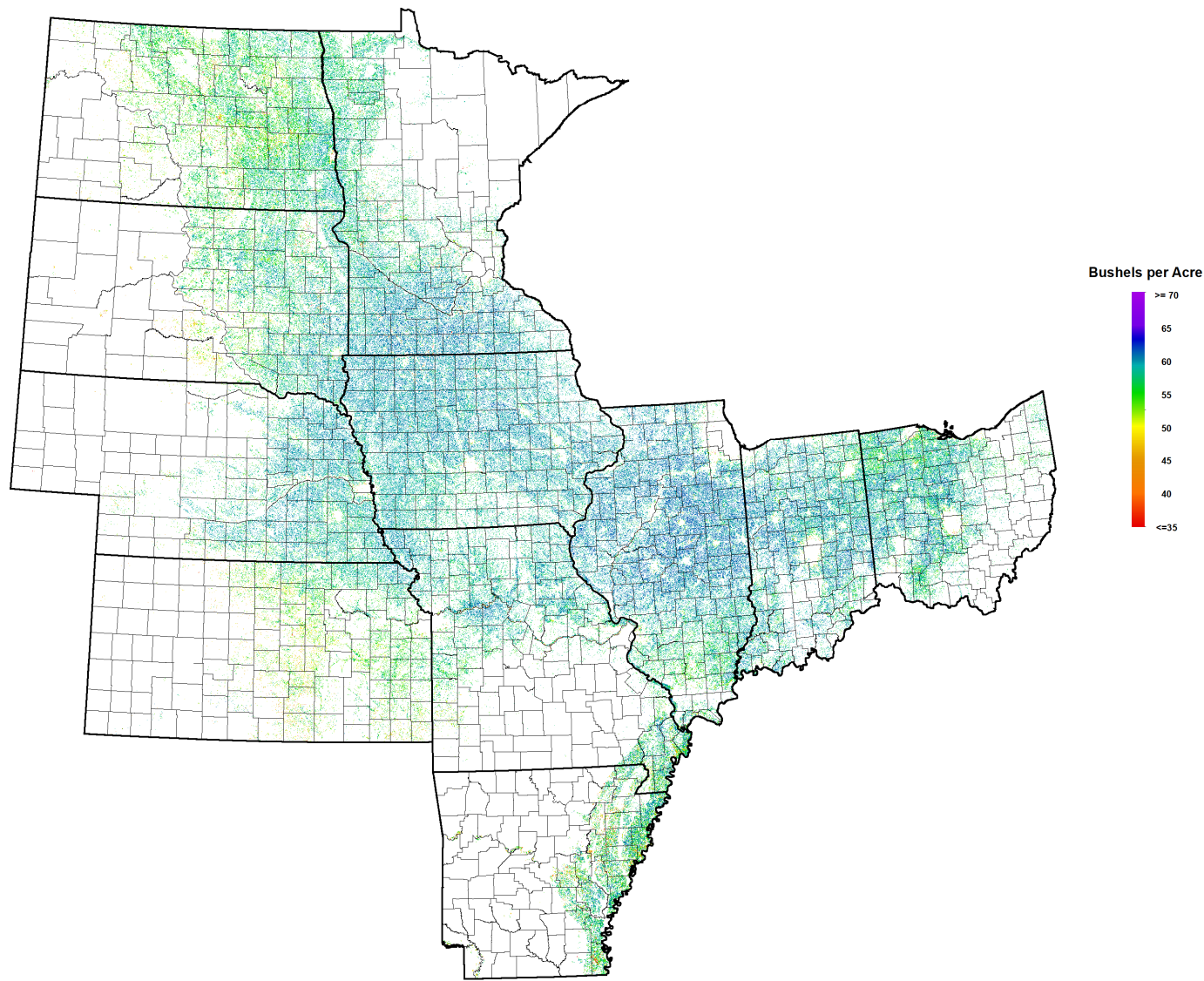






# September 2025 Soybeans

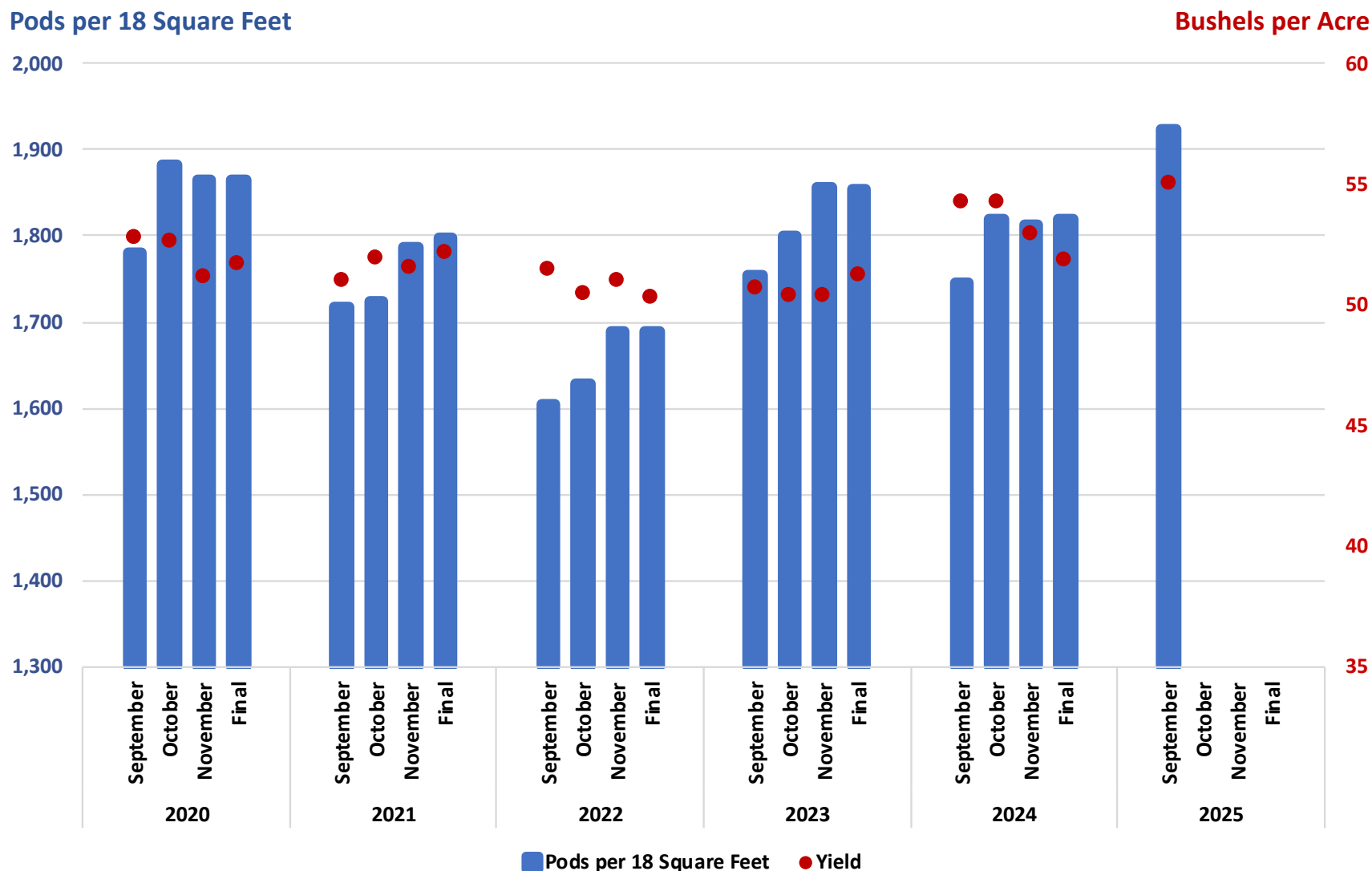
## NOAA Suomi NPP VIIRS Modeled Yield





# September 2025 Soybean Objective Yield

## Pods per 18 Square Feet and Yield for 11 State Region



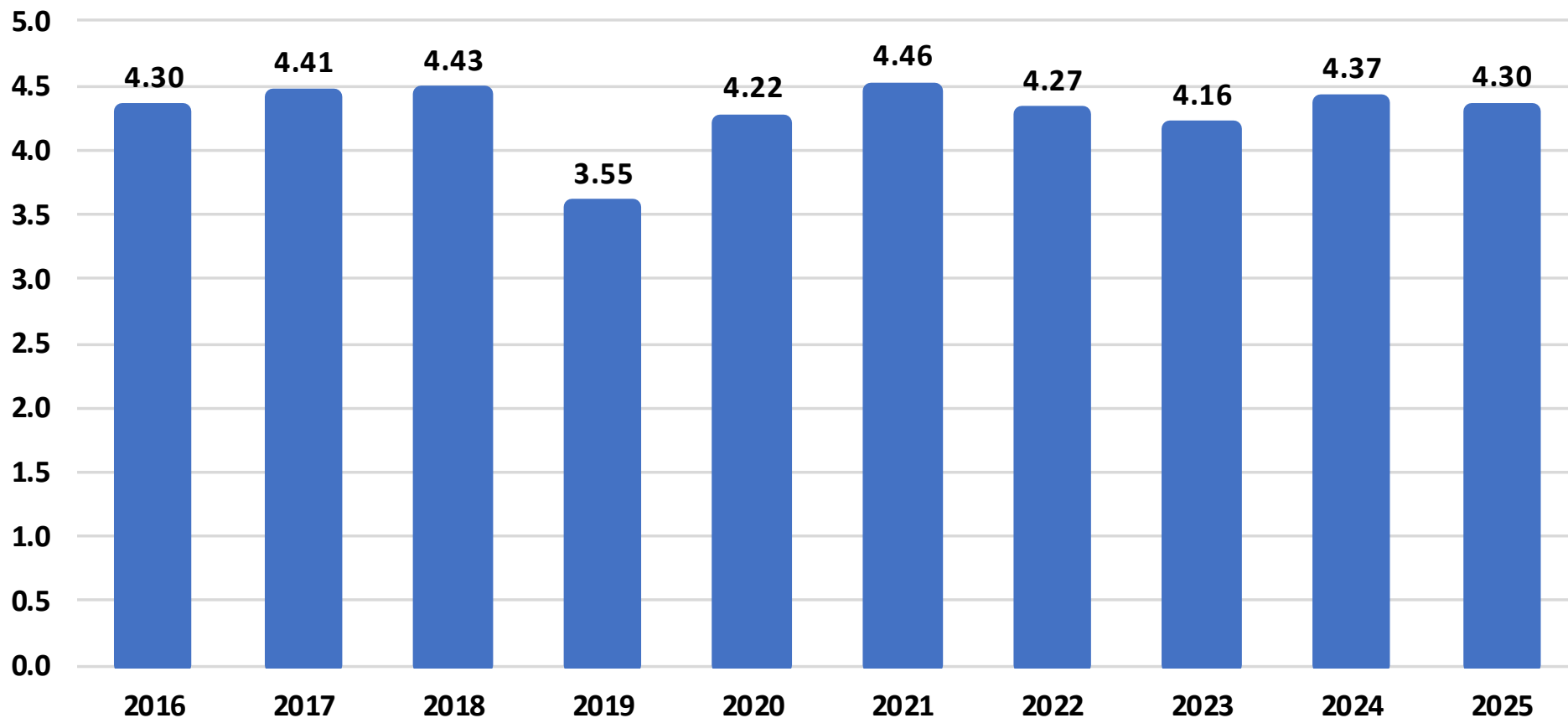




# Soybean Production

## United States

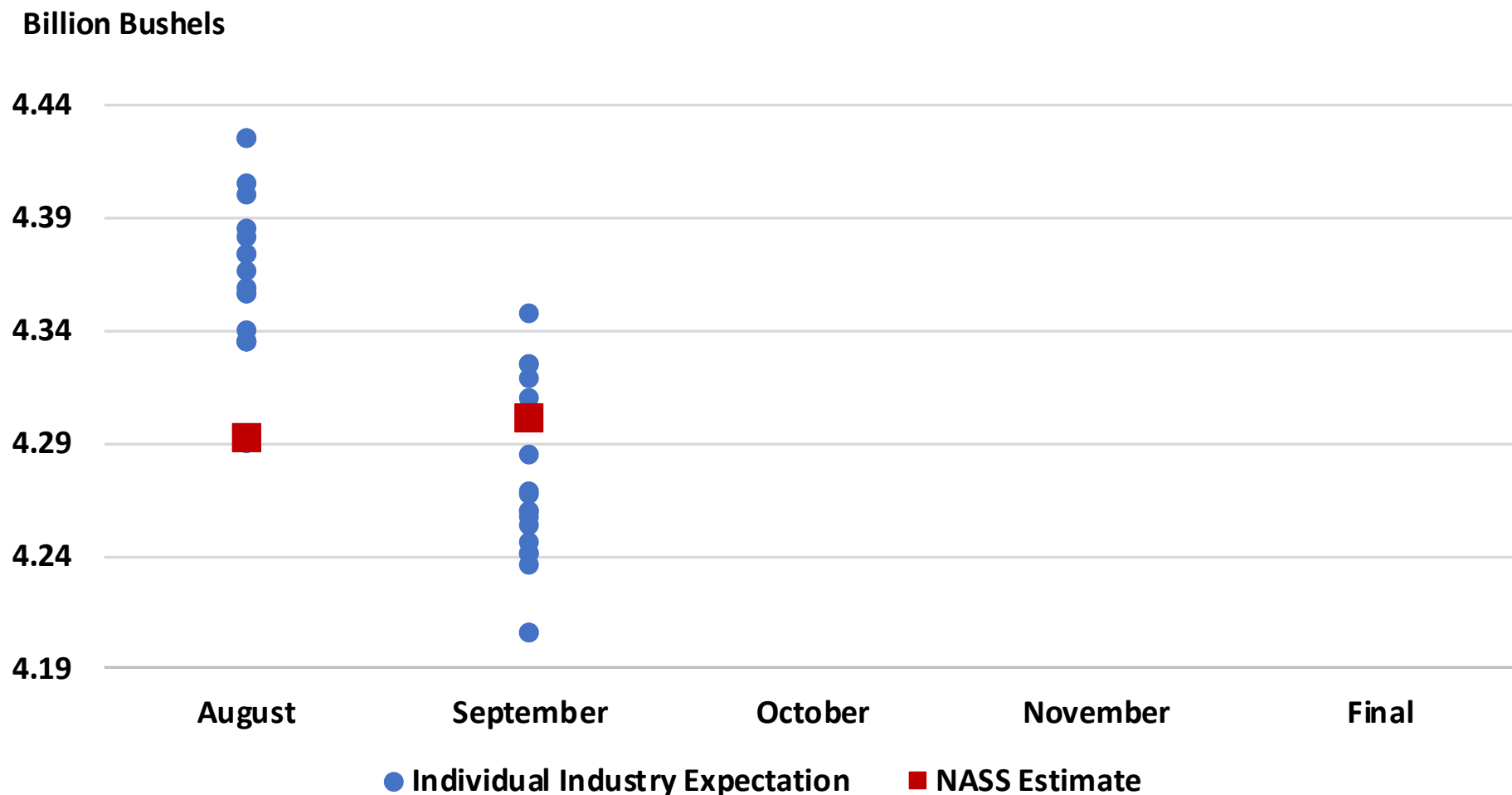
Billion Bushels





# 2025 U.S. Soybean Production

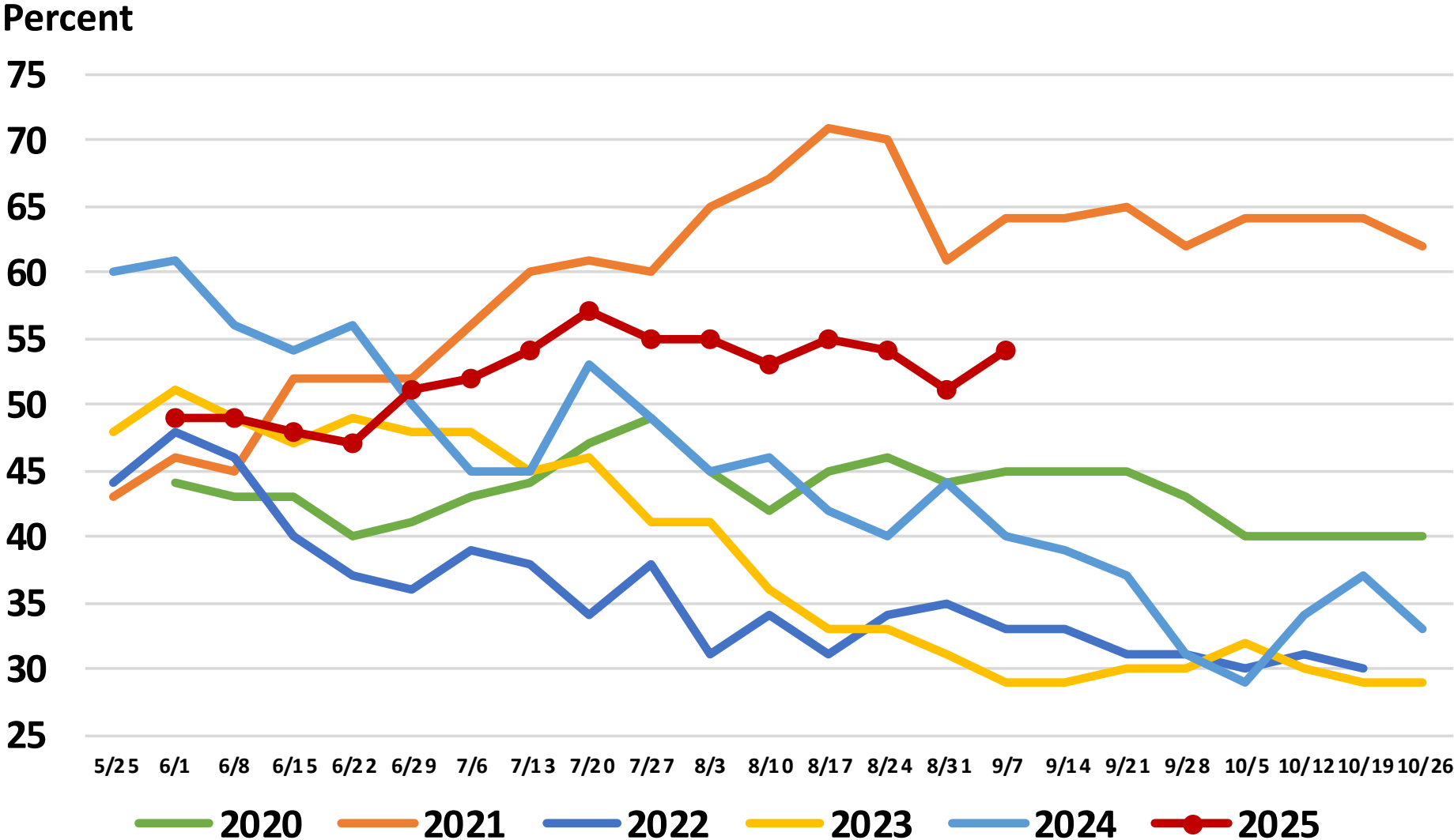
## Industry Expectations vs NASS





# United States Cotton Condition

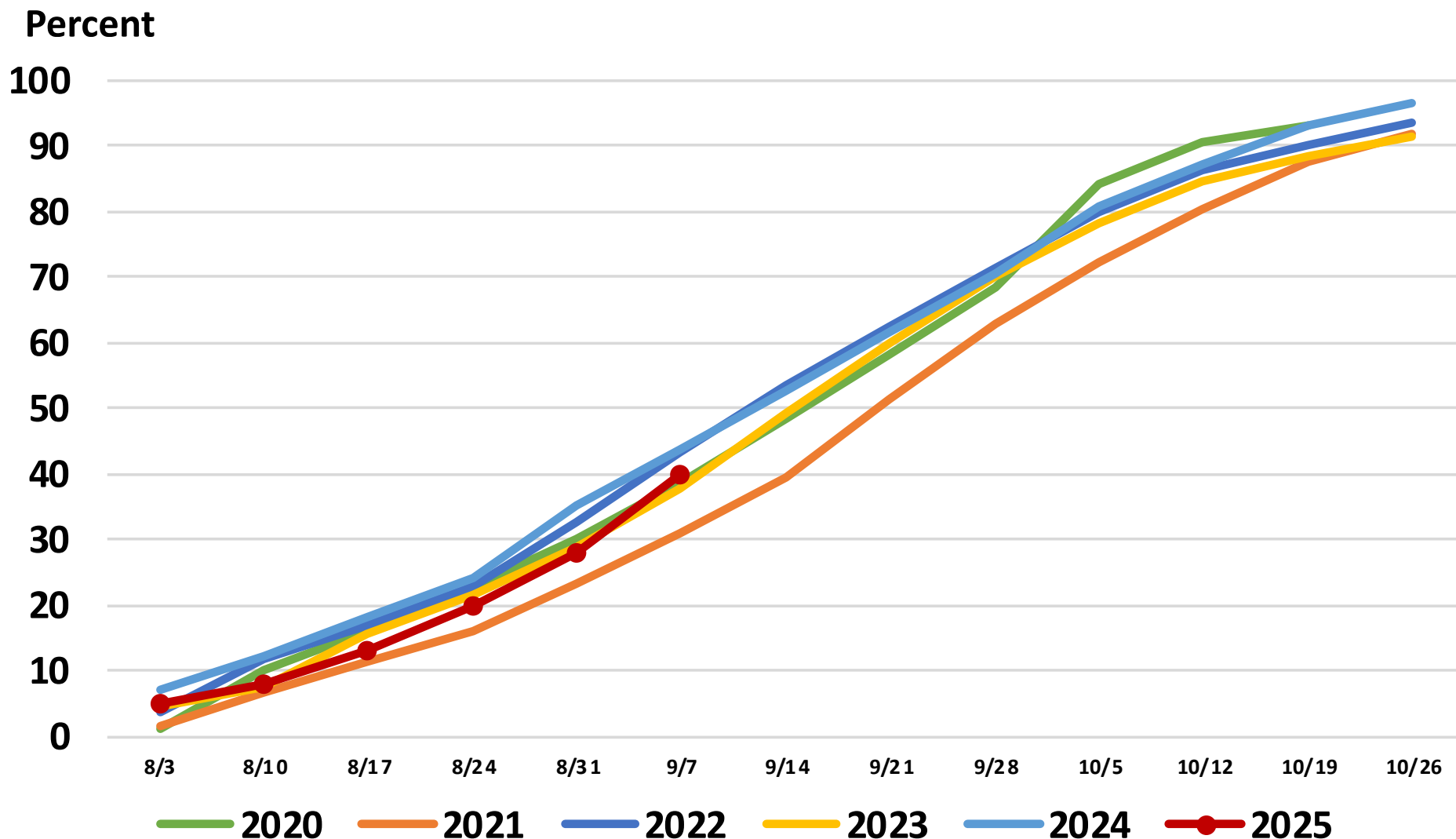
## Percent Rated Good to Excellent





# United States Cotton Progress

## Percent Bolls Opening





# September 2025 Cotton

## Acreage, Yield, and Production

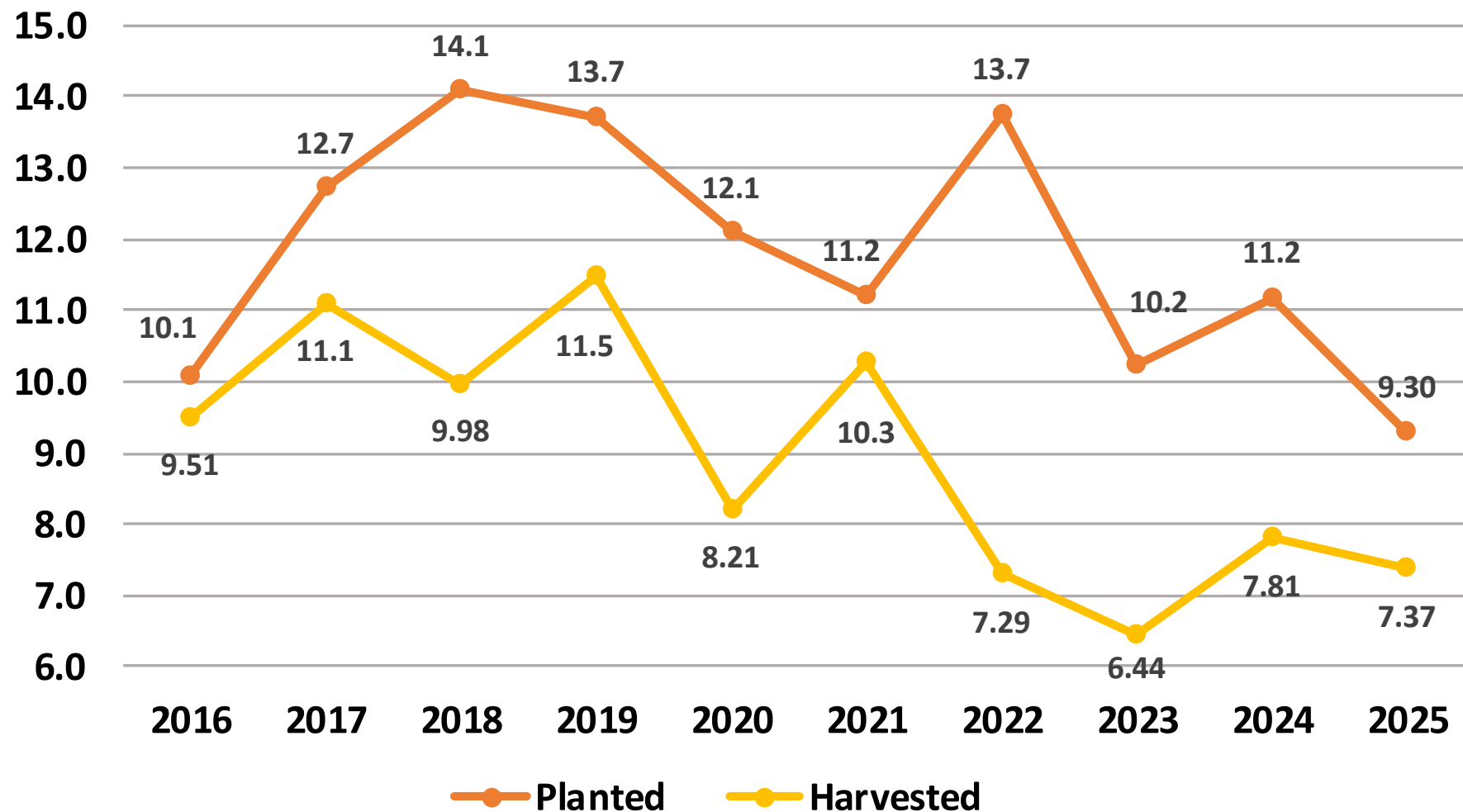
	Planted (1,000 Acres)	Harvested (1,000 Acres)	Yield (Pounds/Acre)	Production (1,000 Bales)
<b>United States</b>	<b>9,296</b>	<b>7,369</b>	<b>861</b>	<b>13,224</b>
% Change from Previous Estimate	↑ 0.2	↑ 0.2	↓ 0.1	↑ 0.1
% Change from Previous Season	↓ 16.9	↓ 5.6	↓ 2.8	↓ 8.2

Top 5 States - By Production										
	Planted (1,000 Acres)		Harvested (1,000 Acres)		Yield (Pounds/Acre)		Production (1,000 Bales)			
		% Δ PY		% Δ PY		% Δ PY		% Δ PY		% Δ PY
Texas	5,322	↓ 11.0	3,620	↑ 21.5	693.0	↑ 5.5	5,230	↑ 28.2		
Georgia	840	↓ 23.6	830	↓ 23.1	896.0	↑ 4.4	1,550	↓ 19.7		
Arkansas	520	↓ 20.0	515	↓ 19.5	1,258.0	↓ 6.2	1,350	↓ 24.5		
Missouri	355	↓ 11.2	340	↓ 10.5	1,405.0	↑ 6.4	995	↓ 4.8		
Mississippi	330	↓ 36.5	325	↓ 36.9	1,108.0	↓ 4.2	750	↓ 39.6		

# Cotton Acres

## United States

Million Acres

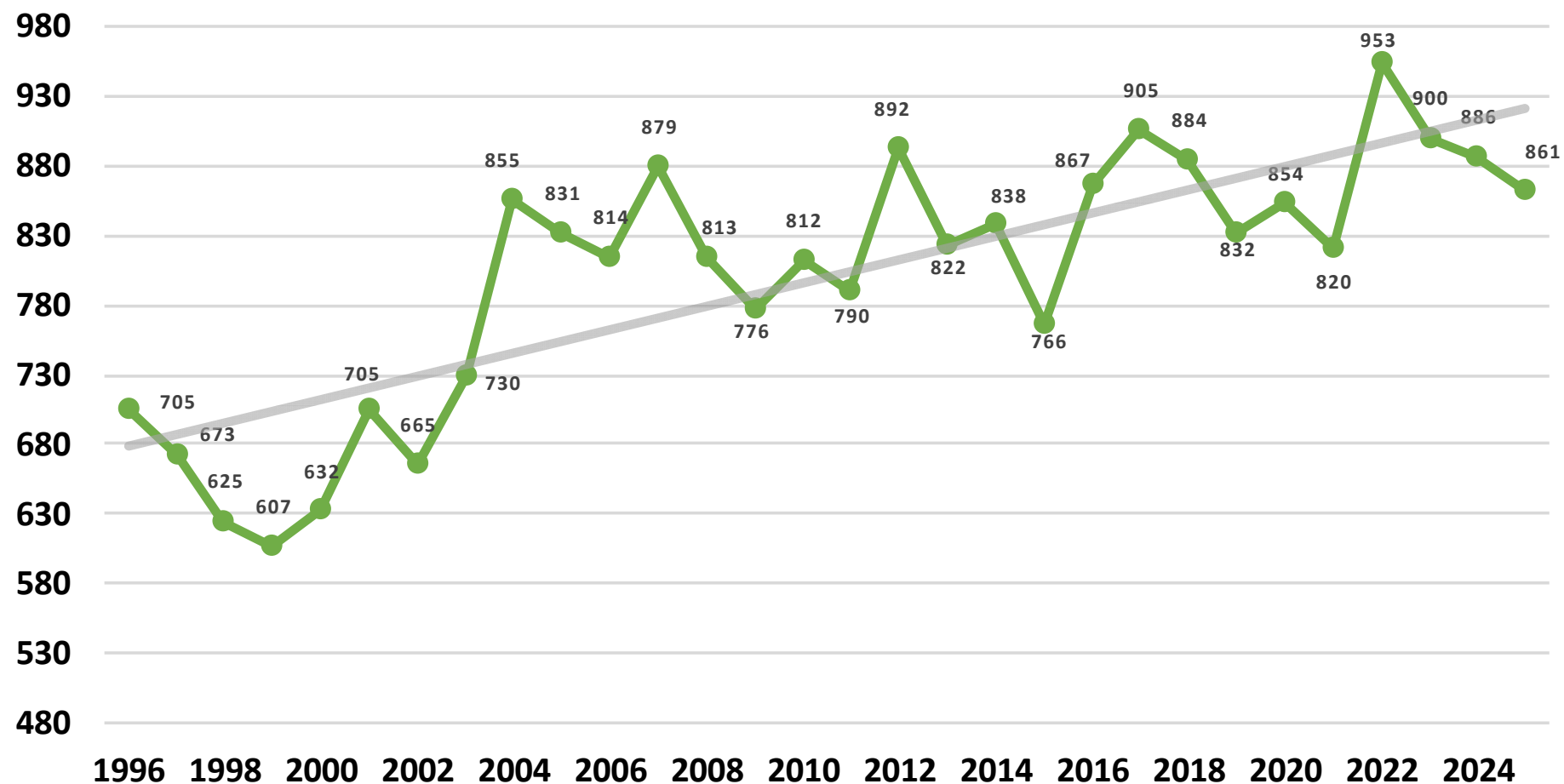




# Cotton Yield

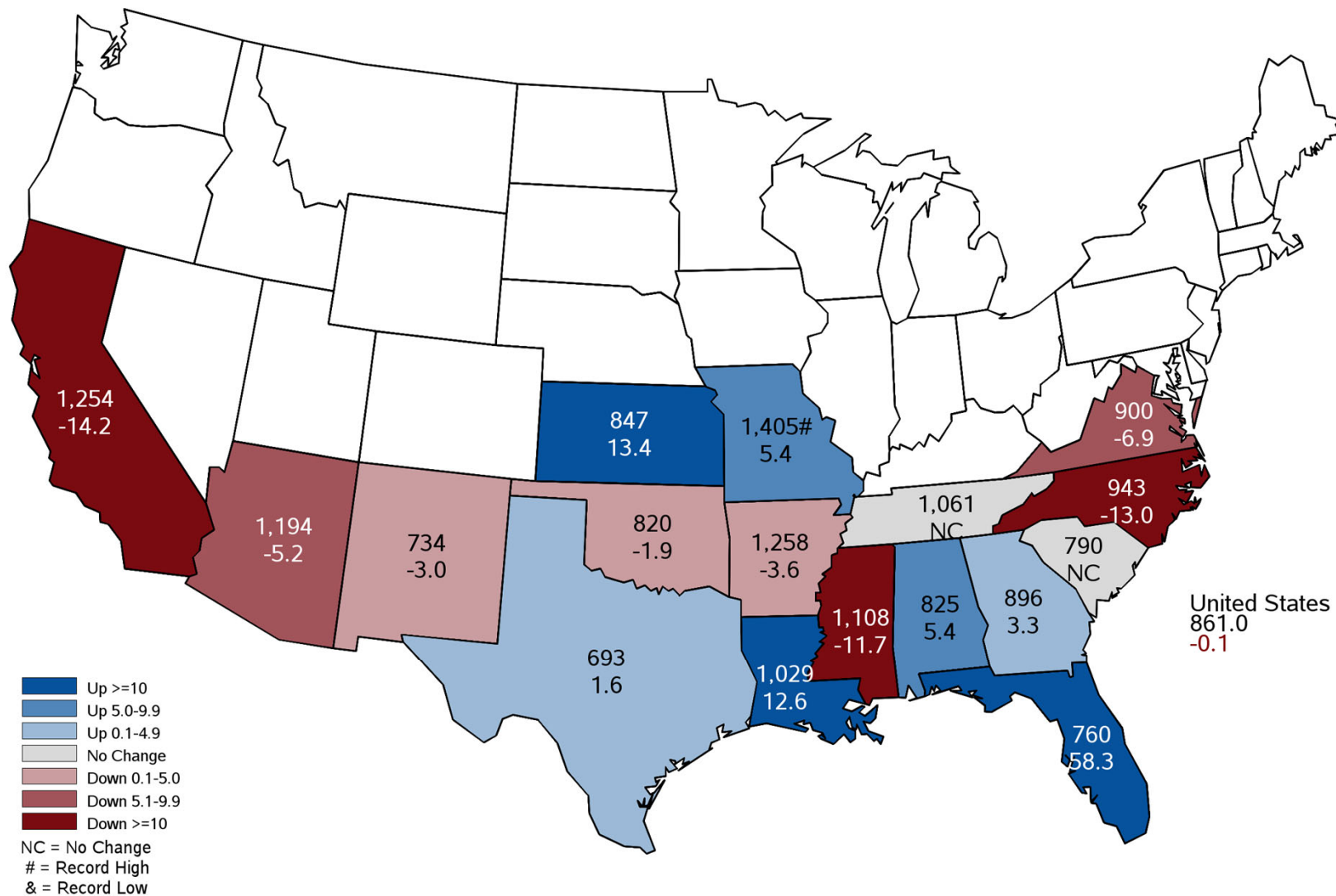
## United States

Pounds per Acre



# September 2025 Cotton Yield

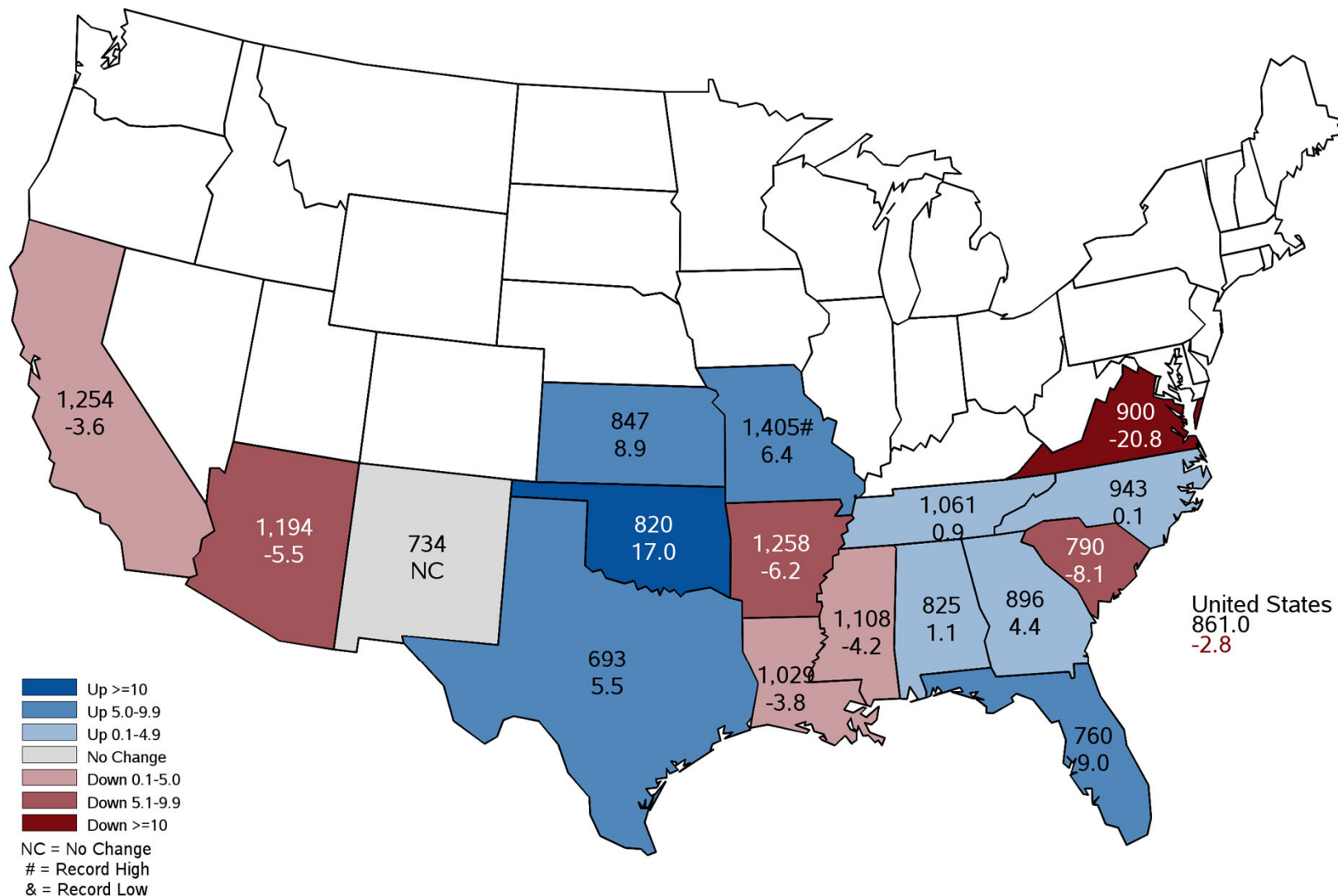
## Pounds and Percent Change from Previous Month





# September 2025 Cotton Yield

## Pounds and Percent Change from Previous Year

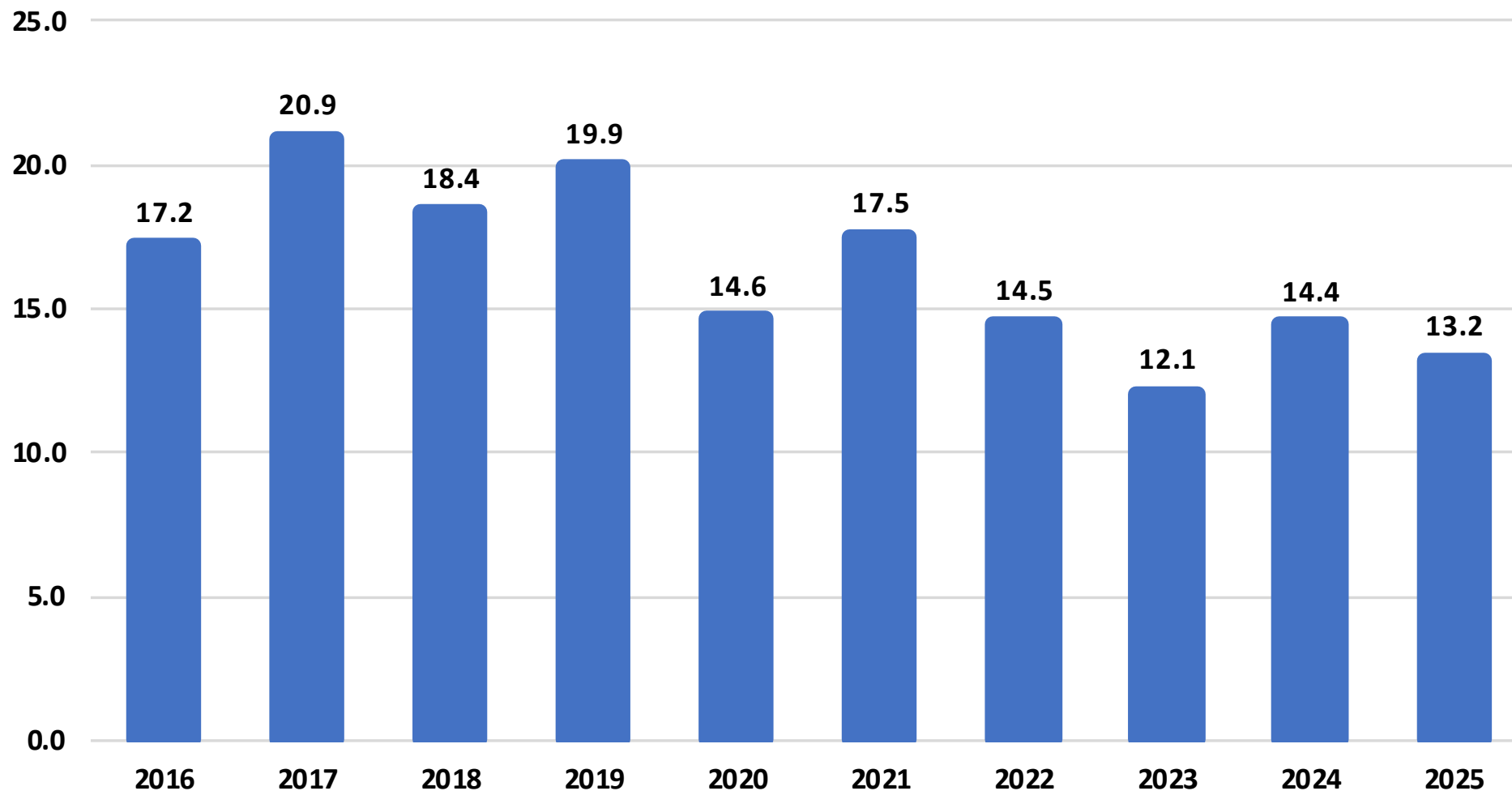




# Cotton Production

## United States

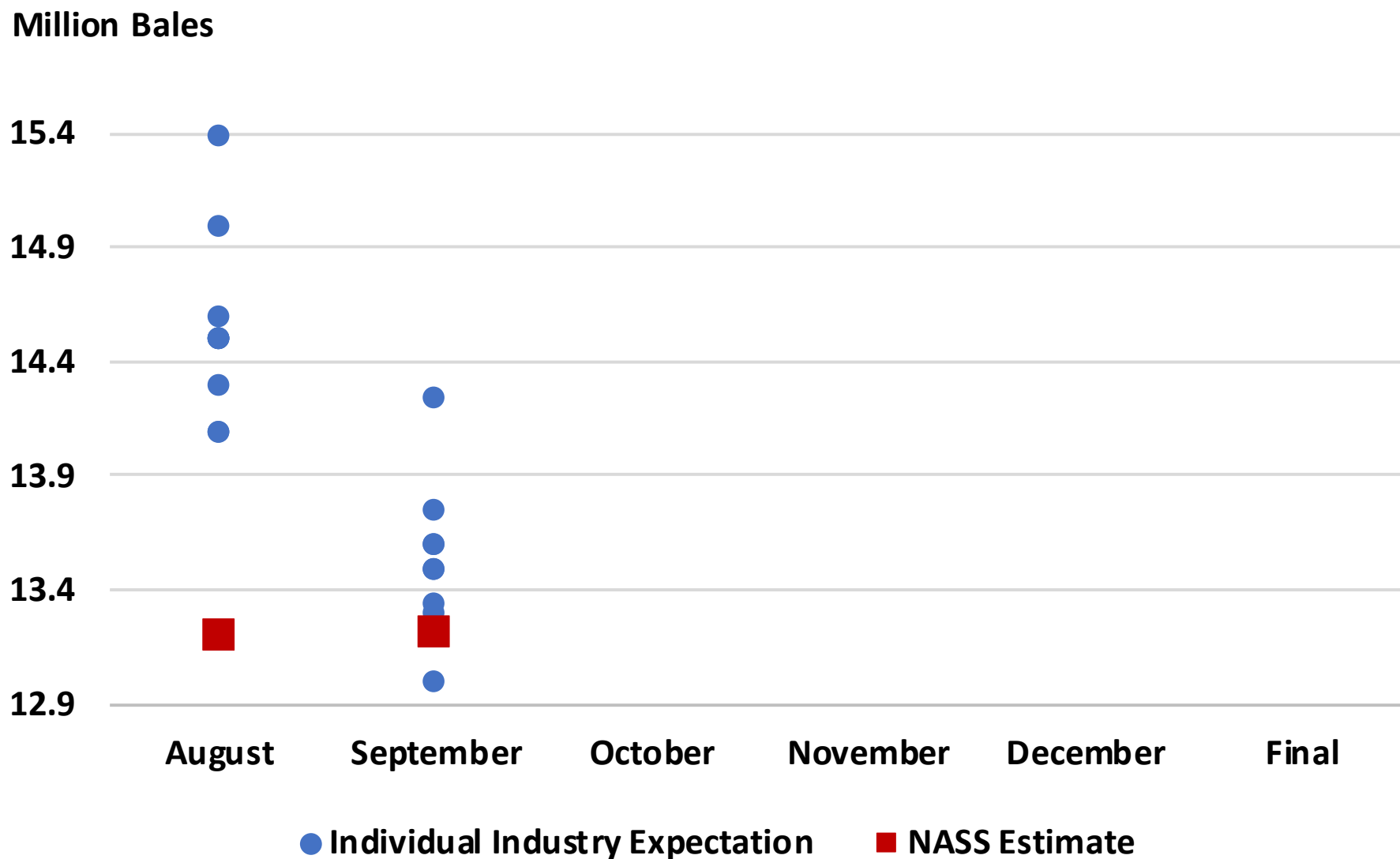
Million Bales





# 2025 U.S. Cotton Production

## Industry Expectations vs NASS





# September 2025 Field Crops

## Acreage, Yield, and Production

	Planted (1,000 Acres)	Harvested (1,000 Acres)	Yield (Units per Acre)	Unit	Production (1,000 Units)	Unit
<b>Chickpeas</b>	<b>541</b>	<b>524</b>	<b>1,418</b>	<b>Lb</b>	<b>7,430</b>	<b>Cwt</b>
% Change from Previous Estimate	↑ 0.2	↑ 0.2	N/A		N/A	
% Change from Previous Season	↑ 7.8	↑ 6.4	↑ 24.0		↑ 31.9	
<b>Dry Edible Peas</b>	<b>1,179</b>	<b>1,134</b>	<b>1,814</b>	<b>Lb</b>	<b>20,576</b>	<b>Cwt</b>
% Change from Previous Estimate	↑ 10.2	↑ 10.7	N/A		N/A	
% Change from Previous Season	↑ 20.8	↑ 20.7	↑ 2.2		↑ 23.4	
<b>Lentils</b>	<b>1,073</b>	<b>1,051</b>	<b>1,055</b>	<b>Lb</b>	<b>11,083</b>	<b>Cwt</b>
% Change from Previous Estimate	↑ 6.2	↑ 9.0	N/A		N/A	
% Change from Previous Season	↑ 14.6	↑ 16.4	↑ 5.3		↑ 22.5	
<b>Peanuts</b>	<b>1,954</b>	<b>1,901</b>	<b>3,890</b>	<b>Lb</b>	<b>7,395,000</b>	<b>Lb</b>
% Change from Previous Estimate	↑ 0.7	↑ 0.7	↑ 1.4		↑ 2.1	
% Change from Previous Season	↑ 8.5	↑ 8.1	↑ 6.1		↑ 14.7	
<b>Rice</b>	<b>2,823</b>	<b>2,762</b>	<b>7,559</b>	<b>Lb</b>	<b>208,777</b>	<b>Cwt</b>
% Change from Previous Estimate	↑ 1.2	↑ 1.2	↓ 1.0		↑ 0.2	
% Change from Previous Season	↓ 3.0	↓ 3.7	↓ 2.4		↓ 6.0	



# September 2025 Field Crops

## Acreage, Yield, and Production

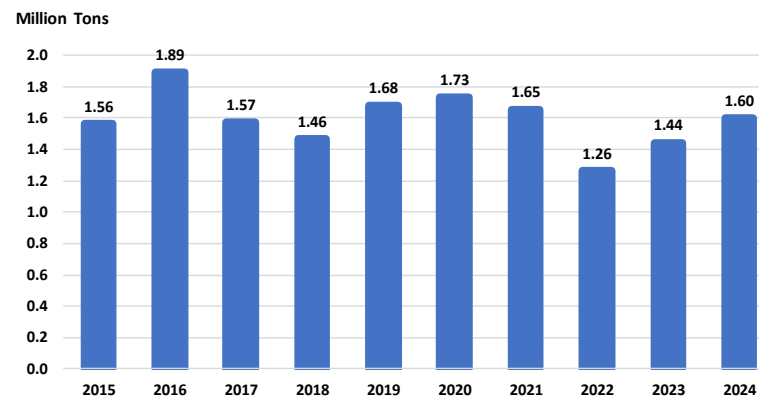
	Planted (1,000 Acres)	Harvested (1,000 Acres)	Yield (Units per Acre)	Unit	Production (1,000 Units)	Unit
<b>Sorghum</b>	<b>6,645</b>	<b>5,715</b>	<b>70.4</b>	<b>Bu</b>	<b>402,235</b>	<b>Bu</b>
% Change from Previous Estimate	↑ 0.6	↑ 0.7	↑ 2.0		↑ 2.7	
% Change from Previous Season	↑ 5.5	↑ 2.0	↑ 14.8		↑ 17.0	
<b>Sugarbeets</b>	<b>1,080</b>	<b>1,069</b>	<b>33.0</b>	<b>Ton</b>	<b>35,308</b>	<b>Ton</b>
% Change from Previous Estimate	↑ 0.1	↑ 0.4	↑ 0.3		↑ 0.8	
% Change from Previous Season	↓ 2.2	↓ 1.5	↑ 1.5		↑ 0.1	
<b>Sugarcane</b>	<b>N/A</b>	<b>937</b>	<b>36.7</b>	<b>Ton</b>	<b>34,366</b>	<b>Ton</b>
% Change from Previous Estimate	N/A	↑ 0.9	↑ 0.5		↑ 1.3	
% Change from Previous Season	N/A	↑ 1.8	↓ 1.9		↓ <0.1	
<b>Tobacco</b>	<b>N/A</b>	<b>171</b>	<b>2,209</b>	<b>Lb</b>	<b>376,830</b>	<b>Lb</b>
% Change from Previous Estimate	N/A	↑ 0.5	↑ 2.3		↑ 2.8	
% Change from Previous Season	N/A	↑ 1.9	↑ 13.7		↑ 15.9	



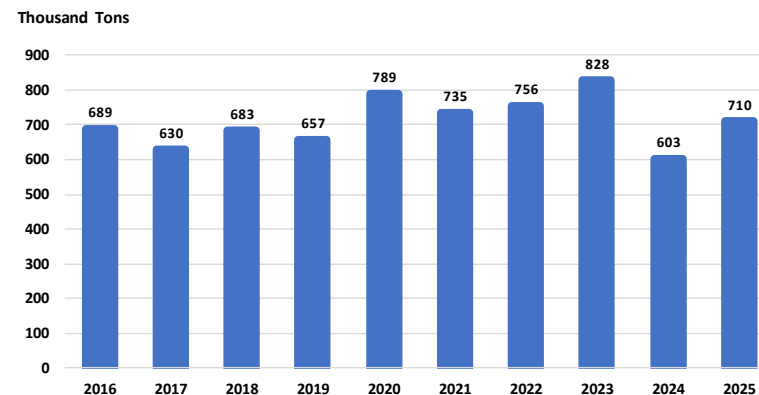
# September 2025 Fruits and Nuts Production

	Production	Unit
	(1,000 Units)	
<b>Navel Oranges (CA)</b>	<b>1,600</b>	<b>Ton</b>
% Change from Previous Estimate	N/A	
% Change from Previous Season	↑ 5.5	
<b>Walnuts (CA)</b>	<b>710</b>	<b>Ton</b>
% Change from Previous Estimate	N/A	
% Change from Previous Season	↑ 17.7	

Navel Orange Production  
California



Walnut Production  
United States





# Selected Upcoming Reports



<b>September 19</b>	<b>Cattle on Feed</b>
<b>September 25</b>	<b>Hogs and Pigs</b>
<b>September 30</b>	<b>Agricultural Prices Grain Stocks Small Grains Summary</b>
<b>October 1</b>	<b>Cotton System Fats &amp; Oils Grain Crushings</b>
<b>October 9</b>	<b>Cotton Ginnings Crop Production</b>

<https://www.nass.usda.gov/Publications/index.php>





# Data Users' Meeting



Fall 2025

## USDA Data Users' Meeting

October 21  
1 p.m. CT  
West Des Moines, IA



**USDA Fall Data Users' Meeting**  
**Join Us Online or in West Des Moines**  
**October 21, 2025**





# #StatChat



## STAT CHAT SERIES



@usda\_nass  
#STATCHAT

Join @usda\_nass on X to discuss the **Crop Production** report with NASS Agricultural Statistics Board Chair, Lance Honig. Post questions ahead of time using #StatChat.

**FRIDAY,  
SEPT. 12  
1:30 PM ET**





**All Reports Available At**

**[www.nass.usda.gov](http://www.nass.usda.gov)**

**For Questions**

**(202) 720-2127**

**(800) 727-9540**

**[nass@usda.gov](mailto:nass@usda.gov)**