



October Crop Production

Agricultural Statistics Board Briefing

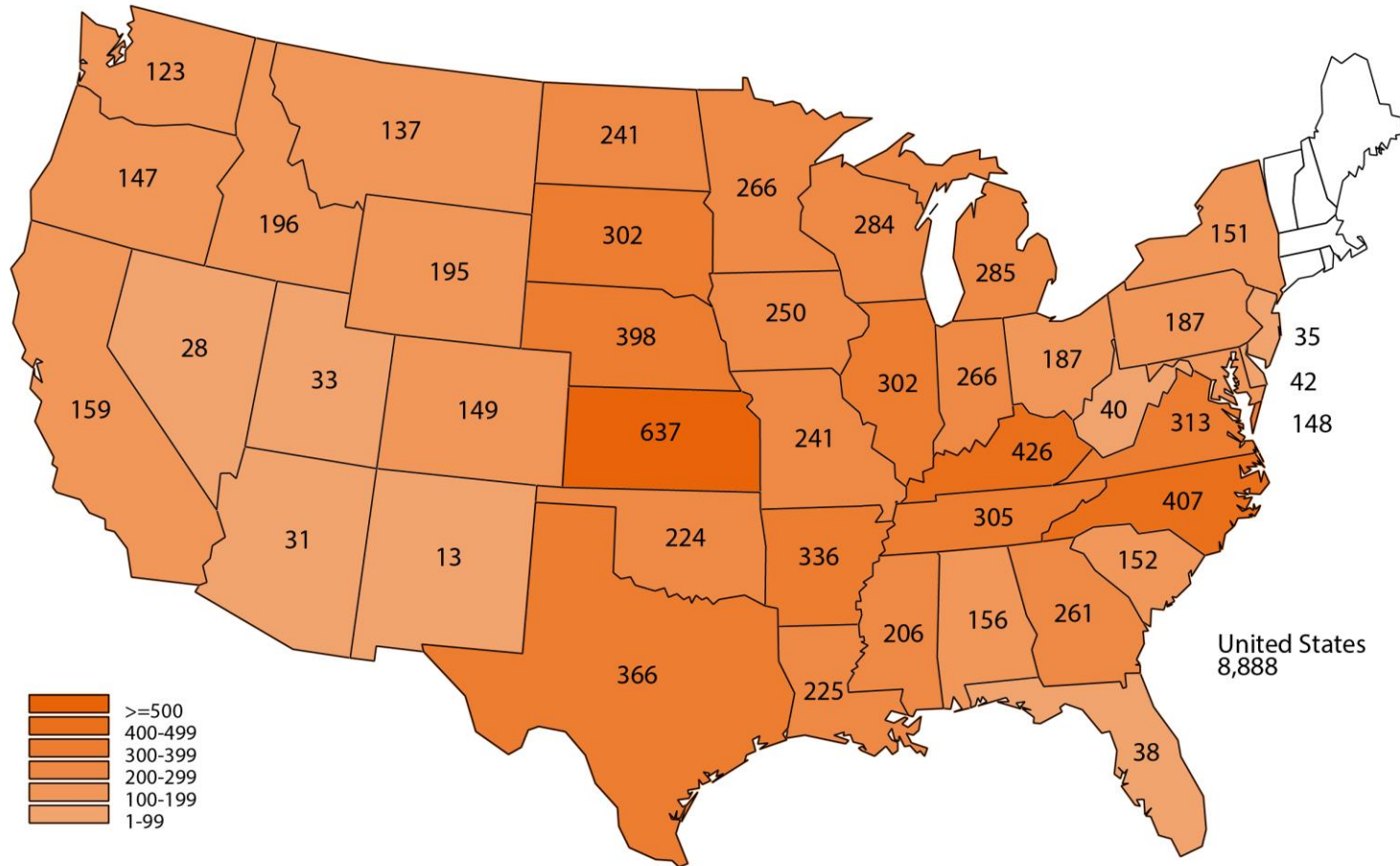
Lance Honig, Chief
Crops Branch

Data Sources

Operator Reported Survey	Ag Yield	Sample Size = 8,888	September 29 - October 5
Field Surveys	Objective Yield Corn, Cotton, Soybeans	Sample Size = 3,930	September 24 - October 1
	Tree Inventory Florida Citrus	217,065 Acres	July 1, 2020 - June 30, 2021
	Limb Count Florida Citrus	3,042 Groves	July 12 - September 16
	Size and Drop Florida Citrus	1,901 Groves	September 7 - September 24
Remotely Sensed (Satellite)	Time Series 250 Meter MODIS Satellite Data	Focus Area Corn Belt	Imagery Through September 29
FSA Certified Acres	Farm Service Agency policy requires that producers participating in several programs submit an annual report regarding all cropland use on their farms.		

October 2021 Ag Yield Survey

Sample Sizes





Special Note

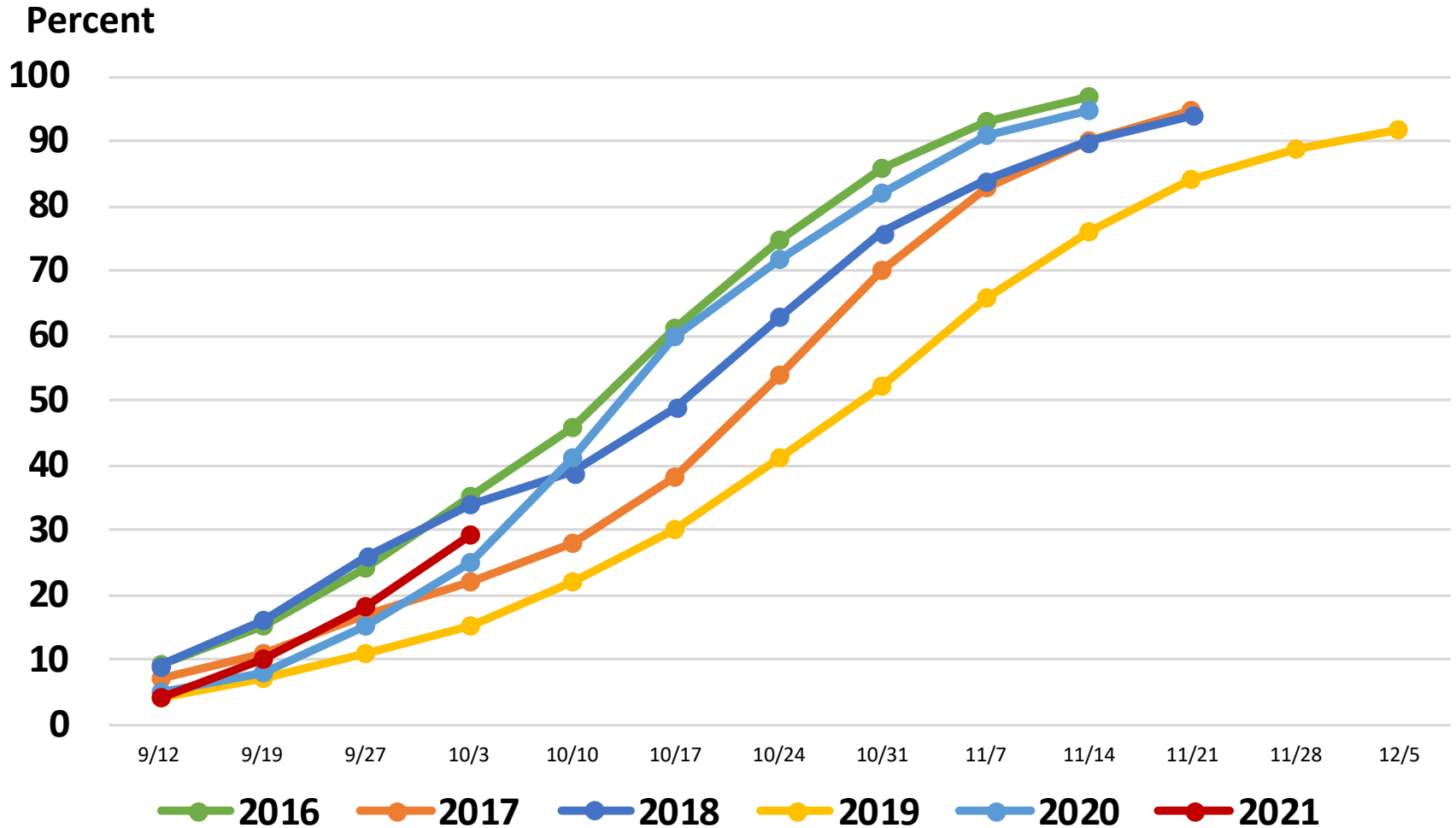


Each October, NASS considers revisions to planted and harvested acreage for canola, corn, dry edible beans, sorghum, soybeans, sugarbeets, and sunflower. Updates are based on all available data, including the latest certified acreage data from the Farm Service Agency (FSA). All States in the estimating program for these crops were subject to review and updating.

NASS previously reviewed corn, sorghum, soybeans, and sugarbeets in September due to the completeness of this season's data for these crops and published updates at that time. No additional changes were made for corn, sorghum, or soybeans this month.

United States Corn Progress

Percent Harvested





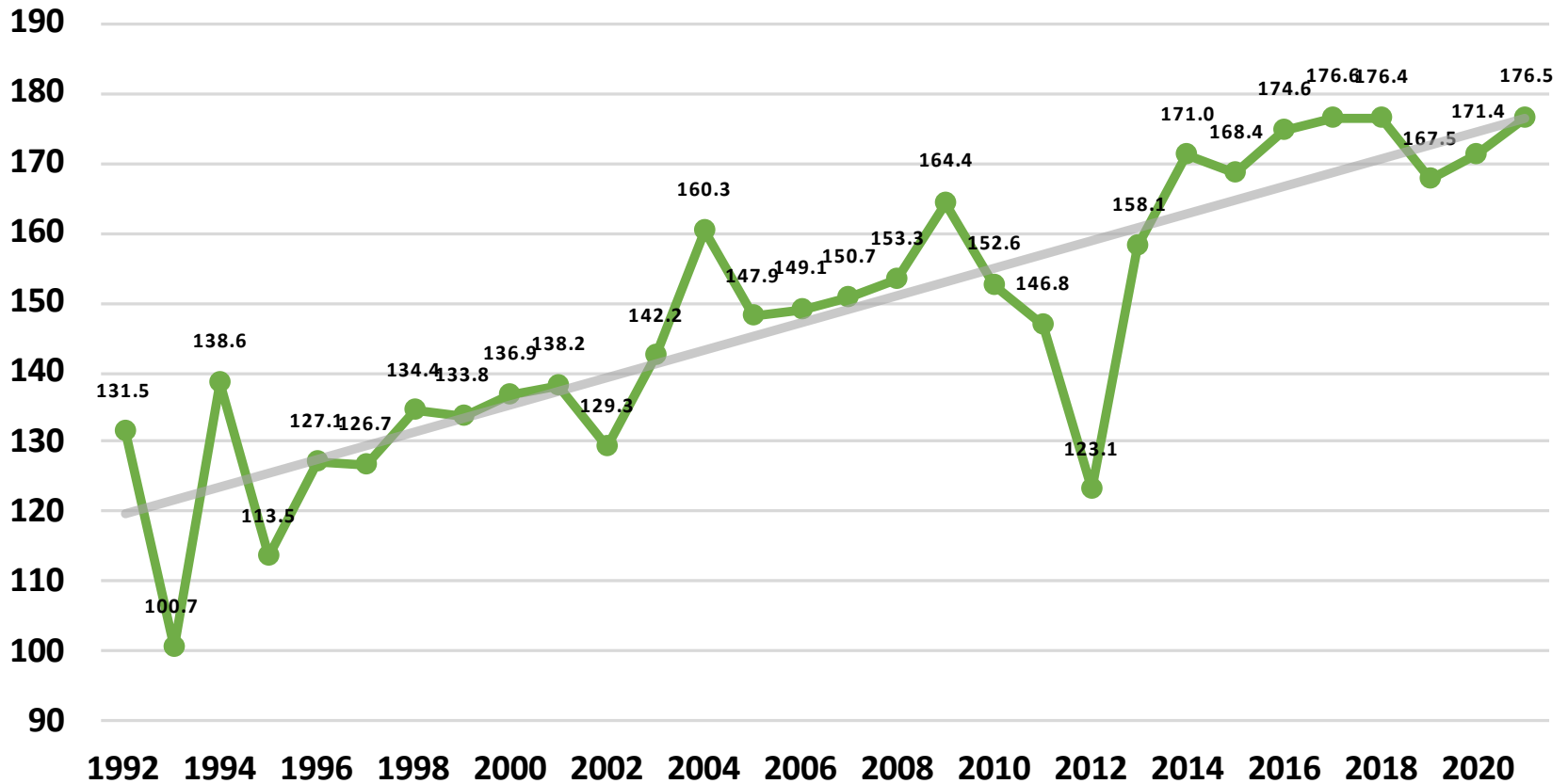
October 2021 Corn Acreage, Yield, and Production

	Planted (1,000 Acres)	Harvested (1,000 Acres)	Yield (Bushels/Acre)	Production (1,000 Bushels)
United States	93,304	85,085	176.5	15,018,542
% Change from Previous Estimate	NC	NC	↑ 0.1	↑ 0.1
% Change from Previous Season	↑ 2.9	↑ 3.4	↑ 3.0	↑ 6.4

	Top 5 States - By Production							
	Planted (1,000 Acres)		Harvested (1,000 Acres)		Yield (Bushels/Acre)		Production (1,000 Bushels)	
		% Δ PY		% Δ PY		% Δ PY		% Δ PY
Iowa	12,900	↓ 5.1	12,450	↓ 3.5	201	↑ 13.6	2,502,450	↑ 9.6
Illinois	11,000	↓ 2.7	10,800	↓ 2.7	210	↑ 9.9	2,268,000	↑ 7.0
Nebraska	9,900	↓ 2.9	9,600	↓ 2.9	190	↑ 5.6	1,824,000	↑ 2.5
Minnesota	8,300	↑ 3.8	7,800	↑ 3.9	178	↓ 6.8	1,388,400	↓ 3.2
Indiana	5,400	NC	5,250	NC	194	↑ 3.7	1,018,500	↑ 3.7

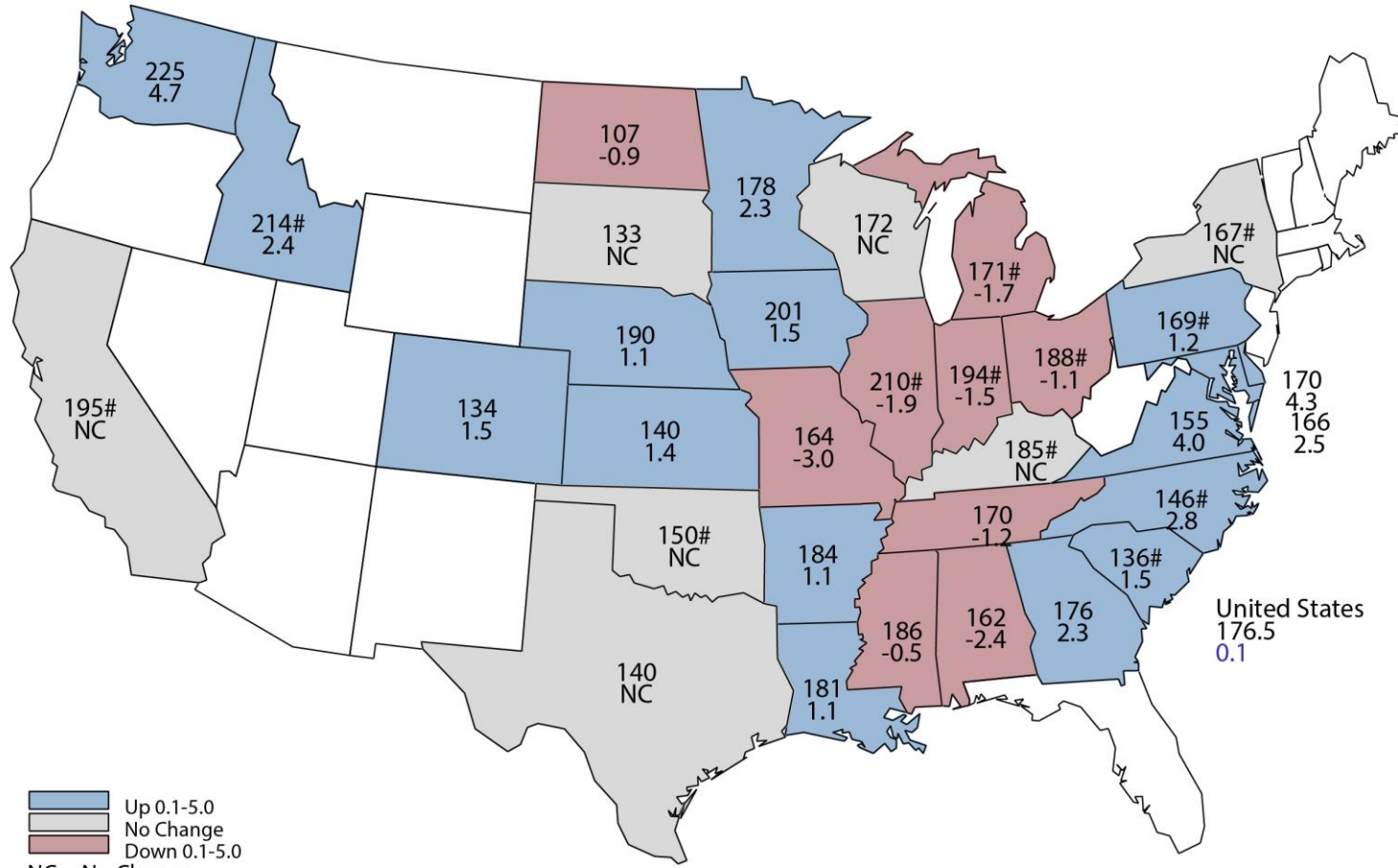
Corn Yield United States

Bushels per Acre



October 2021 Corn Yield

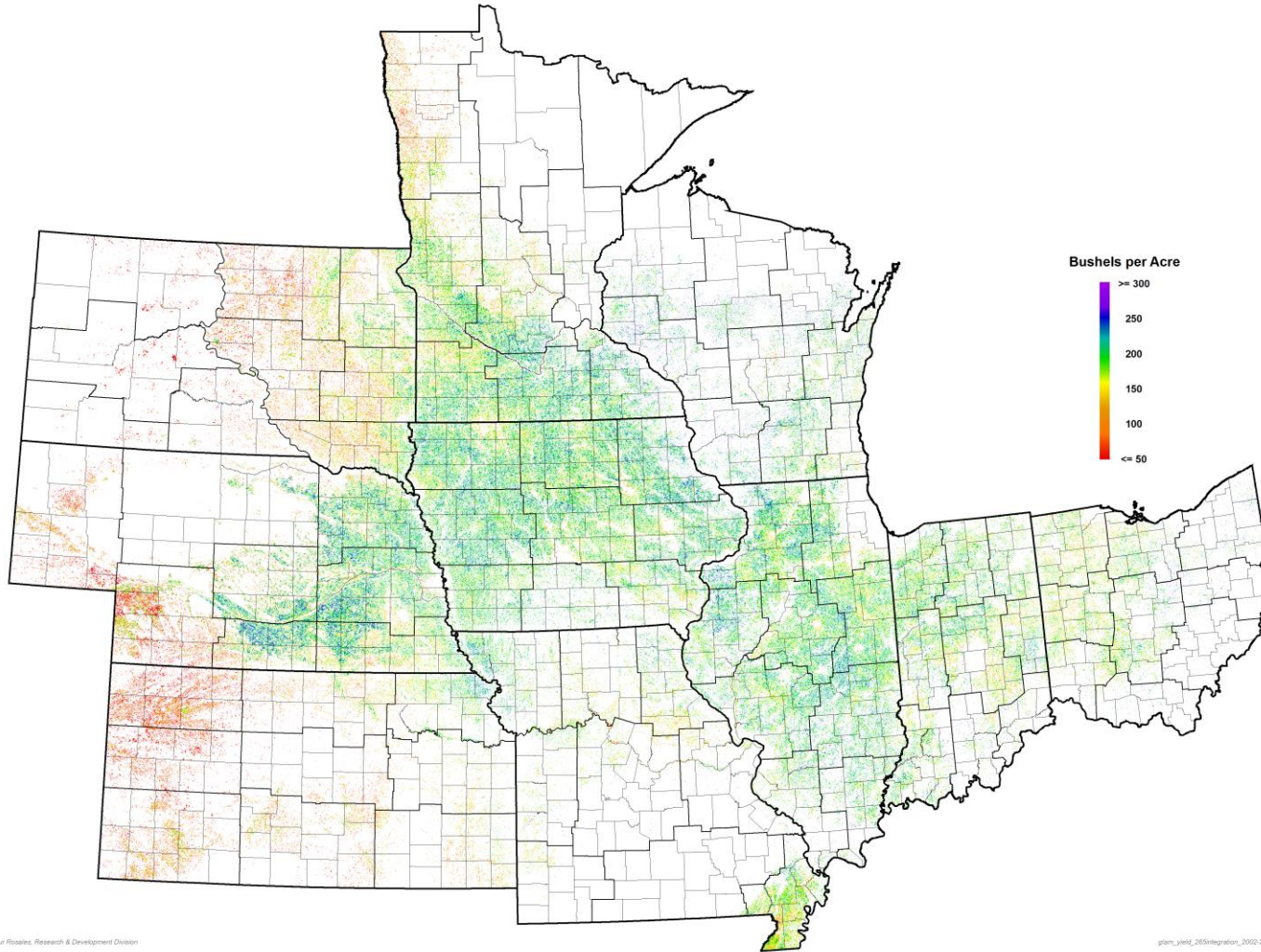
Bushels and Percent Change from Previous Month



■ Up 0.1-5.0
■ No Change
■ Down 0.1-5.0
 NC = No Change
 # = Record High
 & = Record Low

October 2021 Corn

NASA Terra MODIS Modeled Yield



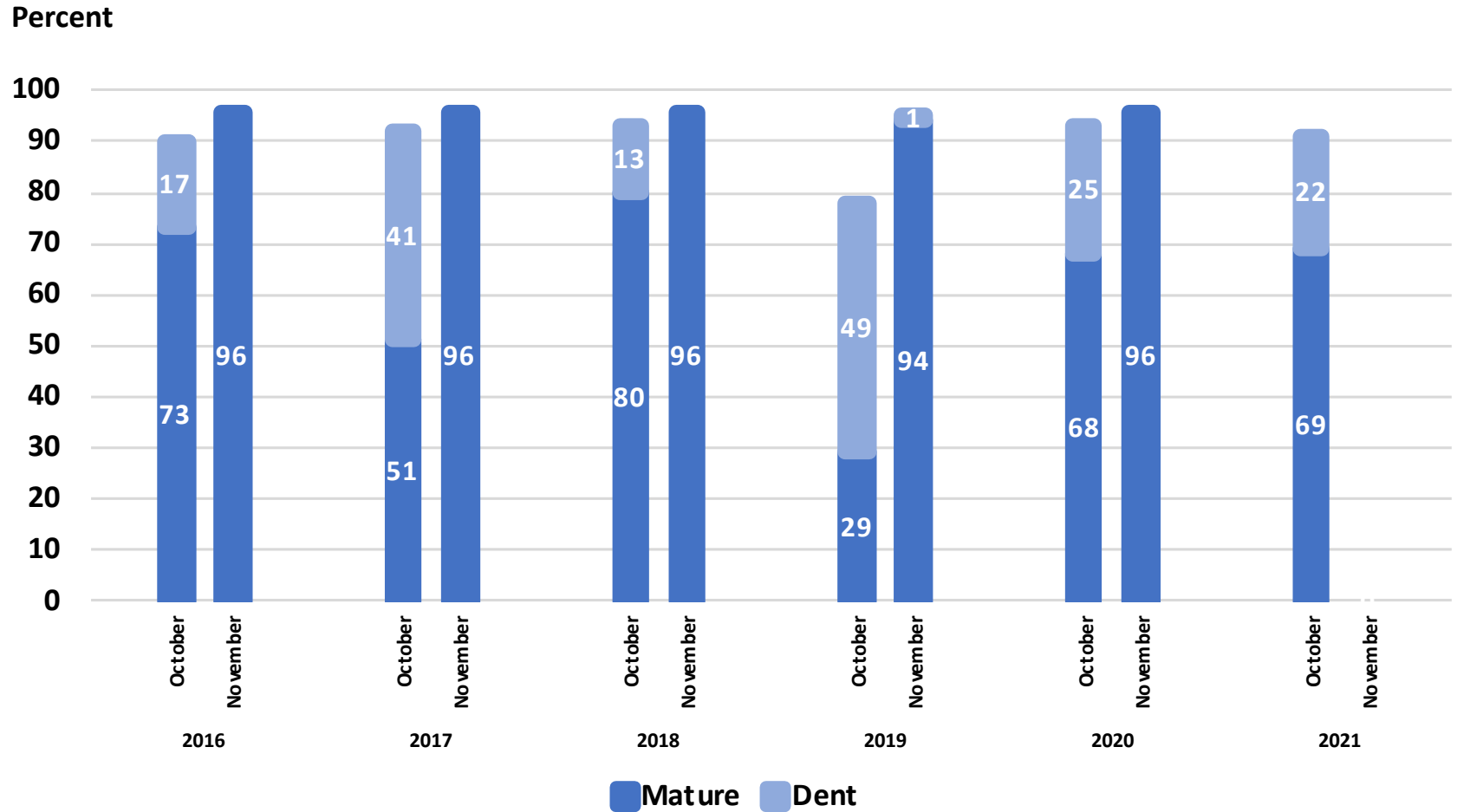
David M. Johnson & Arthur Roseboro, Research & Development Division

plam_yield_265integration_2020_20_2021_com_nc_hgpos_10/4/2021



October 2021 Corn Objective Yield

Percent of Samples Processed in the Lab

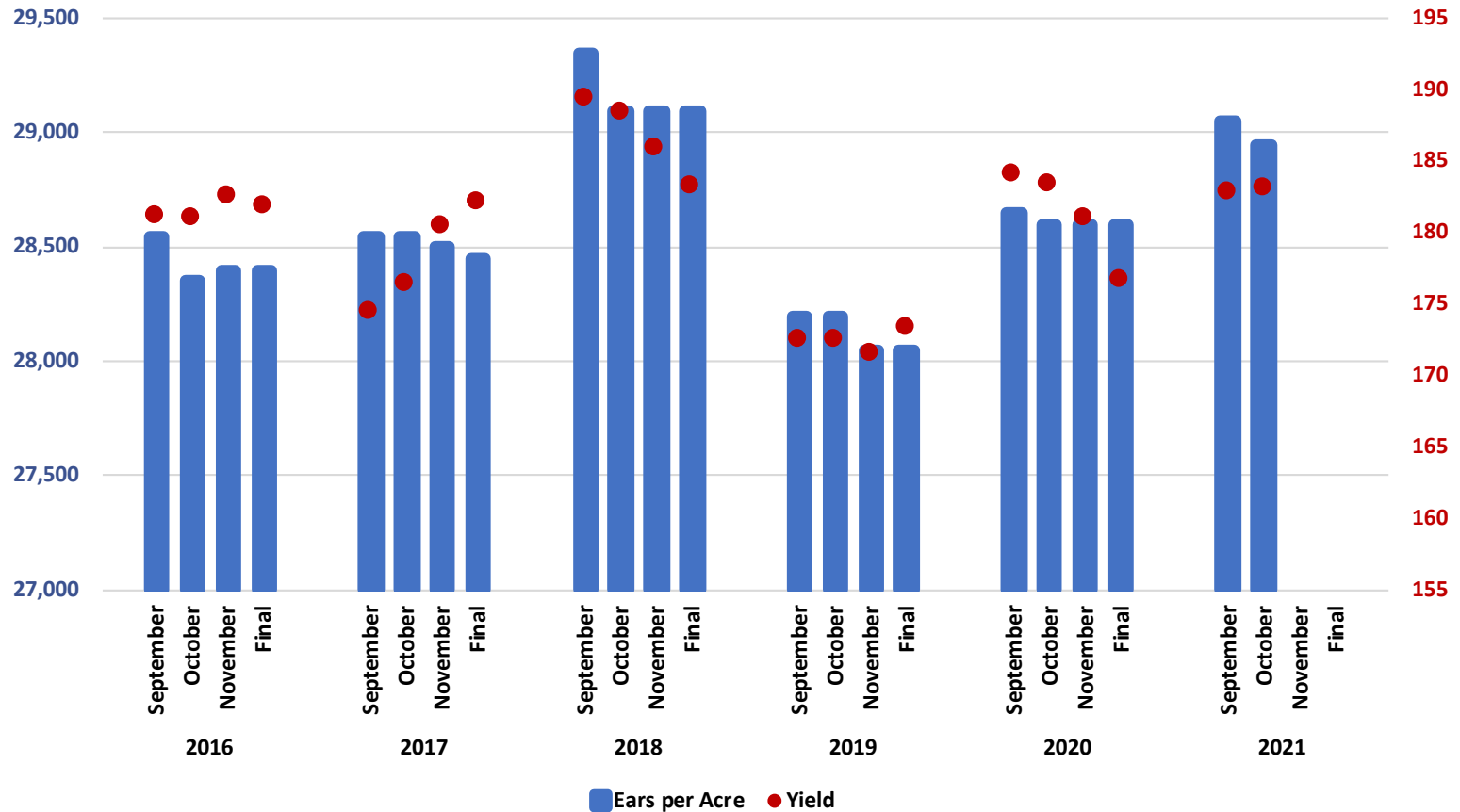


October 2021 Corn Objective Yield

Ears per Acre and Yield for 10 State Region

Ears per Acre

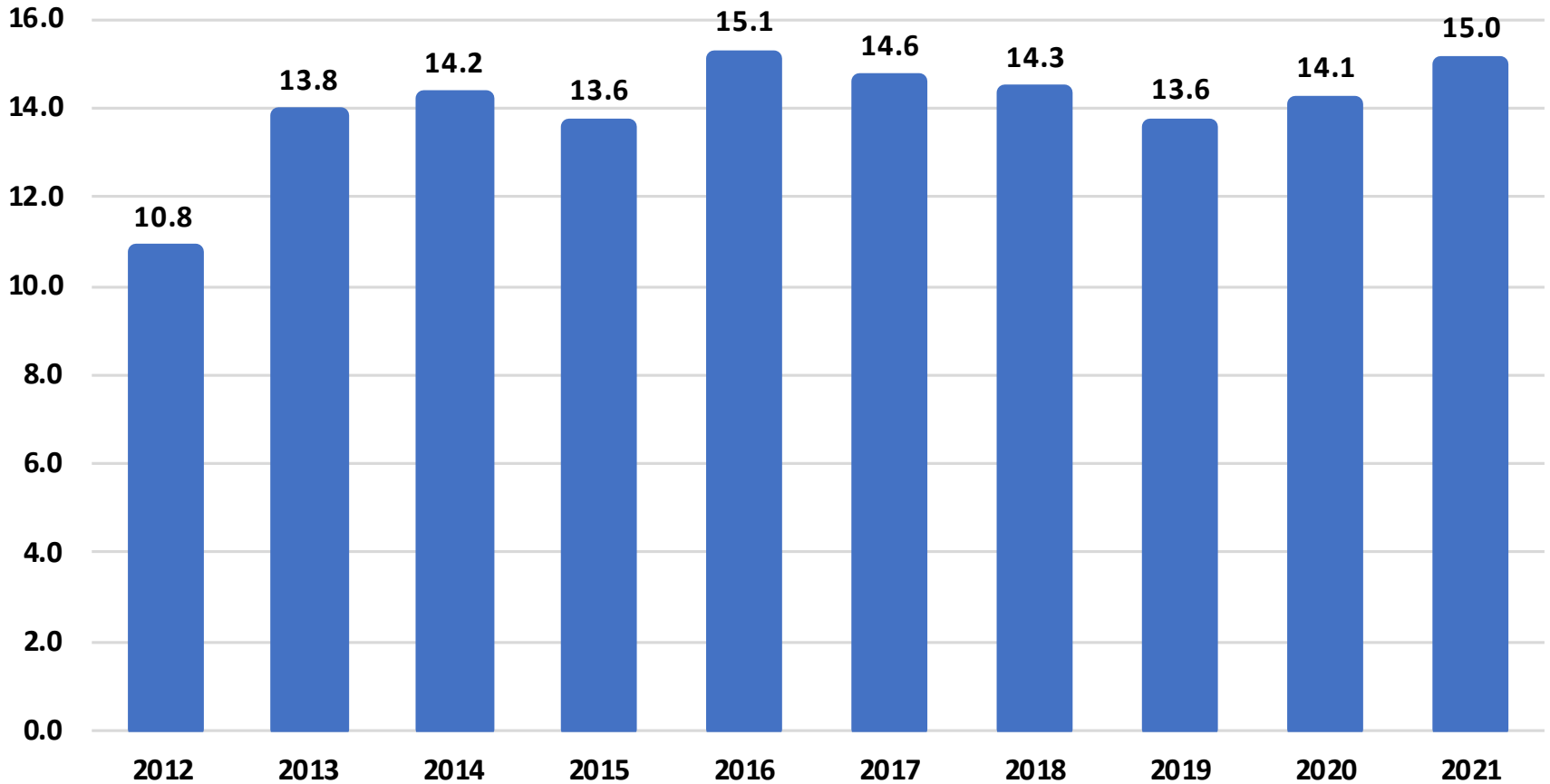
Bushels per Acre



Corn Production

United States

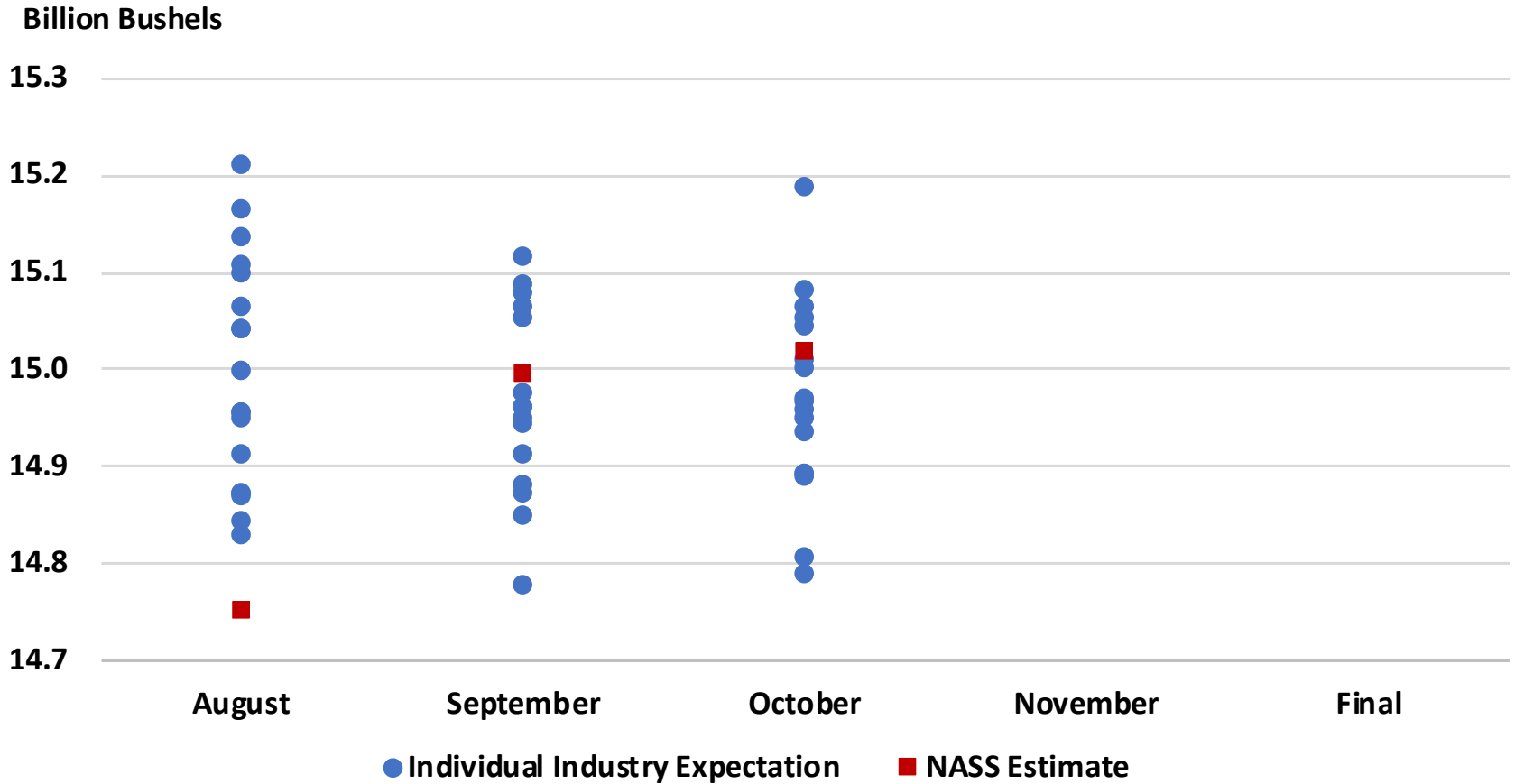
Billion Bushels





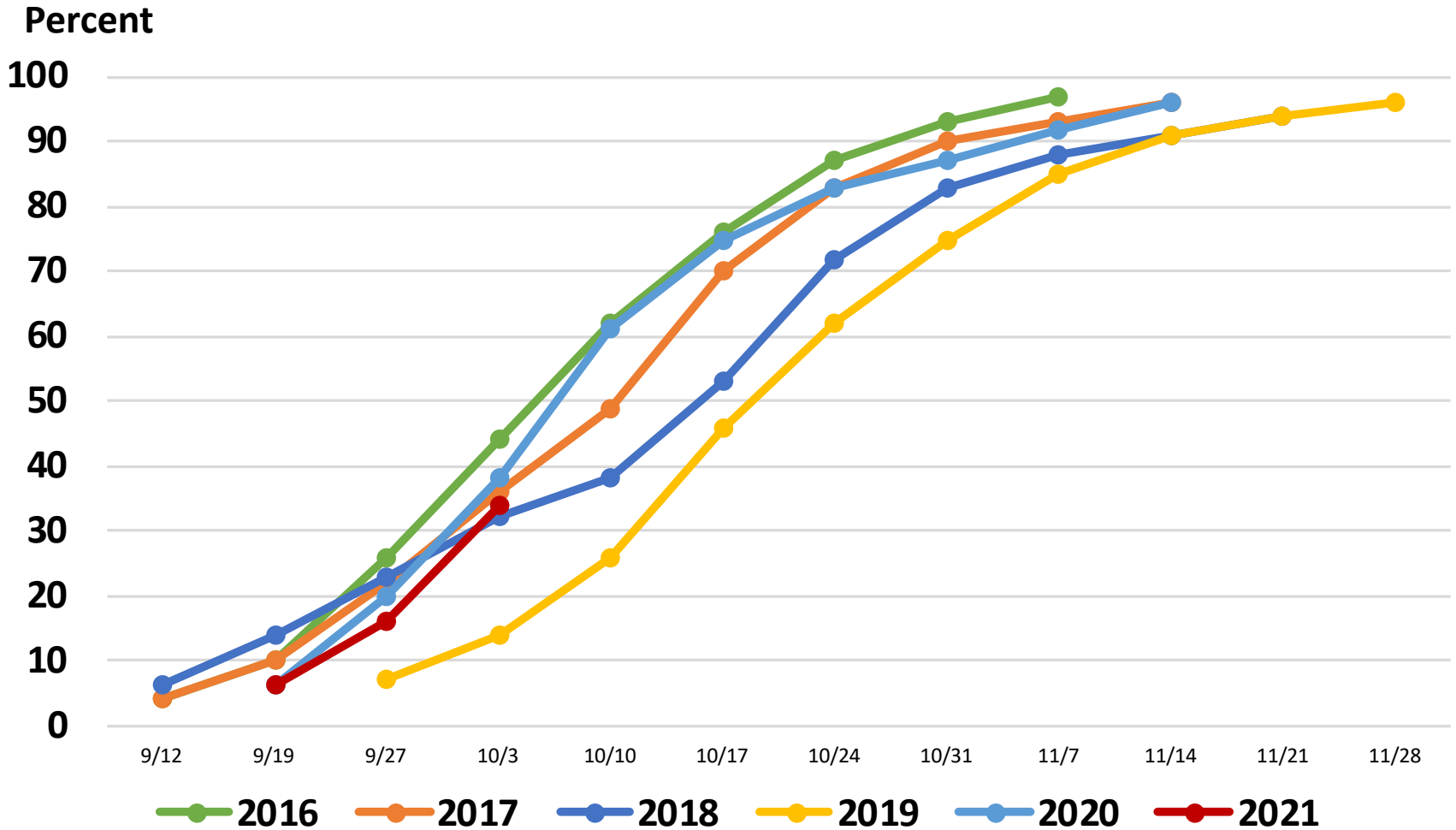
2021 U.S. Corn Production

Industry Expectations vs NASS



United States Soybean Progress

Percent Harvested





October 2021 Soybeans

Acreage, Yield, and Production

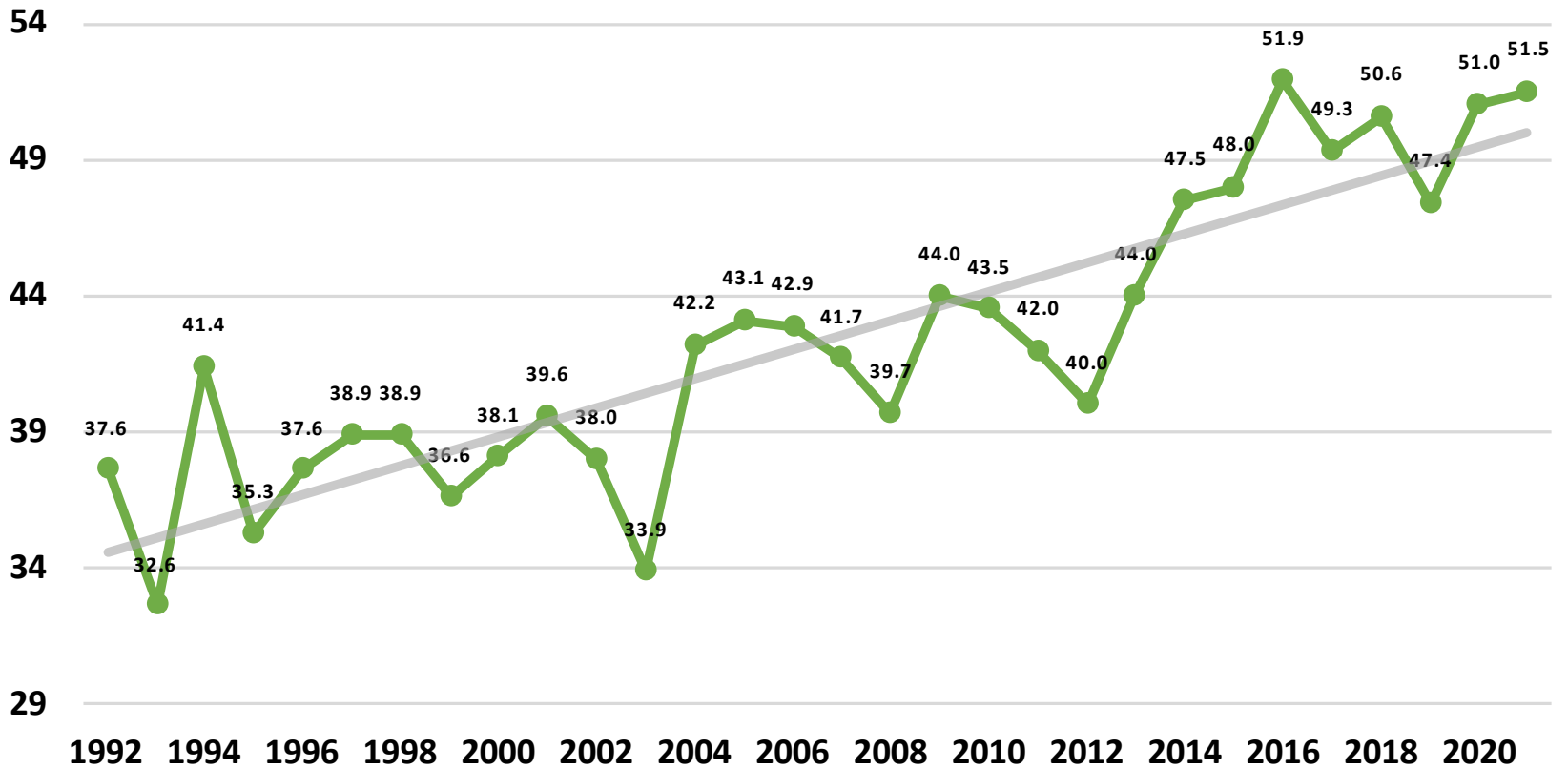
	Planted (1,000 Acres)	Harvested (1,000 Acres)	Yield (Bushels/Acre)	Production (1,000 Bushels)
United States	87,235	86,436	51.5	4,448,043
% Change from Previous Estimate	NC	NC	↑ 1.8	↑ 1.7
% Change from Previous Season	↑ 4.7	↑ 4.6	↑ 1.0	↑ 5.5

	Top 5 States - By Production							
	Planted (1,000 Acres)		Harvested (1,000 Acres)		Yield (Bushels/Acre)		Production (1,000 Bushels)	
		% Δ PY		% Δ PY		% Δ PY		% Δ PY
Illinois	10,600	↑ 2.9	10,550	↑ 2.9	64.0	↑ 6.7	675,200	↑ 9.8
Iowa	10,100	↑ 6.9	10,020	↑ 6.9	61.0	↑ 13.0	611,220	↑ 20.8
Minnesota	7,700	↑ 3.4	7,630	↑ 3.4	49.0	↓ 2.0	373,870	↑ 1.3
Indiana	5,700	↓ 0.9	5,690	↓ 0.7	60.0	↑ 1.7	341,400	↑ 1.0
Nebraska	5,600	↑ 7.7	5,550	↑ 7.6	61.0	↑ 5.2	338,550	↑ 13.1



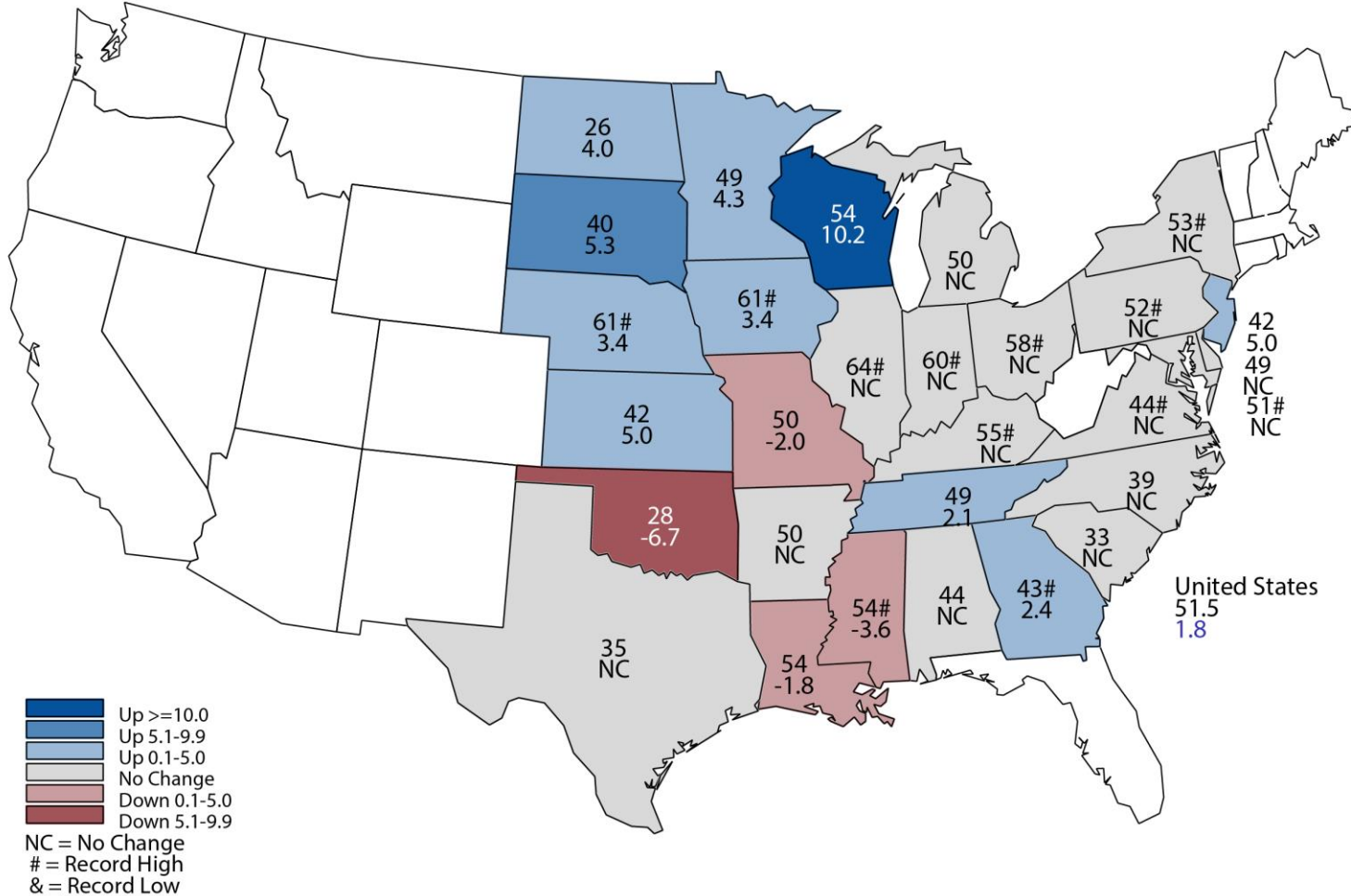
Soybean Yield United States

Bushels per Acre



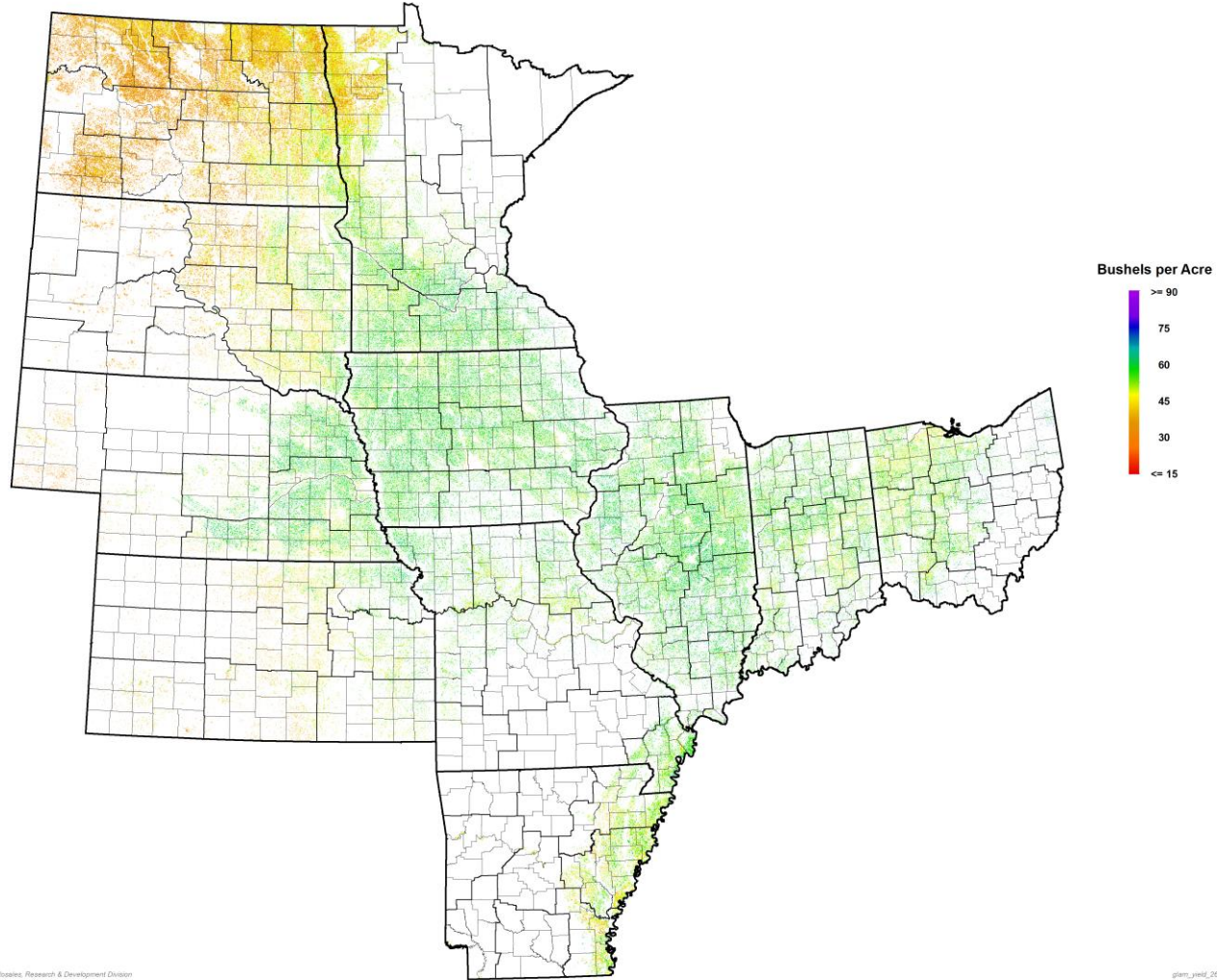
October 2021 Soybean Yield

Bushels and Percent Change from Previous Month



October 2021 Soybeans

NASA Terra MODIS Modeled Yield



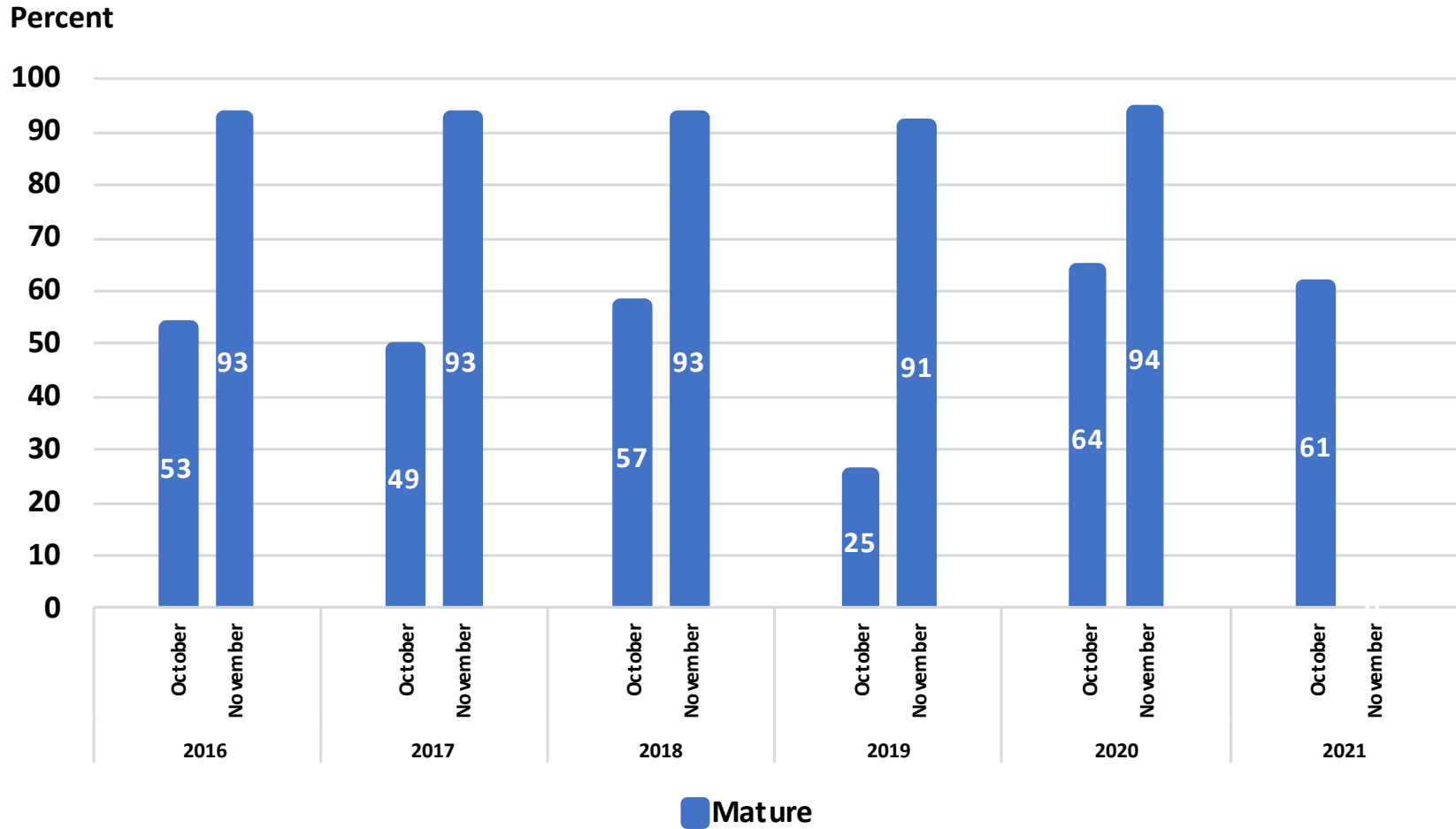
David M. Johnson & Arthur Roseboro, Research & Development Division

glam_yield_265Integration_2002-20_2021_soy_us_hqos_10/4/2021



October 2021 Soybean Objective Yield

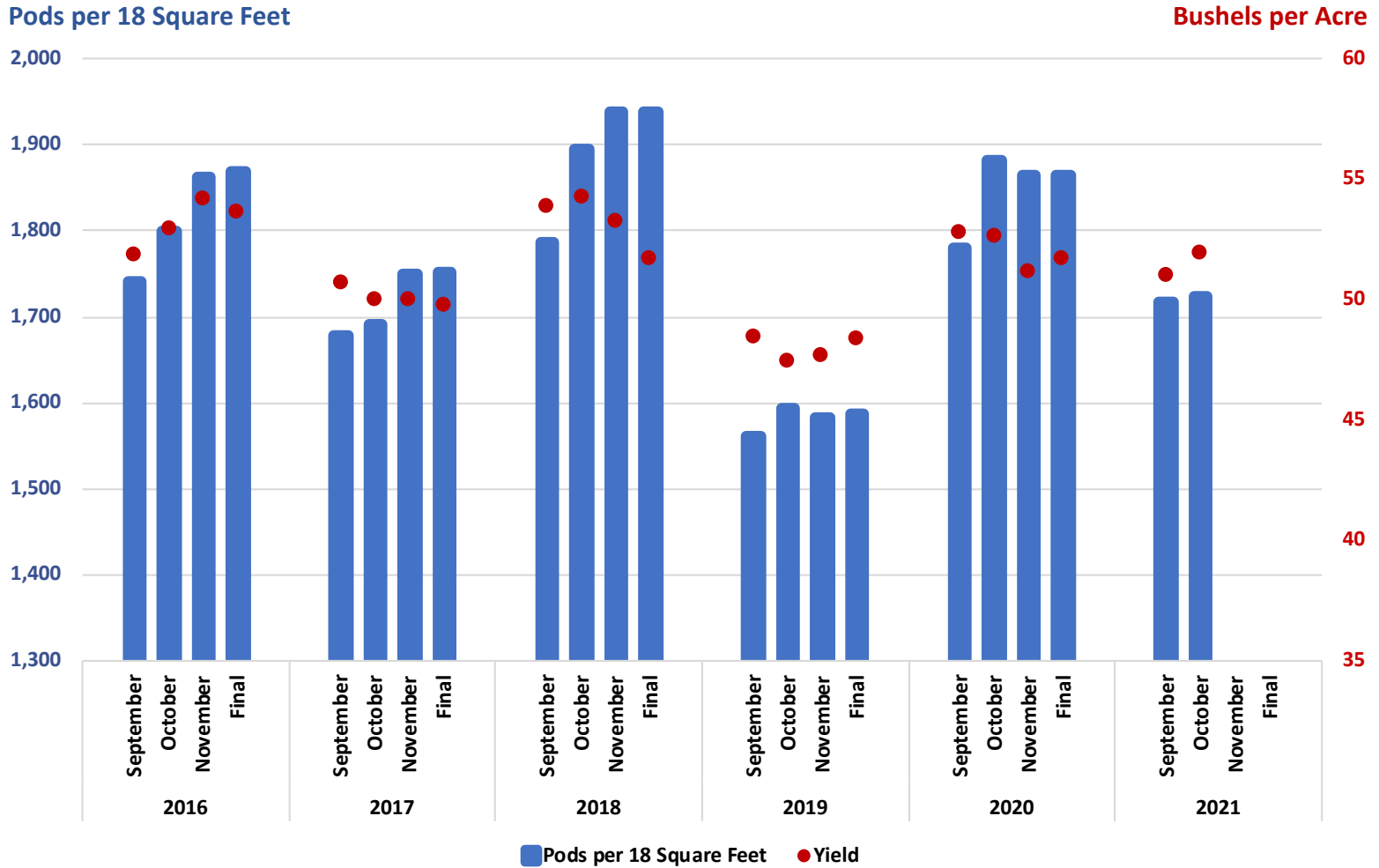
Percent of Samples Processed in the Lab





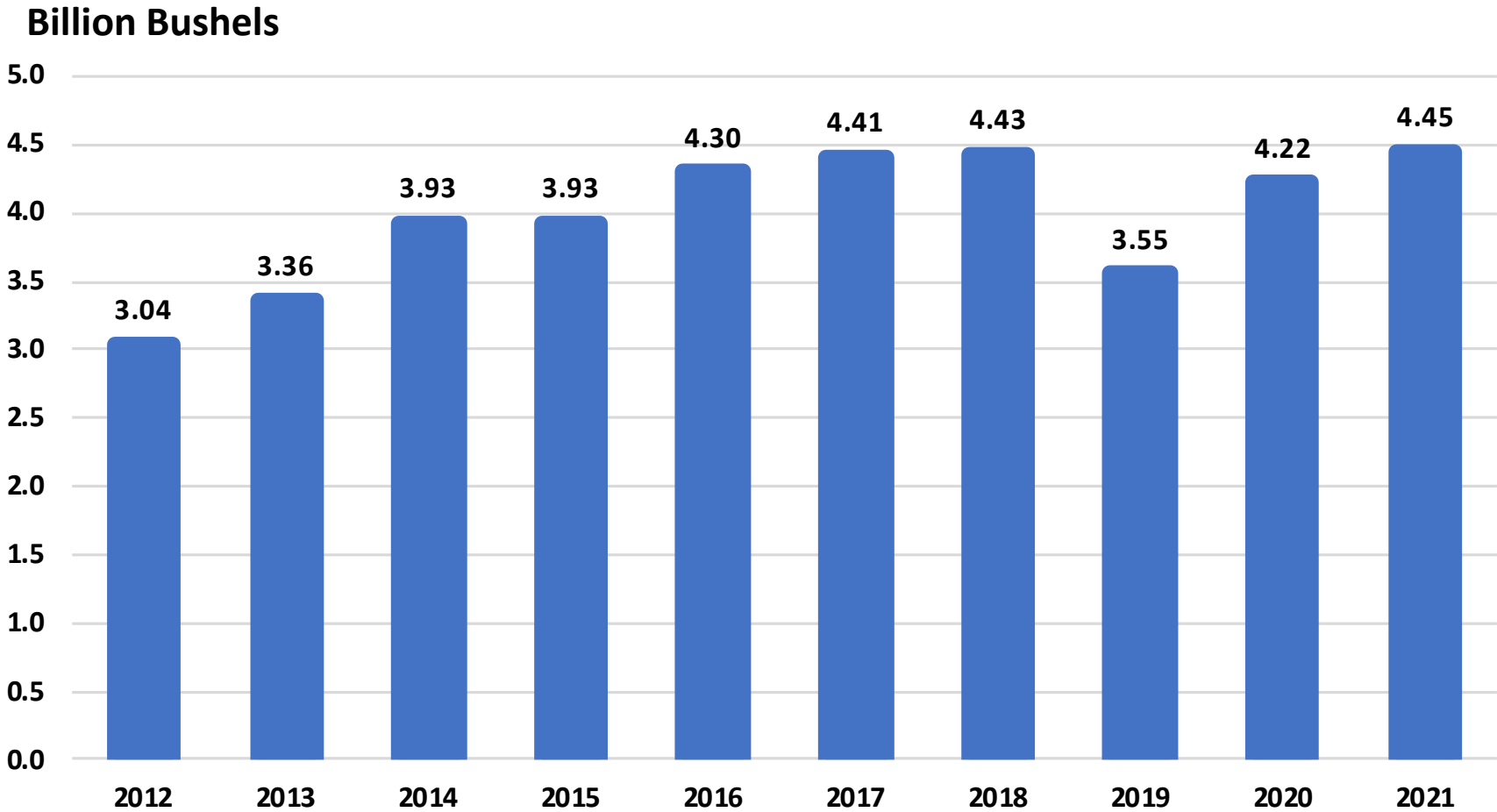
October 2021 Soybean Objective Yield

Pods per 18 Square Feet and Yield for 11 State Region



Soybean Production

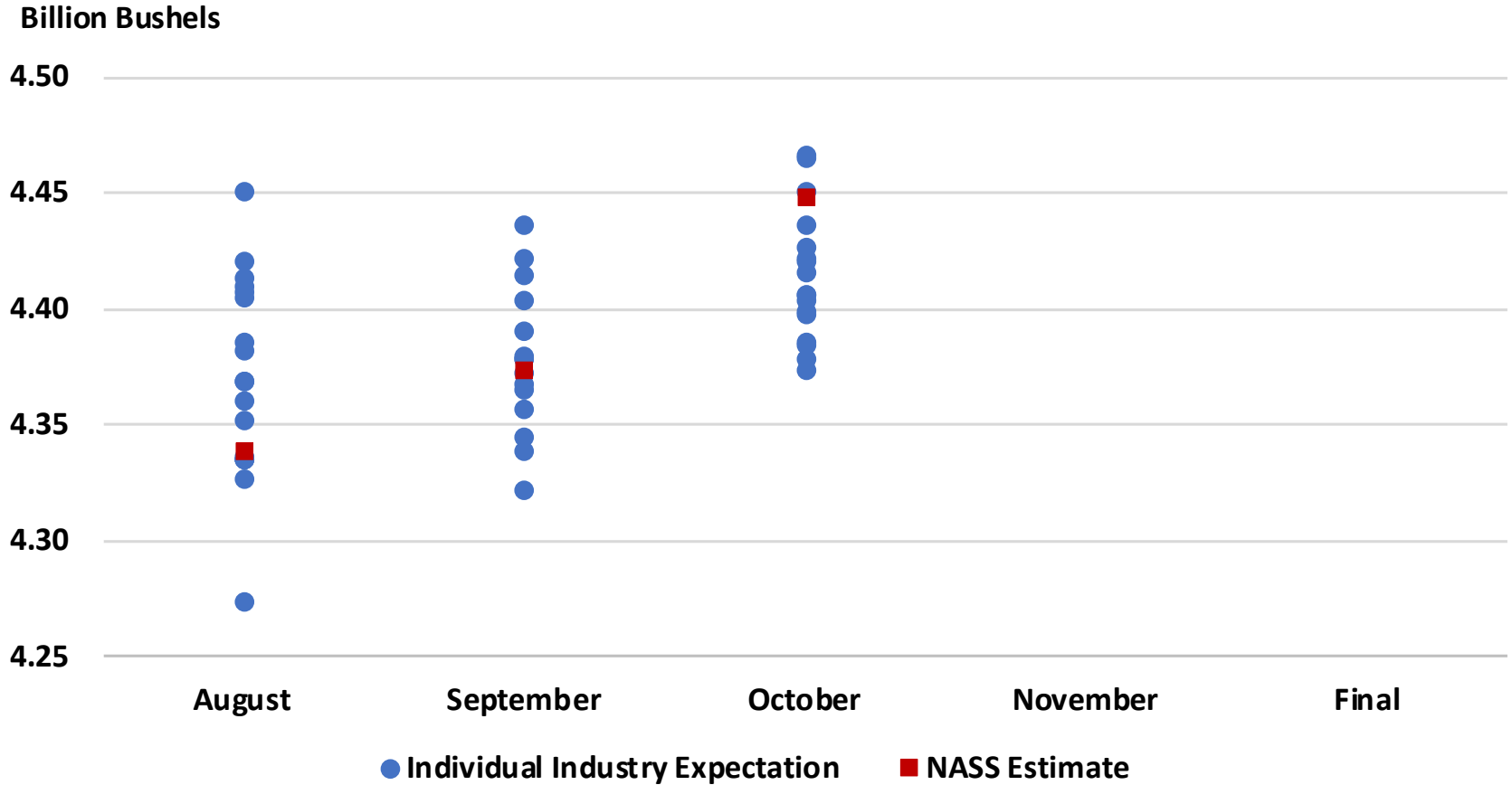
United States





2021 U.S. Soybean Production

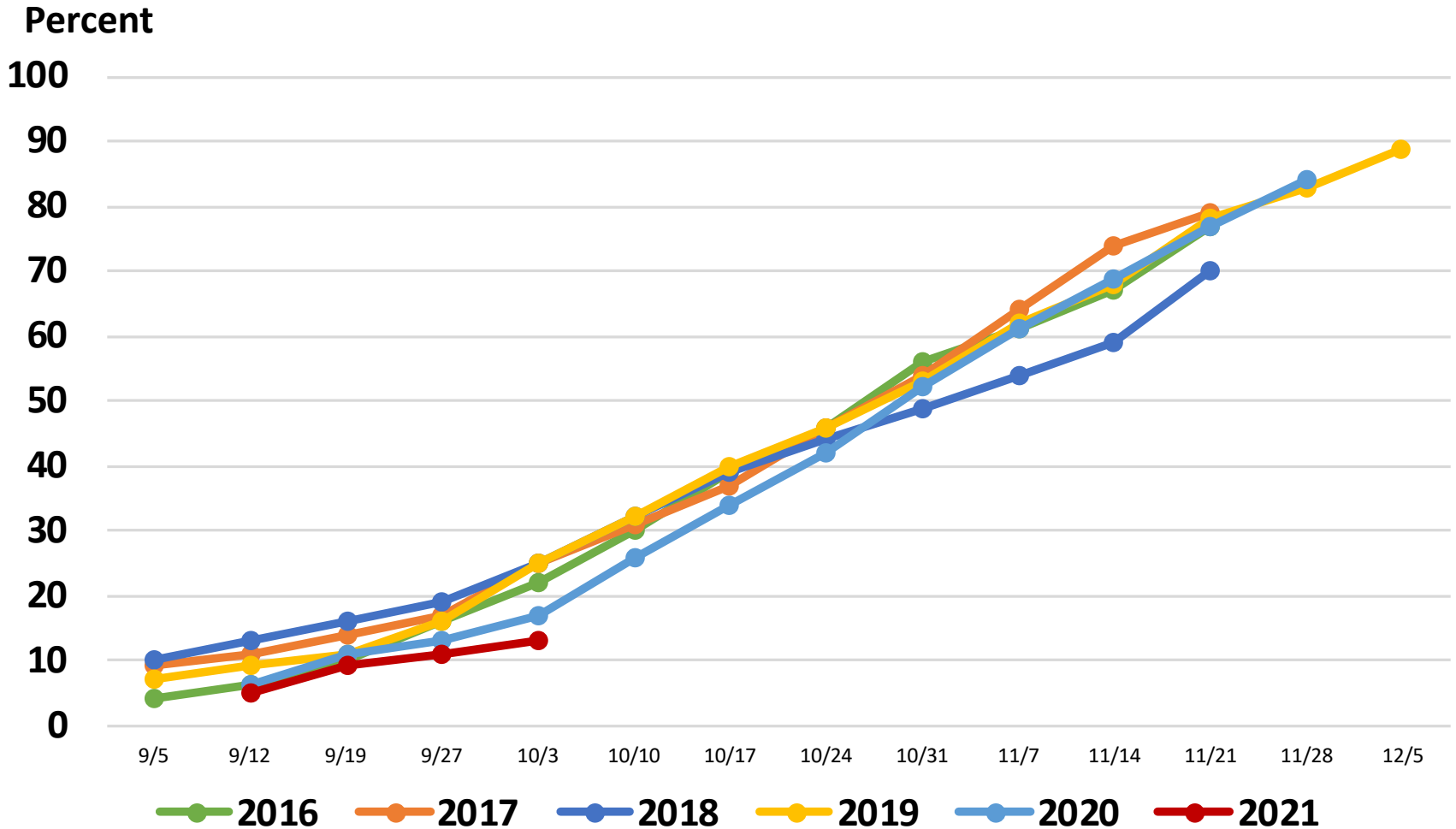
Industry Expectations vs NASS





United States Cotton Progress

Percent Harvested





October 2021 Cotton

Acreage, Yield, and Production

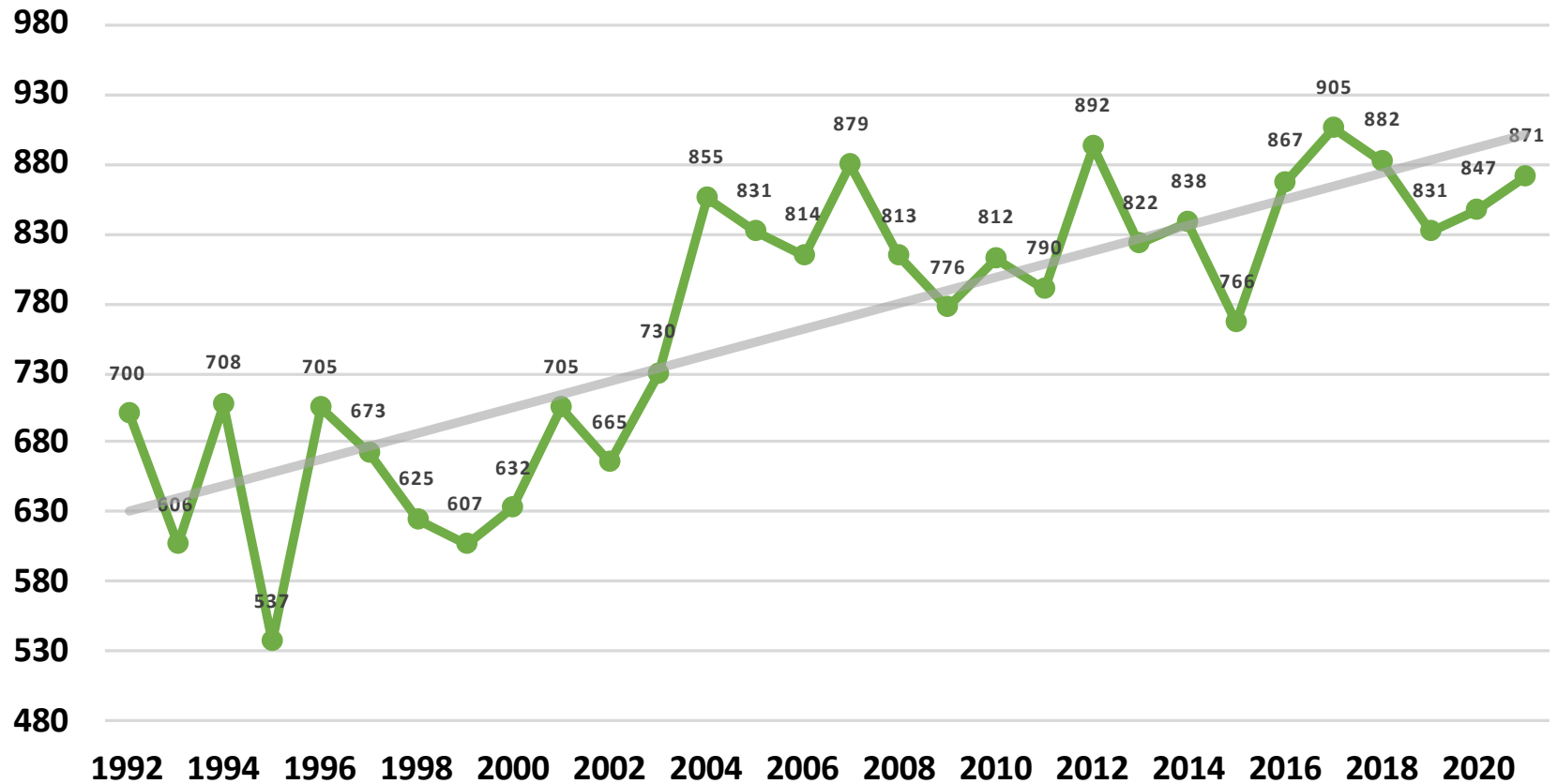
	Planted (1,000 Acres)	Harvested (1,000 Acres)	Yield (Pounds/Acre)	Production (1,000 Bales)
United States	11,191	9,922	871	18,004
% Change from Previous Estimate	NC	NC	↓ 2.7	↓ 2.7
% Change from Previous Season	↓ 7.5	↑ 19.9	↑ 2.8	↑ 23.3

	Top 5 States - By Production							
	Planted (1,000 Acres)		Harvested (1,000 Acres)		Yield (Pounds/Acre)		Production (1,000 Bales)	
		% Δ PY		% Δ PY		% Δ PY		% Δ PY
Texas	6,367	↓ 6.9	5,266	↑ 63.0	732.0	↑ 6.9	8,032	↑ 74.1
Georgia	1,170	↓ 1.7	1,160	↓ 1.7	931.0	↑ 5.0	2,250	↑ 3.2
Arkansas	475	↓ 9.5	470	↓ 9.6	1,226.0	↑ 4.0	1,200	↓ 6.0
Mississippi	445	↓ 16.0	430	↓ 18.1	1,150.0	↑ 6.6	1,030	↓ 12.7
Missouri	315	↑ 6.8	310	↑ 8.0	1,285.0	↑ 12.3	830	↑ 21.3

Cotton Yield

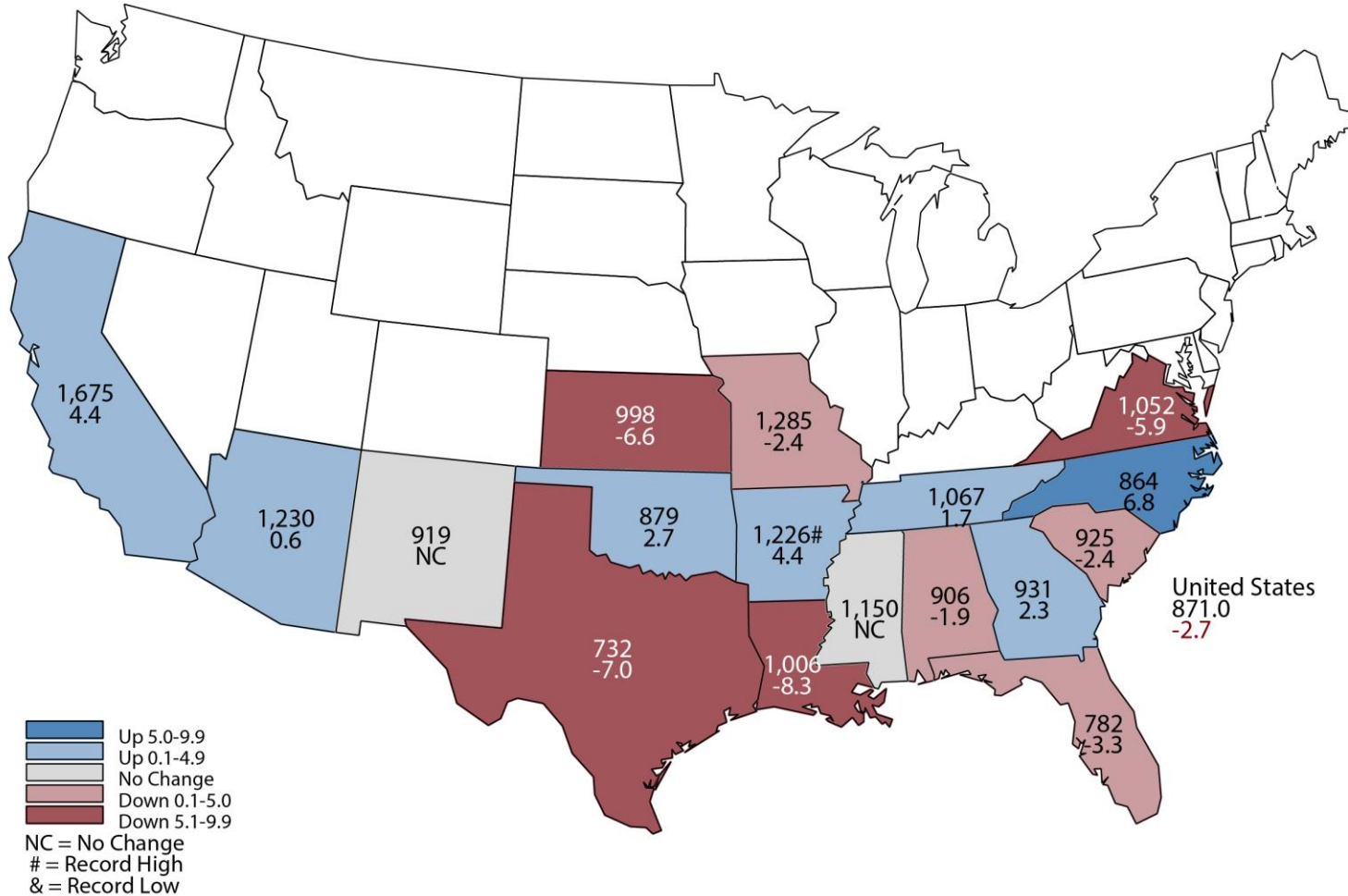
United States

Pounds per Acre



October 2021 Cotton Yield

Pounds and Percent Change from Previous Month

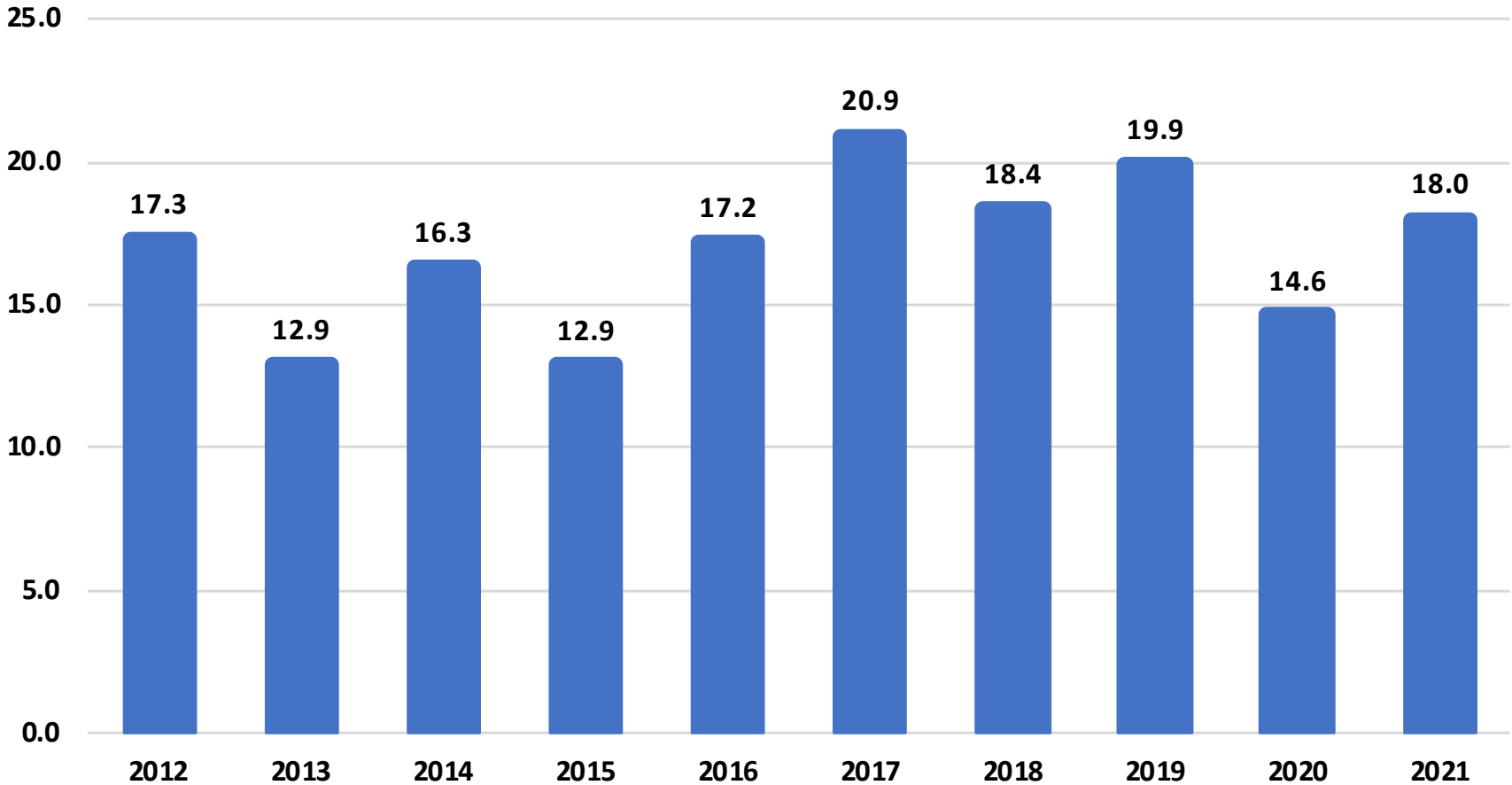




Cotton Production

United States

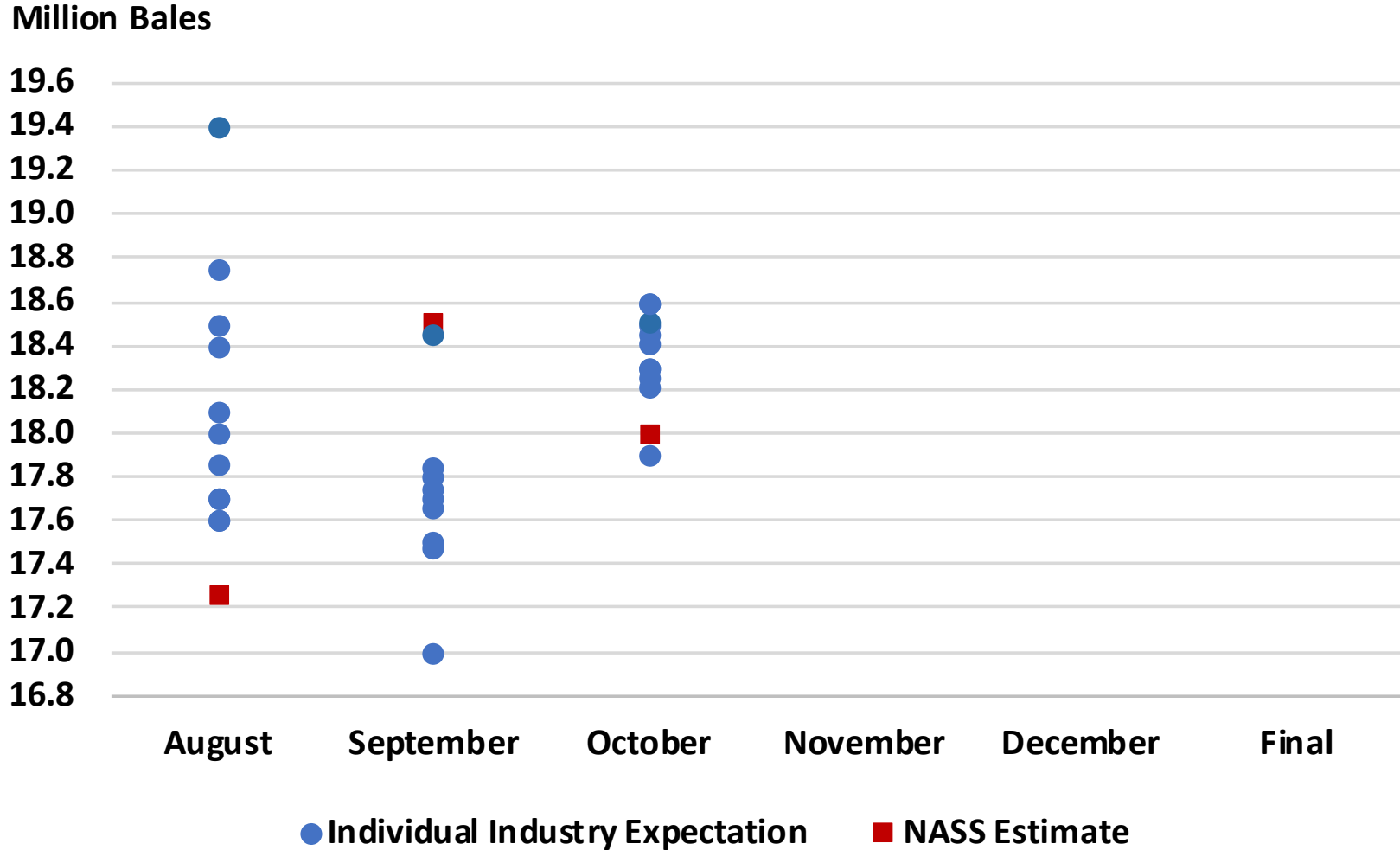
Million Bales





2021 U.S. Cotton Production

Industry Expectations vs NASS





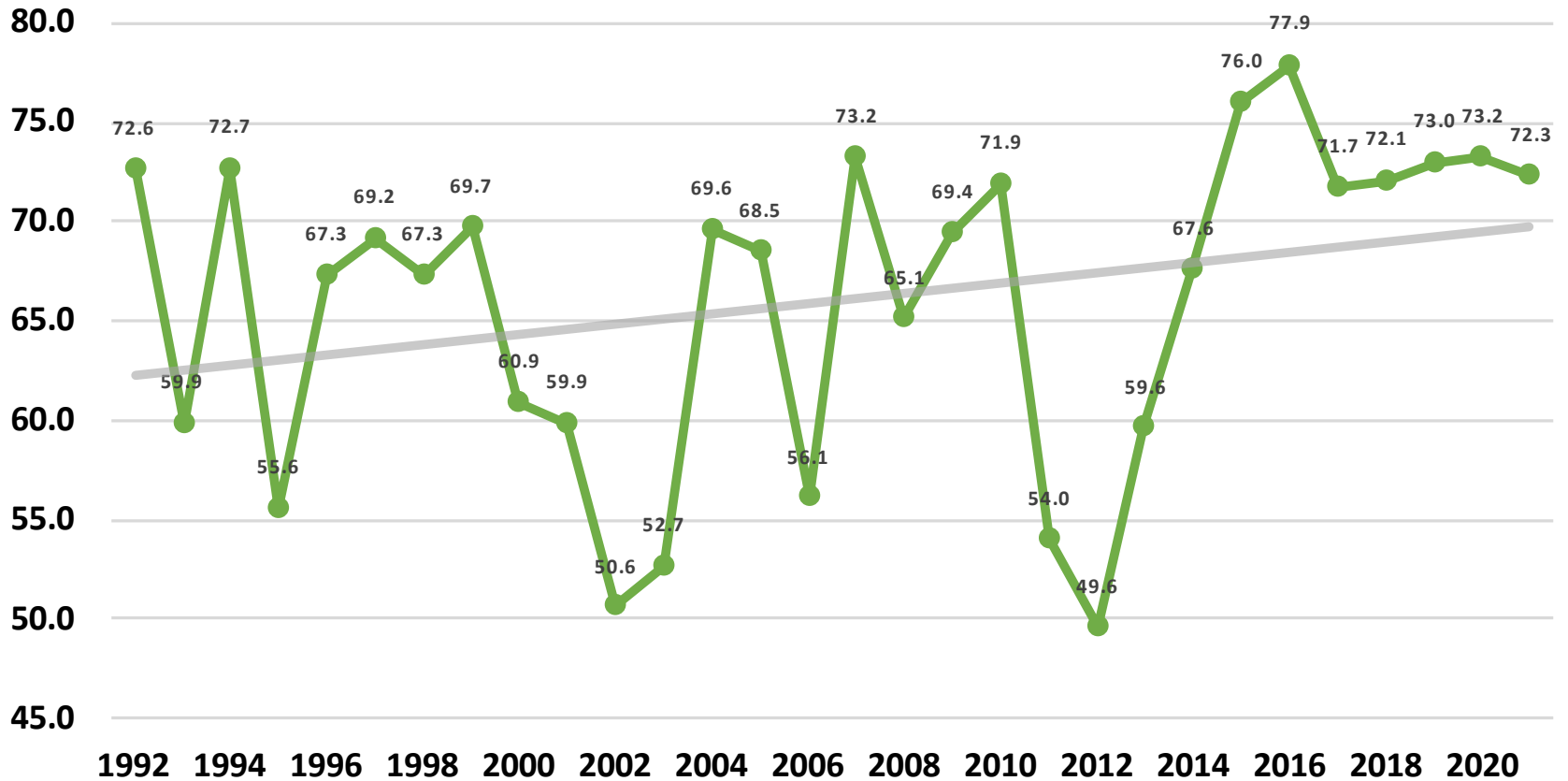
October 2021 Sorghum Acreage, Yield, and Production

	Planted (1,000 Acres)	Harvested (1,000 Acres)	Yield (Bushels/Acre)	Production (1,000 Bushels)
United States	7,340	6,520	72.3	471,450
% Change from Previous Estimate	NC	NC	↑ 3.7	↑ 3.8
% Change from Previous Season	↑ 24.8	↑ 28.0	↓ 1.2	↑ 26.4

	Top 5 States - By Production							
	Planted (1,000 Acres)		Harvested (1,000 Acres)		Yield (Bushels/Acre)		Production (1,000 Bushels)	
		% Δ PY		% Δ PY		% Δ PY		% Δ PY
Kansas	3,600	↑ 20.0	3,350	↑ 19.6	80.0	↓ 5.9	268,000	↑ 12.6
Texas	2,150	↑ 19.4	1,830	↑ 22.0	68.0	↑ 7.9	124,440	↑ 31.7
Oklahoma	430	↑ 41.0	355	↑ 54.3	62.0	↑ 37.8	22,010	↑ 112.7
Nebraska	320	↑ 64.1	265	↑ 76.7	81.0	↓ 11.0	21,465	↑ 57.3
Colorado	500	↑ 35.1	435	↑ 70.6	45.0	↑ 125.0	19,575	↑ 283.8

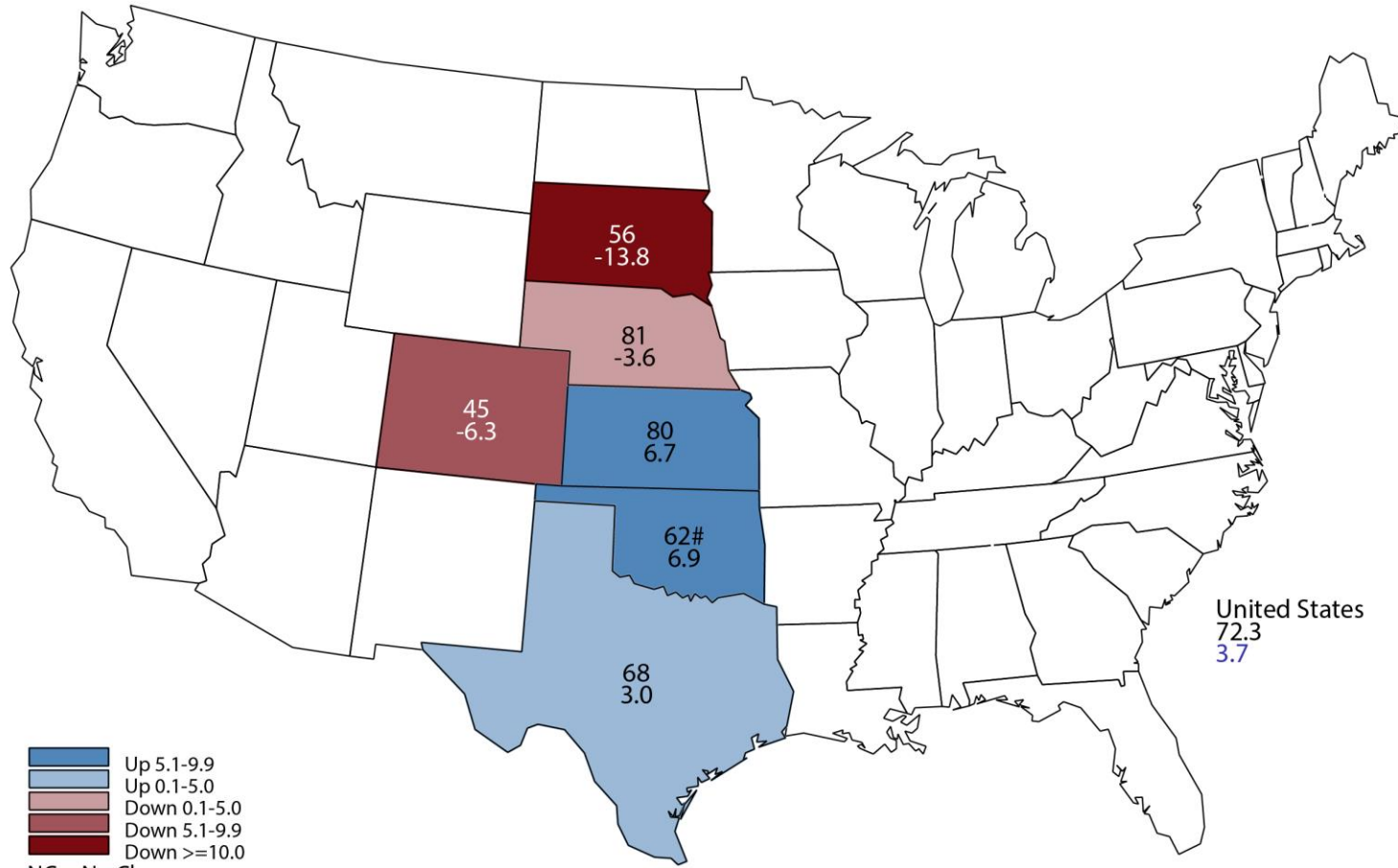
Sorghum Yield United States

Bushels per Acre



October 2021 Sorghum Yield

Bushels and Percent Change from Previous Month

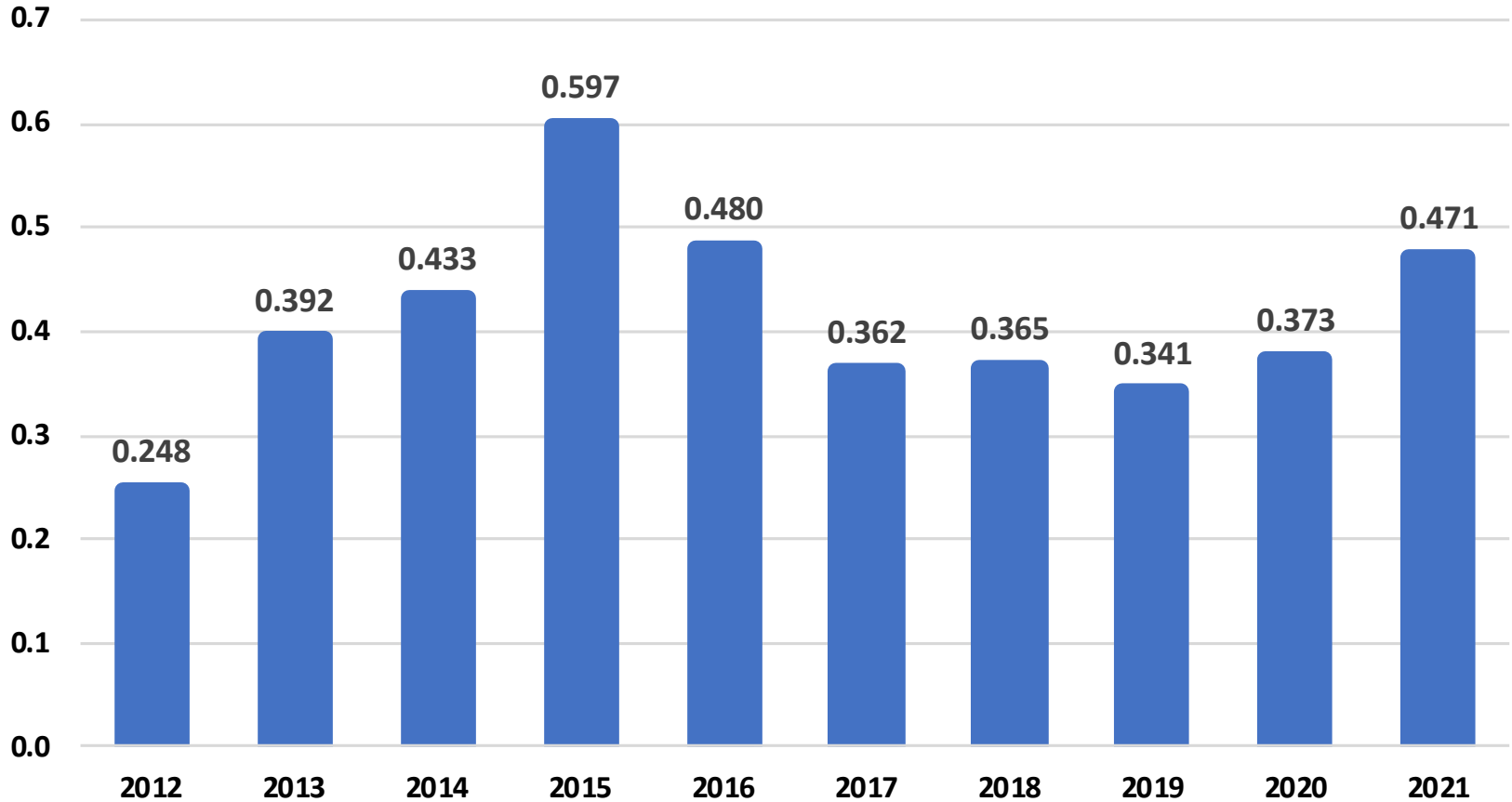


■ Up 5.1-9.9
■ Up 0.1-5.0
■ Down 0.1-5.0
■ Down 5.1-9.9
■ Down >=10.0
 NC = No Change
 # = Record High
 & = Record Low

Sorghum Production

United States

Billion Bushels





October 2021 Field Crops Acreage, Yield, and Production

	Planted (1,000 Acres)	Harvested (1,000 Acres)	Yield (Units per Acre)	Unit	Production (1,000 Units)	Unit
Canola	2,152	2,105	1,119	Lb	2,354,080	Lb
% Change from Previous Estimate	↑ 7.4	↑ 7.6	N/A		N/A	
% Change from Previous Season	↑ 18.0	↑ 17.7	↓ 42.1		↓ 31.8	
Dry Edible Beans	1,399	1,341	1,686	Lb	22,609	Cwt
% Change from Previous Estimate	↓ 3.8	↓ 3.6	↑ 0.7		↓ 3.0	
% Change from Previous Season	↓ 19.6	↓ 20.0	↓ 14.2		↓ 31.4	
Alfalfa Hay	N/A	16,123	2.99	Ton	48,156	Ton
% Change from Previous Estimate	N/A	NC	↑ 0.7		↑ 0.7	
% Change from Previous Season	N/A	↓ 0.7	↓ 8.6		↓ 9.3	
Other Hay	N/A	35,414	2.04	Ton	72,326	Ton
% Change from Previous Estimate	N/A	NC	↑ 2.0		↑ 2.0	
% Change from Previous Season	N/A	↓ 1.6	↓ 0.5		↓ 1.9	
Peanuts	1,580	1,533	4,105	Lb	6,292,250	Lb
% Change from Previous Estimate	NC	NC	↓ 0.9		↓ 0.9	
% Change from Previous Season	↓ 5.0	↓ 5.1	↑ 7.7		↑ 2.2	



October 2021 Field Crops

Acreage, Yield, and Production

	Planted (1,000 Acres)	Harvested (1,000 Acres)	Yield (Units per Acre)	Unit	Production (1,000 Units)	Unit
Rice	2,541	2,499	7,625	Lb	190,546	Cwt
% Change from Previous Estimate	NC	NC	↑ <0.1		↑ <0.1	
% Change from Previous Season	↓ 16.3	↓ 16.3	↑ 0.1		↓ 16.3	
Sugarbeets	1,162	1,151	31.0	Ton	35,675	Ton
% Change from Previous Estimate	↑ 0.1	↑ 0.1	↑ 3.0		↑ 3.1	
% Change from Previous Season	↓ 0.1	↑ 0.7	↑ 5.4		↑ 6.1	
Sugarcane	N/A	932	36.8	Ton	34,295	Ton
% Change from Previous Estimate	N/A	↑ 0.1	↓ 1.3		↓ 1.3	
% Change from Previous Season	N/A	↓ 1.6	↓ 3.4		↓ 5.0	
Sunflower	1,280	1,223	1,554	Lb	1,900,920	Lb
% Change from Previous Estimate	↓ 7.0	↓ 6.8	N/A		N/A	
% Change from Previous Season	↓ 25.5	↓ 26.6	↓ 13.2		↓ 36.3	
Tobacco	N/A	221	2,097	Lb	463,835	Lb
% Change from Previous Estimate	N/A	↓ 0.9	↓ 0.2		↓ 1.1	
% Change from Previous Season	N/A	↑ 11.7	↑ 6.7		↑ 19.1	



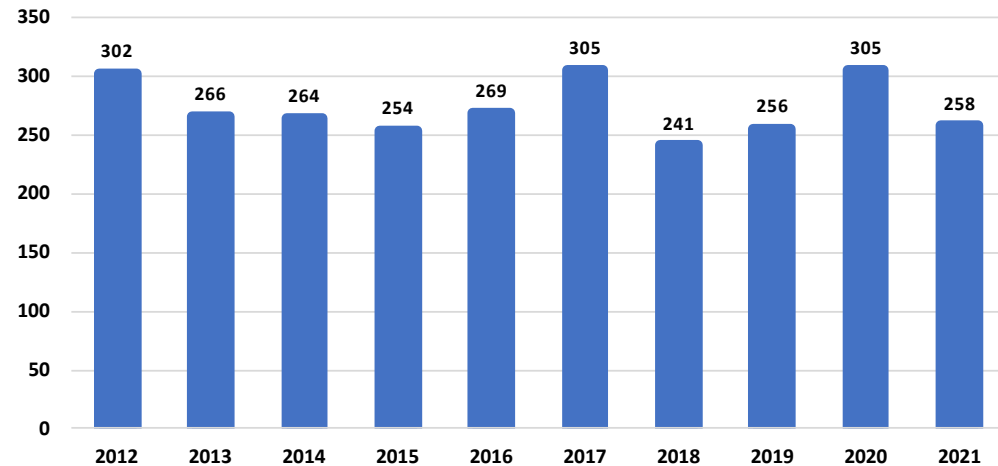
October 2021 Noncitrus Fruits and Nuts Production



	Production (1,000 Units)	Unit
Pecans	258,000	Lb
% Change from Previous Estimate	N/A	
% Change from Previous Season	↓ 15.5	

**Pecan Production
United States**

Million Pounds





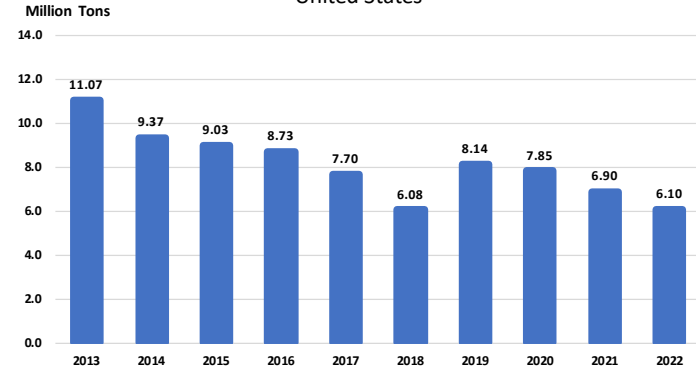
October 2021 Citrus Utilized Production

Production

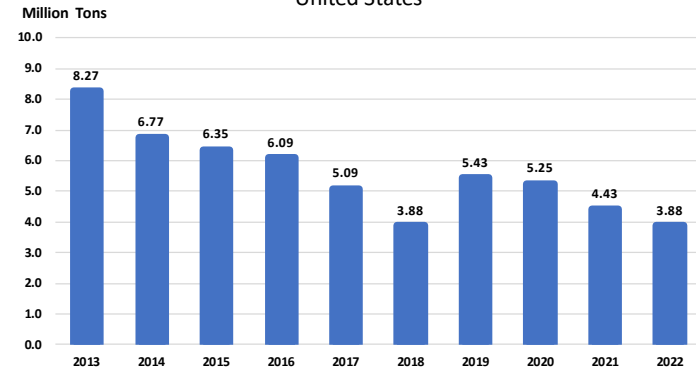
(1,000 Tons)

All Oranges	3,878
% Change from Previous Estimate	N/A
% Change from Previous Season	↓ 12.4
Non-Valencia Oranges	2,274
% Change from Previous Estimate	N/A
% Change from Previous Season	↓ 15.4
Valencia Oranges	1,604
% Change from Previous Estimate	N/A
% Change from Previous Season	↓ 7.7
Grapefruit	442
% Change from Previous Estimate	N/A
% Change from Previous Season	↑ 3.8
Lemons	892
% Change from Previous Estimate	N/A
% Change from Previous Season	↑ 0.9
Tangerines	883
% Change from Previous Estimate	N/A
% Change from Previous Season	↓ 24.3

All Citrus Production
United States



All Orange Production
United States





Selected Upcoming Reports



October 22	Cattle on Feed Cotton Ginnings Rice Stocks
October 29	Agricultural Prices
November 1	Cotton System Fats and Oils Flour Milling Grain Crushings
November 9	Cotton Ginnings Crop Production

<https://www.nass.usda.gov/Publications/index.php>



USDA Data Users' Meeting



2021 USDA Fall Virtual Data Users' Meeting

Oct. 13 & 14, 2021

FREE AND OPEN TO THE PUBLIC



USDA Fall Data Users' Meeting

October 13 & 14, 2021

12:00 p.m. – 3:00 p.m. ET

For more information and to register please go to

www.nass.usda.gov/Education_and_Outreach/Meeting/index.php

United States Department of Agriculture
National Agricultural Statistics Service

October 12, 2021



STAT CHAT SERIES

You can tweet questions in advance to [@usda_nass](https://twitter.com/usda_nass).

Join [@usda_nass](https://twitter.com/usda_nass) on Twitter using [#StatChat](https://twitter.com/hashtag/StatChat) to discuss the *Crop Production* report with Lance Honig.

TUES, OCT. 12 @ 1PM ET

#STATCHAT





All Reports Available At

www.nass.usda.gov

For Questions

(202) 720-2127

(800) 727-9540

nass@usda.gov