



United States Department of Agriculture  
**National Agricultural Statistics Service**

---

---

**July Crop Production**  
Executive Summary

Lance Honig, Chief  
Crops Branch



# Contents

Field Crops	Fruit and Nuts	Specialty Crops
Winter Wheat	Citrus	Tobacco
Other Spring Wheat	Apricots	
Durum Wheat	Almonds	
Barley		
Oats		



# Survey Overview

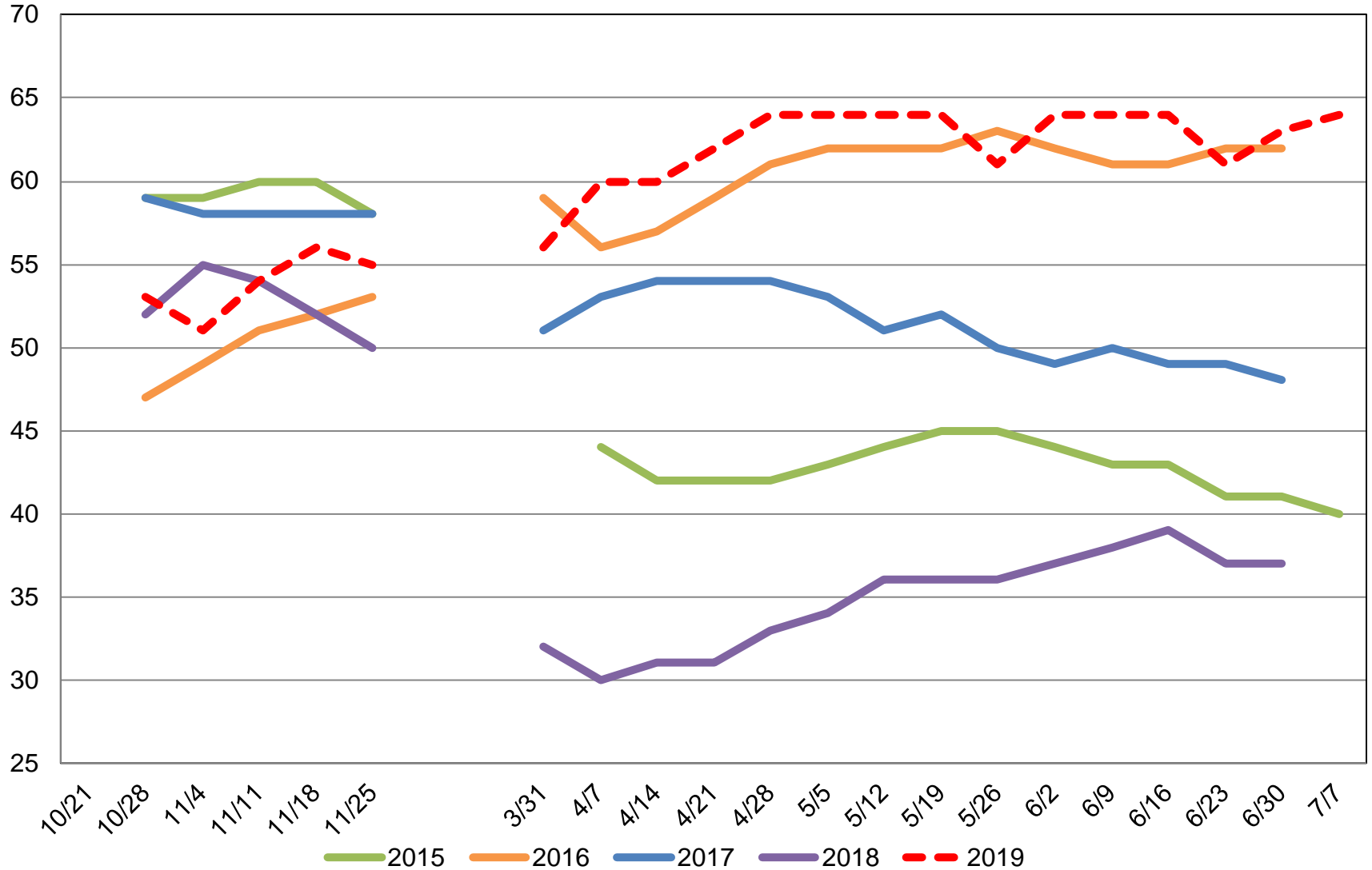
	Ag Yield	Objective Yield
Survey Type	Farmer Reported	Field Measurement
Crops Included	Winter, Other Spring, & Durum Wheat, Oats, Barley, Tobacco	Winter Wheat
States	34	10
Sample Size	5,989	1,040
Collection Period	June 29 – July 8	June 24 – July 1



# U.S. Winter Wheat Condition

## Percent Rated Good to Excellent

Percent

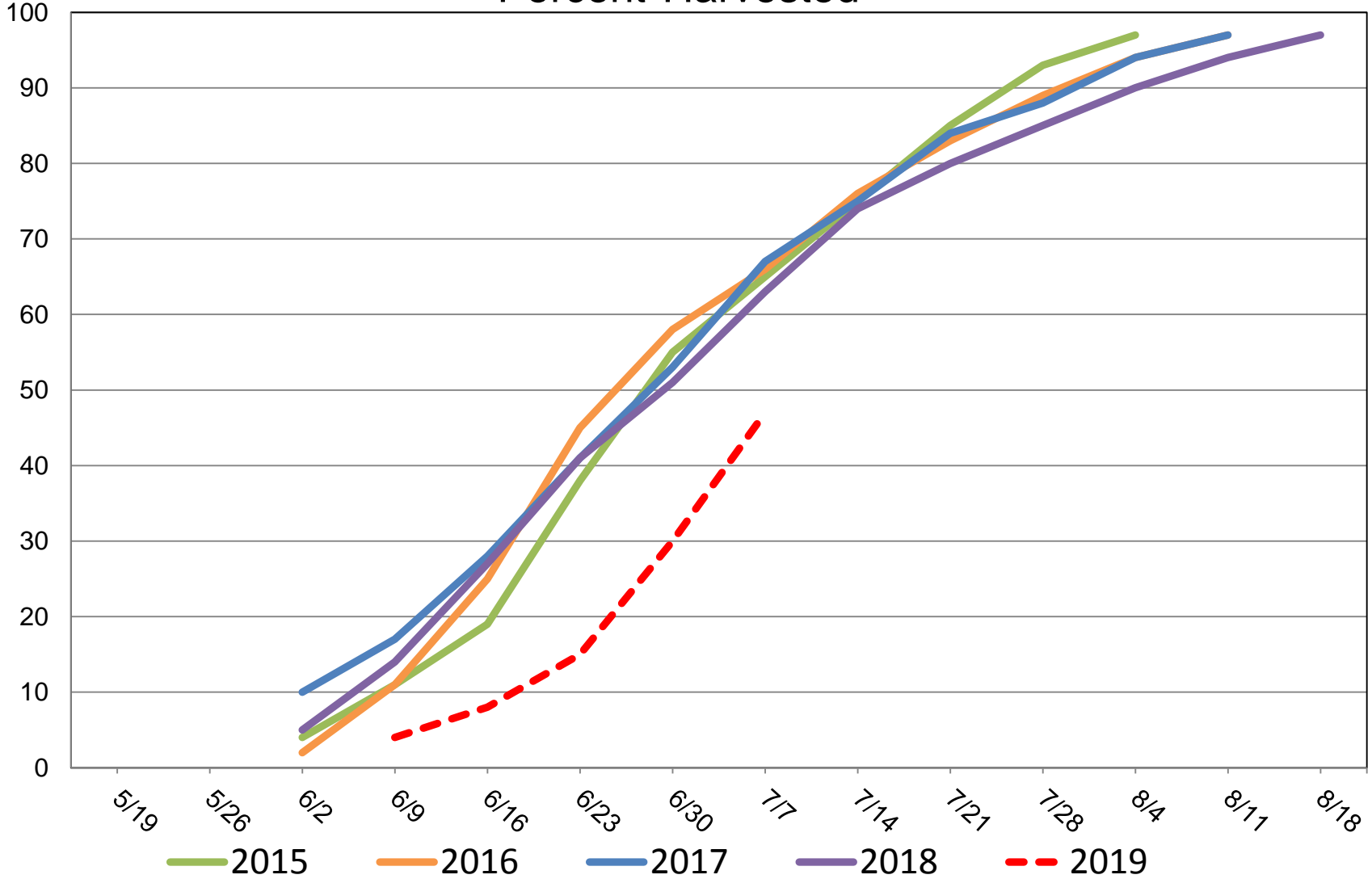




# U.S. Winter Wheat Progress

Percent

Percent Harvested



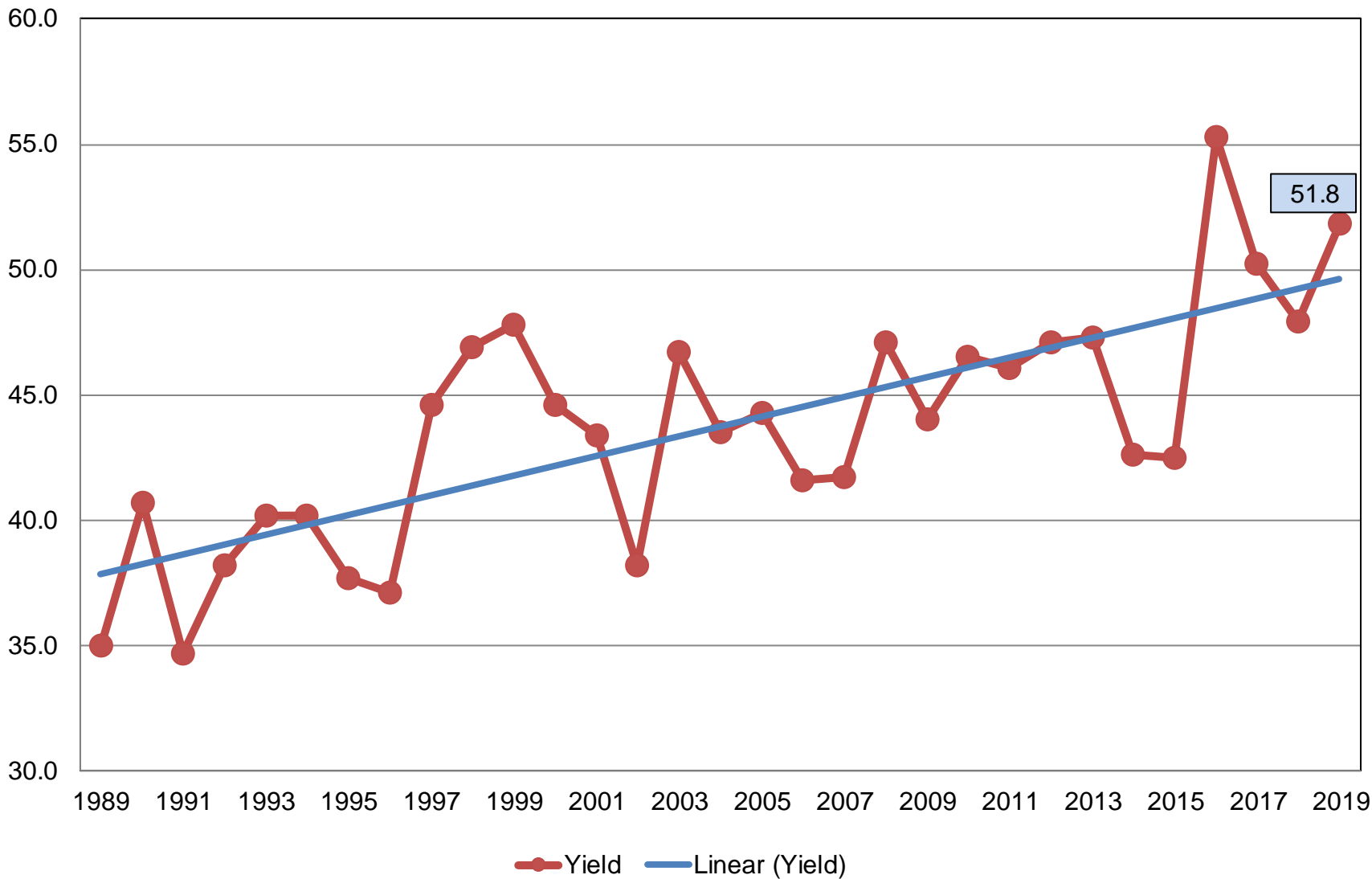


# July 2019 Crop Production

Crop	Unit	July 2019	% Change From Previous Forecast	% Change From Previous Season
Wheat, Winter				
Harvested	Mil Ac	24.9	NC	+0.7
Yield	Bu/Ac	51.8	+2.6	+8.1
Production	Bil Bu	1.29	+1.3	+9.0
Production by Class				
Hard Red	Mil Bu	804	+1.3	+21.5
Soft Red	Mil Bu	259	+0.3	-9.2
White	Mil Bu	227	+2.4	-3.9

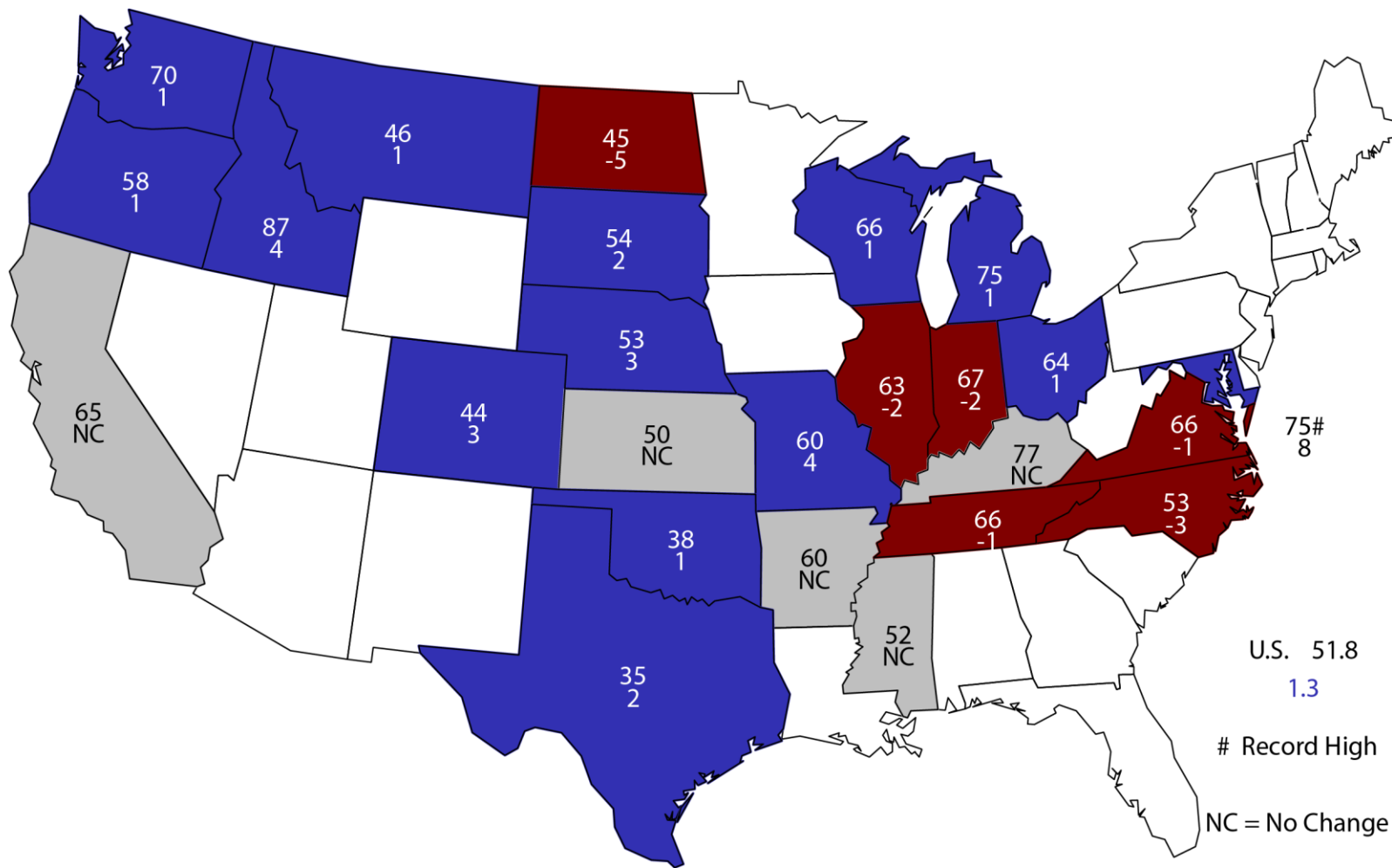
# Winter Wheat Yield United States

Bushels per Acre



# July 1, 2019 Winter Wheat Yield

## Bushels and Change From Previous Estimate







# Winter Wheat Objective Yield - July

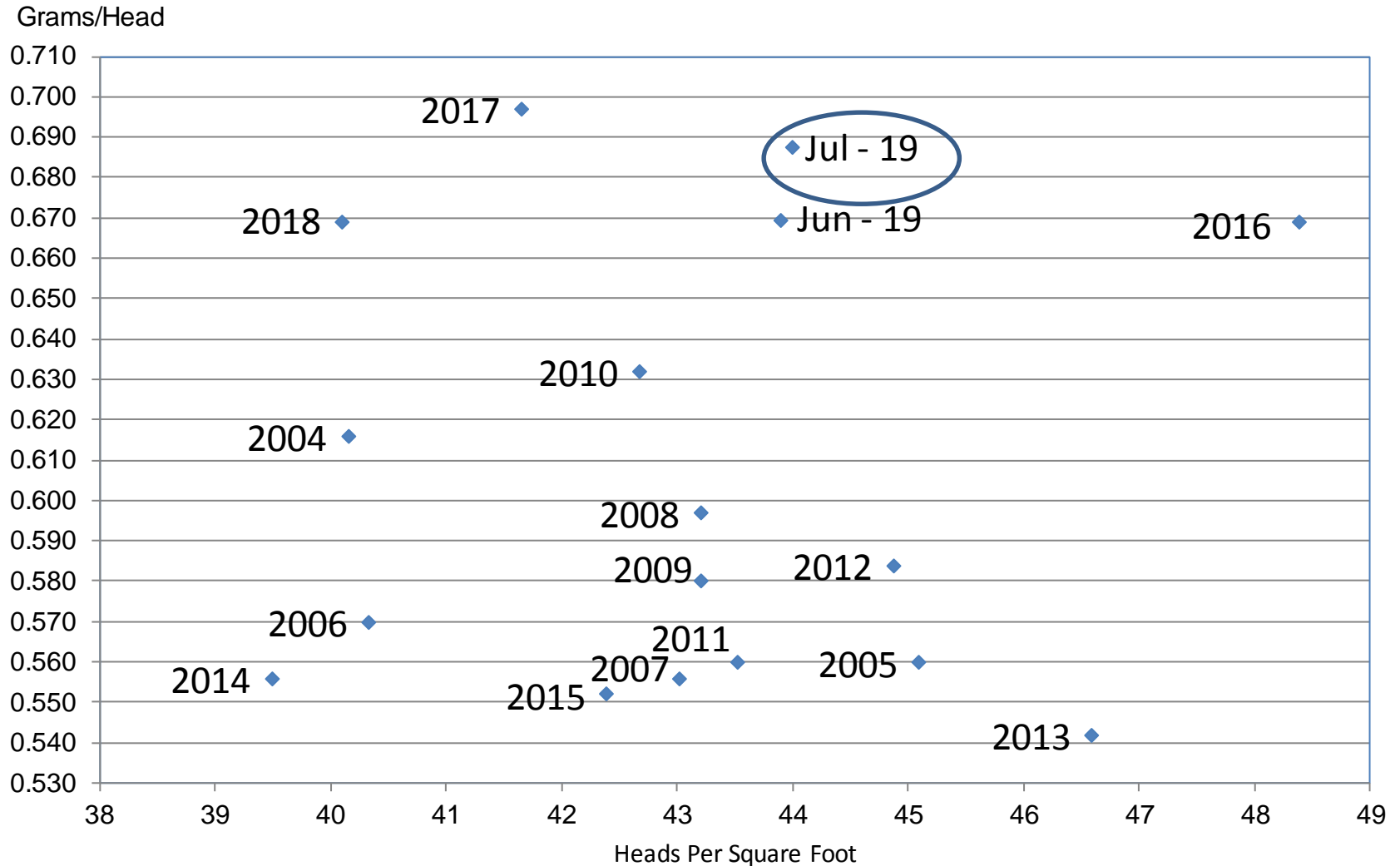
## Percent of Samples Processed in the Lab

Year	Mature <i>---Percent---</i>
2013	55
2014	58
2015	64
2016	68
2017	69
2018	69
2019	50



# Wheat Objective Yield Region

## Heads Per Square Foot vs. Implied Head Weight



Implied Head Weight = Published Yield / (Heads\*1.6006)

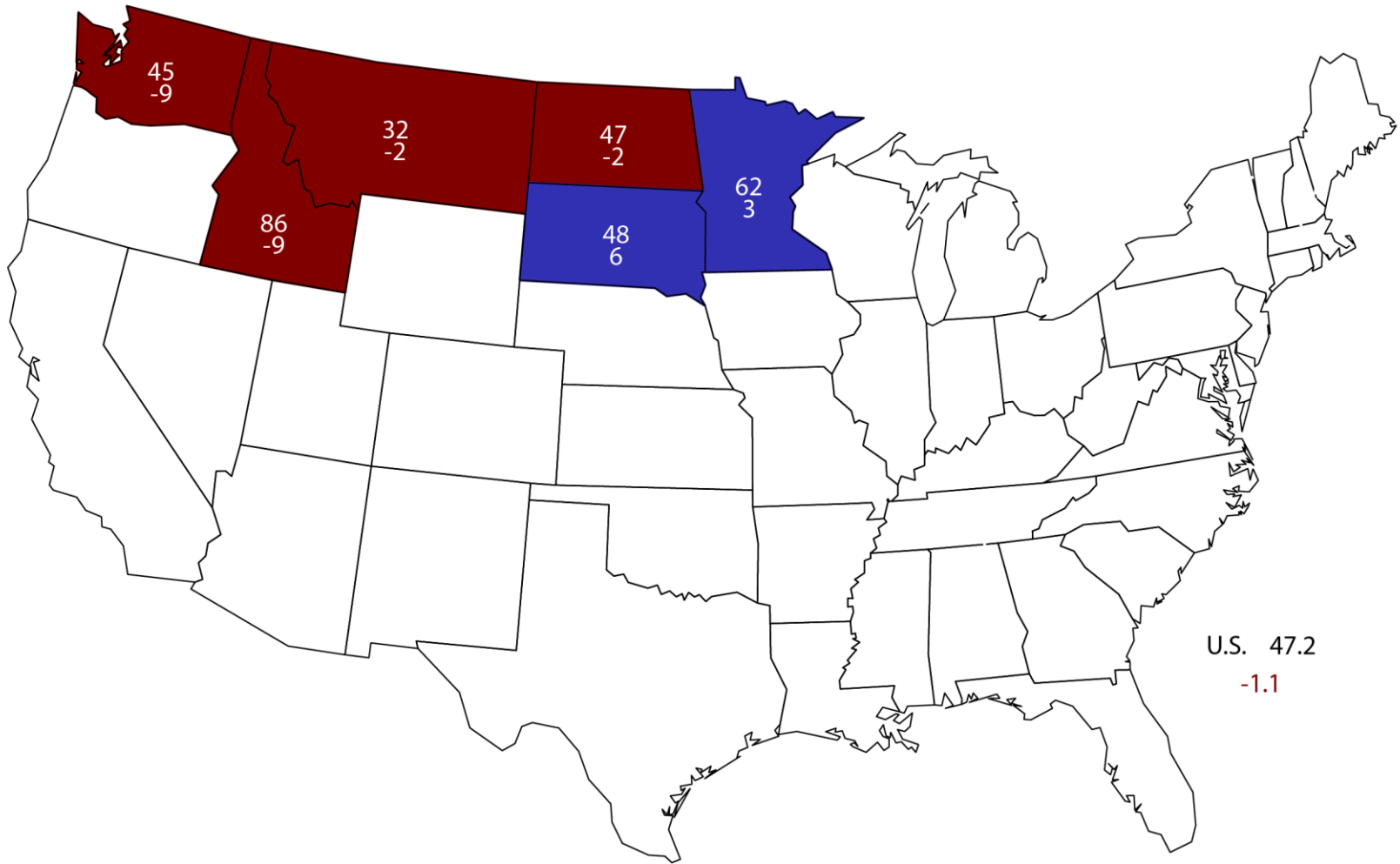


# July 2019 Crop Production

Crop	Unit	July 2019	% Change From Previous Forecast	% Change From Previous Season
Wheat, Other Spring				
Harvested	Mil Ac	12.1	NC	-6.0
Yield	Bu/Ac	47.2	NA	-2.3
Production	Mil Bu	572	NA	-8.2

# July 1, 2019 Other Spring Wheat Yield

## Bushels and Change From Previous Year



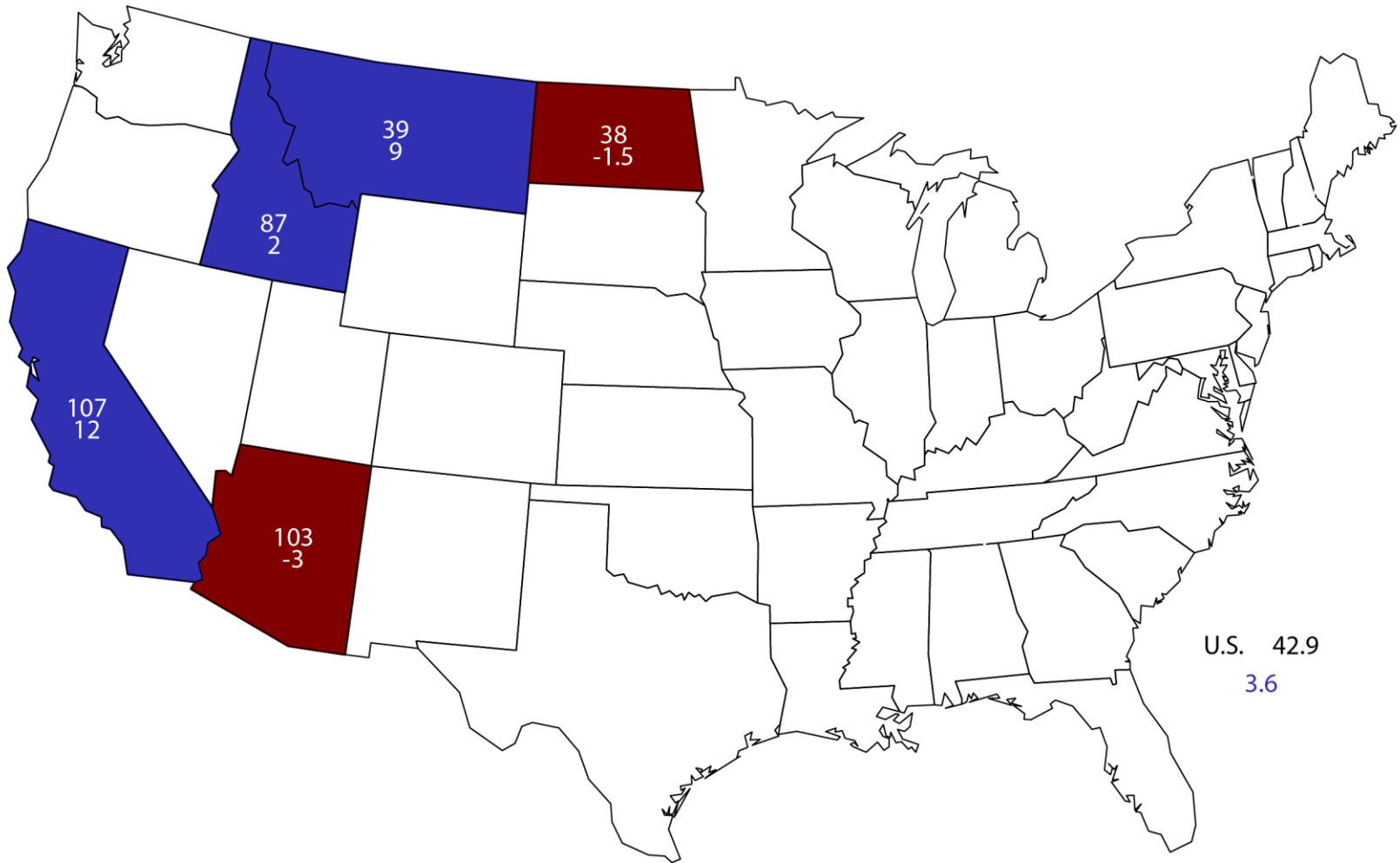


# July 2019 Crop Production

Crop	Unit	July 2019	% Change From Previous Forecast	% Change From Previous Season
Wheat, Durum				
Harvested	Mil Ac	1.36	NC	-31.1
Yield	Bu/Ac	42.9	NA	+9.2
Production	Mil Bu	58.1	NA	-24.8

# July 1, 2019 Durum Wheat Yield

## Bushels and Change From Previous Year



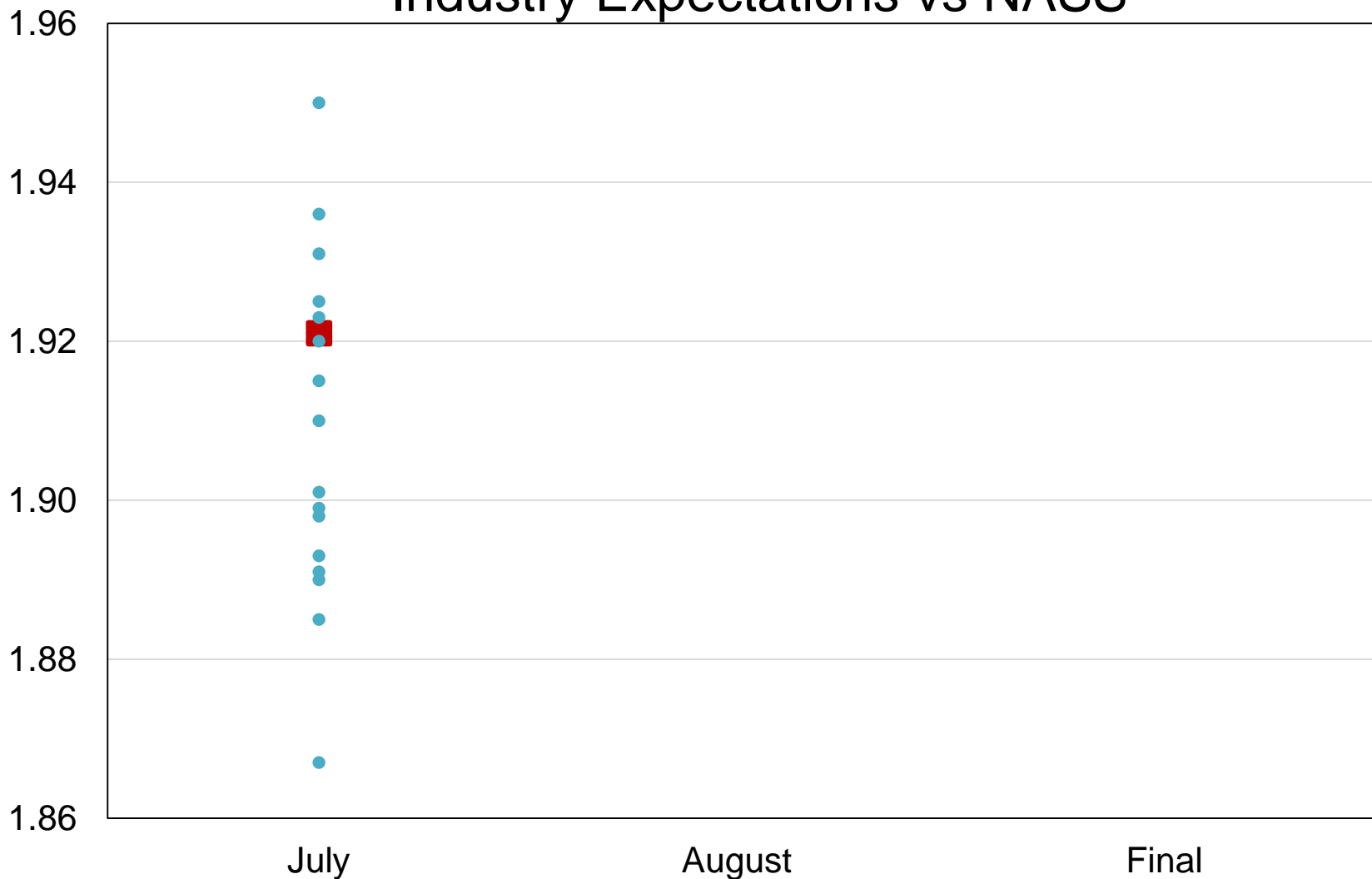


# July 2019 Crop Production

Crop	Unit	July 2019	% Change From Previous Forecast	% Change From Previous Season
All Wheat				
Harvested	Mil Ac	38.4	NC	-3.0
Yield	Bu/Ac	50.0	NA	+5.0
Production	Bil Bu	1.92	NA	+1.9

# 2019 United States All Wheat Production Industry Expectations vs NASS

Billion Bushels



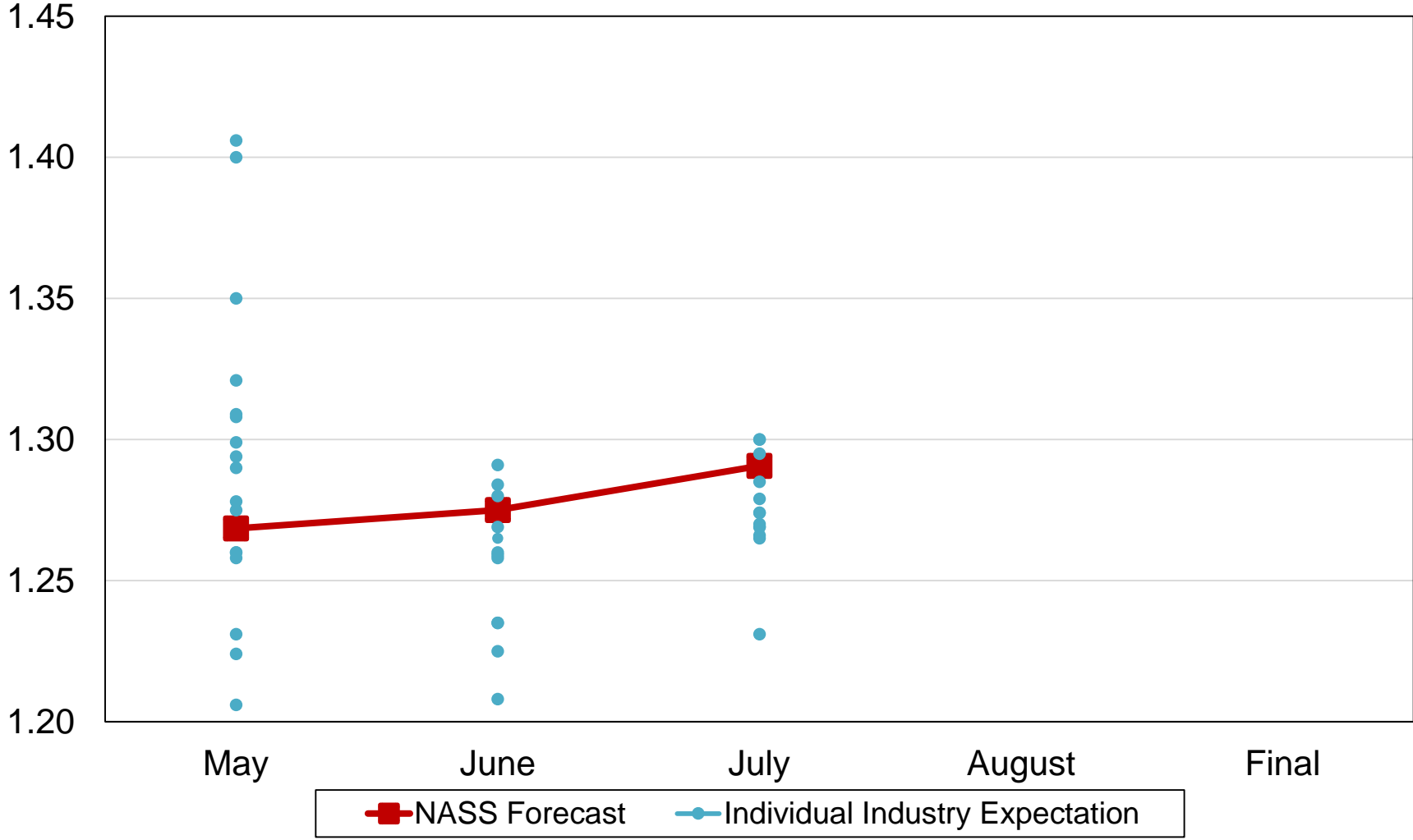
NASS Forecast      Individual Industry Expectation





# 2019 United States Winter Wheat Production Industry Expectations vs NASS

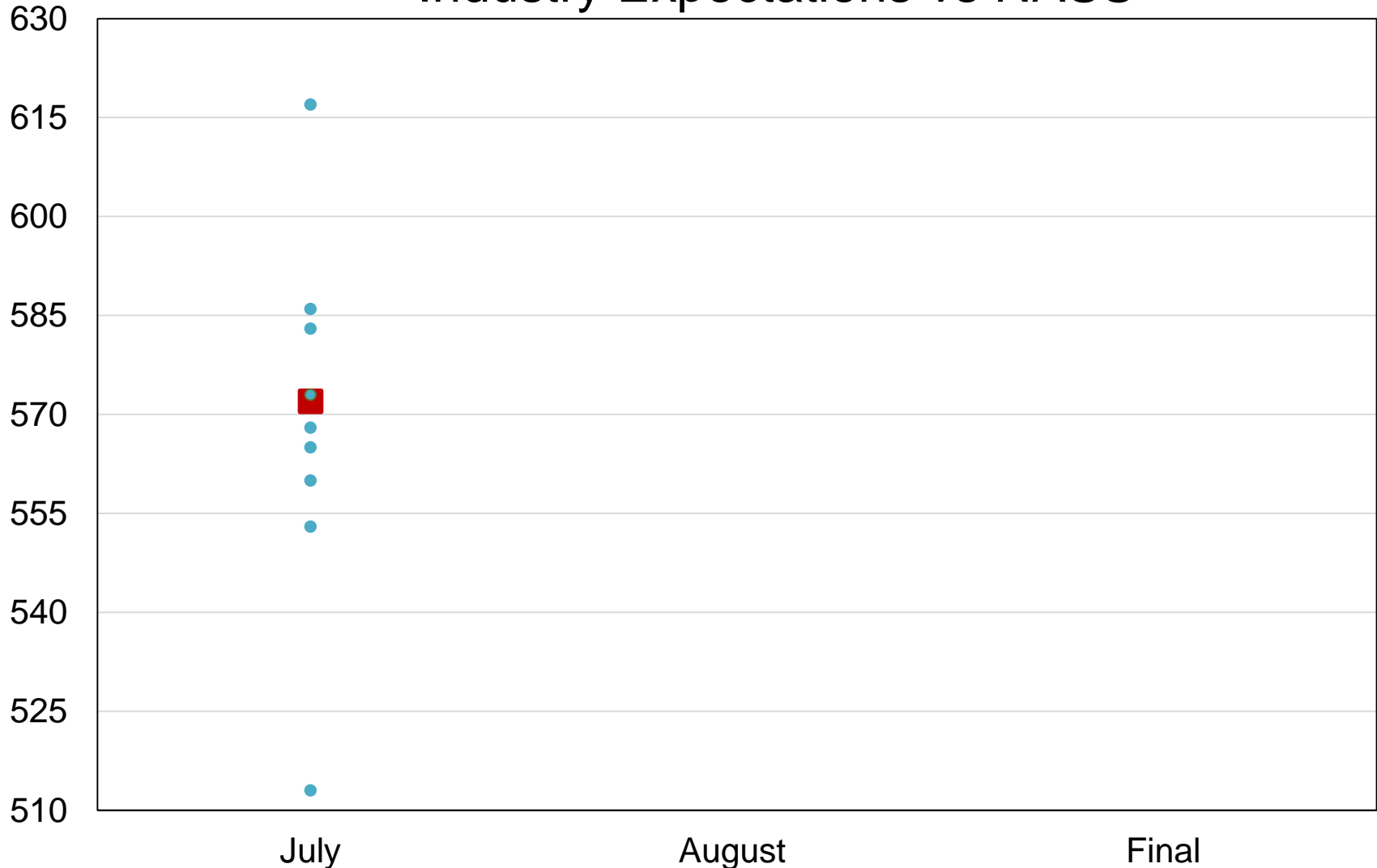
Billion Bushels





# 2019 United States Other Spring Wheat Production Industry Expectations vs NASS

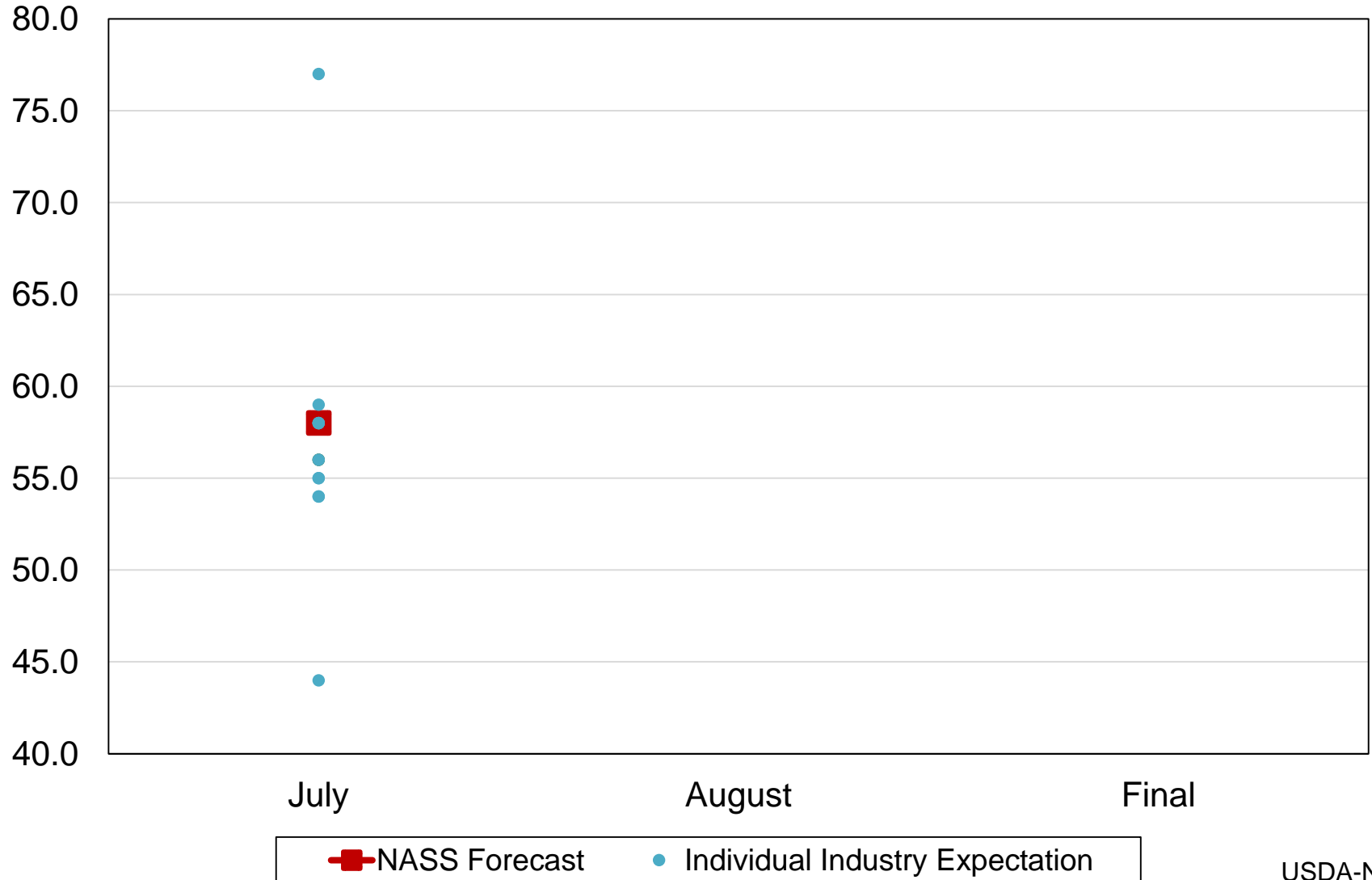
Million Bushels



 NASS Forecast     Individual Industry Expectation

# 2019 United States Durum Wheat Production Industry Expectations vs NASS

Million Bushels





# July 2019 Crop Production

Crop	Unit	July 2019	% Change From Previous Forecast	% Change From Previous Season
Oats				
Harvested	Thou Ac	909	NC	+5.1
Yield	Bu/Ac	67.8	NA	+4.5
Production	Mil Bu	61.6	NA	+9.8
Barley				
Harvested	Mil Ac	2.33	NC	+17.8
Yield	Bu/Ac	73.3	NA	-5.3
Production	Mil Bu	171	NA	+11.6



# July 2019 Crop Production

Crop	Unit	July 2019	% Change From Previous Forecast	% Change From Previous Season
Production				
Oranges	Mil Tons	5.33	+1.4	+35.8
Grapefruit	Thou Tons	616	+2.0	+19.1
Tangerines & Mandarins	Thou Tons	887	-4.3	+10.3
Lemons	Thou Tons	896	+5.2	+0.9



# July 2019 Crop Production

Crop	Unit	July 2019	% Change From Previous Forecast	% Change From Previous Season
Tobacco, Flue-Cured				
Harvested	Thou Ac	159	NC	-19.6
Yield	Lbs/Ac	2,015	NA	+17.7
Production	Mil Lbs	320	NA	-5.4



# July 2019 Crop Production

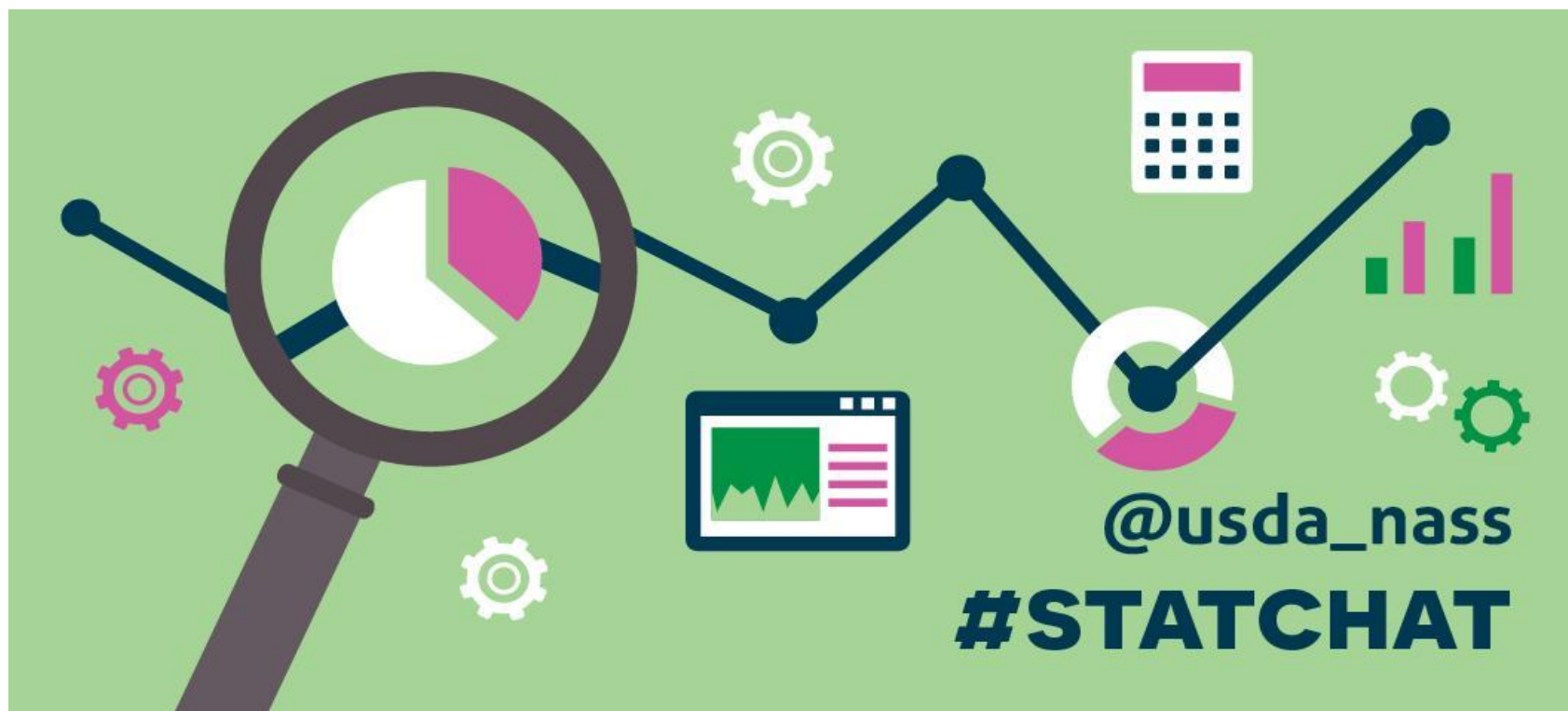
Crop	Unit	July 2019	% Change From Previous Forecast	% Change From Previous Season
Production				
Almonds (CA)	Bil Lbs	2.20	-12.0	-3.5
Apricots	Thou Tons	64.5	NA	+63.1



# Upcoming Reports

Release Date	Report Title
July 19	Cattle and Cattle on Feed
July 25	Census: Watersheds
July 31	Agricultural Prices
August 1	CAIR: Cotton System, Fats & Oils, Flour Milling, Grain Crushings
August 2	Farm Production Expenditures
August 6	Cash Rents Land Values
August 12	Cotton Ginnings Crop Production





Join [@usda\\_nass](https://twitter.com/usda_nass) this Thursday, July 11, at 1p.m. ET for another [#StatChat](https://twitter.com/hashtag/StatChat) with Lance Honig.

We will discuss the Crop Production report and will be available to answer your [#AgStats](https://twitter.com/hashtag/AgStats) questions!



United States Department of Agriculture  
**National Agricultural Statistics Service**

---

---

**All Reports Available At**  
[www.nass.usda.gov](http://www.nass.usda.gov)

**For Questions**  
202-720-2127  
800-727-9540  
[nass@nass.usda.gov](mailto:nass@nass.usda.gov)