



United States Department of Agriculture
National Agricultural Statistics Service



Cattle Inventory
Sheep & Goat Inventory
January 1, 2019

Executive Briefing

Survey Overview

	January Cattle	January Sheep and Goats
Data collection period	January 29 – February 9	
Sample size	36,000	22,400
Collection methods	Mail, telephone, internet, face-to-face interview	
Primary data items	Total inventory, inventory by class, calf crop	Total inventory, inventory by class, lamb/kid crop

U.S. Cattle and Calves Revisions

Survey	Item	Initial Estimate (1,000 head)	Current Revision	Current Estimate (1,000 head)
January 1, 2018	All cattle and calves	94,399.0	-101,000 -0.1%	94,298.0
	All cows and heifers that have calved	41,122.6	-224,300 -0.5%	40,898.3
	Calf crop	35,808.2	-50,000 -0.1%	35,758.2
July 1, 2018	All cattle and calves	103,200.0	-200,000 -0.2%	103,000.0
	All cows and heifers that have calved	41,900.0	-100,000 -0.2%	41,800.0
	Calf crop	36,500.0	-97,300 -0.3%	36,402.7



U.S. Cattle Inventory January 1

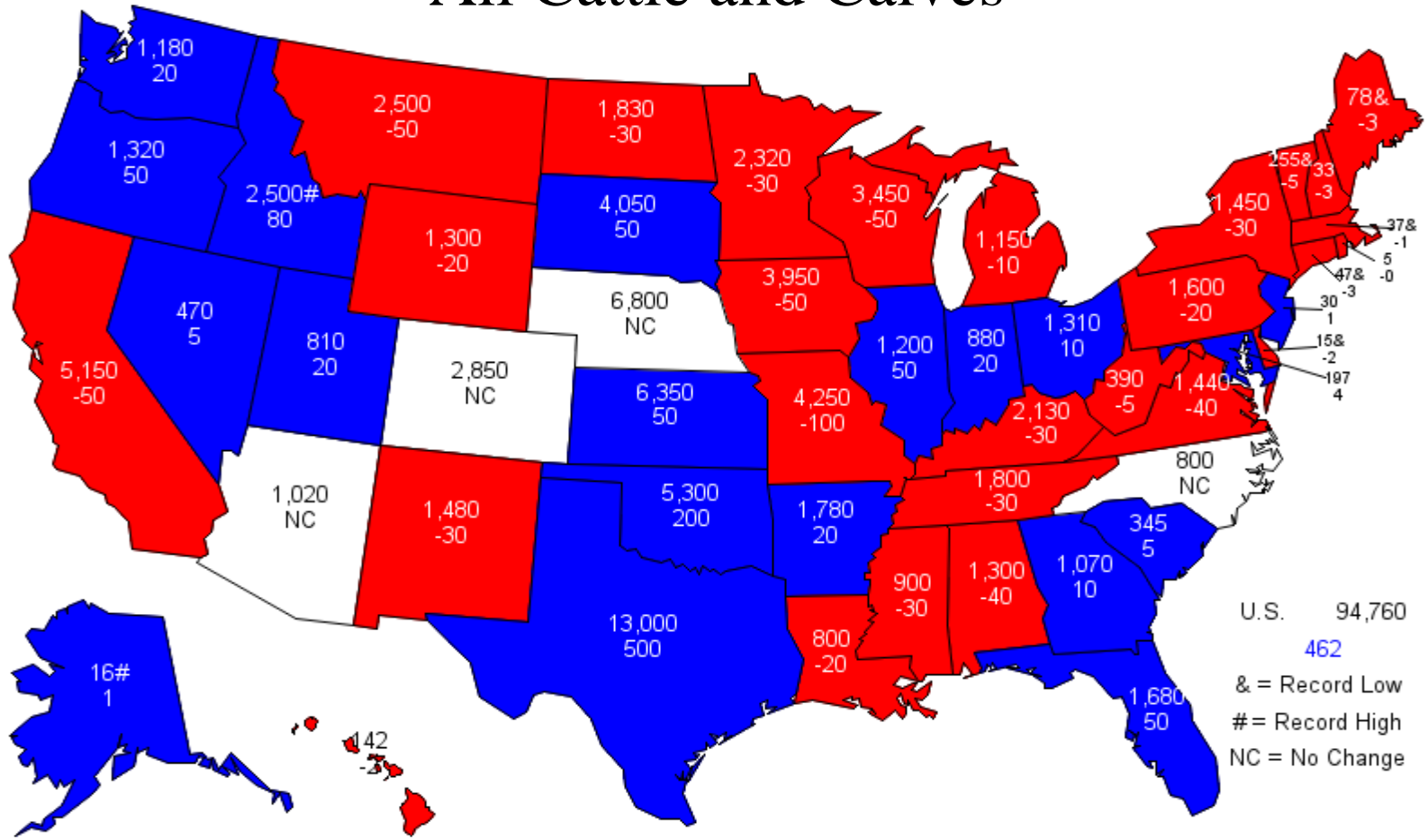


Items	2018 (1,000 head)	2019 (1,000 head)	% PY
All cattle and calves	94,298	94,760	100
All cows and heifers that have calved	40,898	41,119	101
Beef cows	31,466	31,766	101
Milk cows	9,432	9,353	99
All heifers 500 pounds and over	20,218	20,230	100
For beef cow replacement	6,108	5,925	97
Beef replacements expected to calve	3,763	3,544	94
For milk cow replacement	4,768	4,702	99
Milk replacements expected to calve	3,036	3,006	99
Other heifers	9,341	9,604	103
Steers 500 pounds and over	16,528	16,633	101
Bulls 500 pounds and over	2,252	2,263	100
Calves under 500 pounds	14,401	14,515	101
All cattle on feed	14,146	14,371	102
Previous year calf crop	35,758	36,403	102

Totals may not add due to rounding

January 1, 2019 Inventory

All Cattle and Calves



Legend

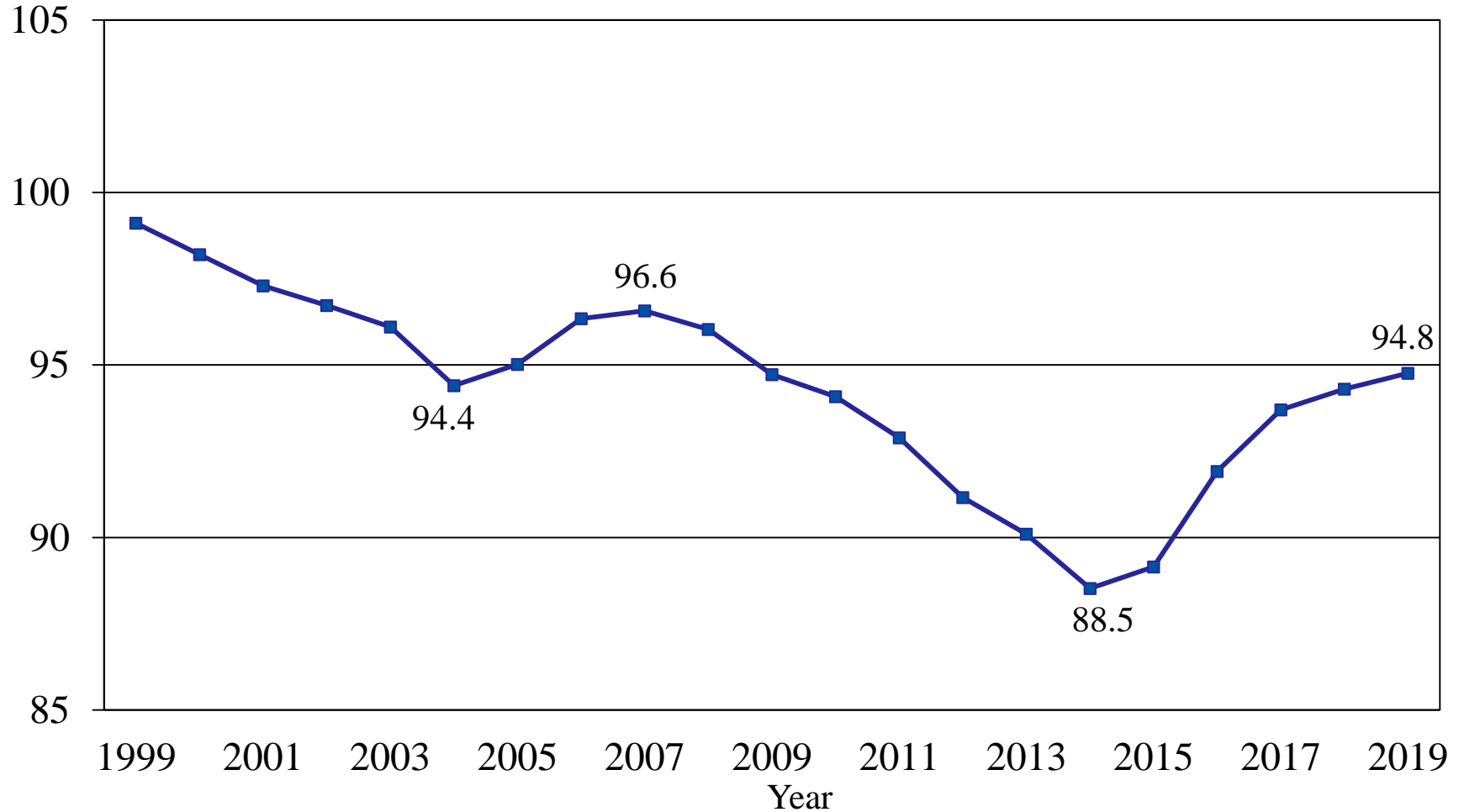
(1,000 head)

- January 1, 2019 Inventory
- Number of Head Change from Previous Year

U.S. All Cattle and Calves

January 1, 1999 - 2019

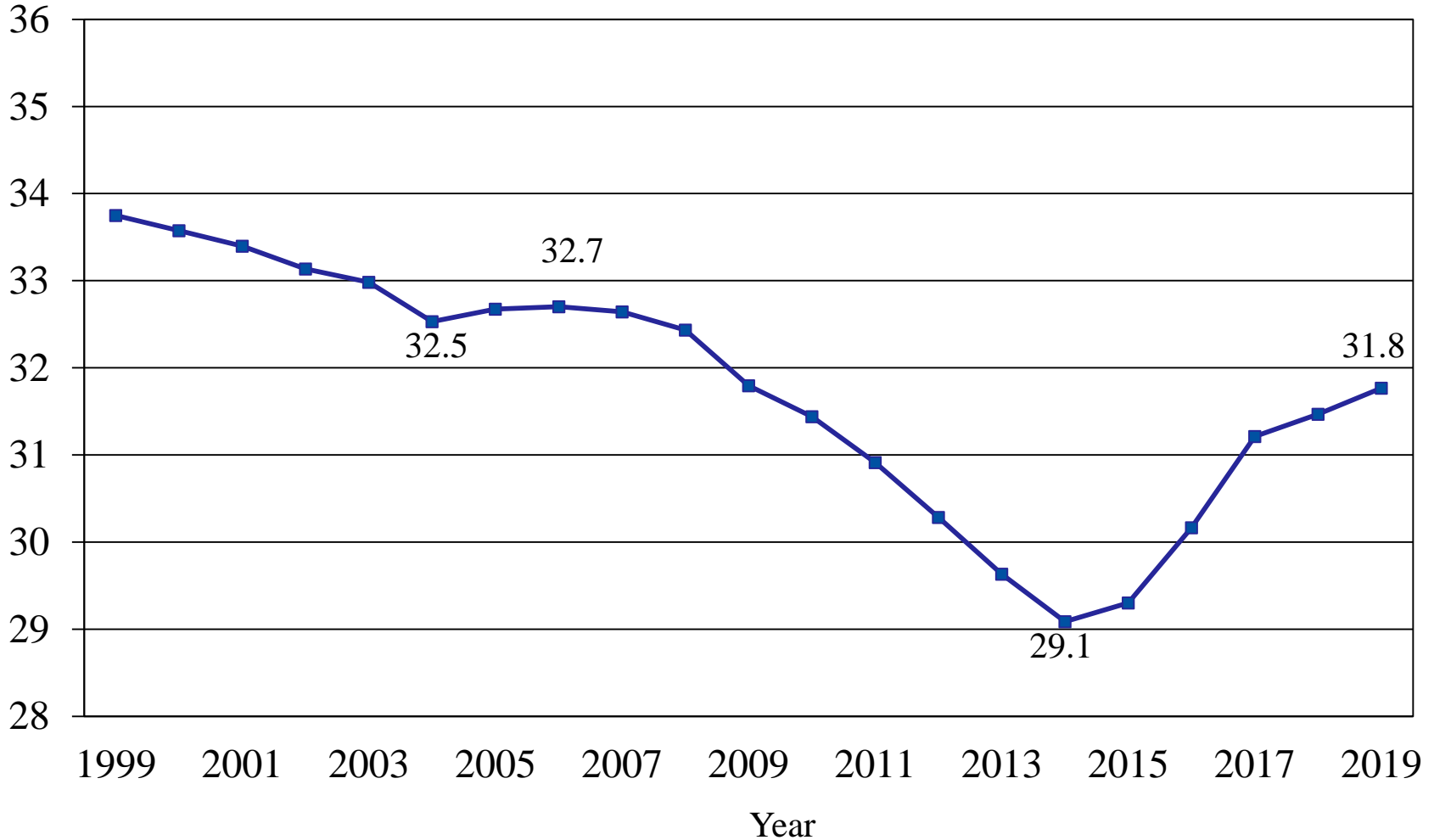
Million head



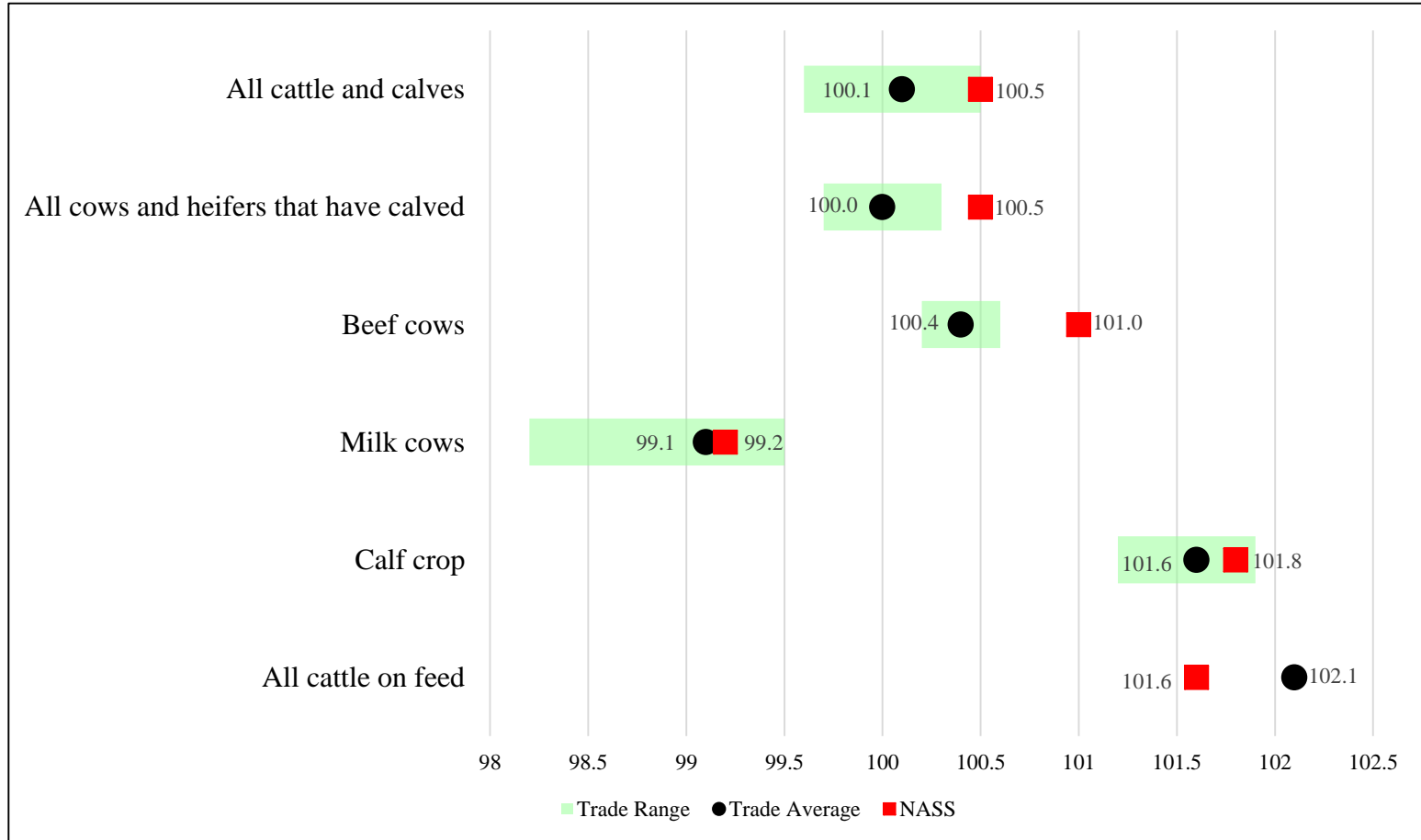
U.S. Beef Cows

January 1, 1999 - 2019

Million head



Trade Expectations Compared to NASS Estimates as Percent of Previous Year

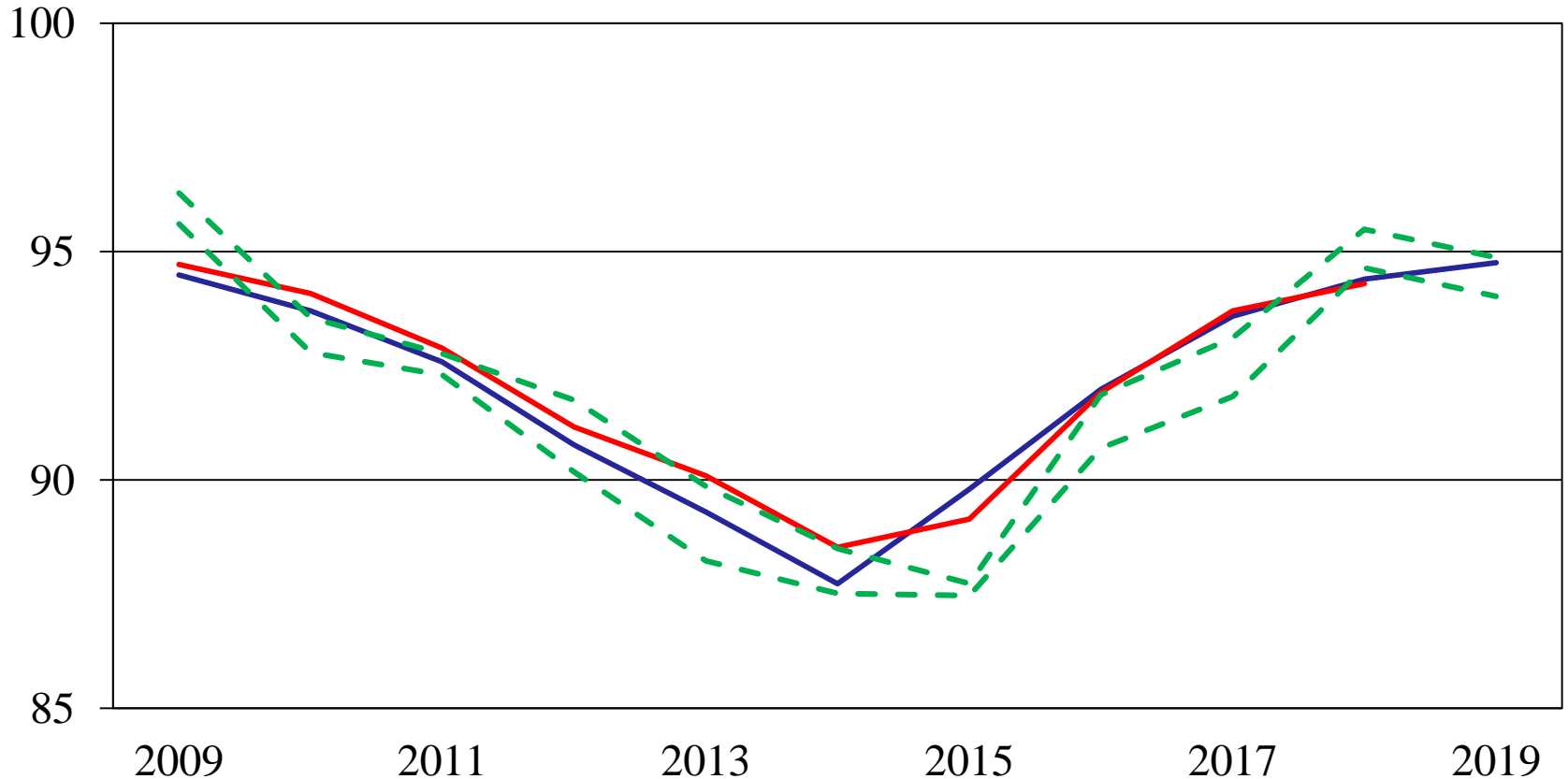


All Cattle and Calves Inventory

First Estimate versus Final Estimate

January 1, 2009 - 2019

Million head

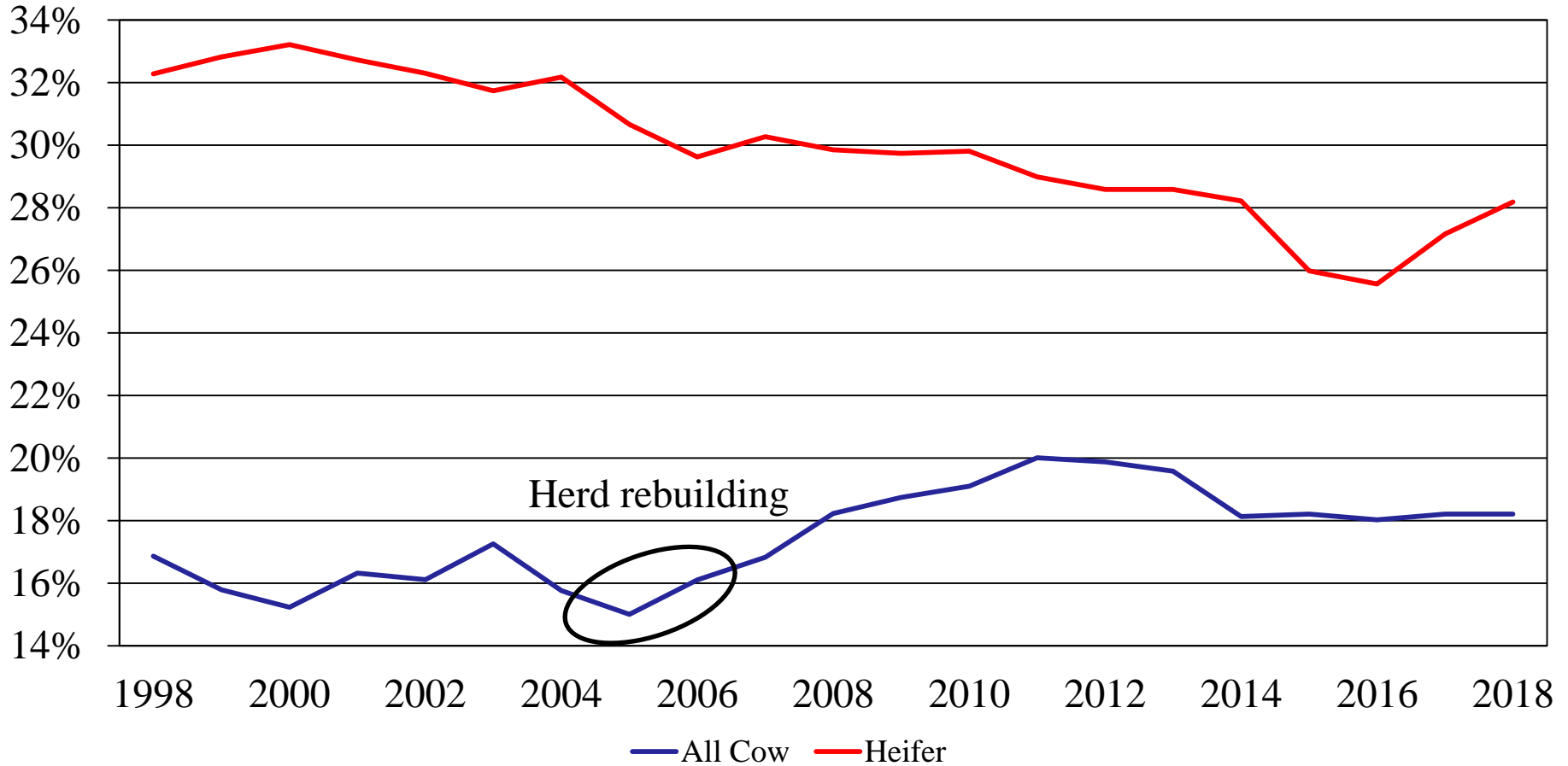


ASB First Estimate ASB Final Estimate Trade Lower Range Trade Upper Range

Year

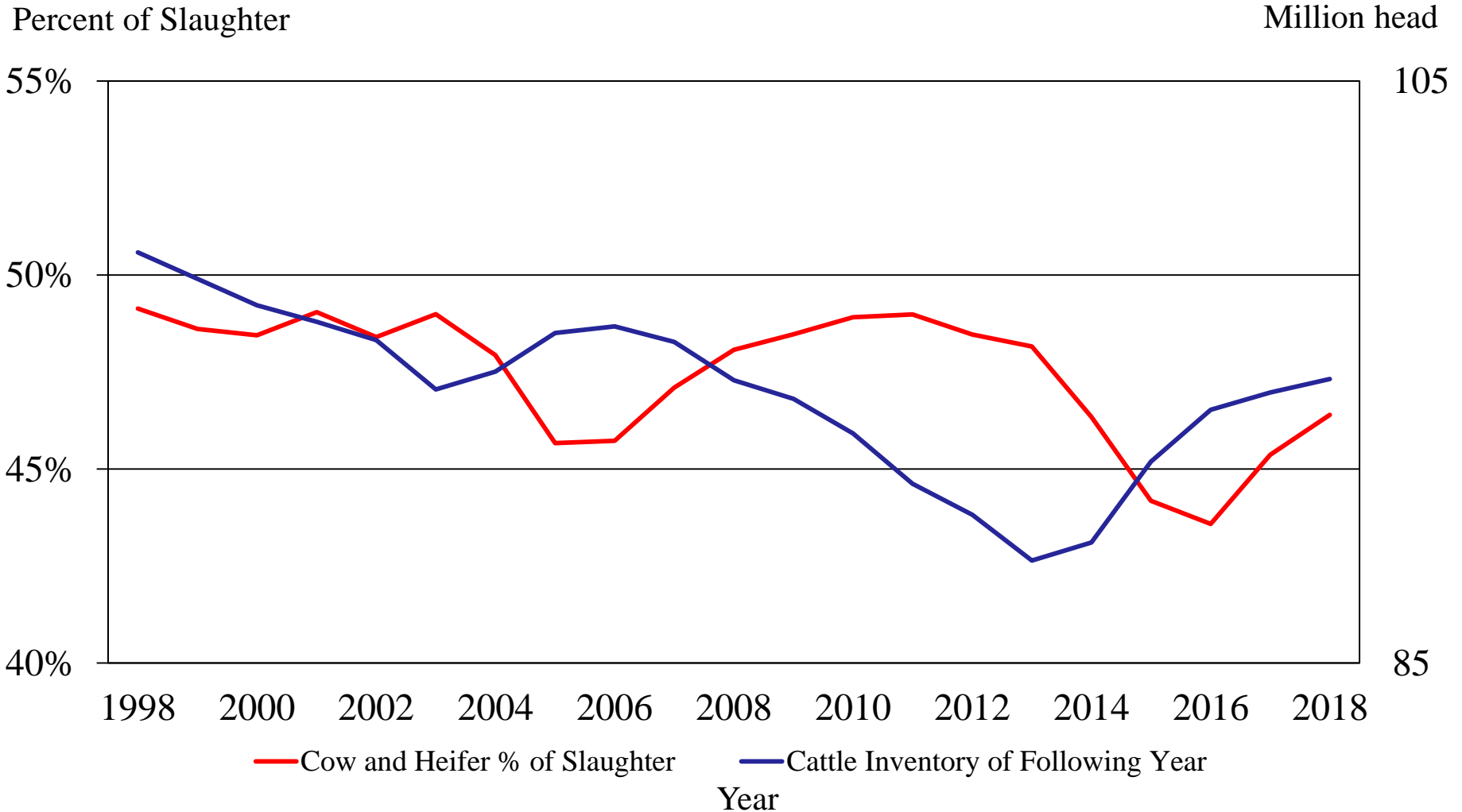
All Cow & Heifer Slaughter as a Percent of Total Slaughter

Percent of Slaughter



Year

Cattle Inventory vs Cow and Heifer Slaughter as a Percent of Slaughter





U.S. Feeder Cattle Supply on January 1



Item	2018 (1,000 head)	2019 (1,000 head)	% PY
Calves under 500 pounds	14,401	14,515	101
Steers and other heifers 500 pounds and over	25,870	26,236	101
Total supply	40,271	40,751	101
All cattle on feed	14,146	14,371	102
Feeder cattle supply	26,125	26,380	101
Number grazing on small grain pasture, 3 States	1,500	1,900	127
Kansas, Oklahoma, Texas			

Totals may not add due to rounding

February 28, 2019



U.S. Cattle on Feed on January 1



Item	2018 (1,000 head)	2019 (1,000 head)	% PY
Capacity of 1,000 head or more	11,489	11,690	102
Percent of total	81.2%	81.3%	
Capacity of less than 1,000 head	2,657	2,681	101
Percent of total	18.8%	18.7%	
All cattle on feed	14,146	14,371	102

U.S. Sheep and Lambs Revisions

Survey	Item	Initial Estimate (1,000 head)	Current Revision	Current Estimate (1,000 head)
January 1, 2018	All sheep and lambs	5,230	+35,000 +0.7%	5,265
	Lamb crop	3,200	+30,000 +0.9%	3,230



U.S. All Sheep and Lambs Inventory



January 1

Items	2018 (1,000 head)	2019 (1,000 head)	% PY
All sheep and lambs	5,265	5,230	99
Market	1,400	1,410	101
Breeding	3,865	3,820	99
Replacement lambs under one year old	662	650	98
Ewes one year old and older	3,033	3,000	99
Rams one year old and older	170	170	100
Previous year lamb crop	3,230	3,235	100

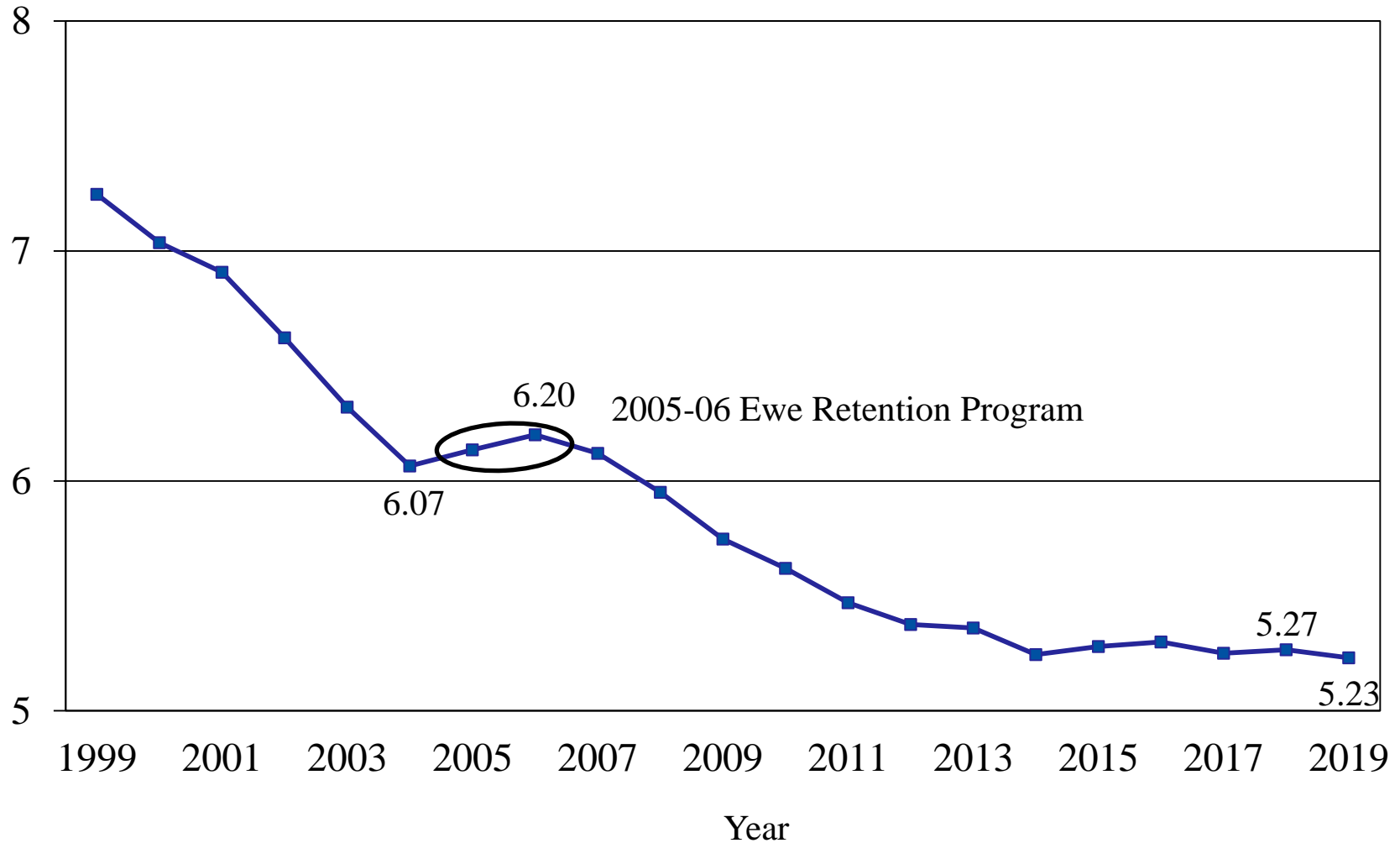
Totals may not add due to rounding

February 28, 2019

U.S. All Sheep and Lambs Inventory

January 1, 1999 - 2019

Million head



U.S. Goats and Kids Revisions

Survey	Item	Initial Estimate (1,000 head)	Current Revision	Current Estimate (1,000 head)
January 1, 2018	All goats and kids	2,620	+19,000 +0.7%	2,639
	Kid crop	1,637	-1,000 -0.1%	1,636



U.S. All Goats and Kids Inventory

January 1



Items	2018 (1,000 head)	2019 (1,000 head)	% PY
All goats and kids	2,639	2,622	99
Market	463	474	102
Breeding	2,176	2,148	99
Replacement kids under one year old	396	393	99
Does one year old and older	1,617	1,595	99
Bucks one year old and older	163	160	98
Previous year kid crop	1,636	1,638	100

Totals may not add due to rounding



U.S. Goat Inventory by Type

January 1



Items	2018 (1,000 head)	2019 (1,000 head)	% PY
All goats	2,639	2,622	99
Meat and other	2,075	2,055	99
Milk	420	430	102
Angora	144	137	95

Totals may not add due to rounding

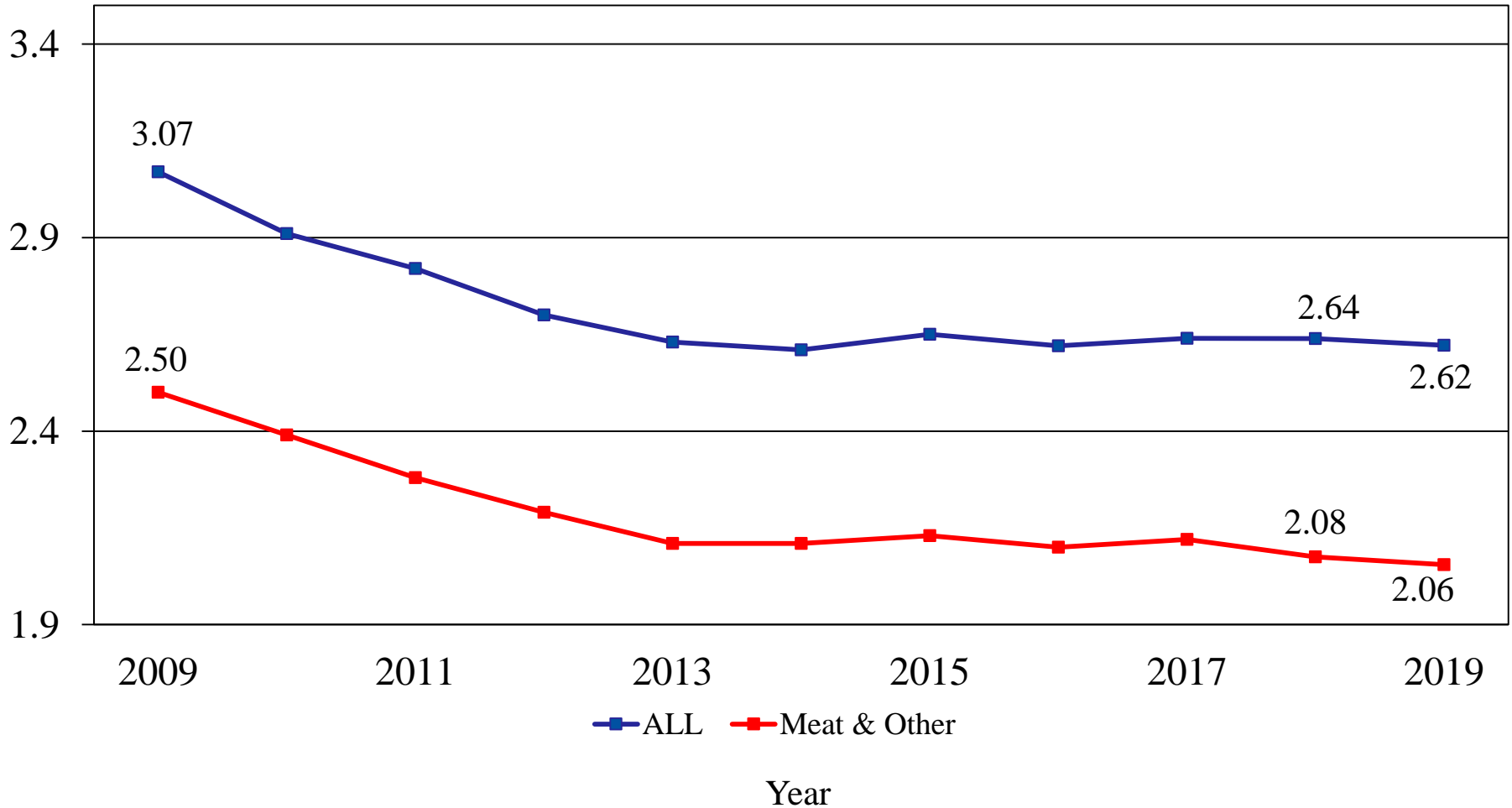


U.S. All Goats and Kids Inventory versus Meat and Other Goats and Kids Inventory



Million head

January 1, 2009 - 2019





Upcoming NASS Reports



Release Date	Report Title
March 1	CAIR: Cotton System, Fats & Oils, Flour Milling, and Grain Crushings
March 4	Livestock Slaughter
March 8	Crop Production Cattle on Feed
March 12	Milk Production
March 19	Milk Production
March 21	Livestock Slaughter
March 22	Cattle on Feed
March 28	Agricultural Prices Hogs and Pigs



United States Department of Agriculture
National Agricultural Statistics Service



All Reports Available At
www.nass.usda.gov

For Questions
(202) 720-3570
(800) 727-9540
nass@nass.usda.gov