



United States Department of Agriculture  
**National Agricultural Statistics Service**

---

---

**July Crop Production**  
Executive Summary

Lance Honig, Chief  
Crops Branch



# Contents

Field Crops	Fruit and Nuts	Specialty Crops
Winter Wheat	Citrus	Tobacco
Other Spring Wheat	Apricots	
Durum Wheat	Almonds	
Barley		
Oats		



# Survey Overview

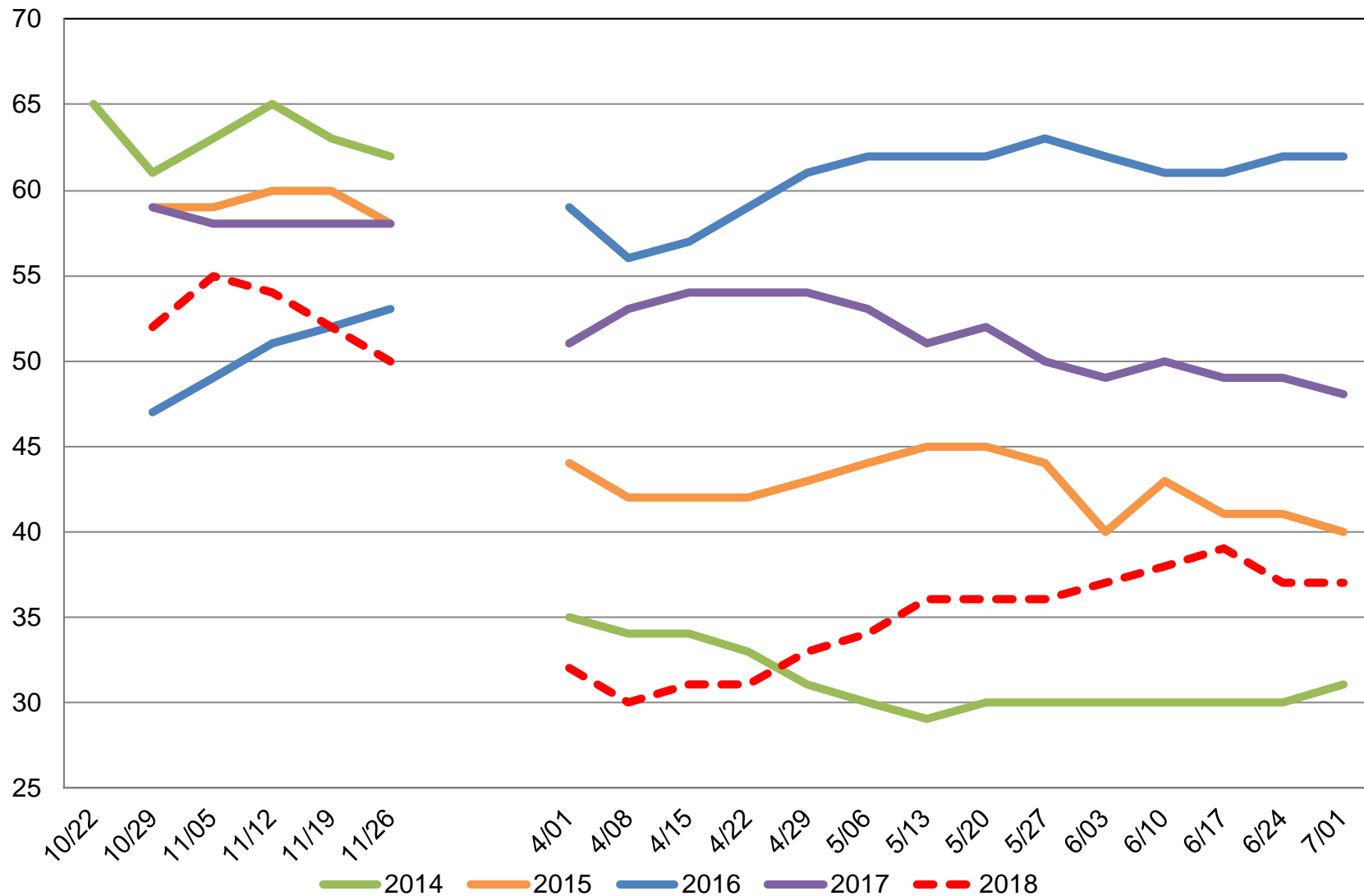
	<b>Ag Yield</b>	<b>Objective Yield</b>
Survey Type	Farmer Reported	Field Measurement
Crops Included	Winter, Other Spring, & Durum Wheat, Oats, Barley, Tobacco	Winter Wheat
States	34	10
Sample Size	6,841	1,470
Collection Period	June 29 – July 9	June 23 – July 1



# U.S. Winter Wheat Condition

## Percent Rated Good to Excellent

Percent

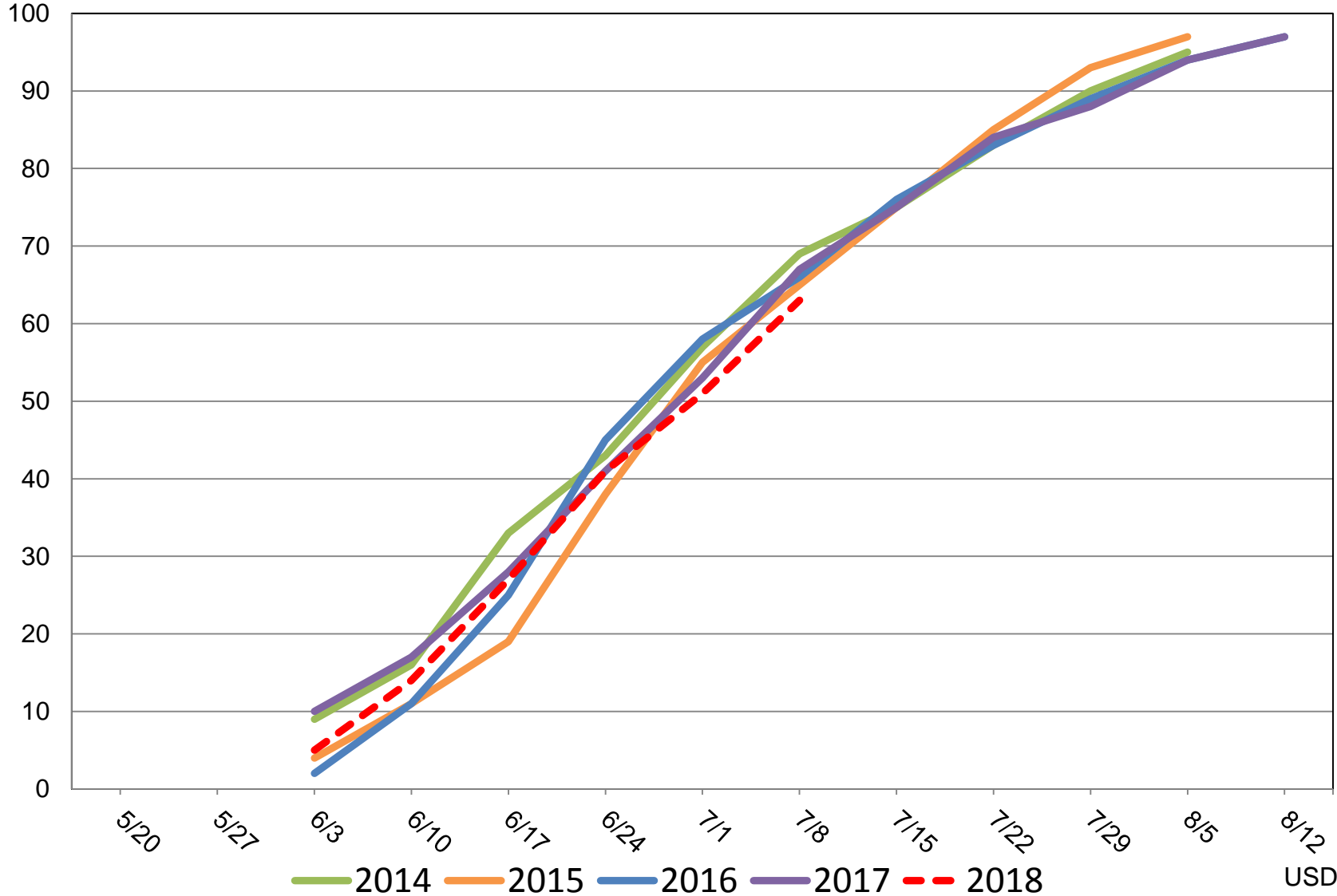




# U.S. Winter Wheat Progress

Percent

Percent Harvested



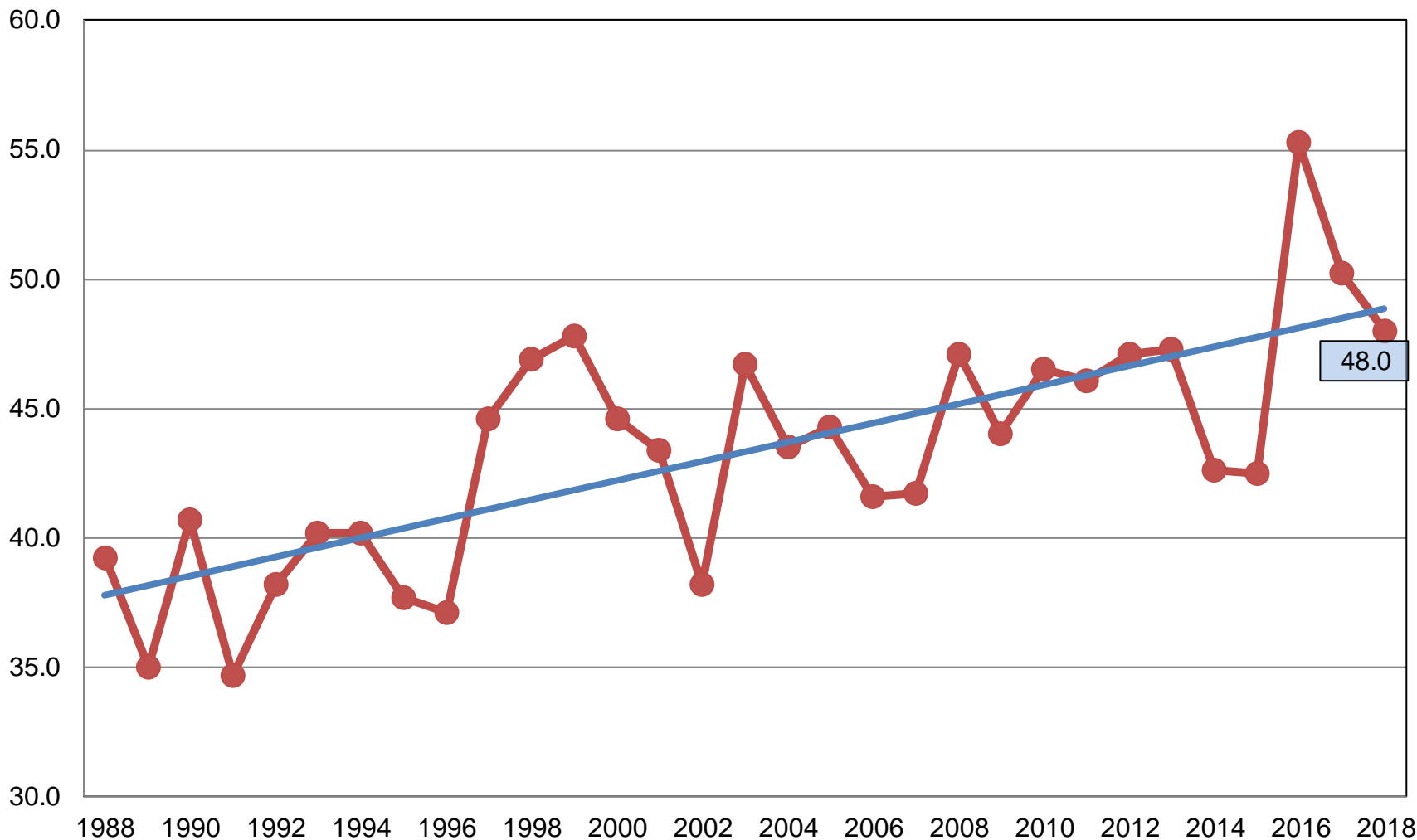


# July 2018 Crop Production

Crop	Unit	July 2018	% Change From Previous Forecast	% Change From Previous Season
Wheat, Winter				
Harvested	Mil Ac	24.8	NC	-1.8
Yield	Bu/Ac	48.0	-0.8	-4.4
Production	Bil Bu	1.19	-0.4	-6.1
Production by Class				
Hard Red	Mil Bu	657	+1.1	-12.4
Soft Red	Mil Bu	303	-4.0	+3.6
White	Mil Bu	232	+0.2	+2.4

# Winter Wheat Yield United States

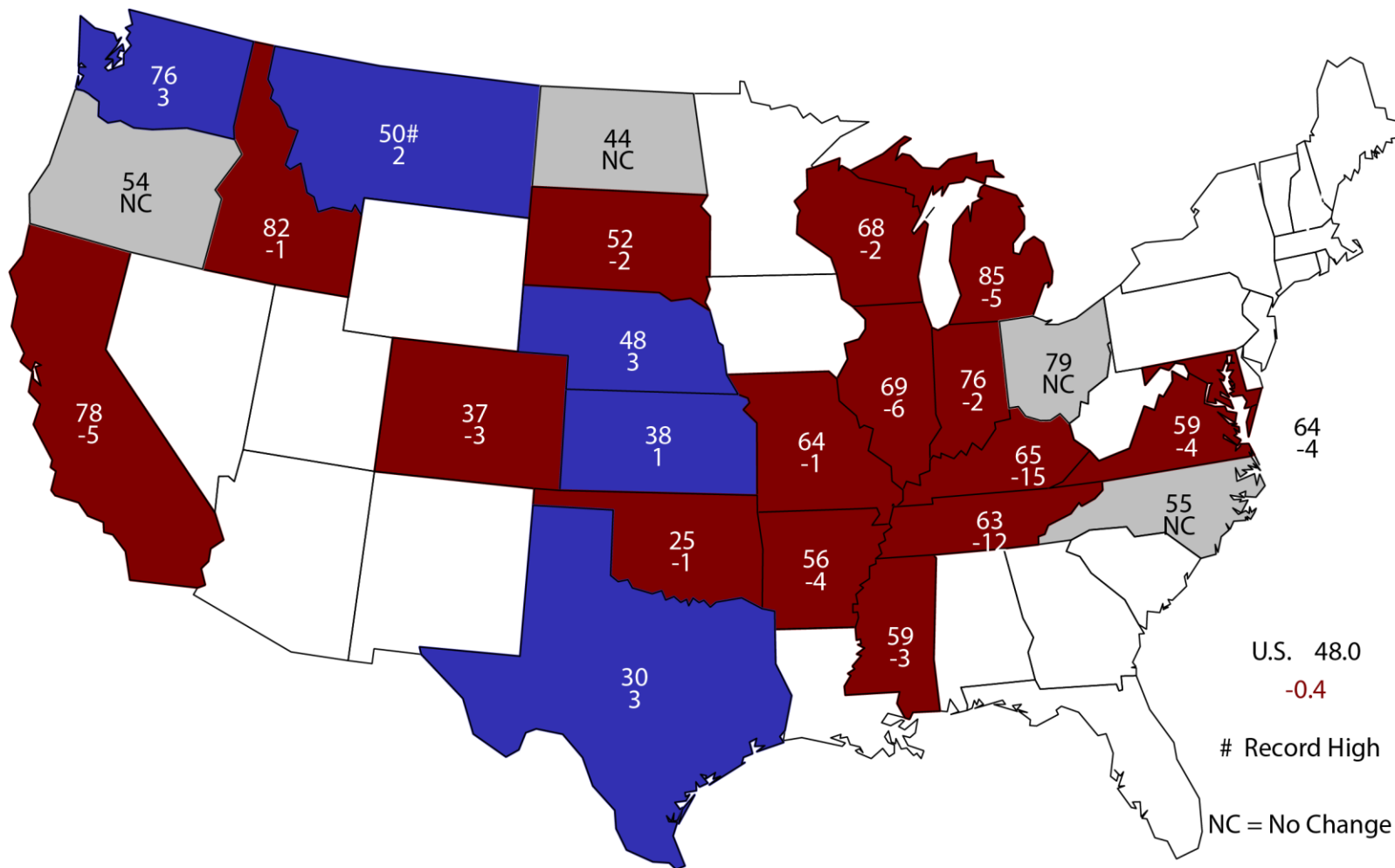
Bushels per Acre



Yield Linear (Yield)

# July 1, 2018 Winter Wheat Yield

## Bushels and Change From Previous Estimate



U.S. 48.0  
-0.4

# Record High  
NC = No Change





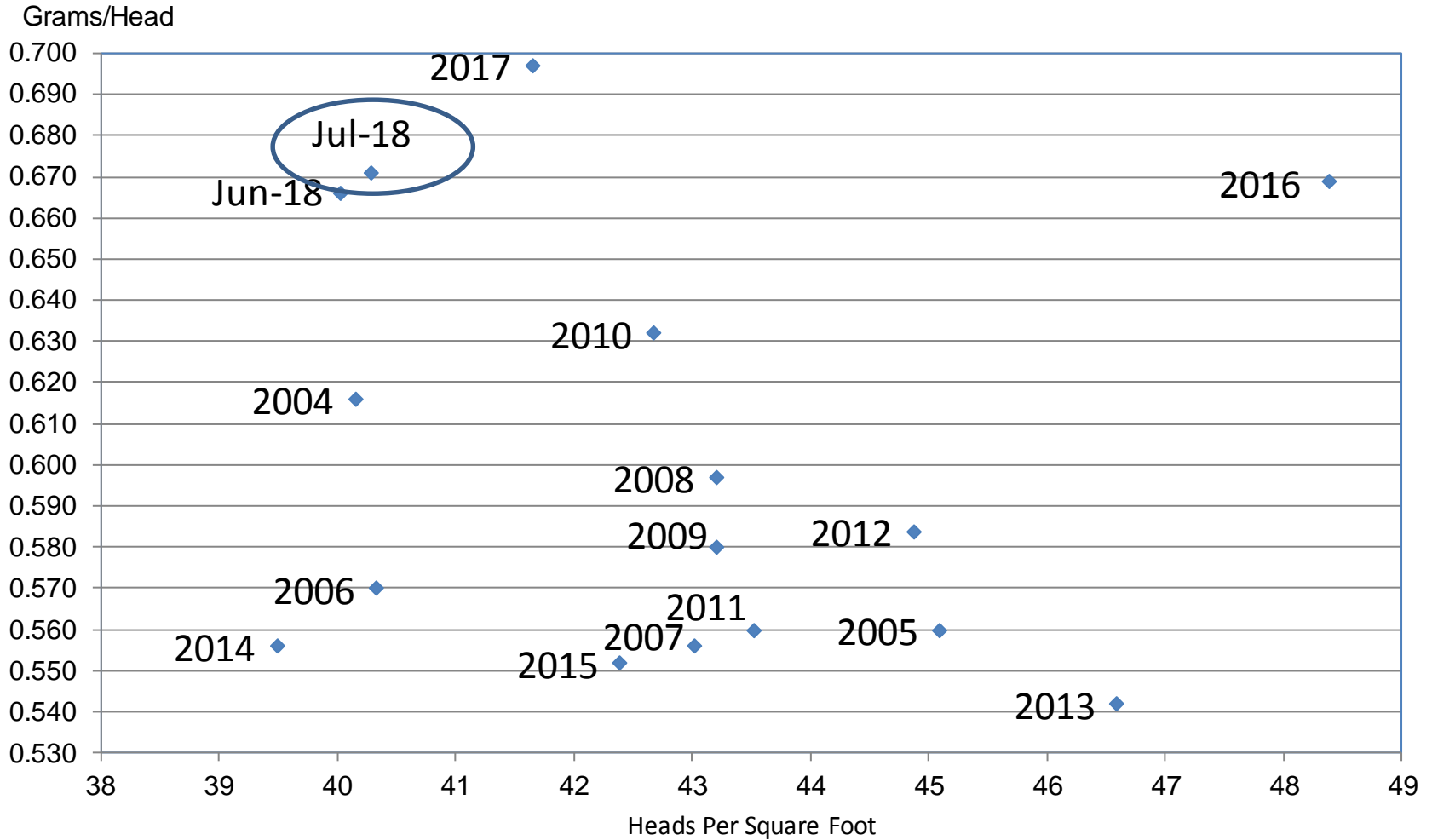
# Winter Wheat Objective Yield - July

## Percent of Samples Processed in the Lab

Year	Mature <i>---Percent---</i>
2012	77
2013	55
2014	58
2015	64
2016	68
2017	69
2018	69

# Wheat Objective Yield Region

## Heads Per Square Foot vs. Implied Head Weight



Implied Head Weight = Published Yield / (Heads\*1.6006)

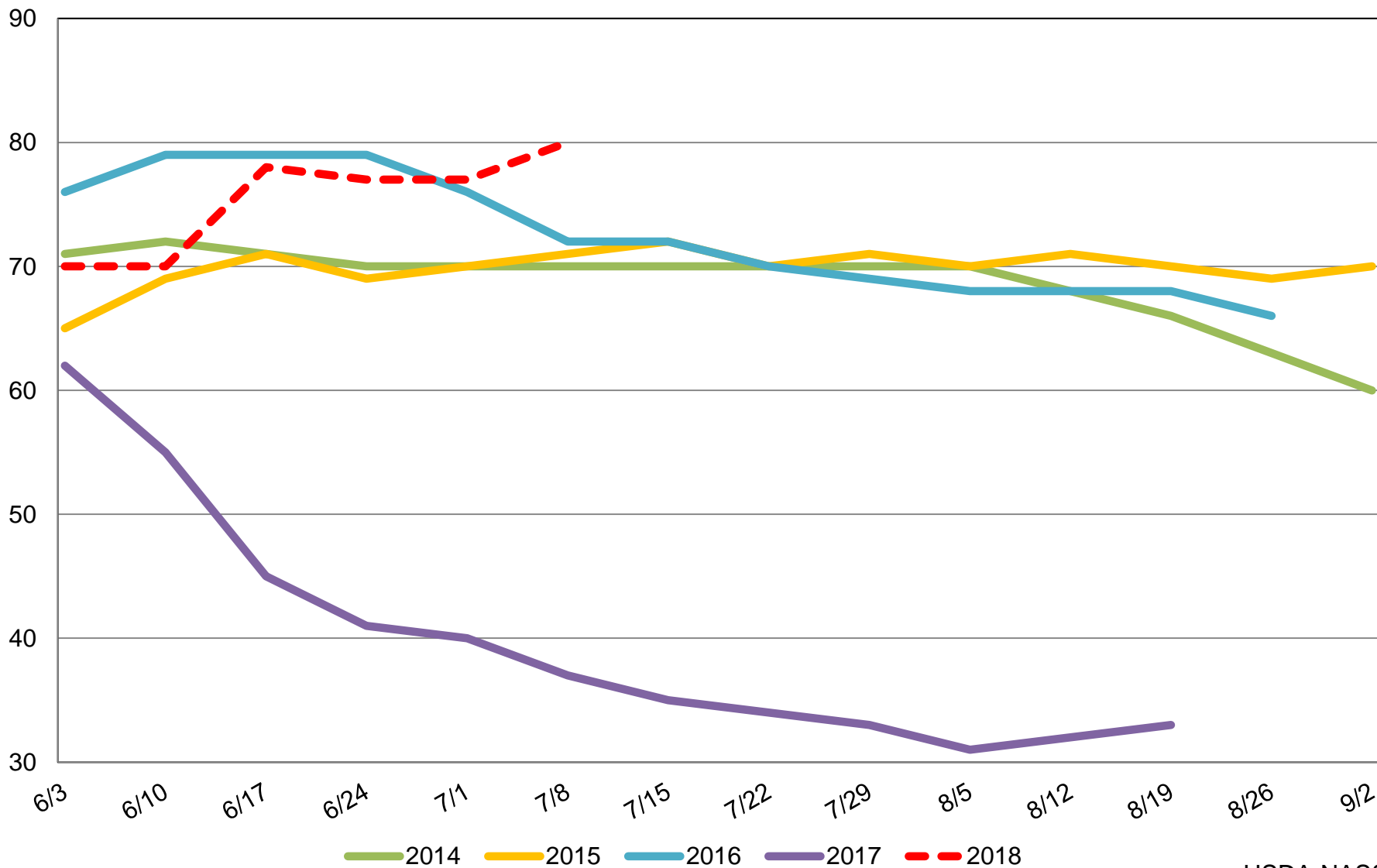


Percent



# U.S. Other Spring Wheat Condition

## Percent Rated Good to Excellent



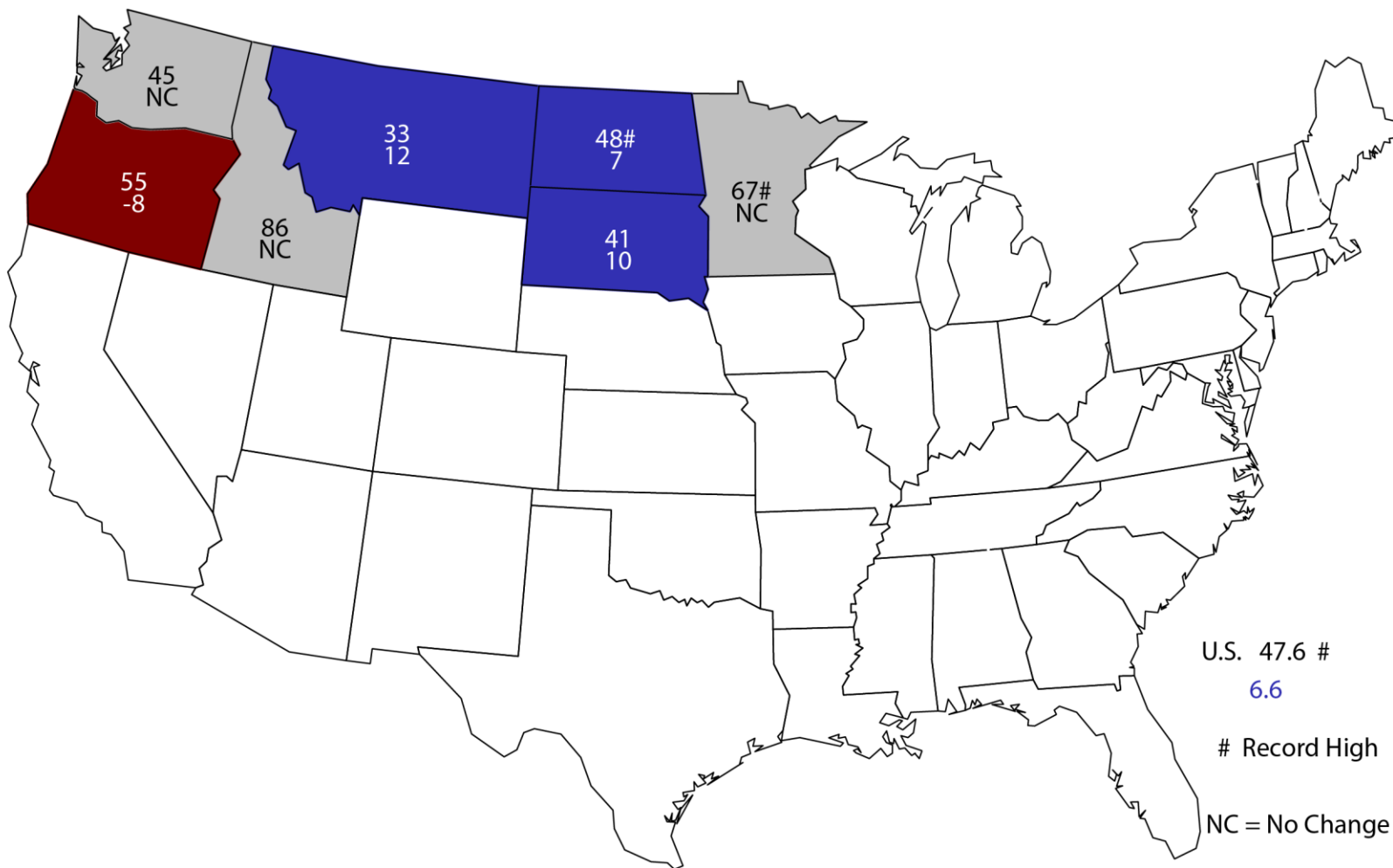


# July 2018 Crop Production

Crop	Unit	July 2018	% Change From Previous Forecast	% Change From Previous Season
Wheat, Other Spring				
Harvested	Mil Ac	12.9	NC	+27.0
Yield	Bu/Ac	47.6	NA	+16.1
Production	Mil Bu	614	NA	+47.5

# July 1, 2018 Other Spring Wheat Yield

## Bushels and Change From Previous Year



U.S. 47.6 #

6.6

# Record High

NC = No Change



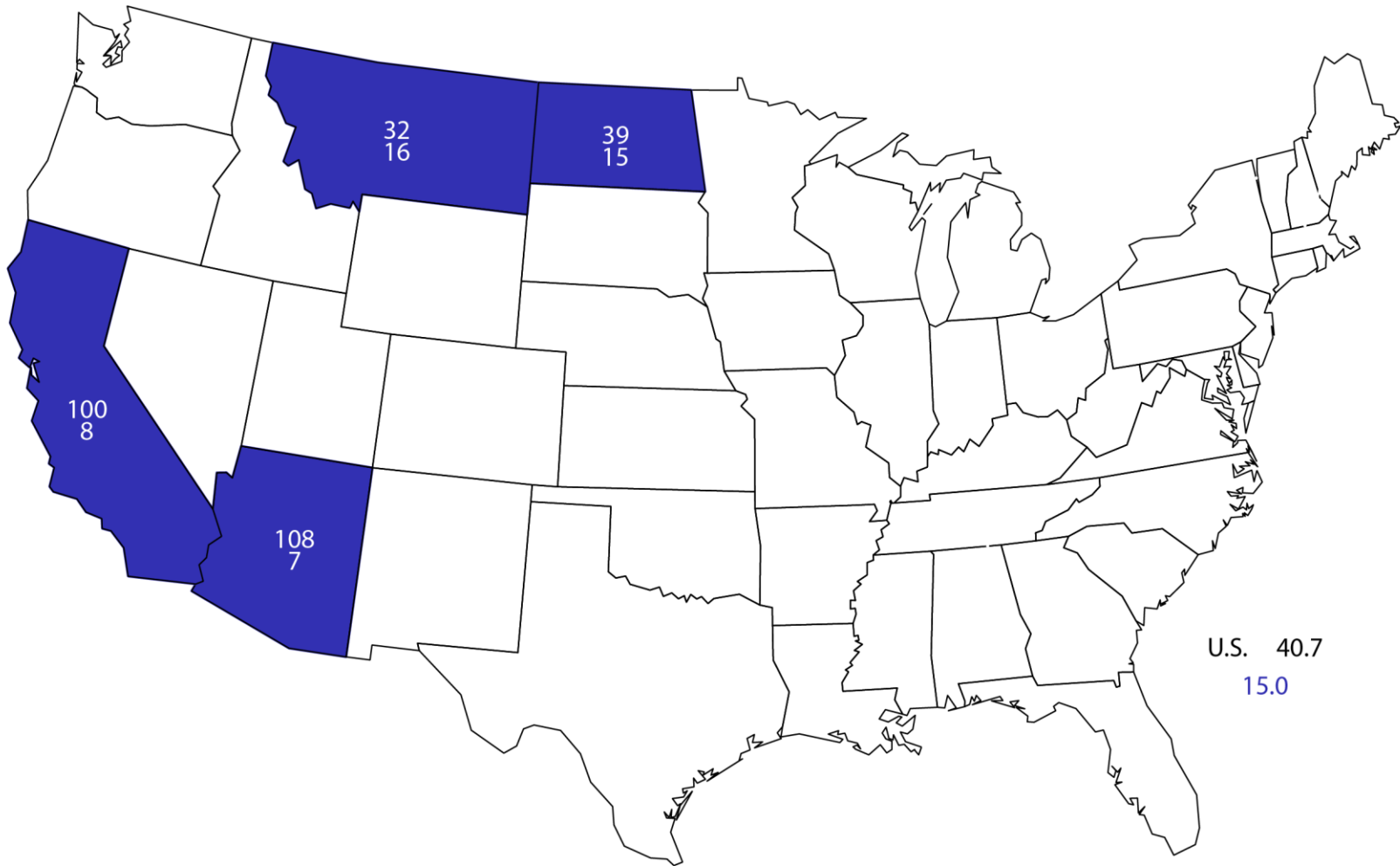
# July 2018 Crop Production

Crop	Unit	July 2018	% Change From Previous Forecast	% Change From Previous Season
Wheat, Durum				
Harvested	Mil Ac	1.84	NC	-13.8
Yield	Bu/Ac	40.7	NA	+58.4
Production	Mil Bu	74.9	NA	+36.4



# July 1, 2018 Durum Wheat Yield

## Bushels and Change From Previous Year





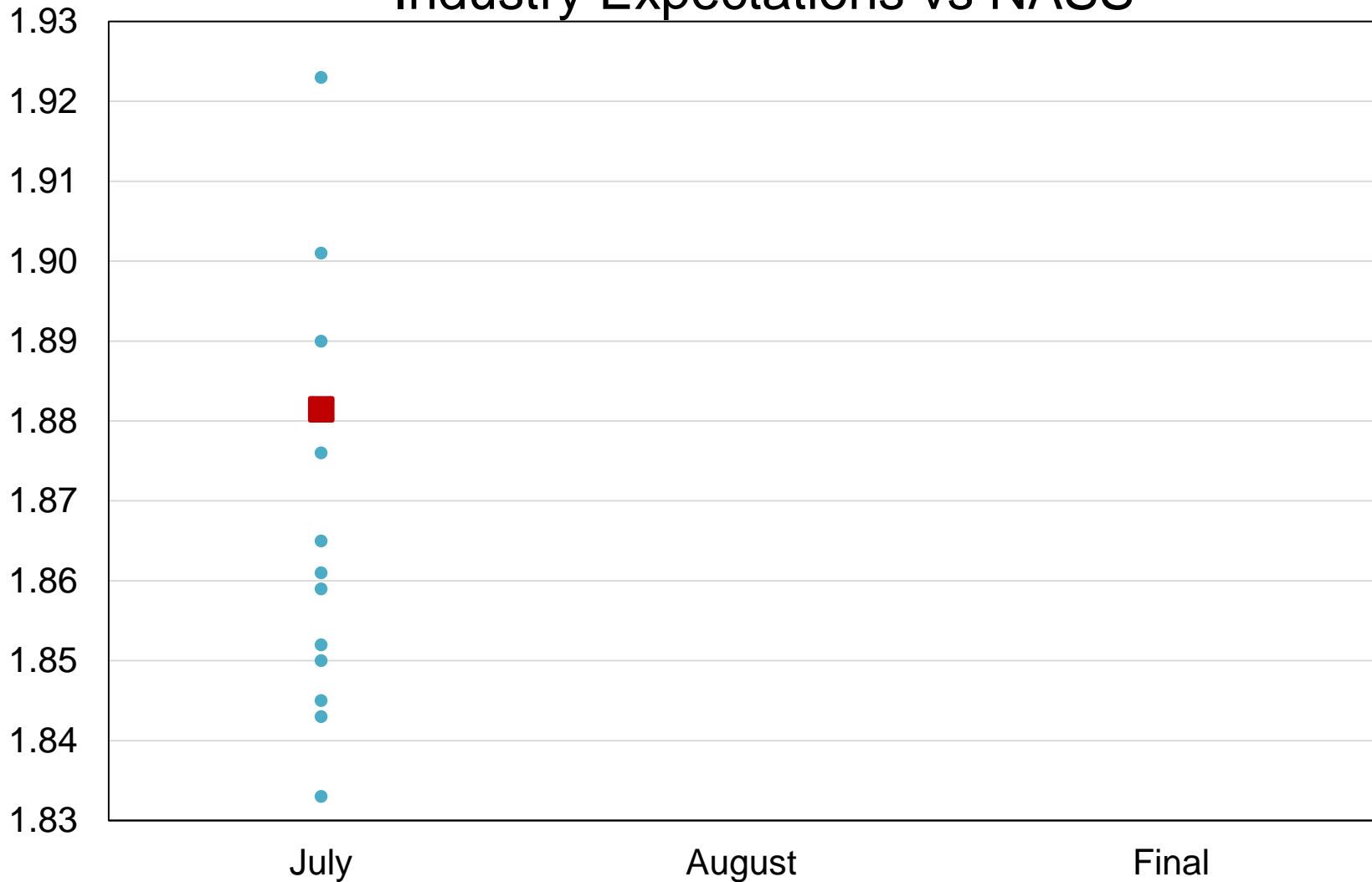
# July 2018 Crop Production

Crop	Unit	July 2018	% Change From Previous Forecast	% Change From Previous Season
All Wheat				
Harvested	Mil Ac	39.6	NC	+5.3
Yield	Bu/Ac	47.5	NA	+2.6
Production	Bil Bu	1.88	NA	+8.1



# 2018 United States All Wheat Production Industry Expectations vs NASS

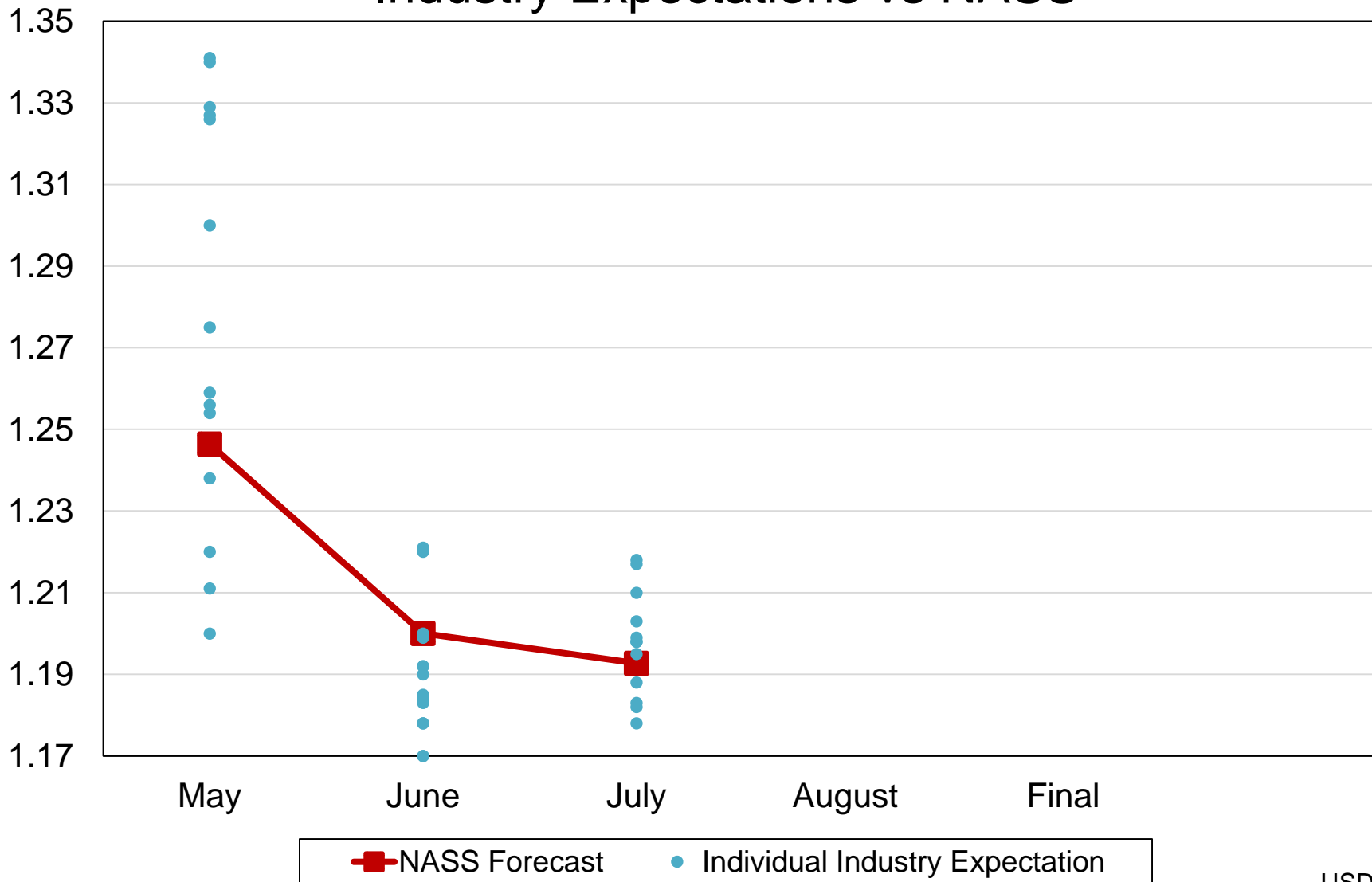
Billion Bushels



■ NASS Forecast     
 ● Individual Industry Expectation

# 2018 United States Winter Wheat Production Industry Expectations vs NASS

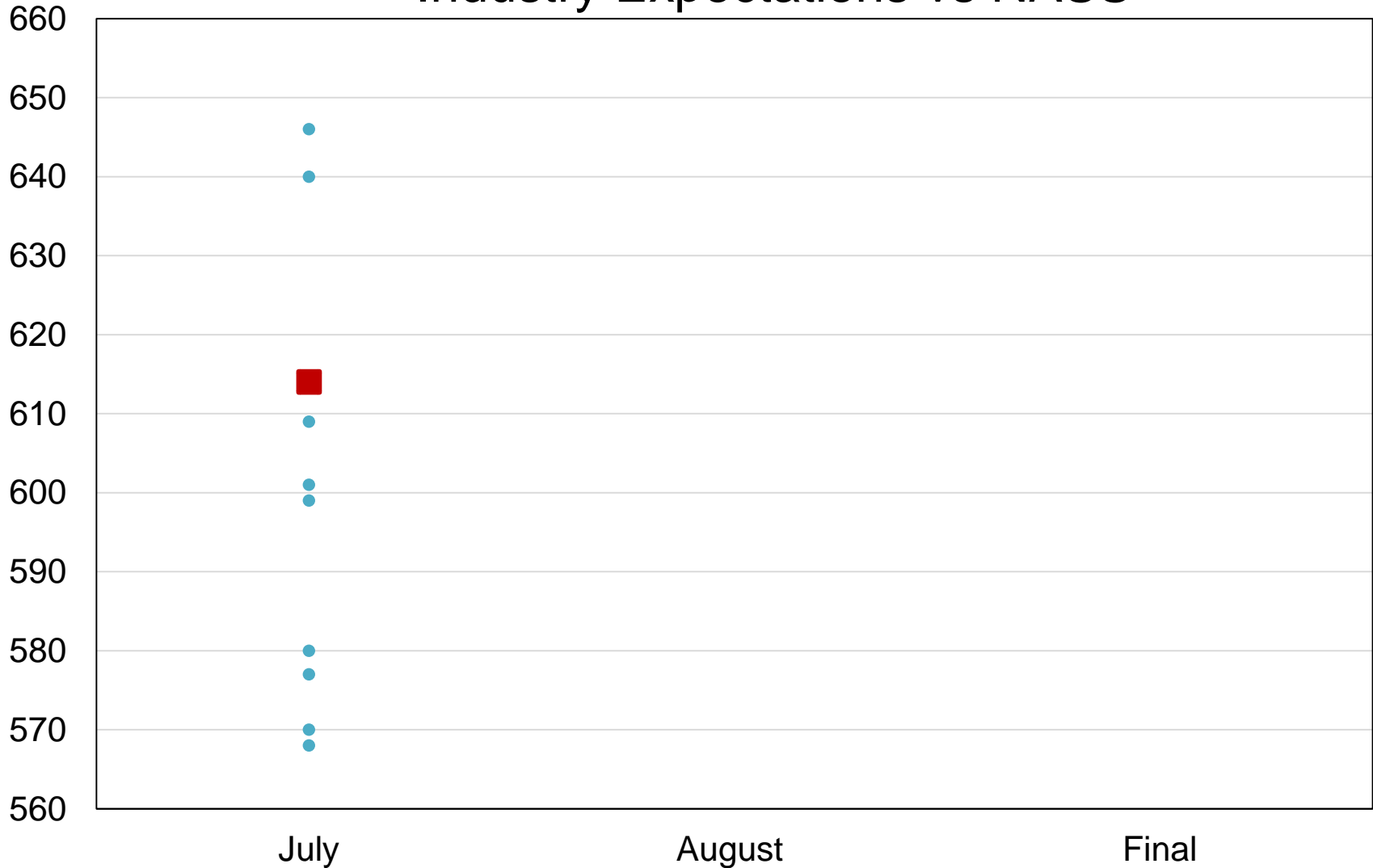
Billion Bushels





# 2018 United States Other Spring Wheat Production Industry Expectations vs NASS

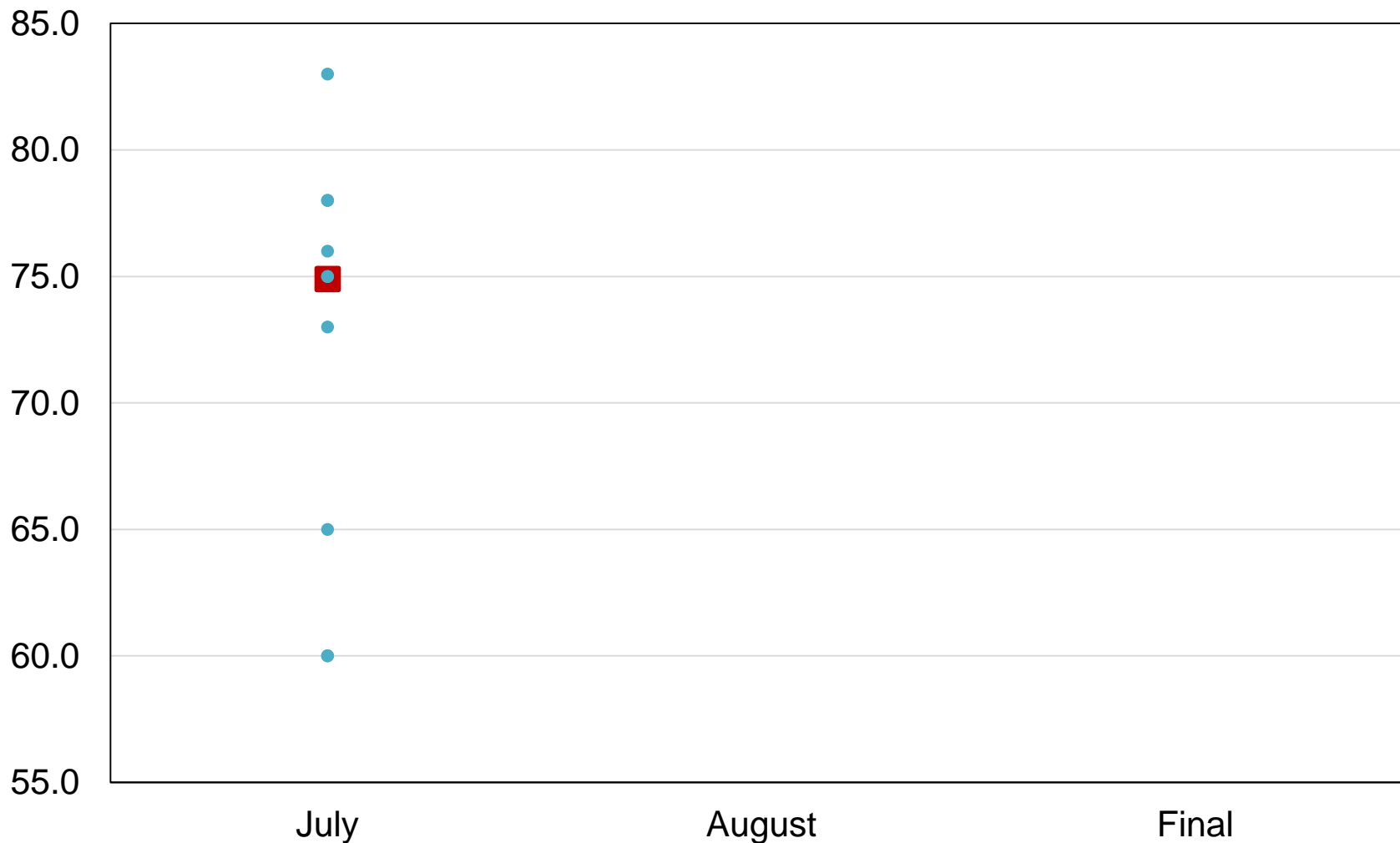
Million Bushels



■ NASS Forecast    ● Individual Industry Expectation

# 2018 United States Durum Wheat Production Industry Expectations vs NASS

Million Bushels



NASS Forecast      Individual Industry Expectation



# July 2018 Crop Production

Crop	Unit	July 2018	% Change From Previous Forecast	% Change From Previous Season
Oats				
Harvested	Mil Ac	1.01	NC	+26.0
Yield	Bu/Ac	65.8	NA	+6.6
Production	Mil Bu	66.4	NA	+34.4
Barley				
Harvested	Mil Ac	2.05	NC	+4.7
Yield	Bu/Ac	75.6	NA	+4.1
Production	Mil Bu	155	NA	+8.9



# July 2018 Crop Production

Crop	Unit	July 2018	% Change From Previous Forecast	% Change From Previous Season
Production				
Oranges	Mil Tons	3.86	-0.8	-24.1
Grapefruit	Thou Tons	517	-6.5	-25.9
Tangerines & Mandarins	Thou Tons	836	-4.6	-19.1
Lemons	Thou Tons	872	NC	-1.6



# July 2018 Crop Production

Crop	Unit	July 2018	% Change From Previous Forecast	% Change From Previous Season
Tobacco, Flue-Cured				
Harvested	Thou Ac	205	NC	-2.4
Yield	Lbs/Ac	2,111	NA	-4.0
Production	Mil Lbs	432	NA	-6.3



# July 2018 Crop Production

Crop	Unit	July 2018	% Change From Previous Forecast	% Change From Previous Season
Production				
Almonds (CA)	Bil Lbs	2.45	+6.5	+7.9
Apricots	Thou Tons	39.8	NA	-12.8





# Upcoming Reports

Release Date	Report Title
July 20	Cattle Cattle on Feed
July 30	Agricultural Prices
August 1	CAIR: Cotton System, Fats & Oils, Flour Milling, Grain Crushings Honey Bee Colonies
August 2	Cash Rents Farm Production Expenditures Land Values
August 10	Cotton Ginnings Crop Production



United States Department of Agriculture  
**National Agricultural Statistics Service**

---

---

**All Reports Available At**  
[www.nass.usda.gov](http://www.nass.usda.gov)

**For Questions**  
202-720-2127  
800-727-9540  
[nass@nass.usda.gov](mailto:nass@nass.usda.gov)