



United States Department of Agriculture  
**National Agricultural Statistics Service**

---

---

**Acreage**  
**Grain Stocks**  
**Rice Stocks**

Executive Summary

Lance Honig, Chief  
Crops Branch

June 29, 2018

12:00 P.M.



# Contents



Field Crops	Stocks
Planted Acres	Corn
Harvested Acres	Soybeans
	Sorghum
	Rice
	All Wheat
	Barley
	Oats
	Dry Peas
	Lentils
	A. Winter Peas
	Chickpeas
	Rapeseed
	Canola
	Flaxseed
	Rye



# Survey Overview

	<b>June APS</b>	<b>June Area</b>	<b>Off-Farm Grain Stock Survey</b>
Survey Type	Farmer Reported	Farmer Reported	Reported
Collection Method	Mail, Phone, Internet, Personal Interview	Personal Interview	Mail, Phone, Internet, Personal Interview
Crops Included	Field Crops	Field Crops	Grains and Oilseeds On Hand
States	All Except HI	All Except AK and HI	All Except AK, HI, and NV
Sample Size	70,491 Farms	8,560 Segments	~ 8,500 Facilities
Collection Period	May 30 – June 15	May 30 – June 14	May 30 – June 18



# Principal Crops Planted Acreage

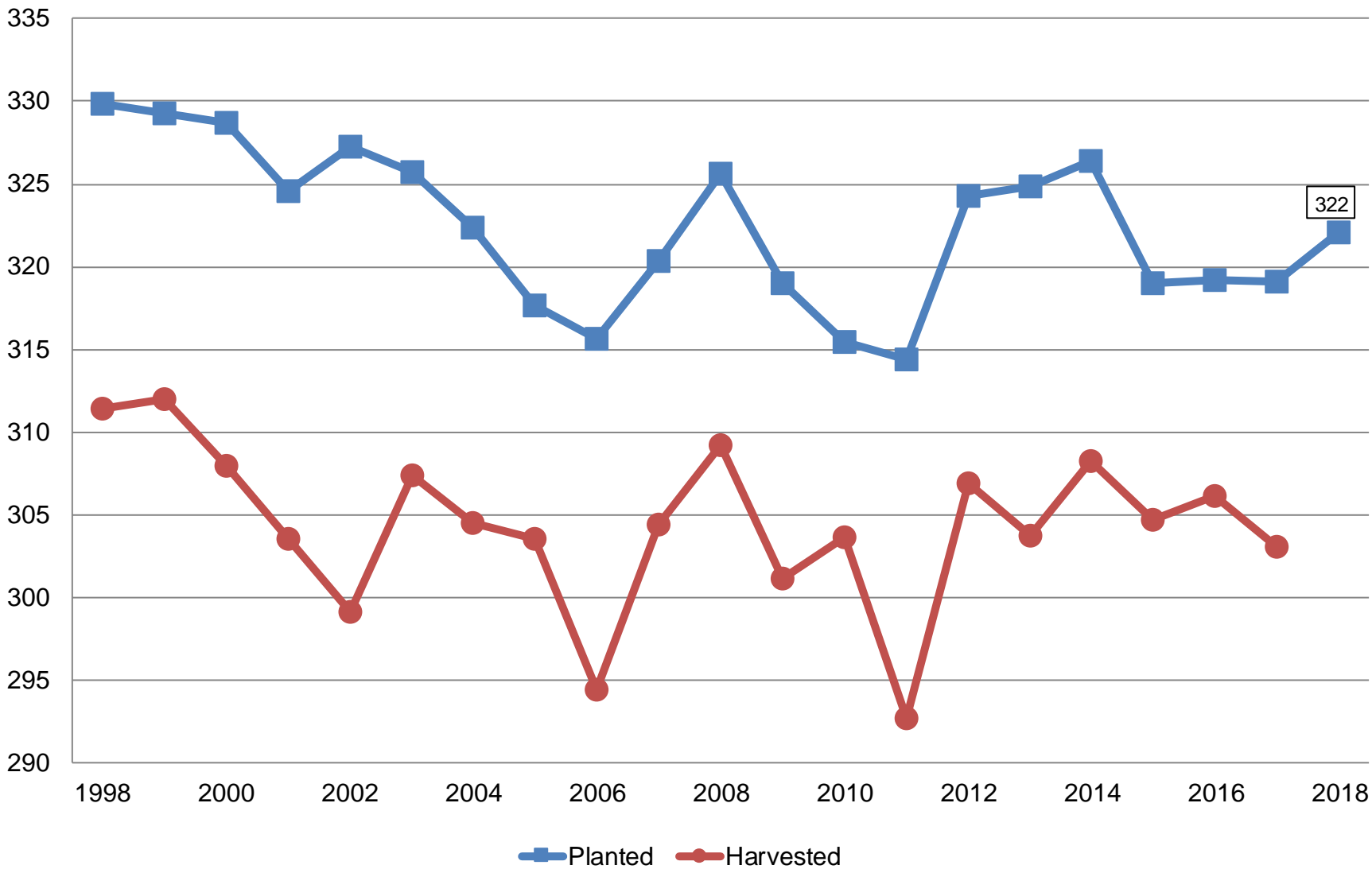
## United States

Year	Principal Crops	Change From Previous Year
	<i>Million Acres</i>	
2009	319.0	-6.6
2010	315.4	-3.6
2011	314.3	-1.1
2012	324.3	+10.0
2013	324.9	+0.6
2014	326.4	+1.6
2015	319.0	-7.5
2016	319.2	+0.3
2017	319.1	-0.1
2018	322.1	+2.9

# Principal Crops

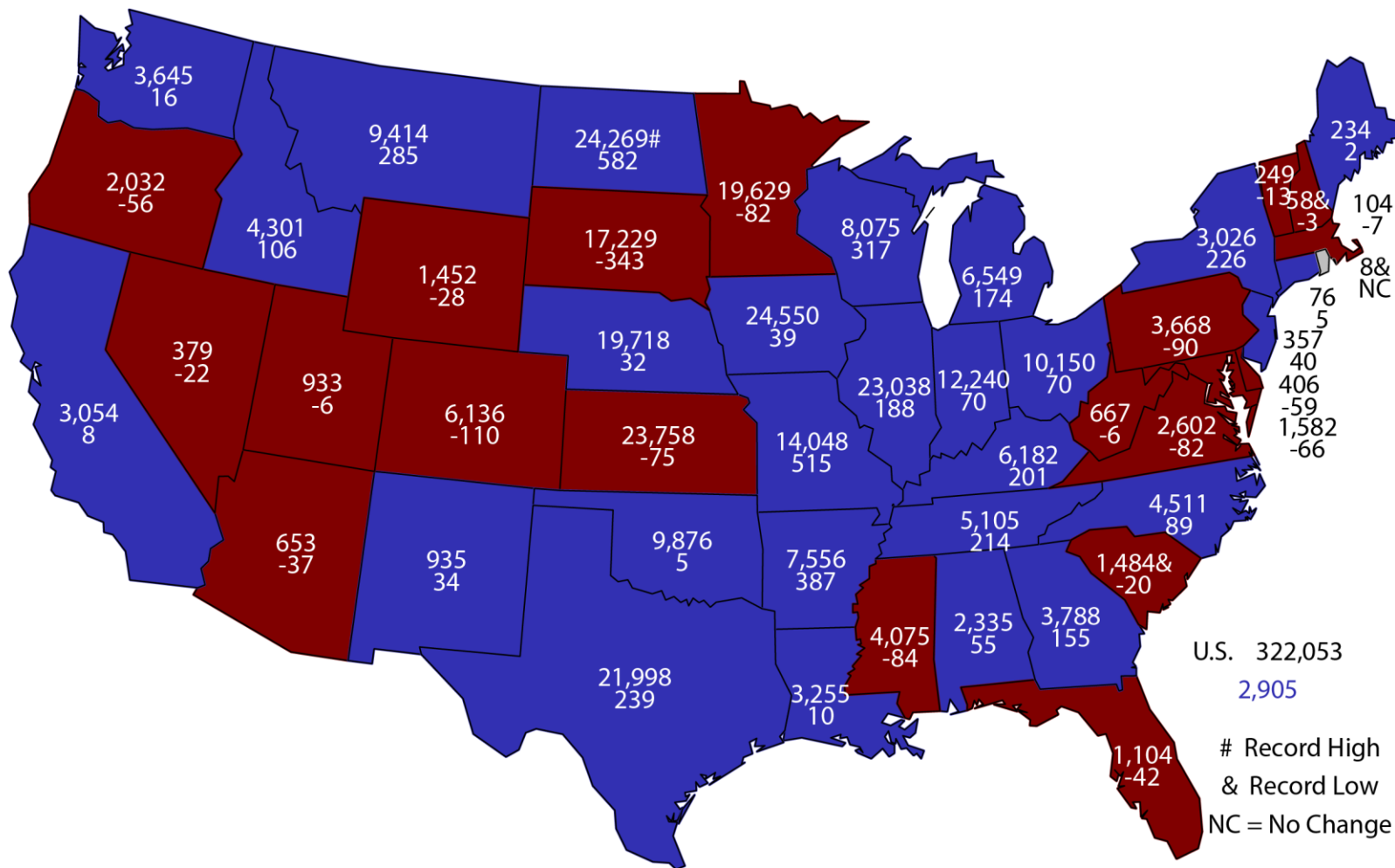
## United States

Million Acres



# 2018 Principal Crops Planted Area

(000) Acres and Change From Previous Year



U.S. 322,053  
2,905

# Record High  
& Record Low  
NC = No Change



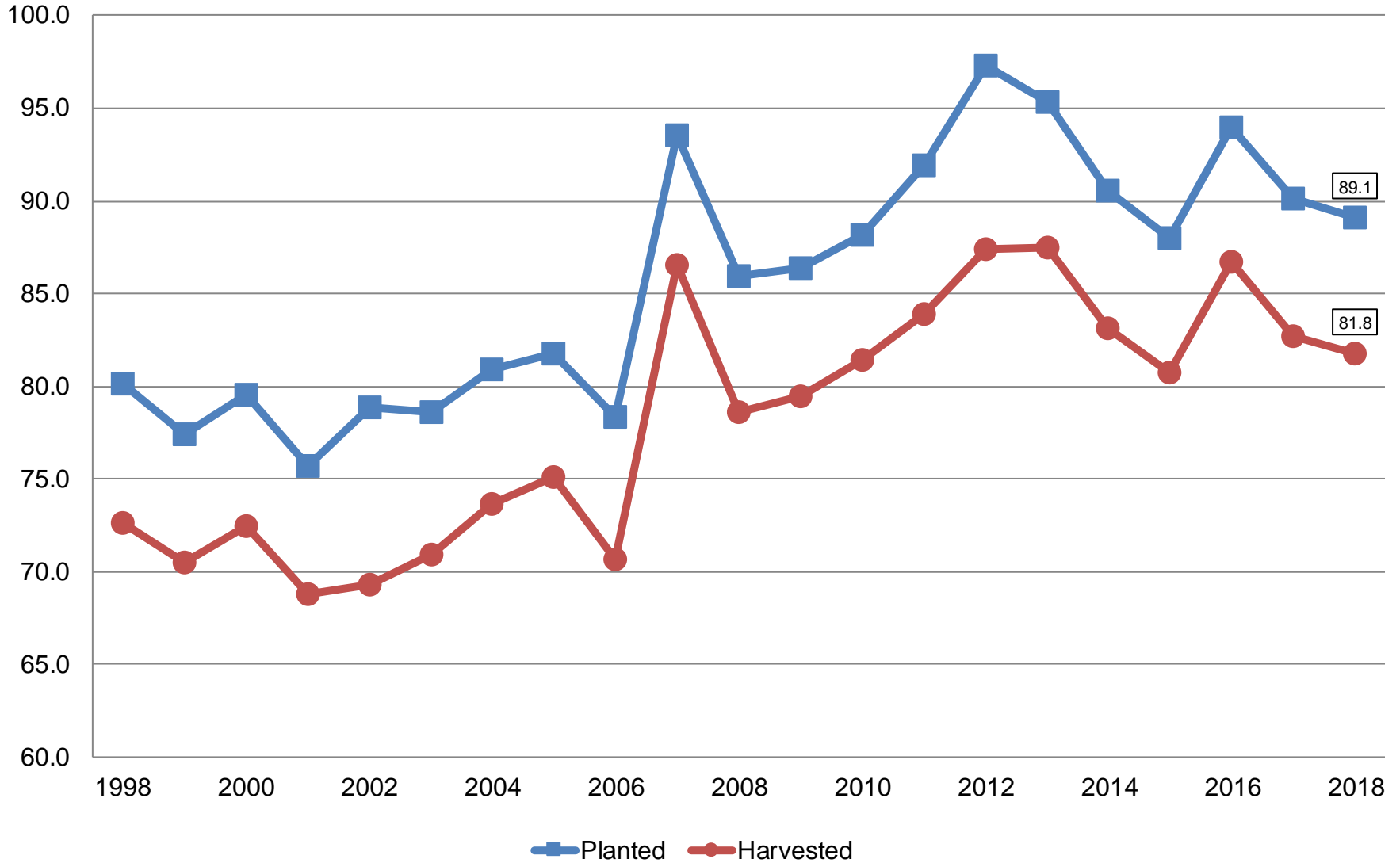
# June 2018 Acreage

Crop	Unit	June 2018	% Change From Previous Estimate	% Change From Previous Season
Corn				
Planted	Mil Ac	89.1	+1.3	-1.2
Harvested	Mil Ac	81.8	NA	-1.1



# Corn Acres United States

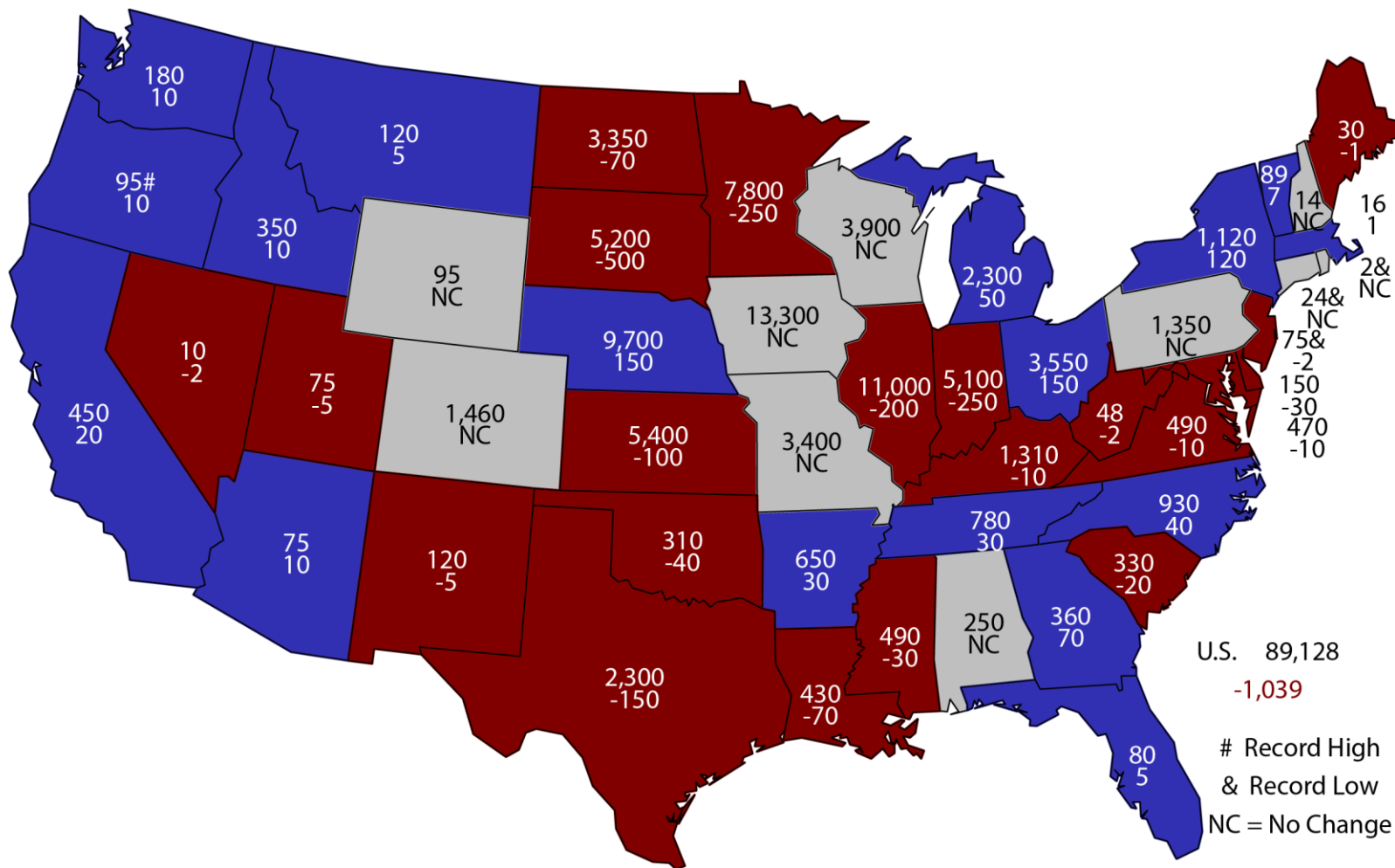
Million Acres





# 2018 Corn Planted Area

(000) Acres and Change From Previous Year



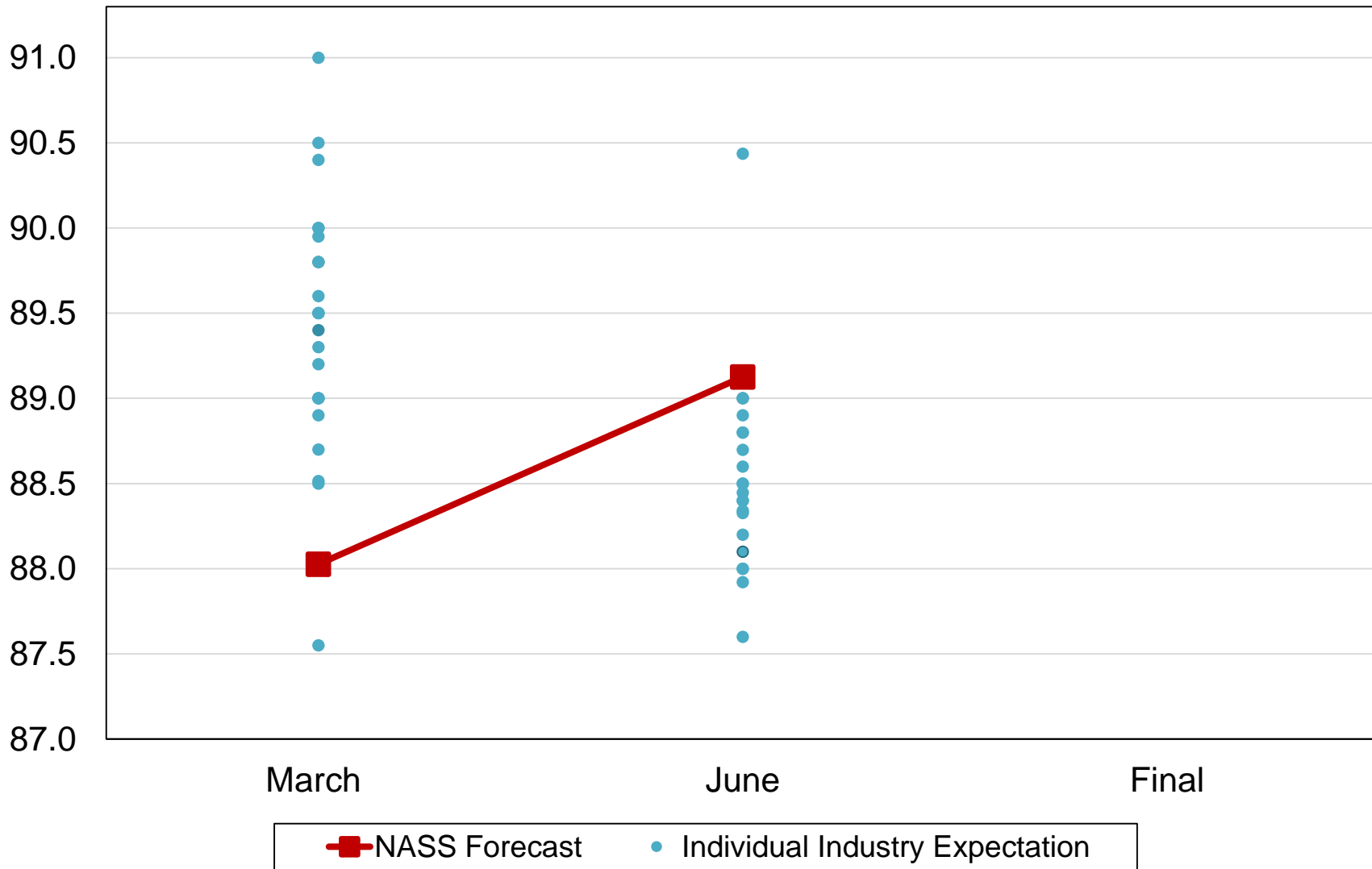
U.S. 89,128  
 -1,039  
 # Record High  
 & Record Low  
 NC = No Change



Million Acres



# 2018 United States Corn Planted Acres Industry Expectations vs NASS





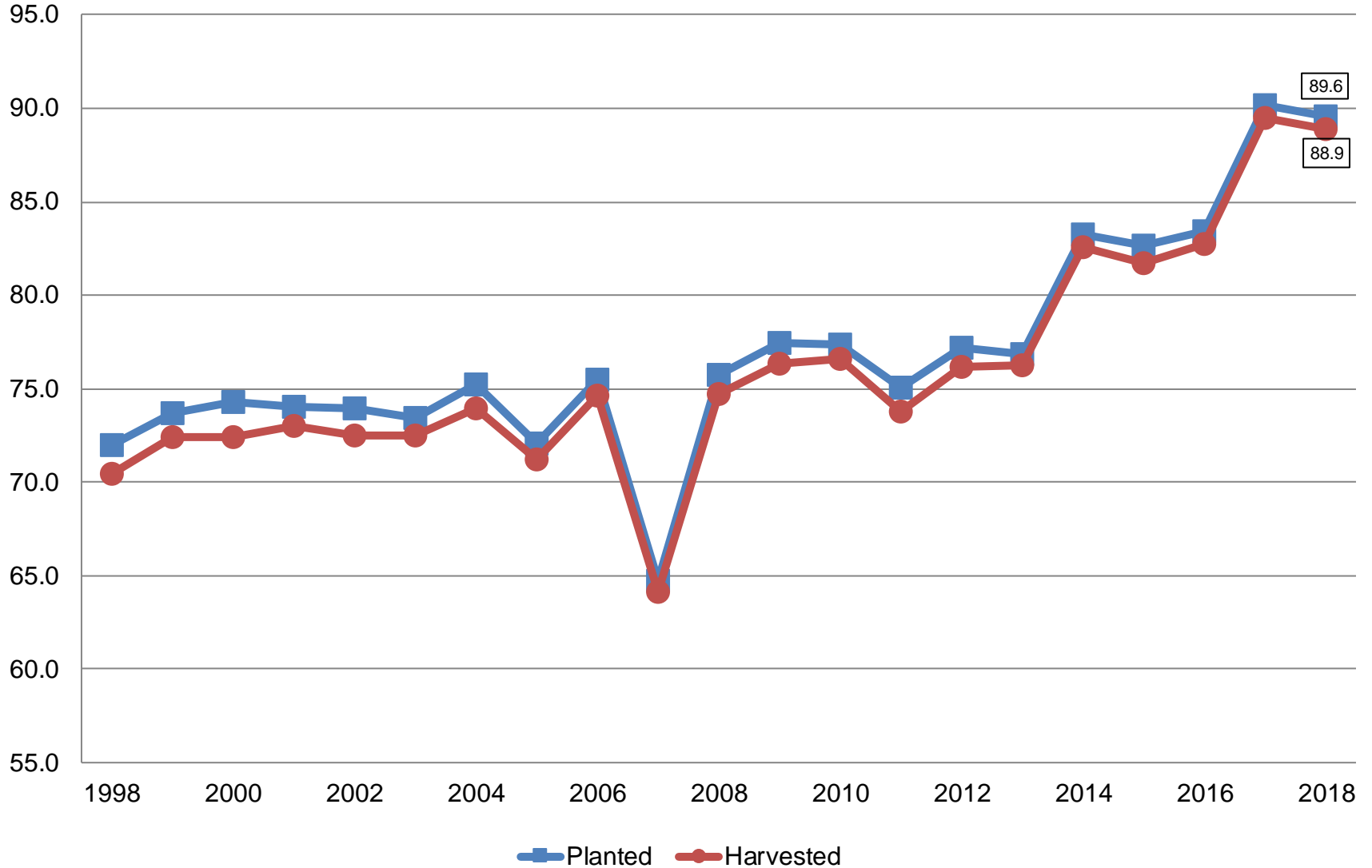
# June 2018 Acreage

Crop	Unit	June 2018	% Change From Previous Estimate	% Change From Previous Season
Soybeans				
Planted	Mil Ac	89.6	+0.6	-0.6
Harvested	Mil Ac	88.9	NA	-0.7



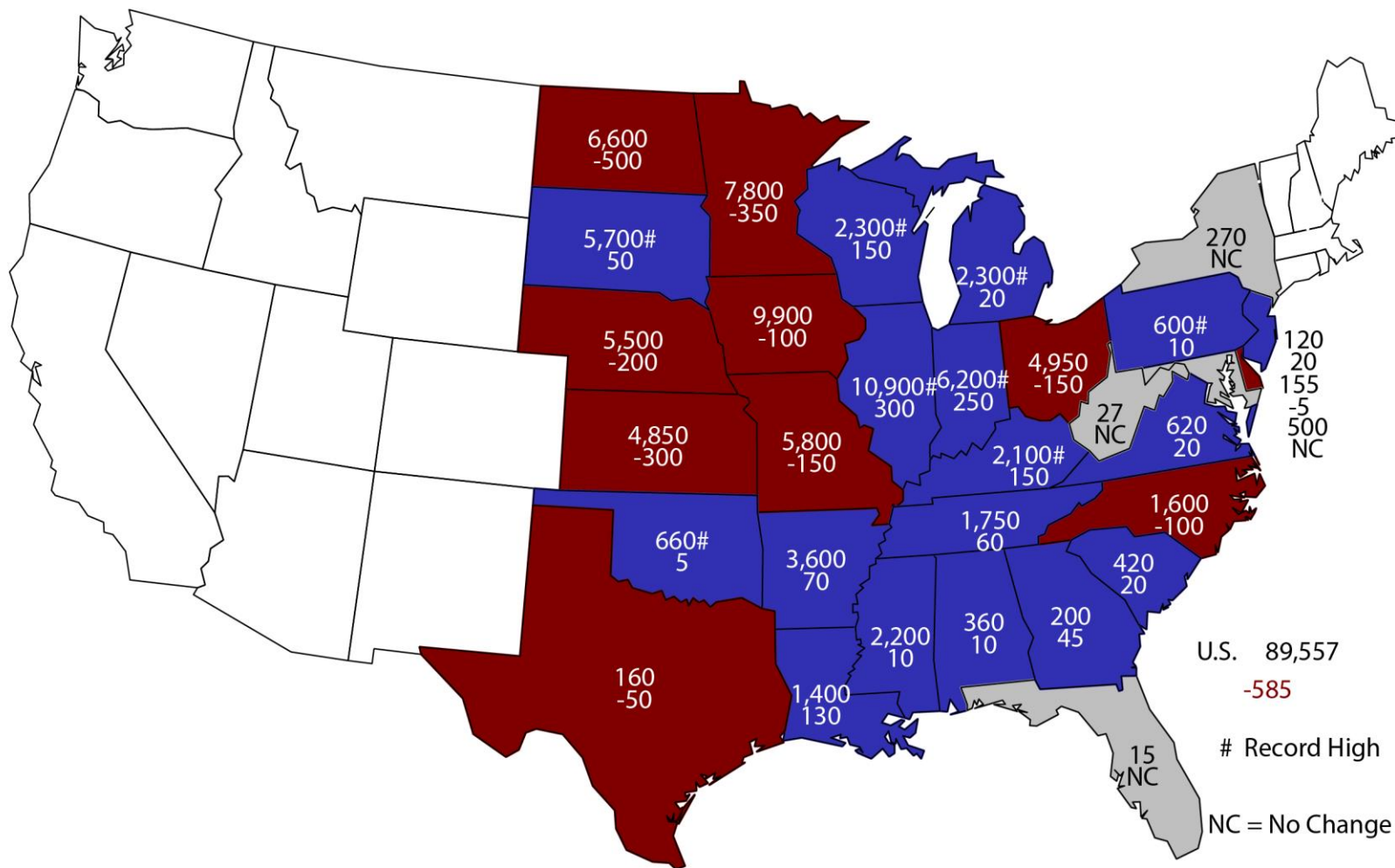
# Soybean Acres United States

Million Acres



# 2018 Soybean Planted Area

(000) Acres and Change From Previous Year

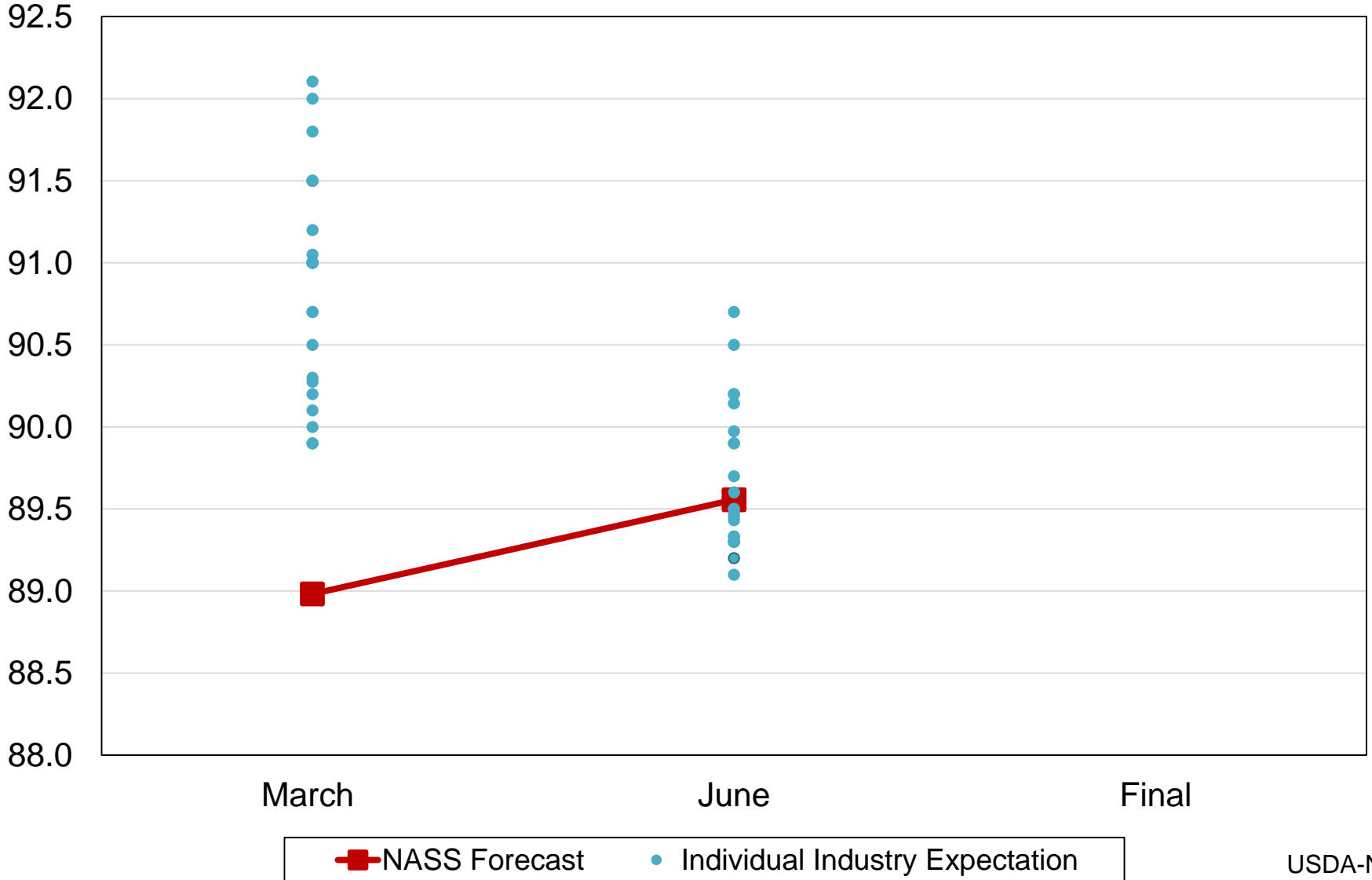


U.S. 89,557  
 -585  
 # Record High  
 NC = No Change



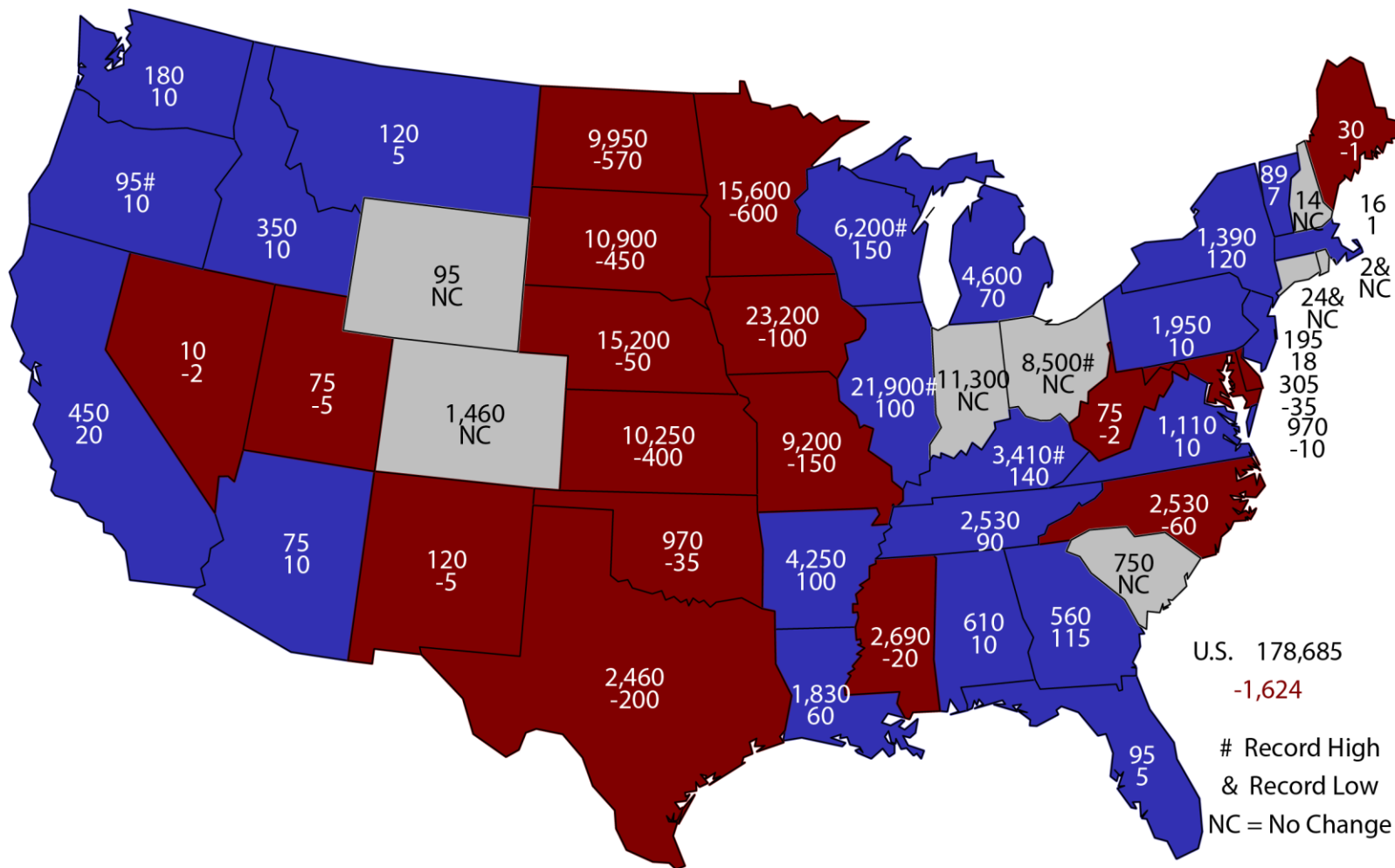
# 2018 United States Soybean Planted Acres Industry Expectations vs NASS

Million Acres



# 2018 Combined Corn & Soybean Planted Area

(000) Acres and Change From Previous Year



U.S. 178,685  
 -1,624  
 # Record High  
 & Record Low  
 NC = No Change



# June 2018 Acreage

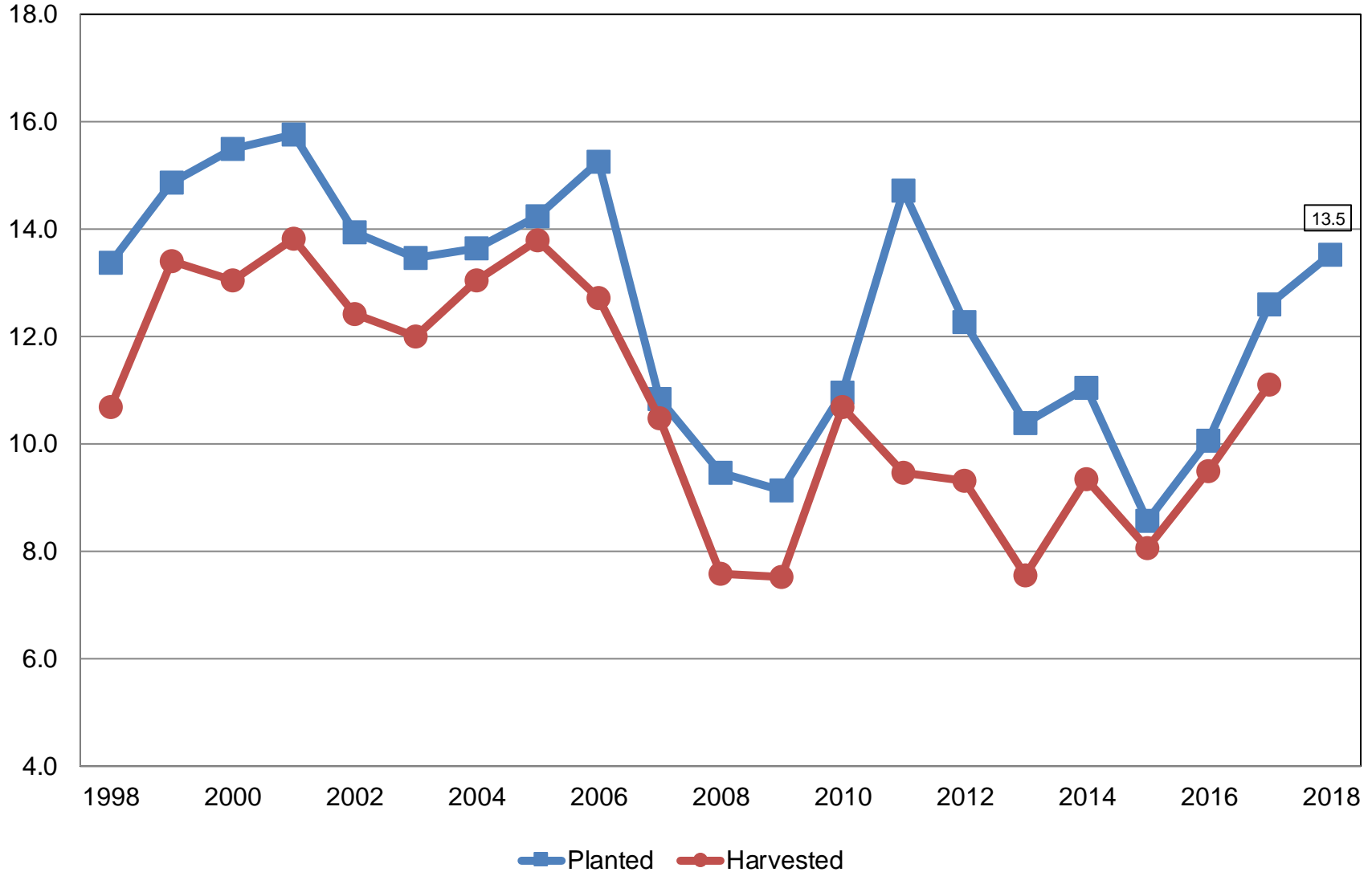
Crop	Unit	June 2018	% Change From Previous Estimate	% Change From Previous Season
All Cotton				
Planted	Mil Ac	13.5	+0.4	+7.2
Upland Cotton				
Planted	Mil Ac	13.3	+0.5	+7.4
Pima Cotton				
Planted	Thou Ac	243	-7.3	-3.8





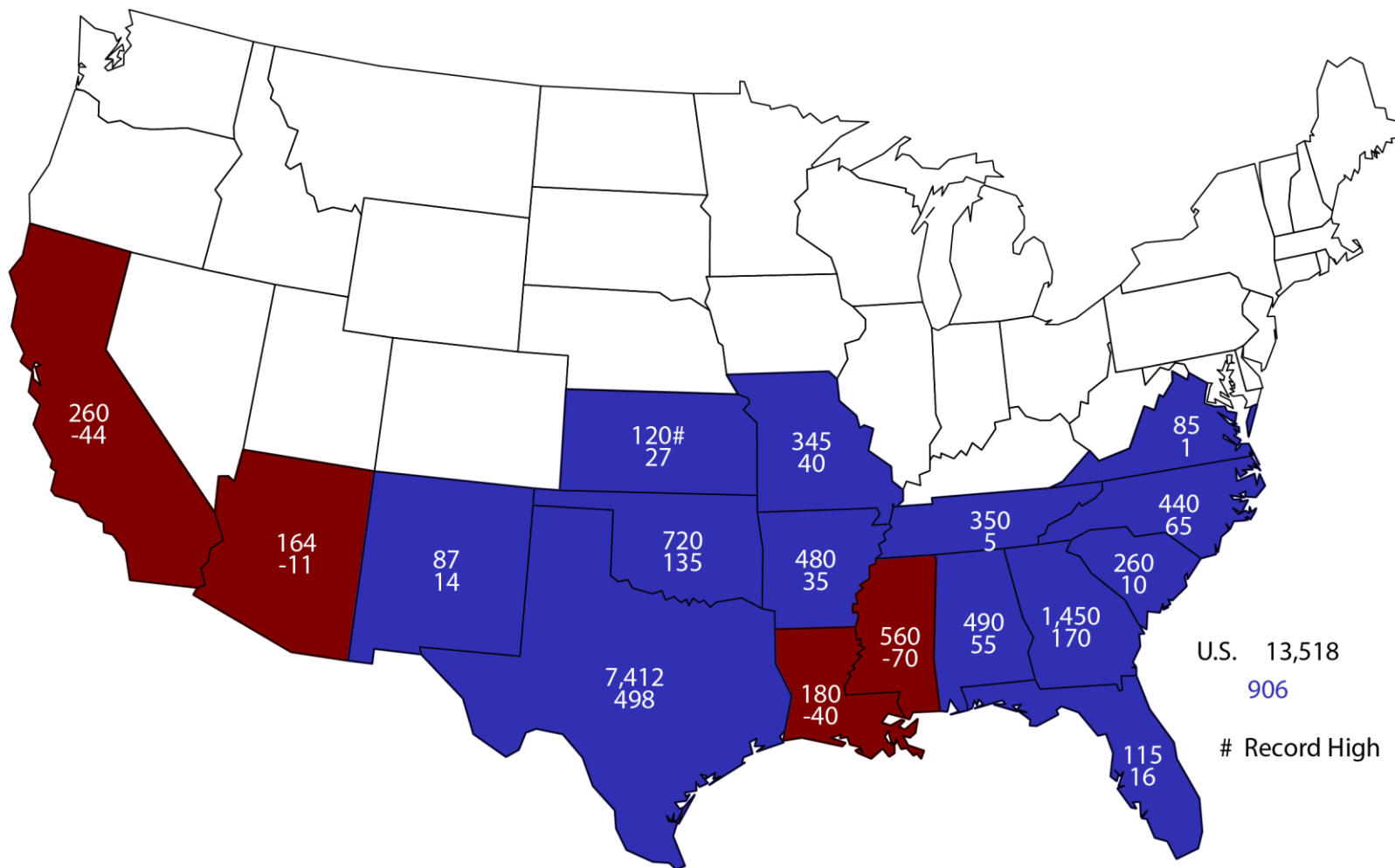
# All Cotton Acres United States

Million Acres



# 2018 All Cotton Planted Area

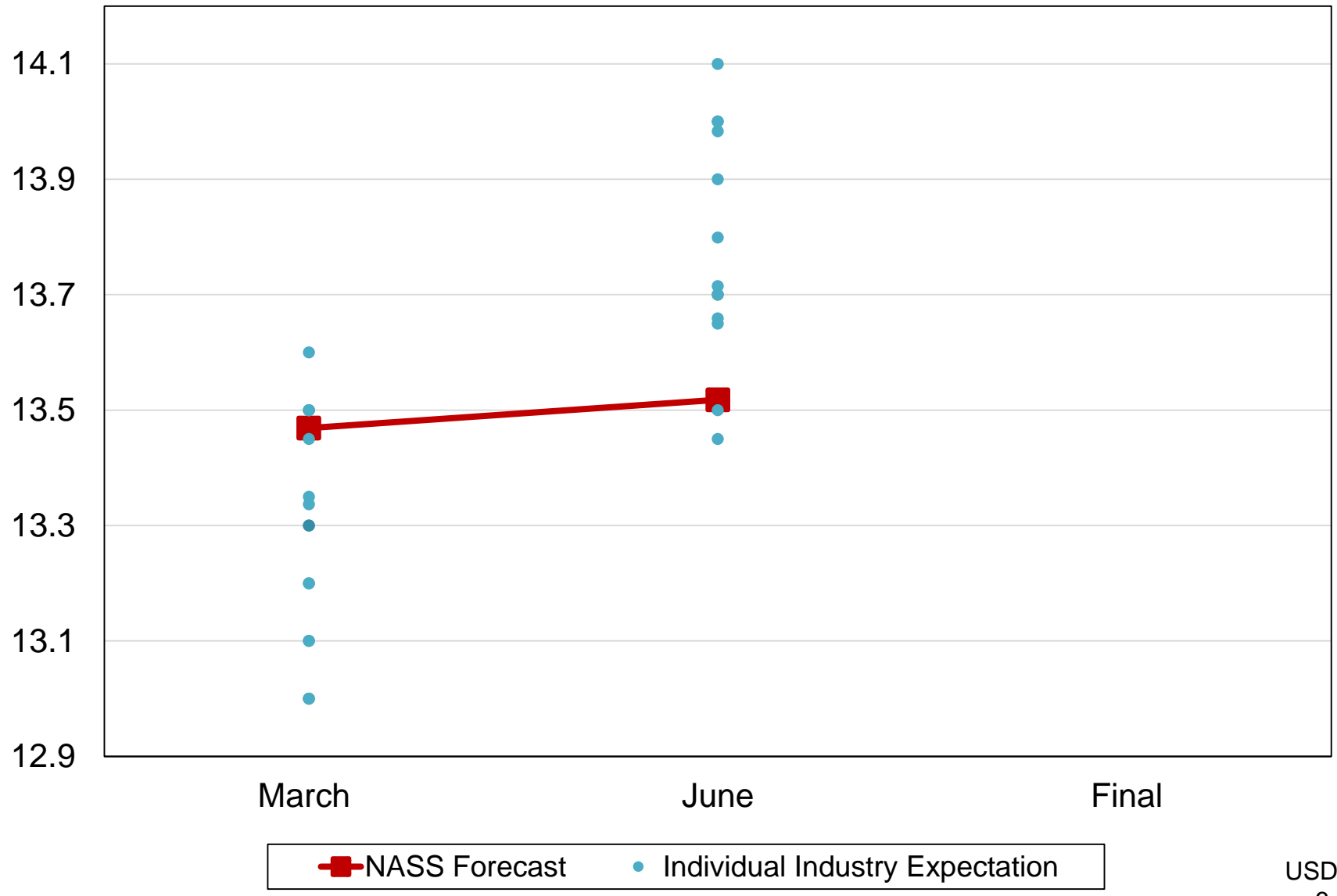
## Acres (000) and Change From Previous Year



# Record High

# 2018 United States Cotton Planted Acres

## Industry Expectations vs NASS





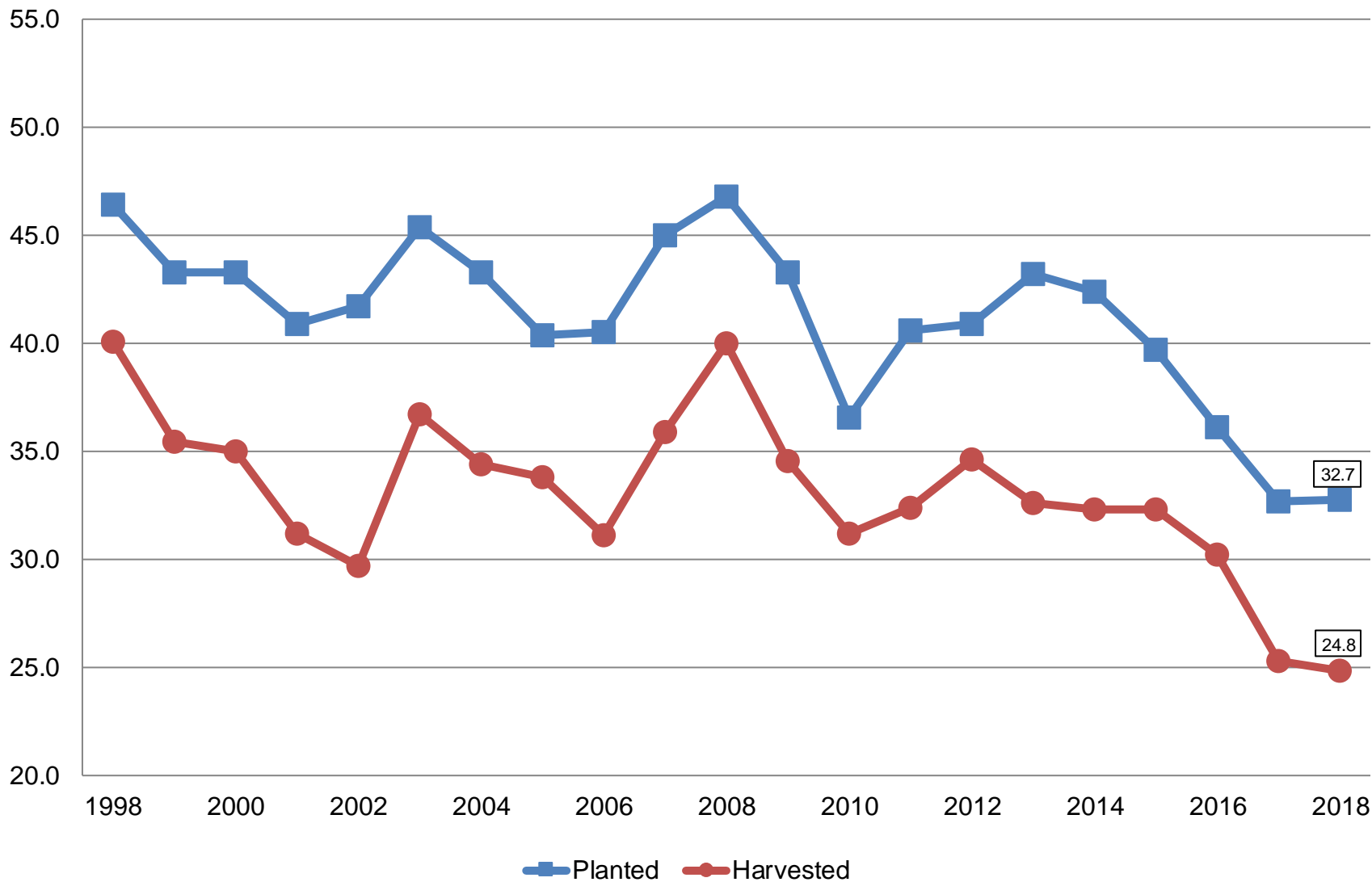
# June 2018 Acreage

Crop	Unit	June 2018	% Change From Previous Estimate	% Change From Previous Season
Winter Wheat				
Planted	Mil Ac	32.7	+0.1	+0.1
Harvested	Mil Ac	24.8	+0.3	-1.8
Spring Wheat				
Planted	Mil Ac	13.2	+4.6	+19.9
Harvested	Mil Ac	12.9	NA	+27.0
Durum Wheat				
Planted	Mil Ac	1.89	-5.8	-18.2
Harvested	Mil Ac	1.84	NA	-13.8
All Wheat				
Planted	Mil Ac	47.8	+1.0	+3.9
Harvested	Mil Ac	39.6	NA	+5.3



# Winter Wheat Acres United States

Million Acres



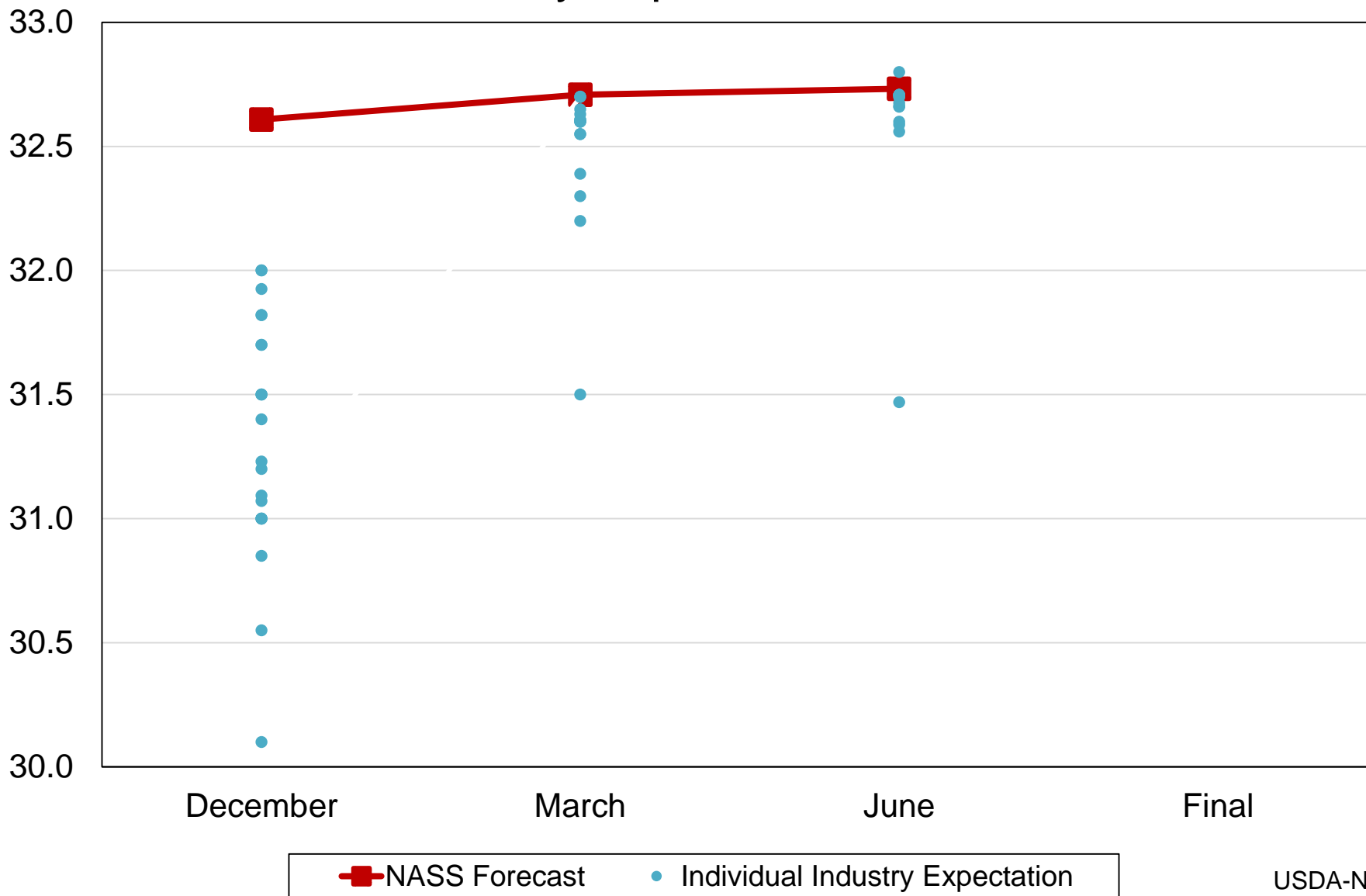




# 2018 United States Winter Wheat Planted Acres

## Industry Expectations vs NASS

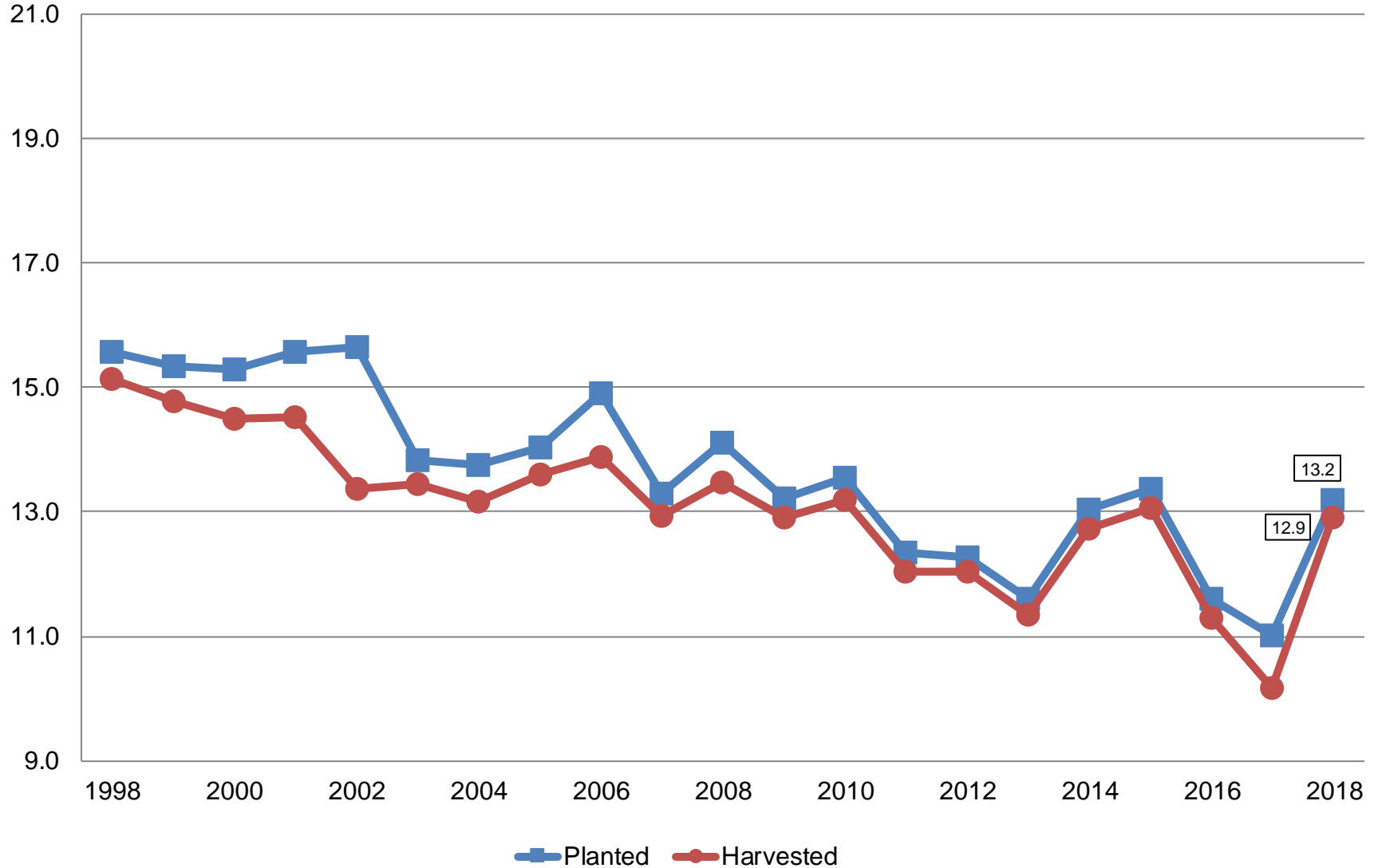
Million Acres





# Other Spring Wheat Acres United States

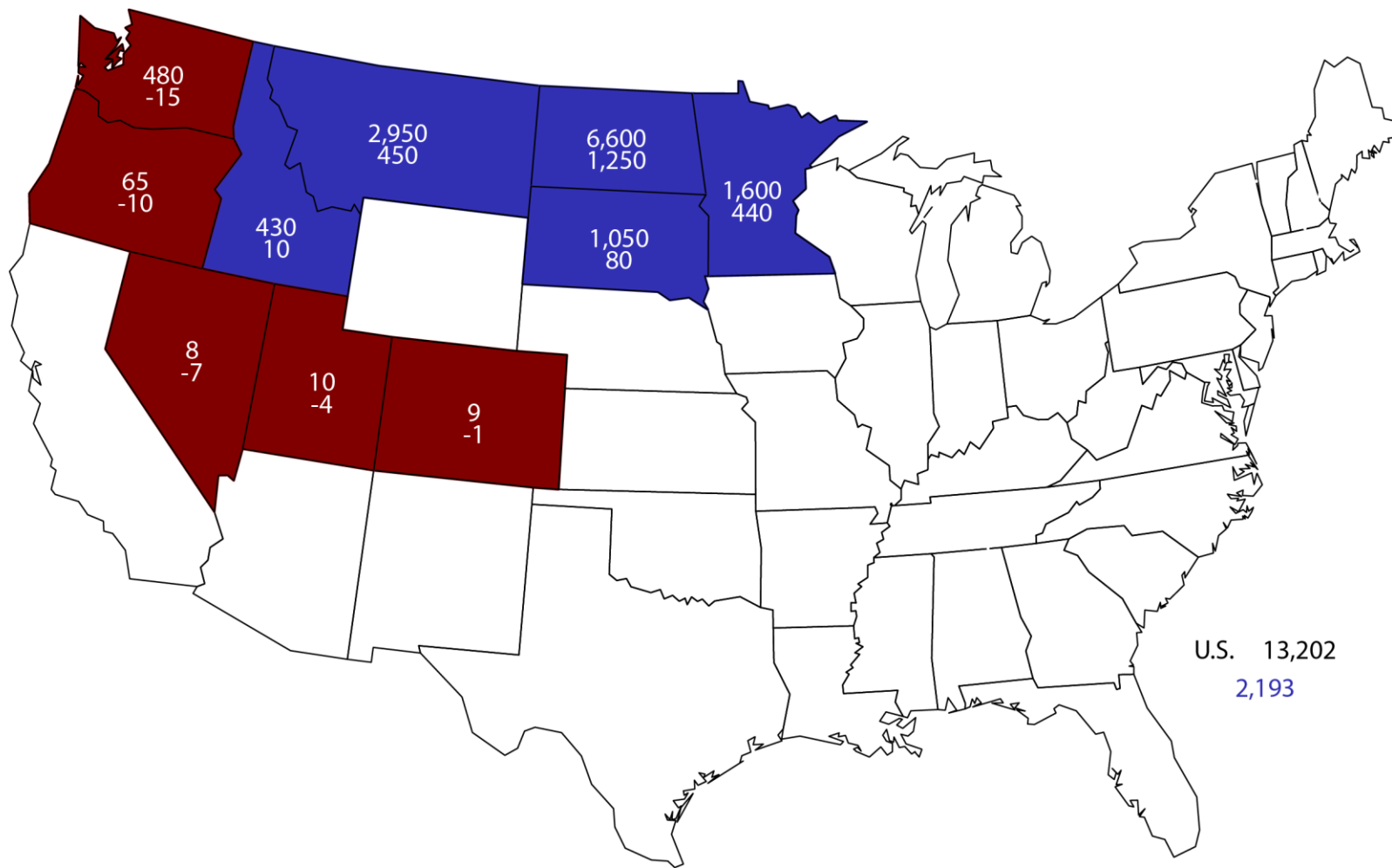
Million Acres





# 2018 Other Spring Wheat Planted Area

(000) Acres and Change From Previous Year



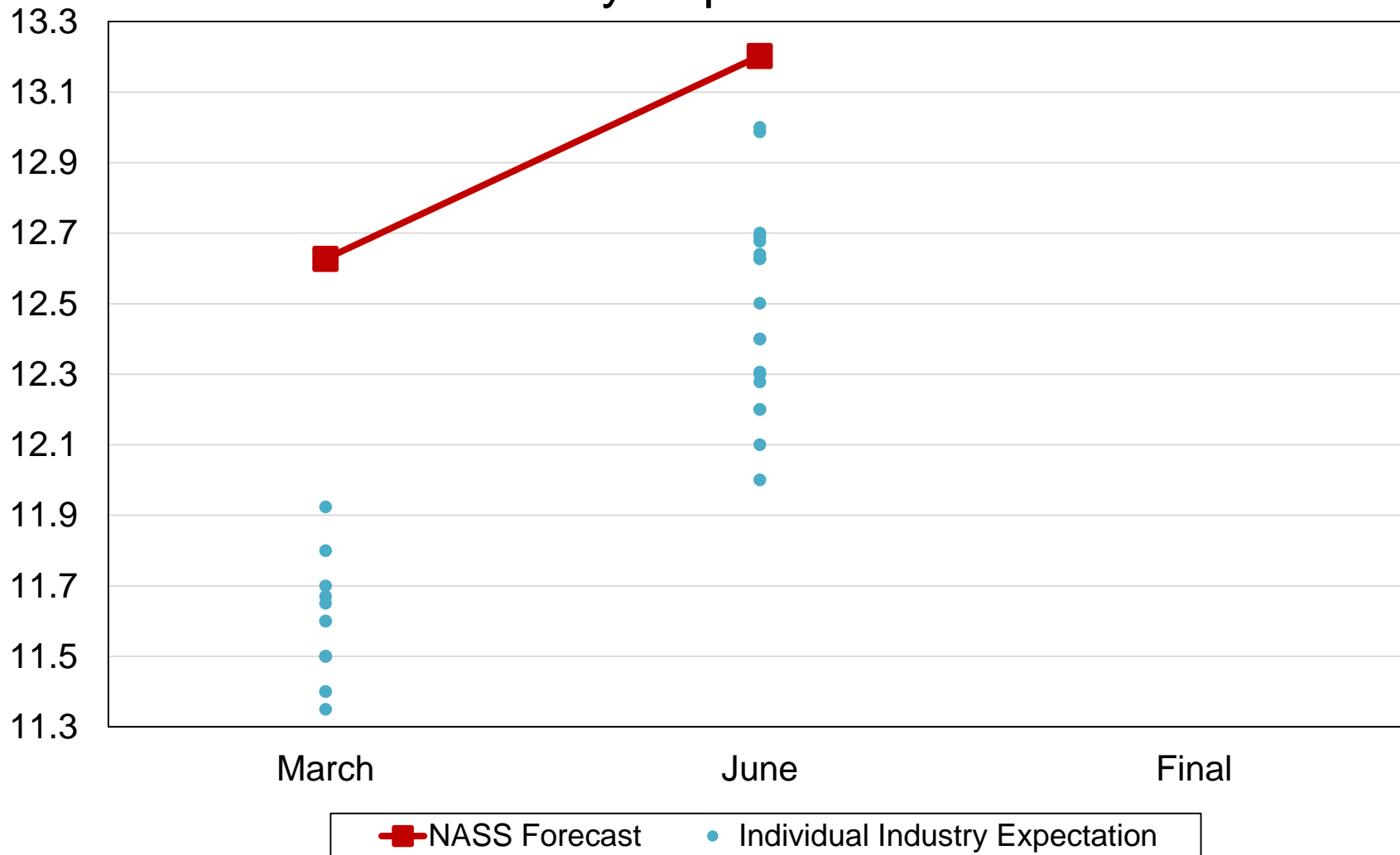


Million Acres



# 2018 United States Other Spring Wheat Planted Acres

## Industry Expectations vs NASS

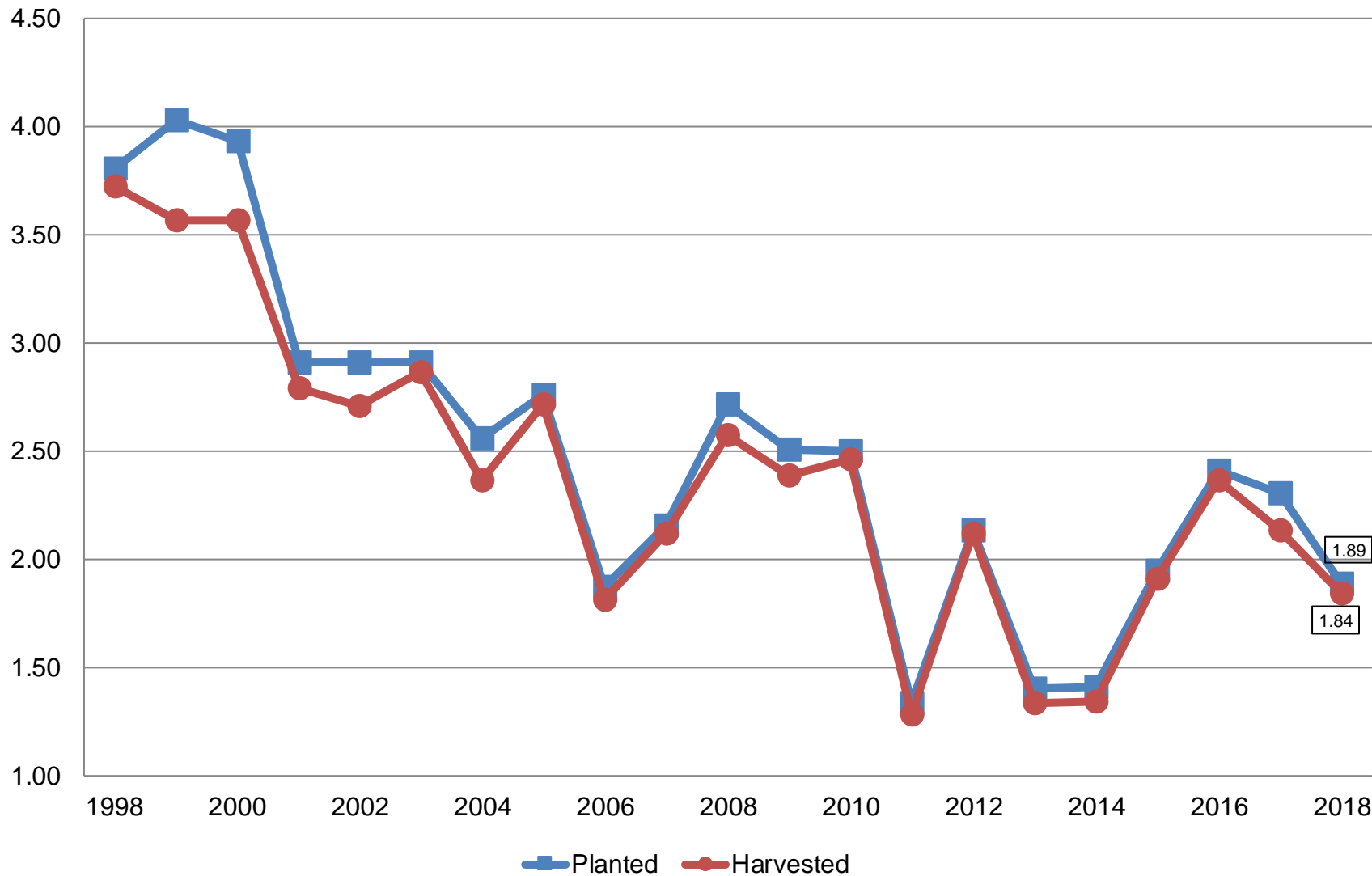




# Durum Wheat Acres

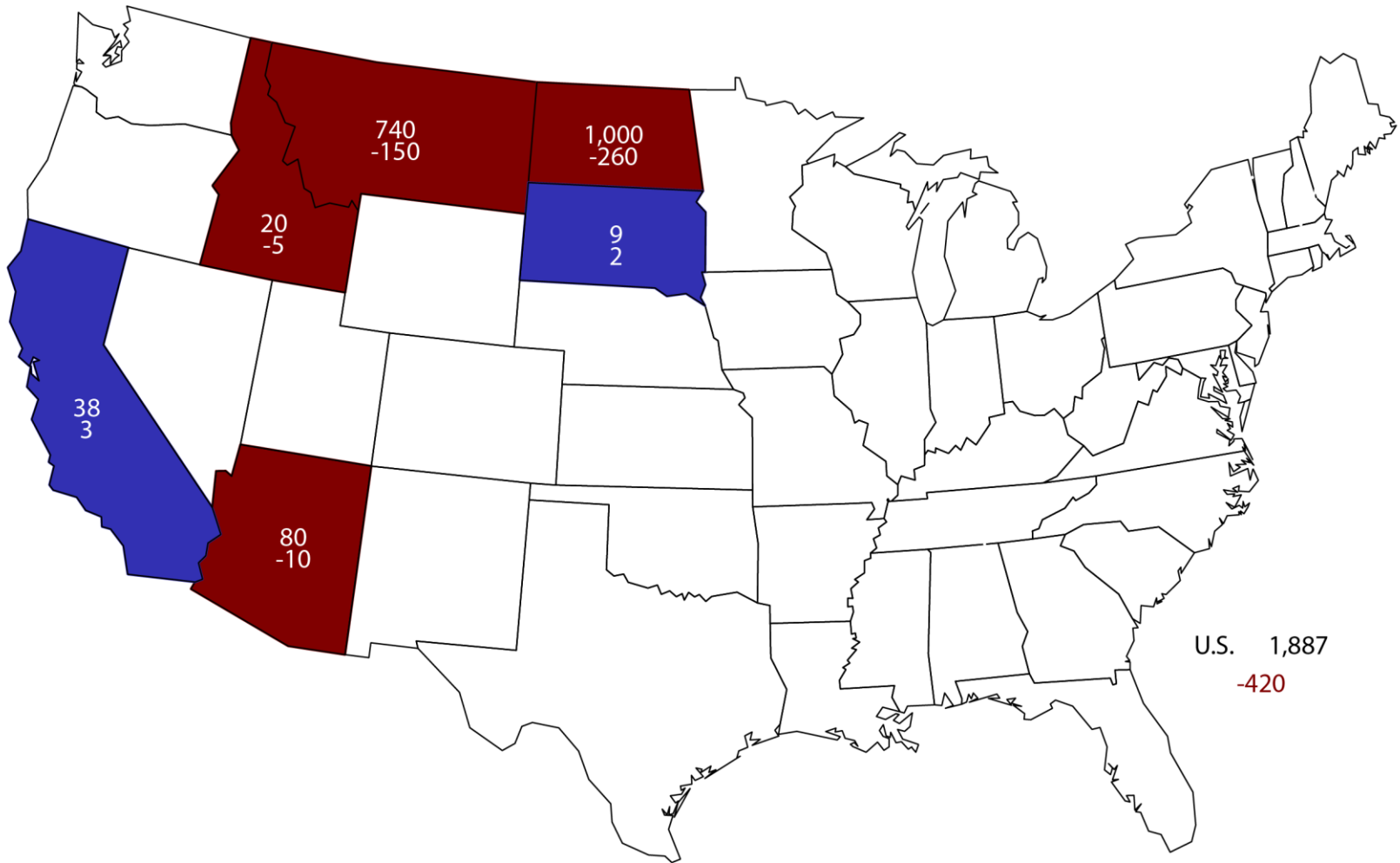
## United States

Million Acres

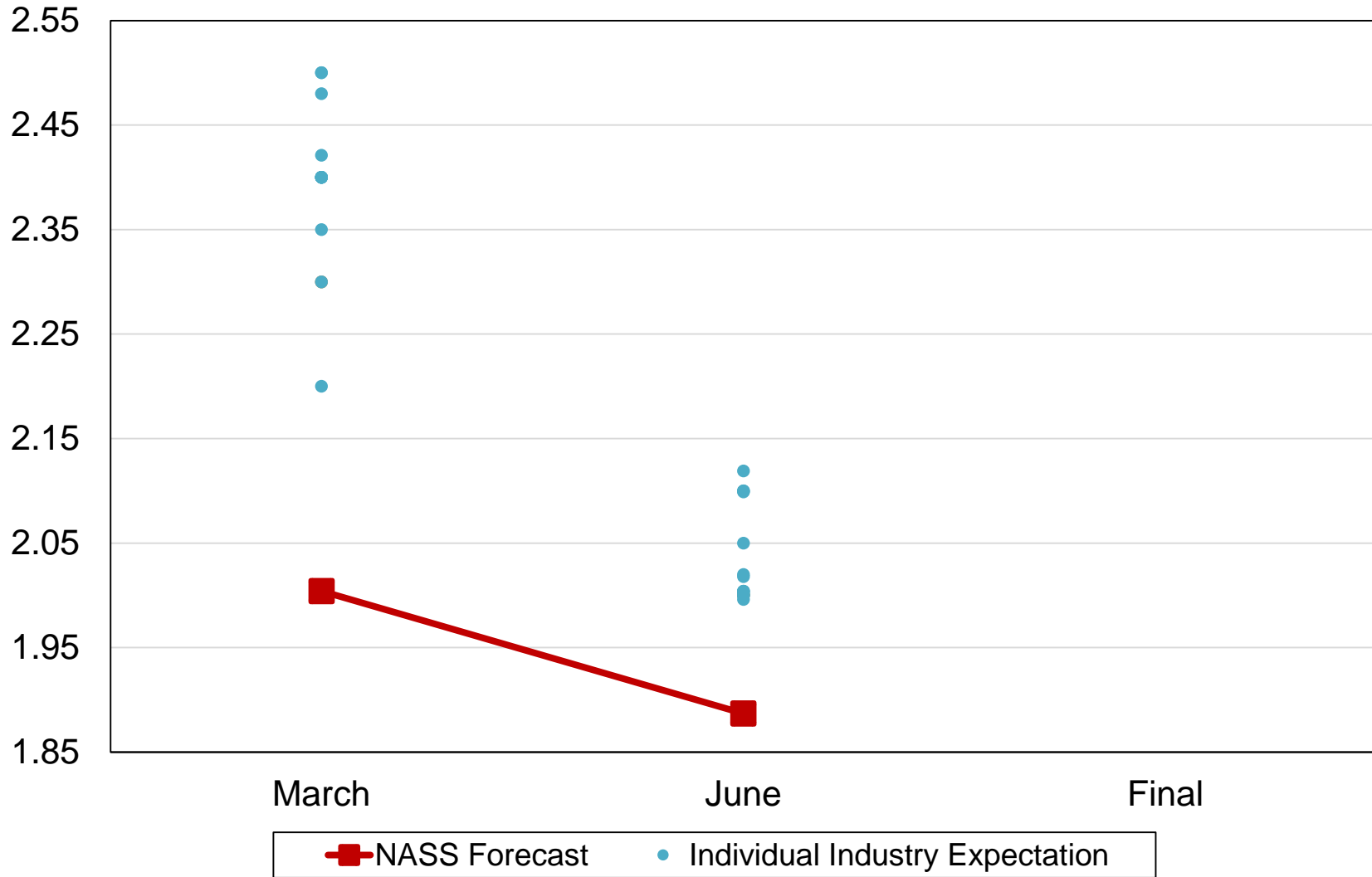


# 2018 Durum Wheat Planted Area

(000) Acres and Change From Previous Year



# 2018 United States Durum Wheat Planted Acres Industry Expectations vs NASS





## June 2018 Acreage

Crop	Unit	June 2018	% Change From Previous Estimate	% Change From Previous Season
Planted Area				
Sorghum	Mil Ac	6.04	+1.8	+7.4
Oats	Mil Ac	2.89	+6.4	+11.6
Barley	Mil Ac	2.55	+11.5	+2.7
Harvested Area				
All Hay	Mil Ac	55.1	+2.5	+2.4
Alfalfa	Mil Ac	17.4	NA	+4.8
Other Hay	Mil Ac	37.7	NA	+1.3



# June 2018 Acreage

Crop	Unit	June 2018	% Change From Previous Estimate	% Change From Previous Season
Planted Area				
Rice	Mil Ac	2.84	+5.6	+15.3
Peanuts	Mil Ac	1.50	-2.2	-19.7
Sugarbeets	Mil Ac	1.12	+0.3	-1.4
Dry Beans	Mil Ac	1.83	-9.7	-12.3
Potatoes, Fall	Thou Ac	912	NA	+0.4
Potatoes, Summer	Thou Ac	64.2	NA	-6.0
Sweet Potatoes	Thou Ac	160	+0.6	-1.3
Harvested Area				
Sugarcane	Thou Ac	885	NA	-2.1
Tobacco	Thou Ac	304	-1.9	-5.5
Hops	Thou Ac	55.3	NA	+3.9



# June 2018 Acreage

Crop	Unit	June 2018	% Change From Previous Estimate	% Change From Previous Season
Planted				
A. Winter Peas	Thou Ac	14.5	-23.7	-45.3
Dry Peas	Thou Ac	881	-3.0	-21.9
Lentils	Thou Ac	789	-0.3	-28.5





# June 2018 Acreage

Crop	Unit	June 2018	% Change From Previous Estimate	% Change From Previous Season
Planted				
Sunflower	Mil Ac	1.46	+5.5	+4.1
Canola	Mil Ac	2.05	-1.1	-1.1
Flaxseed	Thou Ac	168	-25.3	-44.6
Safflower	Thou Ac	190	NA	+17.3
Mustard Seed	Thou Ac	91.5	NA	-11.2
Rye	Mil Ac	1.97	NA	+0.6
Proso Millet	Thou Ac	490	NA	+2.5
Rapeseed	Thou Ac	5.40	NA	-46.5

# Biotech Varieties

## % of All Planted Acres

Crop	Herbicide Resistant Only		Insect Resistant (Bt) Only	
	2017	2018	2017	2018
Corn	12	10	3	2
Soybeans	94	94	-	-
Upland Cotton	11	9	5	3

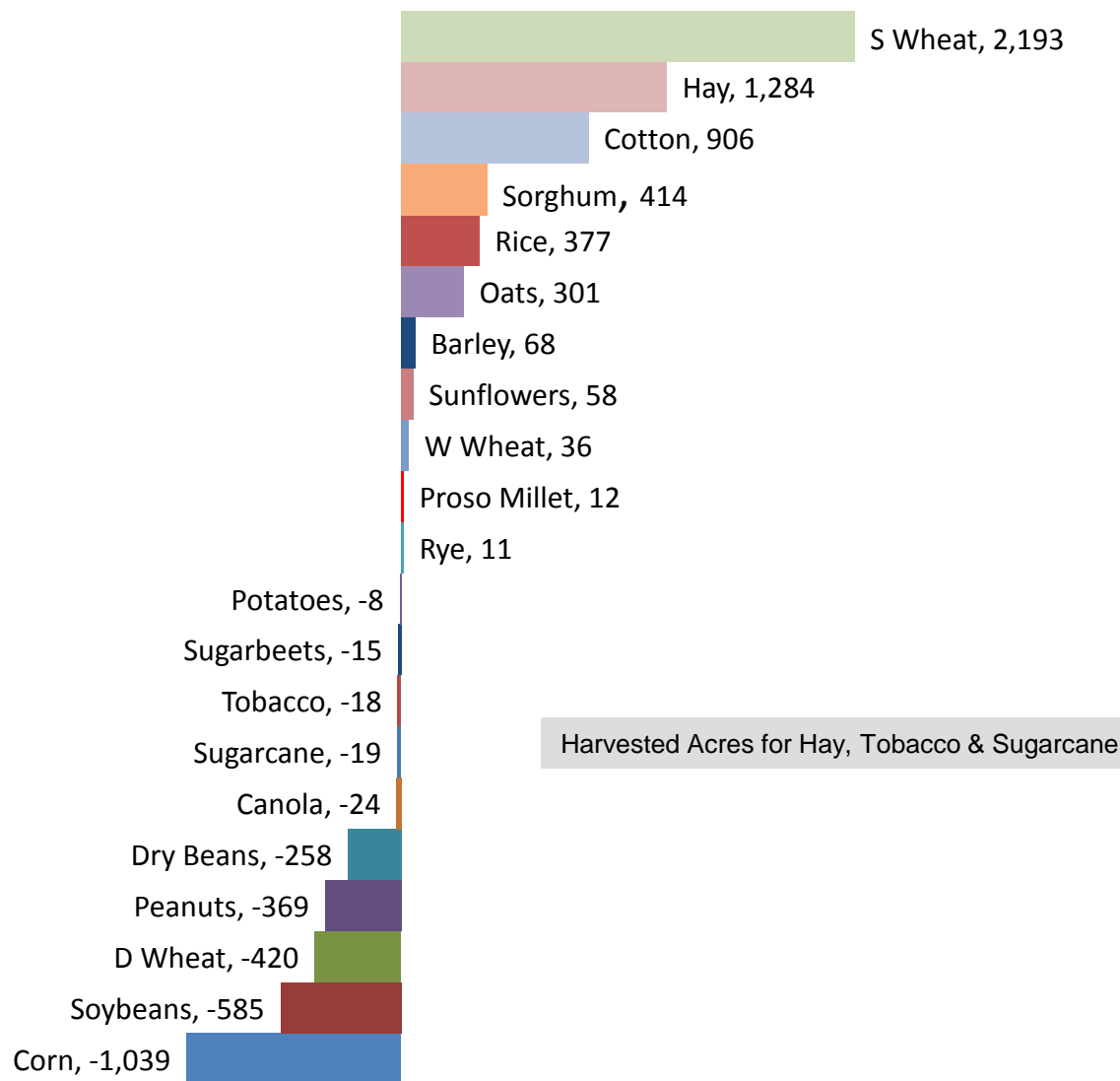
Crop	Stacked Gene		All Biotech Varieties	
	2017	2018	2017	2018
Corn	77	80	92	92
Soybeans	-	-	94	94
Upland Cotton	80	82	96	94



# Percent of Acres Remaining To Be Planted

Crop	2016	2017	2018
Corn	1.4	2.0	1.6
Soybeans	12.4	10.9	8.5
Other Spring Wheat	1.1	0.7	0.7
Durum Wheat	6.6	2.6	3.0

# Principal Crop Planted Acres (000) Changes United States: 2018 Compared With 2017



# June Grain Stocks

Crop	Unit	June 2018	% Change From Previous Estimate	% Change From Previous Year
Stocks				
Corn	Bil Bu	5.31	NA	+1.5
Soybeans	Bil Bu	1.22	NA	+26.5
Sorghum	Mil Bu	65.3	NA	-22.9
Flaxseed	Mil Bu	1.63	NA	-24.9
Rapeseed	Mil Lbs	1.29	NA	+61.9
Canola	Mil Lbs	193	NA	-18.9
Rice	Mil Cwt	45.1	NA	-32.1



# June Grain Stocks

Crop	Unit	June 2018	% Change From Previous Estimate	% Change From Previous Year
Stocks				
All Wheat	Bil Bu	1.10	NA	-6.8
Barley	Mil Bu	94.7	NA	-10.9
Oats	Mil Bu	41.0	NA	-18.5
Rye	Thou Bu	593	NA	-15.0

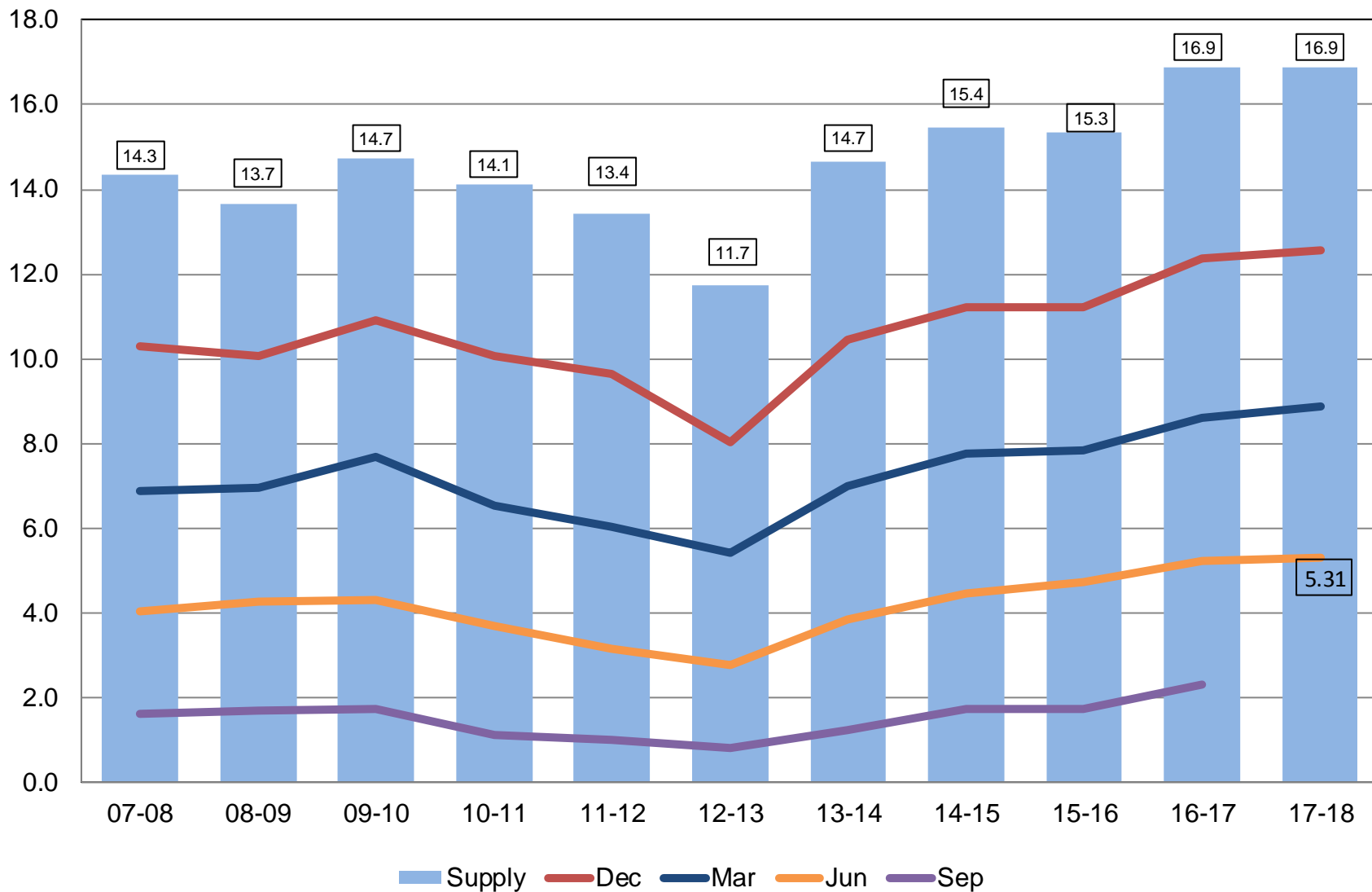


# June Grain Stocks

Crop	Unit	June 2018	% Change From Previous Estimate	% Change From Previous Season
Stocks				
Dry Peas	Mil Cwt	4.40	NA	+1.2
Lentils	Mil Cwt	1.76	NA	+45.0
A. Winter Peas	Thou Cwt	270	NA	NA
Chickpeas	Thou Cwt	880	NA	+108.0
Small	Thou Cwt	268	NA	+102.0
Large	Thou Cwt	612	NA	+111.0

# Corn Stocks United States

Billion Bushels

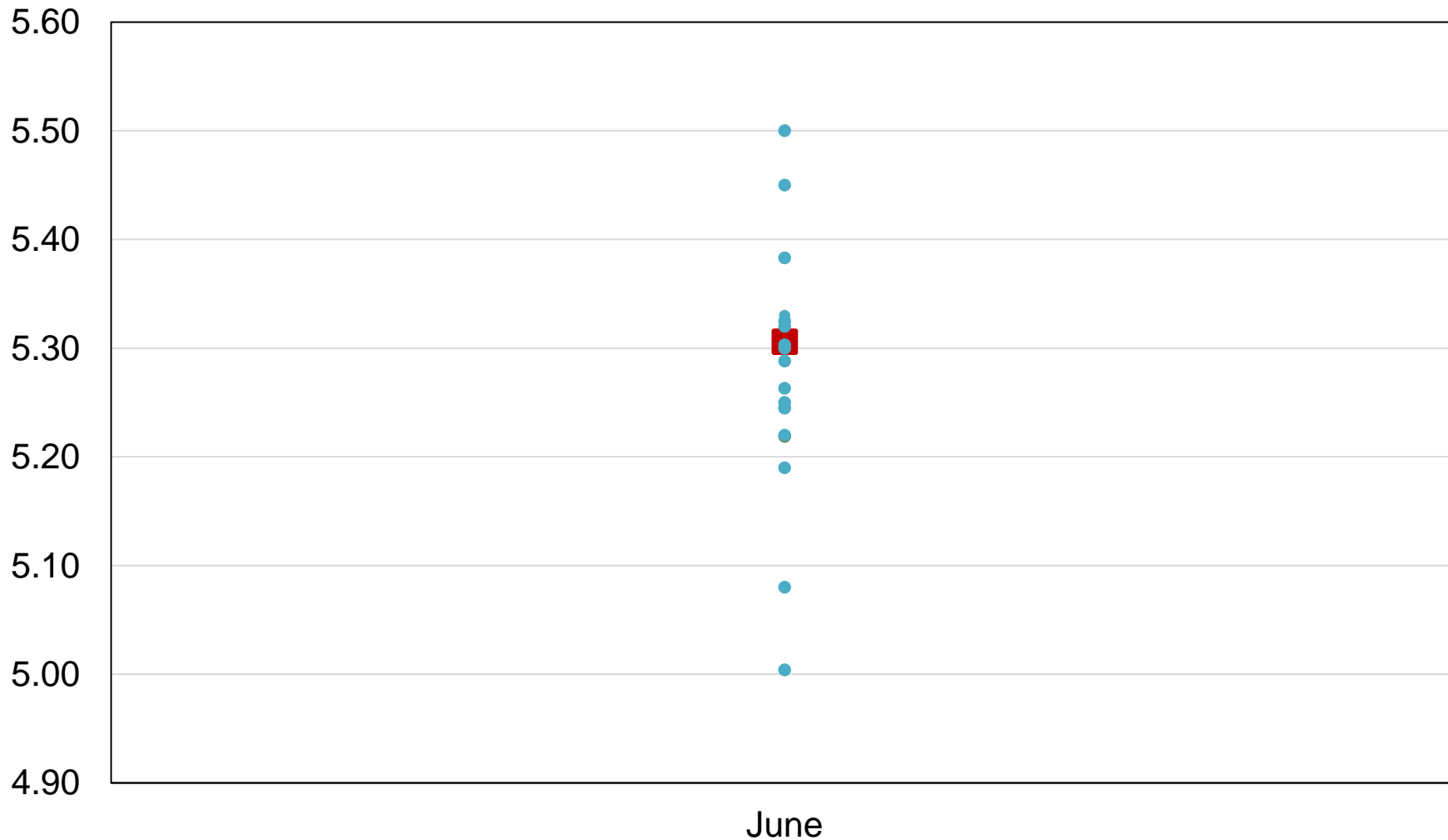






# 2018 United States Corn Stocks Industry Expectations vs NASS

Billion Bushels

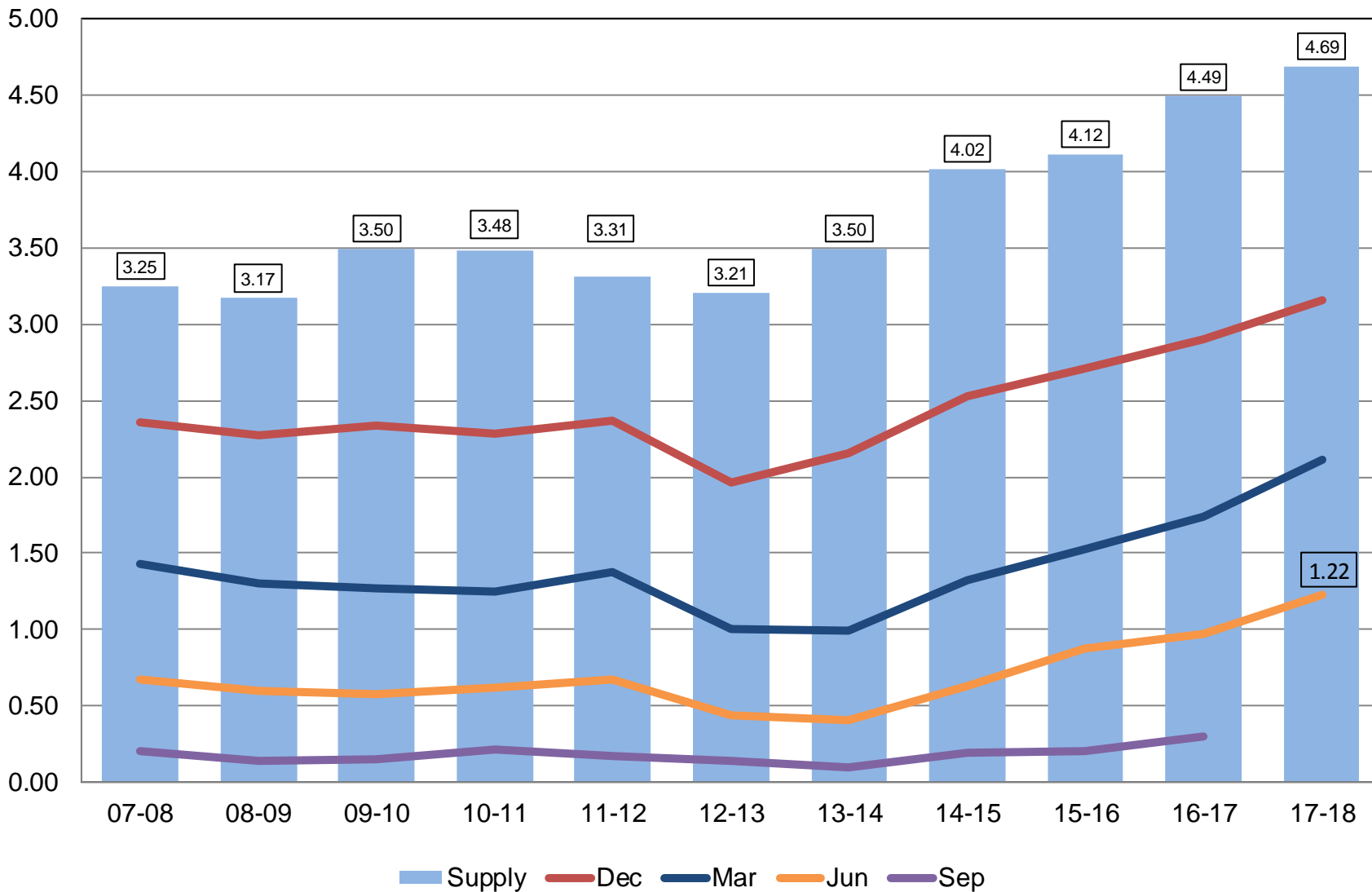


■ NASS Forecast    ● Individual Industry Expectation



# Soybean Stocks United States

Billion Bushels

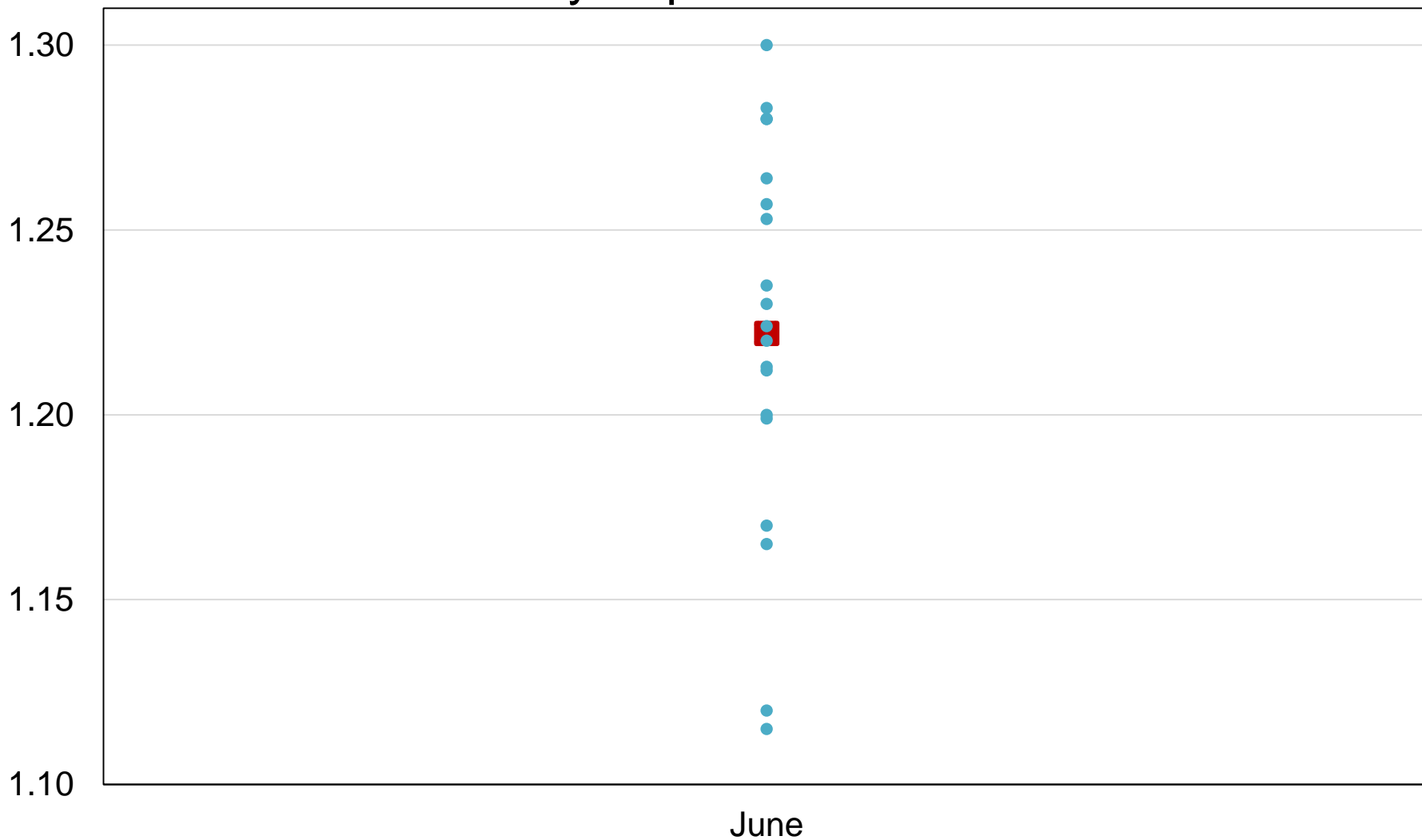




Billion Bushels



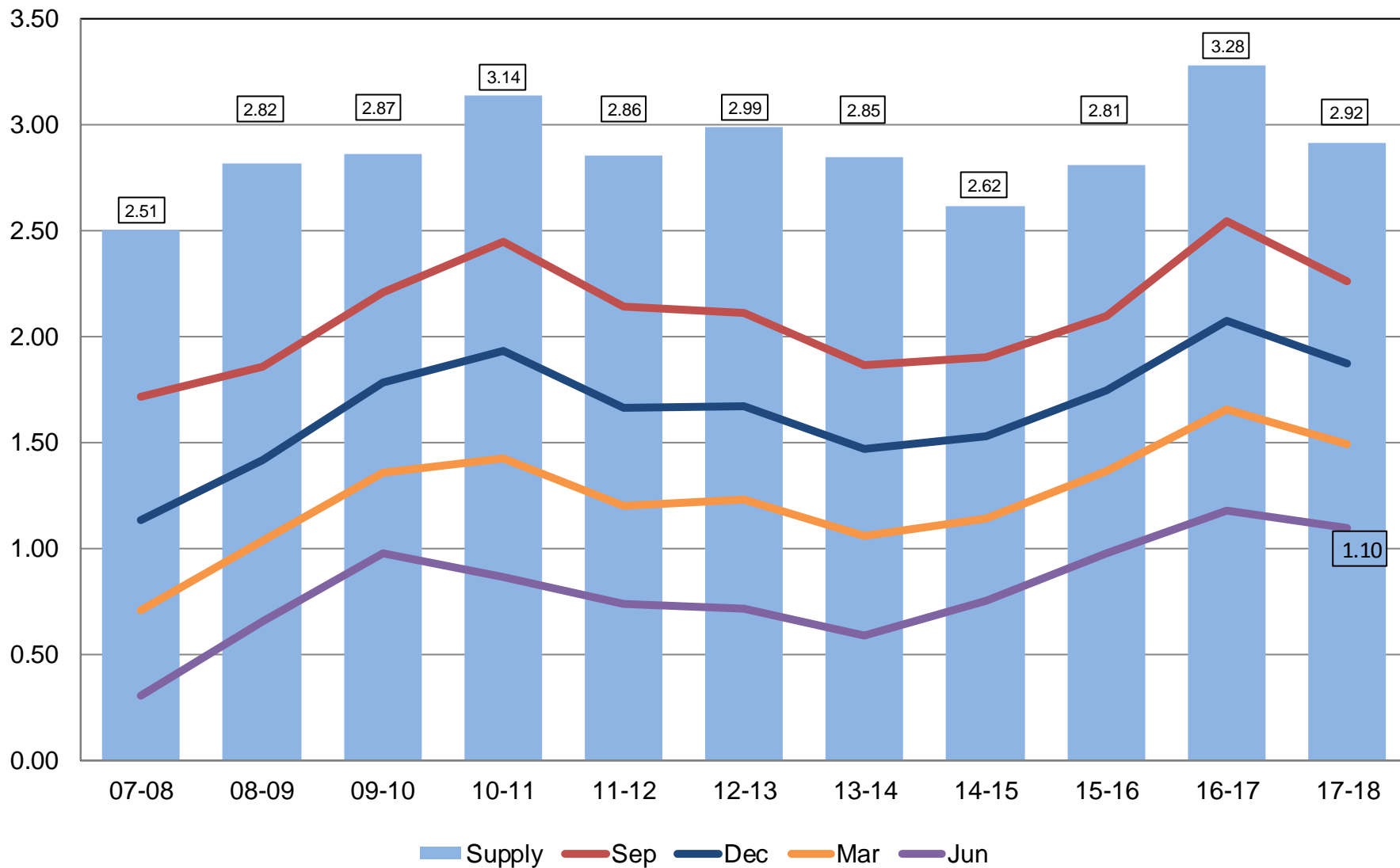
# 2018 United States Soybean Stocks Industry Expectations vs NASS



■ NASS Forecast    ● Individual Industry Expectation

# All Wheat Stocks United States

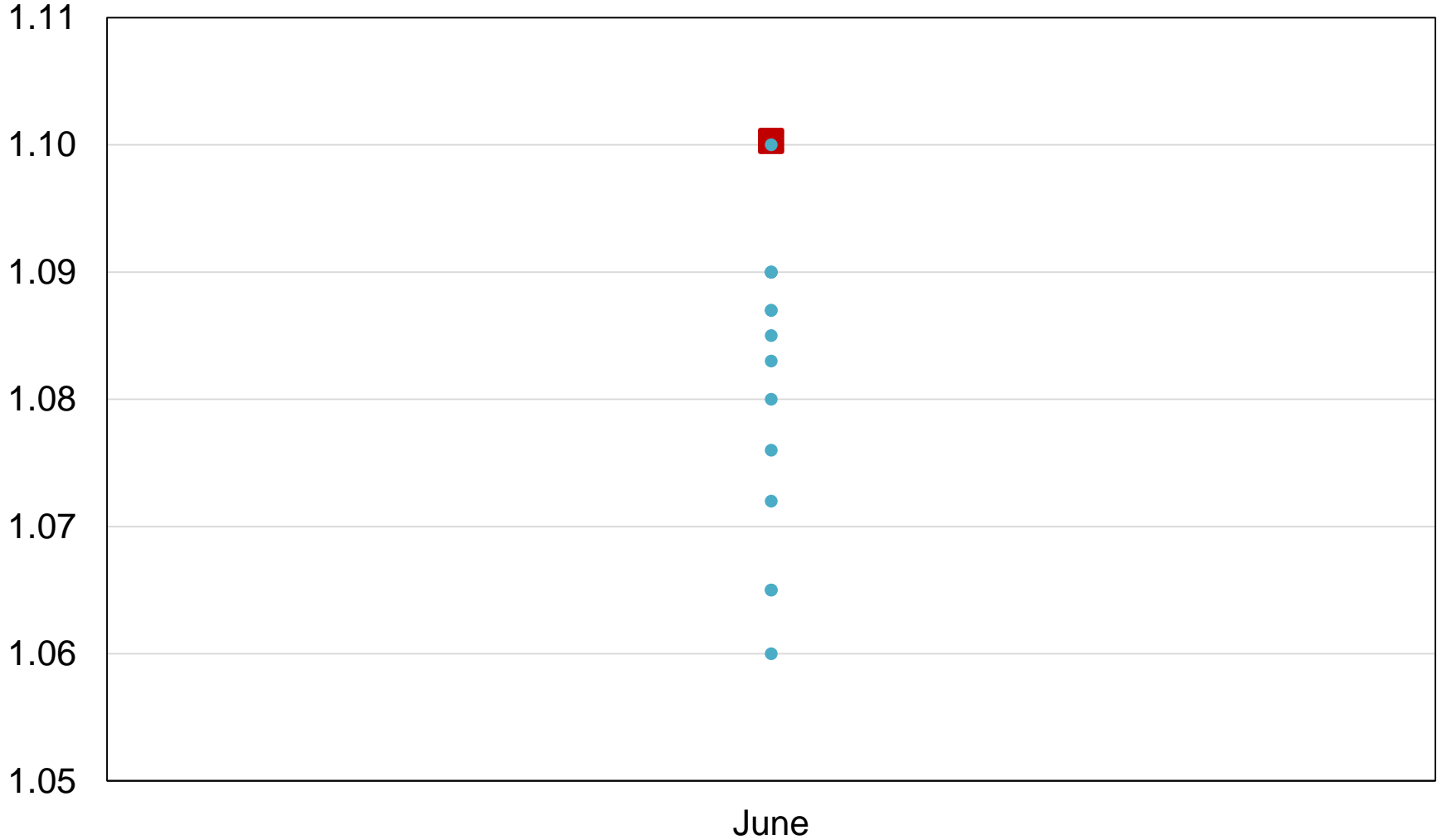
Billion Bushels





# 2018 United States All Wheat Stocks Industry Expectations vs NASS

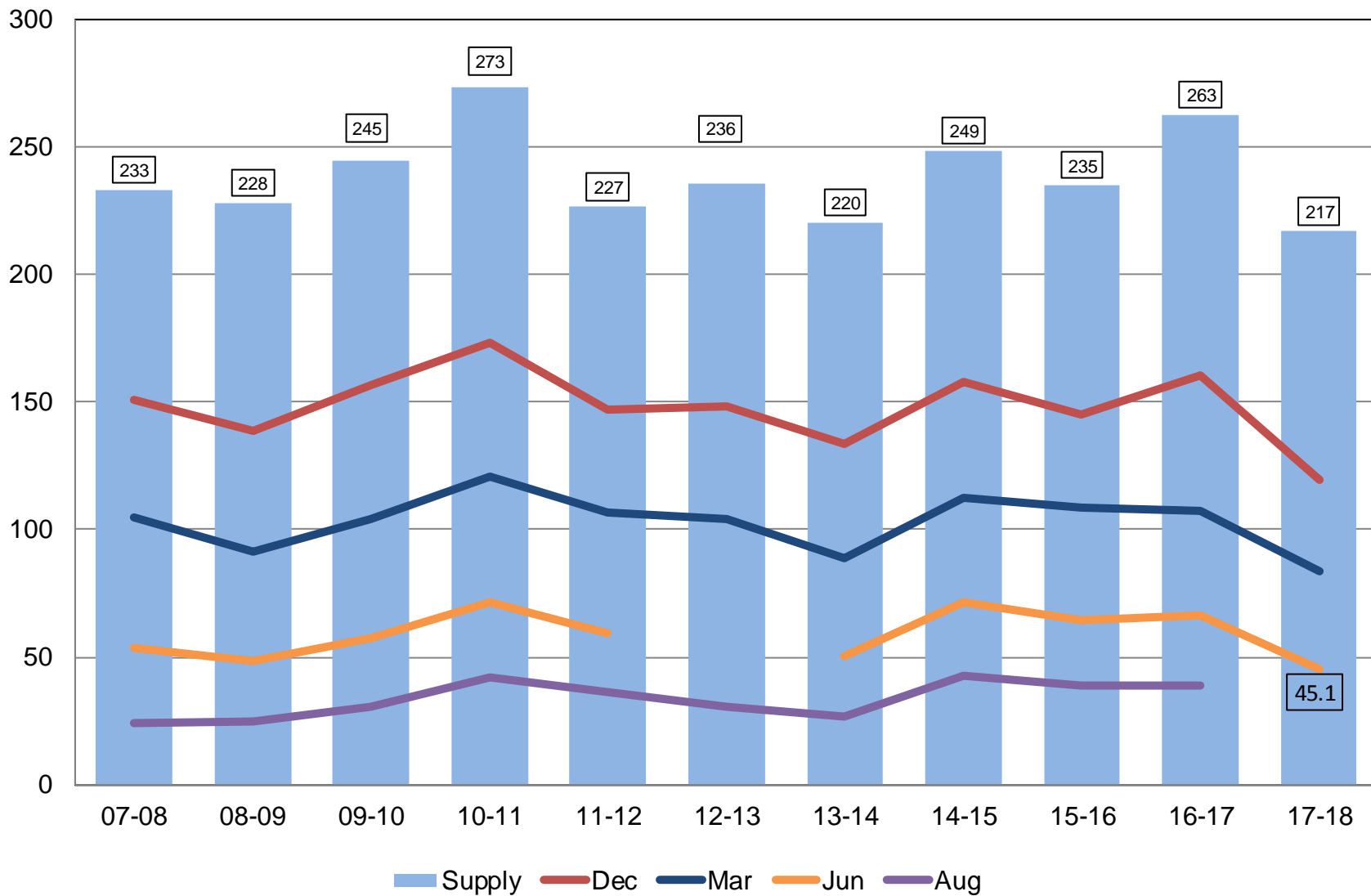
Billion Bushels



■ NASS Forecast    ● Individual Industry Expectation

# Rough Rice Stocks United States

Million Hundredweight





# Upcoming Reports

Release Date	Report Title
July 2	CAIR: Cotton System, Fats & Oils, Grain Crushings
July 12	Crop Production
July 20	Cattle and Cattle on Feed
July 30	Agricultural Prices



# 2017 CENSUS OF AGRICULTURE

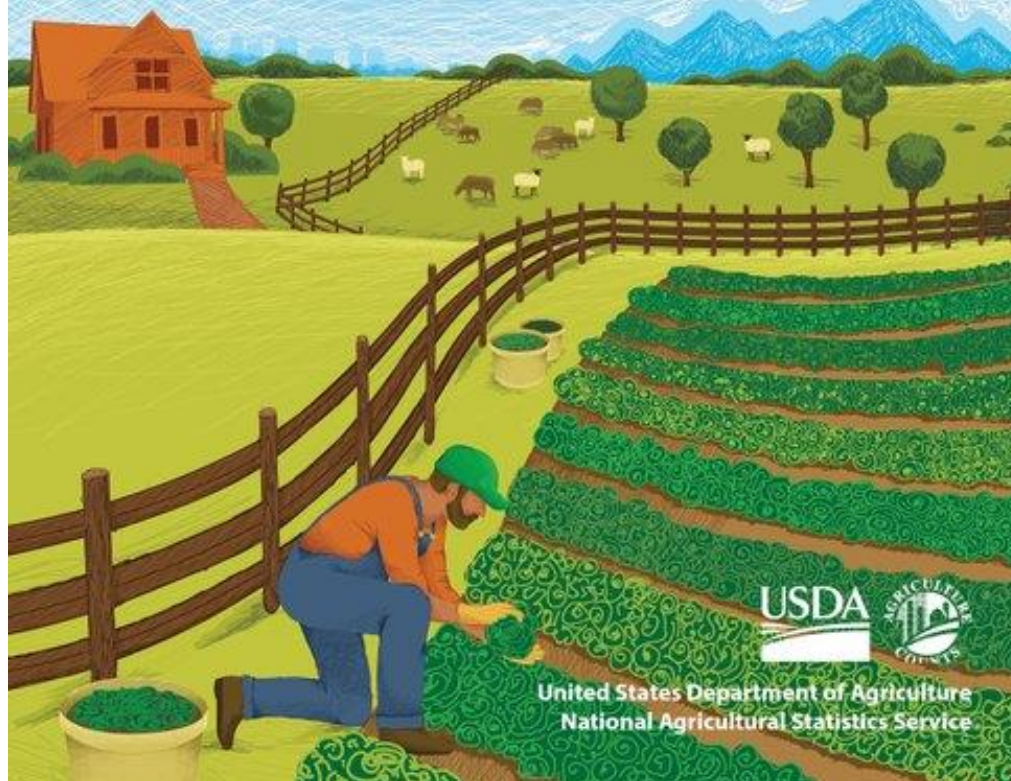
YOUR VOICE. YOUR FUTURE. YOUR OPPORTUNITY.

**There's Still Time to Be Counted.**

*Every response matters. Respond today.*

**For assistance, call toll-free (888) 424-7828.**

***[www.agcensus.usda.gov](http://www.agcensus.usda.gov)***



United States Department of Agriculture  
National Agricultural Statistics Service

USDA-NASS  
6-29-18



# STAT CHAT SERIES

Join @usda\_nass using #StatChat to ask NASS's Lance Honig about the June 29 *Acreage & Grain Stocks* reports.

**FRIDAY,  
JUNE 29  
1PM ET**

@usda\_nass  
**#STATCHAT**





United States Department of Agriculture  
**National Agricultural Statistics Service**

---

---

**All Reports Available At**  
[www.nass.usda.gov](http://www.nass.usda.gov)

**For Questions**  
202-720-2127  
800-727-9540  
[nass@nass.usda.gov](mailto:nass@nass.usda.gov)