



United States Department of Agriculture
National Agricultural Statistics Service

June Crop Production
Executive Summary

Anthony Prillaman, Head,
Field Crops Section, Crops Branch



Contents

Field Crops	Fruit & Nuts	Specialty Crops
Winter Wheat	Citrus	Maple Syrup
	Prunes	
	Sweet Cherries	
	Tart Cherries	



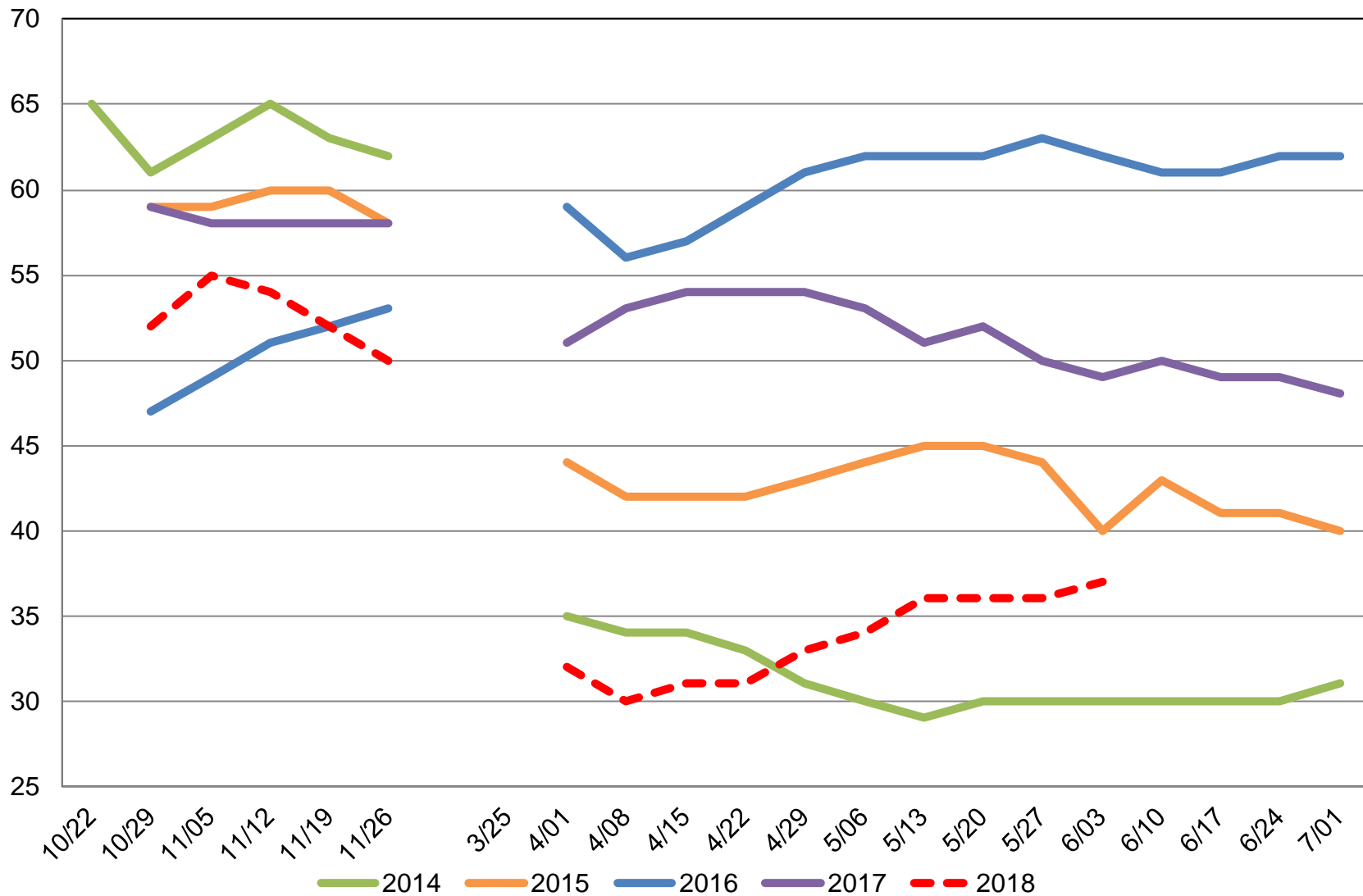
Survey Overview

	Ag Yield	Objective Yield
Survey Type	Farmer Reported	Field Measurement
Crops Included	Winter and Durum Wheat	Winter Wheat
States	26	10
Sample Size	3,886	1,090
Collection Period	May 30 - June 7	May 25 - June 1

U.S. Winter Wheat Condition

Percent Rated Good to Excellent

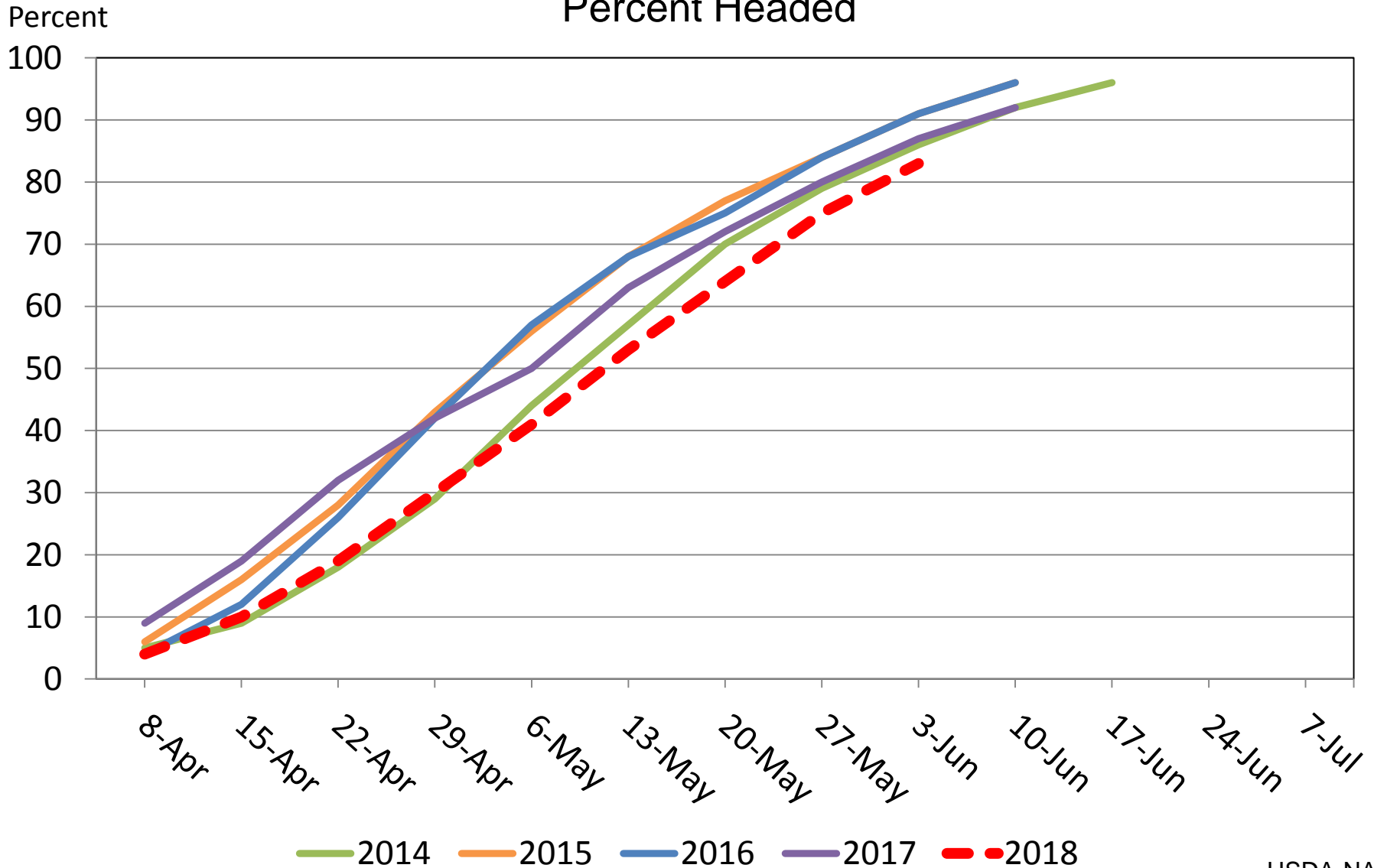
Percent





U.S. Winter Wheat Progress

Percent Headed





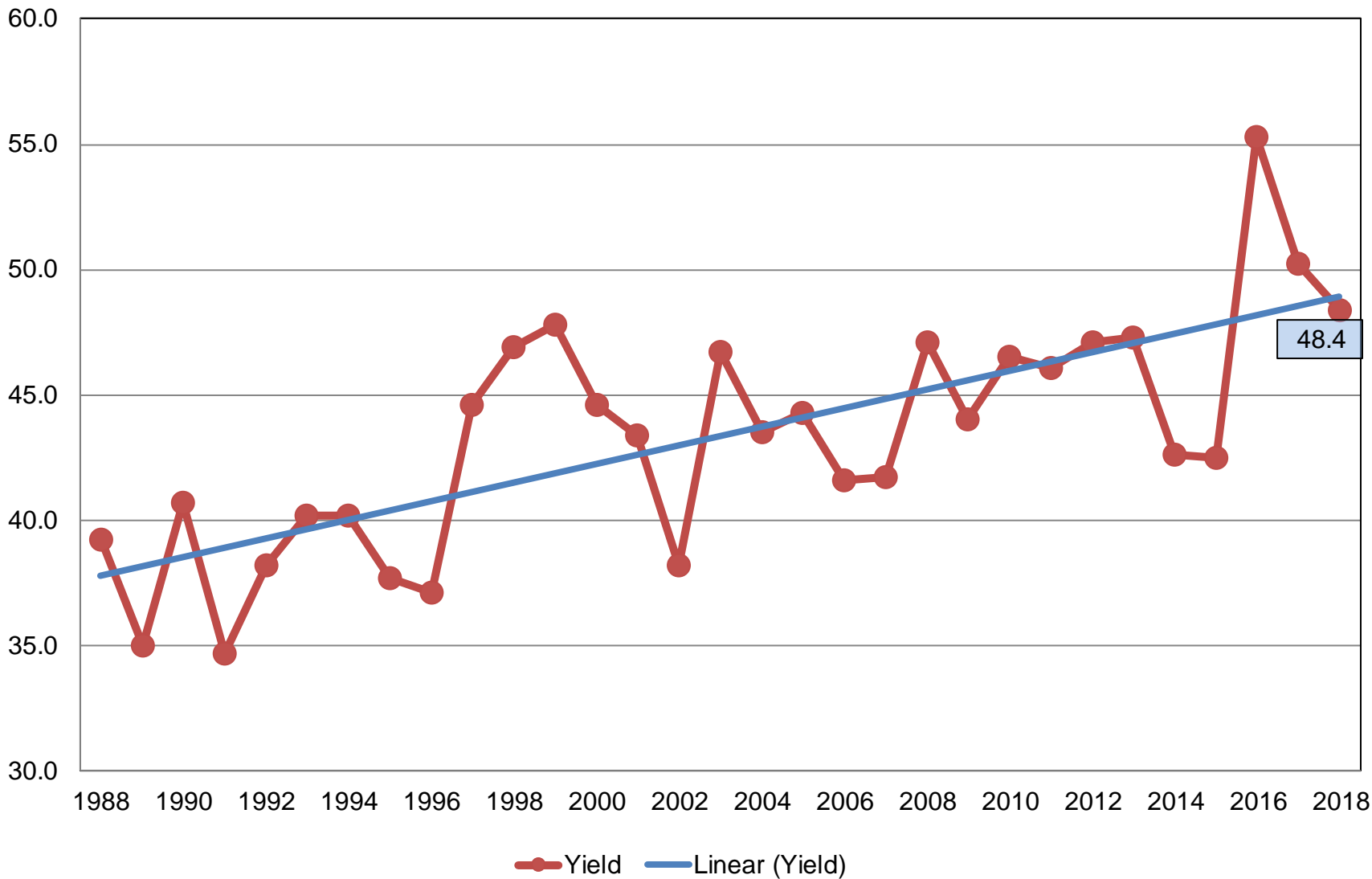
June 2018 Crop Production

Crop	Unit	June 2018	% Change From Previous Forecast	% Change From Previous Season
Wheat, Winter				
Harvested	Mil Ac	24.8	NC	-2.1
Yield	Bu/Ac	48.4	+0.6	-3.6
Production	Bil Bu	1.20	+0.5	-5.6
Production by Class				
Hard Red	Mil Bu	650	+0.5	-13.3
Soft Red	Mil Bu	316	+0.1	+8.0
White	Mil Bu	232	+1.1	+2.2



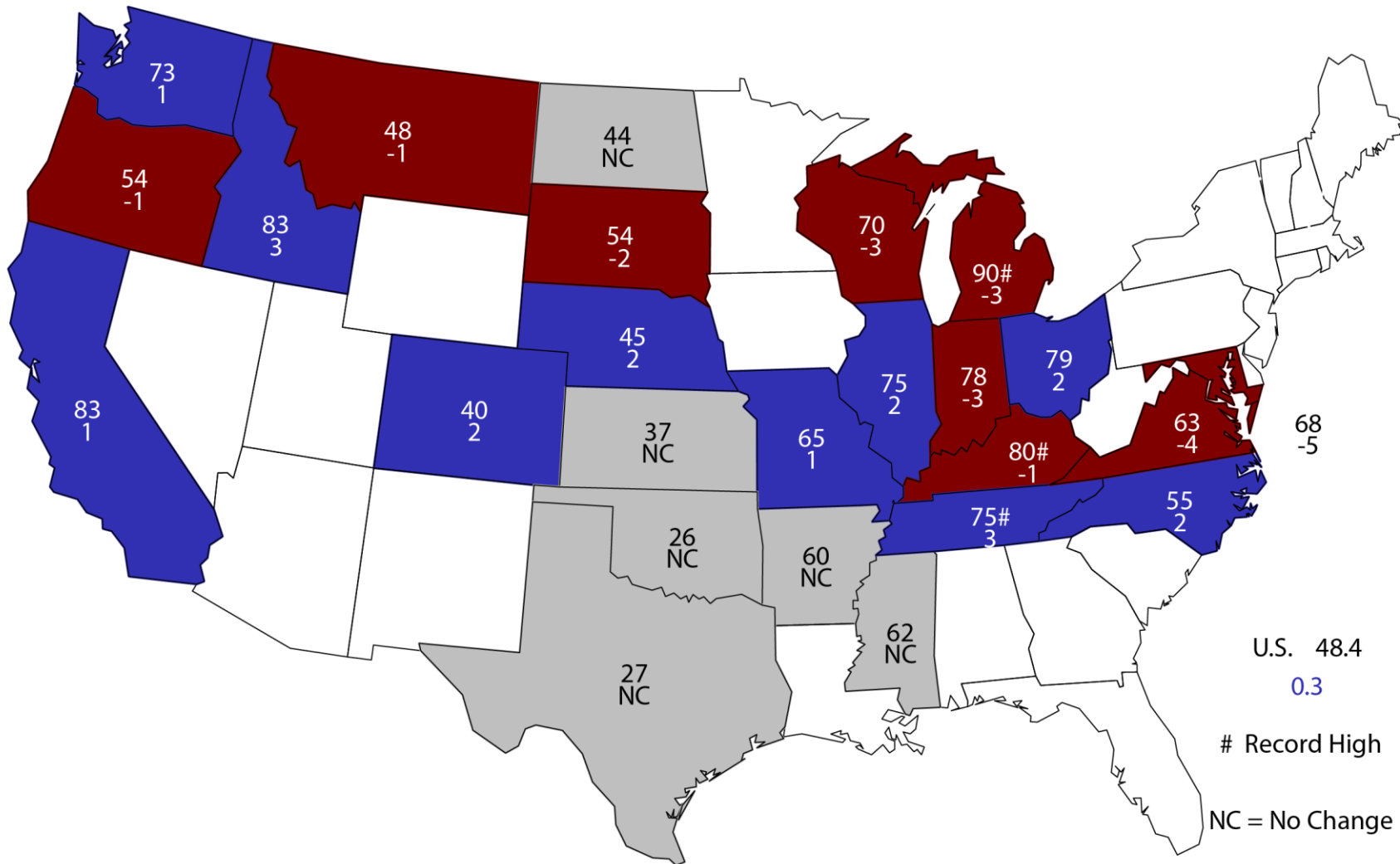
Winter Wheat Yield United States

Bushels per Acre



June 1, 2018 Winter Wheat Yield

Bushels and Change From Previous Estimate

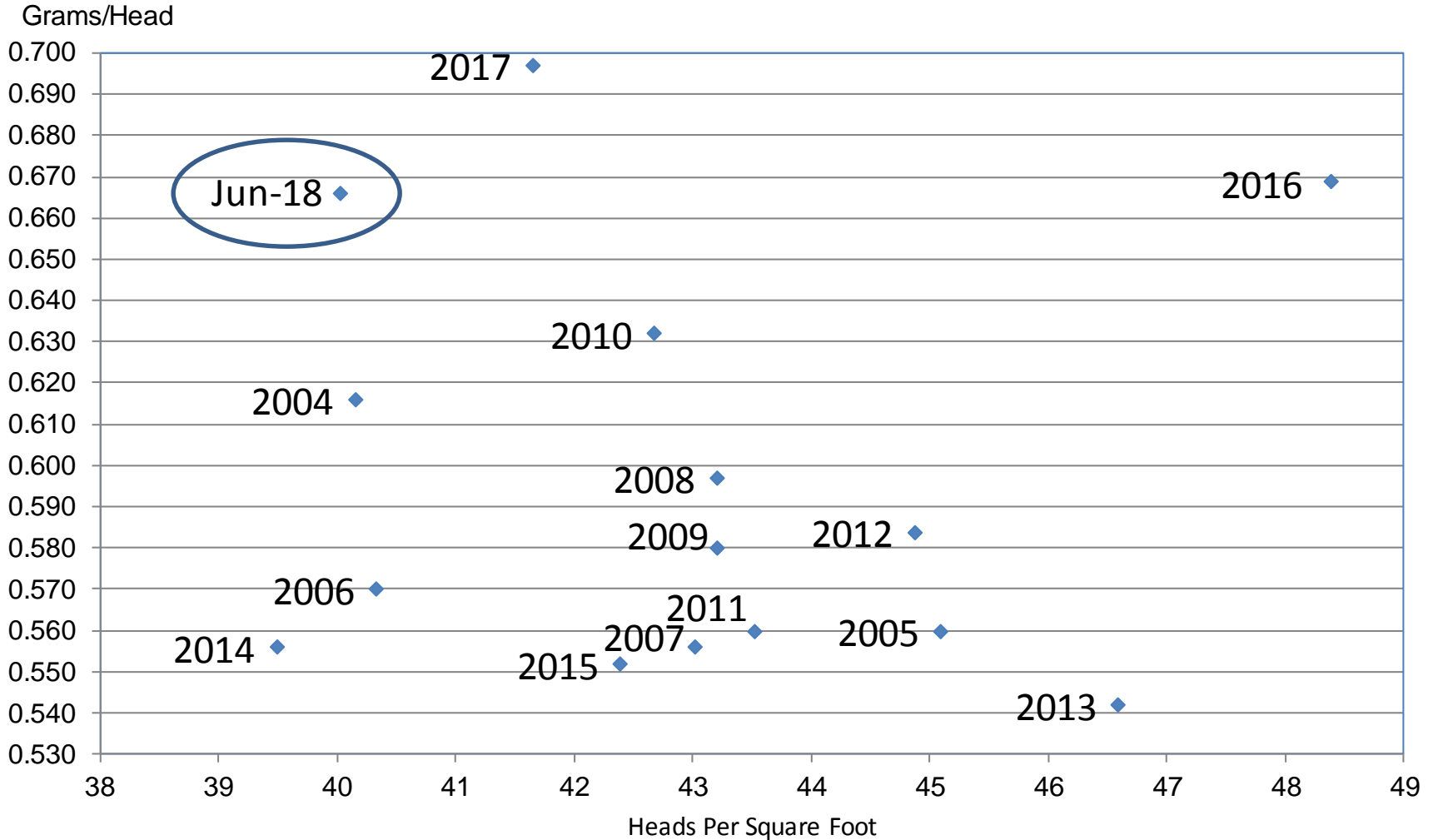


U.S. 48.4
0.3

Record High
NC = No Change

Wheat Objective Yield Region

Heads Per Square Foot vs. Implied Head Weight



$$\text{Implied Head Weight} = \text{Published Yield} / (\text{Heads} * 1.6006)$$



June 2018 Crop Production

Crop	Unit	June 2018	% Change From Previous Forecast	% Change From Previous Season
Production				
Oranges	Mil Tons	3.89	NC	-23.5
Grapefruit	Thou Tons	553	-0.5	-20.8
Tangerines & Mandarins	Thou Tons	876	NC	-15.2



June 2018 Crop Production

Crop	Unit	June 2018	% Change From Previous Forecast	% Change From Previous Season
Production				
Maple Syrup	Mil Gal	4.16	NA	-2.6
Prunes, dried	Thou Tons	80.0	NA	-23.8
Sweet Cherries	Thou Tons	320	NA	-26.1
Tart Cherries	Mil Lbs	353	NA	+48.1



Upcoming Reports

Release Date	Report Title
June 14	Potato Stocks
June 22	Cattle on Feed
June 26	Noncitrus Fruits and Nuts – Ann.
June 28	Agricultural Prices Hogs and Pigs
June 29	Acreage Grain Stocks Rice Stocks
July 2	CAIR: Cotton, Fats & Oil, and Grain Crushings
July 12	Crop Production



2017 CENSUS OF AGRICULTURE

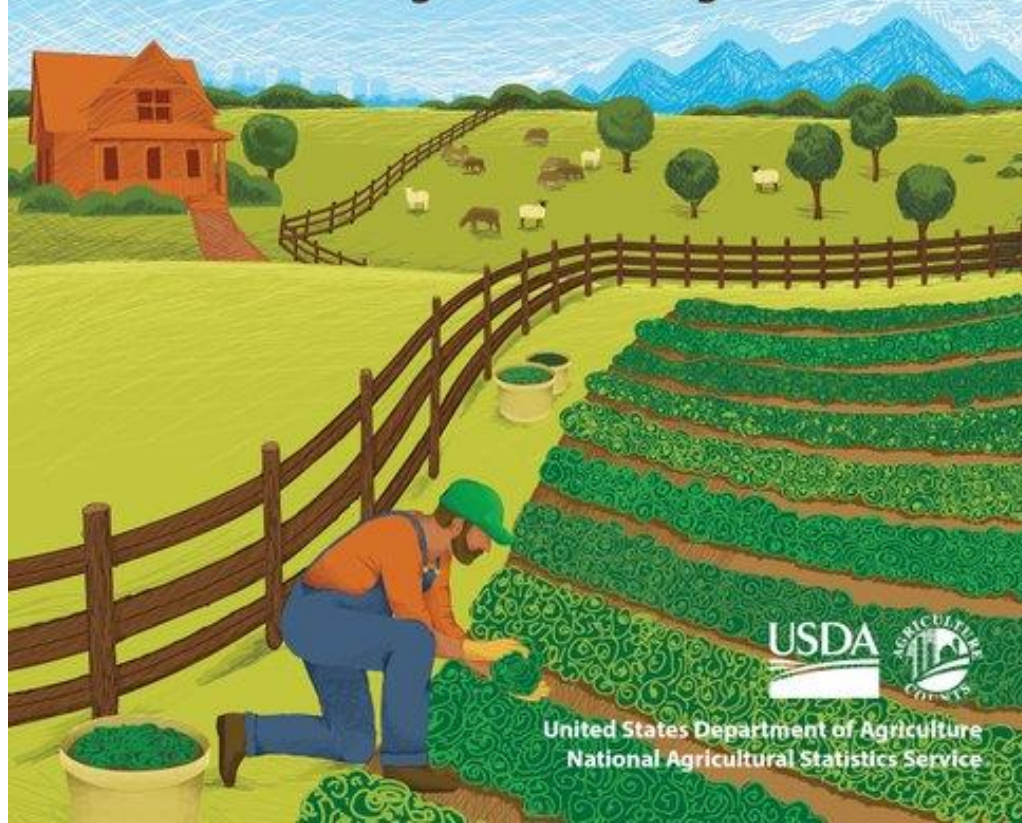
YOUR VOICE. YOUR FUTURE. YOUR OPPORTUNITY.

There's Still Time to Be Counted.

Every response matters. Respond today.

For assistance, call toll-free (888) 424-7828.

www.agcensus.usda.gov



United States Department of Agriculture
National Agricultural Statistics Service

USDA-NASS
6-12-18



United States Department of Agriculture
National Agricultural Statistics Service

All Reports Available At
www.nass.usda.gov

For Questions
202-720-2127
800-727-9540
nass@nass.usda.gov