



United States Department of Agriculture  
**National Agricultural Statistics Service**

---

---

**May Crop Production**  
Executive Summary

Lance Honig, Chief  
Crops Branch



# Contents

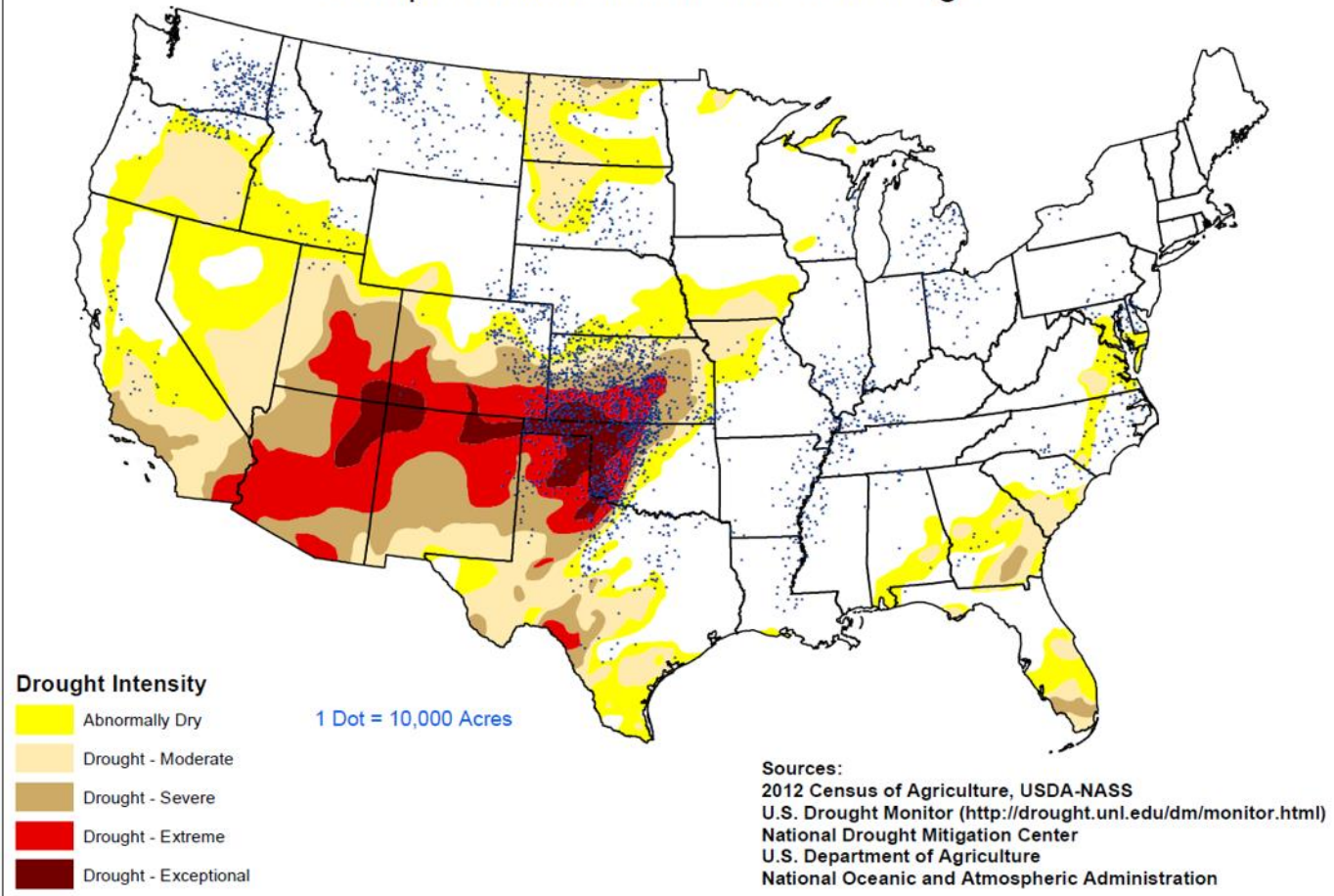
Field Crops	Fruit & Nuts
Winter Wheat	Citrus
Hay Stocks	Peaches (CA)
Cotton	Almonds (CA)
Spring Potatoes	



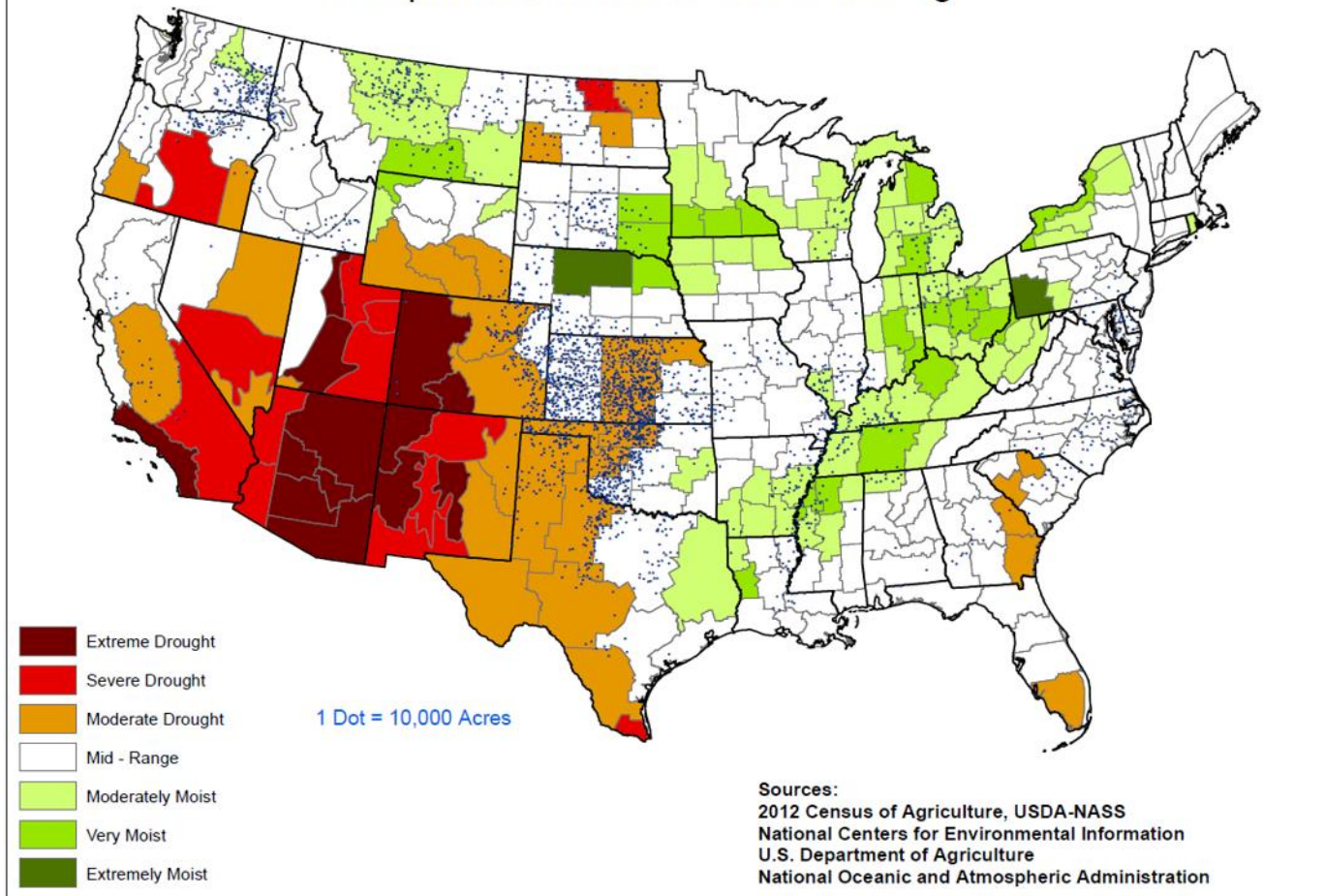
# Survey Overview

	<b>Ag Yield</b>	<b>Objective Yield</b>
Survey Type	Farmer Reported	Field Measurement
Crops Included	Winter and Durum Wheat, Hay Stocks	Winter Wheat
States	All except AK and HI	KS, OK, TX
Sample Size	11,648	355
Collection Period	Apr 28-May 7	Apr 24-May 1

## U.S. Drought Intensity for May 1, 2018 Compared with Winter Wheat Acreage



## Palmer Drought Index for April 1 through April 28, 2018 Compared with Winter Wheat Acreage





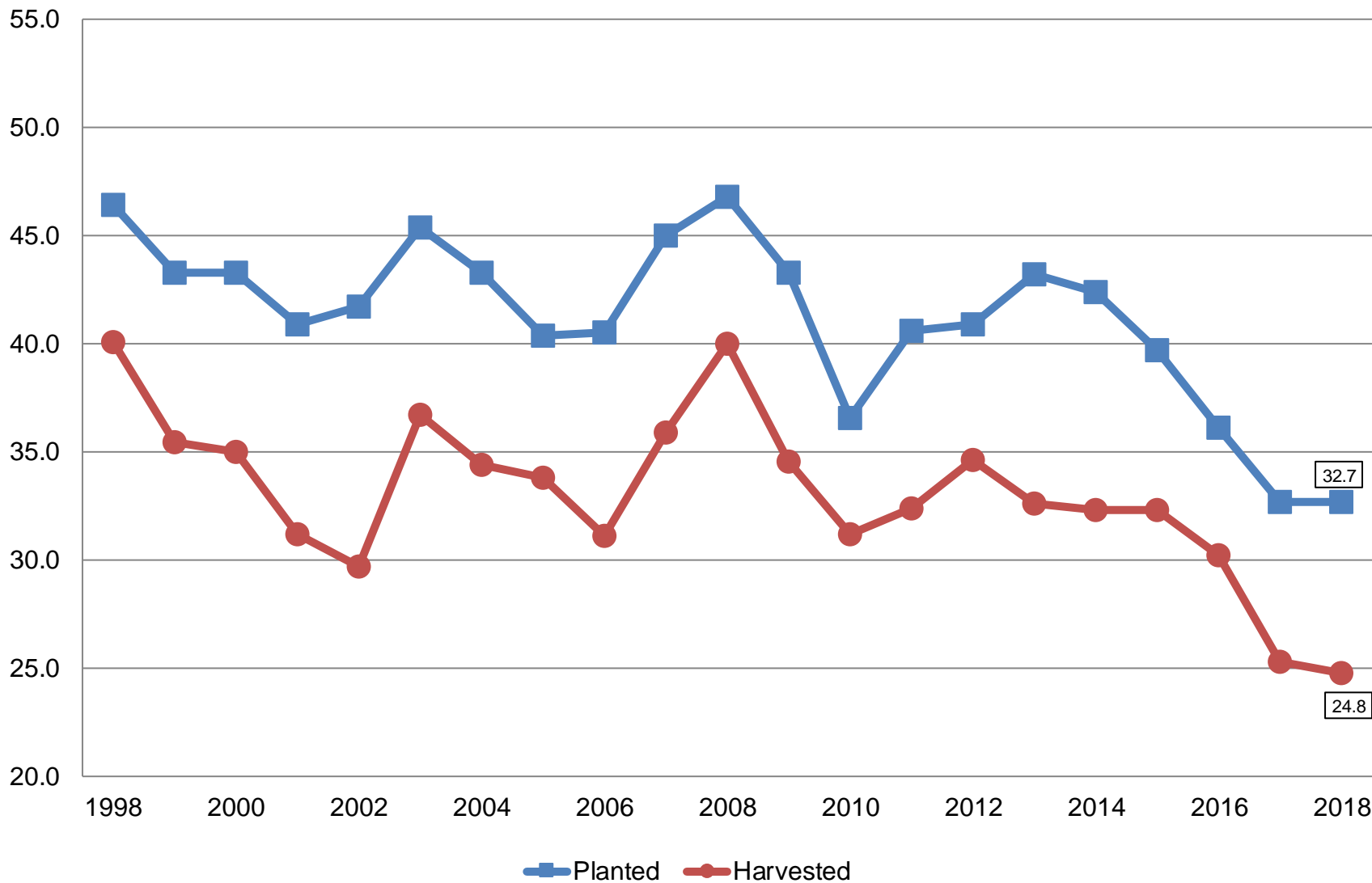
# May 2018 Crop Production

Crop	Unit	May 2018	% Change From Previous Forecast	% Change From Previous Season
Wheat, Winter				
Harvested	Mil Ac	24.8	NA	-2.1
Yield	Bu/Ac	48.1	NA	-4.2
Production	Bil Bu	1.19	NA	-6.1



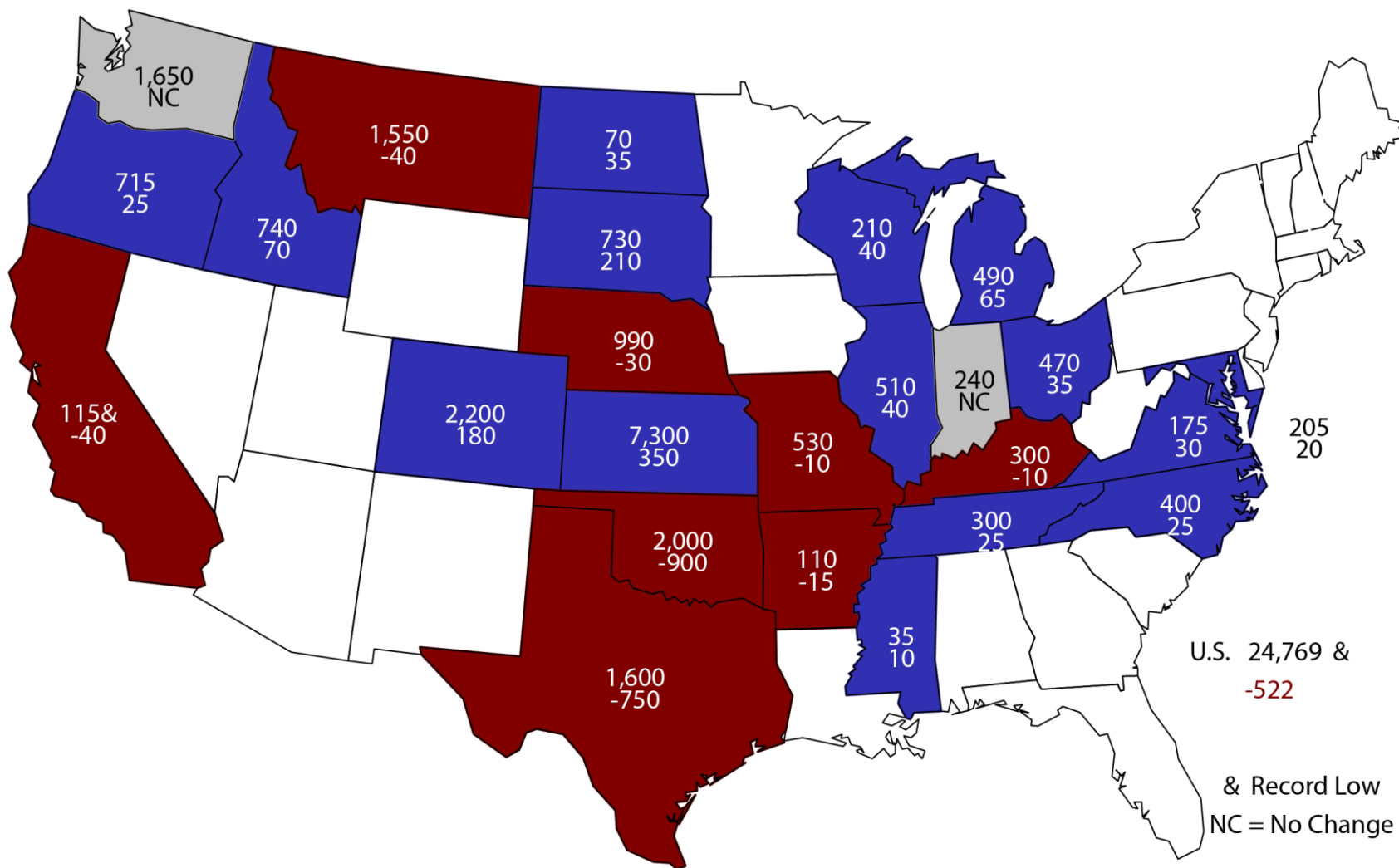
# Winter Wheat Acres United States

Million Acres



# 2018 Winter Wheat Harvested Area

(000) Acres and Change From Previous Year



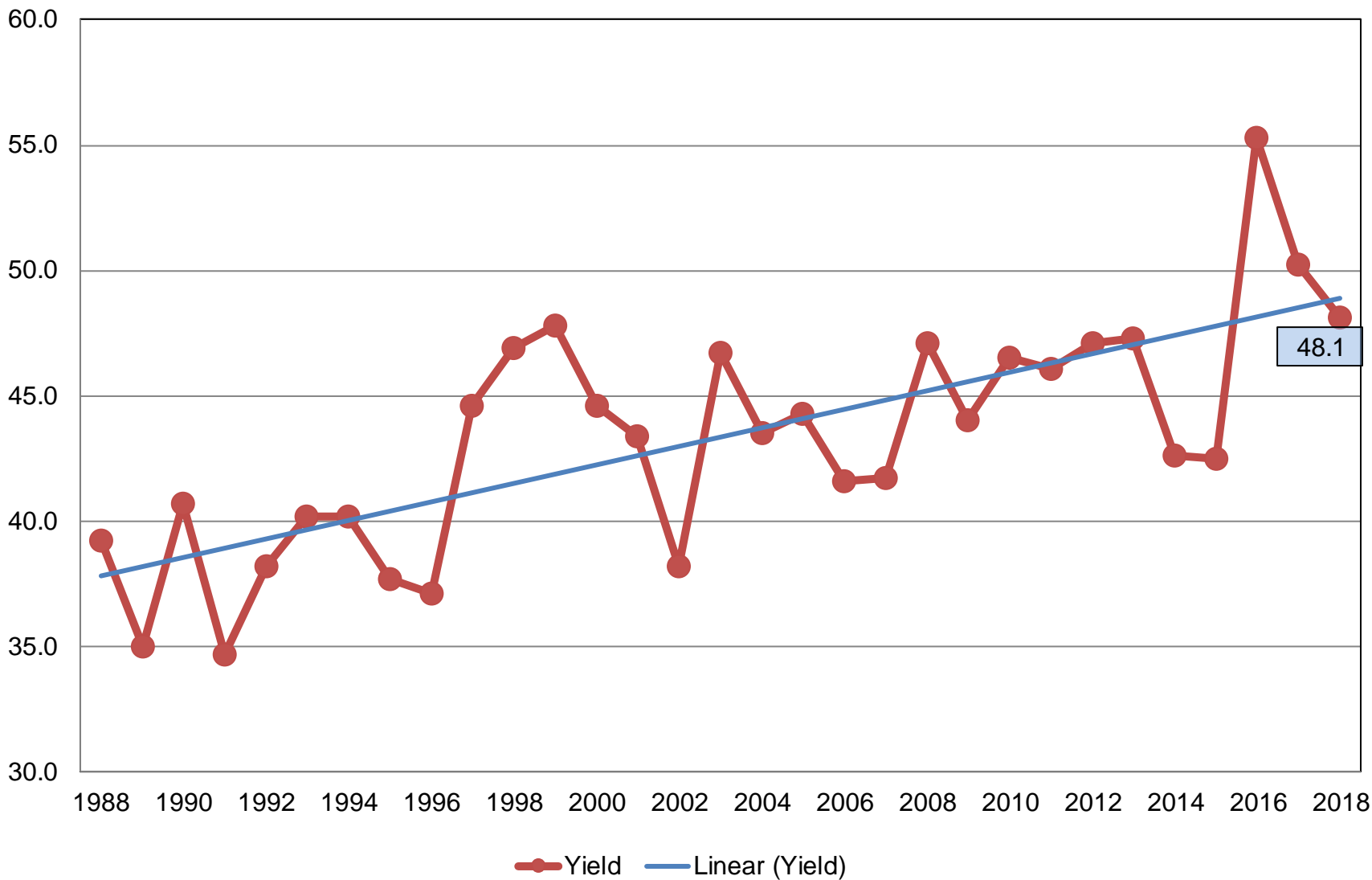
U.S. 24,769 & -522  
& Record Low  
NC = No Change





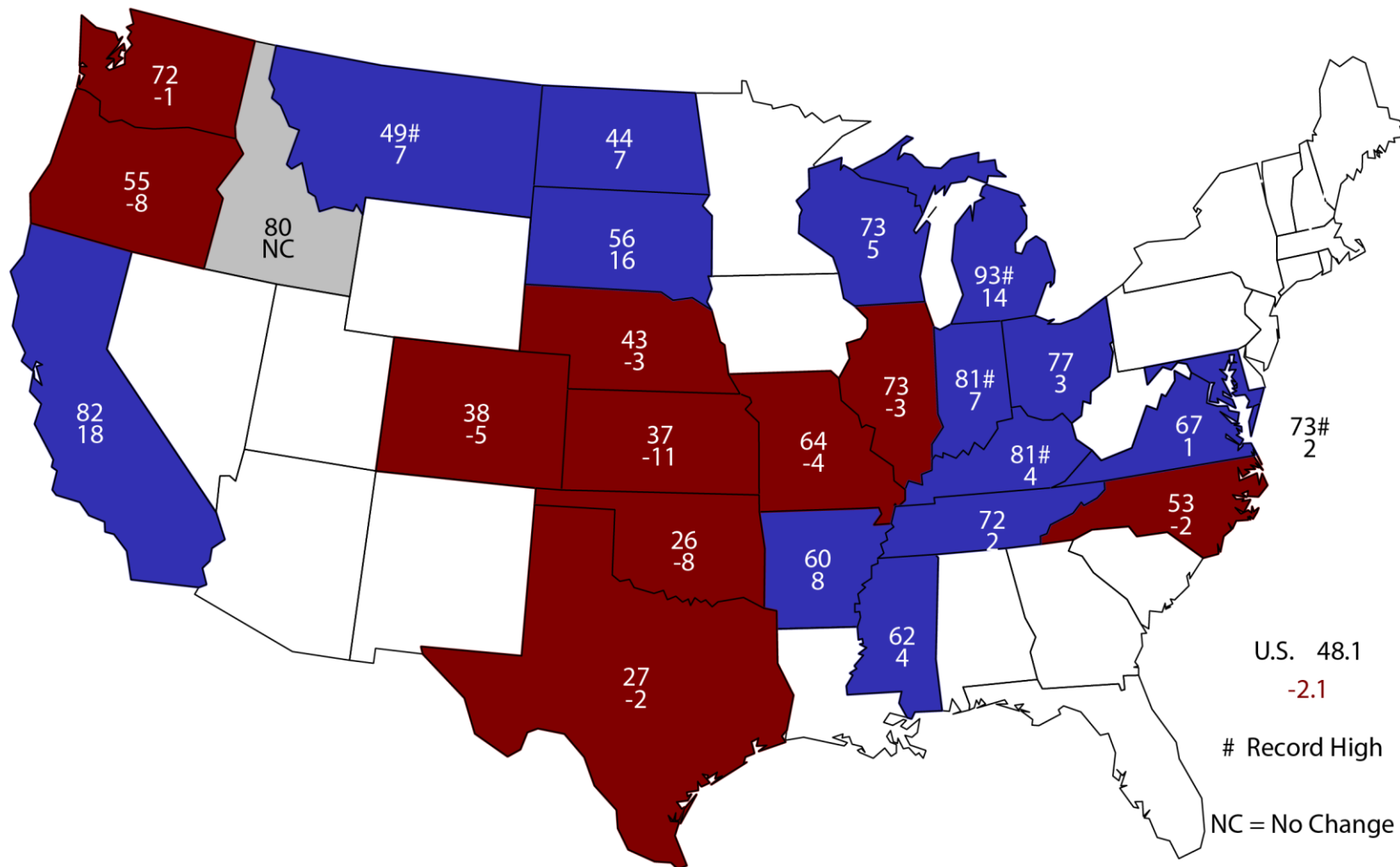
# Winter Wheat Yield United States

Bushels per Acre



# May 1, 2018 Winter Wheat Yield

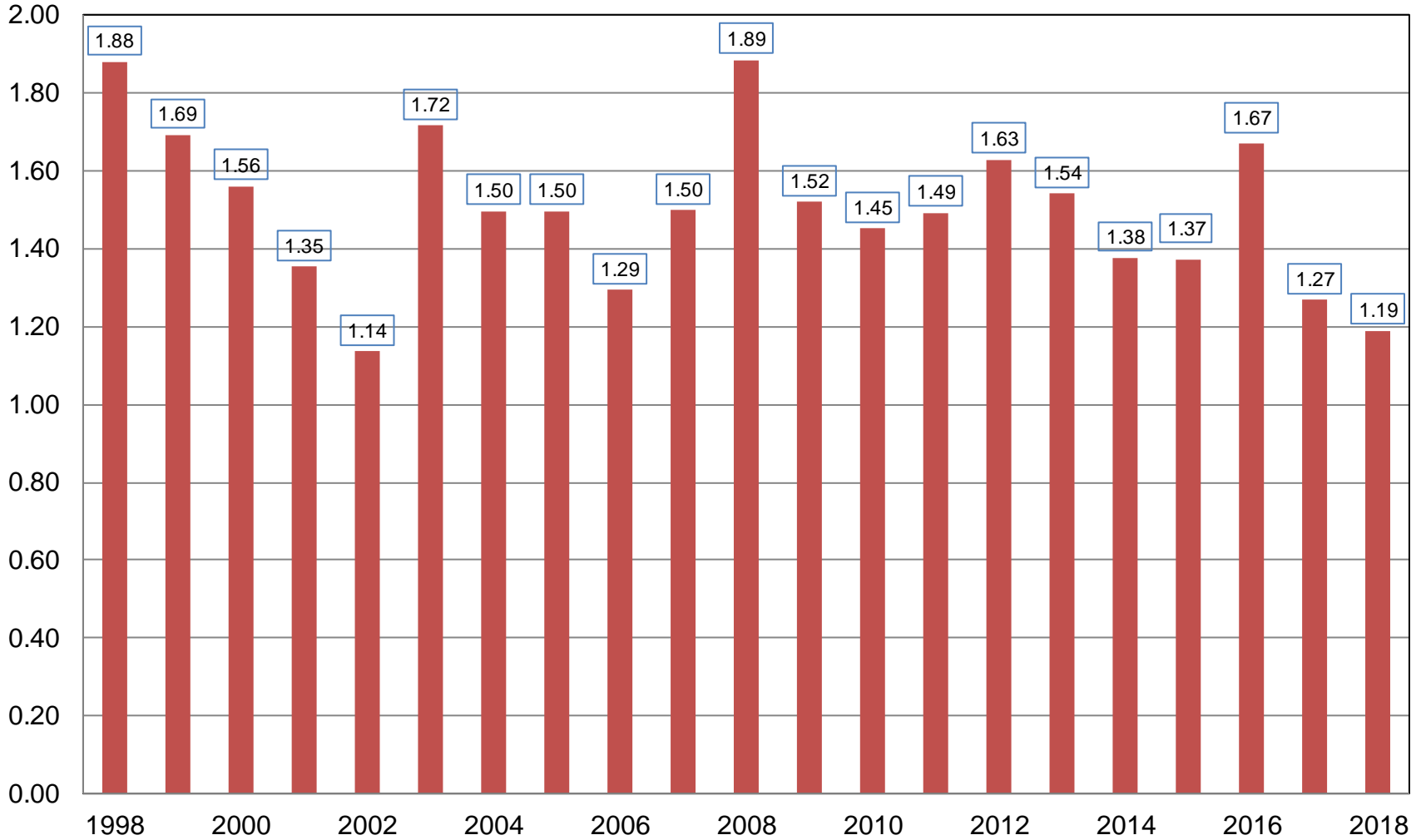
## Bushels and Change From Previous Year





# Winter Wheat Production United States

Billion Bushels



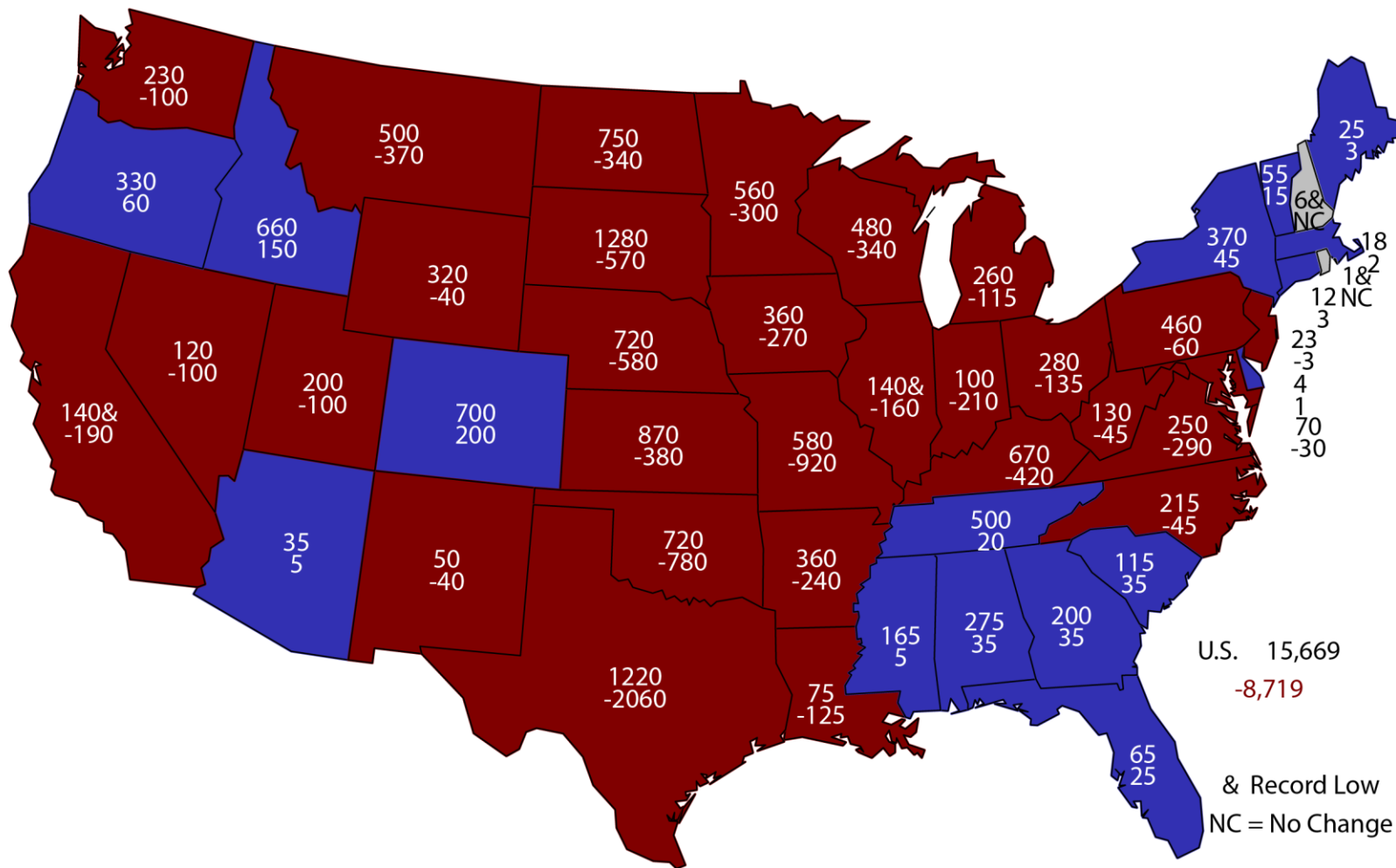


# May 2018 Crop Production

Crop	Unit	May 2018	% Change From Previous Estimate	% Change From Previous Season
All Hay				
Stocks	Mil Tons	15.7	NA	-35.8

# May 1, 2018 Hay Stocks

(000) Tons and Change From Previous Year



U.S. 15,669  
 -8,719  
 & Record Low  
 NC = No Change



# May 2018 Crop Production

Crop	Unit	May 2018	% Change From Previous Forecast	% Change From Previous Season
Production				
Oranges	Mil Tons	3.89	-0.1	-23.5
Grapefruit	Thou Tons	556	-0.4	-20.3
Tangerines & Mandarins	Thou Tons	876	-0.1	-15.2



# May 2018 Crop Production

Crop	Unit	May 2018	% Change From Previous Forecast	% Change From Previous Season
Production				
Spring Potatoes	Mil Cwt	17.6	NA	-11.3
Almonds (CA)	Bil Lbs	2.30	NA	+1.3
Peaches (CA)	Thou Tons	495	NA	-14.7



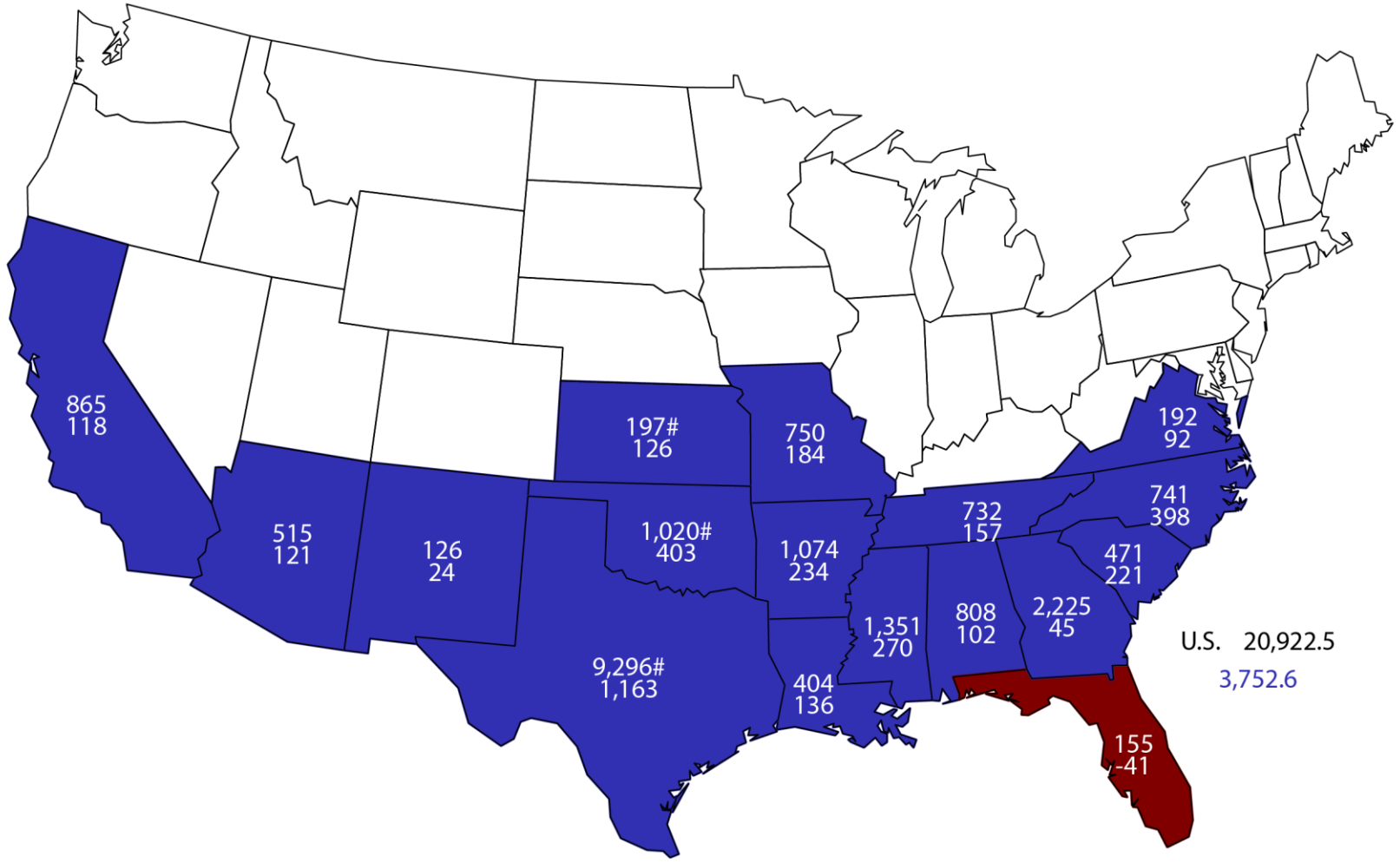
# May 2018 Crop Production

Crop	Unit	Final 2017	% Change From Previous Estimate	% Change From Previous Season
All Cotton				
Planted	Mil Ac	12.6	+<0.1	+25.2
Harvested	Mil Ac	11.1	-2.2	+16.8
Yield	Lb/Ac	905	+0.7	+4.4
Production	Mil Bls	20.9	-1.6	+21.9
Cottonseed				
Production	Mil Tons	6.42	-4.5	+19.6



# 2017 All Cotton Production

## Bales (000) and Change From Previous Year





# Upcoming Reports

Release Date	Report Title
May 10	Cotton County Estimates
May 25	Cattle on Feed
May 30	Agricultural Prices
June 1	CAIR: Cotton, Fats & Oil, and Grain Crushings
June 12	Crop Production
June 28	Hogs and Pigs
June 29	Acreage Grain Stocks Rice Stocks



# 2017 CENSUS OF AGRICULTURE

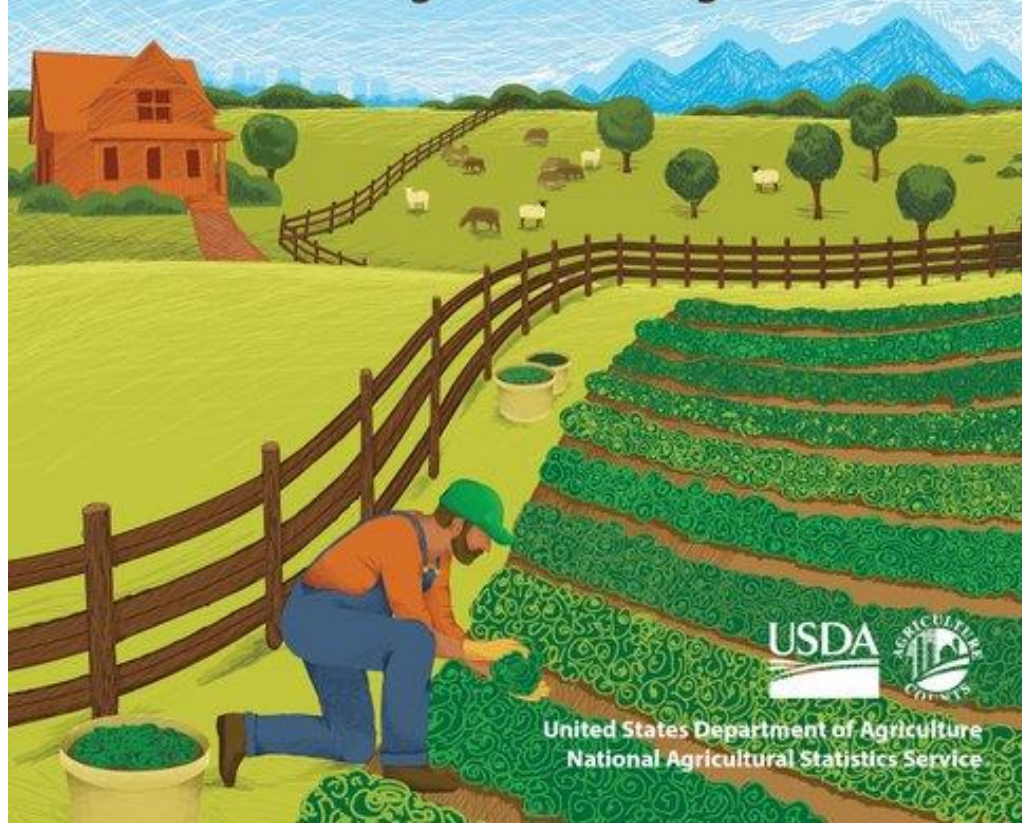
YOUR VOICE. YOUR FUTURE. YOUR OPPORTUNITY.

## There's Still Time to Be Counted.

*Every response matters. Respond today.*

**For assistance, call toll-free (888) 424-7828.**

**[www.agcensus.usda.gov](http://www.agcensus.usda.gov)**



United States Department of Agriculture  
National Agricultural Statistics Service

USDA-NASS  
5-10-18

# STAT CHAT SERIES

Join @usda\_nass and Lance Honig using #StatChat to ask about crop production and the winter wheat forecast.

@usda\_nass  
**#STATCHAT**



**THURS  
MAY 10  
1PM ET**





United States Department of Agriculture  
**National Agricultural Statistics Service**

---

---

**All Reports Available At**  
[www.nass.usda.gov](http://www.nass.usda.gov)

**For Questions**  
202-720-2127  
800-727-9540  
[nass@nass.usda.gov](mailto:nass@nass.usda.gov)