



United States Department of Agriculture
National Agricultural Statistics Service

Prospective Plantings
Grain Stocks
Rice Stocks

Executive Summary

Lance Honig, Chief
Crops Branch



Contents

Field Crops	Stocks
Principal Crops Planted Acres	Corn
Feed Grain Acres	Soybeans
Food Grain Acres	Sorghum
Oilseed Acres	Sunflower
Other Crop Acres	All Wheat
	Barley
	Oats
	Rice

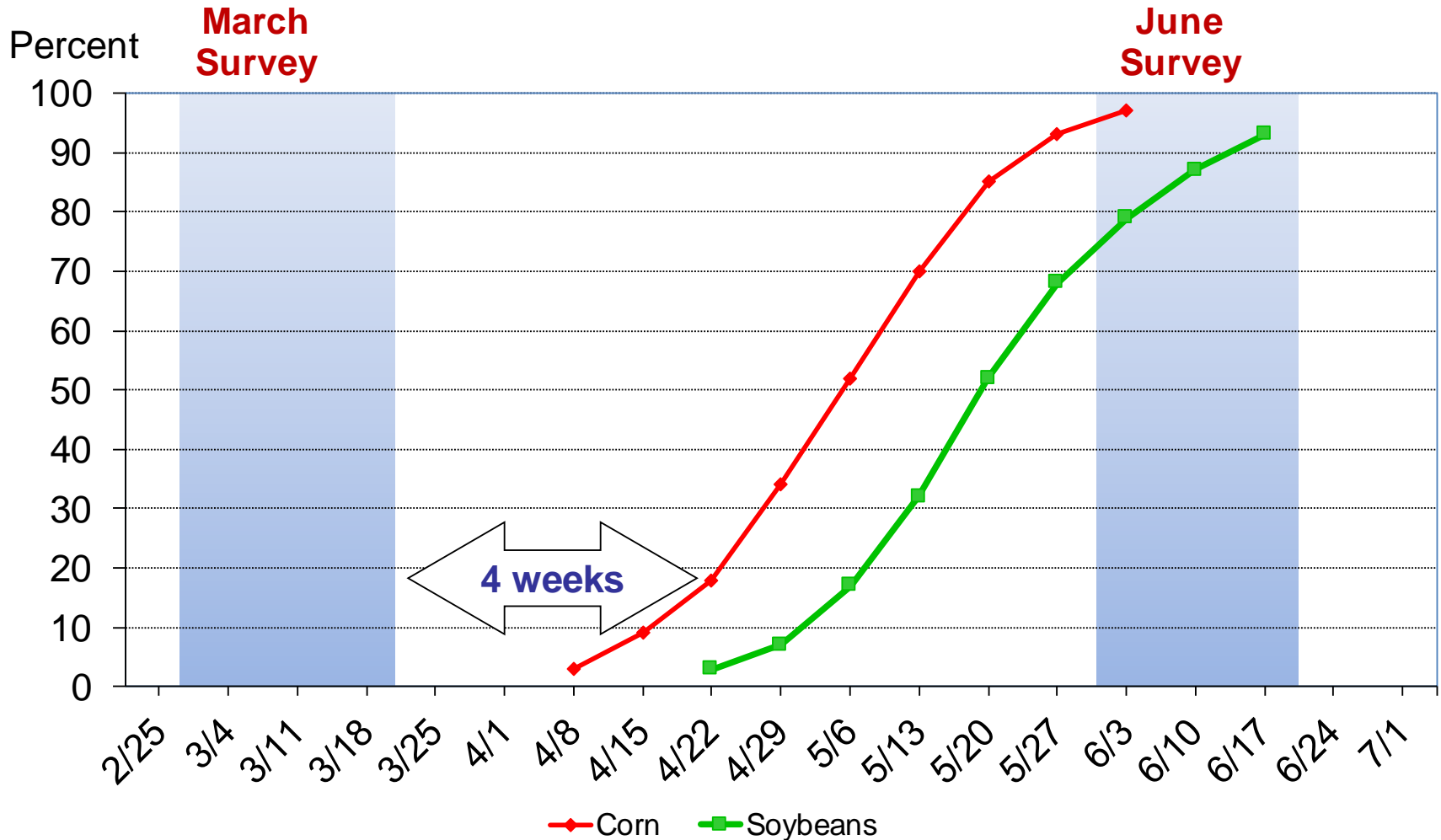


Survey Overview

	March Ag Survey	Off-Farm Grain Stock Survey
Survey Type	Farmer Reported	Reported
Collection Method	Mail, Phone, Internet, Personal Interview	Mail, Phone, Internet, Personal Interview
Crops Included	Acreage Intentions, On-Farm Stocks	Grains and Oilseed On Hand
States	All Except AK & HI	All Except AK, HI, & NV
Sample Size	82,946	~ 8,500 Facilities
Collection Period	Feb 27 – Mar 19	Feb 27 – Mar 19

Acreage Intentions vs. Actual Planted Acres

Usual Planting Progress





Principal Crops Planted Acreage

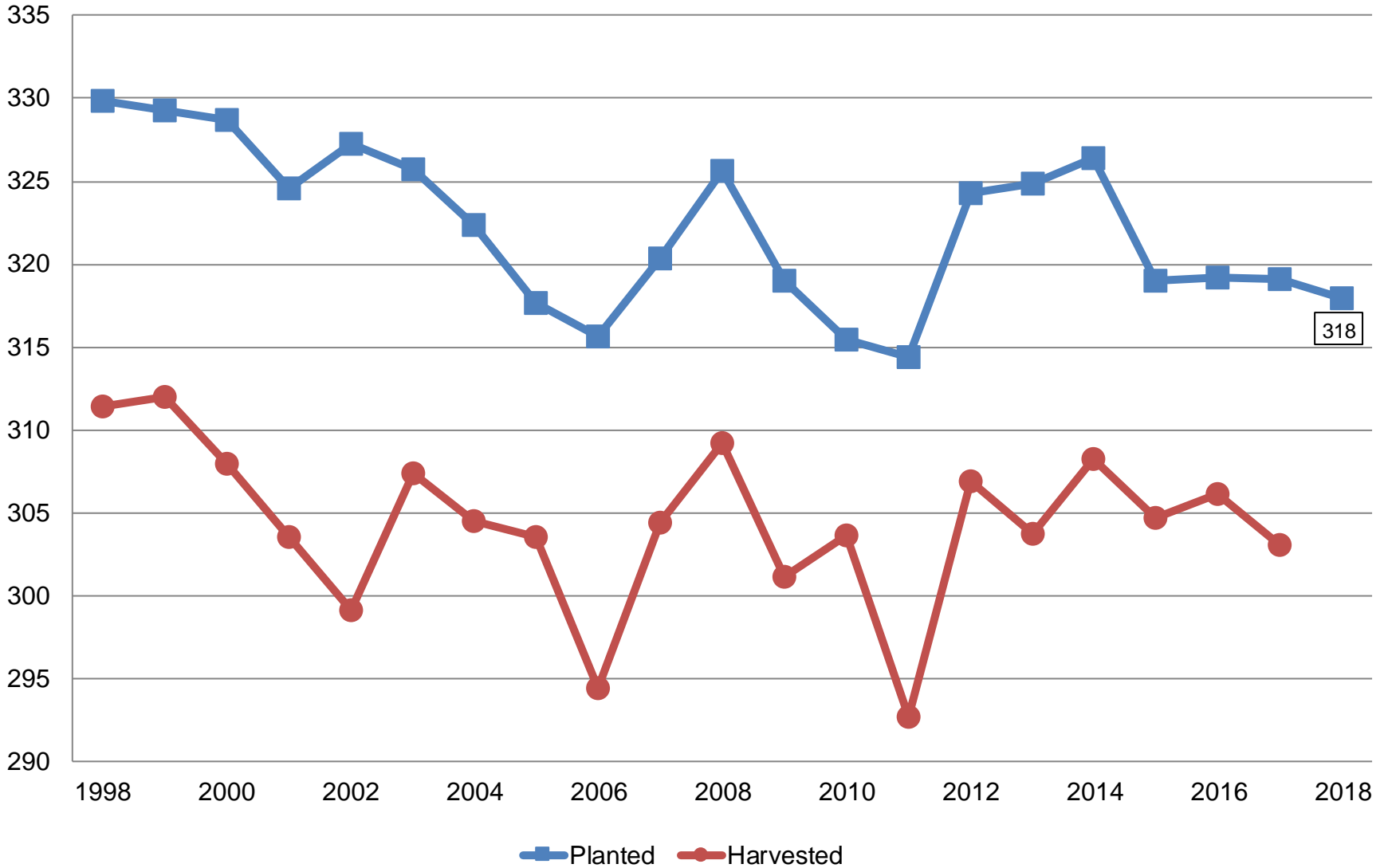
United States

Year	Principal Crops	Change From Previous Year
	<i>Million Acres</i>	
2009	319.0	-6.6
2010	315.4	-3.6
2011	314.3	-1.1
2012	324.3	+10.0
2013	324.9	+0.6
2014	326.4	+1.6
2015	319.0	-7.5
2016	319.2	+0.3
2017	319.1	-0.1
2018	318.0	-1.2



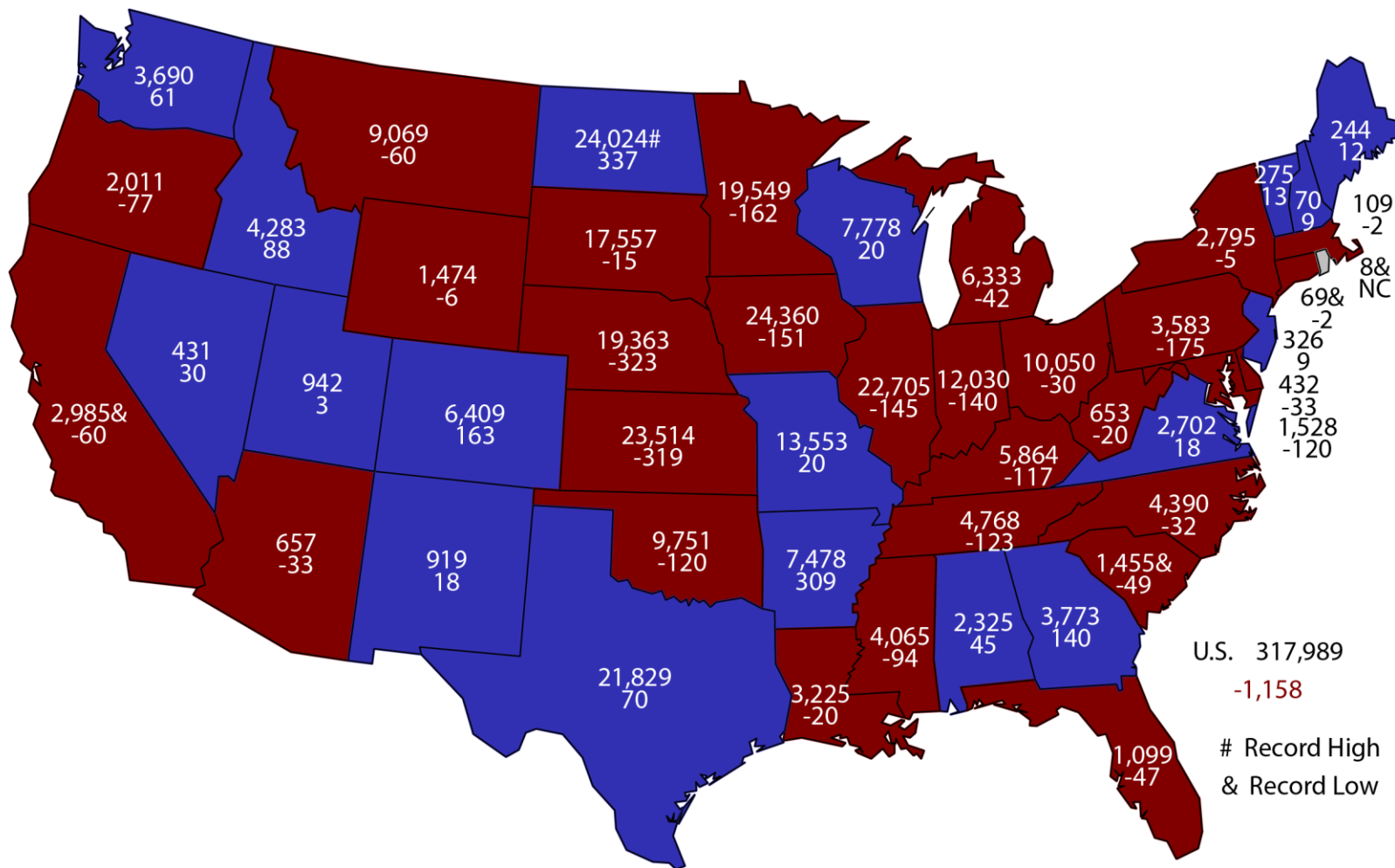
Principal Crops United States

Million Acres



2018 Principal Crops Planted Area

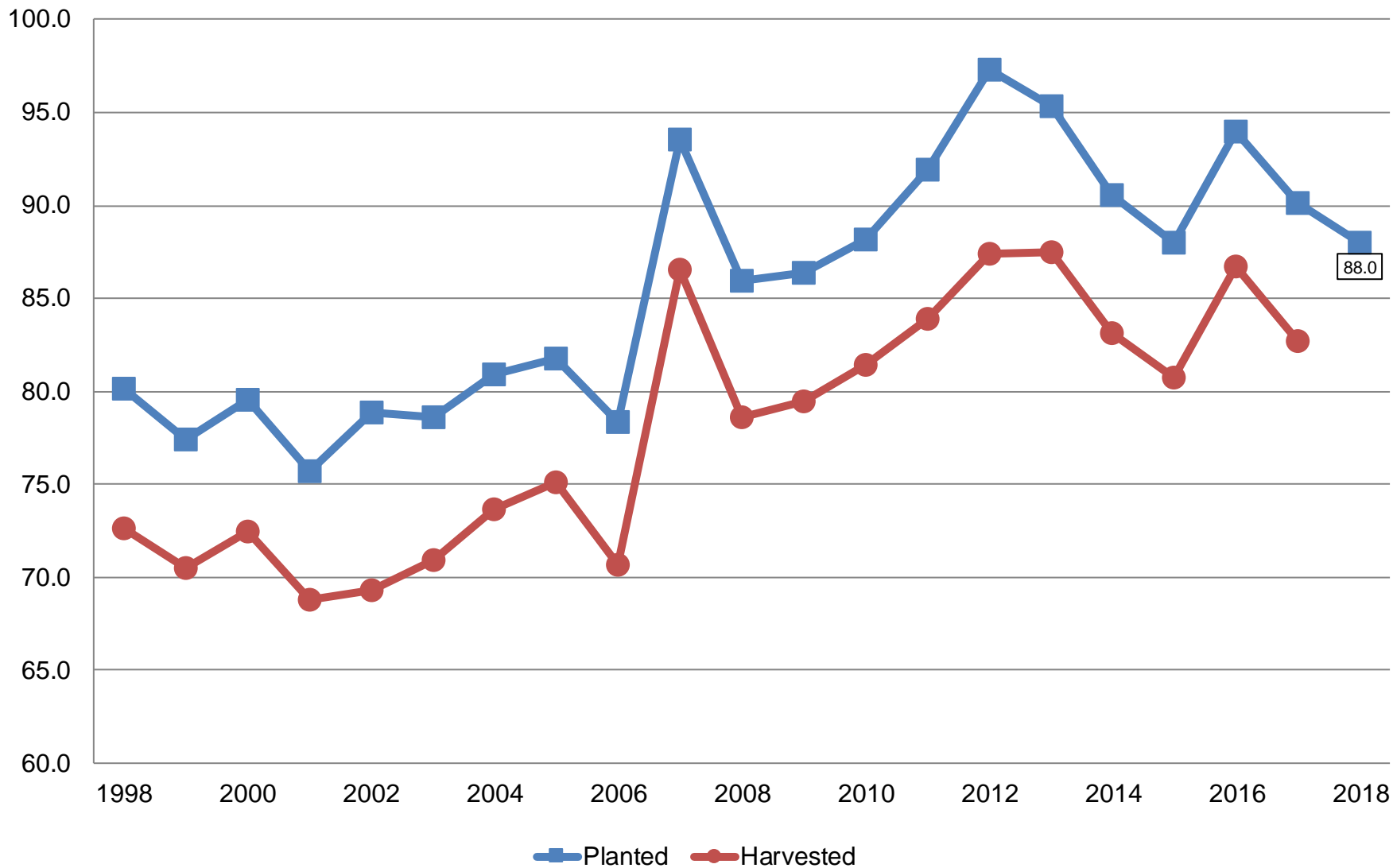
(000) Acres and Change From Previous Year



U.S. 317,989
-1,158
Record High
& Record Low

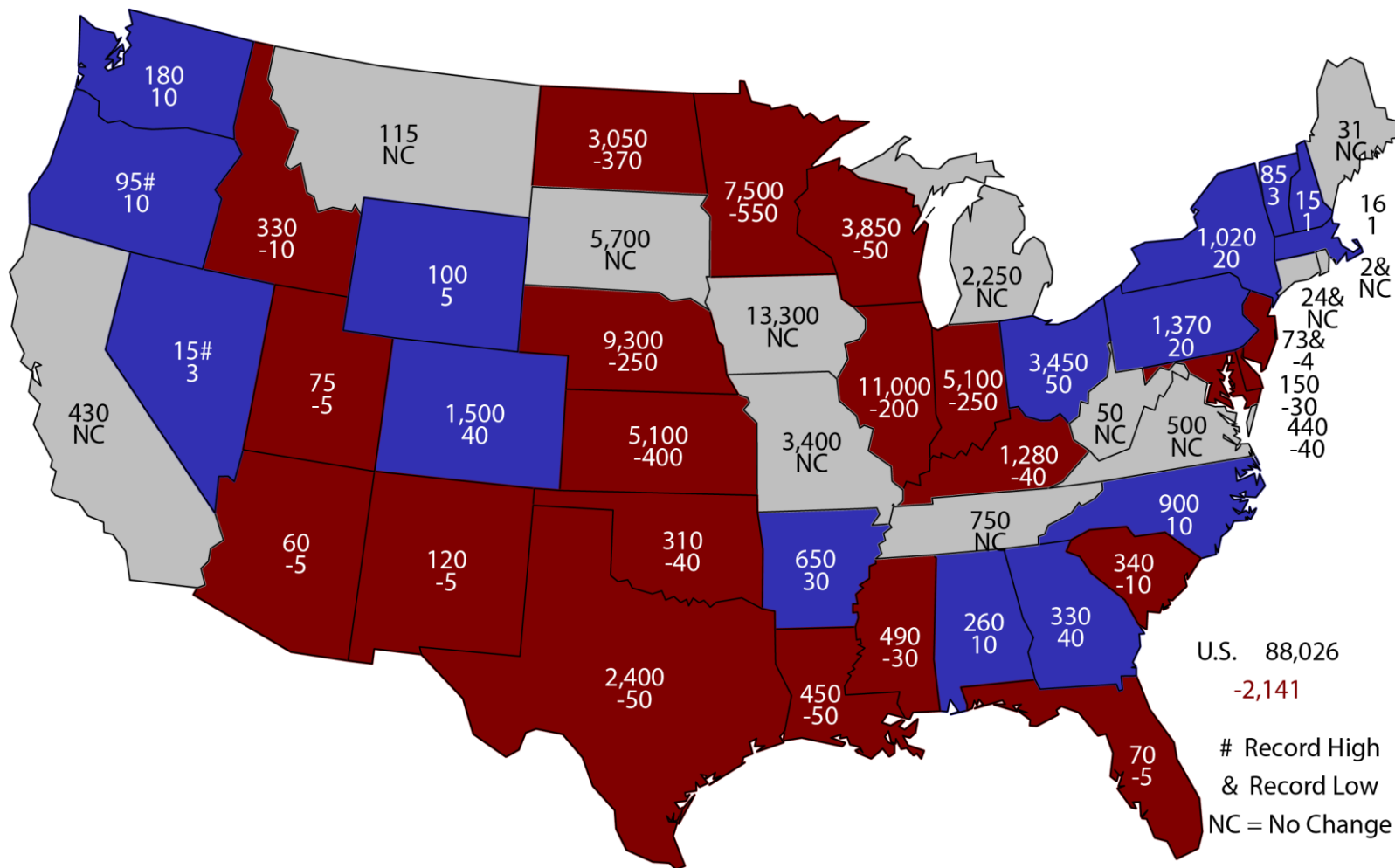
Corn Acres United States

Million Acres



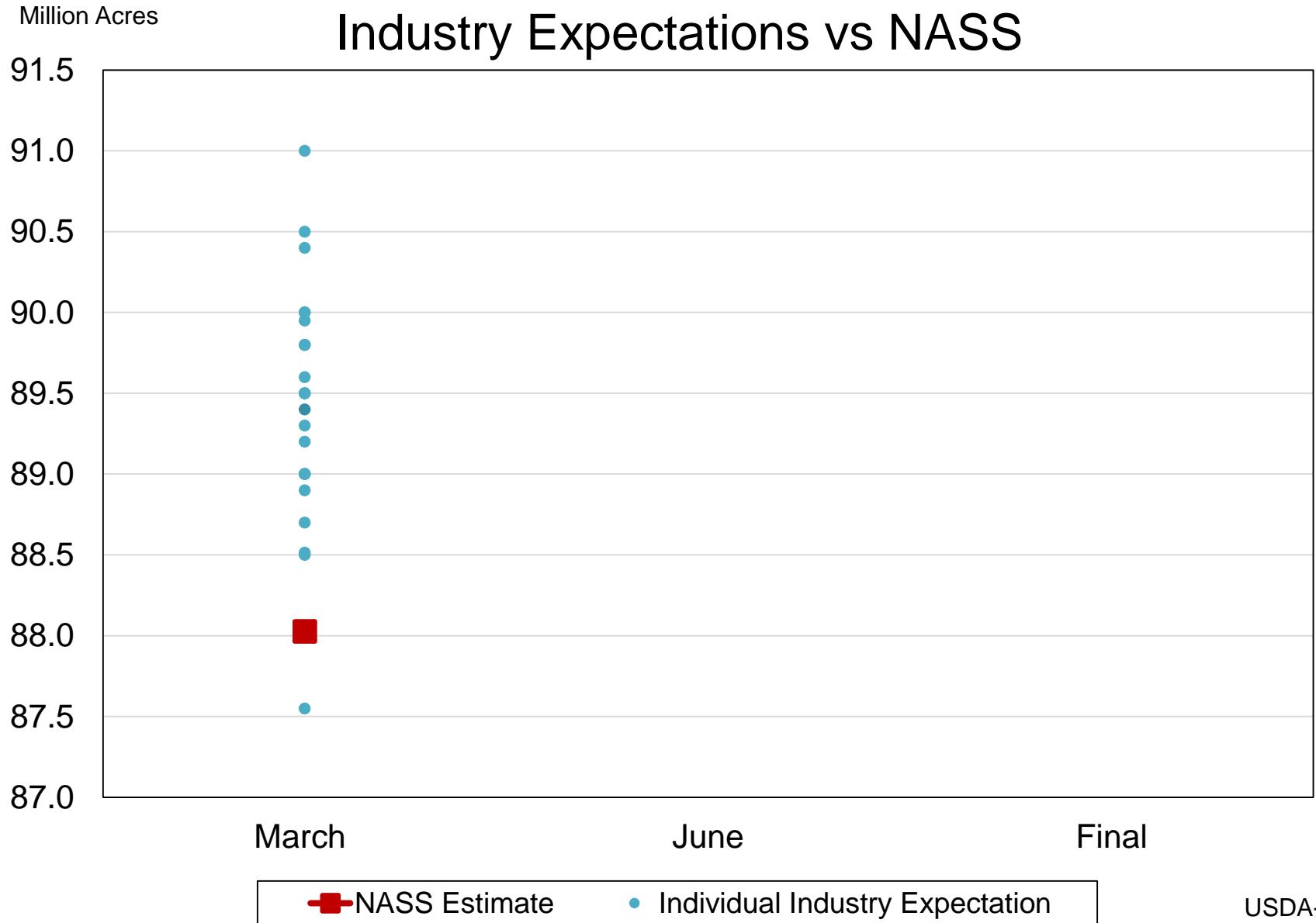
2018 Corn Planted Area

(000) Acres and Change From Previous Year



U.S. 88,026
 -2,141
 # Record High
 & Record Low
 NC = No Change

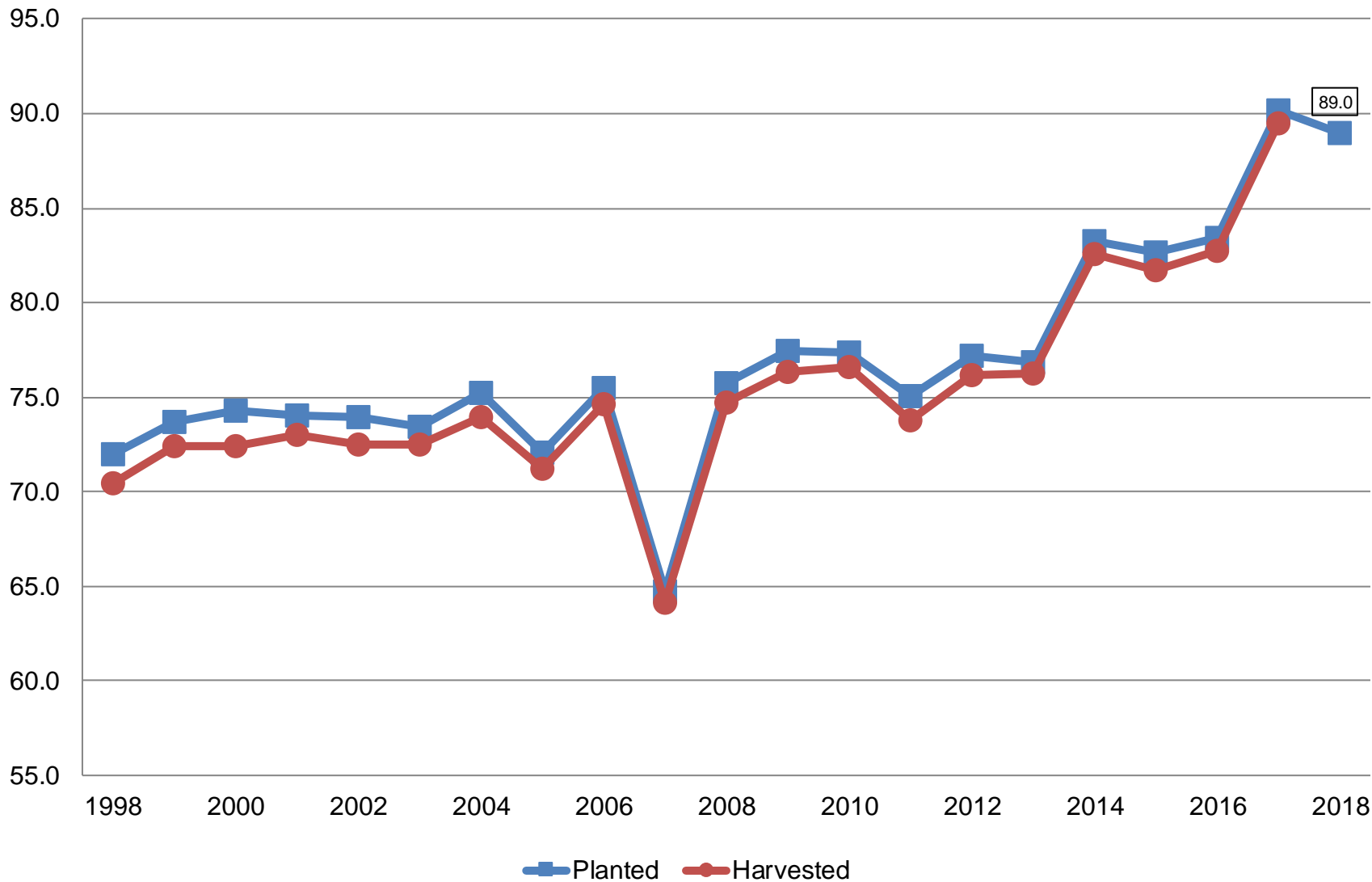
2018 United States Corn Acres Industry Expectations vs NASS





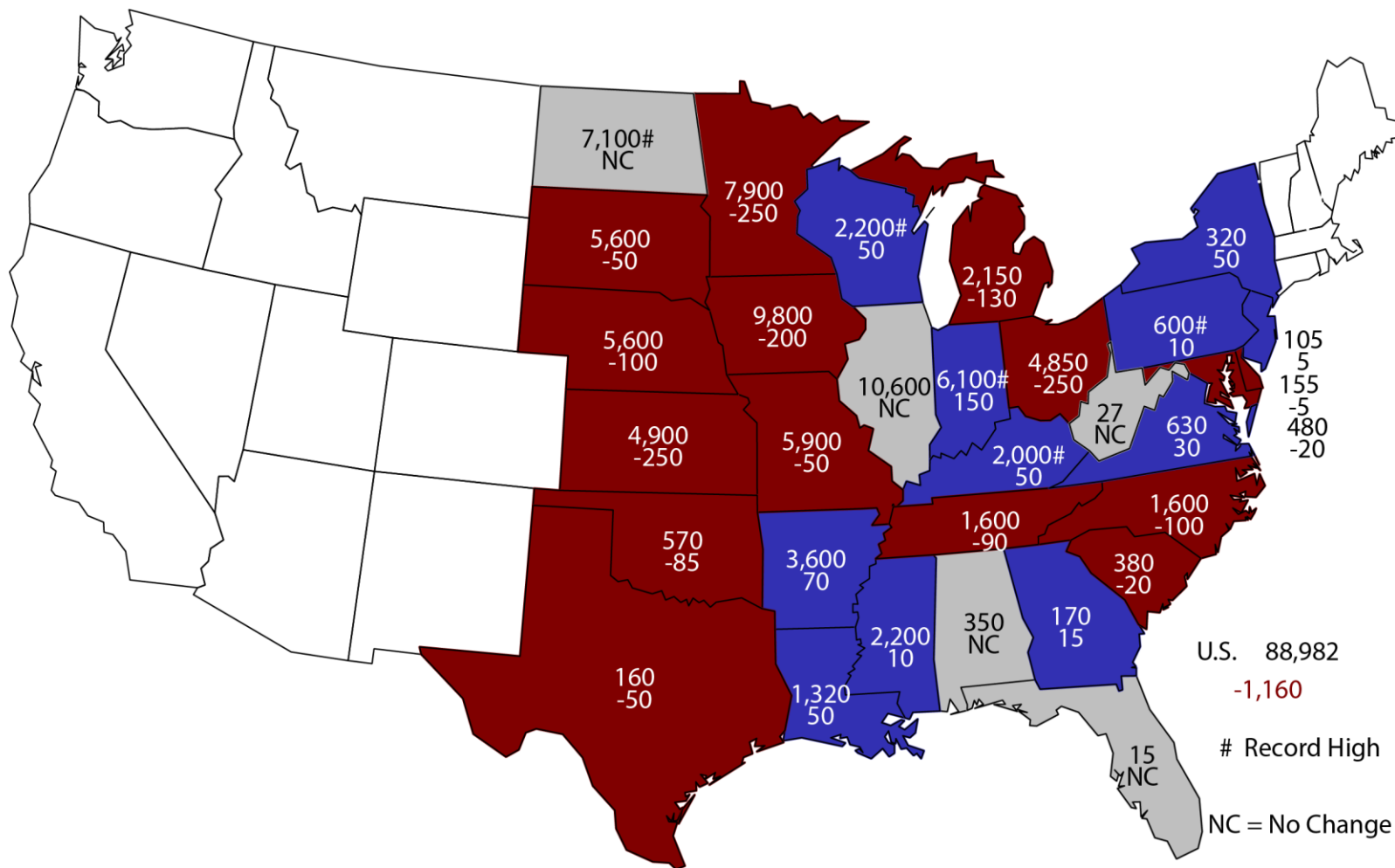
Soybean Acres United States

Million Acres



2018 Soybean Planted Area

(000) Acres and Change From Previous Year

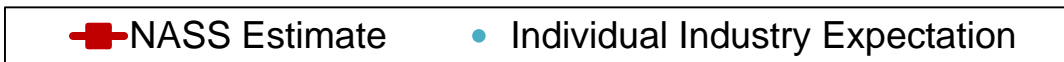
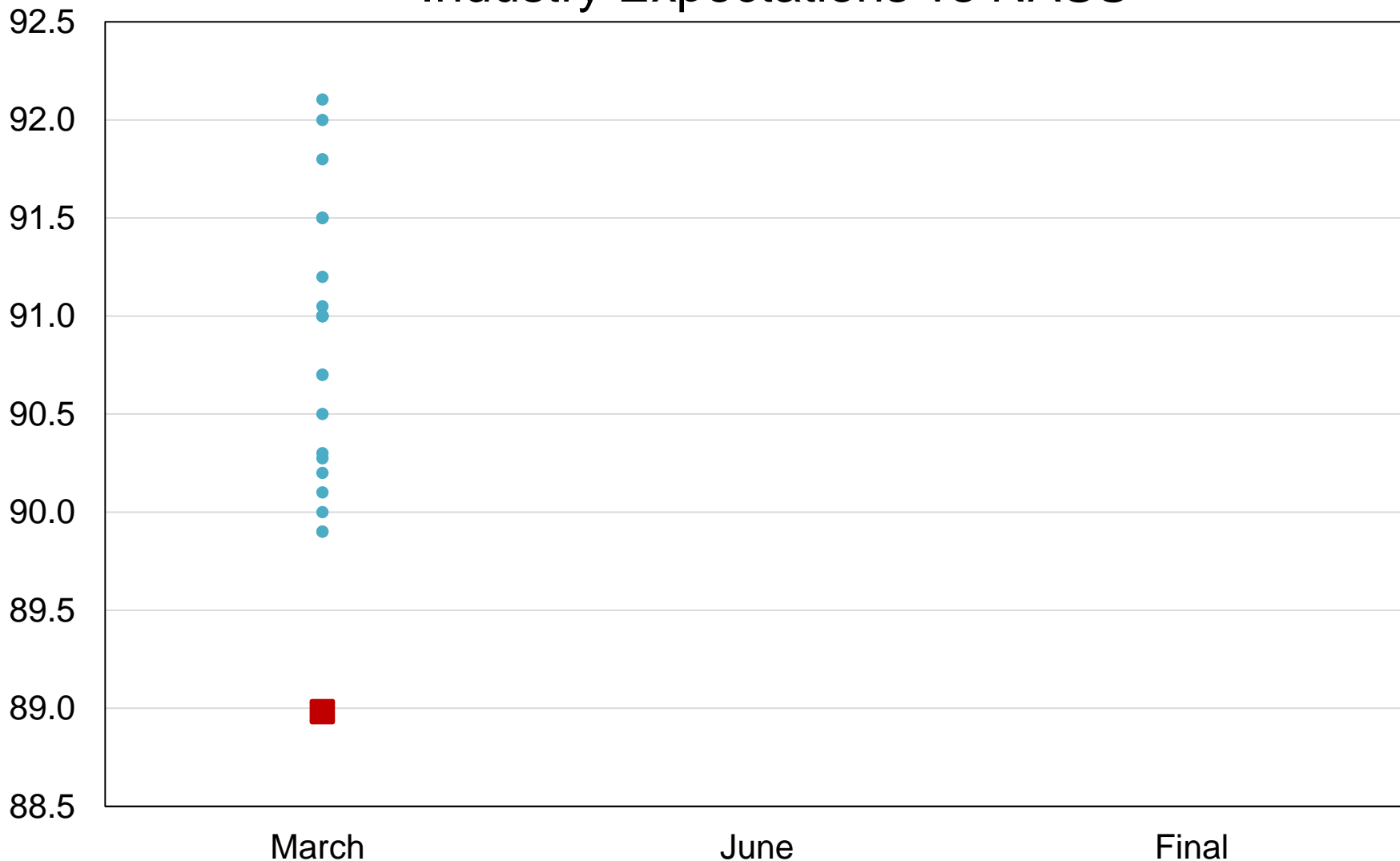


U.S. 88,982
 -1,160
 # Record High
 NC = No Change



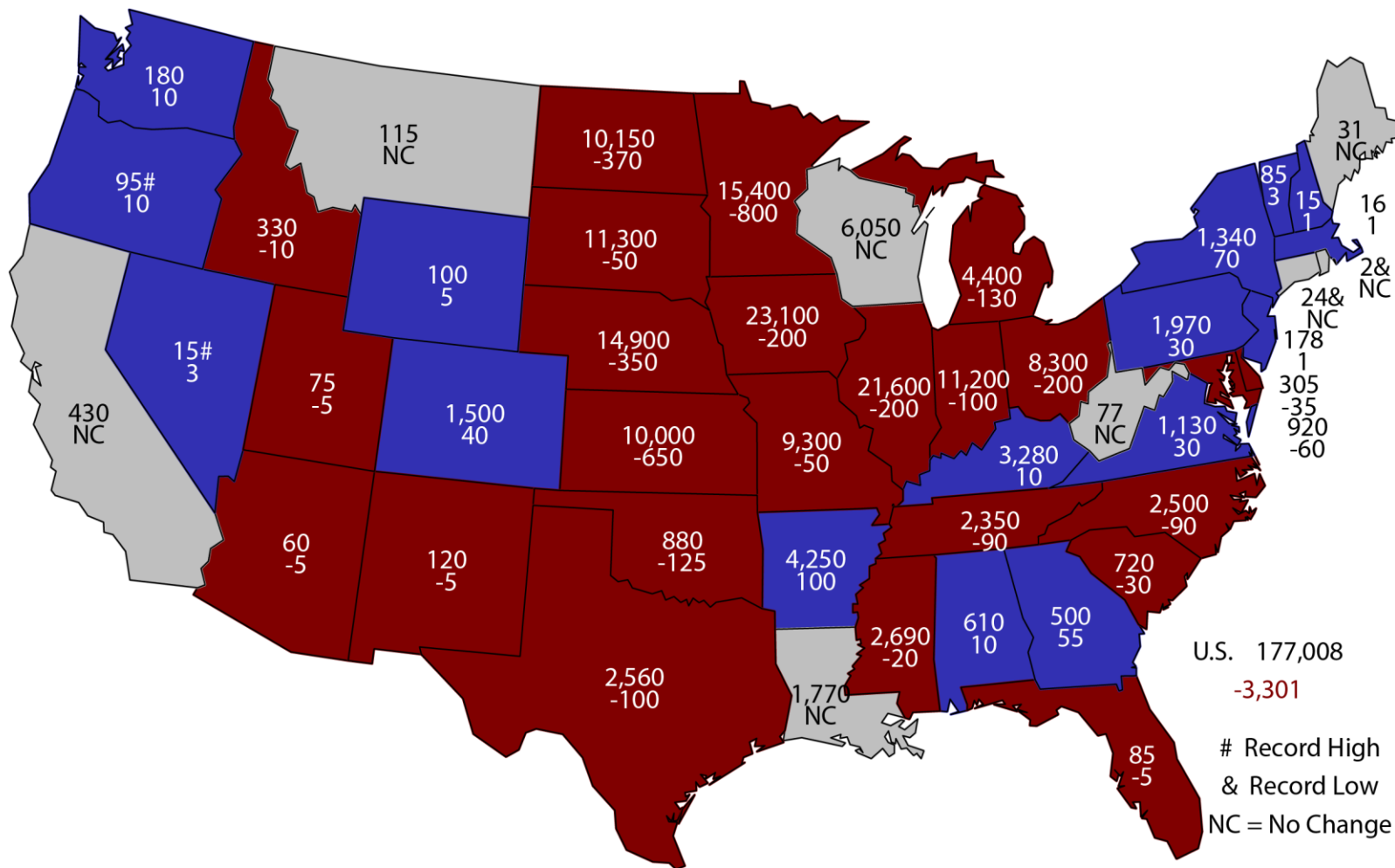
2018 United States Soybean Acres Industry Expectations vs NASS

Million Acres



2018 Combined Corn & Soybean Planted Area

(000) Acres and Change From Previous Year

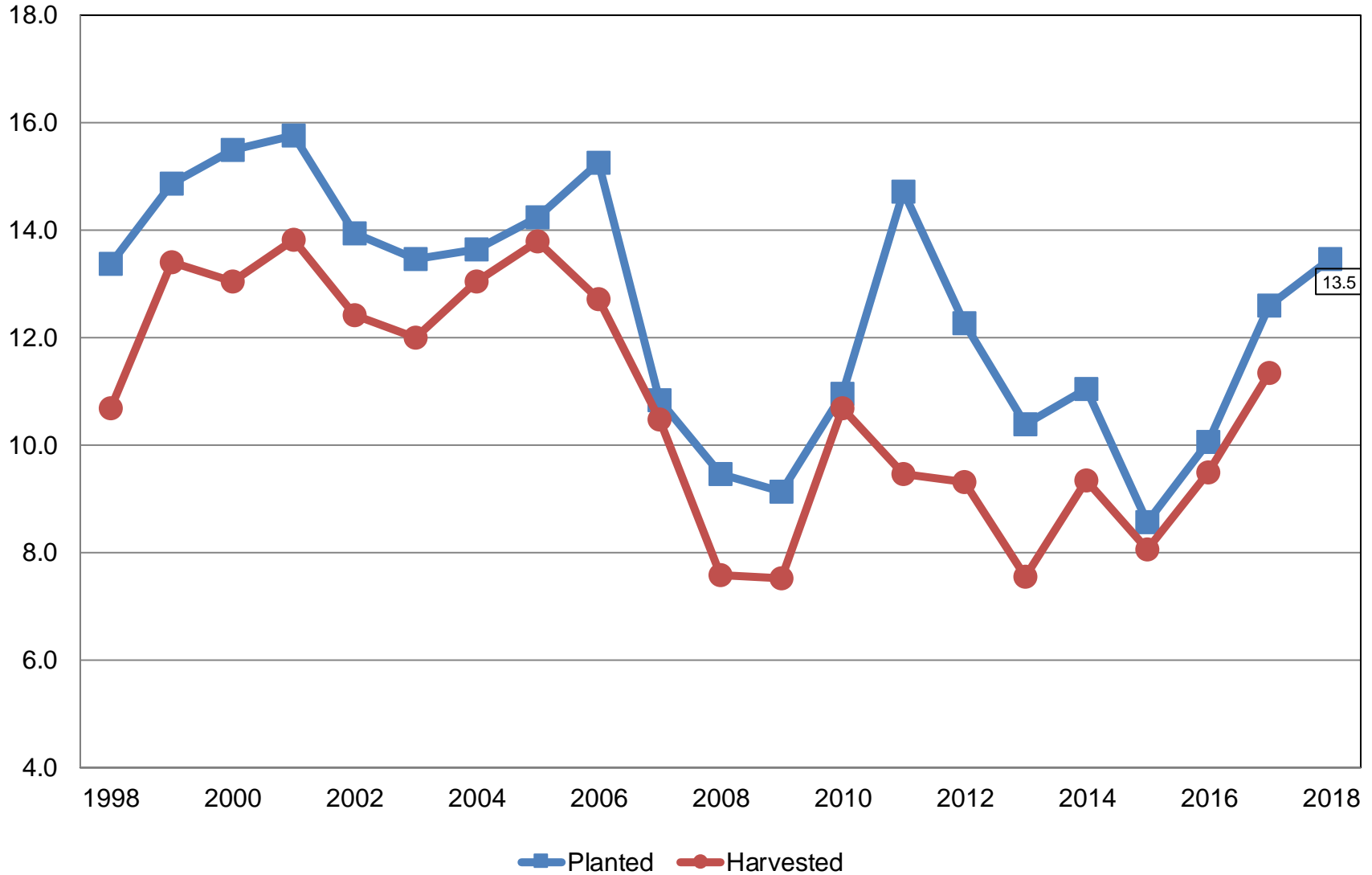


U.S. 177,008
 -3,301
 # Record High
 & Record Low
 NC = No Change



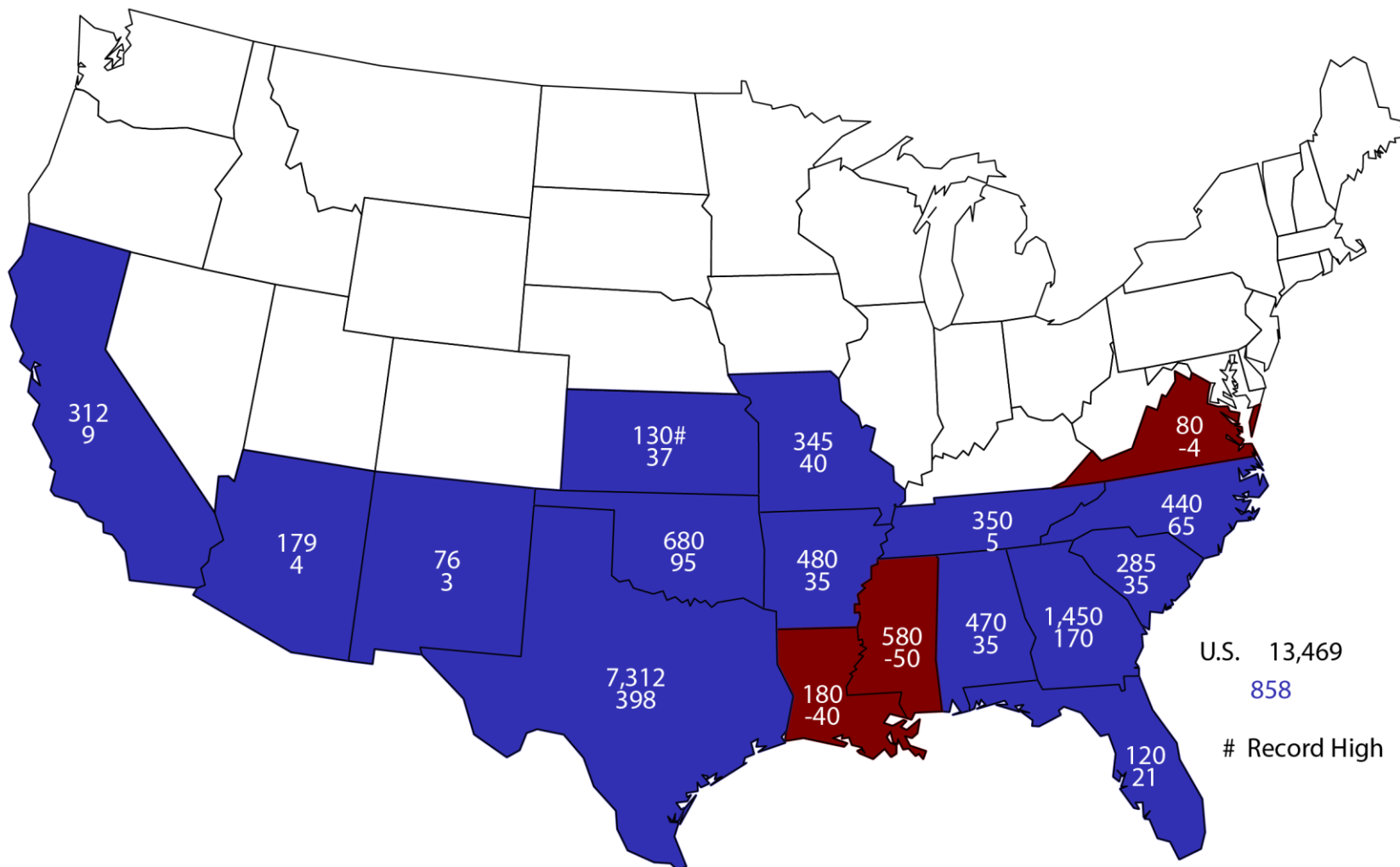
All Cotton Acres United States

Million Acres



2018 All Cotton Planted Area

Acres (000) and Change From Previous Year



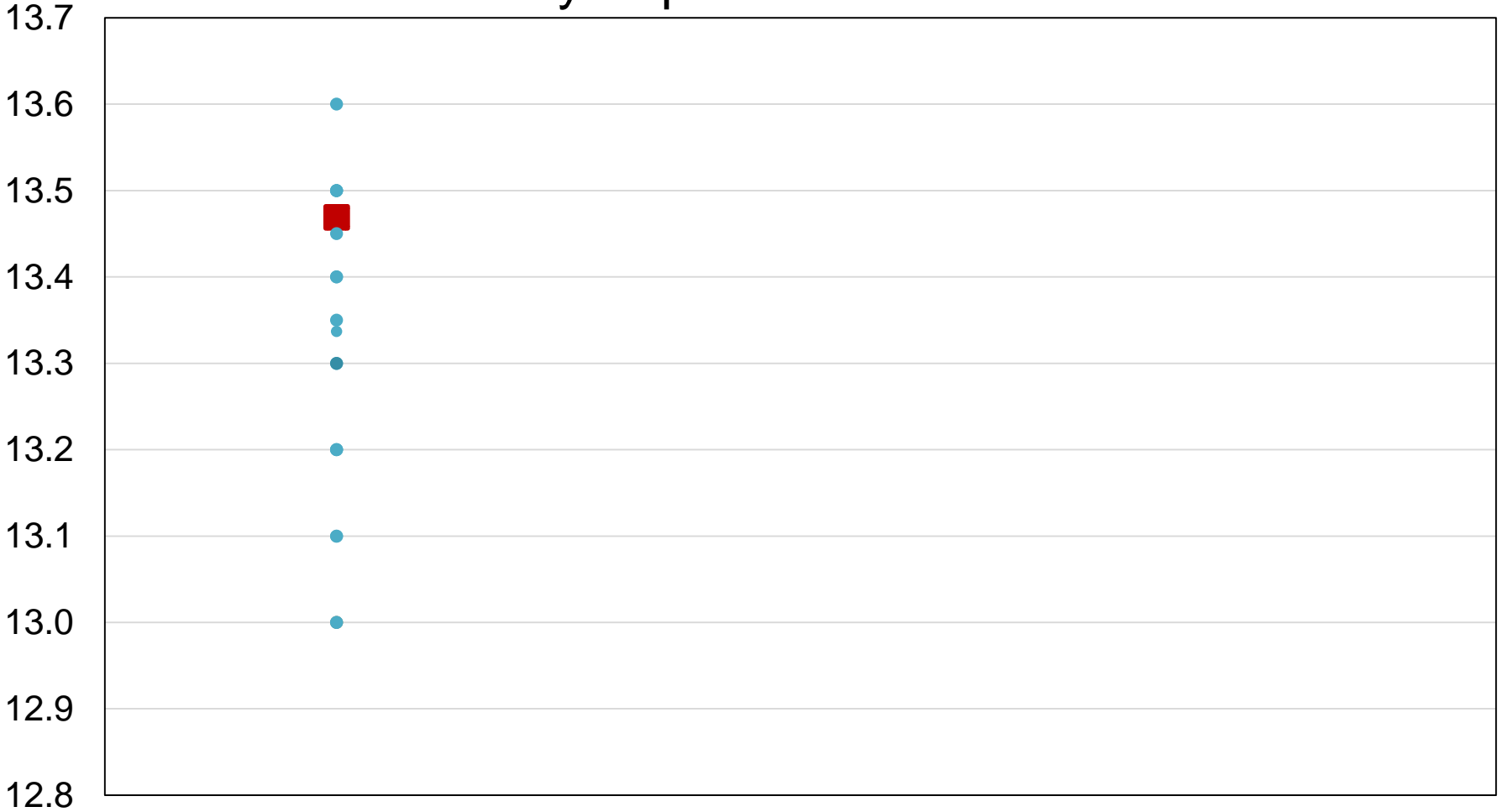
U.S. 13,469
858

Record High



2018 United States Cotton Acres Industry Expectations vs NASS

Million Acres

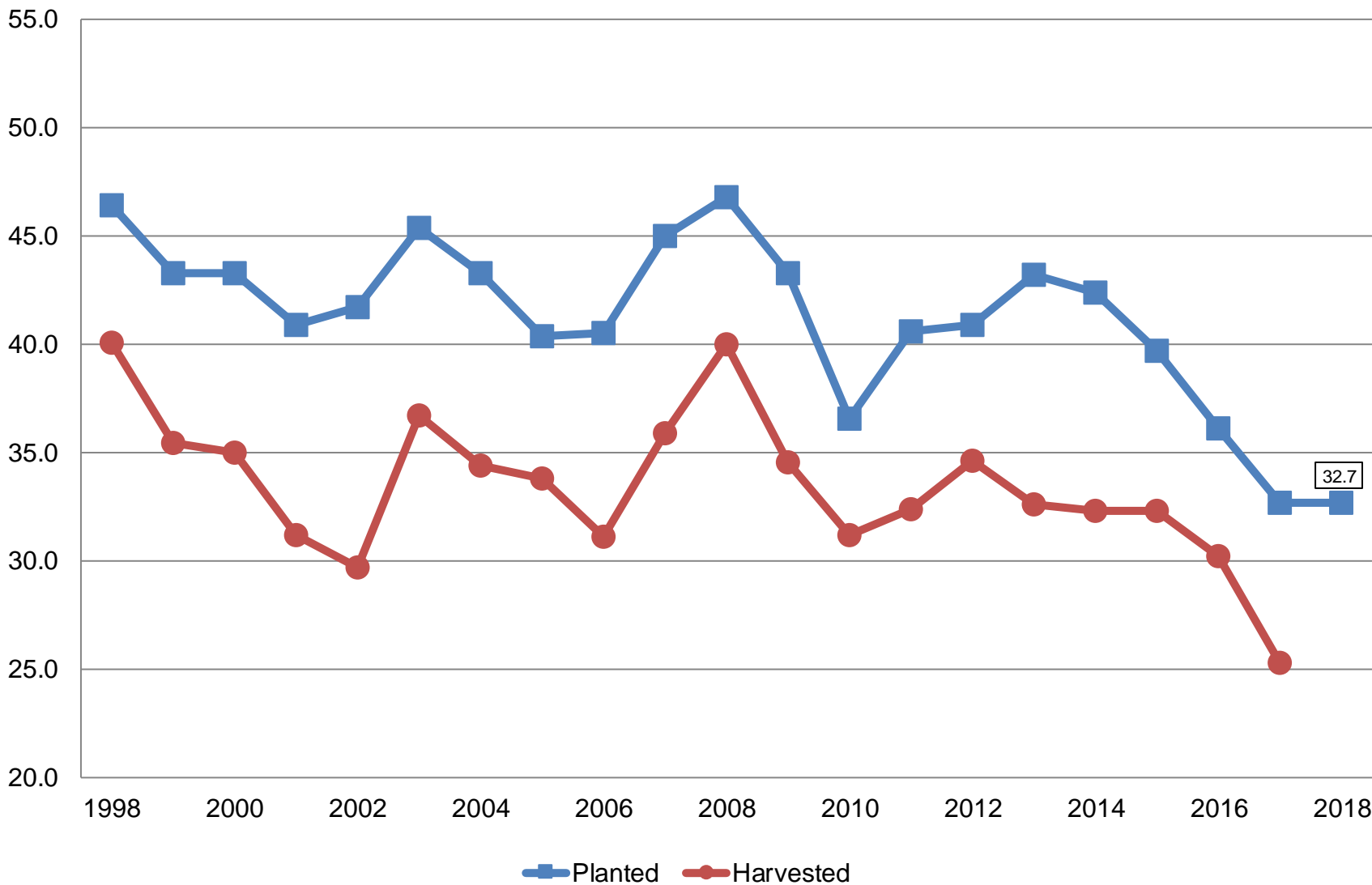


 NASS Estimate  Individual Industry Expectation

Winter Wheat Acres

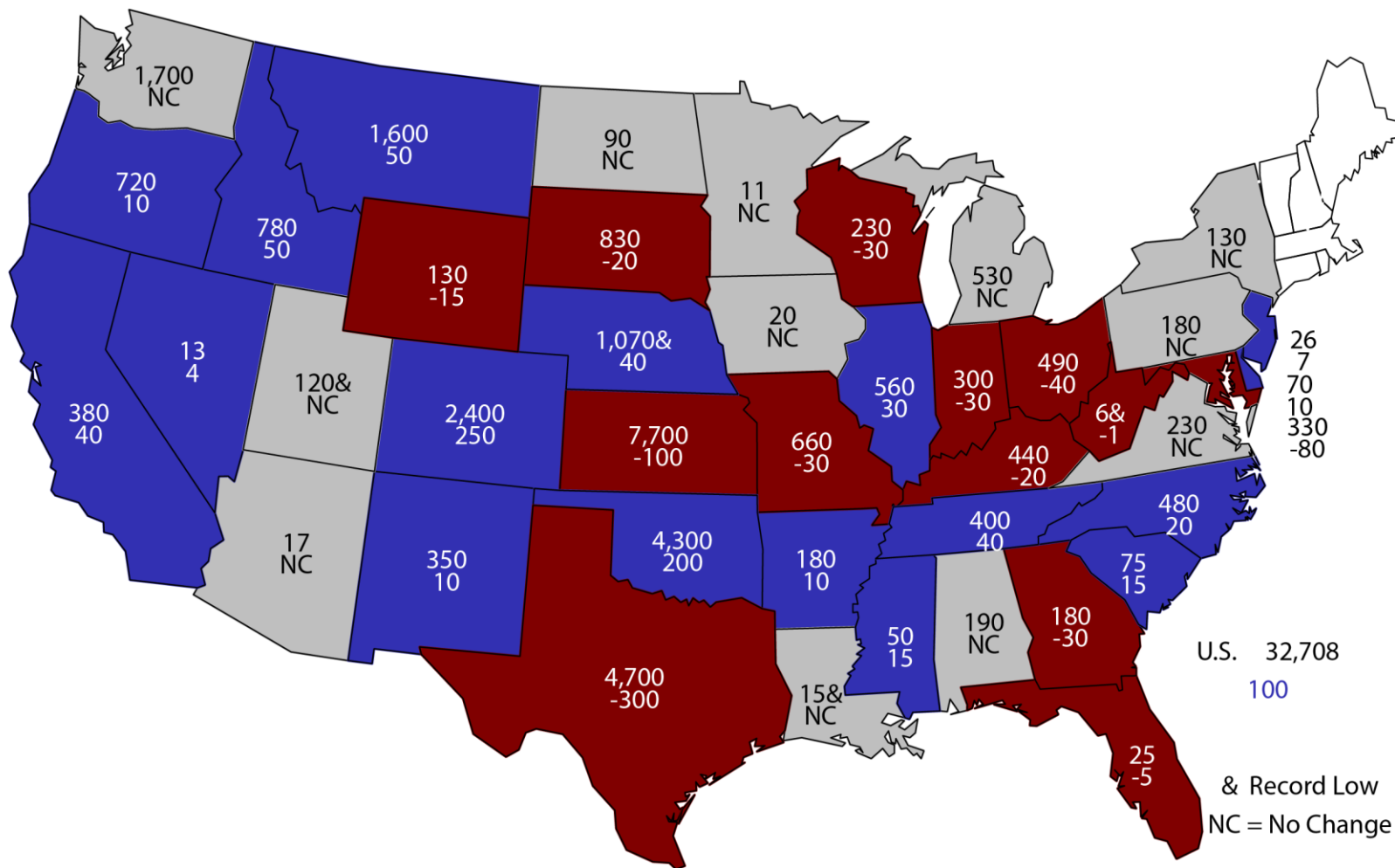
United States

Million Acres



2018 Winter Wheat Planted Area

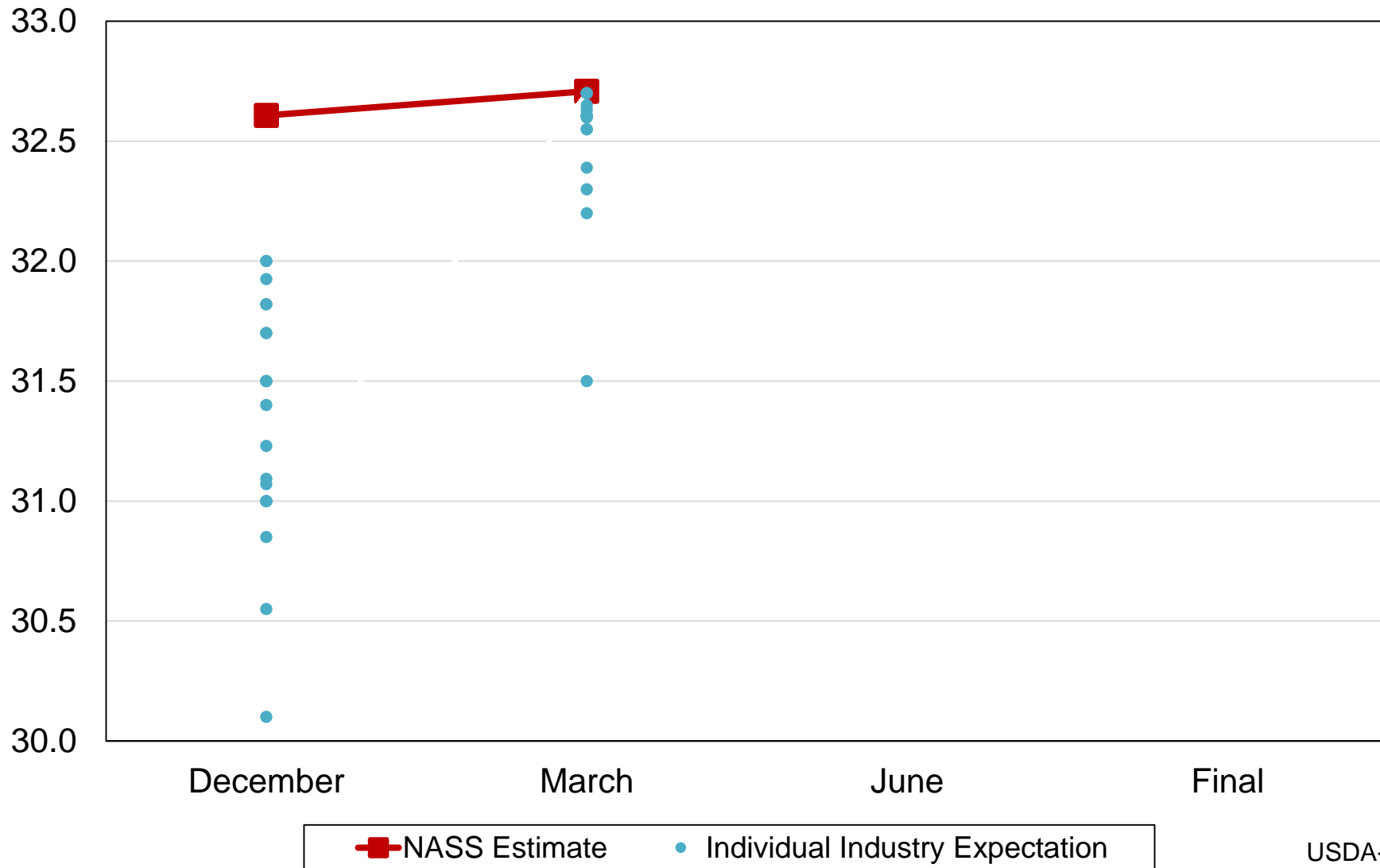
(000) Acres and Change From Previous Estimate



U.S. 32,708
100
& Record Low
NC = No Change

2018 United States Winter Wheat Acres Industry Expectations vs NASS

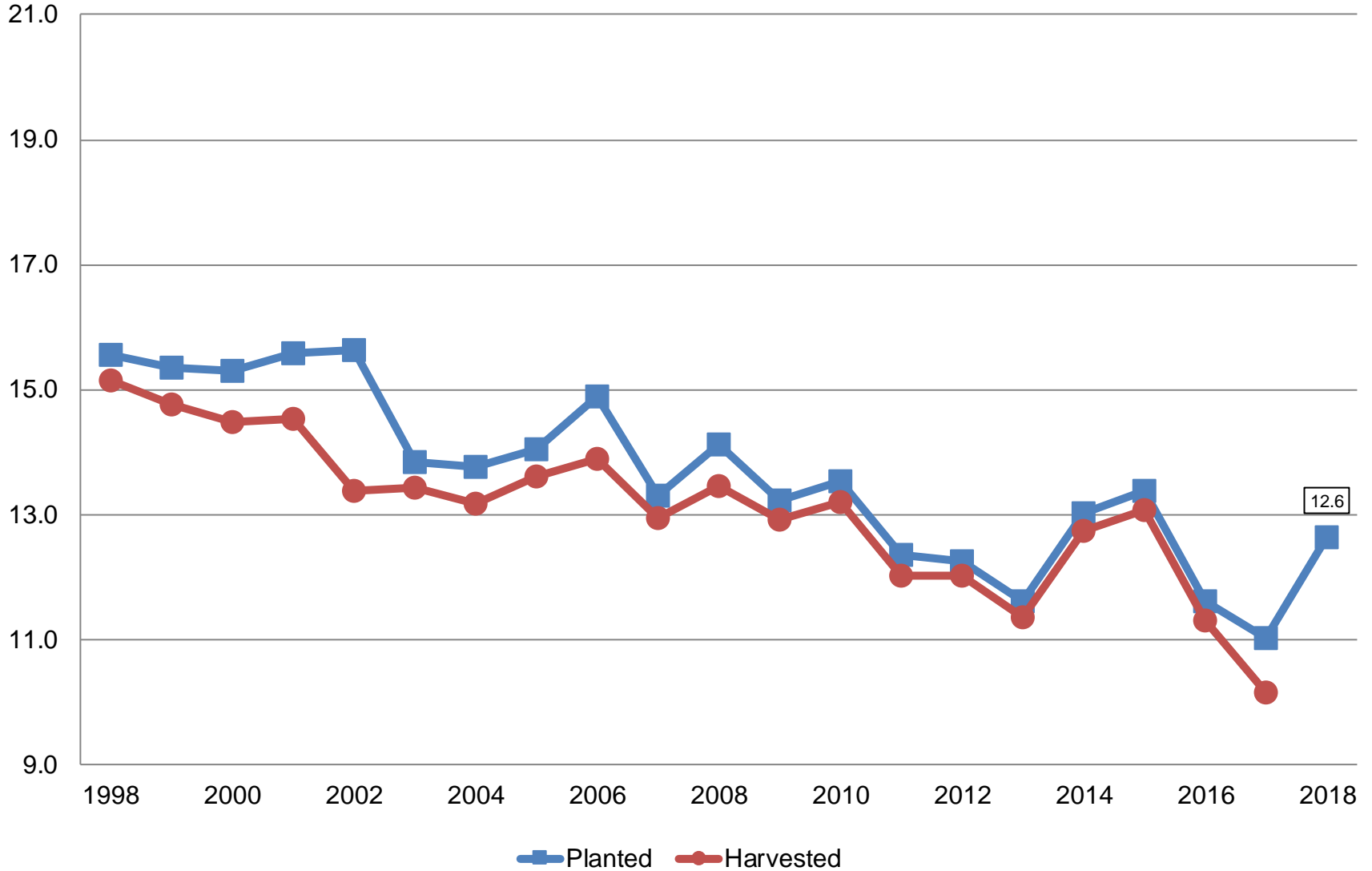
Million Acres





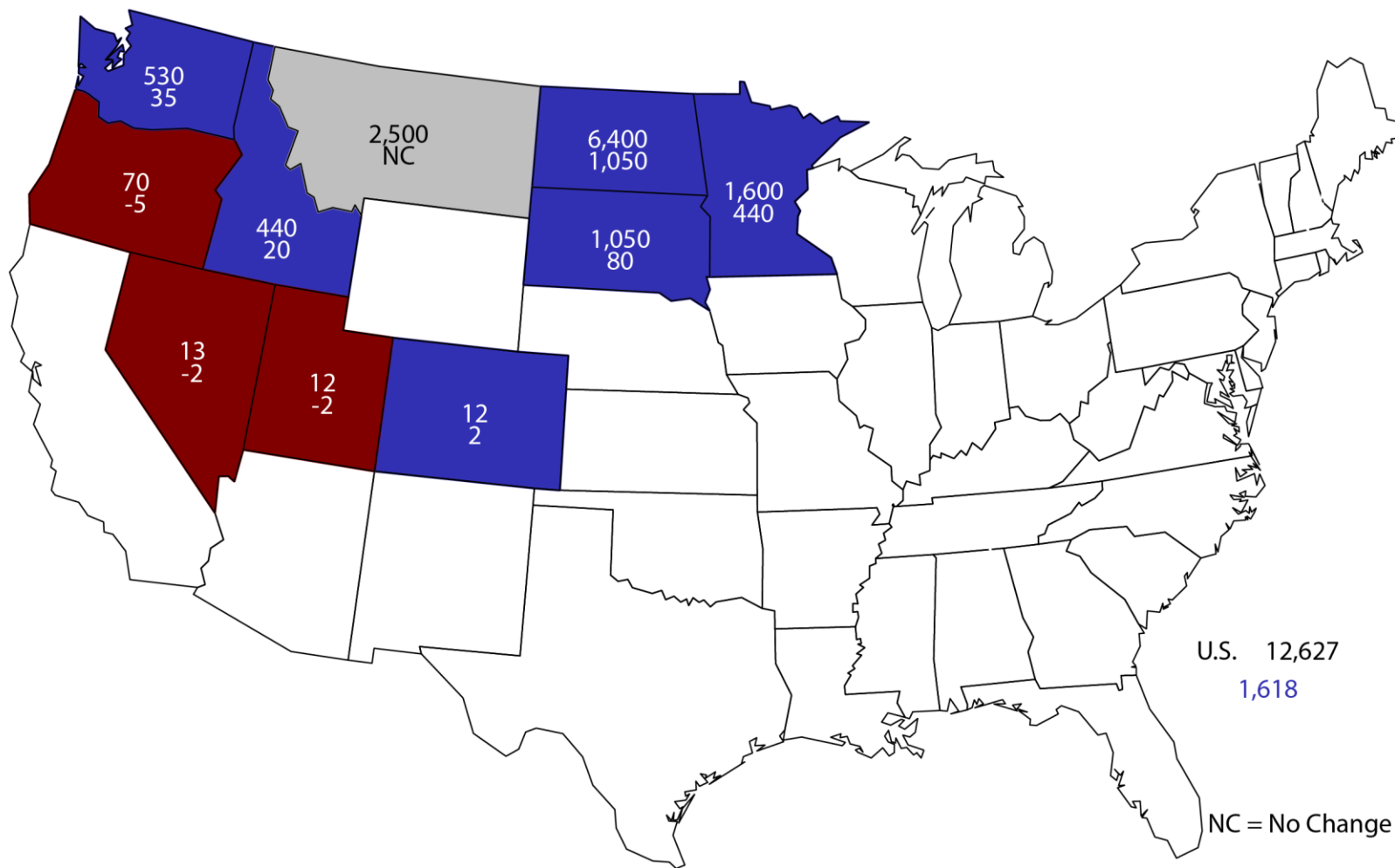
Other Spring Wheat Acres United States

Million Acres



2018 Other Spring Wheat Planted Area

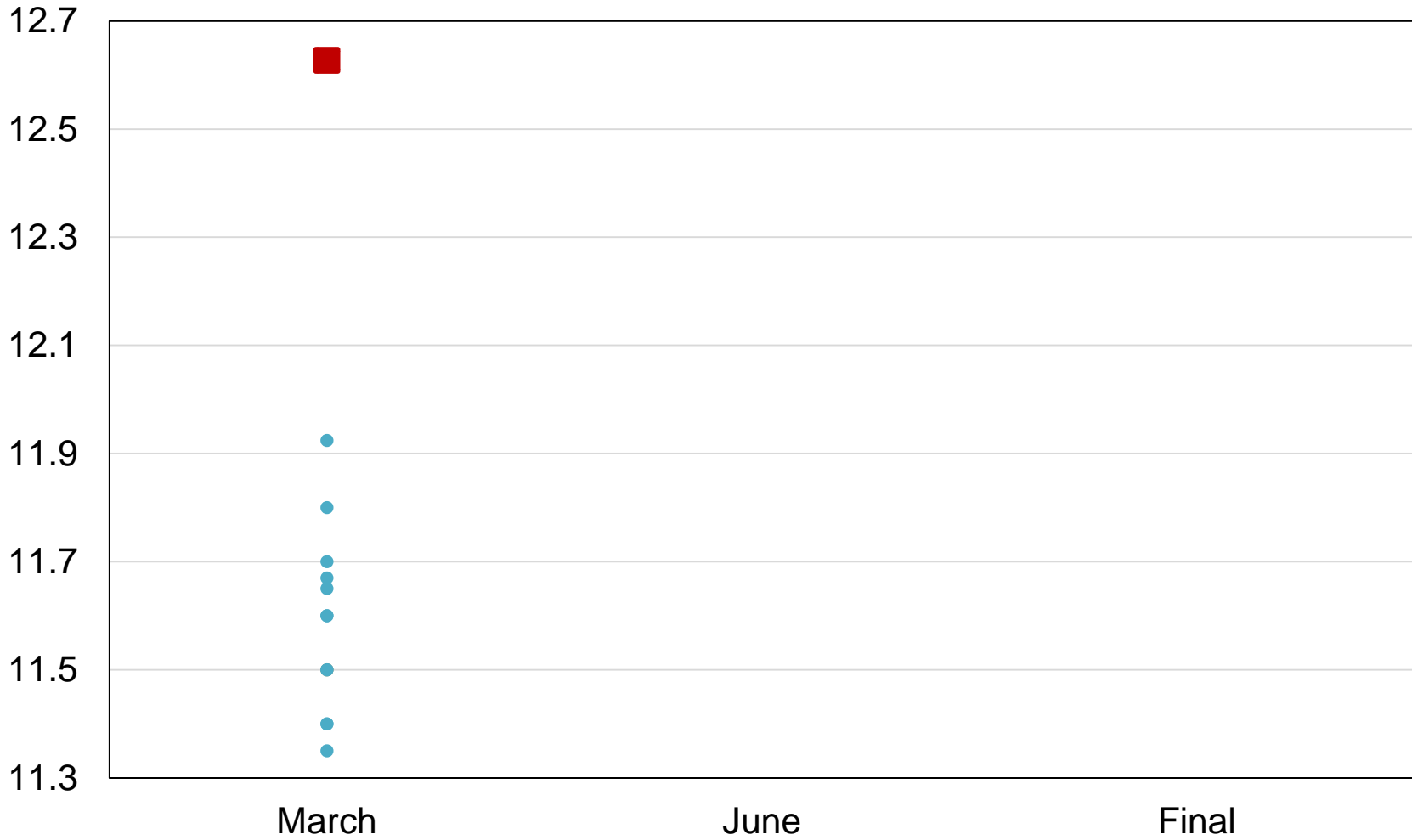
(000) Acres and Change From Previous Year





2018 United States Other Spring Wheat Acres Industry Expectations vs NASS

Million Acres



■ NASS Estimate ● Individual Industry Expectation



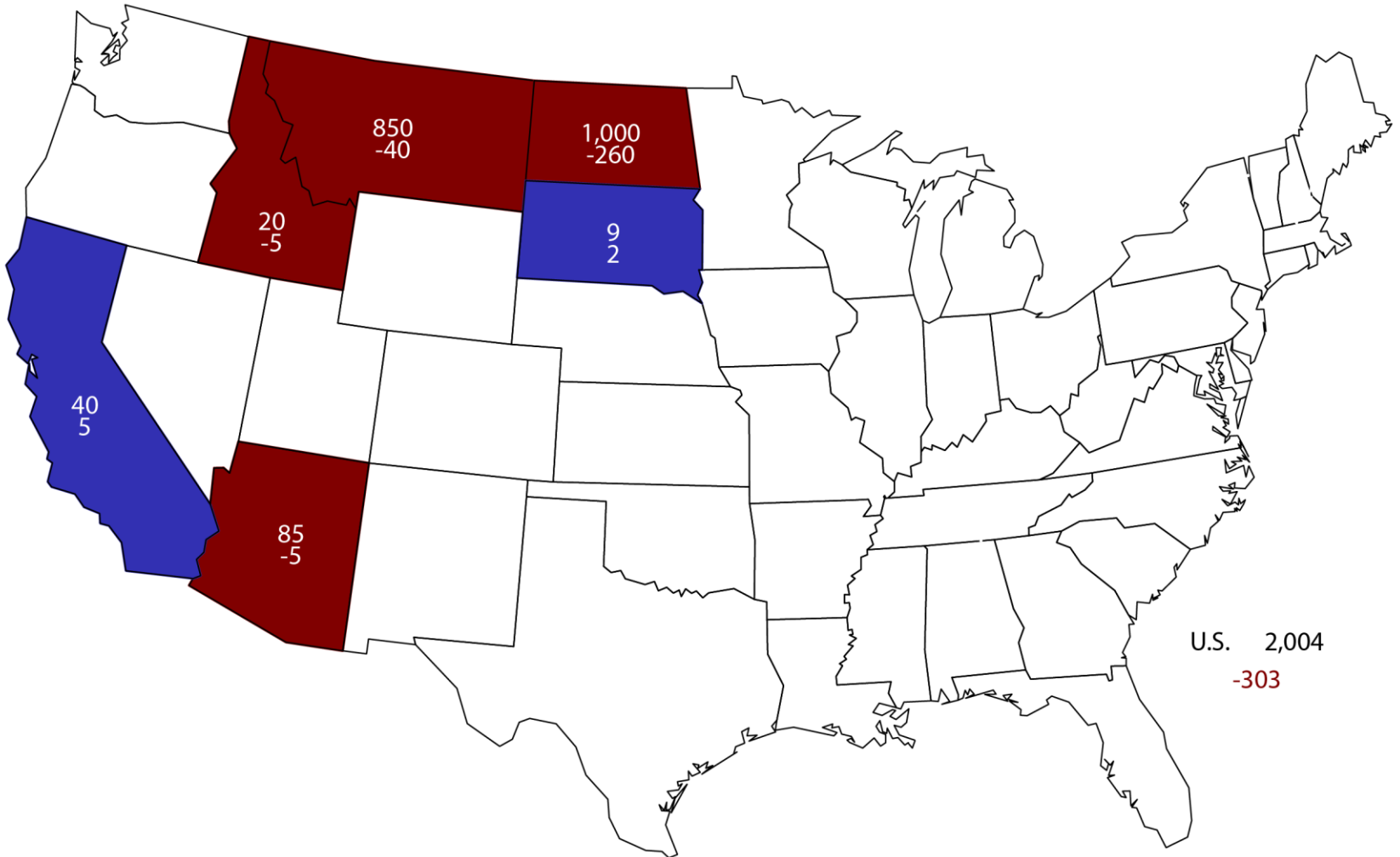
Durum Wheat Acres

United States

Million Acres



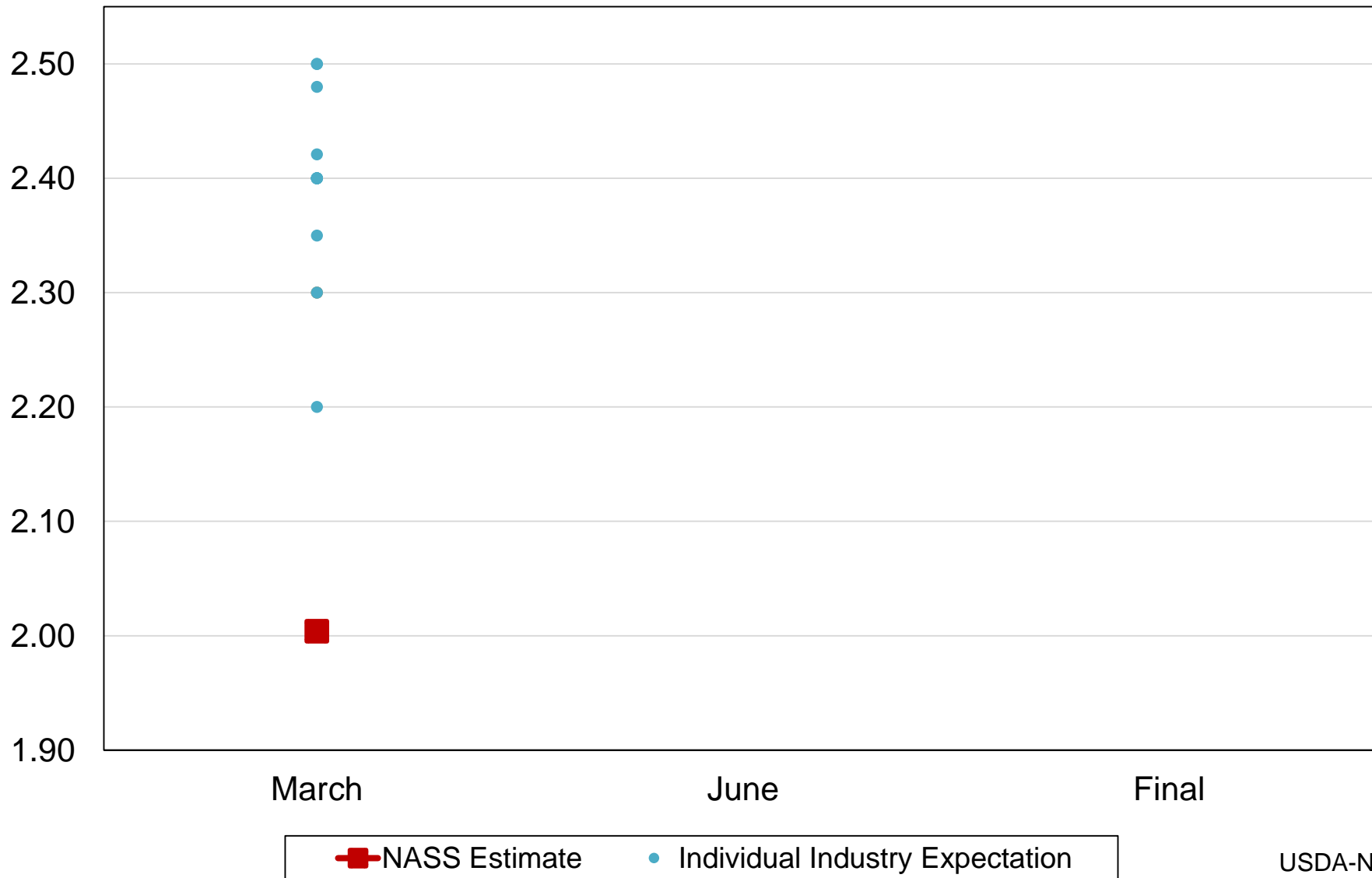
2018 Durum Wheat Planted Area (000) Acres and Change From Previous Year





2018 United States Durum Wheat Acres Industry Expectations vs NASS

Million Acres





March 2018 Prospective Plantings

Crop	Unit	March 2018	% Change From Previous Estimate	% Change From Previous Season
Feed Grains				
Corn	Mil Ac	88.0	NA	-2.4
Sorghum	Mil Ac	5.93	NA	+5.4
Oats	Mil Ac	2.72	NA	+4.9
Barley	Mil Ac	2.29	NA	-7.9



March 2018 Prospective Plantings

Crop	Unit	March 2018	% Change From Previous Estimate	% Change From Previous Season
Food Grains				
Wheat, All	Mil Ac	47.3	NA	+2.9
Wheat, Winter	Mil Ac	32.7	+0.3	+<0.1
Wheat, Spring	Mil Ac	12.6	NA	+14.7
Wheat, Durum	Mil Ac	2.00	NA	-13.1
Rice	Mil Ac	2.69	NA	+9.2



March 2018 Prospective Plantings

Crop	Unit	March 2018	% Change From Previous Estimate	% Change From Previous Season
Oilseeds				
Soybeans	Mil Ac	89.0	NA	-1.3
Peanuts	Mil Ac	1.54	NA	-17.9
Sunflower	Mil Ac	1.39	NA	-1.3
Canola	Mil Ac	2.08	NA	-<0.1
Flaxseed	Thou Ac	225	NA	-25.7
All Cotton	Mil Ac	13.5	NA	+6.8

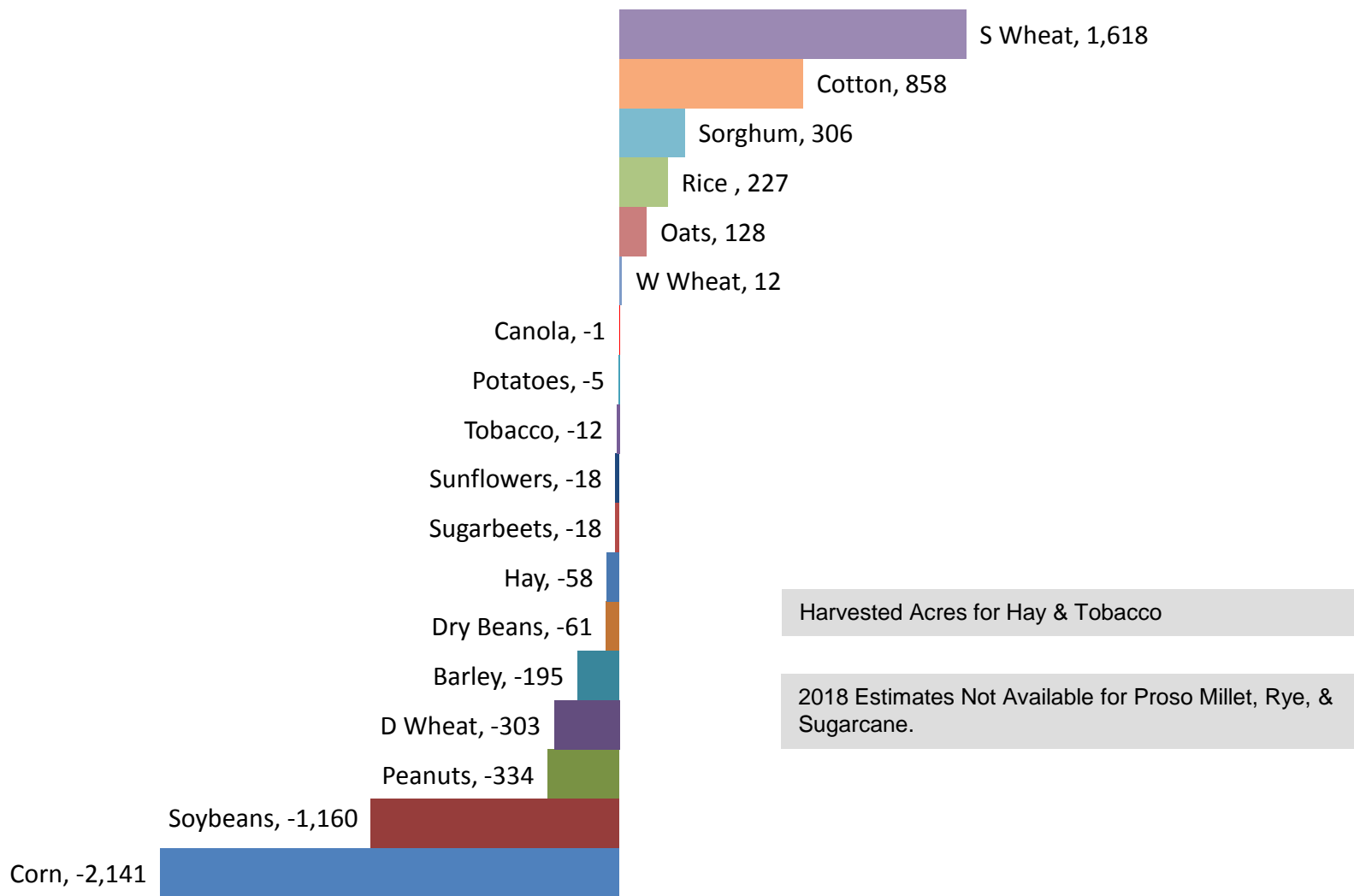


March 2018 Prospective Plantings

Crop	Unit	March 2018	% Change From Previous Estimate	% Change From Previous Season
Other Crops				
All Hay	Mil Ac	53.7	NA	-0.1
Sugarbeets	Mil Ac	1.11	NA	-1.6
Tobacco	Thou Ac	310	NA	-3.7
Spring Potatoes	Thou Ac	53.0	NA	-8.6
Dry Edible Beans	Mil Ac	2.03	NA	-2.9
Chickpeas	Thou Ac	665	NA	+7.5
Lentils	Thou Ac	791	NA	-28.4
Dry Edible Peas	Thou Ac	908	NA	-19.5
A. Winter Peas	Thou Ac	19.0	NA	-28.3
Sweet Potatoes	Thou Ac	159	NA	-1.9

Principal Crop Planted Acres (000)

2018 Change From 2017





March 2018 Grain Stocks

Crop	Unit	March 2018	% Change From Previous Estimate	% Change From Previous Year
Stocks				
Corn	Bil Bu	8.89	NA	+3.1
Soybeans	Bil Bu	2.11	NA	+21.2
Sorghum	Mil Bu	138	NA	-23.5
Sunflower	Bil Lbs	1.24	NA	-8.4
Rice	Mil Cwt	83.4	NA	-22.5

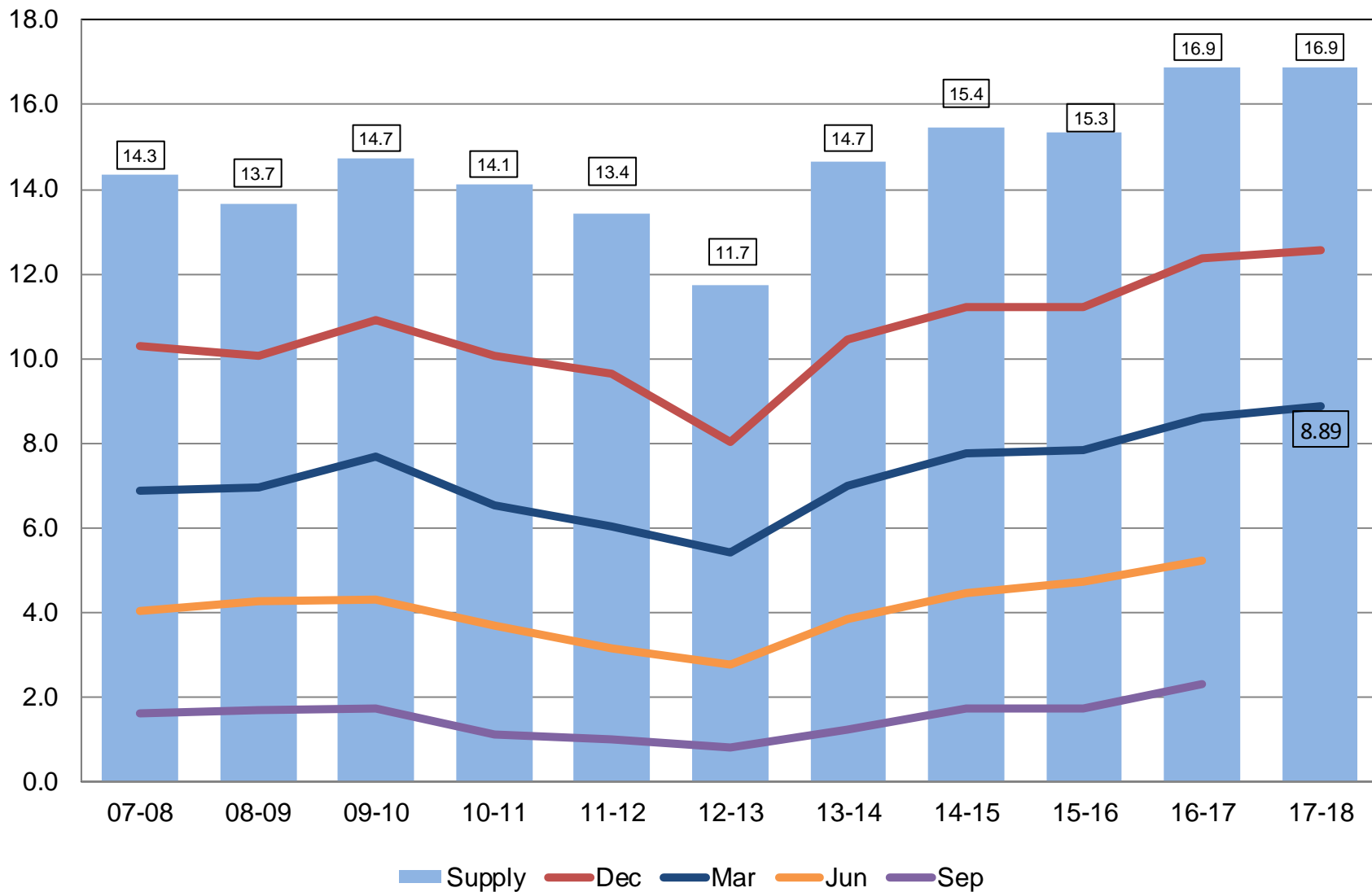


March 2018 Grain Stocks

Crop	Unit	March 2018	% Change From Previous Estimate	% Change From Previous Year
Stocks				
All Wheat	Bil Bu	1.49	NA	-9.9
Barley	Mil Bu	129	NA	-10.6
Oats	Mil Bu	55.1	NA	-12.9

Corn Stocks United States

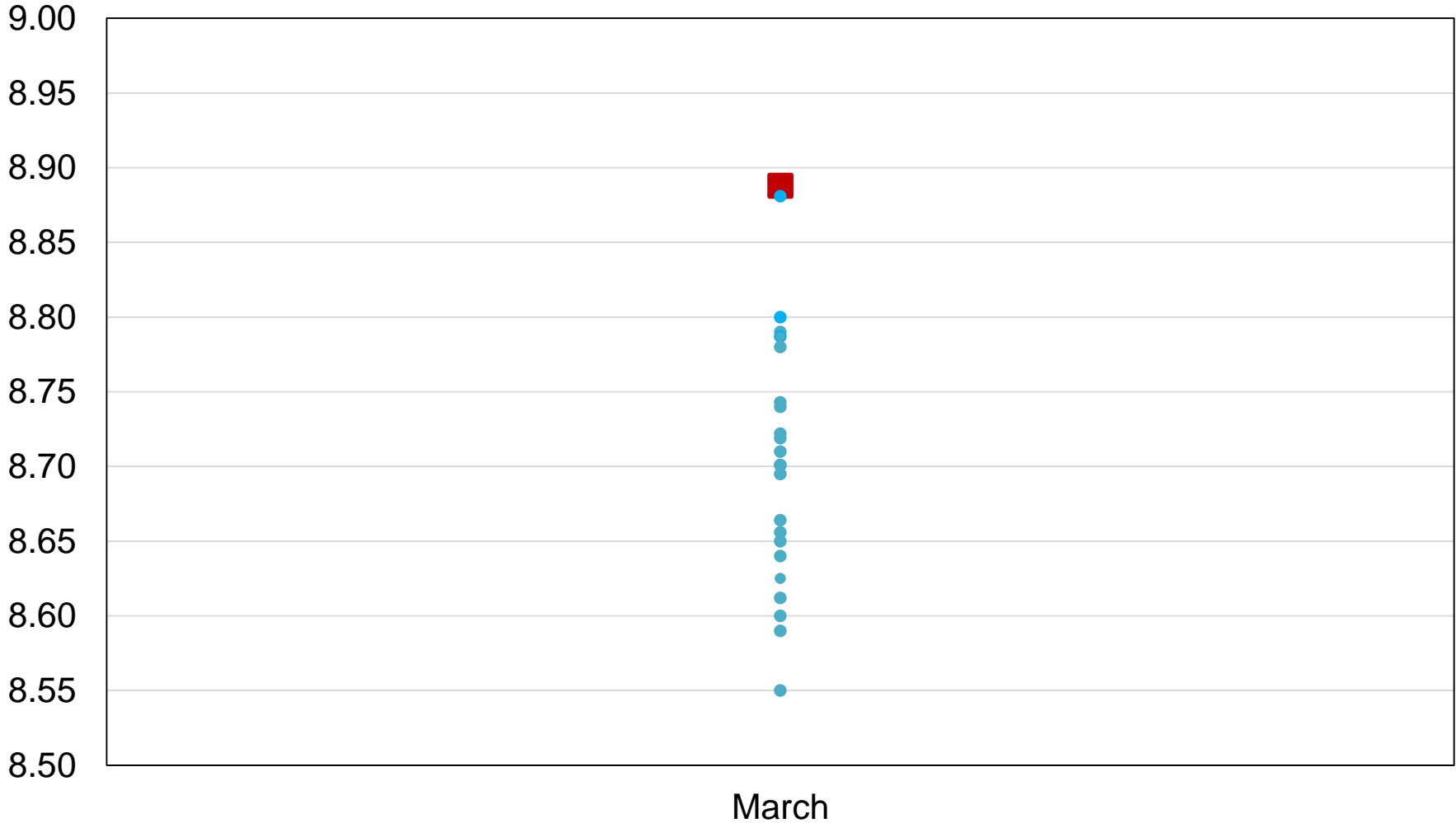
Billion Bushels





2018 United States Corn Stocks Industry Expectations vs NASS

Billion Bushels

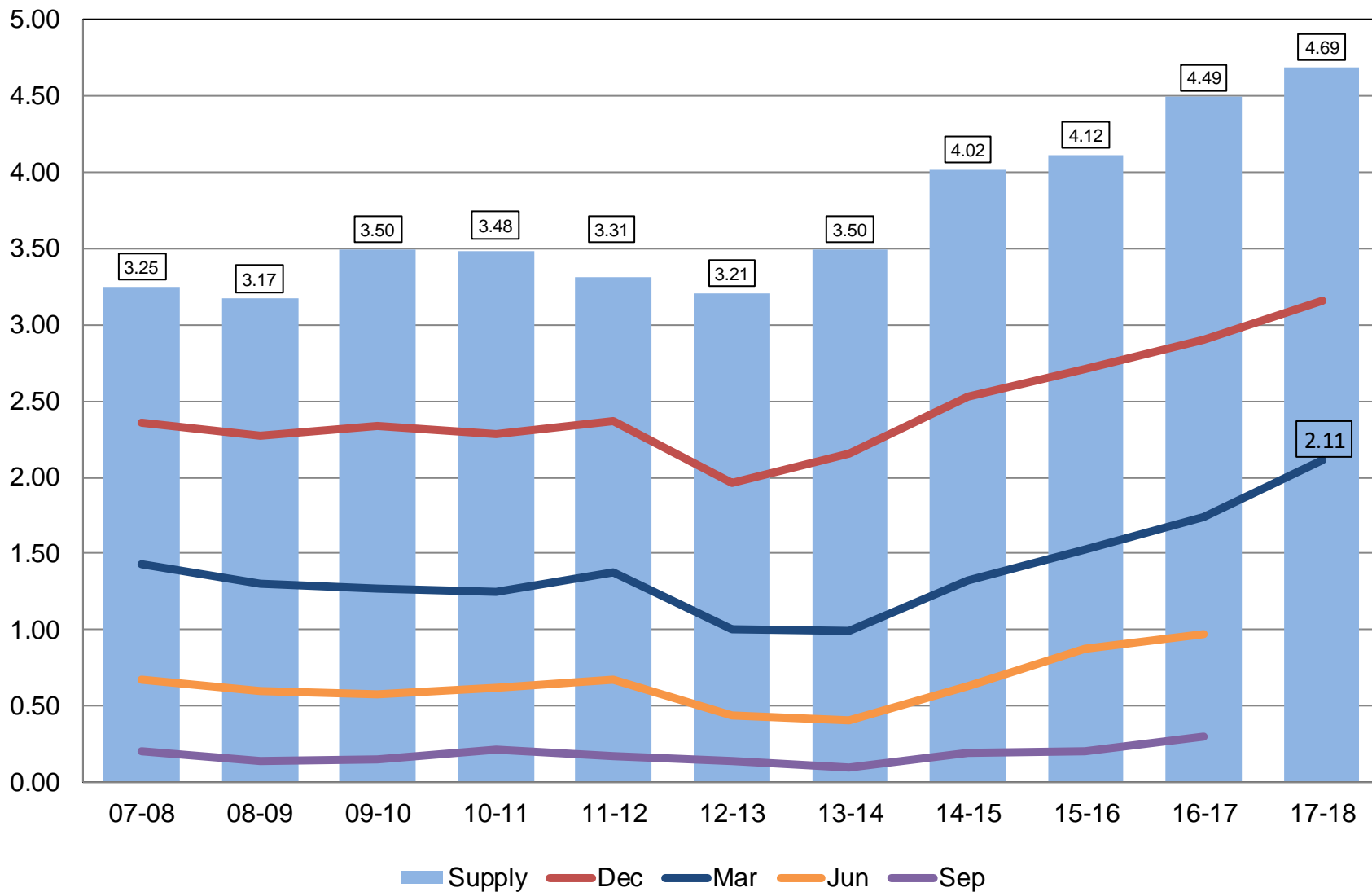


■ NASS Estimate ● Individual Industry Expectation



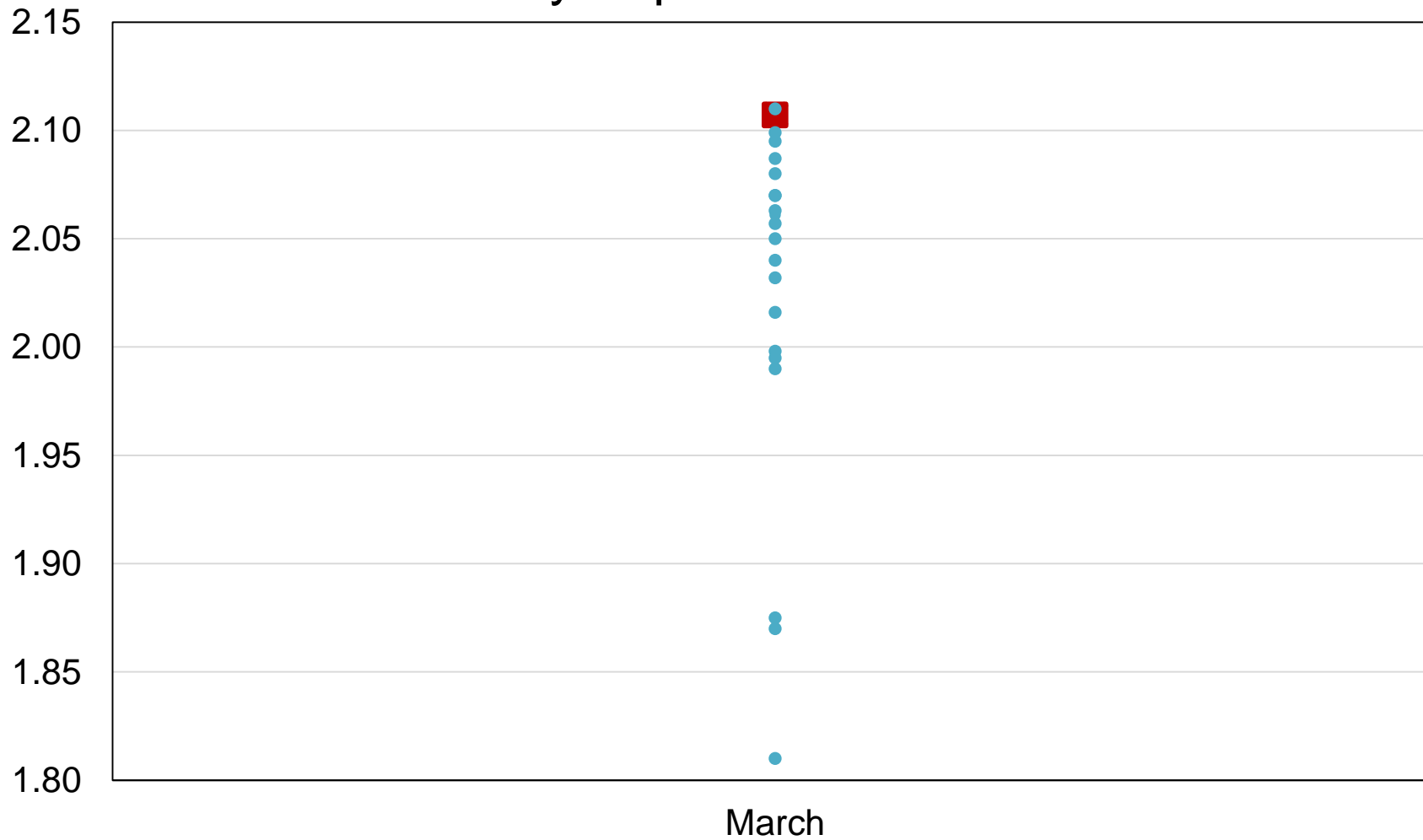
Soybean Stocks United States

Billion Bushels



2018 United States Soybean Stocks Industry Expectations vs NASS

Million Acres

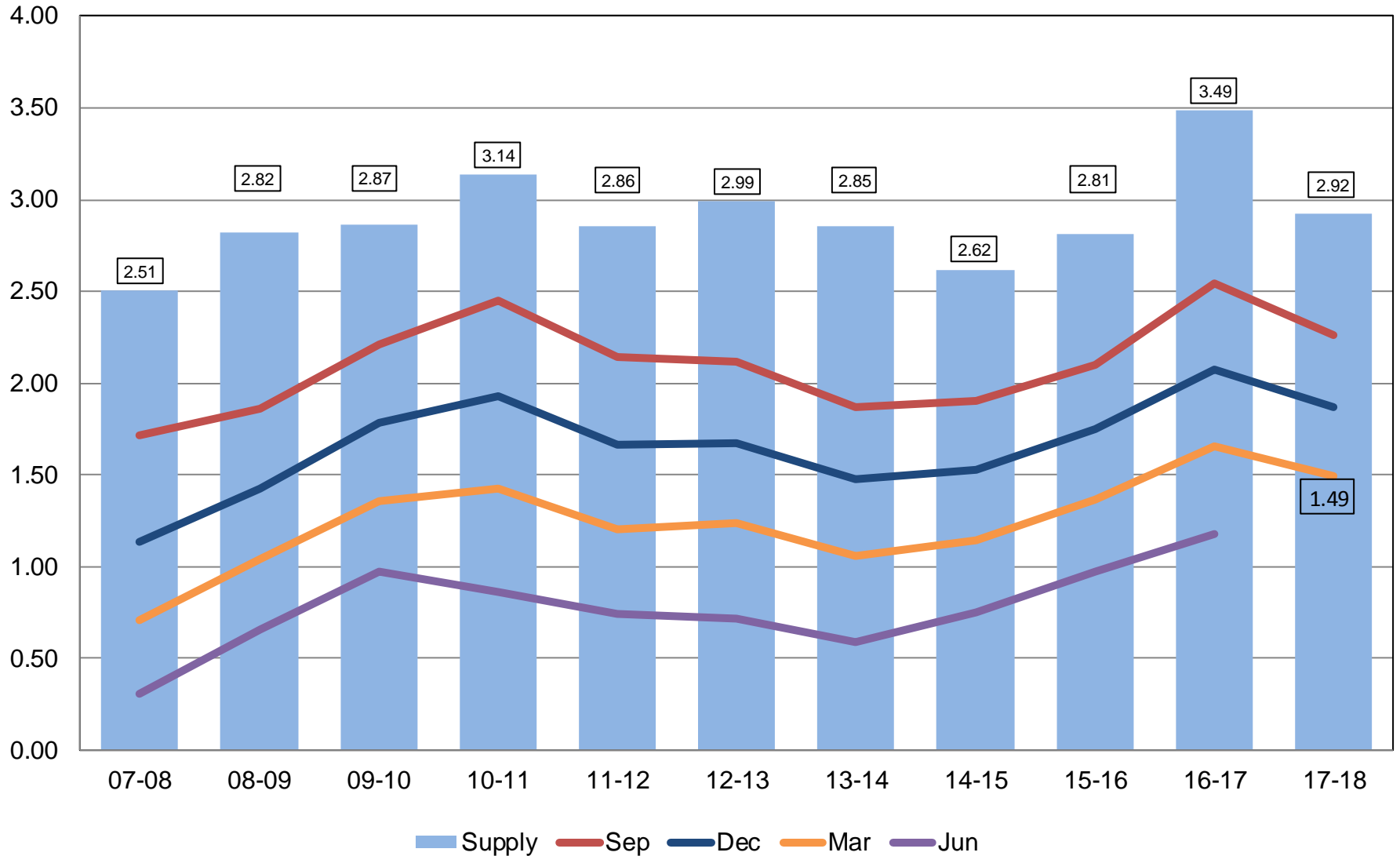


NASS Estimate Individual Industry Expectation



All Wheat Stocks United States

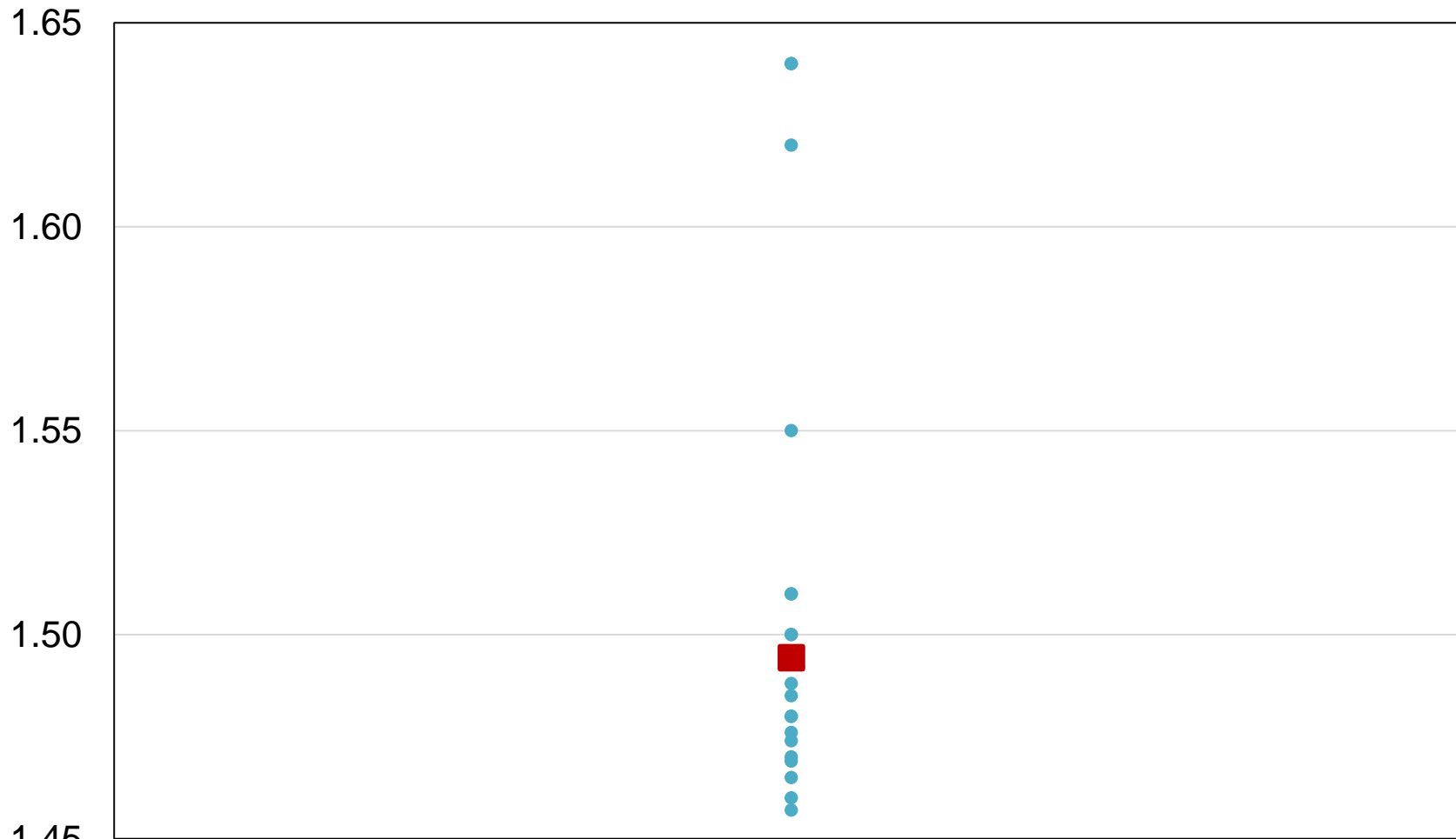
Billion Bushels



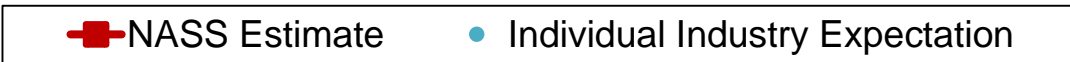


2018 United States All Wheat Stocks Industry Expectations vs NASS

Billion Bushels

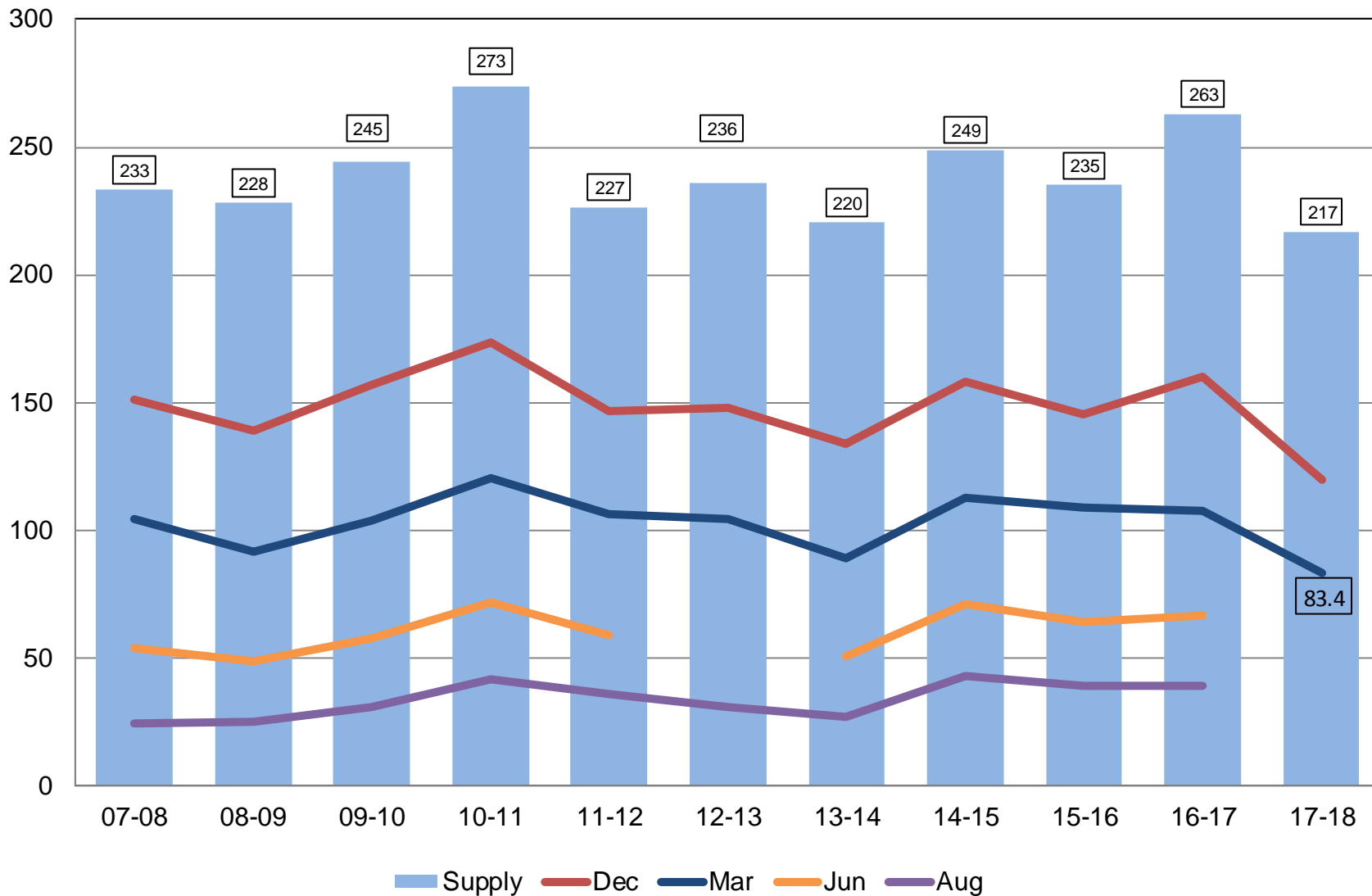


March



Rough Rice Stocks United States

Million Hundredweight





Upcoming Reports

Release Date	Report Title
March 29	Quarterly Hogs and Pigs
April 2	CAIR: Grain Crushings, Fats & Oils, and Cotton System Crop Progress
April 10	Crop Production
April 20	Cattle on Feed
April 27	Agricultural Prices



USDA NASS Data Users' Meeting

Tuesday, April 24, 2018
Chicago, Illinois

LEARN MORE and REGISTER HERE

https://www.nass.usda.gov/go/Data_Users/



United States Department of Agriculture
National Agricultural Statistics Service



2017 CENSUS OF AGRICULTURE

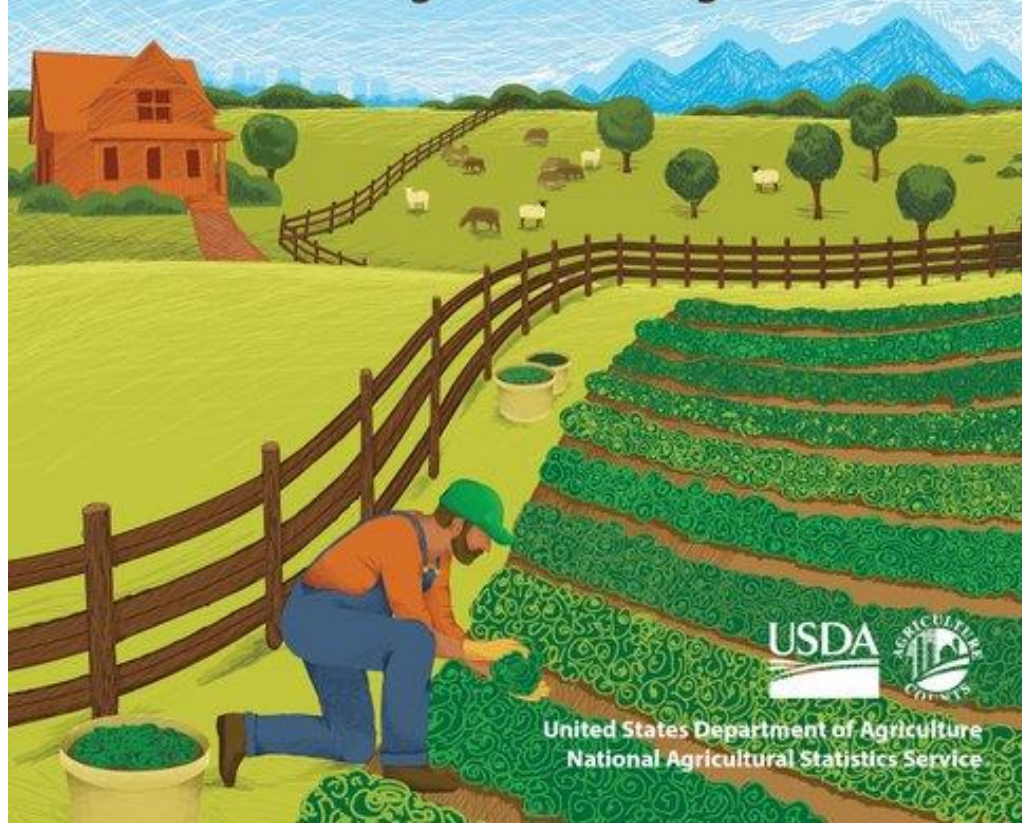
YOUR VOICE. YOUR FUTURE. YOUR OPPORTUNITY.

There's Still Time to Be Counted.

Every response matters. Respond today.

For assistance, call toll-free (888) 424-7828.

www.agcensus.usda.gov



United States Department of Agriculture
National Agricultural Statistics Service

USDA-NASS
3-29-18

STAT CHAT SERIES

Join USDA-NASS on Twitter, using **#StatChat**, on Thursday, March 29 at 1 p.m. ET for our monthly chat.

Lance Honig will answer your questions about the *Prospective Plantings & Grain Stocks* reports.

You can tweet questions in advance **@usda_nass**.



THU, MAR 29 @ 1PM ET

@usda_nass #STATCHAT





United States Department of Agriculture
National Agricultural Statistics Service

All Reports Available At
www.nass.usda.gov

For Questions
202-720-2127
800-727-9540
nass@nass.usda.gov