



United States Department of Agriculture
National Agricultural Statistics Service



Cattle Inventory
Sheep & Goat Inventory
January 1, 2018

Executive Briefing

Survey Overview

	January Cattle	January Sheep and Goats
Data collection period	December 30 – January 18	
Sample size	36,300	21,800
Collection methods	Mail, telephone, internet, face-to-face interview	
Primary data items	Total inventory, inventory by class, calf crop	Total inventory, inventory by class, lamb/kid crop

U.S. Cattle and Calves Revisions

Survey	Item	Initial Estimate (1,000 head)	Current Revision	Current Estimate (1,000 head)
January 1, 2017	All cattle and calves	93,584.6	+120,000 +0.1%	93,704.6
	All cows and heifers that have calved	40,559.2	No revision	40,559.2
	Calf crop	35,082.7	+10,000 + <0.1%	35,092.7
July 1, 2017	All cattle and calves	102,600.0	-400,000 -0.4%	102,200.0
	All cows and heifers that have calved	41,900.0	-300,000 -0.7%	41,600.0
	Calf crop	36,300.0	-491,800 -1.4%	35,808.2



U.S. Cattle Inventory January 1



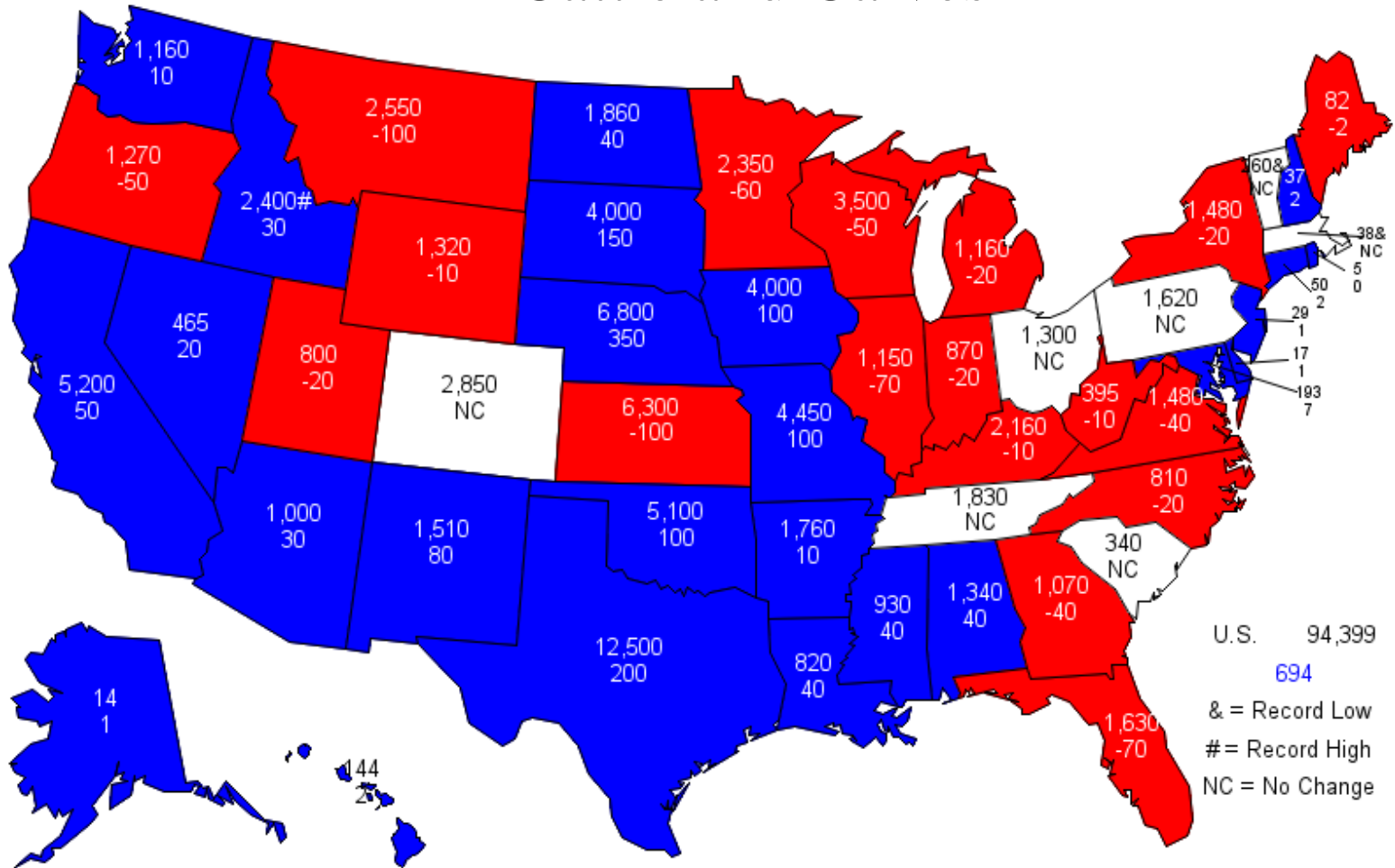
Items	2017 (1,000 head)	2018 (1,000 head)	% PY
All cattle and calves	93,705	94,399	101
All cows and heifers that have calved	40,559	41,123	101
Beef cows	31,213	31,723	102
Milk cows	9,346	9,400	101
All heifers 500 pounds and over	20,132	20,245	101
For beef cow replacement	6,368	6,131	96
Beef replacements expected to calve	3,979	3,771	95
For milk cow replacement	4,754	4,781	101
Milk replacements expected to calve	3,072	3,038	99
Other heifers	9,010	9,332	104
Steers 500 pounds and over	16,384	16,352	100
Bulls 500 pounds and over	2,244	2,252	100
Calves under 500 pounds	14,386	14,427	100
All cattle on feed	13,067	14,006	107
Previous year calf crop	35,093	35,808	102

Totals may not add due to rounding

January 31, 2018

January 1, 2018 Inventory

All Cattle and Calves



Legend

(1,000 head)

- January 1, 2018 Inventory
- Number of Head Change from Previous Year

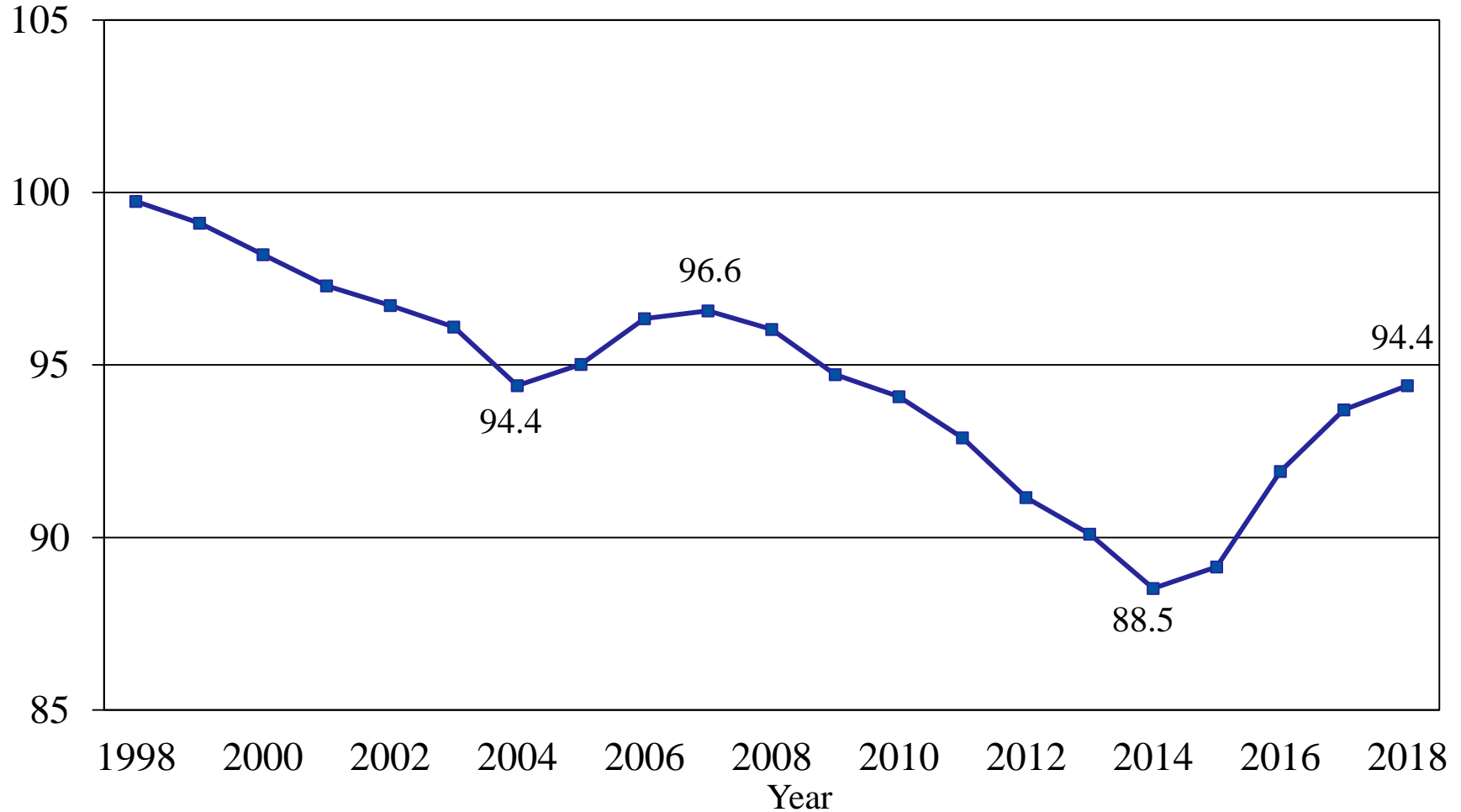


U.S. All Cattle and Calves

January 1, 1998 - 2018



Million head

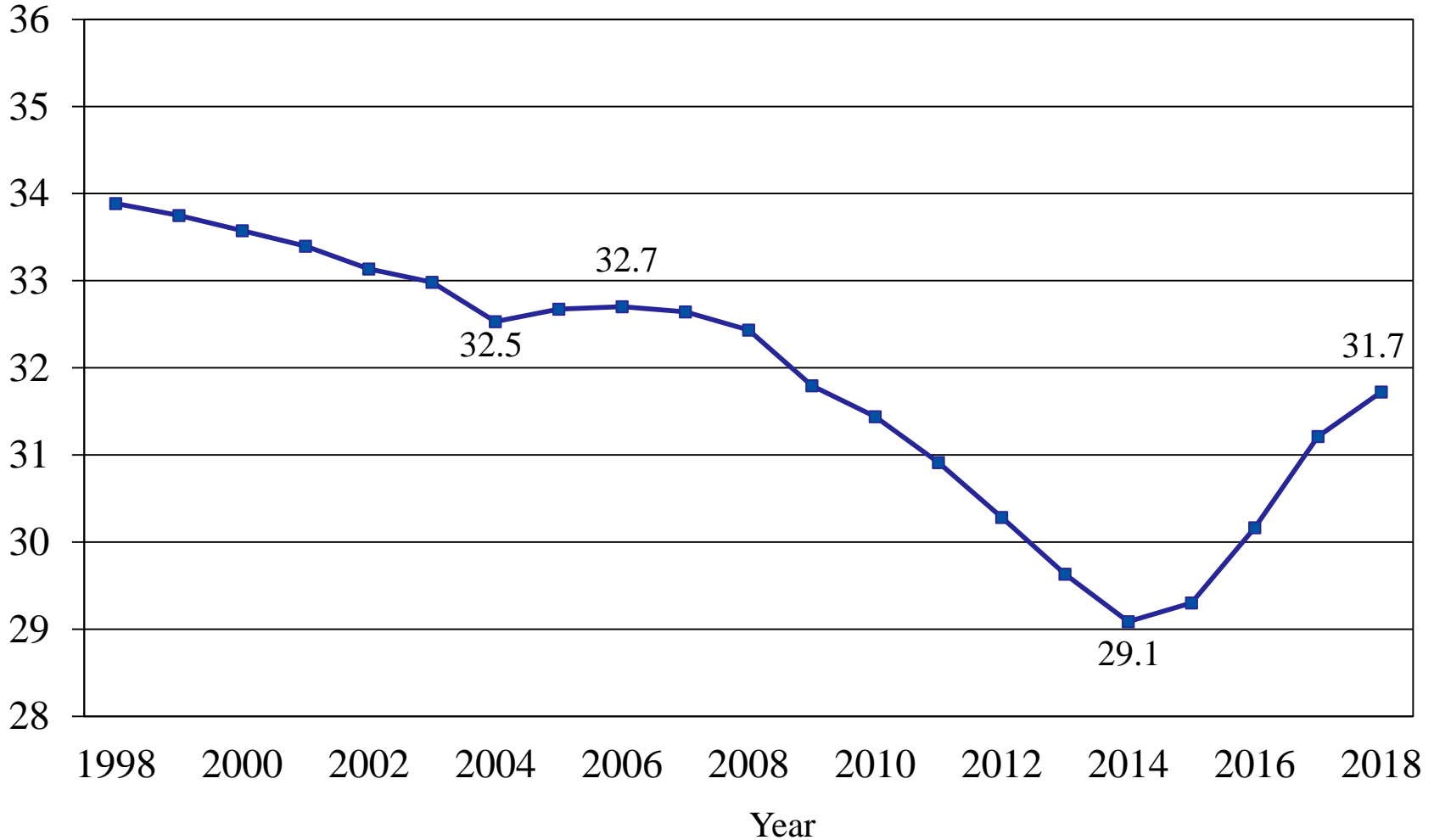


January 31, 2018

U.S. Beef Cows

January 1, 1998 - 2018

Million head





Trade Expectations Compared to NASS Estimates as Percent of Previous Year

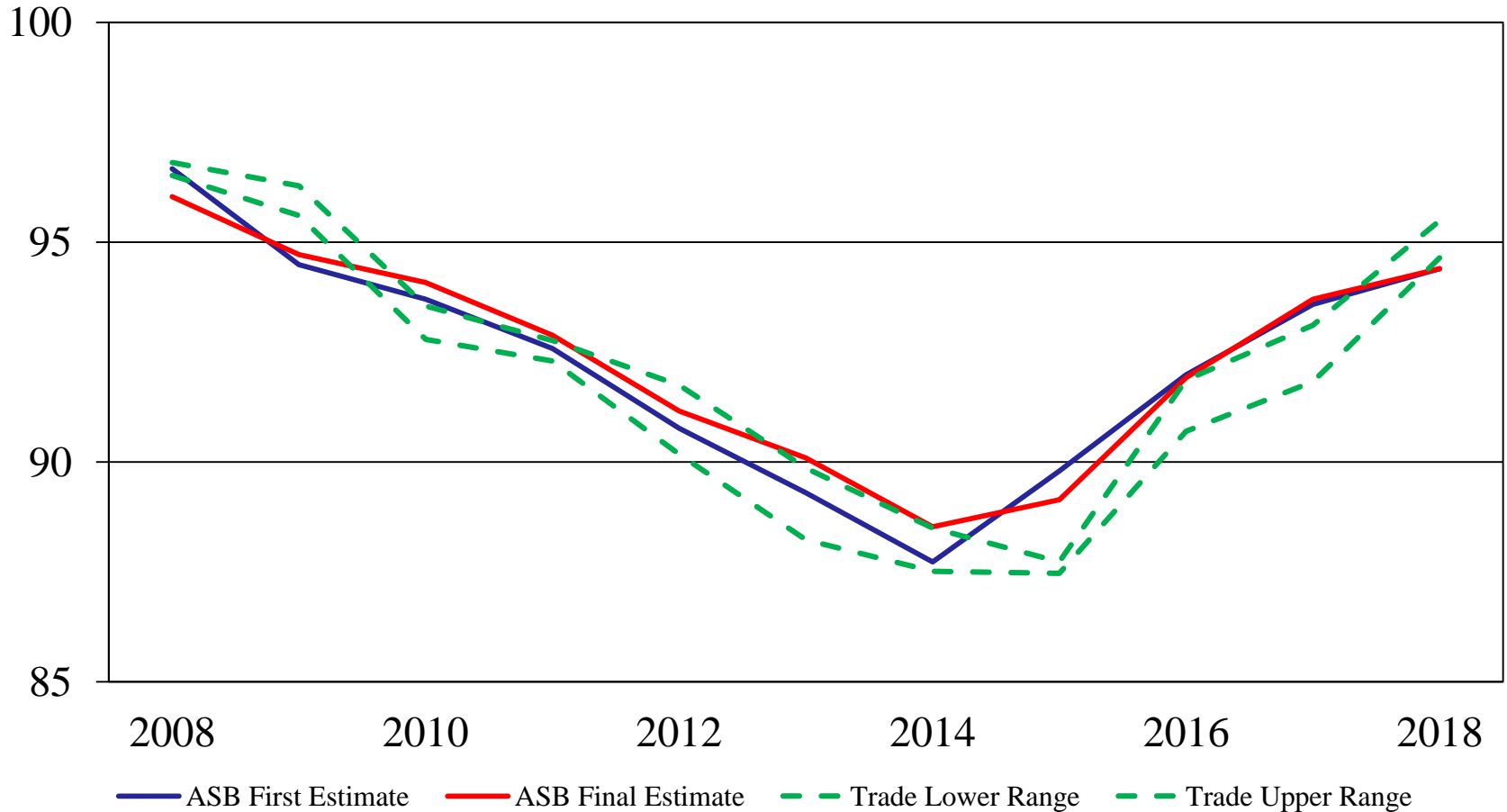
Inventory Items	NASS Estimate	Trade Average	Trade Range
All cattle and calves	100.7%	101.3%	101.0 – 101.9%
All cows and heifers that have calved	101.4%	101.5%	101.3 – 101.6%
Beef cows	101.6%	101.8%	101.7 – 101.9%
Milk cows	100.6%	100.2%	99.7 – 100.7%
Calf crop	102.0%	101.9%	101.3 – 102.8%
All cattle on feed	107.2%	106.7%	105.1 – 108.0%

All Cattle and Calves Inventory

First Estimate versus Final Estimate

January 1, 2008 - 2018

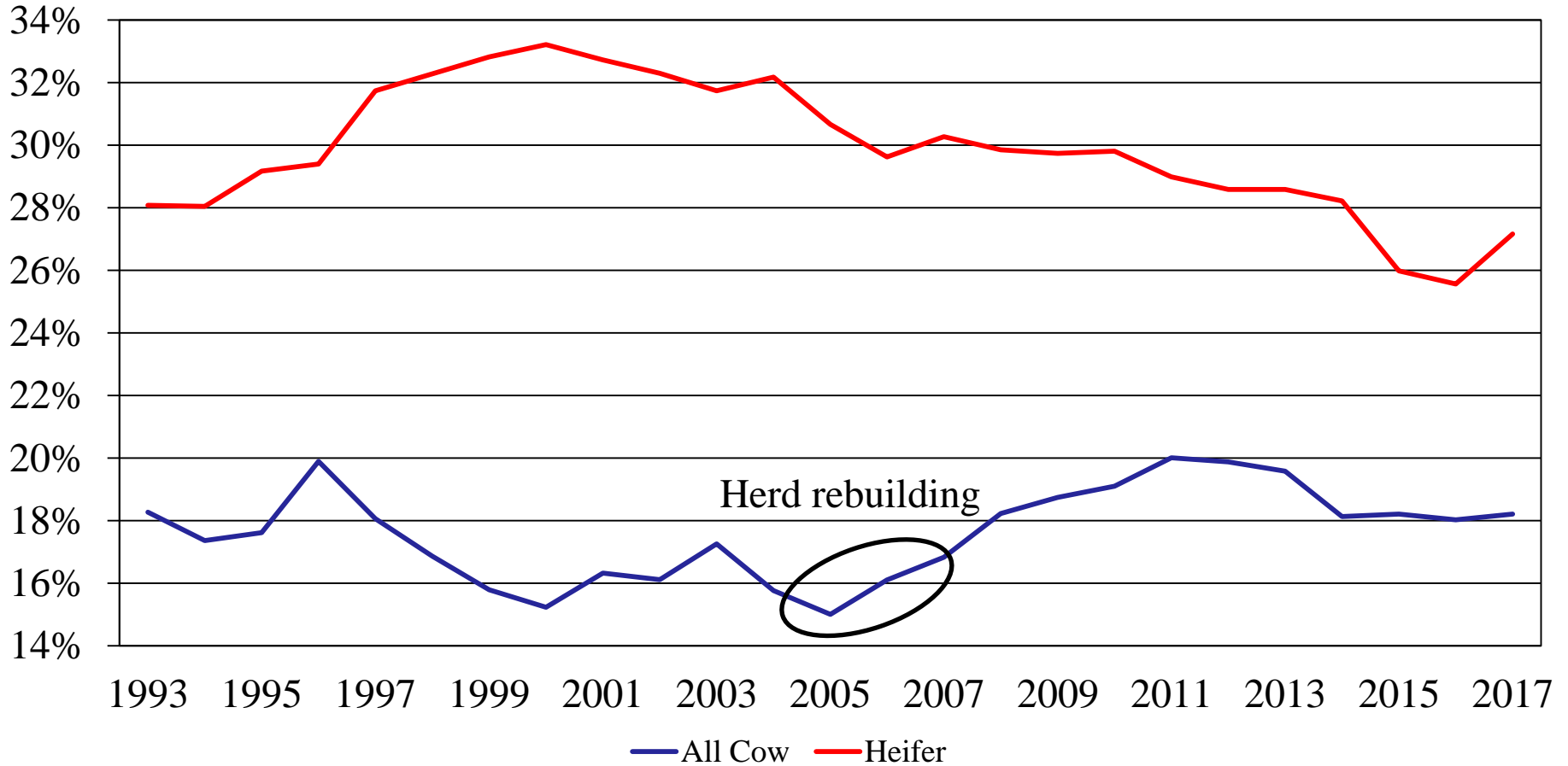
Million head



Year

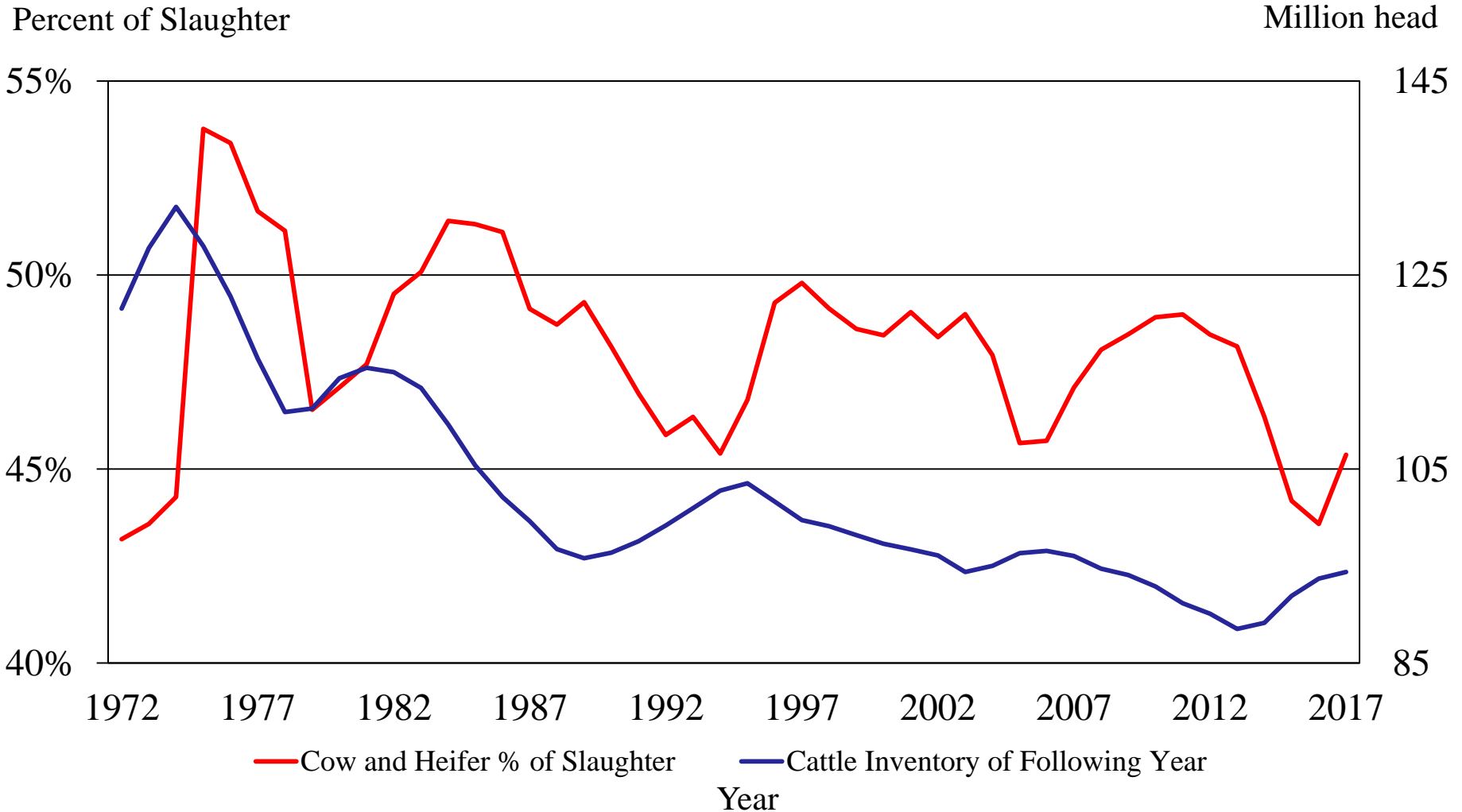
All Cow & Heifer Slaughter as a Percent of Total Slaughter

Percent of Slaughter



Year

Cattle Inventory vs Cow and Heifer Slaughter as a Percent of Slaughter





U.S. Feeder Cattle Supply on January 1



Item	2017 (1,000 head)	2018 (1,000 head)	% PY
Calves under 500 pounds	14,386	14,427	100
Steers and other heifers 500 pounds and over	25,393	25,685	101
Total supply	39,780	40,112	101
All cattle on feed	13,067	14,006	107
Feeder cattle supply	26,713	26,105	98
Number grazing on small grain pasture, 3 States	1,800	1,500	83
Kansas, Oklahoma, Texas			

Totals may not add due to rounding

January 31, 2018



U.S. Cattle on Feed on January 1



Item	2017 (1,000 head)	2018 (1,000 head)	% PY
Capacity of 1,000 head or more	10,605	11,489	108
Percent of total	81.2%	82.0%	
Capacity of less than 1,000 head	2,462	2,517	102
Percent of total	18.8%	18.0%	
All cattle on feed	13,067	14,006	107

U.S. Sheep and Lambs Revisions

Survey	Item	Initial Estimate (1,000 head)	Current Revision	Current Estimate (1,000 head)
January 1, 2017	All sheep and lambs	5,200	+50,000 +1.0%	5,250
	Lamb crop	3,250	No revision	3,250



U.S. All Sheep and Lambs Inventory



January 1

Items	2017 (1,000 head)	2018 (1,000 head)	% PY
All sheep and lambs	5,250	5,230	100
Market	1,375	1,400	102
Breeding	3,875	3,830	99
Replacement lambs under one year old	660	655	99
Ewes one year old and older	3,045	3,005	99
Rams one year old and older	170	170	100
Previous year lamb crop	3,250	3,200	98

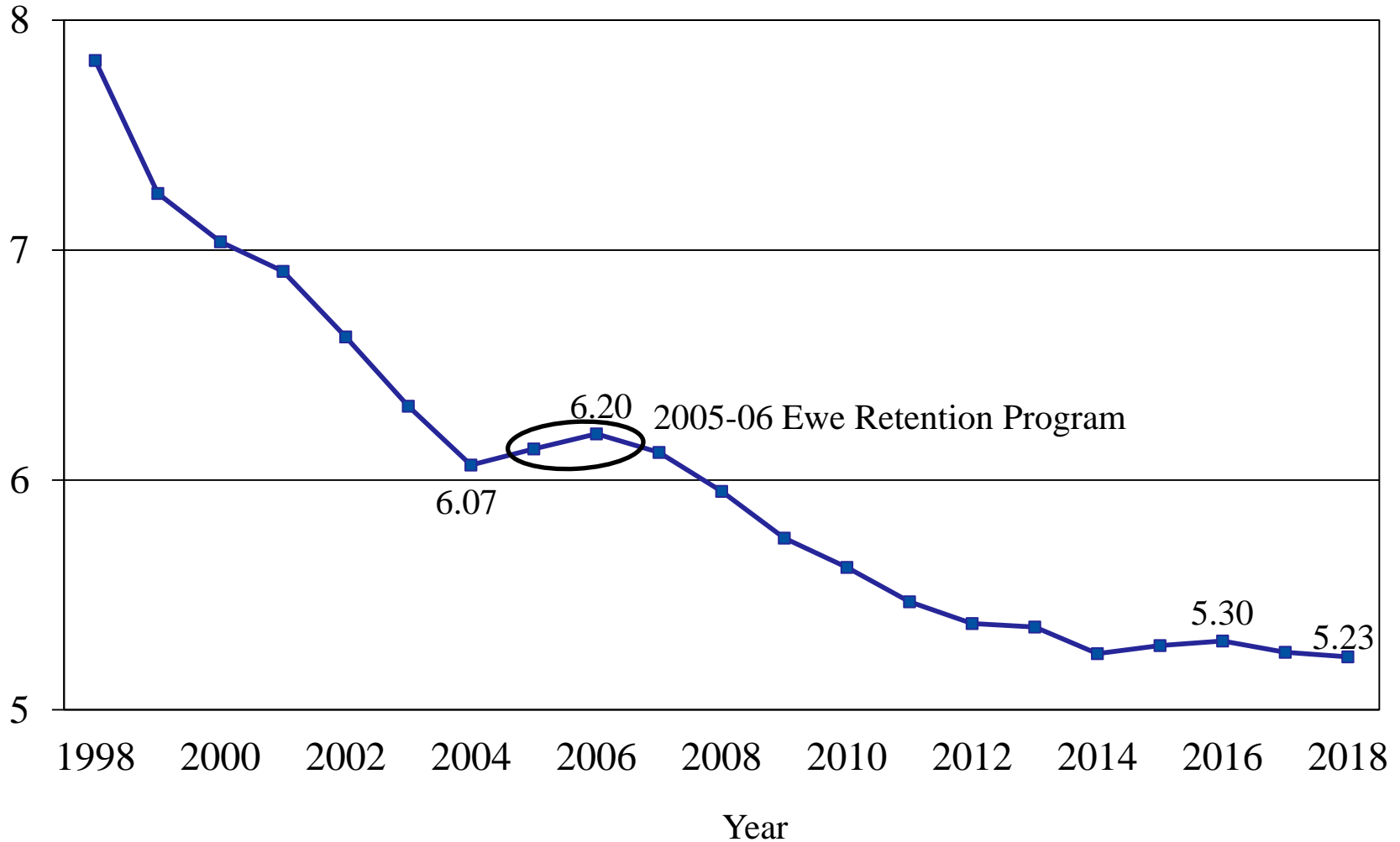
Totals may not add due to rounding

January 31, 2018

U.S. All Sheep and Lambs Inventory

January 1, 1998 - 2018

Million head



U.S. Goats and Kids Revisions

Survey	Item	Initial Estimate (1,000 head)	Current Revision	Current Estimate (1,000 head)
January 1, 2017	All goats and kids	2,640	No revision	2,640
	Kid crop	1,641	No revision	1,641



U.S. All Goats and Kids Inventory

January 1



Items	2017 (1,000 head)	2018 (1,000 head)	% PY
All goats and kids	2,640	2,620	99
Market	469	459	98
Breeding	2,171	2,161	100
Replacement kids under one year old	393	394	100
Does one year old and older	1,614	1,604	99
Bucks one year old and older	164	163	99
Previous year kid crop	1,641	1,637	100

Totals may not add due to rounding

January 31, 2018



U.S. Goat Inventory by Type

January 1



Items	2017 (1,000 head)	2018 (1,000 head)	% PY
All goats	2,640	2,620	99
Meat and other	2,115	2,098	99
Milk	373	380	102
Angora	152	142	93

Totals may not add due to rounding

January 31, 2018

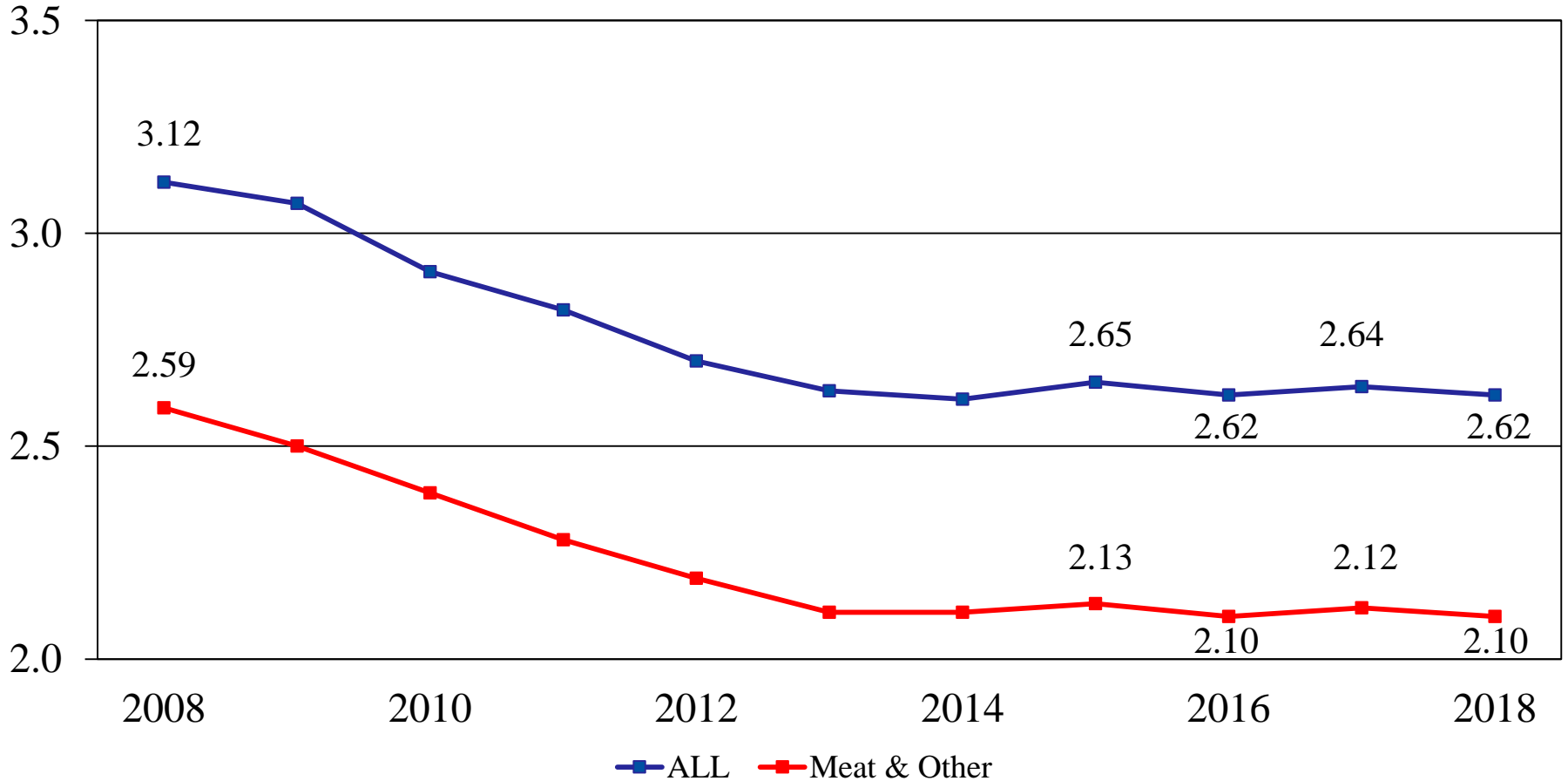


U.S. All Goats and Kids Inventory versus Meat and Other Goats and Kids Inventory



Million head

January 1, 2008 - 2018



Year

January 31, 2018



Upcoming NASS Reports



Release Date	Report Title
February 1	Cotton System Fats & Oils Flour Milling Grain Crushings
February 8	Crop Production
February 16	Farm & Land in Farms
February 21	Milk Production
February 22	Cold Storage Cold Storage – Annual Livestock Slaughter
February 23	Cattle on Feed
February 27	Agricultural Prices



United States Department of Agriculture
National Agricultural Statistics Service



United States Department of Agriculture

USDA's
94th
Annual

Agricultural Outlook Forum
THE ROOTS OF PROSPERITY

February 22-23, 2018 • Crystal Gateway Marriott Hotel, Arlington, Virginia



United States Department of Agriculture
National Agricultural Statistics Service



All Reports Available At
www.nass.usda.gov

For Questions
(202) 720-3570
(800) 727-9540
nass@nass.usda.gov