



United States Department of Agriculture
National Agricultural Statistics Service

August Crop Production
Executive Summary

Lance Honig, Chief
Crops Branch



Contents

Field Crops	Fruit and Nuts	Specialty Crops
Corn	Peaches	Dry Beans
Soybeans	Apples	Tobacco
Cotton	Pears	Sugarbeets
Wheat	Grapes	Sugarcane
Oats	Cranberries	Hops
Barley		Summer Potatoes
Sorghum		
Alfalfa & Other Hay		
Rice		
Peanuts		



Survey Overview

	Ag Yield	Objective Yield
Survey Type	Farmer Reported	Field Measurement
Crops Included	Field Crops	Corn, Soybeans, Cotton, and Winter Wheat
Sample Size	21,654	4,544
Collection Period	July 29 – Aug 4	July 25 – Aug 1

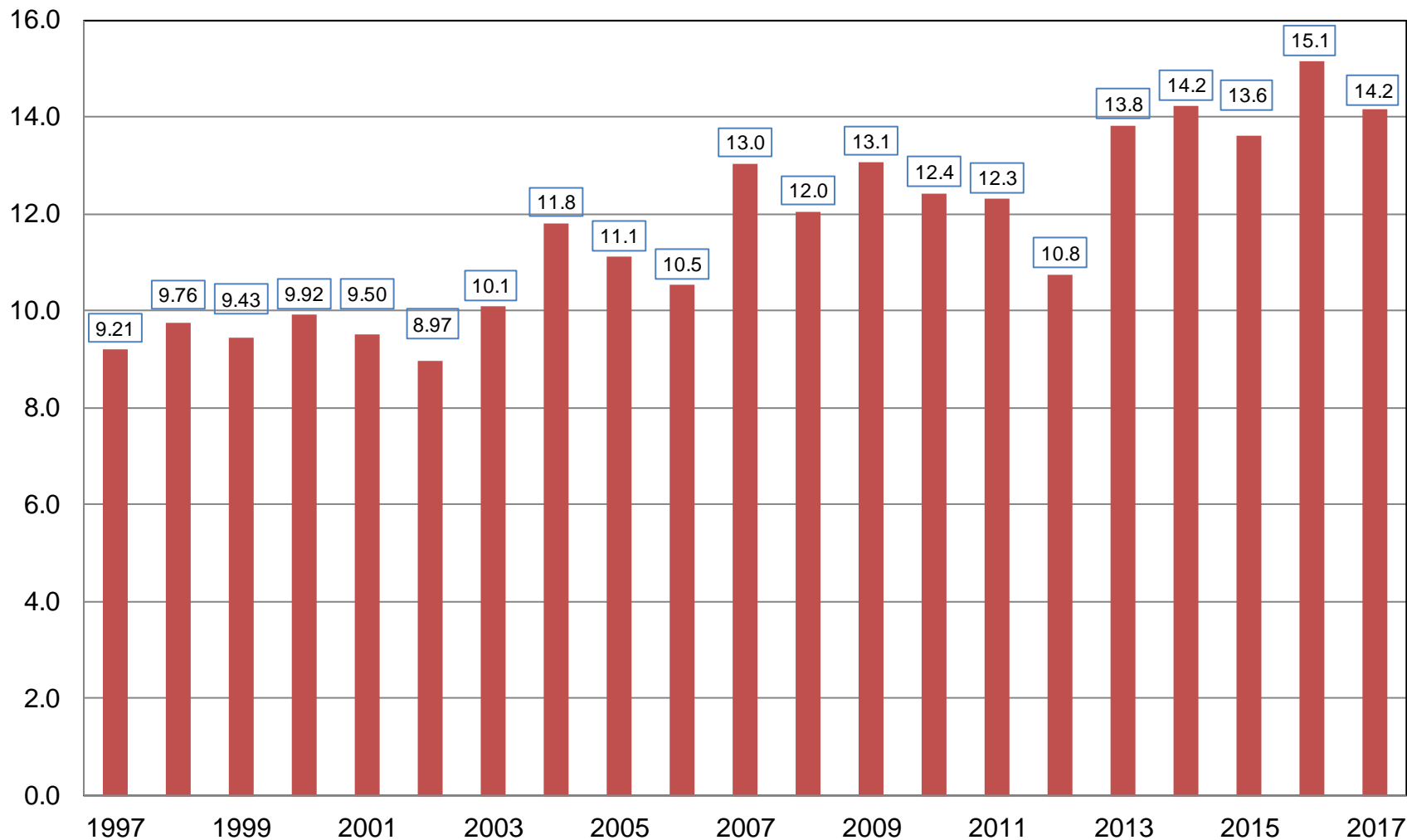


August 2017 Crop Production

Crop	Unit	August 2017	% Change From Previous Estimate	% Change From Previous Season
Corn				
Planted	Mil Ac	90.9	NC	-3.3
Harvested	Mil Ac	83.5	NC	-3.7
Yield	Bu/Ac	169.5	NA	-2.9
Production	Bil Bu	14.2	NA	-6.6

Corn for Grain Production United States

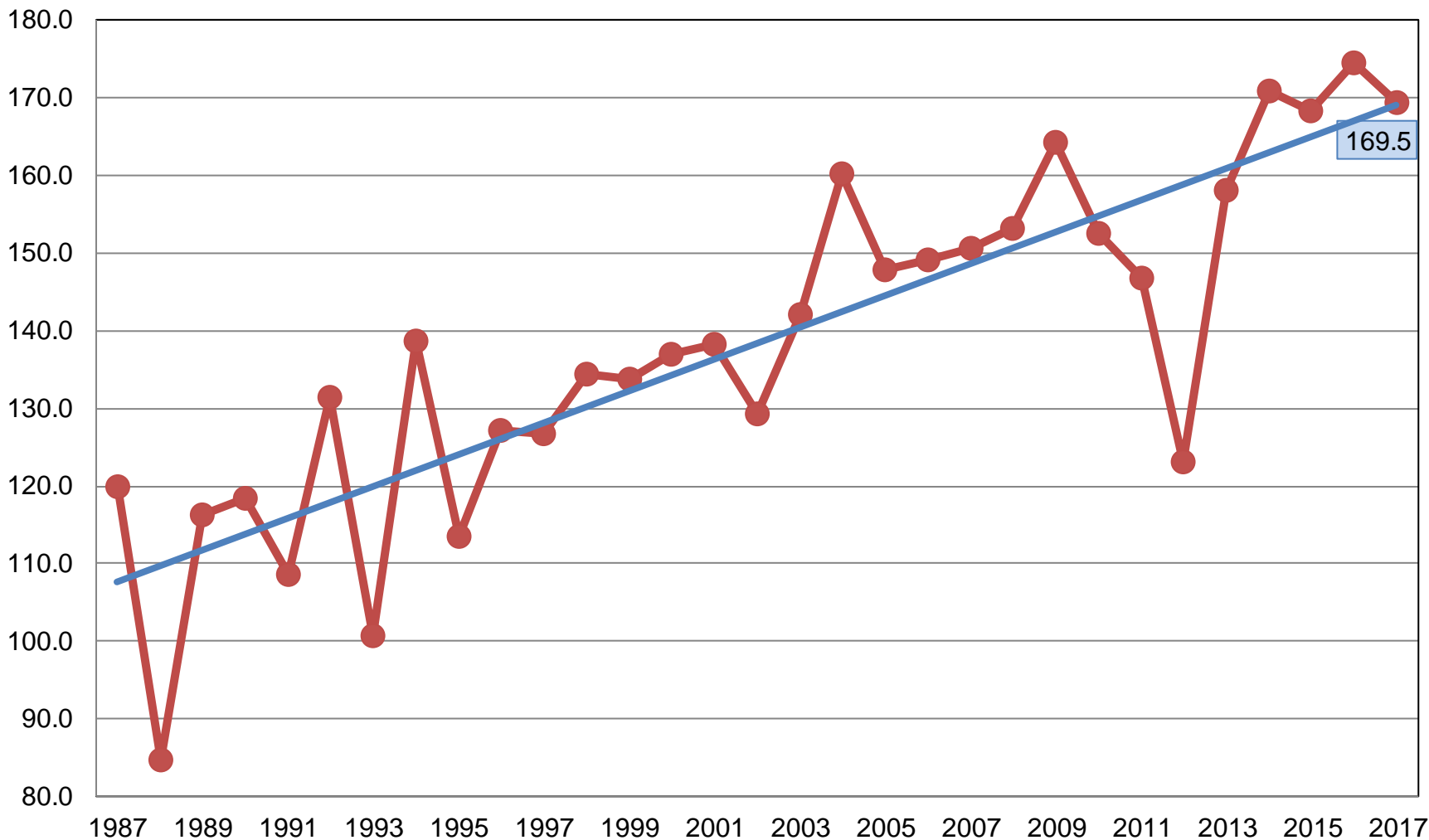
Billion Bushels





Corn for Grain Yield United States

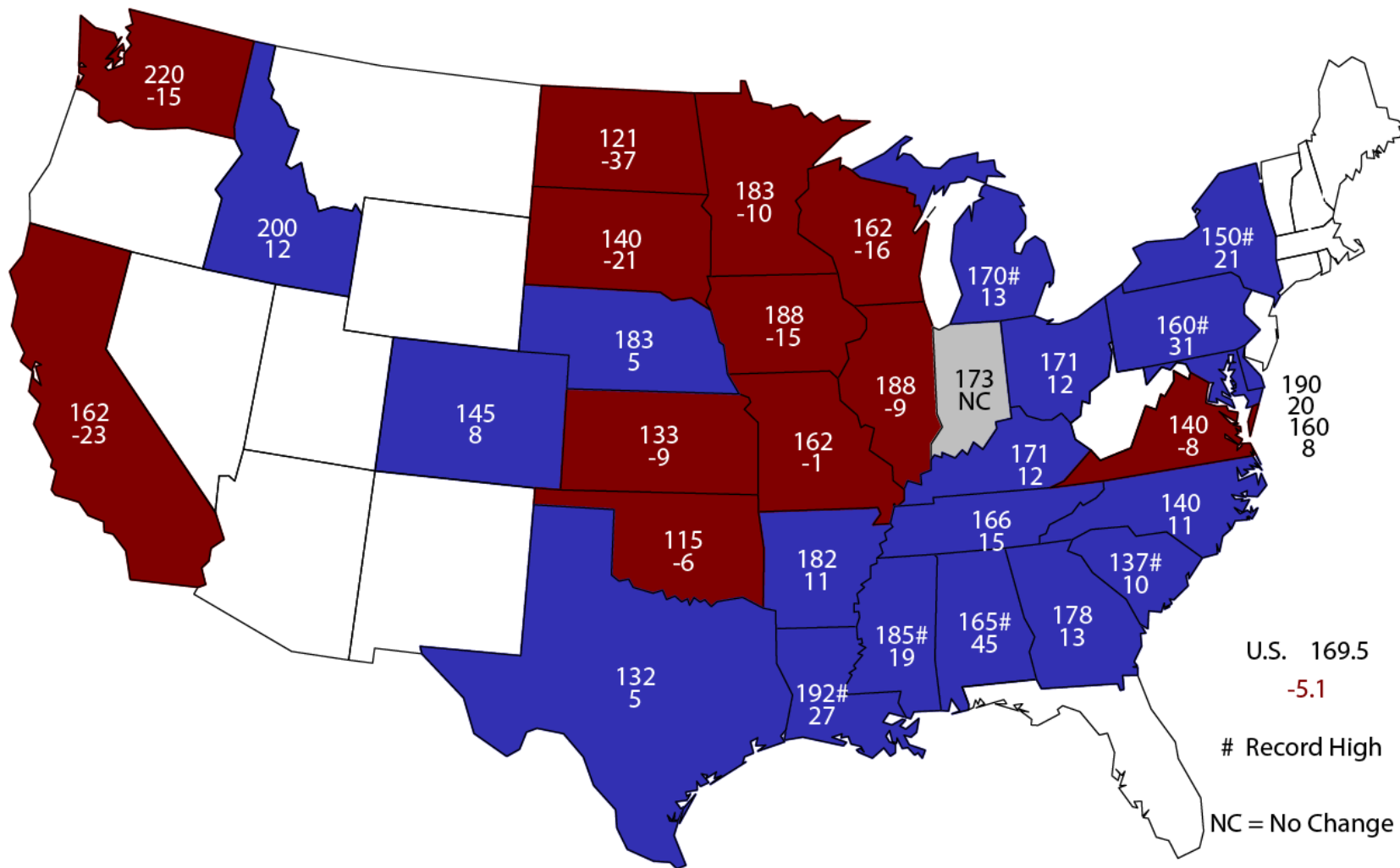
Bushels per Acre



Yield Linear (Yield)

August 1, 2017 Corn Yield

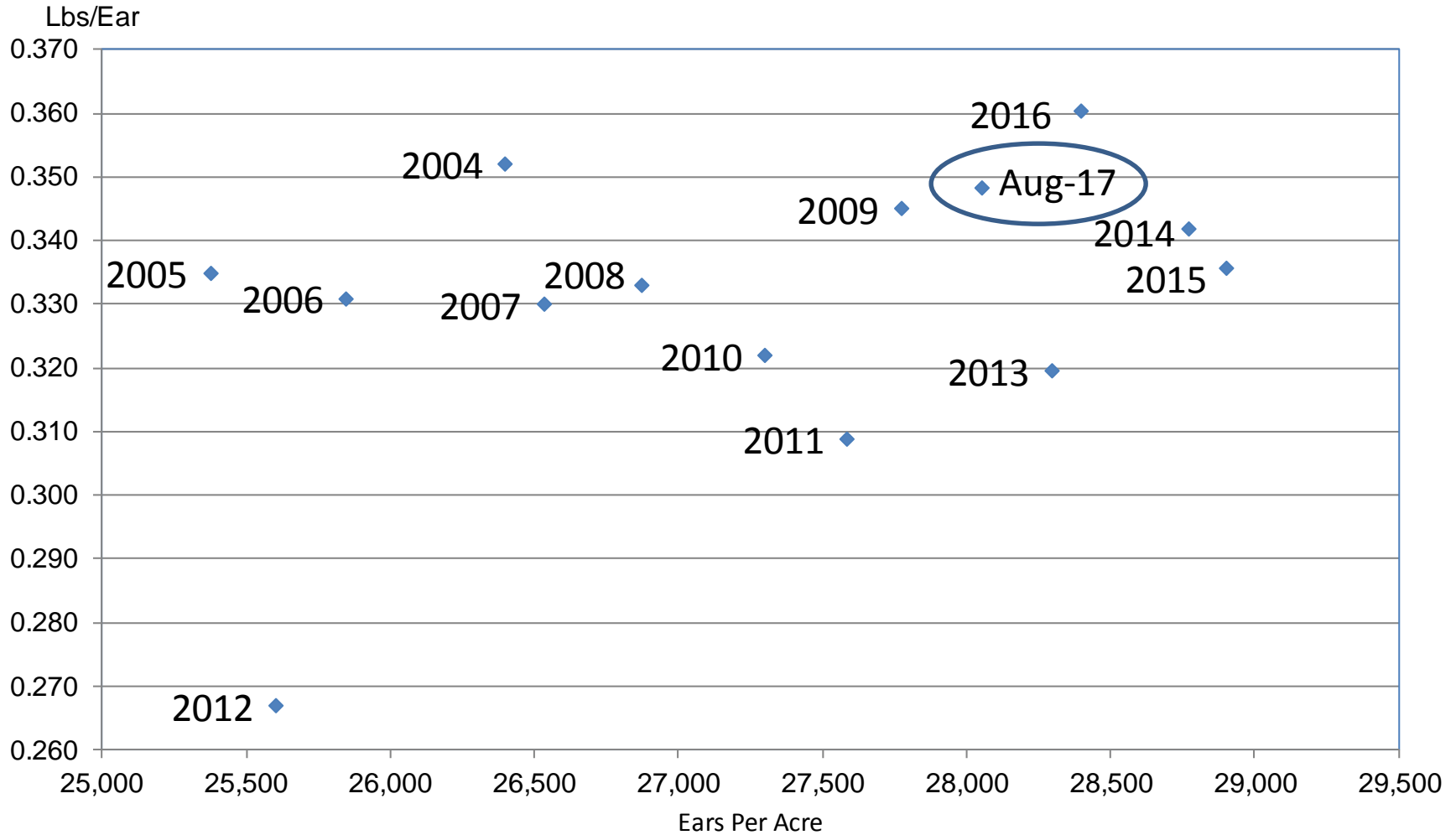
Bushels and Change From Previous Year





Corn Objective Yield Region

Ears Per Acre vs. Implied Ear Weight



Implied Ear Weight = (Published Yield * 56) / Ears



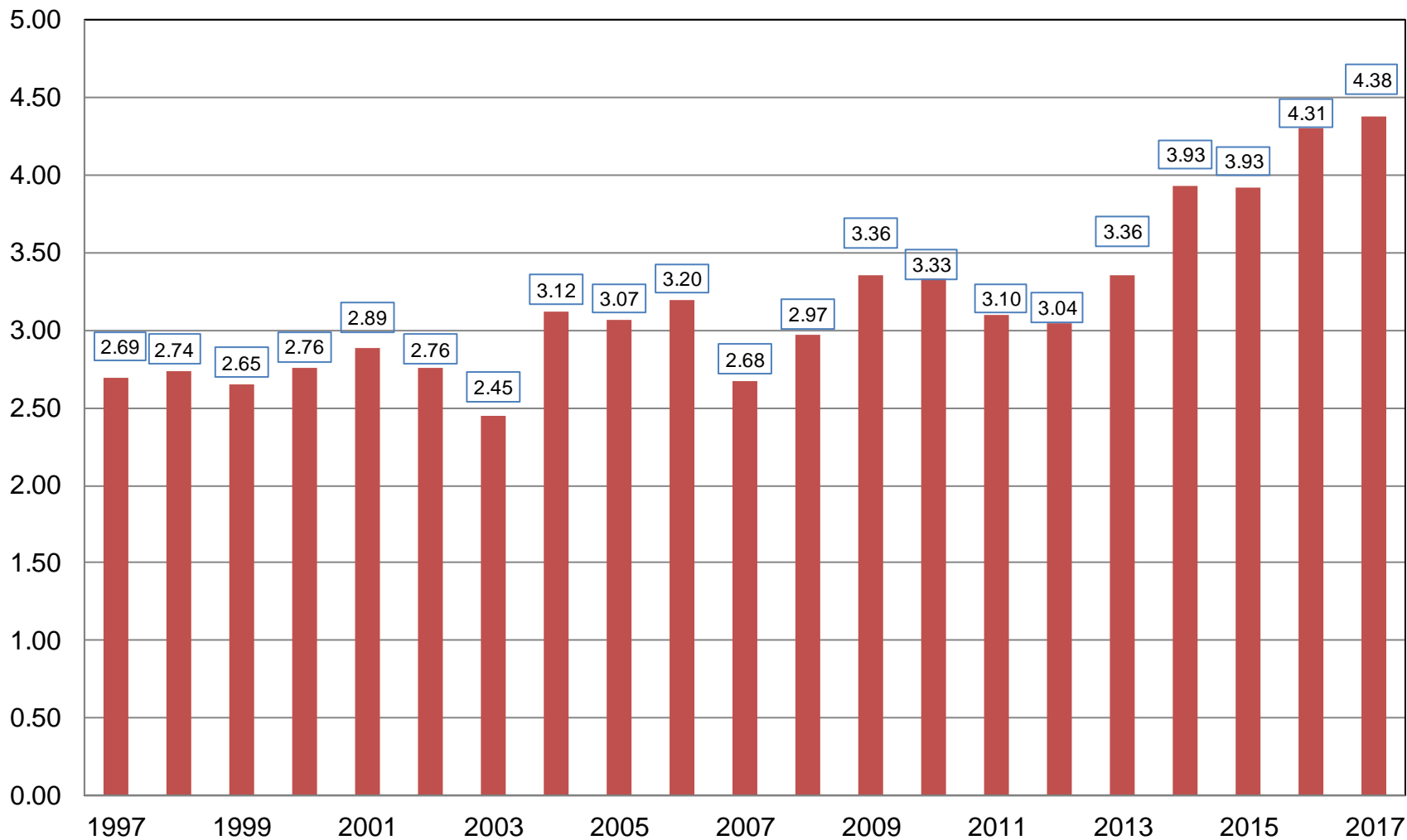
August 2017 Crop Production

Crop	Unit	August 2017	% Change From Previous Estimate	% Change From Previous Season
Soybeans				
Planted	Mil Ac	89.5	NC	+7.3
Harvested	Mil Ac	88.7	NC	+7.2
Yield	Bu/Ac	49.4	NA	-5.2
Production	Bil Bu	4.38	NA	+1.7



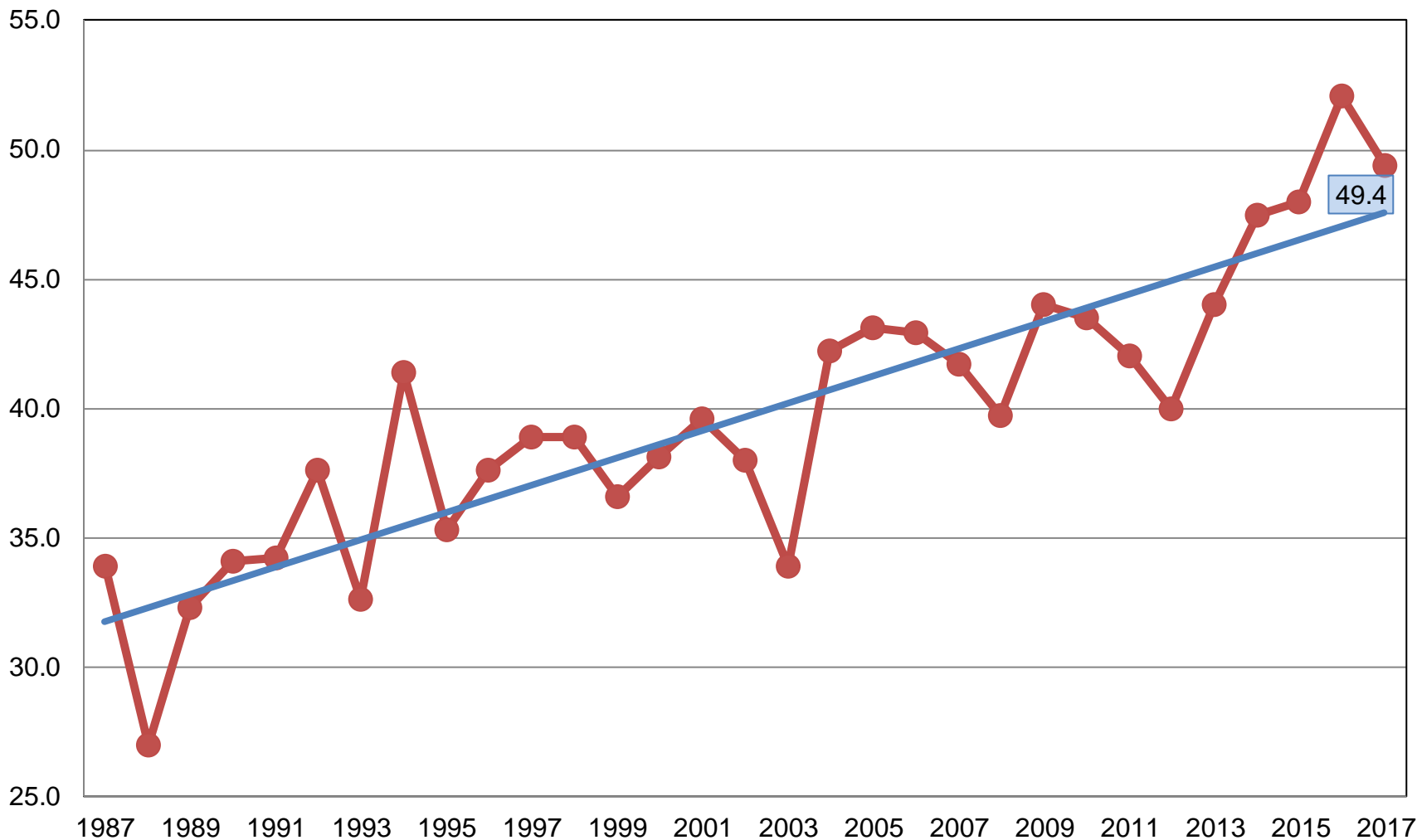
Soybean Production United States

Billion Bushels



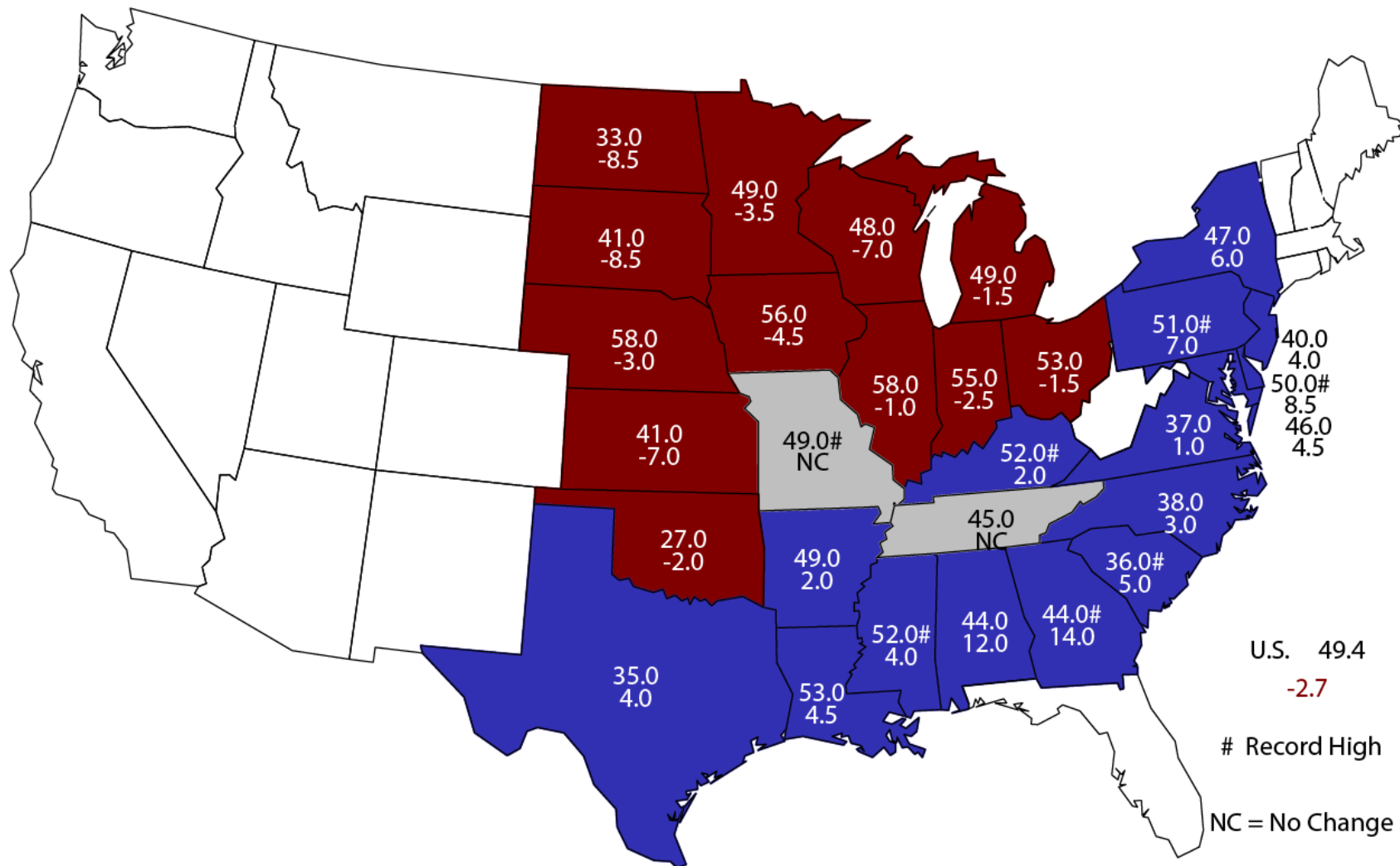
Soybean Yield United States

Bushels per Acre



—●— Yield — Linear (Yield)

August 1, 2017 Soybean Yield Bushels and Change From Previous Year



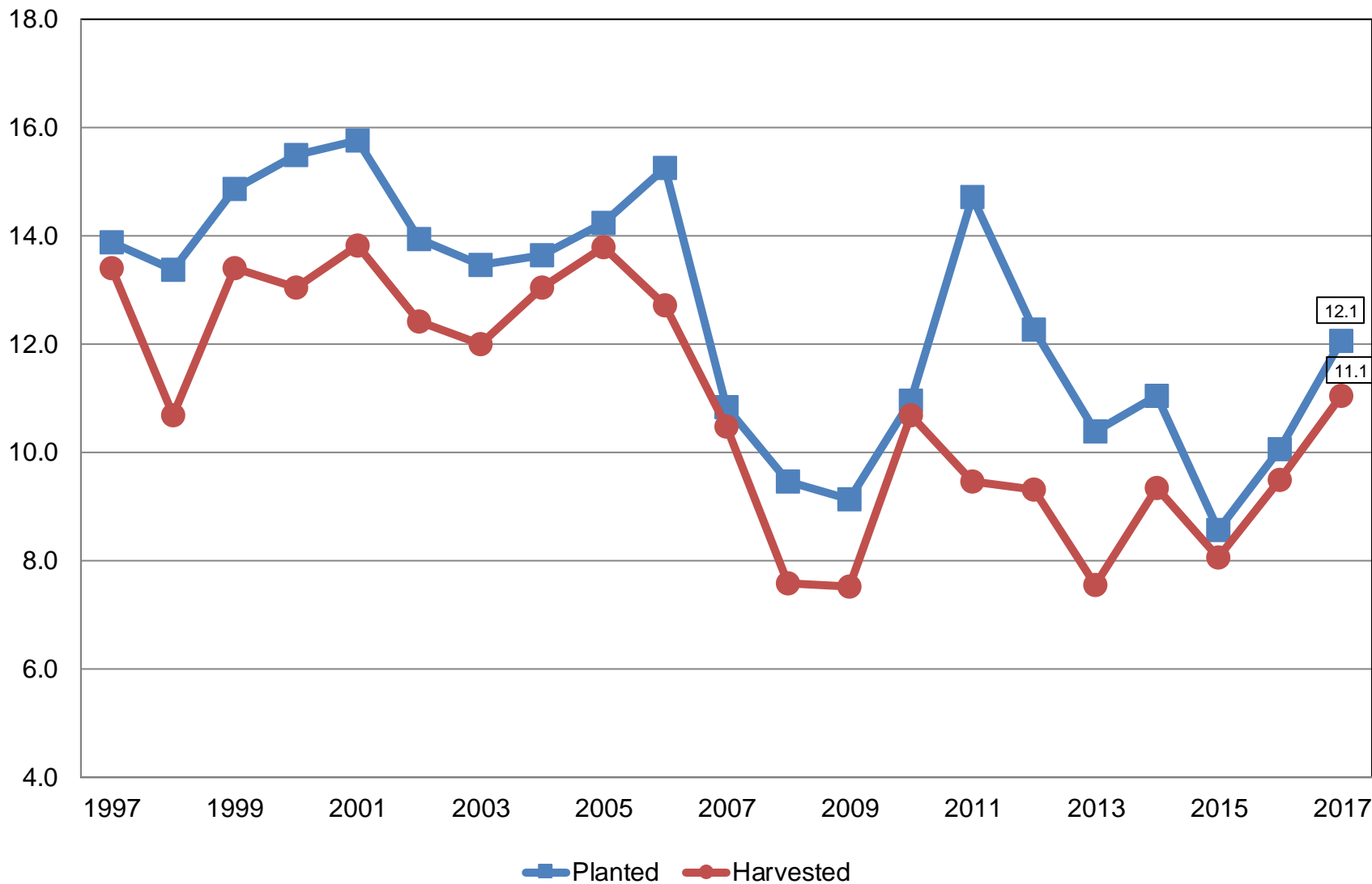


August 2017 Crop Production

Crop	Unit	August 2017	% Change From Previous Estimate	% Change From Previous Season
All Cotton				
Planted	Mil Ac	12.1	NC	+19.7
Harvested	Mil Ac	11.1	NA	+16.3
Yield	Lb/Ac	892	NA	+2.9
Production	Mil Bls	20.5	NA	+19.7

All Cotton Acres United States

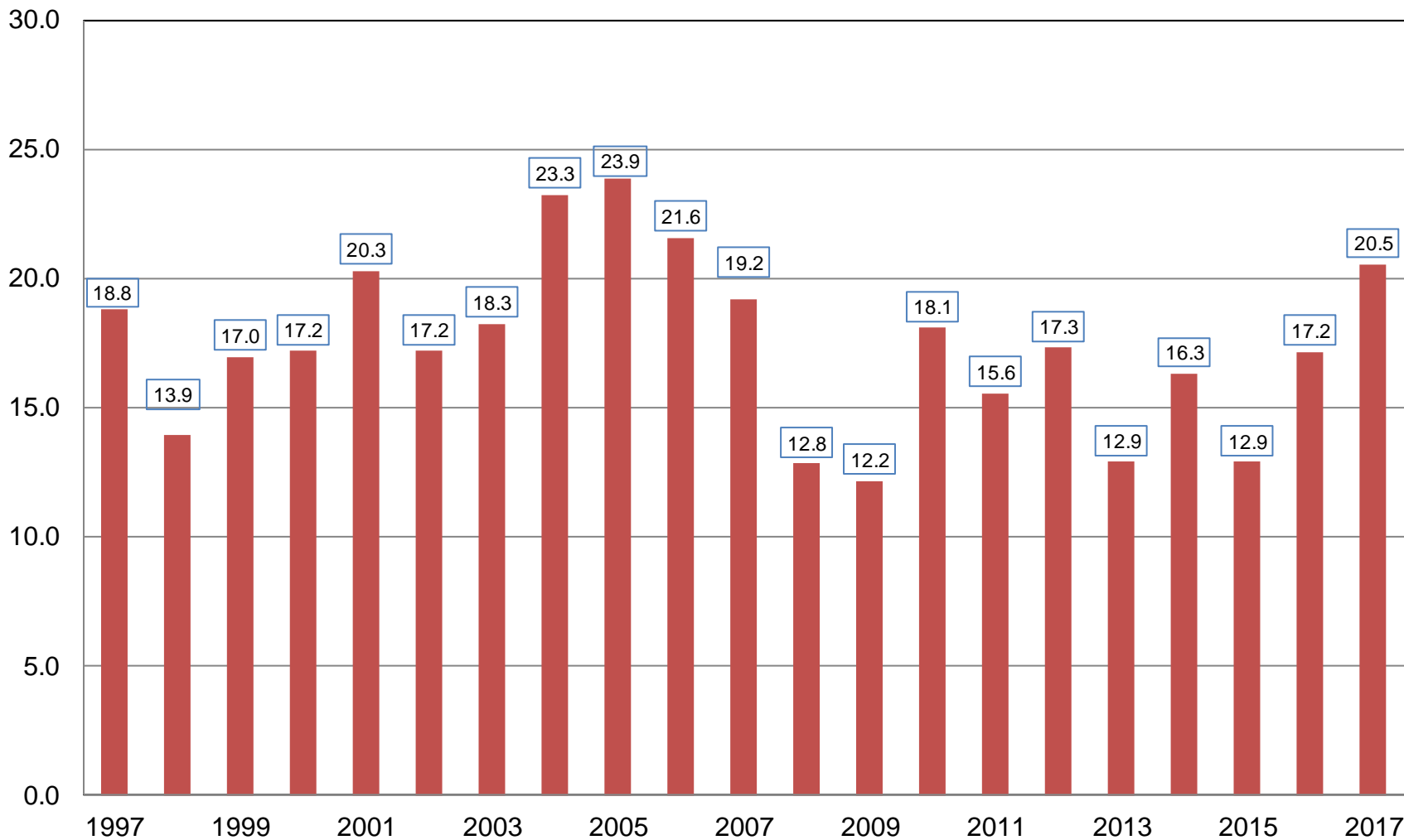
Million Acres





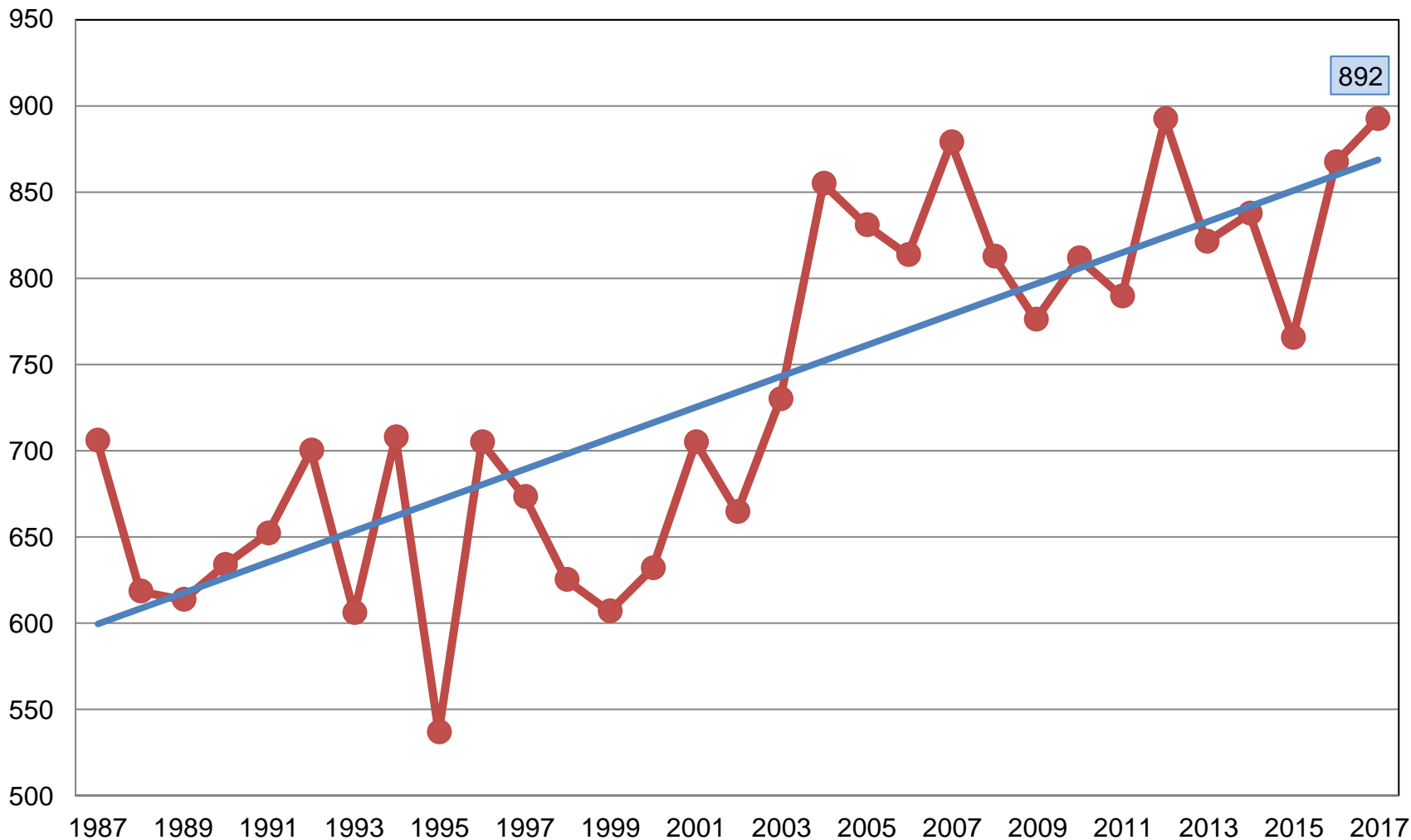
All Cotton Production United States

Million Bales



All Cotton Yield United States

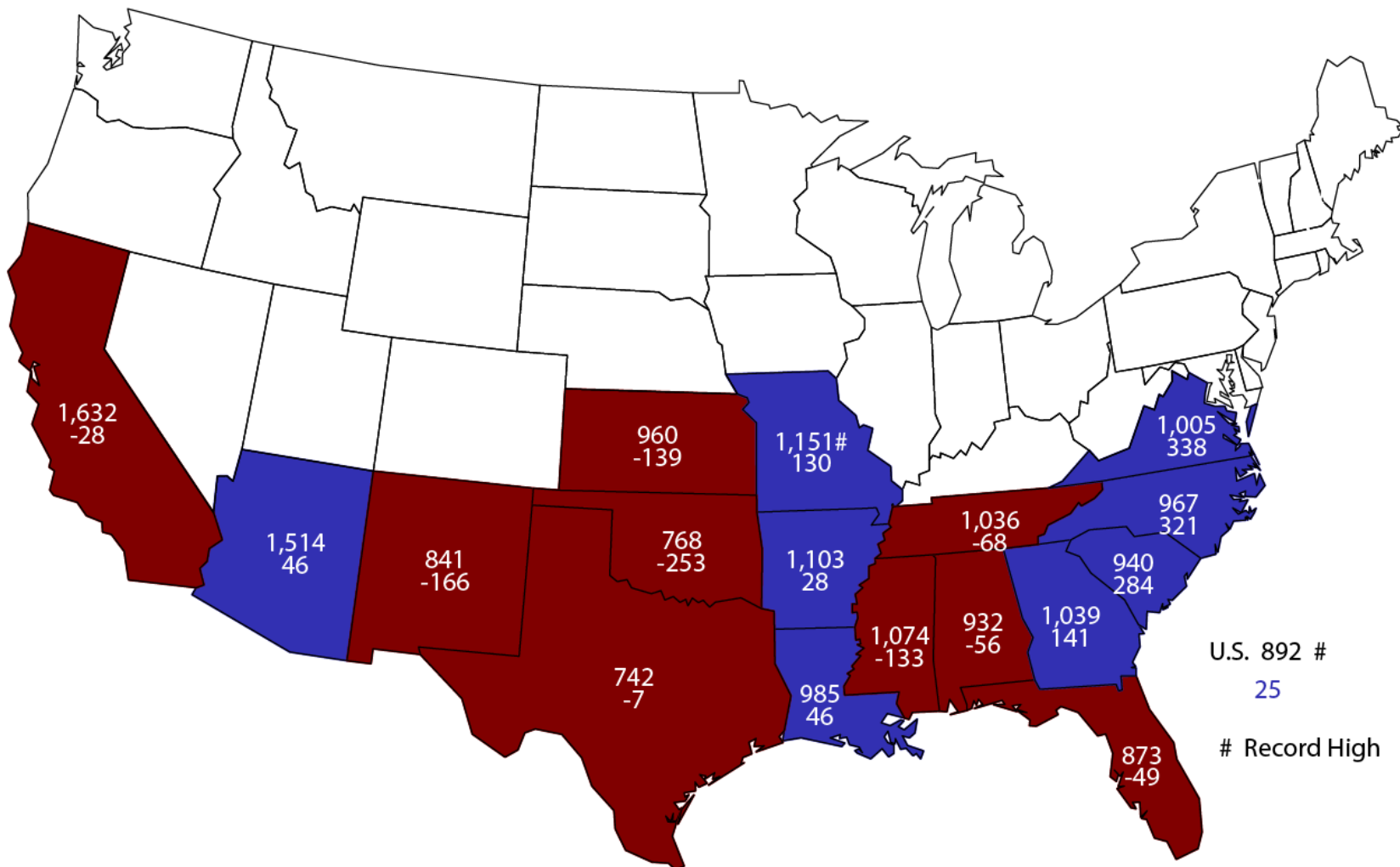
Pounds per Acre



● Yield — Linear (Yield)

August 1, 2017 All Cotton Yield

Pounds and Change From Previous Year



U.S. 892 #
25

Record High

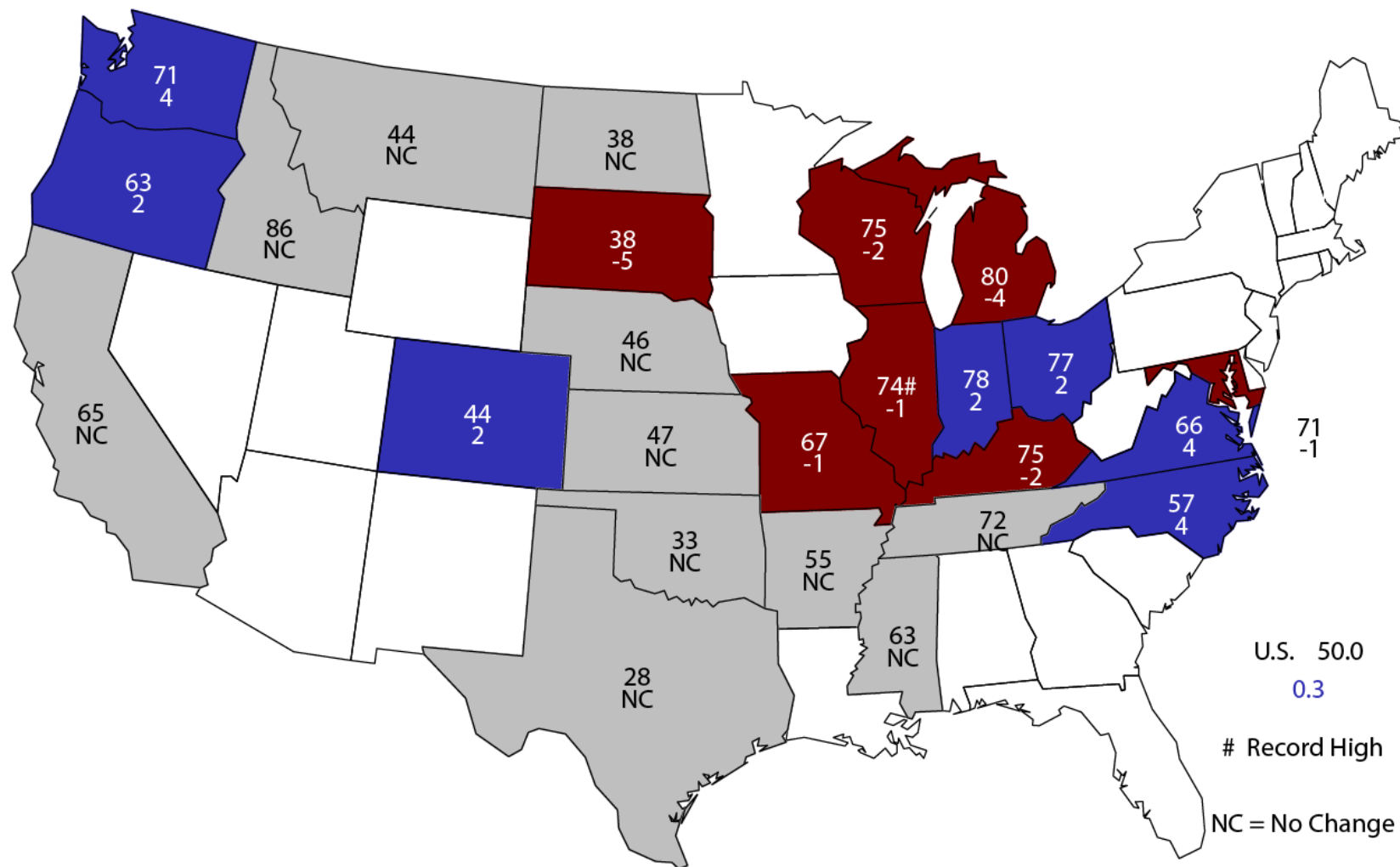


August 2017 Crop Production

Crop	Unit	August 2017	% Change From Previous Estimate	% Change From Previous Season
Winter Wheat				
Harvested	Mil Ac	25.8	NC	-14.8
Yield	Bu/Ac	50.0	+0.6	-9.6
Production	Bil Bu	1.29	+0.6	-23.0
Other Spring Wheat				
Harvested	Mil Ac	10.5	NC	-7.1
Yield	Bu/Ac	38.3	-5.0	-18.9
Production	Mil Bu	402	-5.0	-24.8
Durum Wheat				
Harvested	Mil Ac	1.86	NC	-21.4
Yield	Bu/Ac	27.2	-12.0	-38.2
Production	Mil Bu	50.5	-12.1	-51.5
All Wheat				
Production	Bil Bu	1.74	-1.2	-24.7

August 1, 2017 Winter Wheat Yield

Bushels and Change From Previous Month



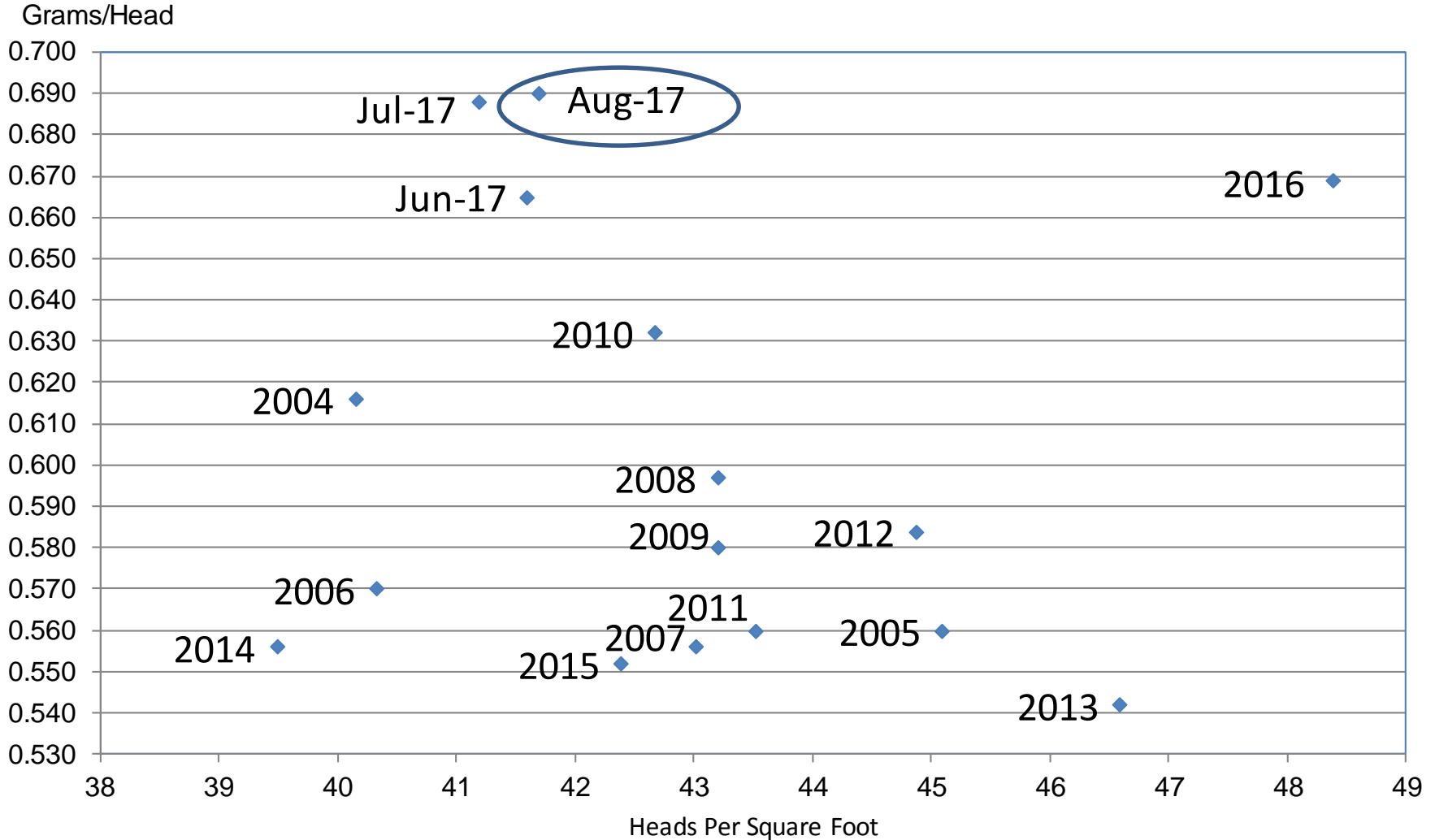
U.S. 50.0
0.3

Record High

NC = No Change

Wheat Objective Yield Region

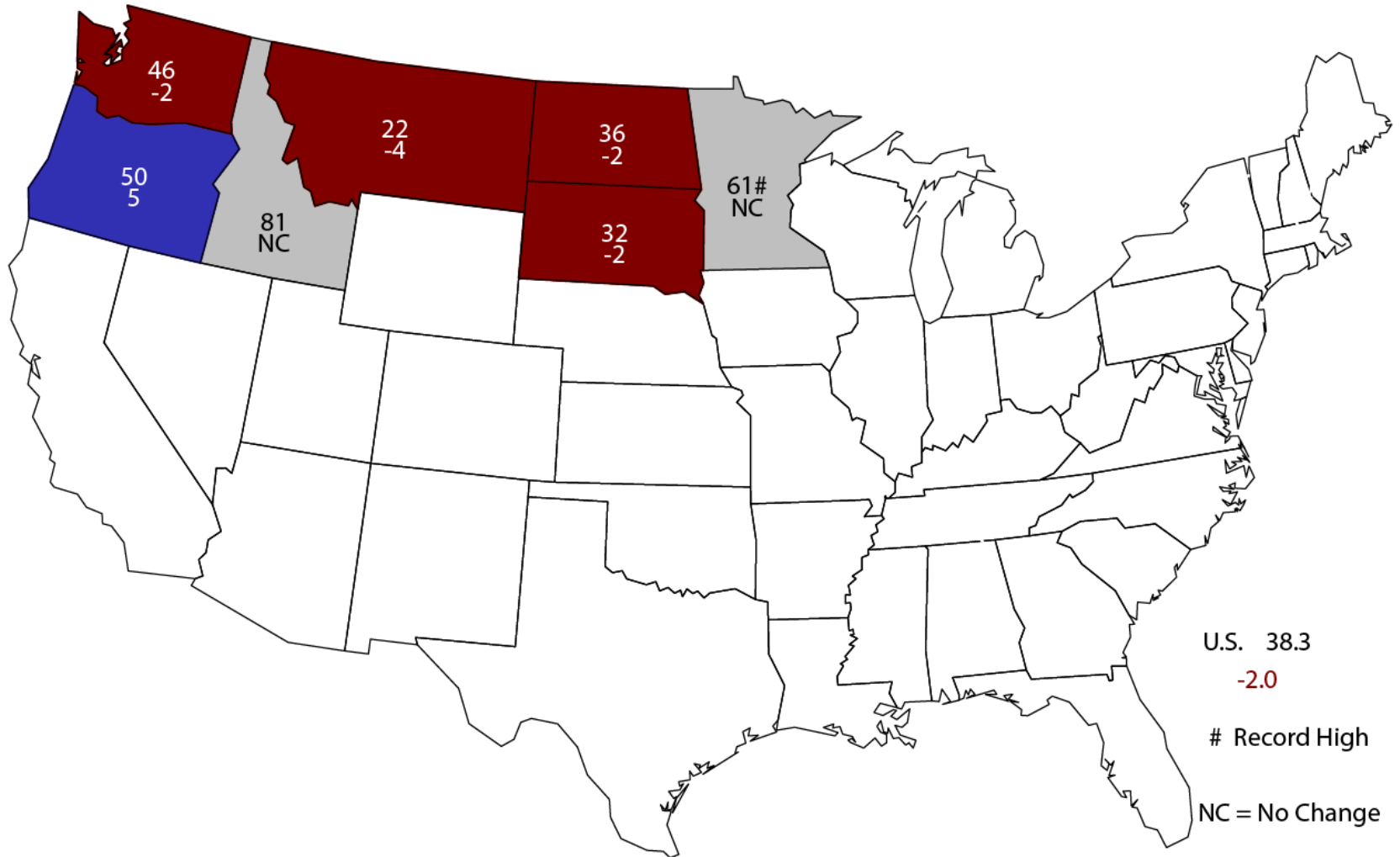
Heads Per Square Foot vs. Implied Head Weight



$$\text{Implied Head Weight} = \text{Published Yield} / (\text{Heads} * 1.6006)$$

August 1, 2017 Other Spring Wheat Yield

Bushels and Change From Previous Month





August 2017 Crop Production

Crop	Unit	August 2017	% Change From Previous Estimate	% Change From Previous Season
Oats	Mil Bu	53.7	+0.1	-17.1
Barley	Mil Bu	140	-1.9	-29.6
Sorghum	Mil Bu	369	NA	-23.1
Alfalfa Hay	Mil Tons	56.2	NA	-3.6
Other Hay	Mil Tons	76.4	NA	-0.1
Rice	Mil Cwt	186	NA	-16.8
Peanuts	Bil Lbs	7.43	NA	+30.7



August 2017 Crop Production

Crop	Unit	August 2017	% Change From Previous Estimate	% Change From Previous Season
All Tobacco	Mil Lbs	695	NA	+10.5
Dry Beans	Mil Cwt	34.2	NA	+19.2
Sugarbeets	Mil Tons	36.3	NA	-1.5
Sugarcane	Mil Tons	31.8	NA	-0.9
Summer Potatoes	Mil Cwt	20.2	NA	+3.3



August 2017 Crop Production

Crop	Unit	August 2017	% Change From Previous Estimate	% Change From Previous Season
Peaches	Thou Tons	735	NA	-7.6
Apples	Bil Lbs	10.4	NA	-7.4
Pears	Thou Tons	707	NA	-4.3
Grapes	Mil Tons	7.51	NA	-2.1
Hops	Mil Lbs	97.6	NA	+12.0
Cranberries	Mil Bbls	9.05	NA	-6.0



Upcoming Reports

Release Date	Report Title
August 25	Cattle on Feed Rice Stocks
August 30	Agricultural Prices
August 31	Citrus Fruits
September 1	CAIR: Cotton CAIR: Fats & Oils CAIR: Grain Crushings
September 12	Cotton Ginnings Crop Production



**STAT
CHAT**
SERIES

Join @usda_nass using #StatChat to ask NASS's Lance Honig about the Crop Production report.

@usda_nass
#STATCHAT



**THU
AUG 10
1PM ET**





United States Department of Agriculture
National Agricultural Statistics Service

All Reports Available At
www.nass.usda.gov

For Questions
202-720-2127
800-727-9540
nass@nass.usda.gov